



JLAB GO Wireless Keyboard User Manual

[Home](#) » [JLab](#) » JLAB GO Wireless Keyboard User Manual

Contents [[hide](#)]

- [1 JLAB GO Wireless Keyboard](#)
- [2 CONNECT WITH DONGLE](#)
- [3 CONNECT WITH BLUETOOTH](#)
- [4 KEYS](#)
- [5 SHORTCUT KEYS](#)
- [6 QUICK TIPS](#)
- [7 Documents / Resources](#)
 - [7.1 References](#)
- [8 Related Posts](#)



JLAB GO Wireless Keyboard



We love that you are rocking JLab! We take pride in our products and fully stand behind them.

YOUR WARRANTY

All warranty claims are subject to JLab authorization and at our sole discretion. Retain your proof of purchase to ensure warranty coverage.

CONTACT US

Reach out to us at support@jlab.com
or visit jlab.com/contact

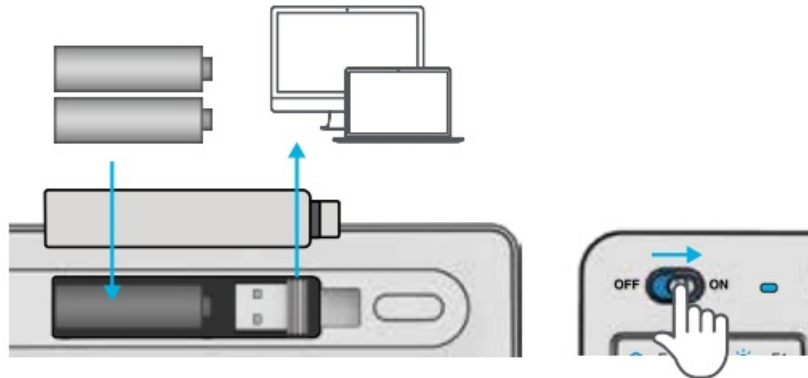
CONNECT WITH DONGLE

Install included batteries

2 batteries are included in the package

Install 2.4 dongles and turn the keyboard on

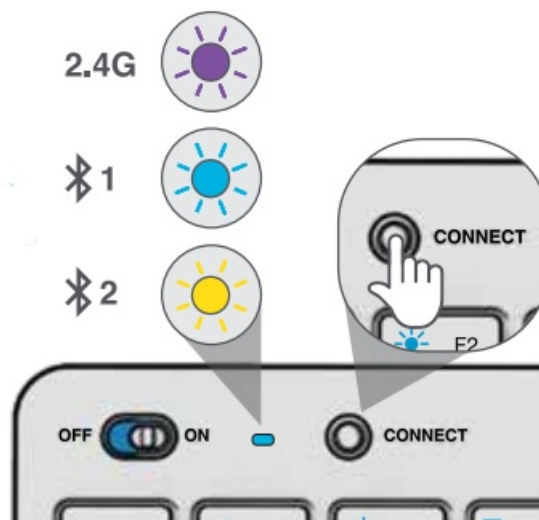
GO Keys will auto connect



Have a JLab GO Mouse?

Scan the QR code to learn how to pair both your devices with just one dongle.

CONNECT WITH BLUETOOTH



Quick Press CONNECT

Switch to preferred connection:

Purple = 2.4

Blue =

Yellow =

Press and hold CONNECT

LED will blink in pairing mode Select “JLab GO Keys” in the device settings

KEYS

Fn + 1 / 2 / 3:

Quick connection switch



Fn + Q / W / E:

Switch to Mac / Android / Windows keyboard layout

MEDIA DIAL

- Vol +/- : Rotate
- Play/Pause: Single press
- Track Forward: Double press
- TrackBack: Press and hold

Fn + Right Shift:

Lock / Unlock Fn key (See Shortcut Keys)

SHORTCUT KEYS

Fn +	MAC	PC	Android
Esc	N/A	Homepage	Homepage
F1	Brightness –	Brightness –	Brightness –
F2	Brightness +	Brightness +	Brightness +
F3	Task Control	Task Control	N/A
F4	Show Applications	Notification Center	N/A
F5	Search	Search	Search
F6	Desktop	Desktop	N/A
F7	Track Back	Track Back	Track Back
F8	Play/Pause	Play/Pause	Play Pause
F9	Track Forward	Track Forward	Track Forward
F10	Mute	Mute	Mute
F11	Screenshot	Screenshot	Screenshot
F12	Dashboard	Calculator	N/A
Delete	Screen lock	Screen lock	Screen lock

QUICK TIPS

- When connecting through Bluetooth on Mac/PC/Android, the GO Keyboard should be in Bluetooth 1 or Bluetooth 2 setting. Press the hold CONNECT button until the light starts blinking. Enter your Bluetooth device settings to connect.
- If your device is not connecting, Forget the “JLab GO Keys” in your device settings. Turn off and on the GO Keyboard. Press hold the CONNECT button until the blinking light enters pairing mode. Reenter your device settings to repair.
- If the 2.4G USB dongle is not registering a connection:
 - Remove dongle
 - Press Fn + 1 to enter 2.4G connection
 - Press and hold CONNECT button until the purple light blinks
 - Plug the dongle back in
- Keys are non-removable. Do not try to remove in any circumstance.
- To clean the keyboard, do not use spray cleaner directly on the keyboard. Lightly spray a cloth or microfiber fabric and then wipe the keyboard.
- To completely disconnect all wireless devices and return to factory settings, press hold “T”+”H”+”J” for 3+ seconds.

Shop products | Product alerts | Burn-in your headphones

REGISTER TODAY

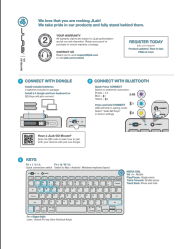
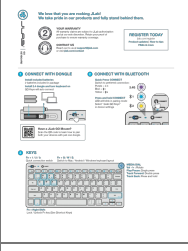
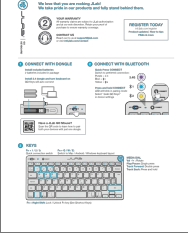
jlab.com/register

Product updates | How-to tips

FAQs & more



Documents / Resources

	<p>JLAB GO Wireless Keyboard [pdf] User Manual GO Wireless Keyboard, GO Wireless, Keyboard, GO Wireless Keyboard</p>
	<p>JLAB Go Wireless Keyboard [pdf] User Guide Go Wireless Keyboard, Go, Wireless Keyboard, Keyboard</p>
	<p>JLAB Go Wireless Keyboard [pdf] User Manual Go Wireless Keyboard, Go, Wireless Keyboard, Keyboard</p>

References

- 🔊 [JLab International: True Wireless Earbuds, Headphones, Microphones](#)
- 🔊 [Contact Us - JLab International](#)
- 🔊 [Register Your Product - JLab International](#)
- 🔊 [JLab: True Wireless Headphones, Earbuds, Microphones, Personal Audio](#)
- 🔊 [Contact Us – JLab](#)
- 🔊 [Register Your Product – JLab](#)