



JLAB GO Keyboard Multi-Device Ultra-Compact Wireless Keyboard User Manual

[Home](#) » [JLab](#) » JLAB GO Keyboard Multi-Device Ultra-Compact Wireless Keyboard User Manual 

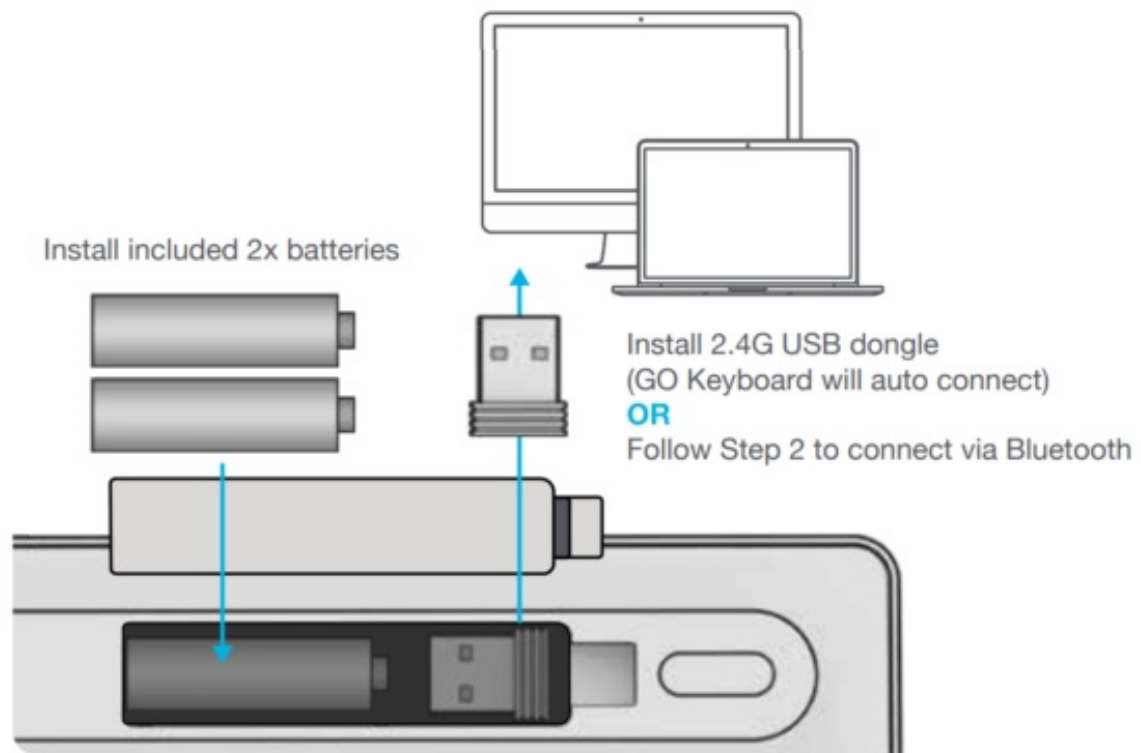


We love that you are rocking JLab!
We take pride in our products and fully stand behind them.

Contents

- [1 SETUP](#)
- [2 CONNECT](#)
- [3 KEYS](#)
- [4 Documents / Resources](#)
 - [4.1 References](#)
- [5 Related Posts](#)

SETUP



CONNECT

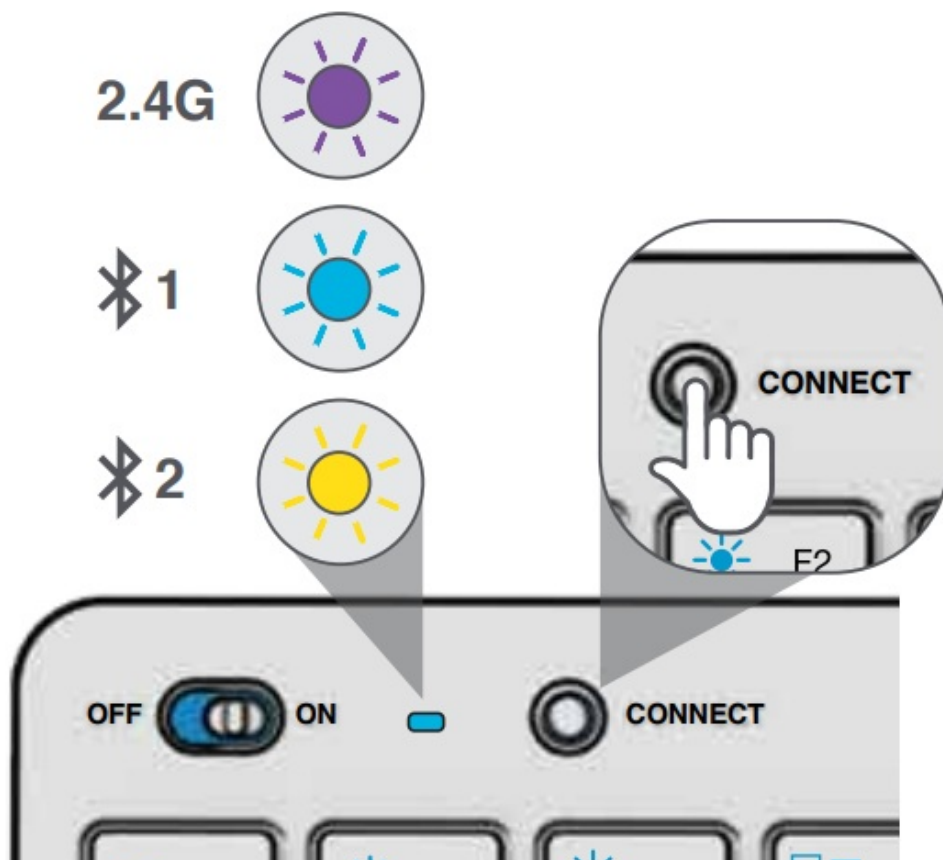
SWITCH CONNECTION:

Quick Press CONNECT (Light switches to associated connection)

BLUETOOTH PAIRING:

Switch to  1 or  2

Press and hold CONNECT (Blinking light) Select "JLab GO Keys" in device settings.



KEYS

Fn + 1 / 2 / 3:

Quick connection switch

Fn + Q /W/E:

Switch to Mac/Android/Windows keyboard layout



MEDIA DIAL

Vol +/- : Rotate

Play/Pause: Single press

Track Forward: Double press

TrackBack: Press and hold

Fn + Right Shift:

Lock / Unlock Fn key (See Shortcut Keys)

SHORTCUT KEYS

Fn +	MAC	PC	Android
Esc	N/A	Homepage	Homepage
F1	Brightness –	Brightness –	Brightness –
F2	Brightness +	Brightness +	Brightness +
F3	Task Control	Task Control	N/A
F4	Show Applications	Notification Center	N/A
F5	Search	Search	Search
F6	Desktop	Desktop	N/A
F7	Track Back	Track Back	Track Back
F8	Play/Pause	Play/Pause	Play Pause
F9	Track Forward	Track Forward	Track Forward
F10	Mute	Mute	Mute
F11	Screenshot	Screenshot	Screenshot
F12	Dashboard	Calculator	N/A
Delete	Screen lock	Screen lock	Screen lock

QUICK TIPS

- When connecting through Bluetooth on Mac/PC/Android, the GO Keyboard should be in Bluetooth 1 or Bluetooth 2 setting. Press the hold CONNECT button until the light starts blinking. Enter your Bluetooth device settings to connect.
- If your device is not connecting, Forget the “JLab GO Keys” in your device settings. Turn off and on the GO Keyboard. Press hold the CONNECT button until the blinking light enters pairing mode. Reenter your device settings to repair.
- If the 2.4G USB dongle is not registering connection:
 1. Remove the dongle
 2. Press Fn + 1 to enter 2.4G connection
 3. Press and hold CONNECT button until purple light blinks
 4. Plug the dongle back in
- Keys are non-removable. Do not try to remove it in any circumstance.
- To clean the keyboard, do not use spray cleaner directly on the keyboard. Lightly spray a cloth or microfiber fabric and then wipe the keyboard.
- To completely disconnect all wireless devices and return to factory settings, press hold “T”+”H”+”J” for 3+ seconds.



Shop products | Product alerts | Burn-in your headphones
JLab Store + Burn-in Tool



YOUR WARRANTY

All warranty claims are subject to JLab authorization and at our sole discretion. Retain your proof of purchase to ensure warranty coverage.



CONTACT US

Reach out to us at support@jlab.com or visit jlab.com/contact

REGISTER TODAY

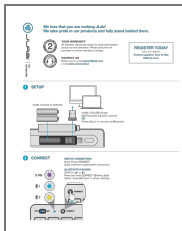
jlab.com/register

Product updates | How-to tips

FAQs & more

[JLAB.COM](https://jlab.com)

Documents / Resources



[JLAB GO Keyboard Multi-Device Ultra-Compact Wireless Keyboard](#) [pdf] User Manual
GO Keyboard, Multi-Device Ultra-Compact Wireless Keyboard, GO Keyboard Multi-Device Ultra-Compact Wireless Keyboard

References

- [🔗 JLab: True Wireless Headphones, Earbuds, Microphones, Personal Audio](#)
- [🔗 Contact Us – JLab](#)
- [🔗 Register Your Product – JLab](#)