



JLAB GO Keyboard User Guide

[Home](#) » [JLab](#) » JLAB GO Keyboard User Guide



GO Keyboard User Guide

Contents [[hide](#)]

- [1 CONNECT WITH DONGLE](#)
- [2 CONNECT WITH BLUETOOTH](#)
- [3 KEYS](#)
- [4 SHORTCUT KEYS](#)
- [5 QUICK TIPS](#)
- [6 Documents / Resources](#)
 - [6.1 References](#)
- [7 Related Posts](#)

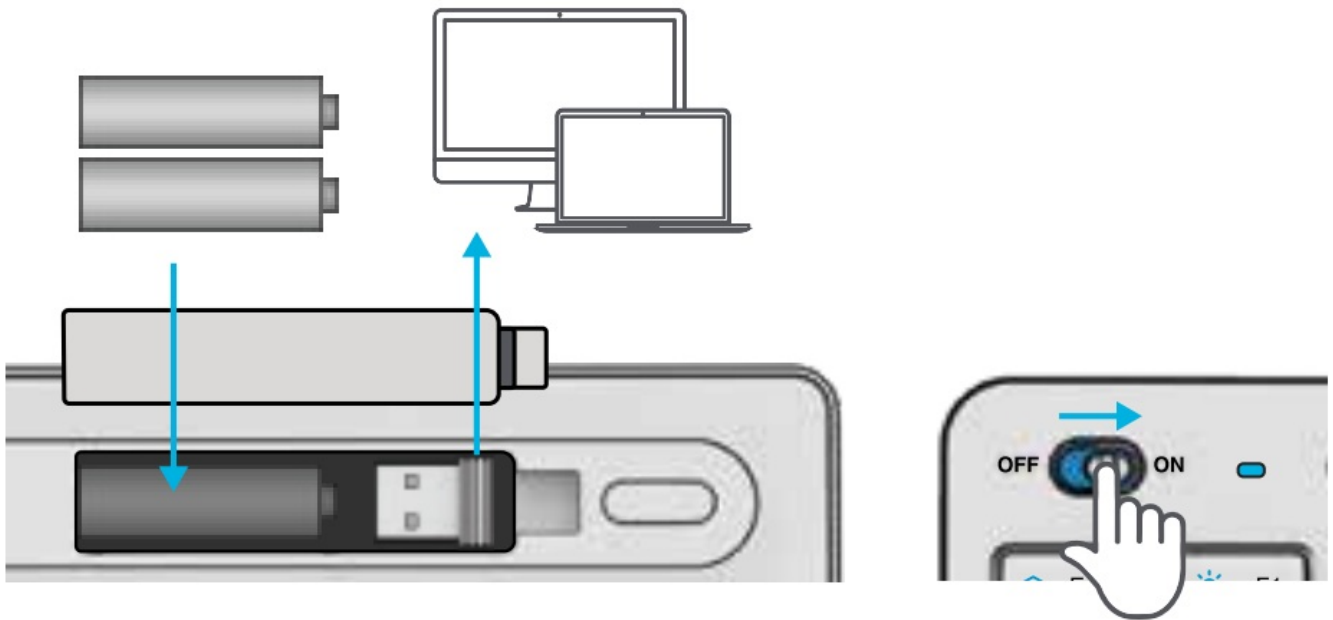
CONNECT WITH DONGLE

Install included batteries

2 batteries are included in the package

Install the 2.4 dongles and turn the keyboard on

GO Keys will auto connect





CONNECT WITH BLUETOOTH

Quick Press CONNECT

Switch to preferred connection:

Purple = 2.4

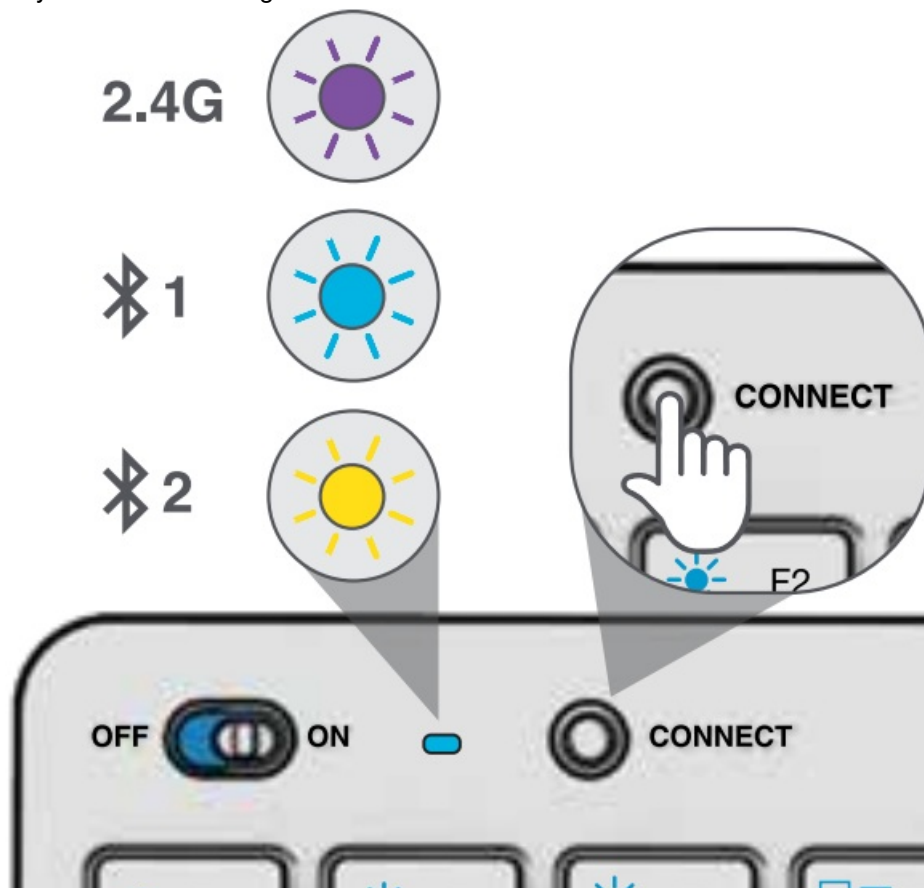
Blue =  1

Yellow =  2

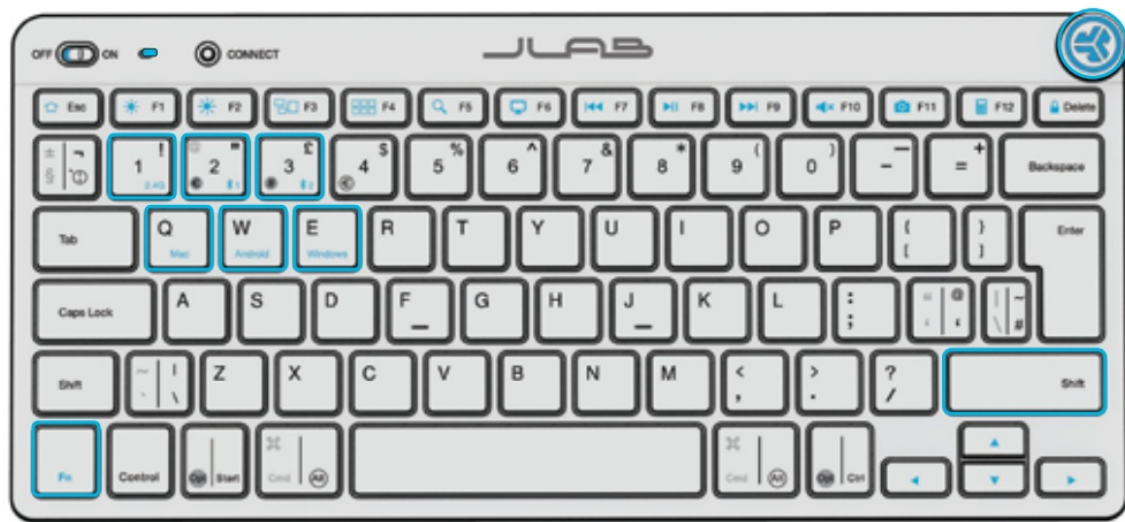
Press and hold CONNECT

LED will blink in pairing mode

Select "JLab GO Keys" in device settings



KEYS



Fn + 1/2/3:

Quick connection switch

Fn + Q/W/E:

Switch to Mac/Android/Windows keyboard layout

MEDIA DIAL

Vol +/- : Rotate

Play/Pause: Single press

Track Forward: Double press

TrackBack: Press and hold

Fn + Right Shift: Lock / Unlock Fn key (See Shortcut Keys)

SPECIAL CHARACTERS

Symbols to the left (grey) show Mac mode functions.

Symbols to the right (white) show PC functions.



Access Mac characters (grey circle) with the Opt key.

Access PC symbols (white circle) with the right Alt key.



SHORTCUT KEYS

Fn +	MAC	PC
Esc	N/A	Homepage
F1	Brightness +	Brightness Brightness
F2	Brightness –	Task
F3	Task Control	Control
F4	Show Applications	Notification Center
F5	Search	Search
F6	Desktop	Desktop
F7	TrackBack	TrackBack
F8	Play/Pause	Play/Pause
F9	Track Forward	Track Forward
F10	Mute	Mute
F11	Screenshot	Screenshot
F12	Dashboard	Calculator
Delete	Screen lock	Screen lock

QUICK TIPS

- When connecting through Bluetooth on Mac/PC/Android, the GO Keyboard should be in Bluetooth 1 or Bluetooth 2 setting.
Press the hold CONNECT button until the light starts blinking. Enter your Bluetooth device settings to connect.
- If your device is not connecting, Forget the “JLab GO Keys” in your device settings. Turn off and on the GO Keyboard.
Press hold the CONNECT button until the blinking light enters pairing mode. Reenter your device settings to repair.
- If the 2.4G USB dongle is not registering connection:
 1. Remove the dongle
 2. Press Fn + 1 to enter 2.4G connection
 3. Press and hold CONNECT button until purple light blinks
 4. Plug the dongle back in
- Keys are non-removable. Do not try to remove it in any circumstance.
- To clean the keyboard, do not use spray cleaner directly on the keyboard. Lightly spray a cloth or microfiber fabric and then wipe the keyboard.
- To completely disconnect all wireless devices and return to factory settings, press hold “T”+”H”+”J” for 3+ seconds.



Shop products | Product alerts | Burn-in your headphones

JLab Store + Burn-in Tool



We love that you are rocking JLab!

We take pride in our products and fully stand behind them.

	YOUR WARRANTY All warranty claims are subject to JLab authorization and at our sole discretion. Retain your proof of purchase to ensure warranty coverage.
	CONTACT US Reach out to us at support@jlab.com or visit intl.jlab.com/contact

REGISTER TODAY

intl.jlab.com/register

Product updates | How-to tips FAQs & more



Documents / Resources

	JLAB GO Keyboard [pdf] User Guide GO Keyboard, GO, Keyboard
--	--

References

- [JLab International: True Wireless Earbuds, Headphones, Microphones](#)
- [Contact Us - JLab International](#)
- [Register Your Product - JLab International](#)