



JLAB Go Charge Mouse User Guide

[Home](#) » [JLab](#) » JLAB Go Charge Mouse User Guide 



Go Charge Mouse User Guide

Contents

- [1 Go Charge Mouse](#)
- [2 SETUP](#)
- [3 CONNECTION](#)
- [4 Documents / Resources](#)
 - [4.1 References](#)
- [5 Related Posts](#)

Go Charge Mouse

We love that you are rocking JLab! We take pride in our products and fully stand behind them.



YOUR WARRANTY

All warranty claims are subject to JLab authorization and at our sole discretion. Retain your proof of purchase to ensure warranty coverage.



CONTACT US

Reach out to us at support@jlab.com
or visit jlab.com/contact

REGISTER TODAY

jlab.com/register

Product updates|How-to tips

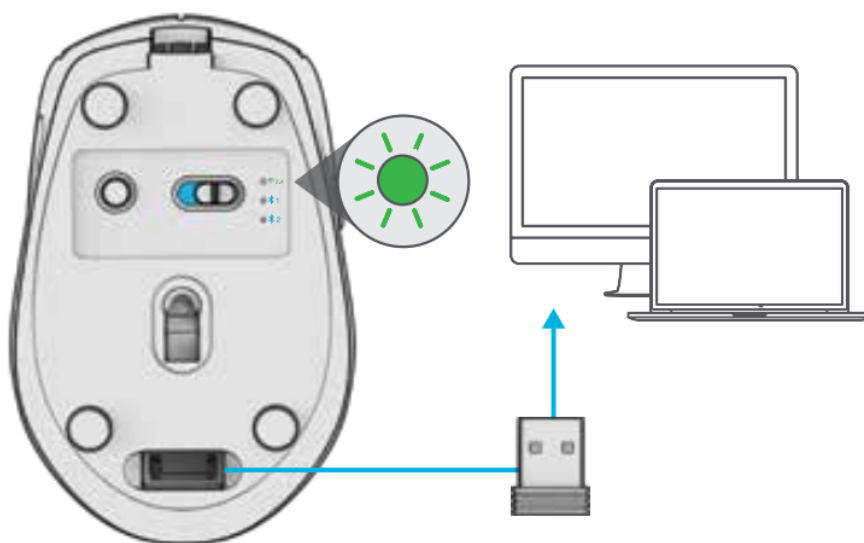
FAQs & more

SETUP

Switch GO Charge ON. Plug in if charging is needed.



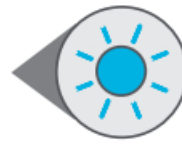
2 2.4 CONNECTION



CONNECTION



**PAIRING
MODE:**
Flashing



PAIRED:
Solid then off

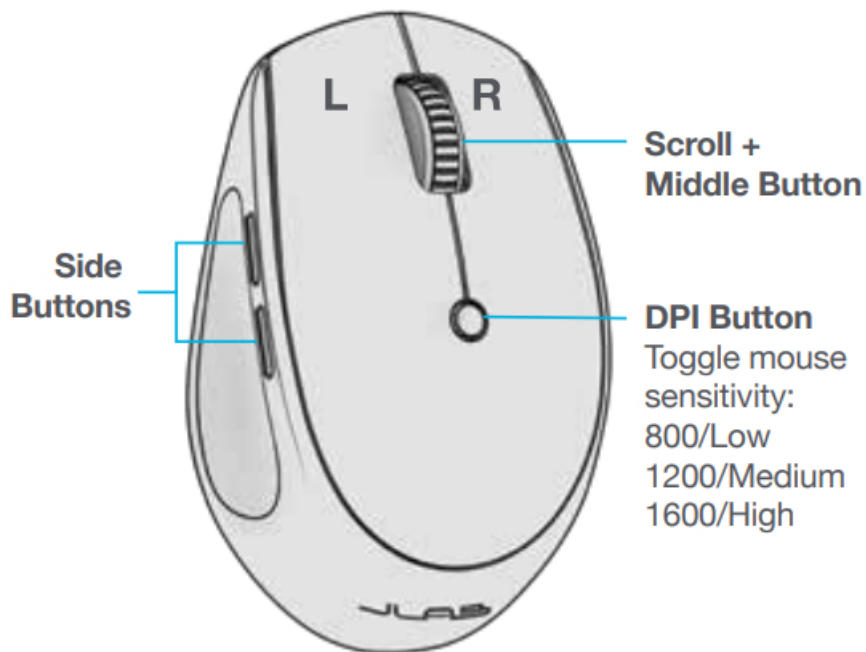
QUICK PRESS

to switch connection

PRESS AND HOLD

for Pairing Mode (Search for GO Charge in device settings to connect)

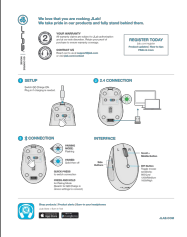
INTERFACE



Shop products|Product alerts|Burn-in your headphones
JLab Store + Burn-in Tool



Documents / Resources

	JLAB Go Charge Mouse [pdf] User Guide Go Charge Mouse, Go, Charge Mouse, Mouse
-----------------------------------------------------------------------------------	---------------------------------------------------------------------------------------------------

References

- [🔊 JLab: True Wireless Headphones, Earbuds, Microphones, Personal Audio](#)
- [🔊 Contact Us – JLab](#)
- [🔊 Register Your Product – JLab](#)

Manuals+.