



## **FLOWM Flow Keyboard and Mouse**



# **JLAB FLOWM Flow Keyboard and Mouse User Guide**

[Home](#) » [JLab](#) » JLAB FLOWM Flow Keyboard and Mouse User Guide 

### **Contents**

- [1 JLAB FLOWM Flow Keyboard and Mouse](#)
- [2 CONNECT WITH DONGLE](#)
- [3 CONNECT MOUSE WITH BLUETOOTH](#)
- [4 KEYS/CONTROLS](#)
- [5 SHORTCUT KEYS](#)
- [6 TROUBLESHOOTING](#)
- [7 WE GOT YOUR BACK](#)
- [8 Documents / Resources](#)
  - [8.1 References](#)



**JLAB FLOWM Flow Keyboard and Mouse**



## LATEST AND GREATEST

- Our team is constantly improving your product experience.
- This model may have new features or controls which are not detailed in this guide.

For the latest version of the manual, scan the QR code below.



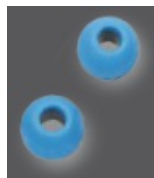
## WITH LOVE FROM THE LAB

We have lots of different ways to show we care.

## GET STARTED + FREE GIFT

Product updates | How-to tips | FAQs & more

Go to [jlab.com/register](https://jlab.com/register) to unlock your customer benefits including a gift.



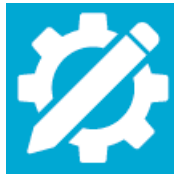
Gift for US only. No APO/FPO/DPO addresses.

## WELCOME TO THE LAB

The Lab is where you'll find real people, developing great products, in a real place called San Diego.

**Designed for You**

We listen to what you want and we're always looking for ways to make everything easier and better for you.



### **Surprisingly Awesome Value**

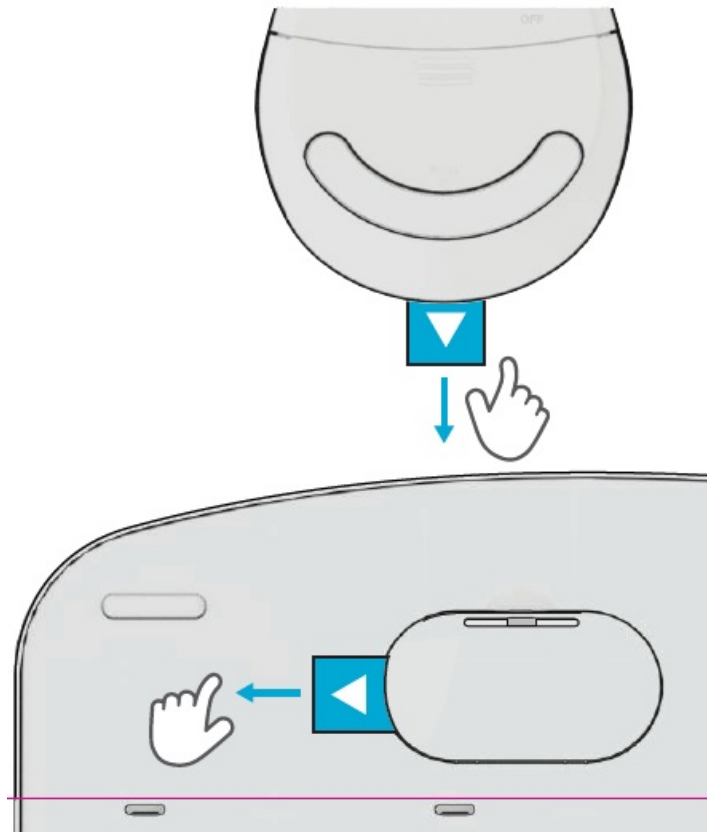
We always pack the most functionality and fun into every product at a truly accessible price.

### **#yourkindoftech**

Tech is all about you

### **CONNECT WITH DONGLE**

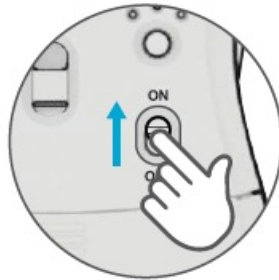
1. Remove pull tabs, batteries already installed in both devices



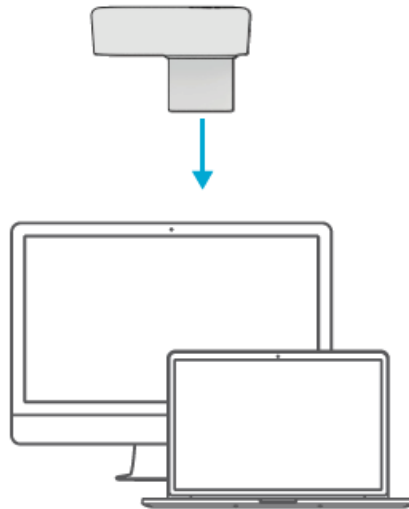
2. Switch both devices on



Switch both devices on



3. Install 2.4G USB dongle



## CONNECT MOUSE WITH BLUETOOTH

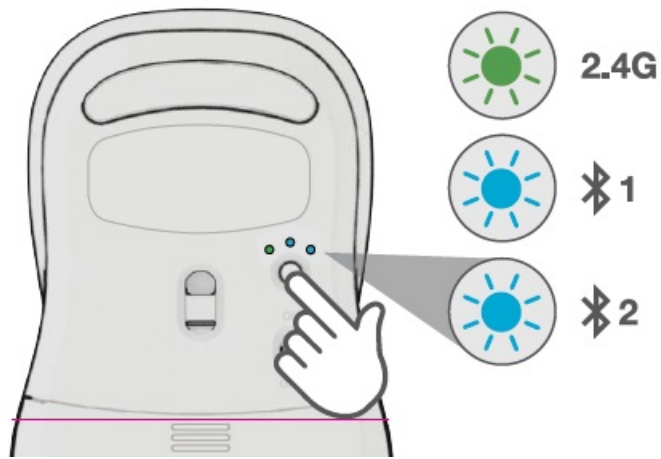
### 1. SWITCH CONNECTION:

#### 1. Quick press button

(Light switches to associated connection)

### 2. PAIRING

1. Press and hold the button to enter pairing mode
2. Select "Flow Mouse" in device settings



**Scroll +  
Middle Button**

**DPI Button:**

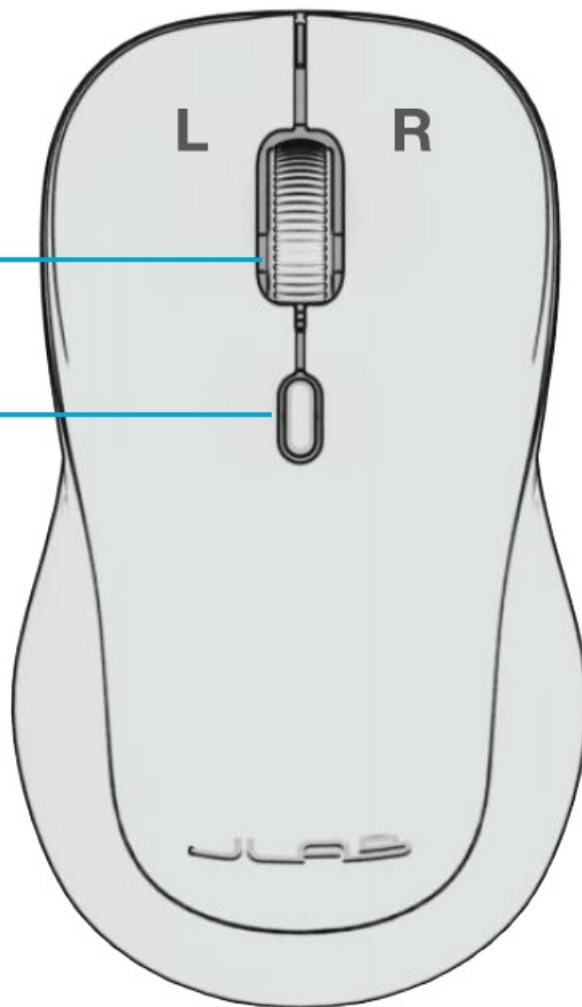
Toggle mouse  
sensitivity:

800/Low



1200/Medium

1600/High

2400/Very High



### 1. SWITCH CONNECTION:

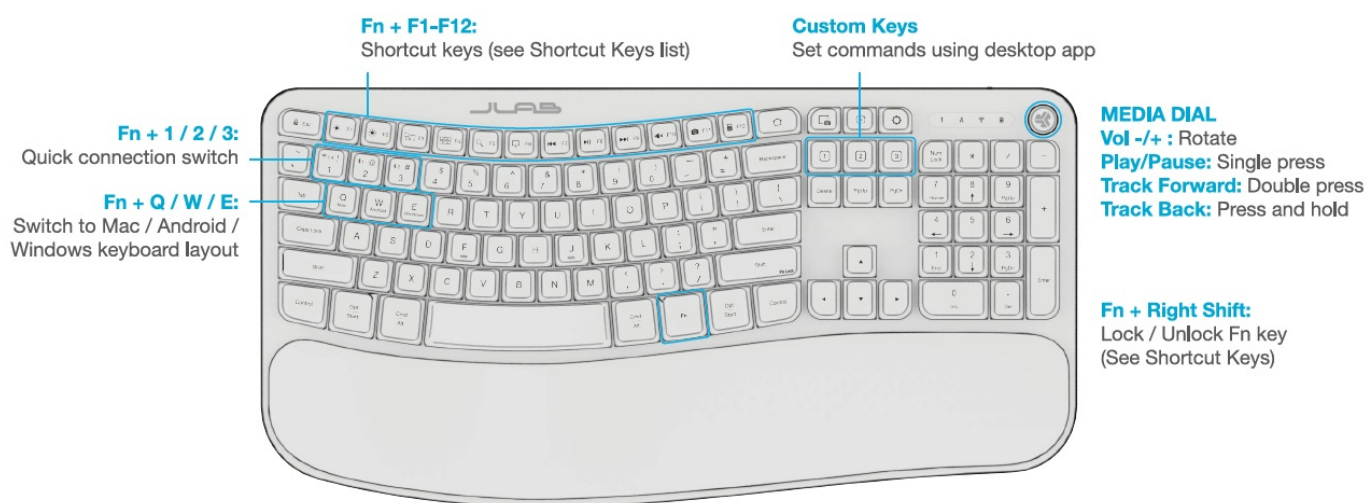
Quick press Fn +  1 or  2 (Light switches to associated connection color)

### 2. PAIRING

Press hold Fn +  1 or  2 to enter Pairing Mode (Blinking light) Select "Flow Keys" in the device settings



## KEYS/CONTROLS



## SHORTCUT KEYS

<b>Fn +</b>	<b>MAC</b>	<b>PC</b>	<b>Android</b>
<b>Esc</b>	N/A	Homepage	Homepage
<b>F1</b>	Brightness -	Brightness -	Brightness -
<b>F2</b>	Brightness +	Brightness +	Brightness +
<b>F3</b>	Task Control	Task Control	N/A
<b>F4</b>	Show Applications	Notification Center	N/A
<b>F5</b>	Search	Search	Search
<b>F6</b>	Desktop	Desktop	N/A
<b>F7</b>	Track Back	Track Back	Track Back
<b>F8</b>	Play/Pause	Play/Pause	Play/Pause
<b>F9</b>	Track Forward	Track Forward	Track Forward
<b>F10</b>	Mute	Mute	Mute
<b>F11</b>	Screenshot	Screenshot	Screenshot
<b>F12</b>	Dashboard	Calculator	N/A
<b>Delete</b>	Screen lock	Screen lock	Screen lock

## TROUBLESHOOTING

If your device is not connecting to Bluetooth, forget the Flow Keys or Flow Mouse in your device settings. Turn the device off and on. Press and hold for bluetooth connection until a blinking blue light indicates pairing mode. Reenter your device settings to repair.

### 1. If the USB dongle is not registering the keyboard:

1. Remove dongle
2. Press Fn + 1 to enter a 2.4G connection
3. Press + hold the CONNECT button until the green light blinks quickly
4. Plug the dongle back in

### 2. If the USB dongle is not registering the mouse:

1. Remove dongle
2. Quick press the Connect button until the LED blinks green to indicate 2.4G mode
3. Press and hold the Connect button until the green light blinks quickly
4. Plug the dongle back in

## WE GOT YOUR BACK

We're obsessed with creating the best possible experience around owning our products. If you have any questions, concerns, or feedback, we're here for you. Contact a real human on our U.S.-based customer support team:

- **Website:** [jlab.com/contact](https://jlab.com/contact)

- **Email:** [support@jlab.com](mailto:support@jlab.com)
- **Phone U.S.:** +1 [405-445-7219](tel:405-445-7219)
- (Check hours [jlab.com/hours](http://jlab.com/hours))
- **Phone U.K./EU:** +44 (20) 8142 9361
- (Check hours [jlab.com/hours](http://jlab.com/hours))


Visit [jlab.com/warranty](http://jlab.com/warranty) to initiate a return or exchange.

- **FCC D:** 2AHW-FLOWKB
  - 2AHW-FLOWM
  - 2AHW-MKDGLC
- **IC:** 21316-FLOWKB
  - 21316-FLOWM
  - 21316-MKDGLC

**Distributed in the U.K. by JLab c/o Tiogo Limited**  
21 Headlands Business Park, Ringwood, Hampshire BH24 3PB United Kingdom

**EU Importer: JLab**  
5927 Landau Ct., Carlsbad, CA 92008 USA

**Documents / Resources**

	<a href="#">JLAB FLOWM Flow Keyboard and Mouse</a> [pdf] User Guide 2AHYV-FLOWM, 2AHYVFLOWM, FLOWM Flow Keyboard and Mouse, FLOWM, Flow Keyboard and Mouse, Keyboard and Mouse, Mouse, Keyboard
---	--

**References**

- [User Manual](#)

[Manuals+](#), [Privacy Policy](#)

This website is an independent publication and is neither affiliated with nor endorsed by any of the trademark owners. The "Bluetooth®" word mark and logos are registered trademarks owned by Bluetooth SIG, Inc. The "Wi-Fi®" word mark and logos are registered trademarks owned by the Wi-Fi Alliance. Any use of these marks on this website does not imply any affiliation with or endorsement.