



# JLAB FLOWKB Flow Mouse and Keyboard User Guide

[Home](#) » [JLab](#) » JLAB FLOWKB Flow Mouse and Keyboard User Guide 



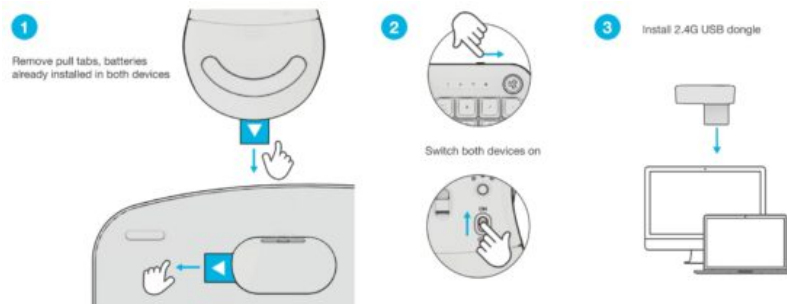
## FLOW KEYBOARD + FLOW MOUSE QUICK START GUIDE



### Contents

- [1 CONNECT WITH DONGLE](#)
- [2 CONNECT MOUSE WITH BLUETOOTH](#)
- [3 CONNECT KEYBOARD WITH BLUETOOTH](#)
- [4 KEYS / CONTROLS](#)
- [5 SHORTCUT KEYS](#)
- [6 TROUBLESHOOTING](#)
- [7 Documents / Resources](#)
  - [7.1 References](#)

## CONNECT WITH DONGLE



## CONNECT MOUSE WITH BLUETOOTH

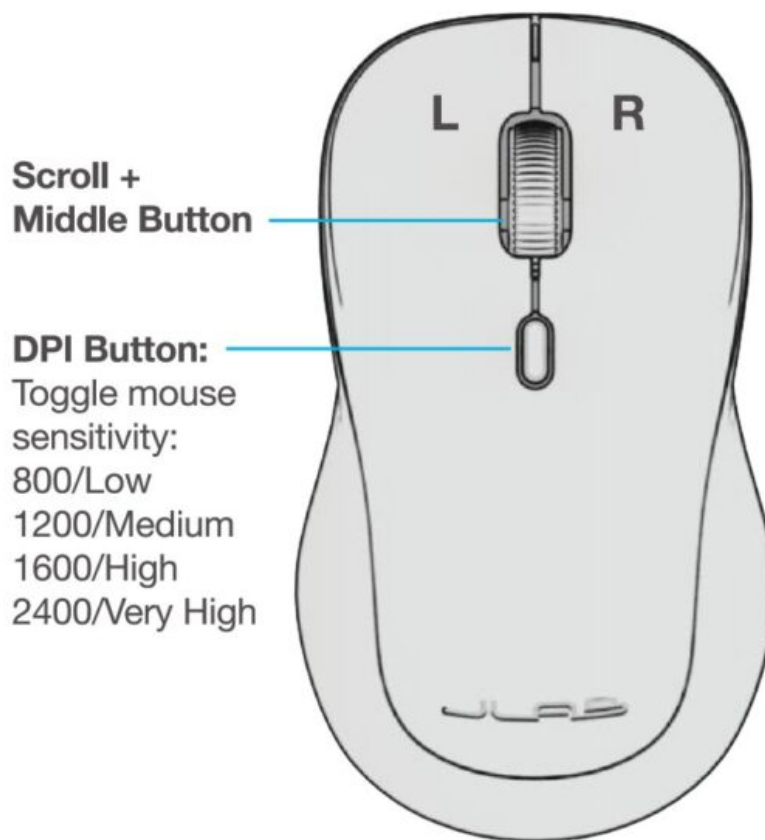
### 1. SWITCH CONNECTION:

Quick press button (Light switches to associated connection)

### 2. PAIRING



Press and hold button to enter pairing mode Select "Flow Mouse" in device settings







## CONNECT KEYBOARD WITH BLUETOOTH

### 1. SWITCH CONNECTION:

Quick press Fn +  or  (Light switches to associated connection color)

### 2. PAIRING

Press hold Fn +  or  to enter Pairing Mode (Blinking light) Select "Flow Keys" in device settings



## KEYS / CONTROLS



## SHORTCUT KEYS

<b>Fn +</b>	<b>MAC</b>	<b>PC</b>	<b>Android</b>
Esc	N/A	Homepage	Homepage
F1	Brightness –	Brightness –	Brightness –
F2	Brightness +	Brightness +	Brightness +
F3	Task Control	Task Control	N/A
F4	Show Applications	Notification Center	N/A
F5	Search	Search	Search
F6	Desktop	Desktop	N/A
F7	Track Back	Track Back	Track Back
F8	Play/Pause	Play/Pause	Play/Pause
F9	Track Forward	Track Forward	Track Forward
F10	Mute	Mute	Mute
F11	Screenshot	Screenshot	Screenshot
F12	Dashboard	Calculator	N/A
Delete	Screen lock	Screen lock	Screen lock

## LATEST AND GREATEST

Our team is constantly improving your product experience.

This model may have new features or controls which are not detailed in this guide.

**For the latest version of the manual, scan the QR code below.**



<https://qrco.de/bfVQJM>



Distributed in U.K. by: JLab c/o Tiogo Limited 21 Headlands Business Park, Ringwood, Hampshire BH24 3PB United Kingdom

EU Importer: JLab 5927 Landau Ct., Carlsbad, CA 92008 USA

## WITH LOVE FROM

We have lots of different ways to show we care.

## GET STARTED + FREE GIFT

Product updates How-to tips FAQs & more

Go to [jlab.com/register](http://jlab.com/register) to unlock your customer benefits including a free gift.  
Gift for US only. No APO/FPO/DPO addresses.



Instructional videos at: [HELP.JLAB.COM](http://HELP.JLAB.COM) or [INTL.JLAB.COM/MANUALS](http://INTL.JLAB.COM/MANUALS)

### WE GOT YOUR BACK

We're obsessed with creating the best possible experience around owning our products. If you have any questions, concerns, or feedback, we're here for you. Contact a real human on our U.S.-based customer support team:

Website: [jlab.com/contact](http://jlab.com/contact)

Email: [support@jlab.com](mailto:support@jlab.com)

Phone U.S.: +1 **405-445-7219** (Check hours [jlab.com/hours](http://jlab.com/hours))

Phone U.K./EU: +44 (20) 8142 9361 (Check hours [jlab.com/hours](http://jlab.com/hours))

Visit to [jlab.com/warranty](http://jlab.com/warranty) initiate a return or exchange.

### FCC ID:

2AHYV-FLOWKB

2AHYV-FLOWM

2AHYV-MKDGLC

### IC:

21316-FLOWKB

21316-FLOWM

21316-MKDGLC



### WELCOME TO THE LAB

The Lab is where you'll find real people, developing really great products, in a real place called San Diego.

### PERSONAL TECH DONE BETTER


	<b>Designed for You</b> We actually listen to what you want and we're always looking for ways to make everything easier and better for you.
	<b>Surprisingly Awesome Value</b> We always pack in the most functionality and fun into every product at a truly accessible price.

#yourkindoftech

## TROUBLESHOOTING

- If your device is not connecting to Bluetooth, forget the Flow Keys or Flow Mouse in your device settings.  
Turn device off and on. Press and hold for bluetooth connection until blinking blue light indicates pairing mode.  
Reenter your device settings to re-pair.
- If the USB dongle is not registering keyboard:
  1. Remove dongle
  2. Press Fn + 1 to enter 2.4G connection
  3. Press + hold CONNECT button until green light blinks quickly
  4. Plug dongle back in
- If the USB dongle is not registering mouse:
  1. Remove dongle
  2. Quick press Connect button until LED blinks green to indicate 2.4G mode
  3. Press and hold Connect button until green light blinks quickly
  4. Plug dongle back in

## Documents / Resources

	<a href="#">JLAB FLOWKB Flow Mouse and Keyboard</a> [pdf] User Guide 2AHYV-FLOWKB, 2AHYVFLOWKB, FLOWKB Flow Mouse and Keyboard, FLOWKB, Flow Mouse and Keyboard, Mouse and Keyboard, Keyboard, Mouse
---	---

## References

- [User Manual](#)

[Manuals+](#), [Privacy Policy](#)

This website is an independent publication and is neither affiliated with nor endorsed by any of the trademark owners. The "Bluetooth®" word mark and logos are registered trademarks owned by Bluetooth SIG, Inc. The "Wi-Fi®" word mark and logos are registered trademarks owned by the Wi-Fi Alliance. Any use of these marks on this website does not imply any affiliation with or endorsement.