

JLAB Create Wireless LAV Mic System



JLAB Create Wireless LAV Mic System User Manual

[Home](#) » [JLab](#) » JLAB Create Wireless LAV Mic System User Manual 

Contents

- [1 JLAB Create Wireless LAV Mic System](#)
- [2 Product Usage Instructions](#)
- [3 FAQ](#)
- [4 Parts](#)
- [5 CONTROLS](#)
- [6 CHARGED](#)
- [7 Documents / Resources](#)
 - [7.1 References](#)
- [8 Related Posts](#)



JLAB Create Wireless LAV Mic System



Specifications:

- Microphone
- LED Indicator
- Multifunction Button
- Lapel Clip
- USB-C Dongle
- LED Connection Indicator
- Charging Case
- USB-C Charging Cable

Product Usage Instructions

Pairing:

1. Plug USB-C dongle into compatible device*. Remove single or both microphones.
2. Create Wireless: Most devices default Create Wireless as the recording source. Check your device audio settings to confirm.
 - Dongle Blinks Blue = Searching for Microphone(s)
 - Dongle Solid Blue = Microphone(s) Connected
3. *Compatible devices: Android (12 or later), USB-C mobile devices and tablets, Windows PC (7 or later), macOS (11 or later), iPhone 15+, iPad Pro 11-inch (1st generation or later), iPad Pro 12.9-inch (3rd generation or later), iPad Air (4th generation or later), iPad mini (6th generation)

Placement and Controls:

- Clip Create Wireless 12 inches or less from voice for best recording results.
- Microphone faces outside of apparel for proper connection.
- **Controls:**
 - Mute On/Off: 1x Press

- Power On/Off: Press and Hold
- Switch Gain: 3x Press
 - Mute solid red – Mute Off light off – High Gain 6ft blinks blue (6ft radius) – Low Gain 2ft blinks red (2ft radius)

Charging:

- Microphones will auto-power off and start charging when placed in the case.
- Connect the case to a computer or a 5V USB-C charger.

FAQ

- **How do I pair the wireless lav mic system with my device?** To pair the system, plug the USB-C dongle into your compatible device and remove one or both microphones. Ensure that your device's audio settings are set to use the Create Wireless as the recording source.
- **How do I know if the microphones are connected to the dongle?**
 - The dongle blinks blue when searching for microphones and turns solid blue when the microphone(s) are connected.

We love that you are rocking JLab!

We take pride in our products and fully stand behind them

YOUR WARRANTY

All warranty claims are subject to JLab authorization and at our sole discretion. Retain your proof of purchase to ensure warranty coverage.

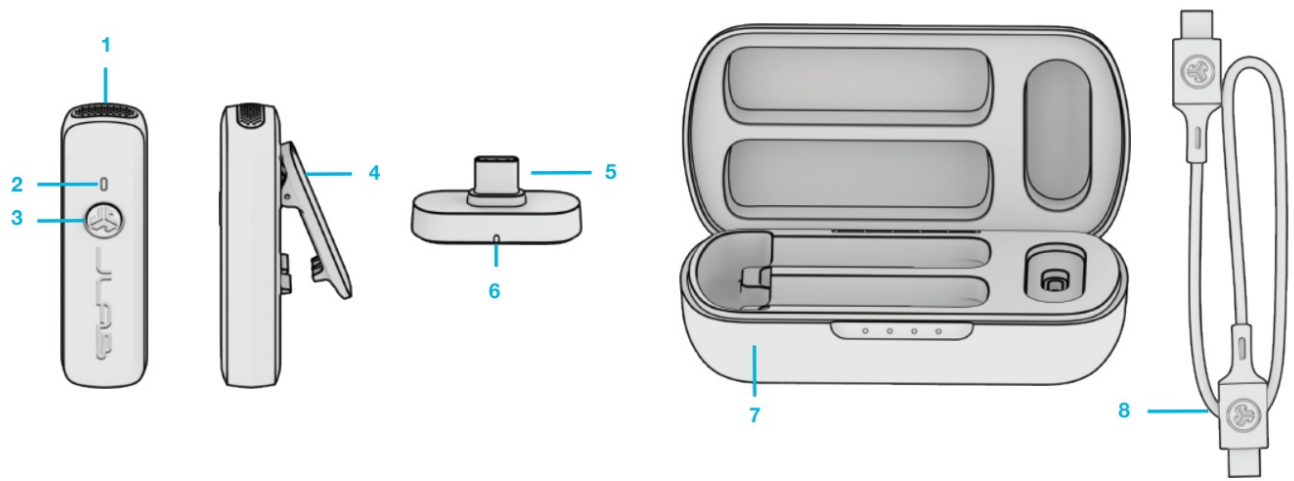
CONTACT US

Reach out to us at support@jlab.com or visit jlab.com/contact

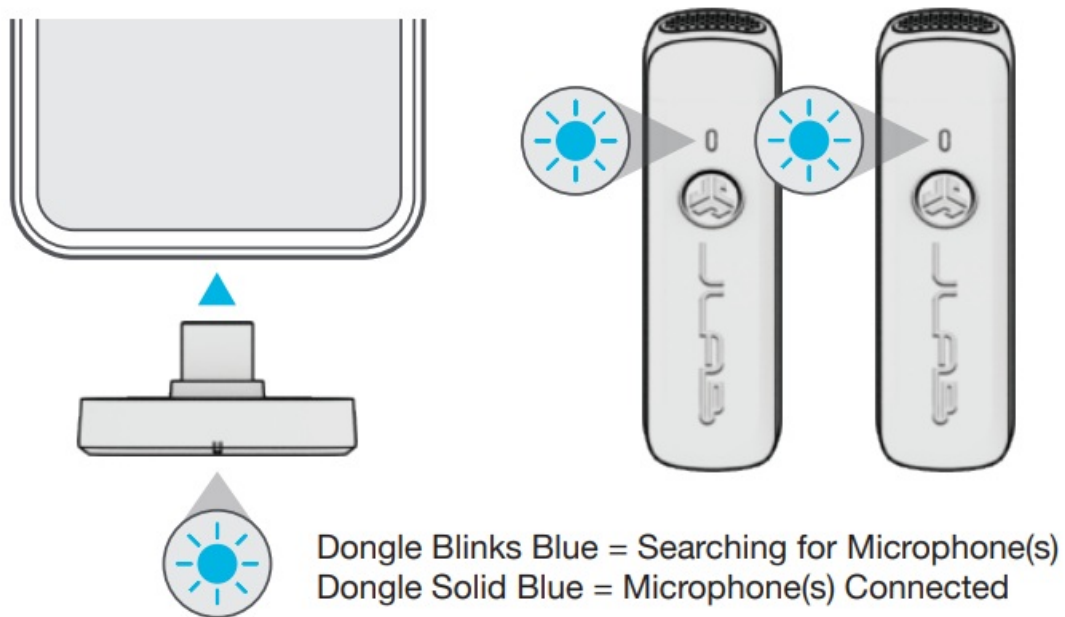
REGISTER TODAY

jlab.com/register Product updates | How-to tips FAQs & more

Parts



1. Plug USB-C dongle into compatible device*. Remove single or both microphones

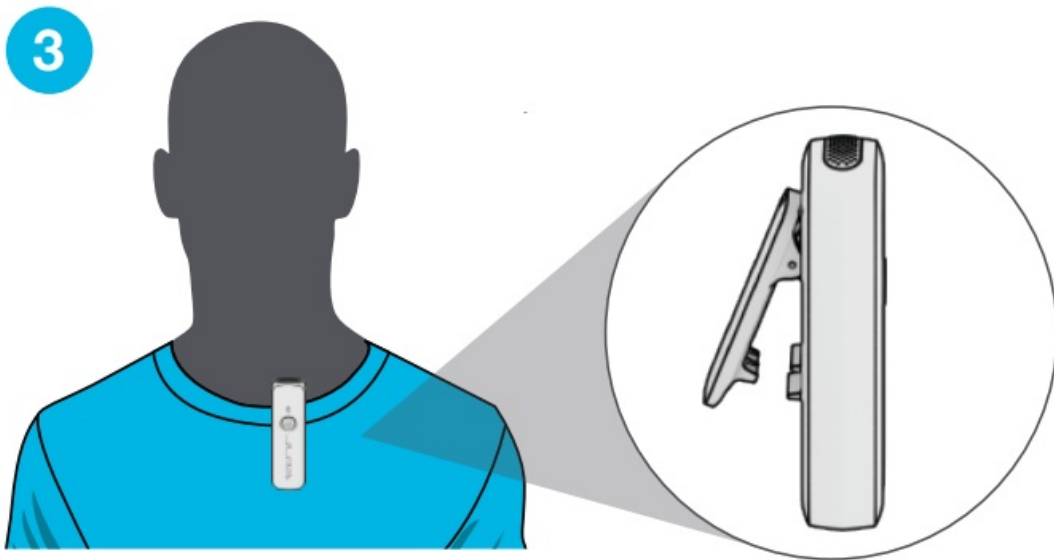


2. Most devices default Create Wireless as the recording source. Check your device audio settings to confirm

Compatible devices:

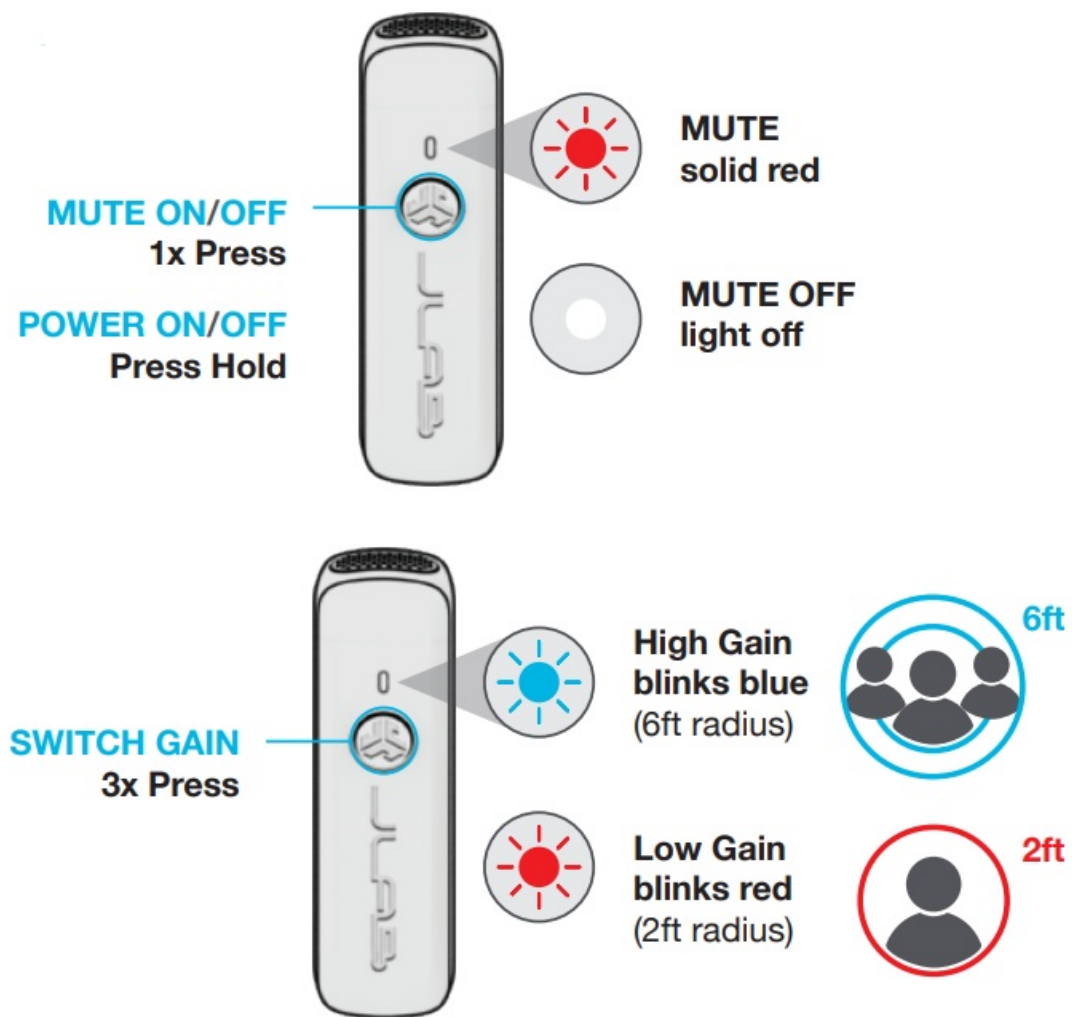
- Android (12 or later) USB-C mobile devices and tablets
- Windows PC (7 or later)
- macOS (11 or later)
- iPhone 15+
- iPad Pro 11-inch (1st generation or later)
- iPad Pro 12.9-inch (3rd generation or later)
- iPad Air (4th generation or later)
- iPad mini (6th generation)

3. Clip Create Wireless 12 inches or less from voice for best recording results.



Microphone faces outside of apparel for proper connection

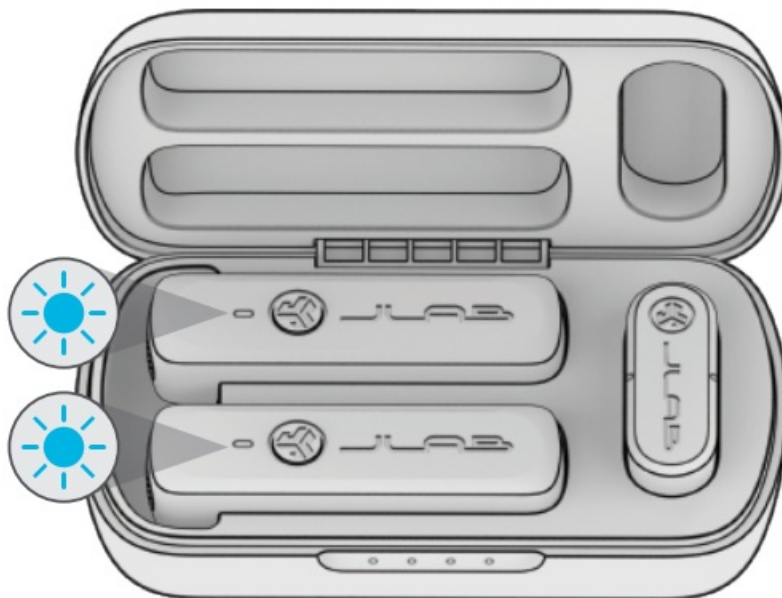
CONTROLS



CHARGED

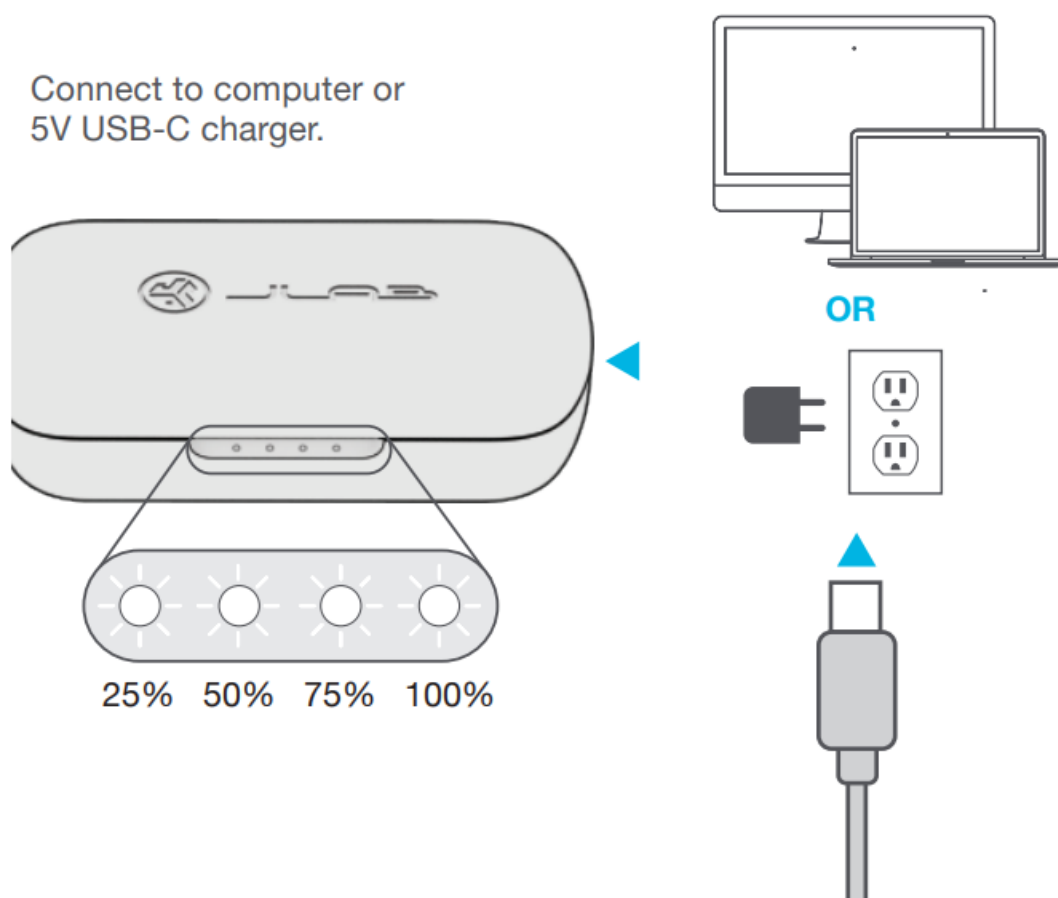
GET CHARGED (MICROPHONES)

Microphones will auto power off and start charging when placed in the case



GET CHARGED (CASE)

Connect to a computer or 5V USB-C charger



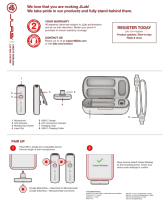
[Shop products](#) | [Product alerts](#) | [Burn-in your headphones](#)

JLab Store + Burn-in Tool

- [JLAB.COM](https://www.jlab.com)



Documents / Resources

	<p>JLAB Create Wireless LAV Mic System [pdf] User Manual</p> <p>Create Wireless LAV Mic System, Wireless LAV Mic System, LAV Mic System, Mic System, System</p>
---	---

References

- [📞 Contact Us – JLab](#)
- [📞 Register Your Product – JLab](#)
- [User Manual](#)

Manuals+ Privacy Policy

This website is an independent publication and is neither affiliated with nor endorsed by any of the trademark owners. The "Bluetooth®" word mark and logos are registered trademarks owned by Bluetooth SIG, Inc. The "Wi-Fi®" word mark and logos are registered trademarks owned by the Wi-Fi Alliance. Any use of these marks on this website does not imply any affiliation with or endorsement.