



JL AUDIO MMR-10W Wireless Remote Controller Instruction Manual

[Home](#) » [JL AUDIO](#) » JL AUDIO MMR-10W Wireless Remote Controller Instruction Manual 

Contents

- [1 JL AUDIO MMR-10W Wireless Remote Controller](#)
- [2 Product Usage Instructions](#)
- [3 FCC Compliance Statement](#)
- [4 Safety Considerations](#)
- [5 Installation Applications](#)
- [6 What is Included](#)
- [7 Product Description](#)
- [8 Receiver Module Placement & Connection](#)
- [9 Remote Cradle Mounting](#)
- [10 LED Signal Confirmation](#)
- [11 Remote Control Functions](#)
- [12 Specifications](#)
- [13 Documents / Resources](#)
 - [13.1 References](#)
- [14 Related Posts](#)



JL AUDIO MMR-10W Wireless Remote Controller



Product Information

Specifications

- Designed for operation in 12-volt, negative-ground electrical systems
- Not certified or approved for use in aircraft
- IP67 water resistance rating
- Can withstand immersion in water up to 1 meter (3.28 ft.) deep for up to 30 minutes

What's Included

- MMR-10W Remote Transmitter
- Remote Cradle
- 2 Plastic cable ties
- Flat head screw
- User Manual
- (MMR-10W only) MMR-10W Receiver Module
- 2 Pan head screws
- Quick-release lanyard

Product Usage Instructions

Receiver Module Placement & Connection

The receiver module is designed to connect directly to the S-pin connectors. Make sure to align the connectors properly. If an MMR-20 wired remote controller is installed, you can use a remote controller cable (MMC-6 or MMC-25) to extend the receiver module's mounting options. Once connected, securely route the cables using cable ties and wire clamps, keeping connections away from areas where they could be submerged in water.

Remote Cradle Mounting

For convenience, a plastic cradle is included to mount the MMR-10W remote transmitter. You can choose to mount it on a flat surface, a straight pipe/rail, or a steering wheel. Select a location that does not interfere with other factory-installed devices or safety equipment.

Surface Mount Example

Attach the cradle to a flat surface using the included flat-head screw.

Pipe/Rail Mount Example

Attach the cradle to a straight pipe/rail using the included plastic cable ties.

Steering Wheel Mount Example

Attach the cradle to a steering wheel using the included plastic cable ties.

LED Signal Confirmation

The MMR-1OW transmitter has a red LED mounted beneath the MUTE button. The LED will flash once when any button is pressed and then a second time when the button is released to confirm that the remote's transmitted signal was successfully received by the receiver module. Possible failure causes include low battery level, being out of operating range, or the receiver module not being active (MediaMaster turned OFF).

Receiver Module Programming

The transmitter and receiver included with the MMR-1OW system are already paired. You can pair up to ten (10) MMR-1OW remote transmitters to a single receiver module.

To Pair A New Transmitter (Required for MMR-1OW-Remote)

1. Disconnect +12V power from your MediaMaster by removing the 5-amp fuse from its fuse holder, unplugging its 4-pin power plug, or switching off its +12V supply circuit.
2. Press and hold both the 11+1 and H buttons on the new transmitter for at least 5 seconds until the LED flashes rapidly.
3. Reconnect +12V power to your MediaMaster.
4. The new transmitter will now be paired with the receiver module.

FAQ

- Q: Can I use this product in an aircraft?
A: No, this product is not certified or approved for use in aircraft.
- Q: Can I submerge the remote underwater for a long time?
A: No, while the remote is designed to be water-resistant, it should not be submerged under water for prolonged periods or subjected to excessive pressure that exceeds its depth rating.
- Q: How many MMR-1OW remote transmitters can be paired with a single receiver module?
A: Up to ten (10) MMR-1OW remote transmitters can be paired with a single receiver module.

FCC Compliance Statement

NOTE: This equipment has been tested and found to comply with the limits of Part 15 of the FCC Rules. These limits are designed to provide reasonable protection against harmful interference in a residential installation. This equipment generates, uses, and can radiate radio frequency energy and, if not installed under the instructions, may cause harmful interference to radio communications. However, there is no guarantee that interference will not occur in a particular installation. If this equipment does cause harmful interference to radio or television reception, which can be determined by turning the equipment off and on, the user is encouraged to try to correct the interference by one or more of the following measures:

- Reorient or relocate the receiving antenna.

- Increase the separation between the equipment and receiver.
- Connect the equipment to an outlet on a circuit different from that to which the receiver is connected.
- Consult the dealer or an experienced radio/TV technician for help.

Any changes or modifications not expressly approved by the party responsible for compliance could void the user's authority to operate this equipment.

Safety Considerations

- Install the receiver module in a dry, well-ventilated location that does not interfere with your factory-installed systems. If a dry environment is not available, a location that is not exposed to heavy splashing may be used. Do not install it where it will be directly exposed to the elements
- Securely mount the receiver module to avoid coming loose in the event of a collision, sudden jolt, or as a result of repeated vibrations during normal use.
- While the remote transmitter is designed to be water-resistant, it should never be submerged under water for prolonged periods or subjected to high-pressure water spray.
- Do not mount the remote cradle or receiver module in an engine compartment or areas of extreme heat. Areas exposed to a heater or hot air should also be avoided.
- Check before drilling to make sure that you will not be drilling into an exterior panel/hull, fuel tank, gas/brake line, wiring harness, or other vital system.
- Protect all wiring from sharp edges and wear by carefully routing them, tying them down, and using grommets and loom where appropriate. Secure all wiring using cable ties or wire clamps, as needed

Installation Applications

This product is designed for operation in 12-volt, negative-ground electrical systems. Using this product in systems with positive ground and/or voltages other than 12 volts may result in damage to the product and will void the warranty. This product is not certified or approved for use in aircraft.

What is Included

- (1) MMR-IOW Remote Transmitter
- (1) Remote Cradle
- (2) Plastic cable ties
- (1) Flat head screw
- (1) User Manual

Also Included (MMR-IOW only)

- (1) MMR-IOW Receiver Module
- (2) Pan head screws
- (1) Quick-release lanyard

Product Description

The MMR-10W is a wireless remote controller designed to add handheld control functionality to Media Master™

source units. Utilizing state-of-the-art. 2.4 GHz wireless technology, the MMRIOW permits control of your Media Master• source unit (with LED signal confirmation), from up to 150ft (45 m) away. The system consists of a hideaway receiver module and a water-resistant (IP67-rated) remote transmitter. The receiver module is designed to connect directly to your Media Master• and is programmable. with the ability to pair with up to ten MMR-10W remote transmitters A versatile mounting cradle is included, along with a lanyard for convenient, on-the-go functionality.

IP67 Water Resistance Rating

The MMR-10W remote transmitter has been tested to withstand immersion in water, up to 1 meter (3.28 ft.) deep, for up to 30 minutes.

Note: While designed to be water-resistant. the remote should never be submerged under water for prolonged periods or subjected to activity that creates pressure on it that exceeds its depth rating.

Receiver Module Placement & Connection

While the MMR-10W receiver module can be mounted in any orientation, its installation location should be considered to optimize RF performance. For example, we recommend that you avoid mounting the receiver module directly to metal surfaces or to wire harnesses, especially those containing high-current circuits. Mounting locations in close proximity to other electronics should also be avoided to minimize wireless interference. Use the two supplied pan head screws to mount the receiver module. The receiver module is designed to connect directly to the S-pin~Remote~ plug of your MediaMaster•. Use caution when mating the connectors, as they are keyed and must be aligned to fit properly.

Note: If a MMR-20 wired remote controller is installed with your MediaMaster•, you may use a Y-adaptor (MMC-2Y) (sold separately) to add/connect the MMR-10W receiver module If space directly behind your Media Master• is limited, you may use a remote controller cable (MMC-6 or MMC-25) (each sold separately) to extend the receiver module's mounting options. Once connected, make sure that cables are securely routed using cable ties and wire clamps, keeping connections away from areas where they could be submerged in water.

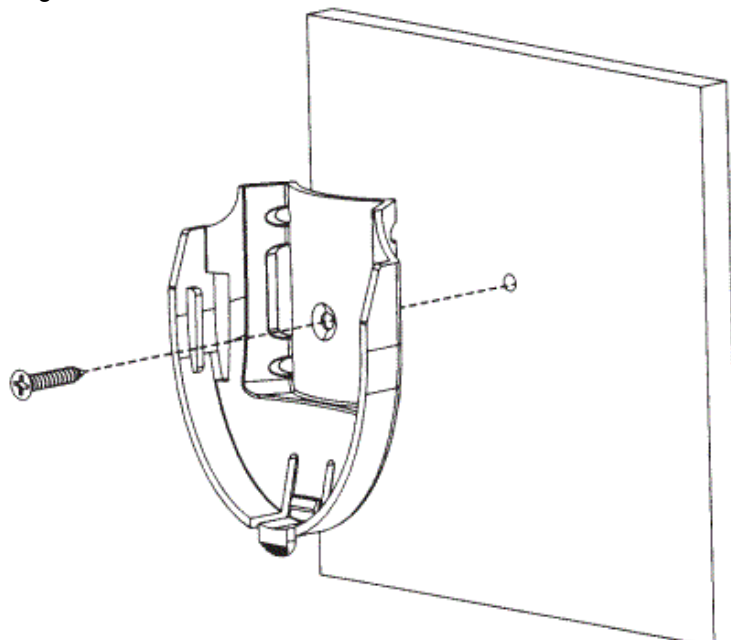
Remote Cradle Mounting

For convenience, a plastic cradle is included to mount the MMR-10W remote transmitter. The base of the cradle is designed so it can be installed on a flat surface or a tubular structure, such as a pipe/ rail or steering wheel.

Note: Select a location that does not interfere with other factory-installed devices or safety equipment. Refer to the following installation examples for more information.

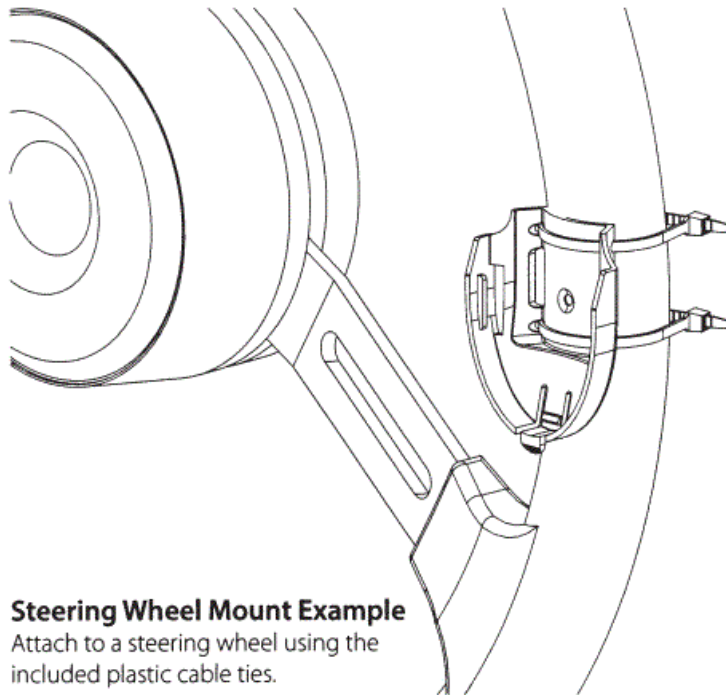
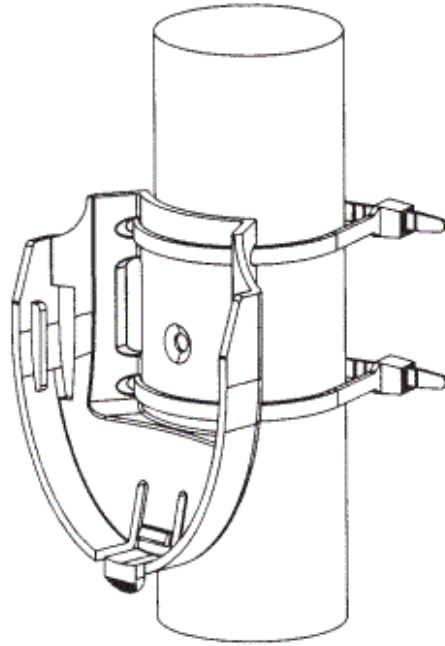
Surface Mount Example

Attach to a flat surface using the included flat head screw.



Pipe/Rail Mount Example

Attach to a straight pipe/rail using the included plastic cable ties.



Steering Wheel Mount Example
Attach to a steering wheel using the included plastic cable ties.

LED Signal Confirmation

The MMR-1 OW transmitter is equipped with a red LED mounted beneath the MUTE button. The LED will flash once when any button is pressed, and then a second time when the button is released to verify that the remote is transmitted the signal was successfully received by the receiver module

- Two short flashes indicate the signal was sent/received successfully.
- Two long flashes indicate the signal was sent but not successfully received. Possible failure causes include low battery levels, out of operating range, or the receiver module is not active (Media Master™ is turned OFF)

Receiver Module Programming

Note: The transmitter and receiver included with the MMR-1 OW system are already paired.

Up to ten (10) MMR-1 OW Remote transmitters may be paired to a single receiver module.
To Pair A New Transmitter (Required for MMR-1 OW-Remote)

1. Disconnect + 12V power from your MediaMaster by removing the 5-amp fuse from its fuse holder, unplugging its 4-pin power plug, or switching off its + 12V supply circuit.
2. Press and hold both 11+1 and H<I buttons on the transmitter, then reconnect + 12V power to your MediaMaster.
3. Continue holding both 11+1 and H<I buttons for 5 to 10 seconds, then release both buttons.
 - If successful, the status LED will emit two quick flashes with any button press.
 - If unsuccessful, the status LED will emit two long flashes with any button press.
4. Repeat steps 1 to 4 to pair additional transmitters (up to ten total).

In case of misplaced transmitters, you may delete all remotes from the receiver module's memory.

Note: All paired transmitters will stop working after deletion.




Subsequent remote functionality will require each transmitter to be paired with the receiver.

To Delete All Transmitters

1. Disconnect + 12V power from your MediaMaster by removing the 5-amp fuse from its fuse holder, unplugging its 4-pin power plug, or switching off its + 12V supply circuit.
2. Press and hold both VOL+ and VOL- buttons on an existing (paired) transmitter, then reconnect + 12V power to your MediaMaster.
3. Continue holding both VOL+ and VOL- buttons for 5 to 10 seconds, then release both buttons.
 - If successful, the status LED will emit two long flashes with any button press and the transmitter will no longer control your MediaMaster.
 - If unsuccessful, the status LED will emit two quick flashes with any button press and the transmitter will still control your MediaMaster.

Remote Control Functions

Below is a list of MMR-1 OW command functions. The functionality of some controls will vary depending on the current source and/or last tuner selected. Note: The MediaMaster source unit only accepts commands from the MMR-1 OW when its display is on a Now Playing Screen or in the SOURCE: Select menu screen:

PWR	<ul style="list-style-type: none"> • Press to turn the source unit ON • Press and hold for two seconds to turn the source unit OFF
SRC	<ul style="list-style-type: none"> • Press to turn the source unit ON • Press to cycle through sources (Last tuner/USB/Bluetooth*/AUX)
VOL+	<ul style="list-style-type: none"> • Press to increase volume
VOL-	<ul style="list-style-type: none"> • Press to decrease volume
MUTE or 	<ul style="list-style-type: none"> • Press to mute/unmute audio (AM/FM/WB/SiriusXM*/AUX) • Press to pause/resume the current selection (USB/Bluetooth*)
	<ul style="list-style-type: none"> • Press to select the next Favorite (AM/FM/WB/SiriusXM*) • Press to select the next track (USB/Bluetooth*) • Press and hold to fast-forward (USB)
	<ul style="list-style-type: none"> • Press to select the previous Favorite (AM/FM/WB/SiriusXM*) • Press to select the previous track (USB/Bluetooth*) • Press and hold to fast-rewind (USB)

Replacing the Battery

1. Remove the four screws from the back of the remote.
2. Gently separate the front half of the remote.
3. Lift and remove the silicone keypad from inside the remote.
4. Turn the remote over to remove the circuit board. The battery is installed on the back of the circuit board.
5. Carefully remove the battery from its holder and replace it with a CR2032-style battery or equivalent.
6. Reassemble the remote to ensure a watertight seal.

Specifications

Operating Frequency	2.4 GHz
Operating Range*	Up to 150 ft. (45 m)
Operating Temperature	-4 °F to +167 °F (-20 °C to +75 °C)
IP Rating (Transmitter)	IP67
IP Rating (Receiver)	IP65
Dimensions (Transmitter)	2.99 in x 2 in x 1.07 in 76 mm x 50.8 mm x 27.2 mm
Dimensions (Receiver)	4.02 in x 3.01 in x 1.42 in 102.1 mm x 76.5 mm x 36.1 mm
*Maximum operating range will vary based on installation specifics and transmitter battery level.	


2-Year Limited Warranty (U.S.A.)

Visit www.jlaudio.com for warranty details. For Service Information in the U.S.A. please call JL Audio customer service: (954) 443-1100 during normal business hours (Eastern Time) JL Audio, Inc · 10369 N Commerce Parkway, Miramar, FL 33025

International Warranties:

Products purchased outside the United States of America are covered only by that country's distributor and not by JL Audio, Inc.
SKU# 011476 12-14-2016

Documents / Resources

	<p>JL AUDIO MMR-10W Wireless Remote Controller [pdf] Instruction Manual MMR-10W Wireless Remote Controller, MMR-10W, Wireless Remote Controller, Remote Controller, Controller</p>
---	---

References

- [User Manual](#)

Manuals+, Privacy Policy

This website is an independent publication and is neither affiliated with nor endorsed by any of the trademark owners. The "Bluetooth®" word mark and logos are registered trademarks owned by Bluetooth SIG, Inc. The "Wi-Fi®" word mark and logos are registered trademarks owned by the Wi-Fi Alliance. Any use of these marks on this website does not imply any affiliation with or endorsement.