


JIPULSE 2.4G-01 2.4G Wireless Module User Manual

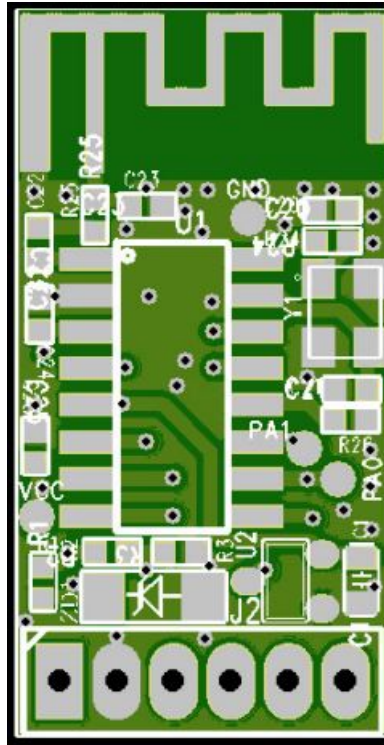
[Home](#) » [JIPULSE](#) » JIPULSE 2.4G-01 2.4G Wireless Module User Manual 

Contents

- [1 JIPULSE 2.4G-01 2.4G Wireless Module](#)
- [2 Summary](#)
- [3 TX function overview](#)
- [4 TX technical parameters](#)
- [5 Module size](#)
- [6 FCC regulatory compliance statement](#)
- [7 Documents / Resources](#)
- [8 Related Posts](#)

JIPULSE

JIPULSE 2.4G-01 2.4G Wireless Module



Summary

2.4G wireless key control module works in fitness equipment or other equipment requiring wireless control, with strong anti-interference and automatic matching function. The module is divided into transmitting and receiving, which can realize the function of two switches, and has the function of pairing and electric quantity indicating.

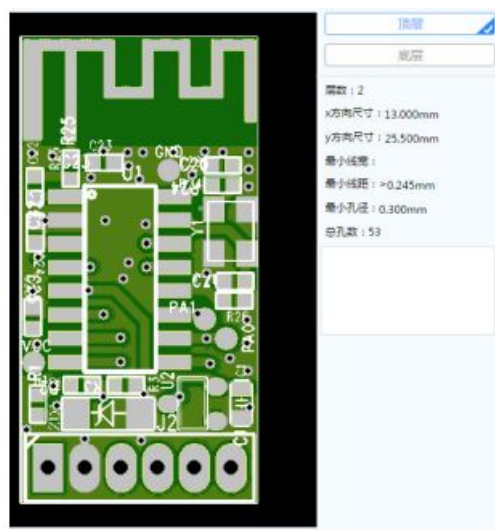
TX function overview

1. When pairing, press the keys 1 and 2 at the same time, and enter the pairing mode for 30 seconds, until the LED flashes normally, then the receiver is powered on, and the transmitter is close to the receiver, if pairing is successful. If the pairing is not successful within 60 seconds, exit the broadcast pairing function.
2. When the battery voltage is lower than 2.7V, the transmitter sends the identification code to Rx. When the battery voltage is lower than 2.4V, the LED at the transmitter flashes every second.

TX technical parameters

Supply voltage	DC2.5V~3.3V
Working peak current	18MA
Standby current	5uA
working temperature	-20~80℃
Pairing frequency	2.4G
Normal operating frequency	2.4G
modulation mode	GFSK

Module size



FCC regulatory compliance statement

15.19 Statement

This device complies with Part 15 of the FCC Rules. Operation is subject to the following two conditions: (1) this device may not cause harmful interference, and (2) this device must accept any interference received, including interference that may cause undesired operation.

15.21 Information to user

Warning: changes or modifications not expressly approved by the party responsible for compliance could void the user's authority to operate the equipment.

RF Exposure compliance statement

This Module complies with FCC radiation exposure limits set forth for an uncontrolled environment. This equipment should be installed and operated with a minimum distance of 20cm between the radiator and your body. This transmitter must not be co-located or operating in conjunction with any other antenna or transmitter

Labelling Instruction for Host Product Integrator

Please notice that if the FCC identification number is not visible when the module is installed inside another device, then the outside of the device into which the module is installed must also display a label referring to the enclosed module. This exterior label can use wording such as the following: contain FCC ID: 2AWGP24G-01MODEL " any similar wording that expresses the same meaning may be used.

§ 15.19 Labelling requirements shall be complied on end-user device. Labeling rules for special devices, please refer to §2.925, § 15.19 (a)(5) and relevant KDB publications. For E-label, please refer to §2.935.

Installation Notice to Host Product Manufacturer

The OEM integrator is responsible for ensuring that the end-user has no manual instruction to remove or install module. The module is limited to installation in mobile application, a separate approval is required for all other operating configurations, including portable configurations with respect to §2.1093 and different antenna configurations

Antenna Change Notice to Host manufacturer

If you desire to increase antenna gain and either change antenna type or use same antenna type certified, a Class II permissive change application is required to be filed by us, or you (host manufacturer) can take responsibility through the change in FCC ID (new application) procedure followed by a Class II permissive change application.

FCC other Parts, Part 15B Compliance Requirements for Host product manufacturer

This modular transmitter is only FCC authorized for the specific rule parts listed on our grant, host product manufacturer is responsible for compliance to any other FCC rules that apply to the host not covered by the modular transmitter grant of certification. Host manufacturer in any case shall ensure host product which is installed and operating with the module is in compliant with Part 15B requirements. Please note that For a Class B or Class A digital device or peripheral, the instructions furnished the user manual of the end-user product shall include statement set out in §15.105 Information to the user or such similar statement and place it in a prominent location in the text of host product manual. Original texts as following

For Class B

Note: This equipment has been tested and found to comply with the limits for a Class B digital device, pursuant to part 15 of the FCC Rules. These limits are designed to provide reasonable protection against harmful interference in a residential installation. This equipment generates, uses and can radiate radio frequency energy and, if not installed and used in accordance with the instructions, may cause harmful interference to radio communications. However, there is no guarantee that interference will not occur in a particular installation. If this equipment does cause harmful interference to radio or television reception, which can be determined by turning the equipment off and on, the user is encouraged to try to correct the interference by one or more of the following measures:

- Reorient or relocate the receiving antenna.
- Increase the separation between the equipment and receiver.
- Connect the equipment into an outlet on a circuit different from that to which the receiver is connected.
- Consult the dealer or an experienced radio/TV technician for help.

For Class A

Note: This equipment has been tested and found to comply with the limits for a Class A digital device, pursuant to part 15 of the FCC Rules. These limits are designed to provide reasonable protection against harmful interference when the equipment is operated in a commercial environment. This equipment generates, uses, and can radiate radio frequency energy and, if not installed and used in accordance with the instruction manual, may cause harmful interference to radio communications. Operation of this equipment in a residential area is likely to cause harmful interference in which case the user will be required to correct the interference at his own expense.

Documents / Resources

2.40 Wireless Module
USER MANUAL
2.40.41 MODEL

Summary

Summary

248 wireless key control models make it easier equipment or other equipment requiring wireless control, with strong anti-interference and automatic matching function.

The module is divided into transmitting and receiving, which can realize the function of two modules, and has the function of pairing and display quantity indication.

indicating

1. After pairing, press the keys 1 and 2 at the same time, and enter the pairing mode for 30 seconds, until the LED flashes normally, then the receiver is powered on, and the transmitter is close to the receiver; If pairing is successful, if the pairing is not successful within 30 seconds, wait the

breakfast pairing time

- When the battery voltage is lower than 2.7V, the transmitter sends the identification code to Rn.

every second.

Supply voltage	DC 5.0V ± 5%
----------------	--------------

T

24G-01MODEL, 24G01MODEL, 2AWGP24G-01MODEL, 2AWGP24G01MODEL, 2.4G-01 2.4
G Wireless Module, 2.4G-01, 2.4G Wireless Module