

Jindian

Model:C7401-A



Thank you for choosing the C7401-A. In order to optimize the user experience, please read this manual carefully before operation, and keep this manual properly for future use.

Contents [[hide](#)]

- 1 [Warning:](#)
- 2 [Technical Specification:](#)
- 3 [Packing list:](#)
- 4 [APP Intelligent operation introduction:](#)
- 5 [Bluetooth control steps](#)
- 6 [FCC Warning:](#)
- 7 [Documents / Resources](#)
 - 7.1 [References](#)

Warning:

1. This product is not a toy. To avoid fire, burns, personal injury or electric shock, please install out of the reach of children.
2. In order to ensure the normal operation of the lamp, please use the voltage indicated on the package.
3. Please do not modify the lamps during the warranty period.
4. Do not install near gas or electric heaters, fires, candles or any dangerous objects.
5. Before installation, please check whether the lamps and various parts are in good condition.
6. Be sure to cut off the power before installation.
7. Do not expose the lamp to corrosive conditions.
8. If the power cord is damaged, please cut off the power immediately and stop using it.

Technical Specification:

Connection method: 2.4G Wifi&Bluetooth

Control method: APP/Voice/Button/ Remote control

Adapter input voltage:100-240VAC

Adapter output voltage: 12VDC/2A

Rated working voltage: DC12V

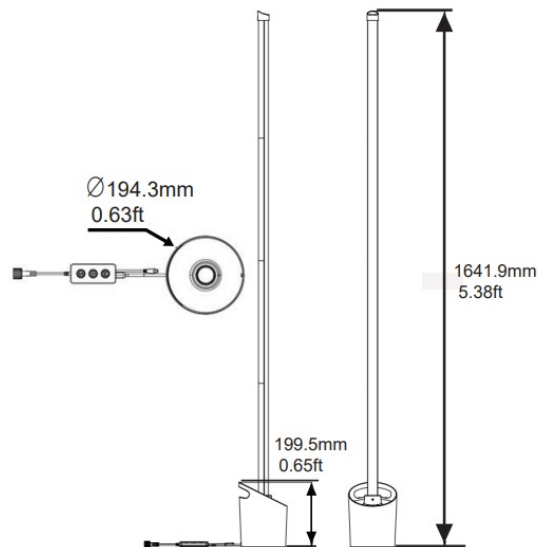
Rated power: 15W

Lamp color: RGBCW C2200K W6500K

Memory function:yes

Working temperature:-20°C~+40°C

Work with Amazon Alexa and Google Assistant.

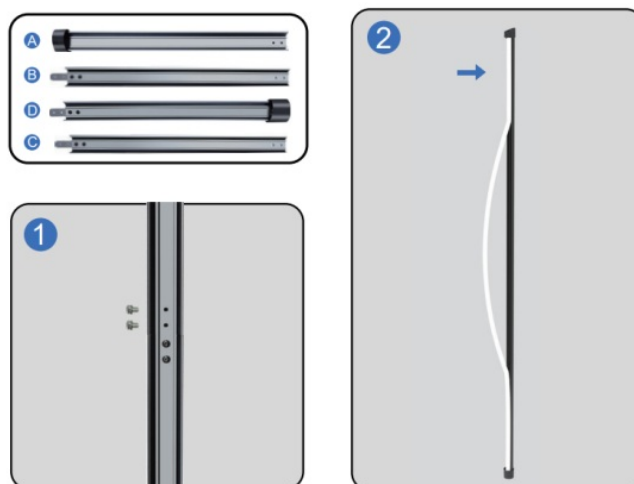


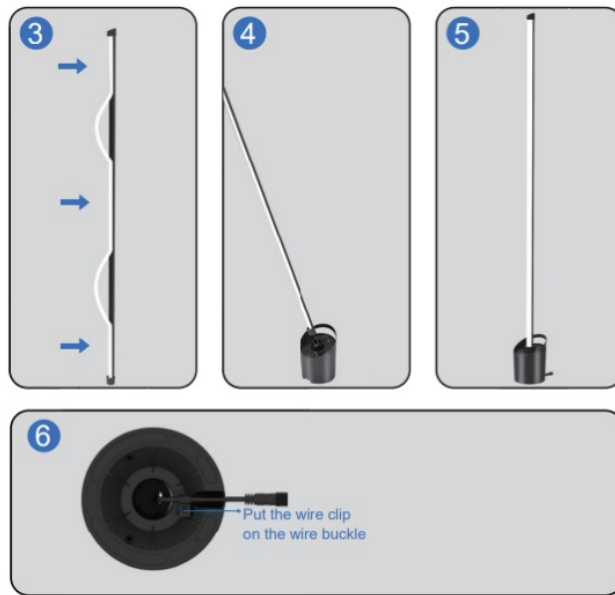
Packing list:

1. RGBCW Smart Floor Lamp * 1
2. Remote control * 1
3. Screw package * 1
4. Installation tools * 1
5. C014 controller/12V2A power supply * 1
6. Copy of the manual * 1
7. After sales service card * 1

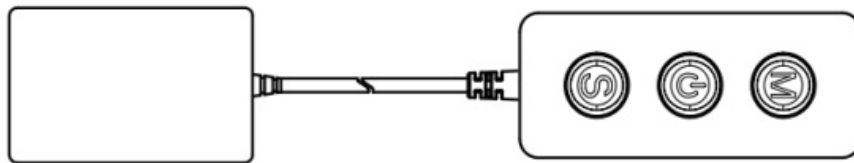


Installation Method:

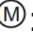






Manual of Controller:



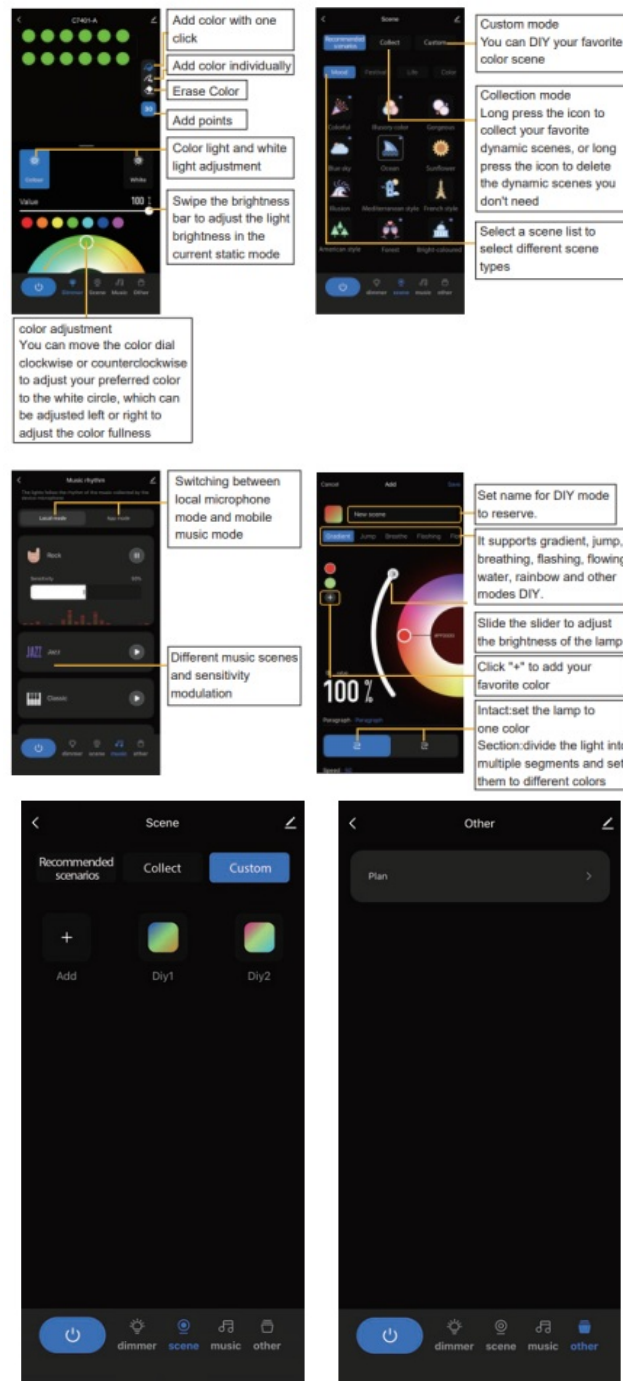
Button Instruction:

Mode key : Scene mode conversion.

Speed key : Scene mode speed adjustment.

Switch  : Short press is on/off. When the device is on, long press in 5 seconds is reset to pairing mode. Light will blink in Red.

APP Intelligent operation introduction:

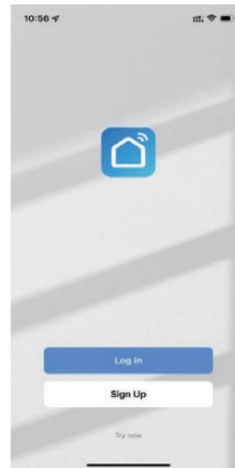
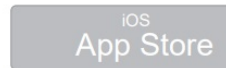


Pairing Instruction:

APP Download. Search the Smart Life from Google Play or App Store.

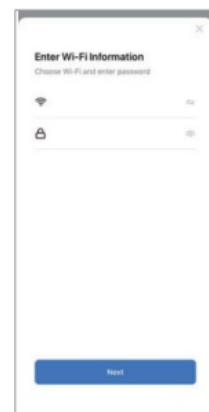
You can also scan the QR code from below.

1. Download the APP and Log In with existing account or Sign Up the new account.

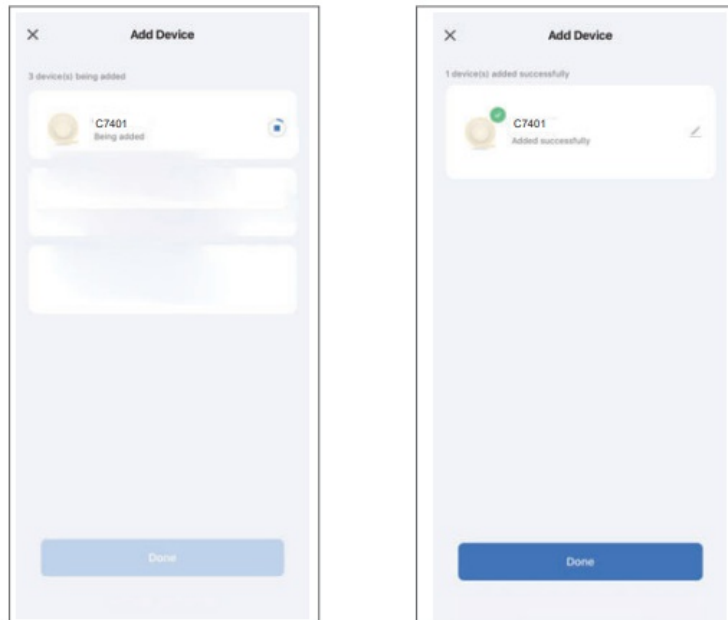


<https://smartapp.tuya.com/smartlife>

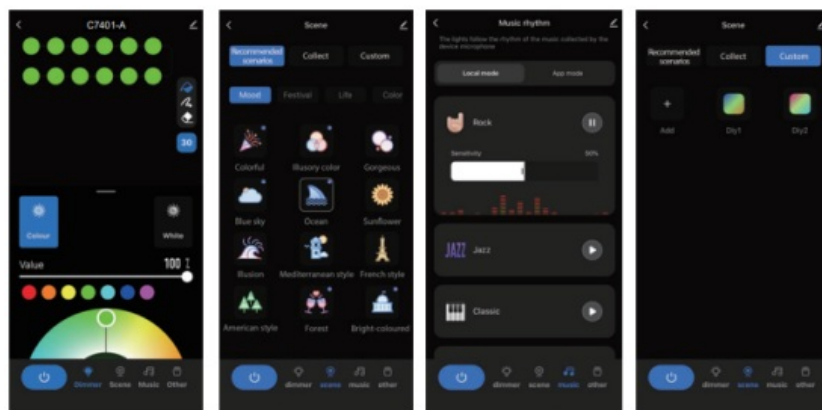
2. Turn on the power of the device, turn on the Bluetooth and Wi-Fi of the mobile phone, and make sure that the mobile phone is in the 2.4G network state. Press and hold the key for about 3-5 seconds until the light bar is in the red flashing state.
3. Tap Add Device or the plus icon (+) in the top-right corner on the Home page to go to the device adding page.



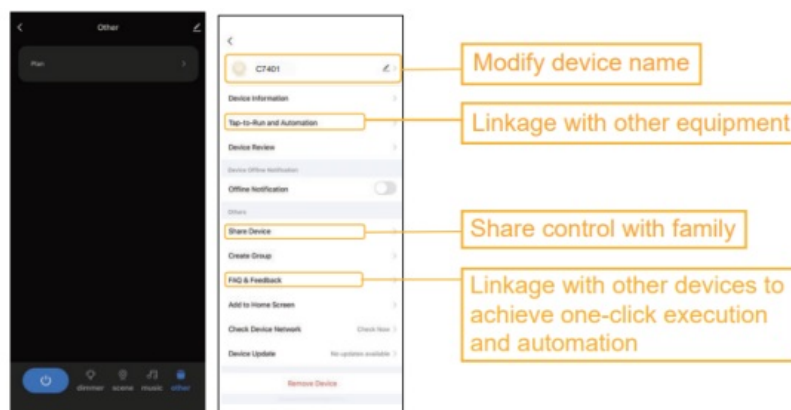
4. Enter the Wi-Fi password and click Next. Make sure the Wi-Fi is 2.4GHz not the 5GHz. Because the Wi-Fi chip is 2.4GHz. Wait about twenty seconds and the device will be added completely.



5. Then the device can be found in home page. Now you can play it with your imagination.



6. Click the edit icon in the upper right corner to show more gameplay.



Notice:

1. Please make sure to perform network pairing in 2.4G wifi or hotspot mode;
2. If the connection is too fast or the network cannot be connected, please reconnect to a strong signal location;

Bluetooth control steps

Note: The device has already joined my app normally (2.4GWIFI+Blue-tooth is required for the first connection), Bluetooth control is generally used for devices with poor WIFI signals or disconnected network connections;

1. Turn off the phone's WiFi;
2. Turn on Bluetooth and open the device on the APP;
Then the device can be controlled through Bluetooth;

Common problems and solutions:

1. Unable to connect to your Wi-Fi network.
 - (1). Please ensure that the correct Wi Fi password is entered during use.
 - (2). Ensure that the connection is 2.4G wifi and that the device currently does not support 5G wifi,
 - (3). Check if there are any issues with your internet connection. If the Wi Fi signal is too weak, please move to a place with a strong signal or reset the wireless router and try again.
2. The installer is not working properly.
 - (1)Then close all applications running in the background and reopen the Smart Life APP.
 - (2) Uninstall and reinstall the Smart Life app and repeat.
3. The smart string light is not responding.
 - (1) Check whether the smart string light is turned off. If yes, turn them on and wait until the smart light strip reconnects to The wireless network works automatically.
 - (2) Check if there is any problem with your internet connection. If necessary, reset the wireless router and try again.

Guarantee:

1. During the warranty period, we provide services including refunds or free replacement for those who use the device for its intended purpose.
2. This warranty does not include:
 - (1) Malfunction or damage caused by improper use, repair or modification.

- (2) Failure or damage due to falling.
- (3) Failure or damage caused by fire, earthquake, flood, lightning and other natural disasters.
- (4) Malfunction or damage when used other than for its intended purpose.
- (5) Failure or damage caused by third-party products.
- (6) Failure or damage to the product caused by human factors.

FCC Warning:

This device complies with part 15 of the FCC Rules. Operation is subject to the following two conditions:

(1) This device may not cause harmful interference (2) this device must accept any interference received, including interference that may cause undesired operation.

Note: This equipment has been tested and found to comply with the limits for a Class B digital device, pursuant to part 15 of the FCC Rules. These limits are designed to provide reasonable protection against harmful interference in a residential installation. This equipment generates, uses and can radiate radio frequency energy and, if not installed and used in accordance with the instructions, may cause harmful interference to radio communications. However, there is no guarantee that interference will not occur in a particular installation. If this equipment does cause harmful interference to radio or television reception, which can be determined by turning the equipment off and on, the user is encouraged to try to correct the interference by one or more of the following.

Measures:


- Reorient or relocate the receiving antenna.
- Increase the separation between the equipment and receiver.
- Connect the equipment into an outlet on a circuit different from that to which the receiver is connected.
- Consult the dealer or an experienced radio/TV technician for help.

Note: The Grantee is not responsible for any changes or modifications not expressly approved by the party responsible for compliance. such modifications could void the user's authority to operate the equipment. The device has been evaluated to meet general RF exposure requirement. To maintain compliance with FCC's RF exposure guidelines, the distance must be at least 20 cm between the radiator and your body, and fully supported by the operating and installation configurations of the transmitter and its

antenna(s).


MADE IN CHINA

Download Free APP:


Smart Life


Download on the App Store

GET IT ON Google Play



<https://smartapp.tuya.com/smartlife>

Documents / Resources

	<p>Jindian C7401-A RGBCW Smart Floor Lamp [pdf] Instruction Manual</p> <p>C7401-A RGBCW Smart Floor Lamp, C7401-A, RGBCW Smart Floor Lamp, Smart Floor Lamp, Floor Lamp</p>
---	---

References

- [User Manual](#)

📁 Jindian

🔖 C7401-A, C7401-A RGBCW Smart Floor Lamp, Floor Lamp, Jindian, RGBCW Smart Floor Lamp, Smart Floor Lamp

Leave a comment

Your email address will not be published. Required fields are marked *

Comment *

Name

Email

Website

☐ Save my name, email, and website in this browser for the next time I comment.

Post Comment

Search:

e.g. whirlpool wrf535swhz

Search

[Manuals+](#) | [Upload](#) | [Deep Search](#) | [Privacy Policy](#) | [@manuals.plus](#) | [YouTube](#)

This website is an independent publication and is neither affiliated with nor endorsed by any of the trademark owners. The "Bluetooth®" word mark and logos are registered trademarks owned by Bluetooth SIG, Inc. The "Wi-Fi®" word mark and logos are registered trademarks owned by the Wi-Fi Alliance. Any use of these marks on this website does not imply any affiliation with or endorsement.