



# JIECANG JCHR35W5C1 Remote Controller User Manual

[Home](#) » [JIECANG](#) » JIECANG JCHR35W5C1 Remote Controller User Manual 

**JIECANG JCHR35W5C1 Remote Controller**

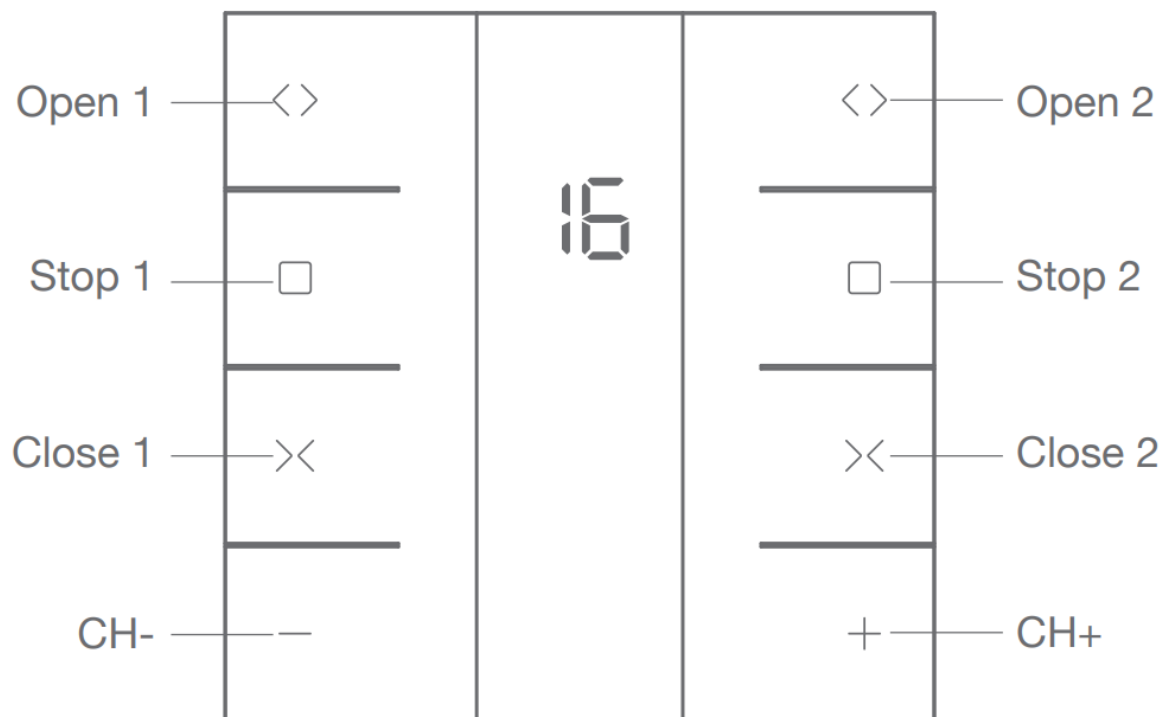


## Contents

- [1 Product Info](#)
- [2 Models & Parameters \(more info please refer to the nameplate\)](#)
- [3 Caution!](#)
- [4 Instructions](#)
- [5 Documents / Resources](#)
- [6 Related Posts](#)

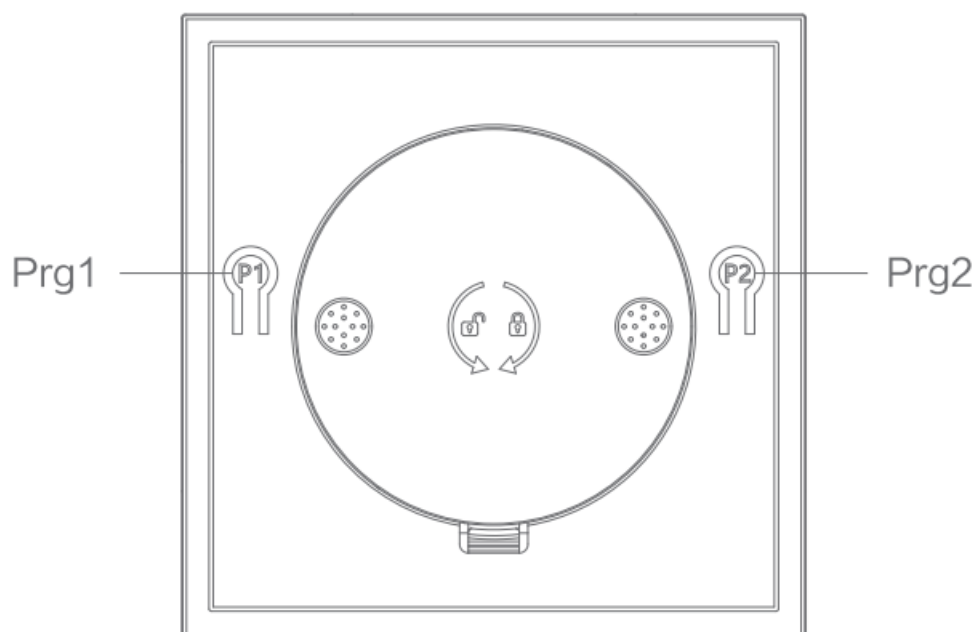
## Product Info

### a. Front



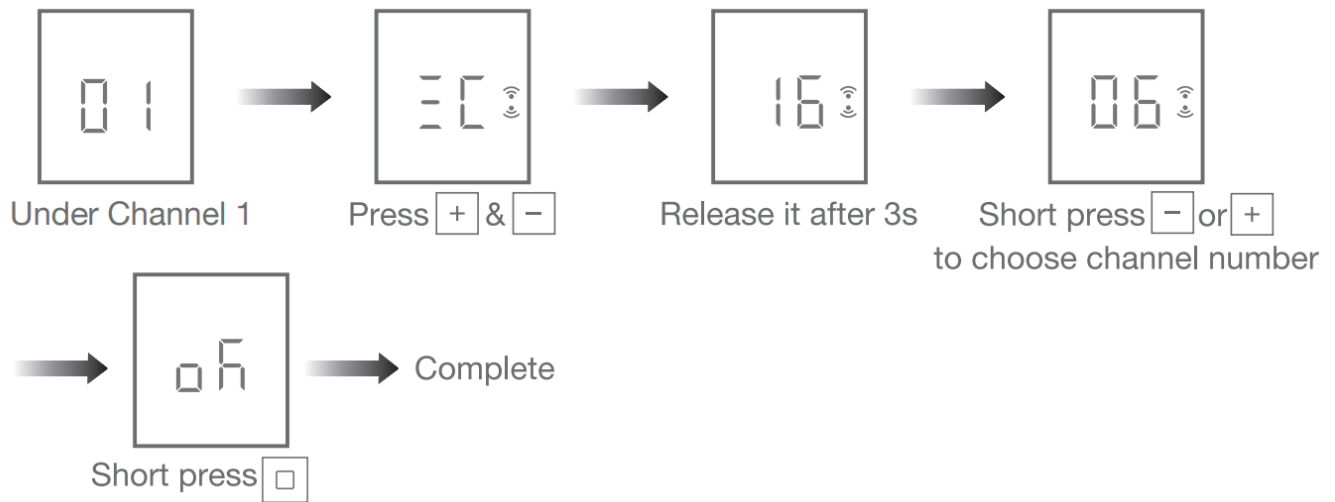
**JCHR35W5C1**  
16-channel dual control  
LCD remote controller

**b. Back**



**JCHR35W5C1**

## b. Number of Channels Setting



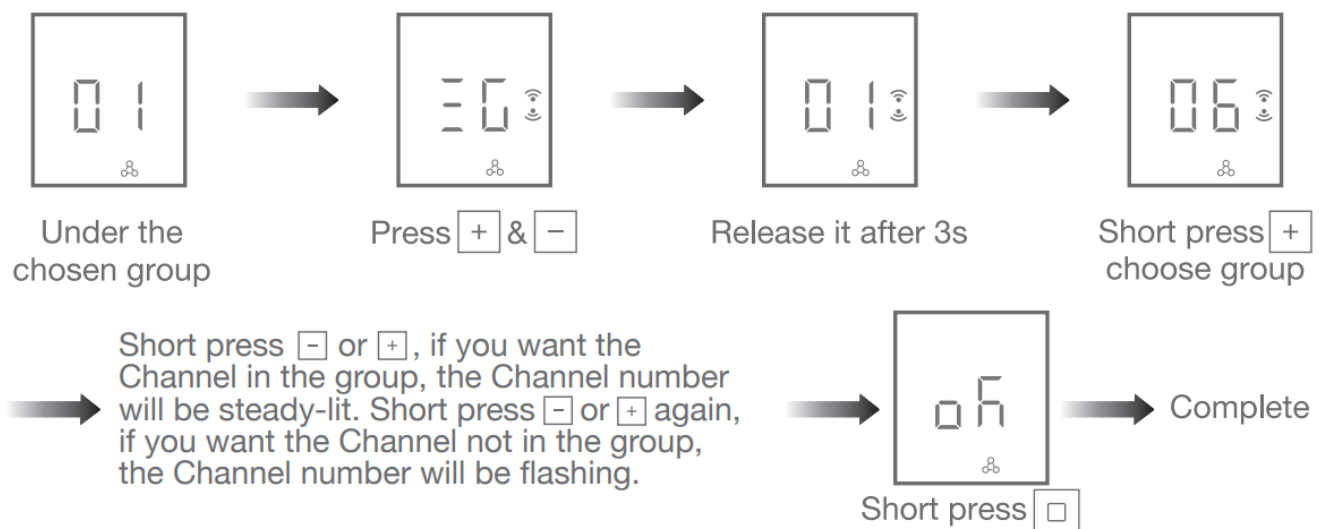
**Note:** Max & Min number is 16 & 1 when it's set under channel 1-16.

## c. Number of Groups Setting

Product Info

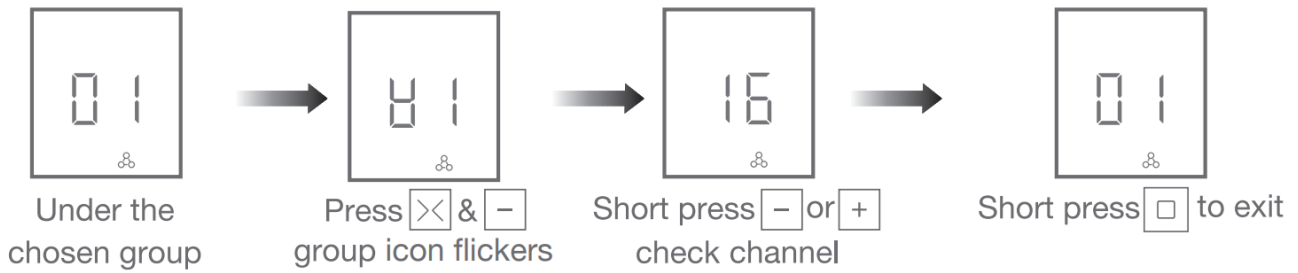
Note: Max & Min number is 6 & 0 when it's set under channel 0.

## d. Channel in Group Setting



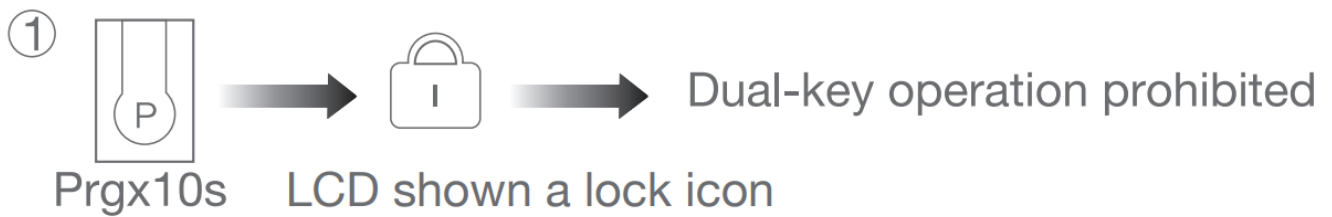
**Note:** Channel in groups setting is under GROUP 1-6.

## e. Check the Channels in Groups



**Note:** LCD will show “EC” if there is no detailed channel.

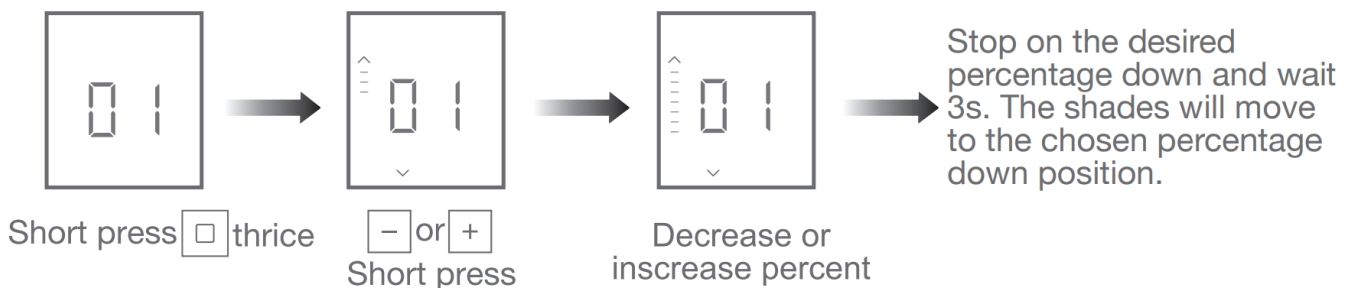
#### f. Prohibit Dual-key Operation



② Repeat the above, dual-key operation activated

**Note:** When dual-key operation prohibited, these programming setting functions are not allowed, such as limits setting.

#### g. Position Percent Setting



**Note:** All the shades under same group will run to same position after percent setting.

#### h. Hot Key to the Fav. Position





**Note:** The Fav. position setting only can be done after limits set.

i. For other operations, please refer to the motor operation instruction

## Models & Parameters (more info please refer to the nameplate)

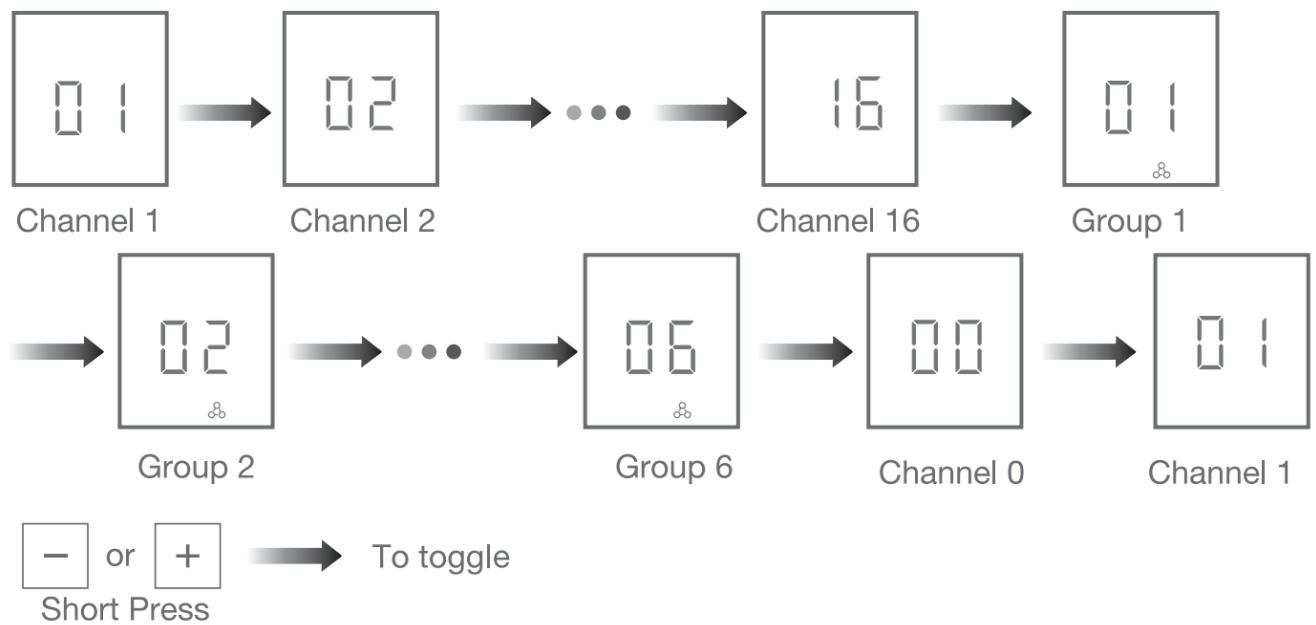
Electrical Specification	Standard
Battery Type	CR2430'31r2
Working Temperature	-10°C-50°C
Radio Frequency	433.92M ± 100KHz
<b>Transmit Distance</b>	>=30m indoor

### Caution!

1.  The transmitter should not be exposed to moisture or impact, so as not to affect its life
2. During use, when the remote control distance is significantly shorter or less sensitive, please check whether the battery needs to be replaced.
3. When the battery voltage is too low, the LED screen will show a low voltage prompt, indicating to replace the battery. 
4. Please properly dispose of used batteries according to the local garbage classification and recycling policy.

## Instructions

### a. Channels & Groups Toggling



**Note:** Channel 0 is the group control for all the channels.

## Documents / Resources

	<p><a href="#">JIECANG JCHR35W5C1 Remote Controller</a> [pdf] User Manual          JCHR35W5C1 Remote Controller, JCHR35W5C1, Remote Controller, Controller</p>
--	--