



# JIECANG JCHR35W5A8 Single Channel Remote Controller User Manual

[Home](#) » [JIECANG](#) » JIECANG JCHR35W5A8 Single Channel Remote Controller User Manual 



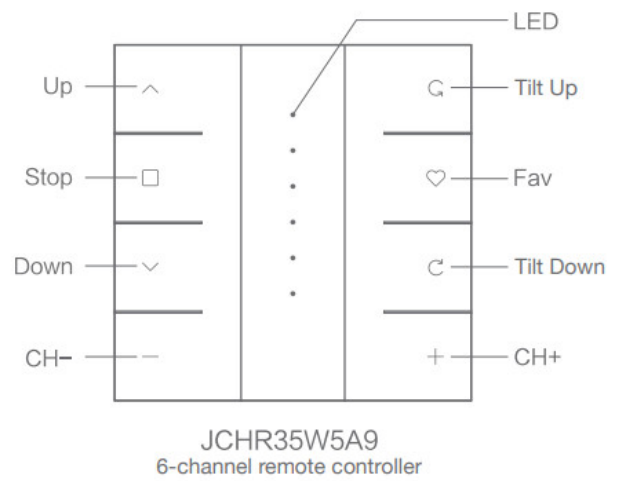
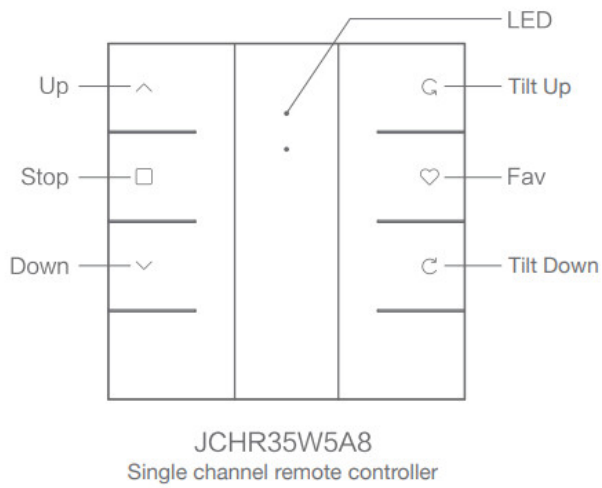
JCHR35W5A8/A9  
Remote Controller  
User Manual

## Contents

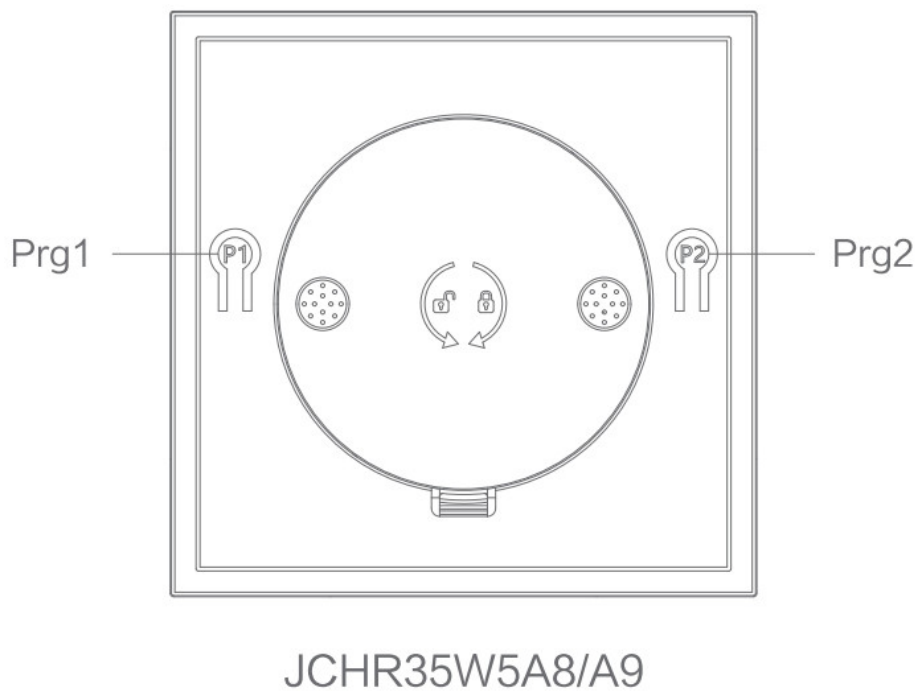
- [1 Product Info](#)
- [2 Models & Parameters](#)
- [3 Caution!](#)
- [4 Instructions](#)
- [5 FCC Compliance](#)
- [6 Documents / Resources](#)
- [7 Related Posts](#)

## Product Info

### a. Front



## b. Back



## Models & Parameters

(more info please refer to the nameplate)

Electrical Specification	Standard
Battery Type	CR2430*3V*2
Working Temperature	-10°C-50°C
Radio Frequency	433.92M ± 100KHz
Transmit Distance	>=30m indoor

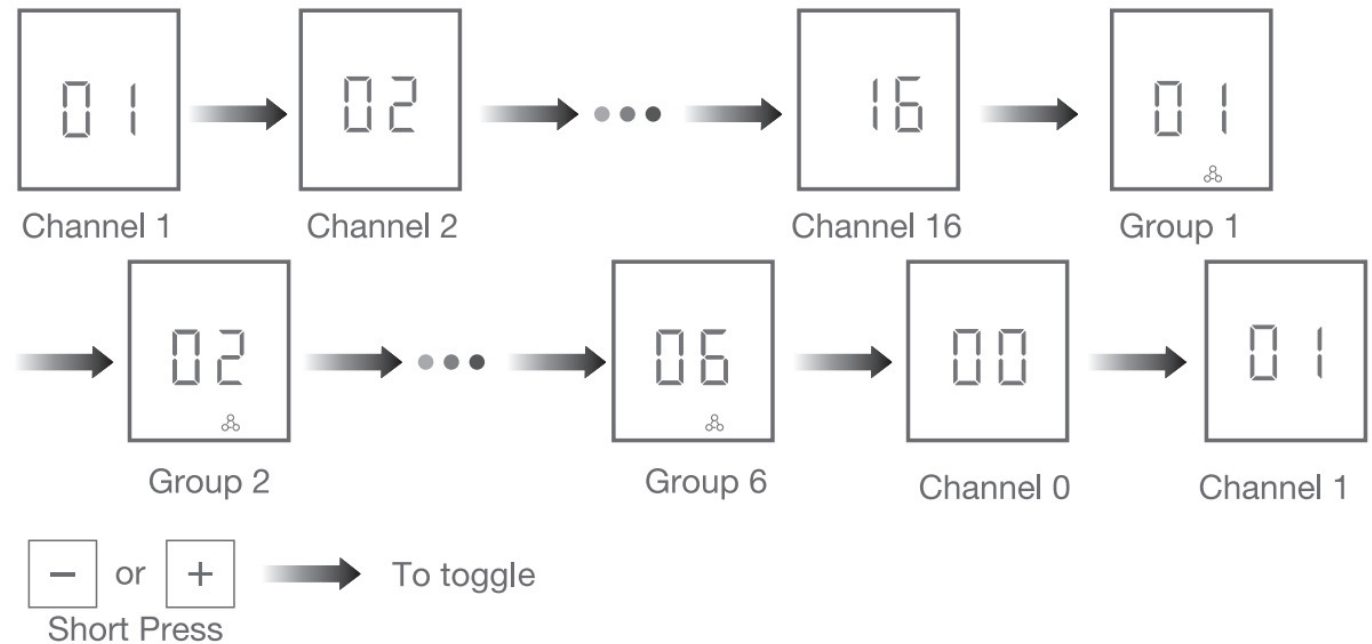


1. The transmitter should not be exposed to moisture or impact, so as not to affect its life

2. During use, when the remote control distance is significantly shorter or less sensitive, please check whether the battery needs to be replaced.
3. When the battery voltage is too low, JCHR35W5A8, JCHR35W5A9 orange LED flickers when you press button
4. Please properly dispose of used batteries according to the local garbage classification and recycling policy.

## Instructions

### a. Channels & Groups Toggling



**Note:** Channel 0 is the group control for all the channels.

### b. Number of Channels Setting



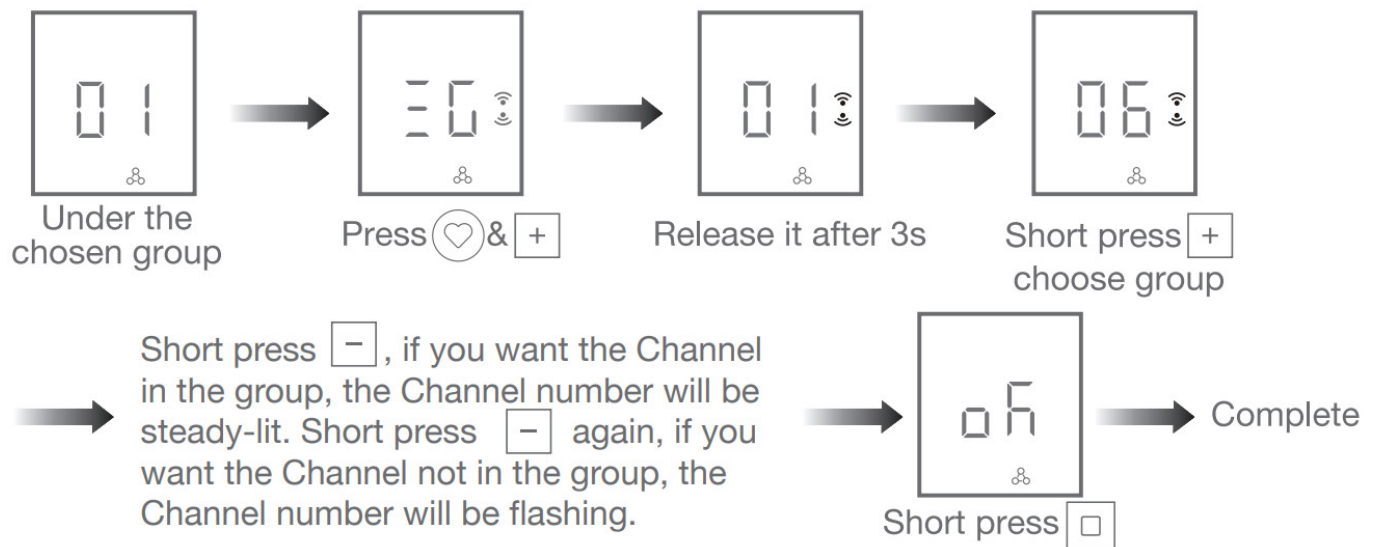
**Note:** Max & Min number is 16 & 1 when it's set under channel 1-16.

### c. Number of Groups Setting



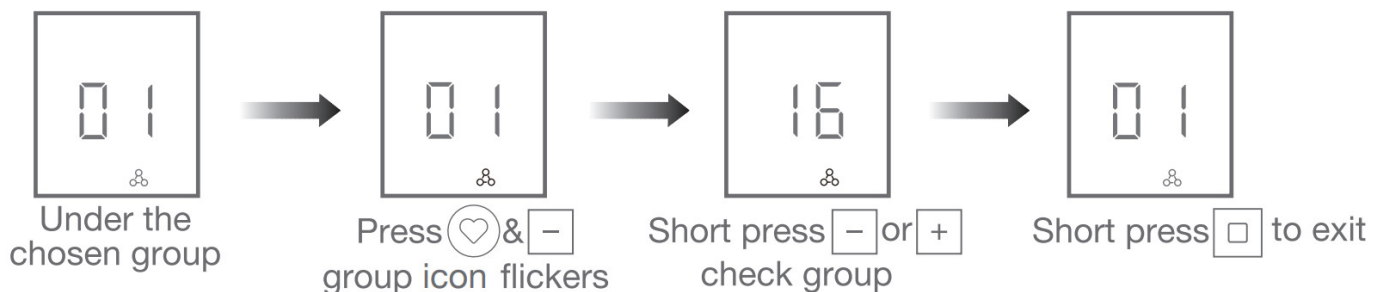
**Note:** Max & Min number is 6 & 1 when it's set under channel 0.

#### d. Channel in Group Setting



**Note:** Channel in groups setting is under GROUP 1-6.

#### e. Check the Channels in Groups



**Note:** LCD will show "EC" if there is no detailed channel.

#### f. Prohibit Dual-key Operation

1. Press Prg for 10s, remote controller LED will flickers, dual-key operation prohibited.
2. Repeat the above, dual-key operation activated

**Note:** When dual-key operation prohibited, these programming setting functions are not allowed, such as limits setting.

**g. For other operations, please refer to the motor operation instruction**

**FCC Compliance**

This device complies with part 15 of the FCC Rules.  
Operation is subject to the following two conditions:

- 1. This device may not cause harmful interference, and
- 2. this device must accept any interference received, including interference that may cause undesired operation.

Any Changes or modifications not expressly approved by the party responsible for compliance could void the user’s authority to operate the equipment.  
This equipment has been tested and found to comply with the limits for a Class B digital device, pursuant to Part 15 of the FCC Rules. These limits are designed to provide reasonable protection against harmful interference in a residential installation. This equipment generates, uses and can radiate radio frequency energy and, if not installed and used in accordance with the instructions, may cause harmful interference to radio communications. However, there is no guarantee that interference will not occur in a particular installation. If this equipment does cause harmful interference to radio or television reception, which can be determined by turning the equipment off and on, the user is encouraged to try to correct the interference by one or more of the following measures:

- Reorient or relocate the receiving antenna.
- Increase the separation between the equipment and receiver.
- Connect the equipment into an outlet on a circuit different from that to which the receiver is connected.
- Consult the dealer or an experienced radio/TV technician for help.

Please take attention that changes or modification not expressly approved by the party responsible for compliance could void the user’s authority to operate the equipment.

**Documents / Resources**

	<p><b><a href="#">JIECANG JCHR35W5A8 Single Channel Remote Controller</a></b> [pdf] User Manual JCHR35W5A, 2ANKDJCHR35W5A, JCHR35W5A8 Single Channel Remote Controller, Single Channel Remote Controller, Channel Remote Controller, Remote Controller</p>
---	--