



JIECANG JCHR35W1B-2B 6-Channel LCD Remote Controller with Timer User Manual

[Home](#) » [JIECANG](#) » JIECANG JCHR35W1B-2B 6-Channel LCD Remote Controller with Timer User Manual 

Contents

- [1 JIECANG JCHR35W1B-2B 6-Channel LCD Remote Controller with Timer](#)
- [2 Product Information](#)
- [3 Product Usage Instructions](#)
- [4 Product Info](#)
- [5 Instructions](#)
- [6 Documents / Resources](#)



JIECANG JCHR35W1B-2B 6-Channel LCD Remote Controller with Timer



Product Information

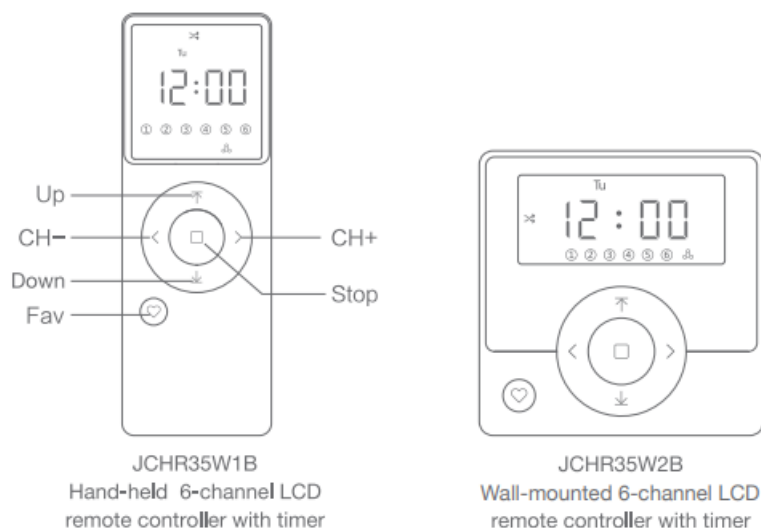
- **Product Name:** Wall-mounted 6-channel LCD Prg T Prg
- **Number of Channels:** 6
- **Type:** LCD display
- **Mounting Type:** Wall-mounted

Product Usage Instructions

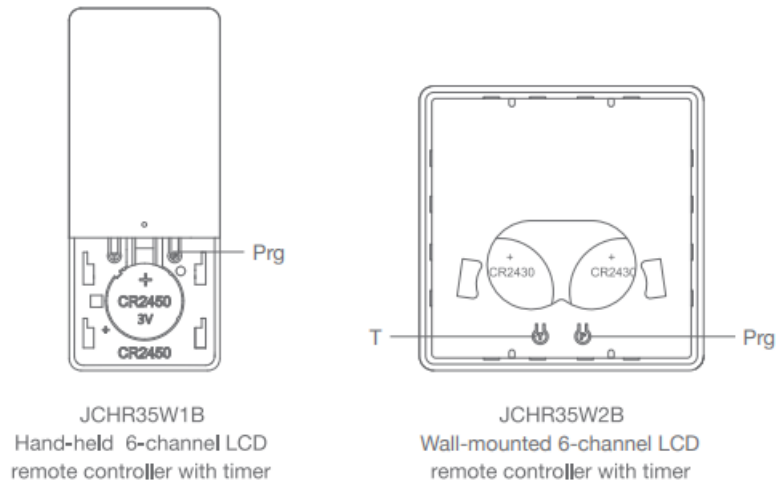
1. **Caution:** Do not expose the transmitter to moisture or impact. Check the battery periodically and replace it if the remote control distance is significantly shorter or less sensitive. Replace the battery when the LED screen shows a low voltage prompt. Dispose of used batteries properly based on local garbage classification and recycling policy.
2. **Channels & Groups Toggling:** Use short press to toggle between channels and groups. To add a channel to a group, press the button until the channel number is steady-lit. To remove a channel from a group, press the button again until the channel number is flashing.
3. **Number of Groups Setting:** Use this feature to set the number of groups for the channels.
4. **Channel in Group Setting:** Use this feature to add or remove a channel from a group.
5. **Check the Channels in Groups:** Channel 0 displays all channels that are steady-lit.
6. **Prohibit Dual-key Operation:** Use this feature to prevent accidental dual-key operations.
7. **Local Time Setting:** Set up the local time using the hour and minute buttons.
8. **Position Percent Setting:** Use this feature to set the position percentage for the shades.
9. **Modes Toggling:** Use this feature to toggle between different modes in a cycle.
10. **Timer Control:** Use this feature to program the timer. Enter program mode and set up the timer based on the desired channel and time. Up to 20 programs can be set. Steady-lit channel numbers will be included in the timer program, while flashing channel numbers will not be included.
11. **Other Operations:** Refer to the motor operation instruction for other operations.

Product Info

a. Front



b. Back



Models & Parameters (more info please refer to the nameplate)

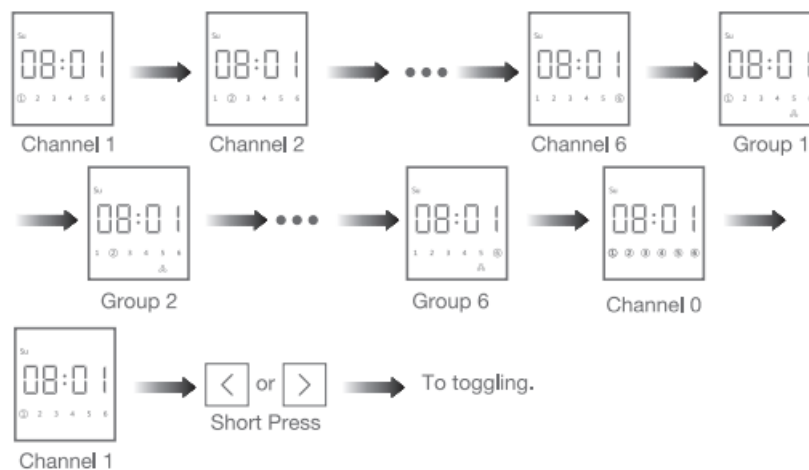
Electrical Specification	Standard	
Battery Type	Hand-held:CR2450*3V*1	Wall-mounted: CR2430*3V*2
Working Temperature	-10℃-50℃	
Radio Frequency	433.92M±100KHz	
Transmit Distance	≥30m indoor	

Caution

1. The transmitter should not be exposed to moisture or impact, so as not to affect its life
2. During use, when the remote control distance is significantly shorter or less sensitive, please check whether the battery needs to be replaced.
3. When the battery voltage is too low, the LED screen will show a low voltage prompt, prompting to replace the battery.
4. Please properly dispose of used batteries according to the local garbage classification and recycling policy.

Instructions

Channels & Groups Toggling



Note: Channel 0 is where all channels are shown as steady-lit.

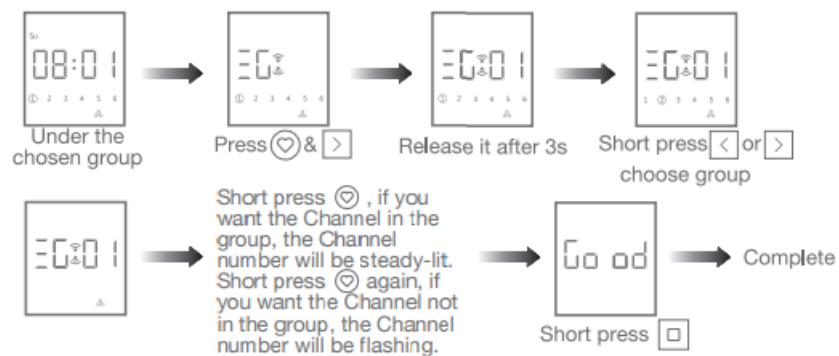
Number of Channels Setting



Number of Groups Setting

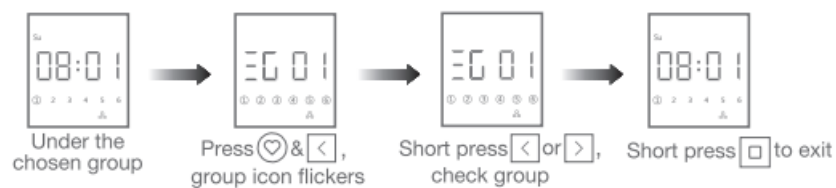


Channel in Group Setting



Note: Max&Min number is 6&1 when it's set under channel 0.

Check the Channels in Groups

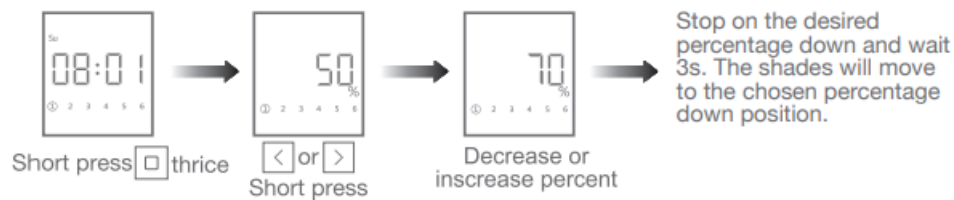


Prohibit Dual-key Operation Repeat the above, dual-key operation activated



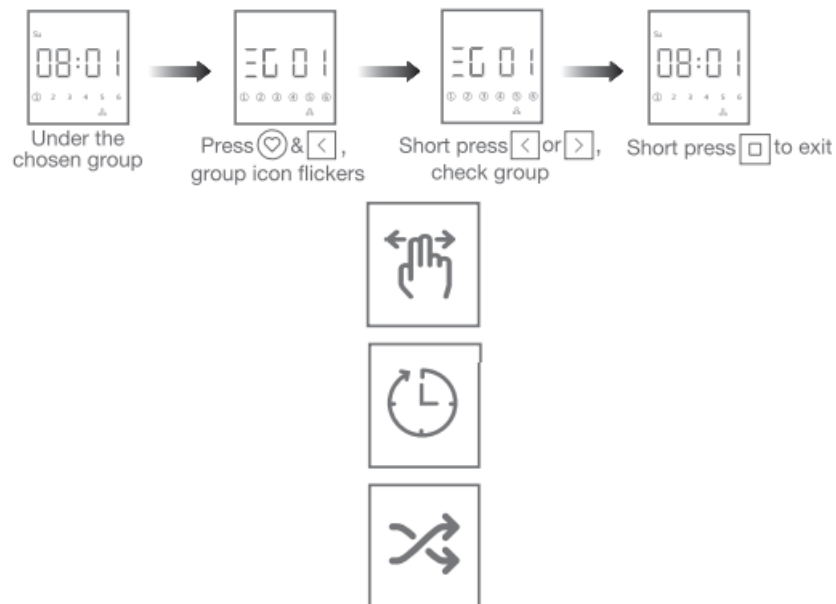
Note: When dual-key operation is prohibited, these programming setting functions are not allowed.

Position Percent Setting



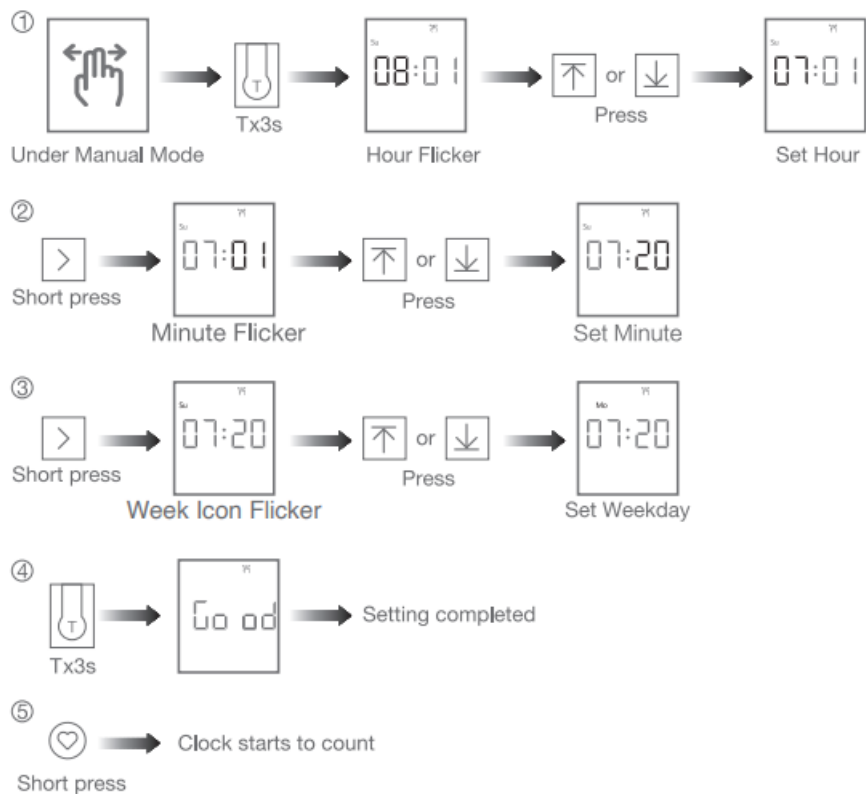
Note: All the shades under same group will run to same position after percent setting.

Modes Toggling



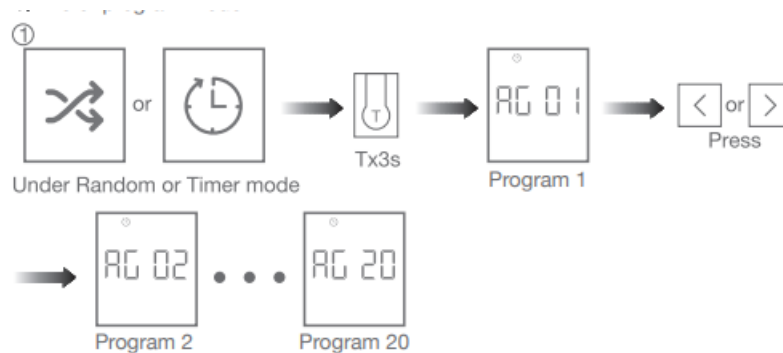
- **Manual:** Without timer function
- **Timer:** With timer function, maximum can set 20 sets of data
- **Random:** With random timer function, +15 minutes on basis timer

Local Time Setting



Timer Control

1. Enter program mode



Note:

1. Press Up&Stop, LCD shown CLO0, means current data cleared
2. Press Down&Stop, LCD shown CP01, means first data set copied to current set

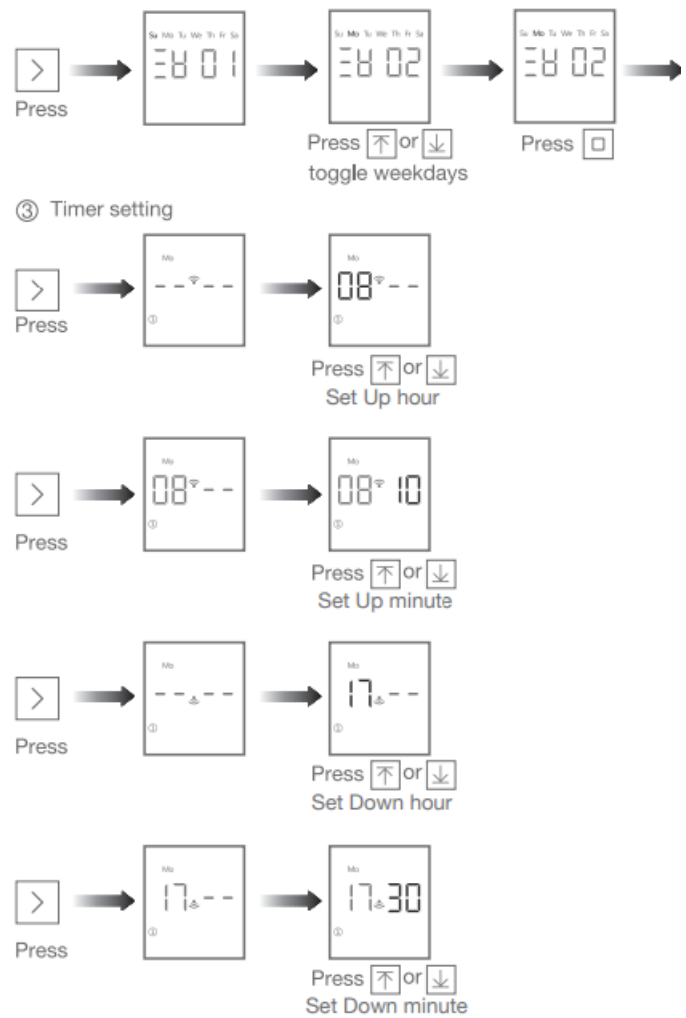
Timer setting

- Channel setting



Steady-lit channel numbers will be included in the timer program; flashing channel numbers will not be included in

the timer program.



For other operations, please refer to the motor operation instruction

Documents / Resources

	JIECANG JCHR35W1B-2B 6-Channel LCD Remote Controller with Timer [pdf] User Manual W1B, 2B, JCHR35W1B-2B 6-Channel LCD Remote Controller with Timer, JCHR35W1B-2B, 6-Channel LCD Remote Controller with Timer, 6-Channel, LCD Remote Controller with Timer, LCD Remote Controller, Controller with Timer
--	----------------------------------------------------------------------------------------------------------------------------------------------------------------------------------------------------------------------------------------------------------------------------------------------------------------------------