

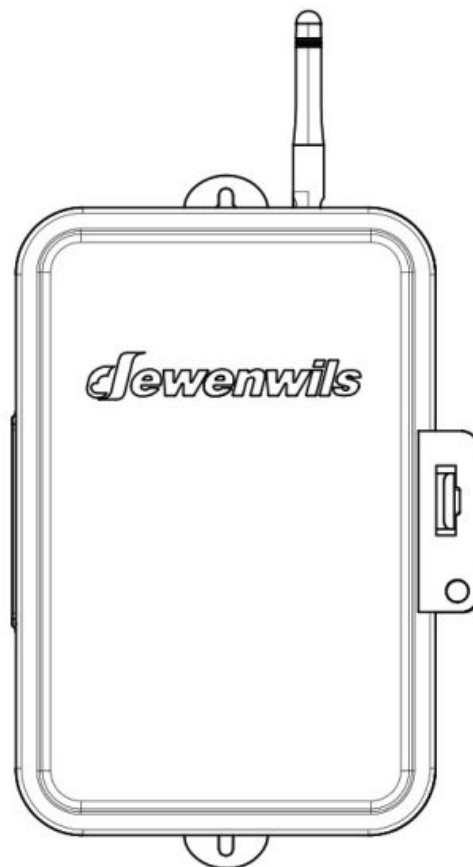


Jewenwils

Outdoor Wi-Fi Pool Timer

SKU:HOWT01E

[Instruction Manual]



V50517

Please pay attention to the warning signs Read the instructions with caution before operating and keep it properly.

Contents [[hide](#)]

- 1 [HOWT01E Outdoor Wi-Fi Pool Timer](#)
- 2 [Product Illustration](#)
- 3 [Specifications](#)
- 4 [Installation Instructions](#)
- 5 [Important Safety Information](#)
- 6 [POOL TIMER TYPICAL APPLICATION WIRING DIAGRAMS](#)
- 7 [Software Installation Guide](#)
- 8 [Log in or Sign up](#)
- 9 [Work with Amazon Alexa](#)
- 10 [Work with Google Home](#)
- 11 [Other functions](#)
- 12 [FCC STATEMENT](#)
- 13 [One Year Limited Warranty](#)
- 14 [Documents / Resources](#)
 - 14.1 [References](#)

HOWT01E Outdoor Wi-Fi Pool Timer

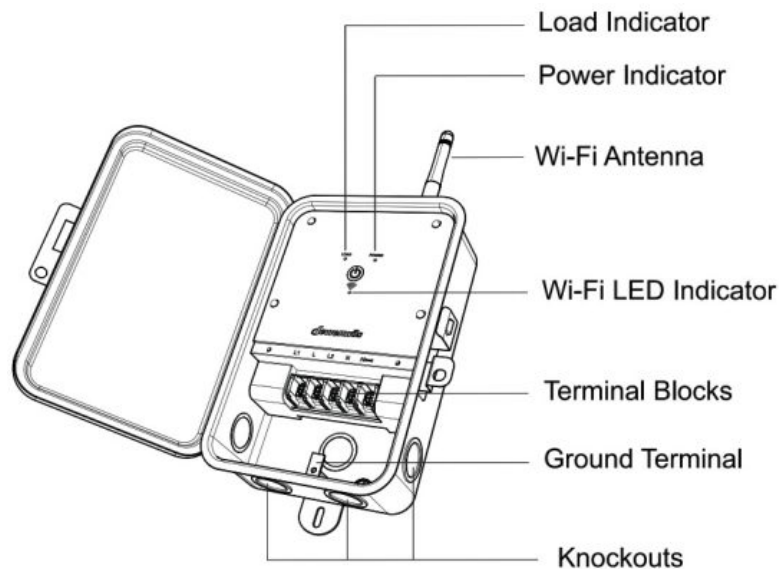


WARNING: This Smart Box should be installed by a licensed electrician. Turn power off at main panel before servicing this switch or the equipment it controls.

IMPORTANT: For outdoor use. Rain-tight or wet location conduit, hubs, tubing, and cable fittings that comply with requirements of UL 514B must be used for installation.

READ ALL INSTRUCTIONS before using the Pool Timer.

Product Illustration



Specifications

PTW01 PTW03

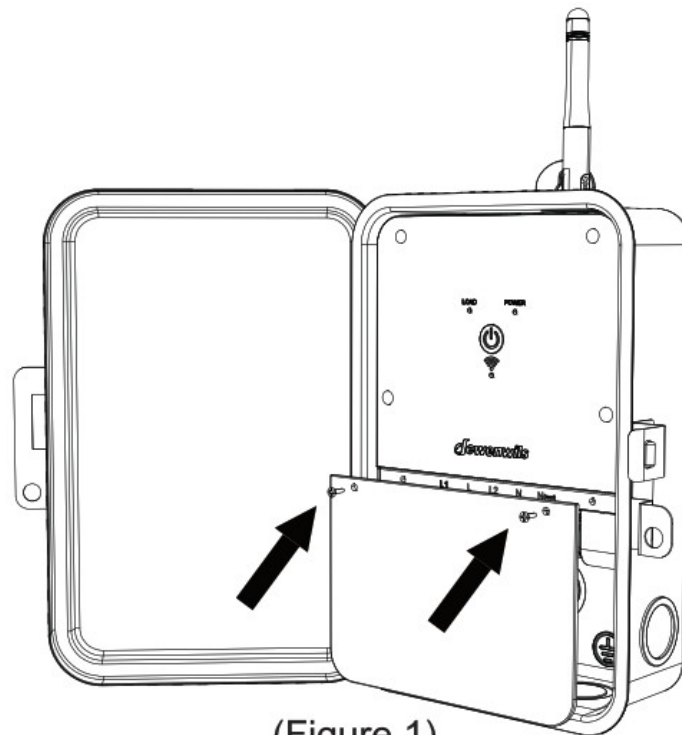
Input: 120VAC 60Hz

Output: 40A Resistive, 120VAC 2HP, 120VAC

Installation Instructions

1. Read Important Safety Information below before beginning installation.
2. Open outer cover by pressing the clip.
3. Remove the interior protection cover by removing the two screws holding the cover in place (Figure 1).
4. Select the knockouts to be used. Remove the inner 1/2" knockout by inserting a screwdriver in the slot and carefully punching the knockout loose. Remove slug. If 3/4" knockout is required, also remove the outer ring with pliers after removing the 1/2" knockout. Smooth any rough edges with a file or sandpaper, if necessary.
5. Place and mark the Pool Timer in the desired mounting position. Install two screws at the mark and partially drive into place. Attach Smart Box by placing screws over keyholes, then tighten screws.
6. Wire in accordance with national and local codes (see wiring diagrams below). Use copper wire AWG 8-18 suitable for 90°C (194°F). Tighten all connections to minimum 10.6 lb. in. torque.
7. **Grounding:** Connect all grounding wires to the grounding lug at the bottom of the enclosure.
8. Replace interior protection cover.

9. Close outer cover. Pool Timer now is ready to be connected to the WiFi router via the app.



(Figure 1)

Important Safety Information



WARNING: Risk of Fire or Electric Shock. Read instructions thoroughly before installation and preserve for future reference.

Disconnect power at circuit breaker and test if power is off before installing (or servicing) the Pool Timer (more than one circuit breaker or disconnect switch may be required to fully disconnect power).

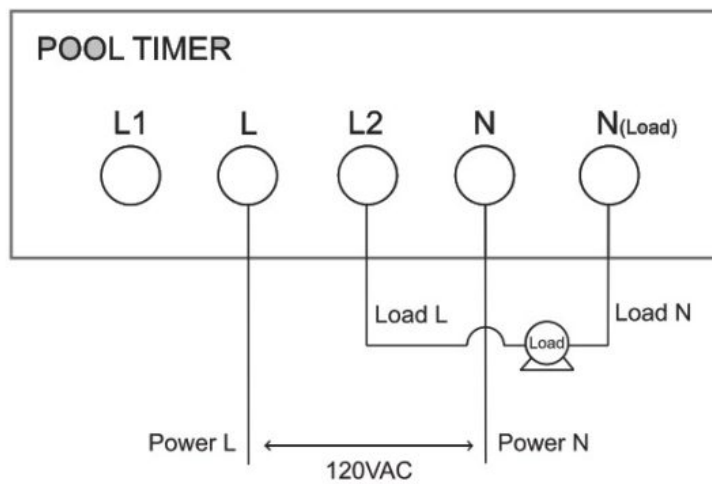
Wiring must be in accordance with all national and local electrical code requirements.

Inspect all terminals and wires with voltage meter before touching.

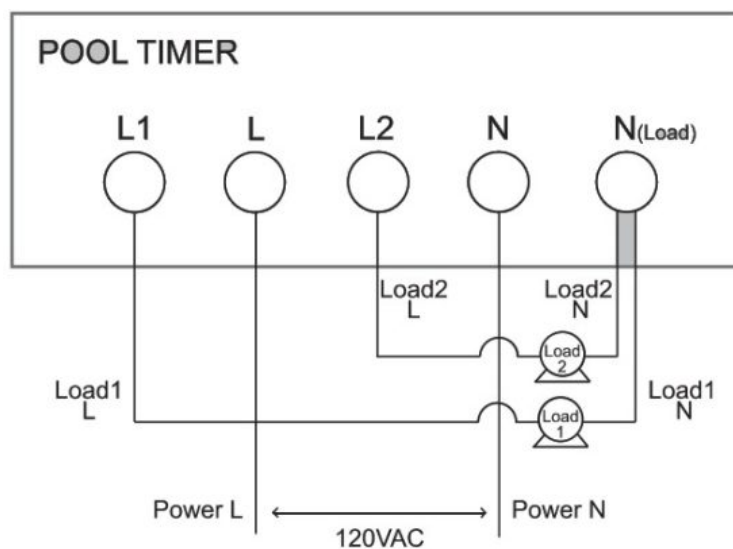
The maximum total load to be controlled must not exceed Pool Timer capacity. The Pool Timer enclosure does not provide grounding between conduit connectors. When metallic conduit is used, you must also install grounding type bushings and in accordance with National Electrical Code (NEC) requirements.

POOL TIMER TYPICAL APPLICATION WIRING DIAGRAMS

Note: Pool Timer is only capable of being configured for 120VAC.



120VAC Application Controlling One 120VAC Load 120VAC Application Controlling Two 120VAC Loads



IMPORTANT: Please refer to INSTALLATION INSTRUCTION SHEET before proceeding with Wi-Fi router connection. Smart Box must be installed before connecting to Wi-Fi router.

Software Installation Guide



dewenwils

ANDROID APP ON
Google play

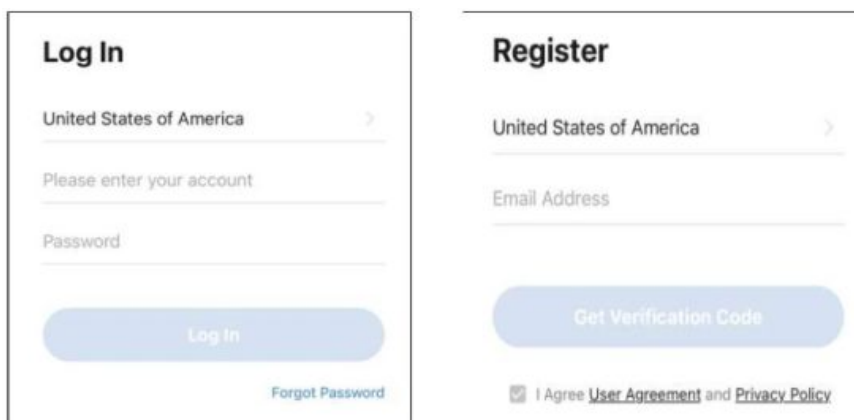
Available on the
App Store

<https://a.smart321.com/dewenwilssmartiot>

Download the “Smart Life” App: Scan QR Code or search “dewenwils” in Google Play or the App Store to download and install the app.

Note: All pictures shown are for illustration purpose only, the APP will be updated continuously, please refer to the latest APP interface to operate.

Log in or Sign up



The image displays two side-by-side screenshots of the 'dewenwils' app interface. The left screenshot is the 'Log In' screen, featuring a dropdown menu for 'United States of America', a text input field for 'Please enter your account', another for 'Password', a blue 'Log In' button, and a 'Forgot Password' link. The right screenshot is the 'Register' screen, featuring a dropdown menu for 'United States of America', a text input field for 'Email Address', a blue 'Get Verification Code' button, and a checkbox for 'I Agree' followed by links to 'User Agreement' and 'Privacy Policy'.

Note: Each device can only be connected to one account. If anyone else needs to control it, please share your device via the app.

Add device

1. Launch the “dewenwils” app and connect your Pool Timer to your network.

Note: The Pool Timer only support 2.4GHz network.

LED Status	Function
Power Indicator is ON	Pool Timer is powered on
Power Indicator is OFF	Pool Timer is powered off
Load Indicator is ON	Load is powered on
Load Indicator is OFF	Load is powered off
Blue WiFi LED blinks rapidly	Resetting/Enter into network configuration
Blue WiFi LED blinks slowly until off	Configuration is success

For Optimal Use:

- 1) If the Blue Wi-Fi LED indicator on Smart Box doesn't flash at the first connection,

please press and hold the power button for about 5-10 seconds to see if it starts flashing (2 times per second);

2) If the Smart Box can't be connected to WiFi, please long press power button for 5-10 seconds to reset;

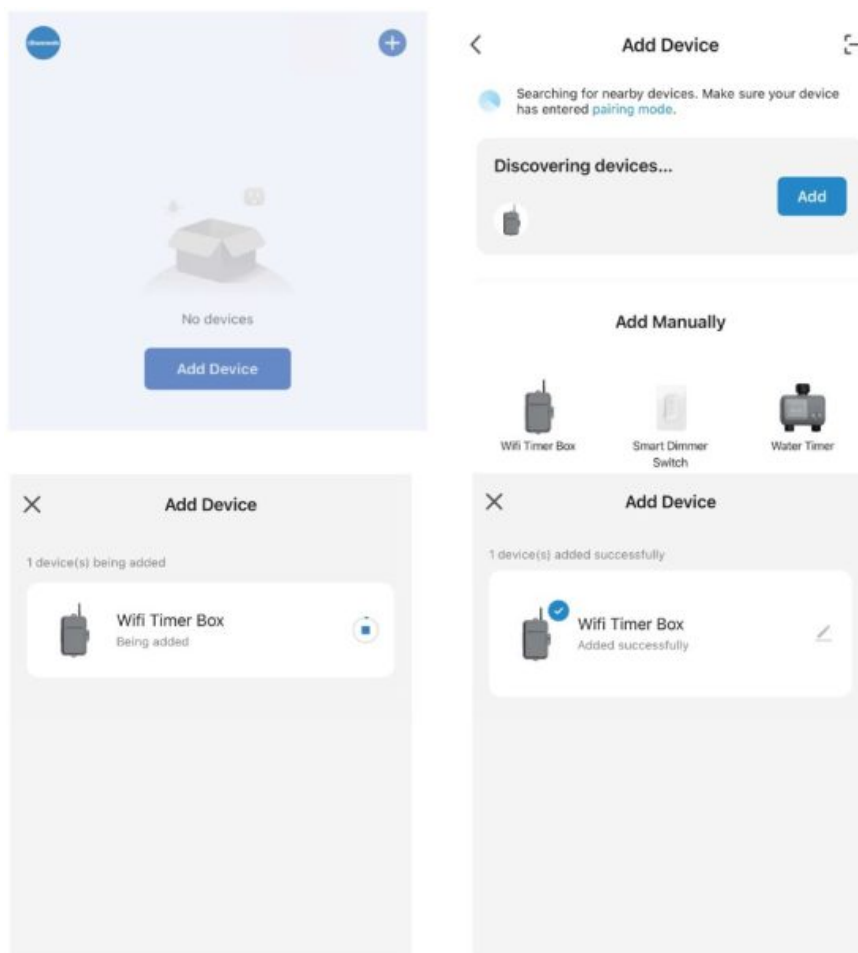
3) The Smart Box only work with 2.4GHz network. If your router broadcasts both 2.4 GHz and 5GHz, please select the 2.4GHz network with the app. If connection still failed, we recommend you call your ISP and had them completely shut off the 5GHz network on the router. You are free to change the network to 5GHz again after connecting.

4) Please try to make the Smart Box and router as close as possible.

1. Add the Pool Timer

Auto Add Mode (Bluetooth Mode)

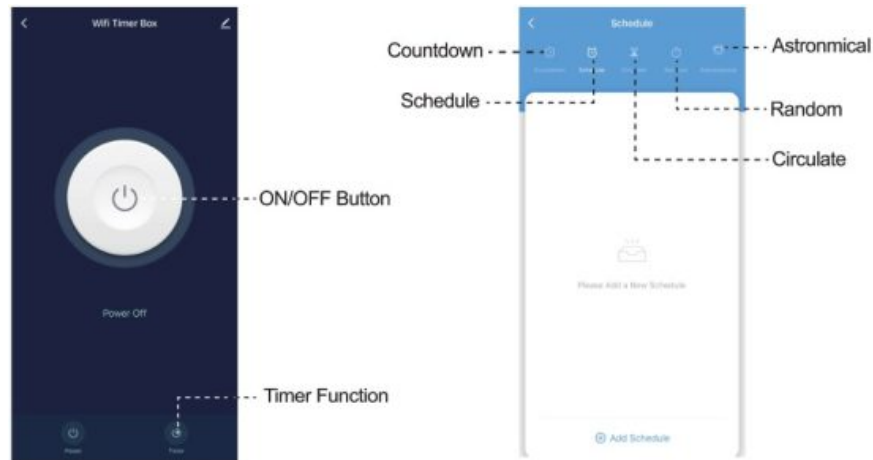
- Turn on the smartphone's Bluetooth.
- Open the “dewenwils” APP and click the “+” at the top right list, it will find the Pool Timer automatically.
- If the Pool Timer is not automatically discovered, select Auto Scan to automatically search for the Pool Timer.
- Follow the steps in the APP to complete the pairing.



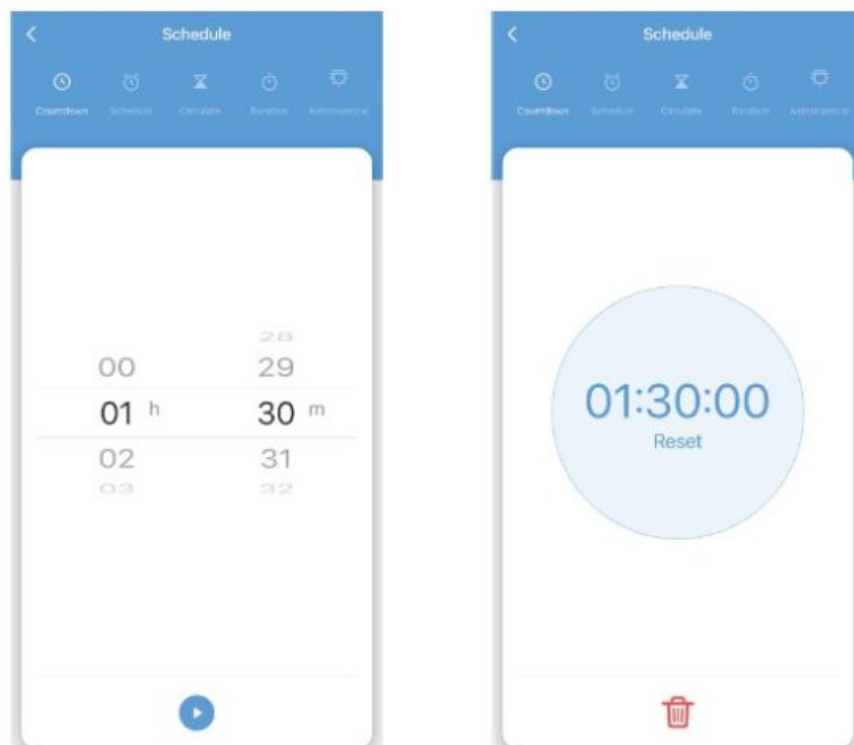
Note: Please attention “location information” on mobile needs to be turned on.

2. Timer Function

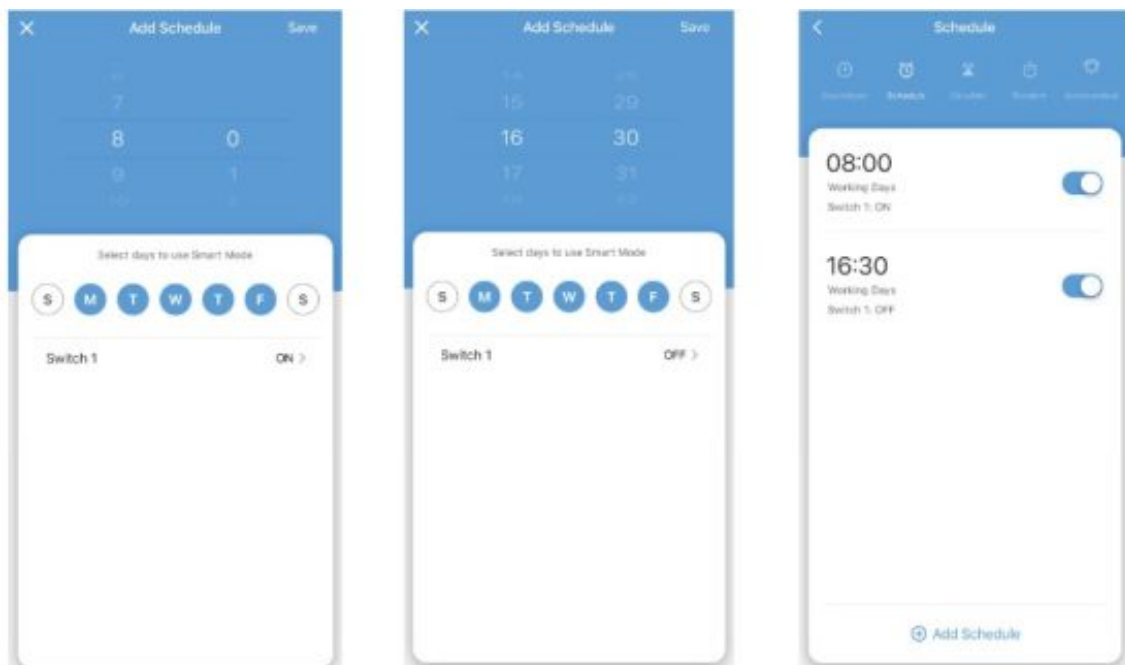
Select the “Countdown”, “Schedule”, “Circulate”, “Random” or “Astronomical” to meet your needs.



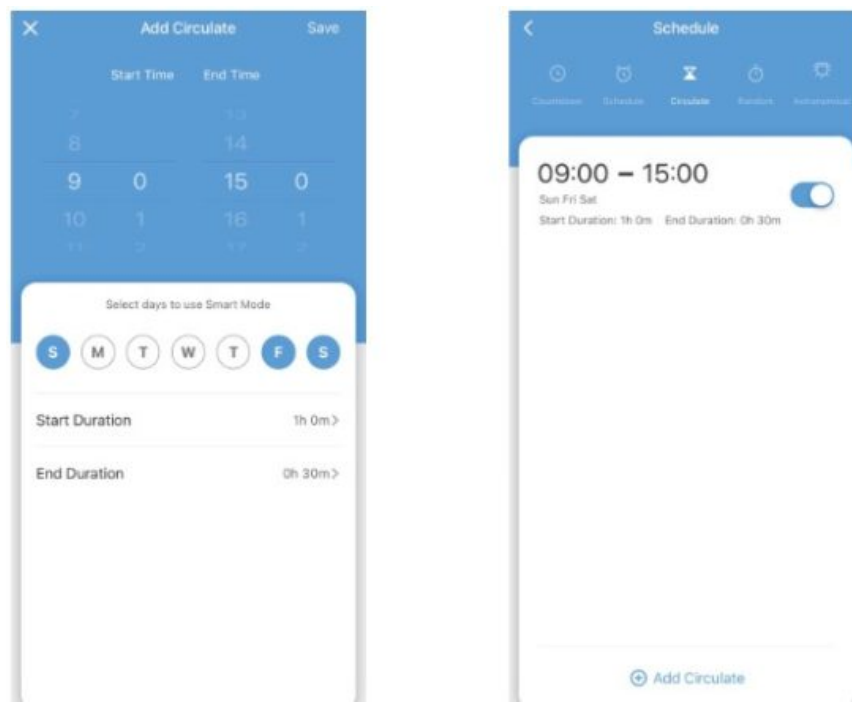
1. **Countdown:** Tap “Countdown” to set the hours and minutes, and then tap the “▶” button. The Smart Box will maintain the current state (on or off) until the end of the countdown. It will exit countdown mode automatically if you turn on/off manually



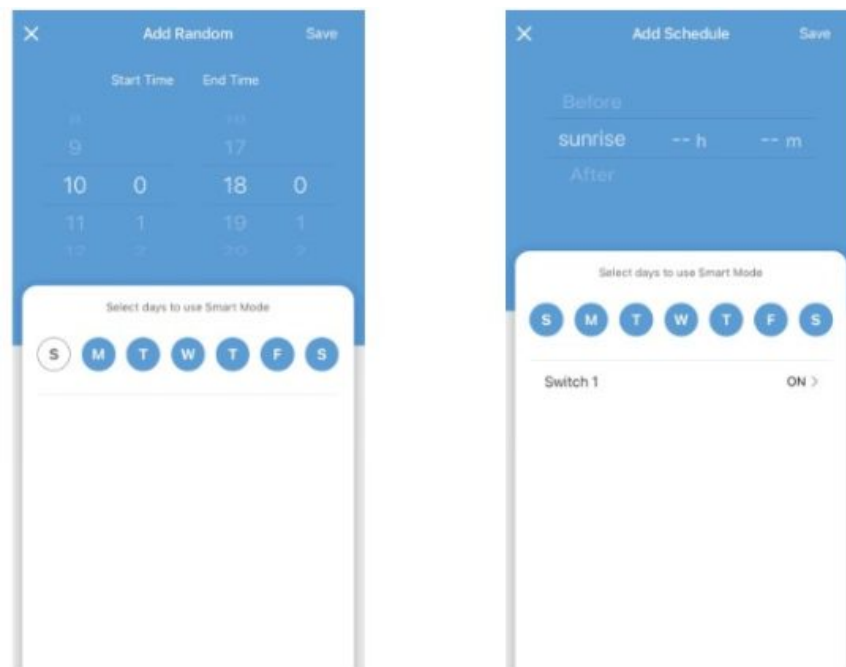
2. **Schedule:** You can set the Start/End time in a 7-day period with a 1 minute interval according to your needs. Every program you set repeats weekly.



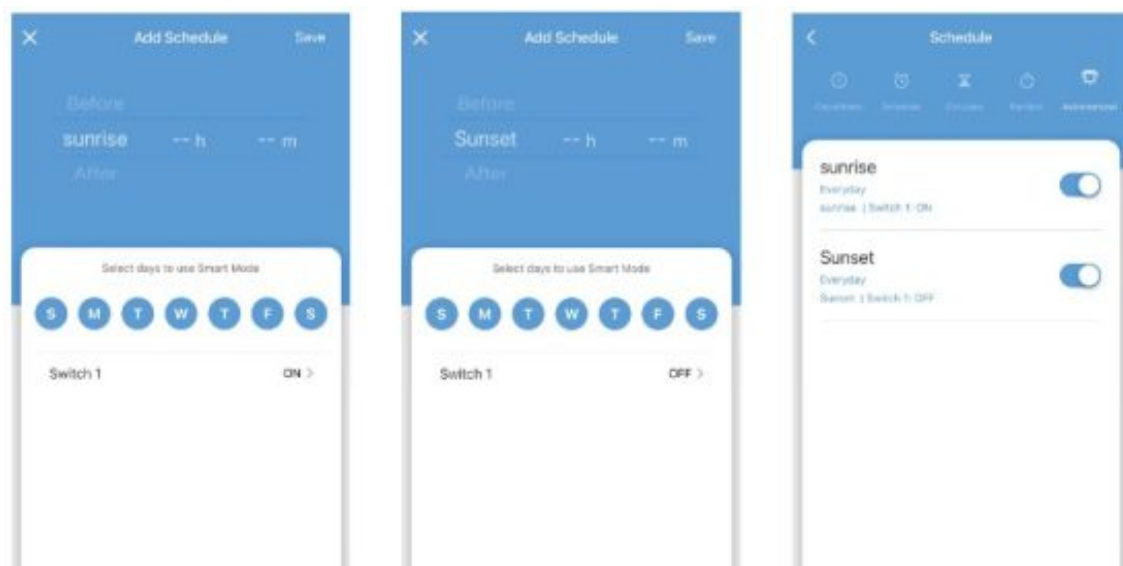
3. **Circulate:** You can set the duration of each ON and OFF, the Start and End time according to your needs. The ON/OFF schedule will repeat between the Start and End time. For example: You set a period from 9:00 to 15:00 on Monday to Friday, turn on your light for 1 hour, and off for 30 minutes. The outlet will repeat ON/OFF from 9:00 to 15:00.



4. **Random:** Either +/-30 minutes than setting ON/OFF time, randomly control device when you are away from home.



5. **Astronomical:** The controlled device will turn on or off at (before or after) sunset or sunrise.



Work with Amazon Alexa

Link dewensils account to Alexa

1. Open your Alexa app, tap “Skills” in the menu, and then search “dewenwils” Select “dewenwils” and tap “ENABLE” to enable the dewenwils skills.
2. You will be directed to the account link page. Type in your “dewenwils” account and password, don’t forget to select your country/ region where your account belongs to. And then tap “Link Now” to link your dewenwils account.

Control your smart devices

Discover devices: Echo needs to discover your smart devices before controlling them. You say “Alexa. discover devices” to Echo. Echo will discover devices that have already been added in “dewenwils “app. You can also tap “discover devices” to discover the smart devices. Discovered devices will be shown in the list. Note: Every time you change the device’s name on the dewenwils app, Echo must re-discover before you control them.

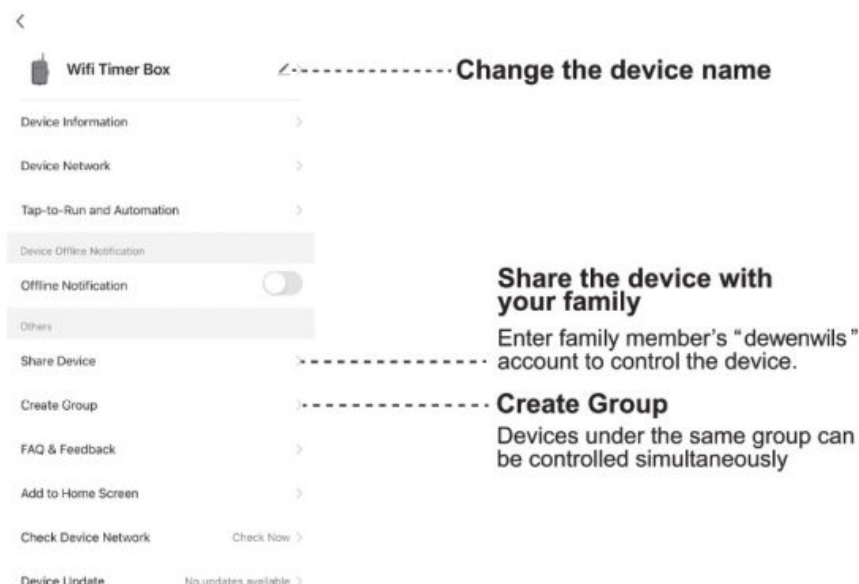
Work with Google Home

1. Make sure the smart device has been added to the dewenwils App and the device is online.
2. Make sure the Google Home App is installed.

Start

1. Click Me in the bottom right corner, click Google Assistant, click Link with Google Assistant.
2. The App will pull up the Google Home App, click Link.
3. Click agree Link.
4. Wait for it to finish loading, your smart devices will be synced to Google Assistant or Google Home App that can control them. Next, you can assign rooms to your devices in the Google Home App.

Other functions



FCC Radiation Exposure Statement:

This equipment complies with FCC radiation exposure limits set forth for an uncontrolled environment.

This equipment should be installed and operated with minimum distance 20cm between the radiator & your body. This transmitter must not be co-located or operating in conjunction with any other antenna or transmitter.

FCC STATEMENT

This device complies with Part 15 of the FCC rules. Operation is subject to the following two conditions:

1. this device may not cause harmful interference, and
2. this device must accept any interference received, including interference that may cause undesired operation.

FCC Caution: Any changes or modifications not expressly approved by the party responsible for compliance could void the user's authority to operate this equipment.

NOTE: This equipment has been tested and found to comply with the limits for a Class B digital device, pursuant to Part 15 of the FCC Rules. These limits are designed to provide reasonable protection against harmful interference in a residential installation.

This equipment generates uses and can radiate radio frequency energy and, if not installed and used in accordance with the instructions, may cause harmful interference to radio communications. However, there is no guarantee that interference will not occur in a particular installation. If this equipment does cause harmful interference to radio or television reception, which can be determined by turning the equipment off and on, the user is encouraged to try to correct the interference by one or more of the following measures:

- Reorient or relocate the receiving antenna.
- Increase the separation between the equipment and receiver.
- Connect the equipment into an outlet on a circuit different from that to which the receiver is connected.
- Consult the dealer or an experienced radio/TV technician for help.

One Year Limited Warranty

Supported by our professional R&D team and QC team, we provide One Year Warranty for materials and workmanship from the purchase date. Please note that the warranty does not cover damage caused by personal misuse or improper installation.

Please attach your Order ID and Name so that our dedicated customer service team can help you better.



Made in China

ISED Warning:


This device contains licence-exempt transmitter(s)/receiver(s) that comply with Innovation, Science and Economic Development Canada's licence-exempt RSS(s). Operation is subject to the following two conditions:

1. This device may not cause interference.
2. This device must accept any interference, including interference that may cause undesired operation of the device.

ISED Radiation Exposure Statement:

This equipment complies with ISED RF radiation exposure limits set forth for an uncontrolled environment. This transmitter must not be co-located or operating in conjunction with any other antenna or transmitter. This equipment should be installed and operated with minimum distance 20cm between the radiator& your body.

Documents / Resources

	<p>Jewenwils HOWT01E Outdoor Wi-Fi Pool Timer [pdf] Instruction Manual</p> <p>016, 2A4G9-016, 2A4G9016, HOWT01E Outdoor Wi-Fi Pool Timer, HOWT01E, Outdoor Wi-Fi Pool Timer, Wi-Fi Pool Timer, Pool Timer, Timer</p>
---	--

References

- [User Manual](#)

📁 Jewenwils

🔑 016, 2A4G9-016, 2A4G9016, HOWT01E, HOWT01E Outdoor Wi-Fi Pool Timer, Jewenwils, Outdoor Wi-Fi Pool Timer, Pool Timer, Timer, Wi-Fi Pool Timer

Leave a comment

Your email address will not be published. Required fields are marked *

Comment *

Name

Email

Website

☐ Save my name, email, and website in this browser for the next time I comment.

Post Comment

Search:

Search

[Manuals+](#) | [Upload](#) | [Deep Search](#) | [Privacy Policy](#) | [@manuals.plus](#) | [YouTube](#)

This website is an independent publication and is neither affiliated with nor endorsed by any of the trademark owners. The "Bluetooth®" word mark and logos are registered trademarks owned by Bluetooth SIG, Inc. The "Wi-Fi®" word mark and logos are registered trademarks owned by the Wi-Fi Alliance. Any use of these marks on this website does not imply any affiliation with or endorsement.

