



## **Contents** [ [hide](#) ]

- 1 [JETI model DS-24 Handheld Transmitter User Guide](#)
- 2 [Control Stick Tension Adjustment](#)
- 3 [Be sure to disconnect the transmitter battery pack connector.](#)
- 4 [Be sure to disconnect the transmitter battery pack connector.](#)
- 5 [Changing the transmitter mode](#)
- 6 [A. Setting the quad stick into the mode without locking the middle position – gas](#)
- 7 [B. Setting the multi-mode gimbal into the mode with locking the middle position – elevator.](#)
- 8 [Transmitter Gimbals with Switch or Button](#)
- 9 [5.2 One of the most important features of a JETI transmitter is the switch function assignment flexibility.](#)
- 10 [Be sure to disconnect the transmitter battery pack connector.](#)
  - 10.1 [Transmitter Battery Pack](#)
  - 10.2 [5.4.1 Charging](#)
  - 10.3 [5.4.1 Battery Replacement](#)
  - 10.4 [PPM Input/Output connector](#)
  - 10.5 [Read More About This Manual & Download PDF:](#)
- 11 [Documents / Resources](#)
  - 11.1 [References](#)

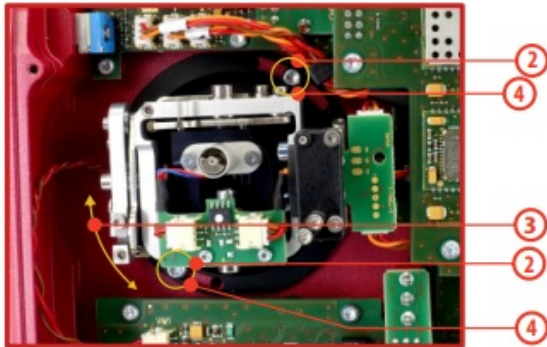
## **JETI model DS-24 Handheld Transmitter User Guide**



1. Switch off the transmitter and remove the 10 screws that secure the radio back. Next, remove the radio back cover.  
Be sure to disconnect the transmitter battery pack connector.



2. Loosen both machine screws securing the control stick assembly.



3. Adjust (rotate) to desired position.
4. Securely tighten both machine screws securing the control stick assembly.
5. Reconnect transmitter battery pack and reinstall radio back cover and cover screws.

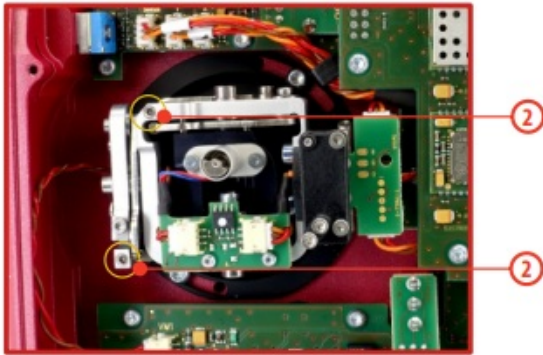
## Control Stick Tension Adjustment

The stick gimbal tension is fully adjustable for each axis. This allows you to fully customize your radio's control feel. Simply adjust each gimbal's spring to your desired tension.

1. Switch off the transmitter and remove the 10 screws that secure the radio back. Next, remove the radio back cover.

**Be sure to disconnect the transmitter battery pack connector.**

2. Use indicated machine adjustment screws to change the desired spring tension. By turning the screw counterclockwise, you will loosen spring. As a result the moving resistance



3. Reconnect transmitter battery pack and reinstall radio back. Reconnect transmitter battery pack and reinstall radio back cover and cover of the control stick will decrease. By turning the screw clockwise, you will tighten spring tension. As a result the moving resistance of the control stick will increase.

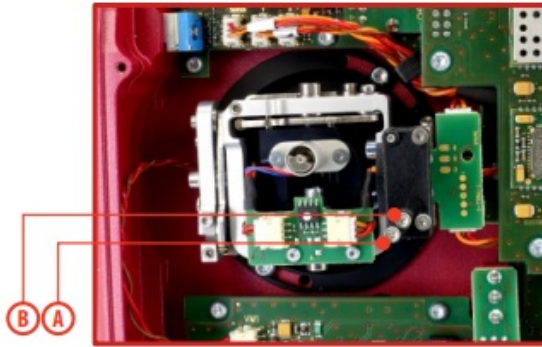
#### Ratchet Tension Adjustment

Whether you prefer smooth throttle feel or ratchet throttle feel, you can adjust the transmitter either way you like allowing you to fully customize your transmitter's feel. Each tension is set by a different screw.

Be sure to disconnect the transmitter battery pack connector.

Turn slowly (counter-clockwise) until you achieve the desired ratchet tension. For smooth tension adjustment, use the machine screw "B". Turn slowly (clockwise) until you achieve the desired smooth tension. Over and cover screws.

4. **For ratchet tension adjustment** use the machine screw "A".
5. Switch off the transmitter and remove the 10 screws that secure the radio back. Next,



remove the radio back cover.

### 5.1.3 Throttle stick travel adjustment

The throttle stick travel is adjustable to suit your flying style.

Switch off the transmitter and remove the 10 screws that secure the radio back. Next, remove the radio back cover.

**Be sure to disconnect the transmitter battery pack connector.**

Use indicated machine adjustment screws to limit the throttle stick travel. By turning the screw clockwise, you will shorten the throttle stick travel.

1. Reconnect transmitter battery pack and reinstall radio back cover and cover

After making a limit the throttle stick travel you must recalibrate the transmitter stick in the software menu, see section „***Calibration of Proportional Controls***”.

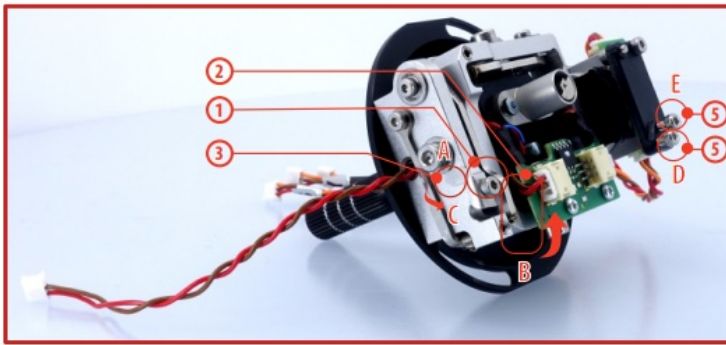
## Changing the transmitter mode

The transmitter is equipped with universal multimode gimbals. Both gimbals are identical and can be adjusted mechanically for modes 1-

After mechanical adjustment it is necessary to set a specific transmitter mode in the menu ***System → Configuration → Stick mode 1-4.***

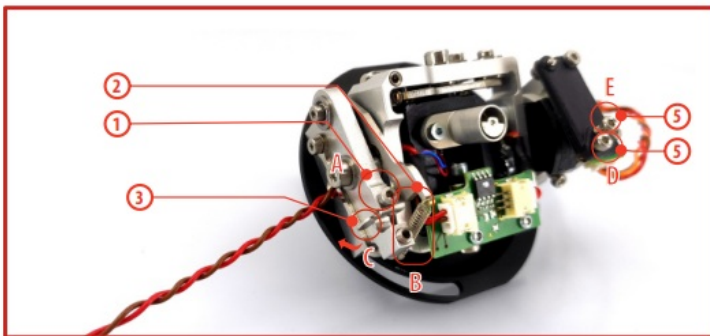
To change the quad sticks settings, unscrew the back cover of the transmitter **and disconnect the battery connector.**

**A. Setting the quad stick into the mode without locking the middle position – gas**



1. Loosen the screw
2. Lift the lever B so as it is possible to arrest the lock
3. Turn the lock C 90° in the direction of the arrow and arrest the lever B in the upper position.
4. Tighten the screw
5. Tightening the the screws D and E sets the desired arresting with steps and smooth

## **B. Setting the multi-mode gimbal into the mode with locking the middle position – elevator.**



1. Loosen the screw
2. Slightly lift the lever
3. Turn the lock C in the direction of the arrow and arrest the lever B in the upper position.
4. Move the lever C in the direction of the arrow to release the lever

1. Tighten the screw
2. Loosen the screws E and D in a position so that the tension is removed from the

## **Transmitter Gimbals with Switch or Button**

### **Installation**

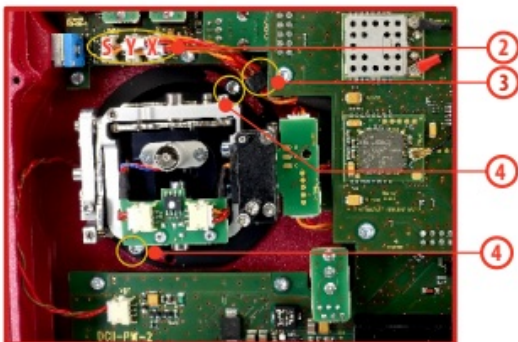
If you want to operate the DC-24 II transmitter using the optional stick end switch or button functions, you must purchase one or more of these separately:

- Stick with 2-position switch
- Stick with 3-position switch
- Stick with push-button
- Stick with potentiometer



**Advice:** For installation of the optional gimbal stick ends with switches/buttons we recommend that you send your transmitter to one of the factory authorized service centers or to your authorized dealer.

**Advice:** For installation of the optional gimbal stick ends with switches/buttons we recommend that you send your transmitter to one of the factory authorized service centers or to your authorized dealer.



2. Disconnect the control stick assembly wires from the Tx board (3 wires **X, Y, S**).
  3. Remove the stick assembly connecting wires from their
  4. Remove both machine installation screws for each of the control stick
  5. Carefully remove both control stick Gently pull in your direction (toward the transmitter back side). This upgrade will be done outside of the transmitter case.
- 
2. Unscrew the upper part of the stick assembly (anticlockwise).



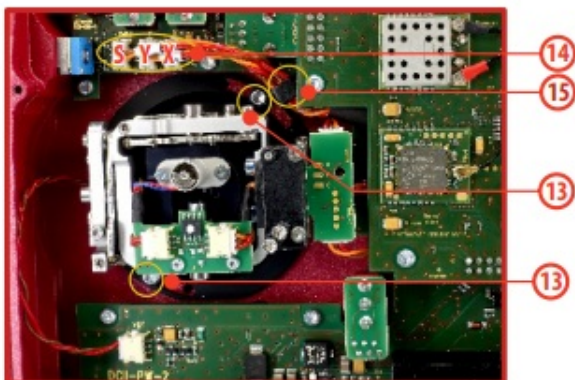
3. Insert the connecting wires through the hollow opening of the transmitter
4. Adjust length of the stick to suit your flying

<b>Note:</b> After installation of the optional stick ends with switch or
button make sure that while adjusting the stick length you observe
the wires that pass through the stick shaft and through the gimbal
opening in order to prevent damaging the connecting cables. The
safest method is to remove the small set-screw from the side of the
stick housing to allow the switch or knob internals to remain
stationary while you rotate the stick housing for height adjustment.

Pass the switch wires through the same gimbal opening as the hall sensor cable (through the center of the gimbal assembly).

Next insert wire ends through the opening of the printed circuit board and solder them to the matching soldering points in such a way that the same color wires lay on the top of each

1. Carefully move transmitter sticks to their full outside positions in order to make sure that you have sufficient wire length and, if needed, adjust accordingly. The connecting cables for all moving parts of the unit should have sufficient length in order not to be exposed to any mechanical damage and any bending stresses.



12. Install stick unit assembly back to correct

13. Install and secure the machine screws for the control stick
14. Connect control stick assembly wires to the Tx board connector (3 wires **X, Y, S** ). Pay close attention to the wire lengths. Connect the longest wire as the first one from the outside of the transmitter (**3 connectors X, Y, S**).
15. Secure the stick assembly wires into their
16. Reconnect transmitter battery pack and reinstall radio back cover and cover

After the switch has been installed into the stick assembly you have to re-configure and enable it in the transmitter software before it will function properly. This can be done in the transmitter menu **“Main menu->Advanced setup->Sticks/ switchesetup“**.

## **5.2 One of the most important features of a JETI transmitter is the switch function assignment flexibility.**

The DC-24 II transmitter automatically detects the type of switch and assigns the selected function. There are many switches available to suit different needs. See your Jeti retailer for switch availability.

You may either swap the existing switches around or take advantage of the optional accessories and create your own custom configuration.

### ***Factory Switch Configurations for the DC-24 II Transmitter***

#### **Switch Exchange:**

Switch off the transmitter and remove the 10 screws that secure the radio back. Next, remove the radio back cover.

## **Be sure to disconnect the transmitter battery pack connector.**

2. With the specialized wrench (not included) carefully loosen and remove the switch installation
3. Carefully hold the switch by its printed circuit board assembly and slowly pull it. Use this method to also remove and exchange all of the other switches. After re-assembling and turning on your transmitter the software will sound a warning

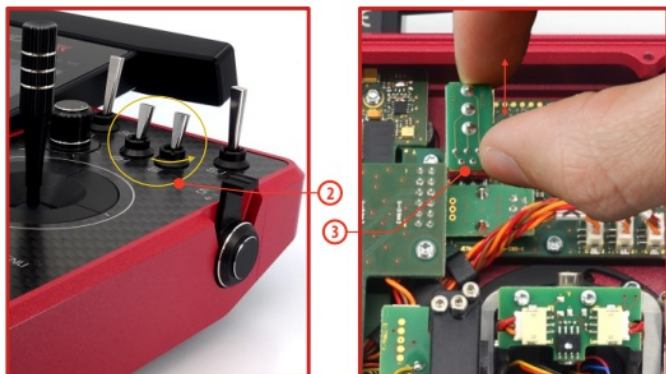


reminding you that you have executed a change. Always reinspect all assigned functions of the switches before attempting to fly.

**Sa** – 2 position spring-loaded long switch

**Sb** – 3 position short switch **Sc** – 2 position short switch **Sd** – 2 position long switch **Se** – 3 position short switch **Sf** – 3 position short switch

**Sg** – 3 position long switch **Sh** – 2 position short switch **Si** – 2 position short switch **Sj** – 3 position long switch



Carefully move transmitter sticks to their full outside positions in order to make sure that you have sufficient wire length and, if needed, adjust accordingly. The connecting cables for all moving parts of the unit should have sufficient length in order not to be exposed to any mechanical damage and any bending stresses

Transmitter gimbals are used for controlling the basic flight functions like throttle, roll(aileron), pitch(elevator), and yaw(rudder). Immediately under the transmitter gimbal sticks you can see four push-buttons which are the programmable, digital trim buttons.



The digital trims are used for fine trimming of the flying model. When the transmitter is

turned off, the trim values are stored in memory and are recalled when the system is turned back on.

Every model has its own trim setup. Also all flight modes may be configured to use different trim configurations. By pressing one of the buttons, the screen will automatically change to display the graphic position of that trim. The transmitter trims feature an acoustic step and centre beep alarm.

**In the “*Digital trim*” menu it’s possible to enable a special function used as automatic trimming.** Digital trim steps and trim range setting is explained in “***Main menu->Fine tuning/flight modes->Digital trim***”.

## **Transmitter Battery Pack**

comes equipped with its own built-in advanced battery management and charging circuit. In switched-on position, the transmitter LCD display shows the status and condition of the battery pack. The Li-Ion battery is factory installed.

### **5.4.1 Charging**

The transmitter can be charged with the supplied mains adapter with a USB C cable. Charging time is approximately 3 hours. The transmitter can be on or off while charging. The charging status is indicated by the LED or if the transmitter is switched on, in the display.

#### **Charging procedure:**

1. Plug the charging adapter into the
2. Plug the cable with the connector leading from the charging adapter into the USB C connector of the

**The charging status is displayed by a circular LED:** ž **Green LED** lights up – transmitter is on, charger is not connected. ž **Blue LED** flashes – the transmitter is charging; the frequency shows the state of charge. A more permanent glow means a higher state of charge in the accumulator.

- **Purple LED** lights up – the transmitter is fully charged; the charger is still

These colours can be changed by the user. Possible choices are white, cyan, purple, yellow, blue, green or red.

The brightness of the LED corresponds to the backlight intensity setting of the display.

### 5.4.1 Battery Replacement

Should you decide to replace the transmitter battery, please follow these steps:

1. Switch off the transmitter and remove the 10 screws that secure the radio back. Next, remove the radio back cover.
2. Disconnect the transmitter battery

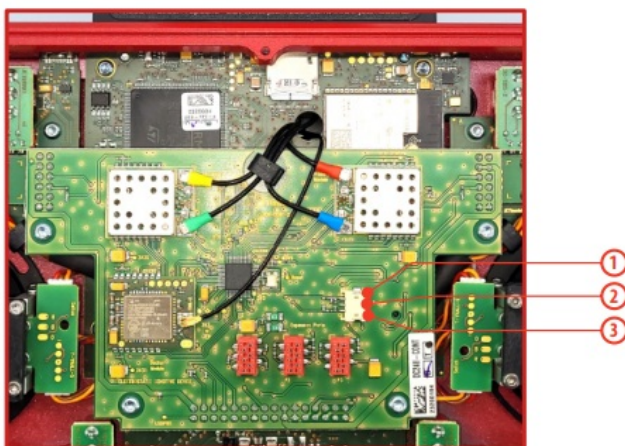
Loosen the battery fastening strap and remove the battery



**Note:** If the transmitter battery has been disconnected for longer than 1 minute, the time, and date will be deleted.

### PPM Input/Output connector

The transmitter has an available internal three-pin connector for PPM input/output.




1. PPM output (3V logic)

- 2. Negative (-) pin
- 3. PPM input (3V logic)

*Read More About This Manual & Download PDF:*

## Documents / Resources

	<a href="#">JETI model DS-24 Handheld Transmitter [pdf]</a> User Guide 2A7CJ-DS24V2US, 2A7CJDS24V2US, ds24v2us, DS-24 Handheld Transmitter, DS-24, Handheld Transmitter, Transmitter
---	---

## References

- [User Manual](#)

📁 JETI model

💎 2A7CJ-DS24V2US, 2A7CJDS24V2US, DS 24, DS-24 Handheld Transmitter, ds24v2us, Handheld Transmitter, JETI model, Transmitter

---

## Leave a comment

Your email address will not be published. Required fields are marked \*

Comment \*

Name

Email

Website

☐ Save my name, email, and website in this browser for the next time I comment.

Post Comment

Search:

e.g. whirlpool wrf535swhz

Search

[Manuals+](#) | [Upload](#) | [Deep Search](#) | [Privacy Policy](#) | [@manuals.plus](#) | [YouTube](#)

This website is an independent publication and is neither affiliated with nor endorsed by any of the trademark owners. The "Bluetooth®" word mark and logos are registered trademarks owned by Bluetooth SIG, Inc. The "Wi-Fi®" word mark and logos are registered trademarks owned by the Wi-Fi Alliance. Any use of these marks on this website does not imply any affiliation with or endorsement.