

## JENNAIR T2 Single Probe Thermo and Timer



# JENNAIR T2 Single Probe Thermo and Timer User Guide

[Home](#) » [JENNAIR](#) » JENNAIR T2 Single Probe Thermo and Timer User Guide 

### Contents

- [1 JENNAIR T2 Single Probe Thermo and Timer](#)
- [2 Specifications](#)
- [3 Product Usage Instructions](#)
- [4 Product Overview](#)
- [5 Product Features](#)
- [6 INSTRUCTION](#)
- [7 Product Feature Guide](#)
- [8 Frequently Asked Questions](#)
- [9 Documents / Resources](#)
  - [9.1 References](#)

## JENNAIR

### JENNAIR T2 Single Probe Thermo and Timer



### Specifications

- Bluetooth compatible
- Backlight for easy viewing

- Temperature settings
- Single probe
- Alarm and timer features
- Can be set in Celsius or Fahrenheit
- Compatible with iOS 8.0 or later, Android 4.4 or later
- Image resolution: 1920 x 1080, 1280 x 720, 960 x 540

### **Product Overview:**

The T2 thermometer features an LCD display screen for easy viewing of cooking temperature and times. It offers various cooking methods at different temperature settings. When food reaches the desired temperature, a tone sounds, and the display indicates that the set temperature has been reached. The T2 is Bluetooth compatible with mobile devices, making cooking experiences more enjoyable and convenient.

### **Product Features:**

- Bluetooth connectivity
- Backlight for visibility
- Alarm function
- Temperature curve display
- Timer feature
- Single probe connection
- Temperature can be set in Celsius or Fahrenheit

### **Product Usage Instructions**

#### **Step 1: Download and Install the App**

Download the free T2 App from the App Store or Google Play Store.

#### **Step 2: Setup User Account**

Launch the app and follow the on-screen prompts to set up a user account and connect your T2 thermometer.

#### **Step 3: Connect the Thermometer**

Follow the instructions on the app to connect your T2 thermometer to your mobile device.

#### **Step 4: Customize Settings**

Set up your favorite cook times, temperatures, and default cooking options within the app.

### **Care Instructions:**

After each use, wash the probe thoroughly and dry it with a towel. Keep the thermometer out of reach of children.

### **Product Overview**

T2 has a LCD display screen that makes viewing cooking temperature and cooking times easy and quick. Choose different methods of cooking at different temperature settings.

When the temperature of the food reaches the desired temperature setting, a tone will sound and the display will show that the set temperature has been reached.

T2 is Bluetooth compatible with mobile devices and is easily portable making cooking experiences more enjoyable

and convenient.

Connect with the free T2 App, available for either iOS or Android devices.



Connect with the free T2 App Awake your true grilling potential

## Product Features



- The product can be connected to a single probe
- A tone sounds when food is at temperature or the set time has been reached
- Temperature readings can be set Celsius or Fahrenheit
- The probe can be used as a timer
- There are various food options to choose from
- Add favorite food options for frequently used temperature and time settings
- The free app is easy to use and provides additional information about the meat probe

## Care

Wash the probe thoroughly after using and dry with a towel. Keep out of reach from children.

## INSTRUCTION

### STEP 1

Download the App.

### STEP 2

Once the app is installed, launch the app. You will be guided to set up a user account and to connect your product.

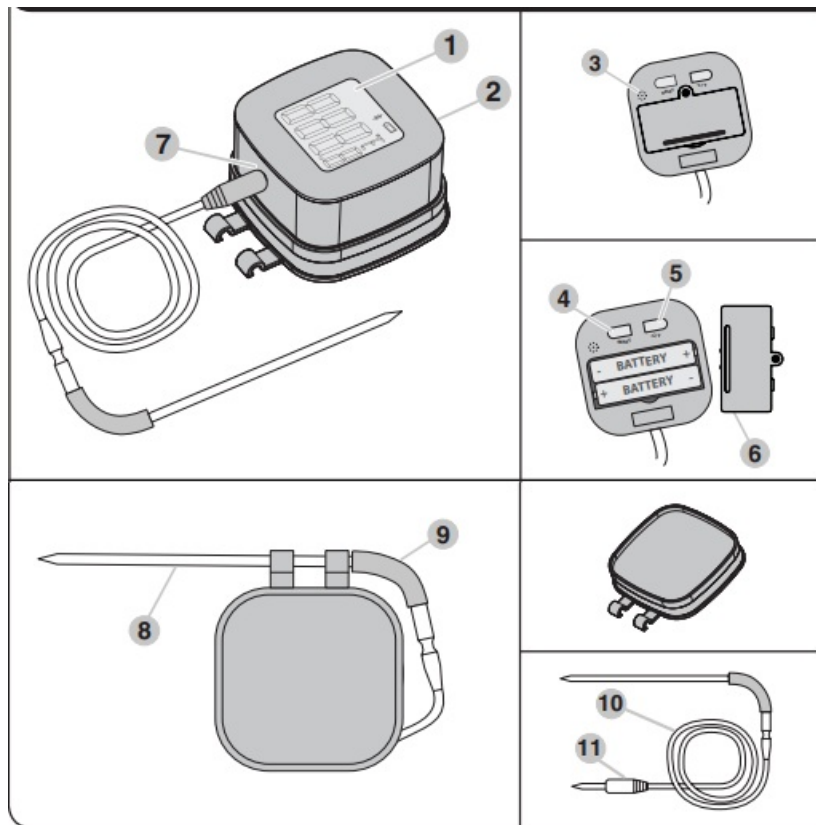
### STEP 3

Follow the prompts on the screen to connect your product.

### STEP 4

Setup favorite cook times, favorite cook temperatures, and default cooking options.

## Product Feature Guide



## Single Probe

### Front

1. LCD Screen
2. Light and ON/OFF button

### Back

3. Speaker
4. Reset Button
5. C/F toggle Button
6. Battery Cover
7. Probe Plug-in Location
8. Stainless Steel Probe
9. Silicon Sheath Handle
10. Metal Shielded Wire with Steel Wire Gauze
11. Probe Plug

## Parts Supplied

- T2 Thermometer
- Meat Probe
- Probe Rack
- Installation Instructions

## Compatible with

- iOS 8.0 or later
- Android 4.4 or later
- Image resolution 1920 x 1080, 1280 x 720, 960 x 540

## Contact us

E-mail: [info@cnkaitai.com](mailto:info@cnkaitai.com)

Website: [www.cnkaitai.com](http://www.cnkaitai.com)  
[www.thermometerbbq.com](http://www.thermometerbbq.com)  
[www.cnzjshenpu.en.alibaba.com](http://www.cnzjshenpu.en.alibaba.com)

## Frequently Asked Questions

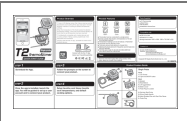
**Q: Can I use the T2 thermometer with both iOS and Android devices?**

**A:** Yes, the T2 thermometer is compatible with iOS 8.0 or later and Android 4.4 or later.

**Q: Can I set temperature readings in both Celsius and Fahrenheit?**

**A:** Yes, you can choose between Celsius and Fahrenheit settings on the thermometer.

## Documents / Resources

	<p><a href="#">JENNAIR T2 Single Probe Thermo and Timer</a> [pdf] User Guide          JPIFC736RM, JPIFC736RM, T2 Single Probe Thermo and Timer, T2, Single Probe Thermo and Timer, Probe Thermo and Timer, Thermo and Timer, Timer</p>
---	--

## References

- [cnzjshenpu.en.alibaba.com](http://cnzjshenpu.en.alibaba.com)
- [Digital Thermometer](#)| [Bimetal Thermometer](#)| [Back center thermometer](#)| [Remote thermometer](#)| [Indoor & Outdoor hygrometer](#)|[Instant Read Thermometer](#)|[Oven/Freezer Thermometer](#)|[Cooking Thermometer](#)|[Griller Thermometer](#)
- [User Manual](#)

[Manuals+](#). [Privacy Policy](#)

This website is an independent publication and is neither affiliated with nor endorsed by any of the trademark owners. The "Bluetooth®" word mark and logos are registered trademarks owned by Bluetooth SIG, Inc. The "Wi-Fi®" word mark and logos are registered trademarks owned by the Wi-Fi Alliance. Any use of these marks on this website does not imply any affiliation with or endorsement.