

Jedver
A02 Smart
LED Driver



Jedver A02 Smart LED Driver Instruction Manual

[Home](#) » [Jedver](#) » Jedver A02 Smart LED Driver Instruction Manual 

Contents

1 Jedver A02 Smart LED Driver

2 Specifications

3 Dimensions

4 Connection Instructions

5 Safety Warning

6 FAQs

7 Documents / Resources

7.1 References

8 Related Posts

Jedver

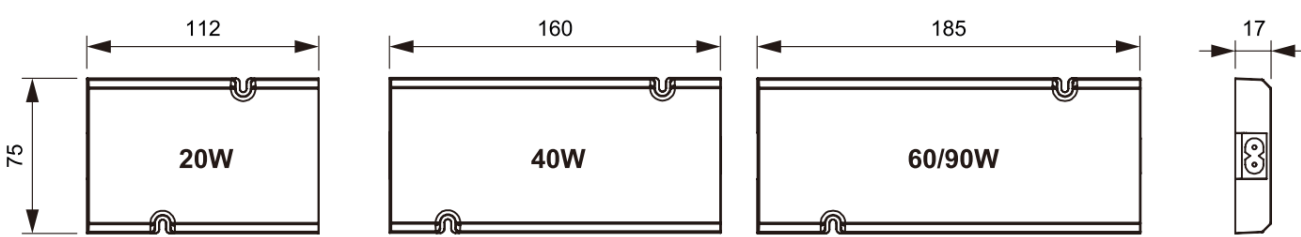
Jedver A02 Smart LED Driver



Specifications

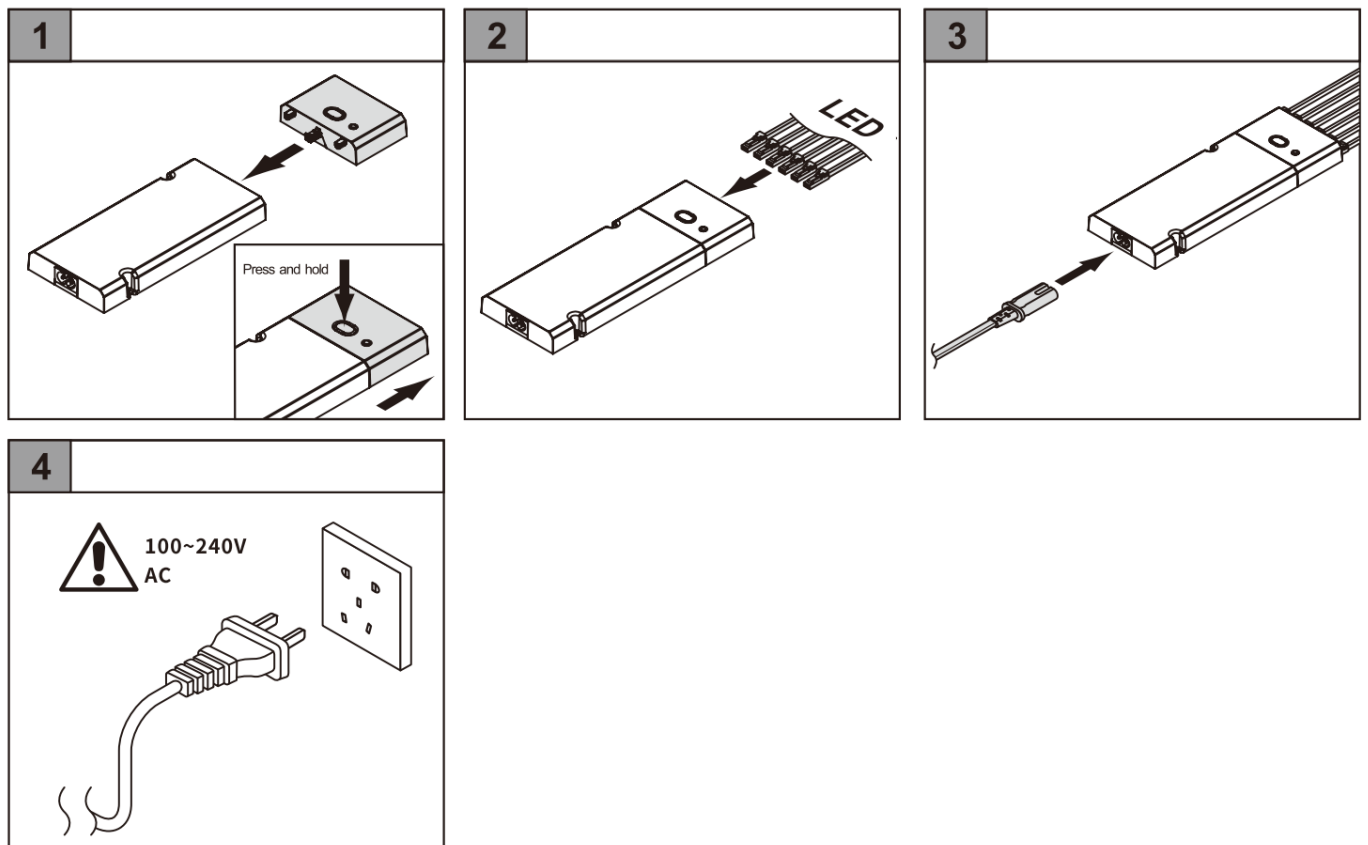
Driver	12/24V DC
--------	-----------

Dimensions

Driver	12/24V DC		
			

- 20W
- 40W
- 60/90W

Connection Instructions



1. Press and hold the button on the driver to prepare for the connection.
2. Connect the LED strip to the driver by aligning the connectors.
3. Ensure the connection is secure and the wires are properly inserted.

4. Plug the driver into a power outlet (100-240V AC).

Safety Warning

Ensure all connections are made with the power off to avoid electrical shock.

FAQs

What voltage does the driver support?

- The driver supports 12/24V DC.

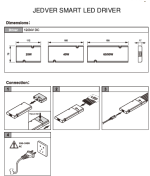
What power options are available?

- The driver is available in 20W, 40W, and 60/90W options.

Can I use this driver with any LED strip?

- Ensure compatibility with 12/24V DC LED strips for optimal performance.

Documents / Resources

	<p>Jedver A02 Smart LED Driver [pdf] Instruction Manual A02, A02 Smart LED Driver, Smart LED Driver, LED Driver, Driver</p>
---	---

References

- [User Manual](#)

[Manuals+](#), [Privacy Policy](#)

This website is an independent publication and is neither affiliated with nor endorsed by any of the trademark owners. The "Bluetooth®" word mark and logos are registered trademarks owned by Bluetooth SIG, Inc. The "Wi-Fi®" word mark and logos are registered trademarks owned by the Wi-Fi Alliance. Any use of these marks on this website does not imply any affiliation with or endorsement.