



ELEMENT IV
Shop JDS Labs



JDSLABS ELEMENT IV Shop JDS Labs Owner's Manual

[Home](#) » [JDSLABS](#) » JDSLABS ELEMENT IV Shop JDS Labs Owner's Manual 

Contents

- [1 JDSLABS ELEMENT IV Shop JDS Labs](#)
- [2 Product Usage Instructions](#)
- [3 FAQs](#)
- [4 QUICK SETUP](#)
- [5 CONFIGURATION](#)
- [6 OPTIONS MENU](#)
- [7 Listening Tips](#)
- [8 SETUP](#)
- [9 Troubleshooting](#)
- [10 SUPPORT](#)
- [11 Documents / Resources](#)
 - [11.1 References](#)



JDSLABS ELEMENT IV Shop JDS Labs



Specifications

- Model: Element IV
- Input: USB, S/PDIF (Optical)
- Output: Headphone output, RCA Preamp Outputs
- Gain Settings: Low Gain, High Gain
- Sampling Rate: PCM @ 48.0kHz

Product Usage Instructions

Quick Setup:

1. **Step 01:** Connect AC power adapter to rear power jack (16VAC), then connect to wall outlet.
2. **Step 02:** Connect USB cable between your computer and the USB jack.
3. **Step 03:** Connect headphones to the front headphone output jack.
4. **Step 04:** Pressing the Power button turns Element on or off.
5. **Step 05:** Slowly raise the volume knob to an appropriate listening level. Pressing the volume knob toggles between USB and Optical input.

Configuration:

Automatic Gain: Element IV handles audio logic for a blissful experience, automatically toggling the optimal gain state as you adjust volume. Low Gain is active from -127.5 to 0 dBFS, while High Gain ranges from 0 to 14 dB. Safe listening levels are recommended between -50 dB to -20 dB for most headphones.

Display: Element IV displays status information while you interact and vanishes to keep focus on listening.

Options Menu:

Settings: Press down on the Volume Knob for 3+ seconds to access the Options Menu. Navigate using the knob and push to select. Adjust settings through Core for an enhanced experience.

Connectivity:

Inputs: Element IV accepts digital input via USB or S/PDIF (optical). Rear mode button toggles between inputs.

Outputs: Provides headphone output and RCA Preamp Outputs. Tactile Volume knob button toggles between output modes. Only one output active at a time.

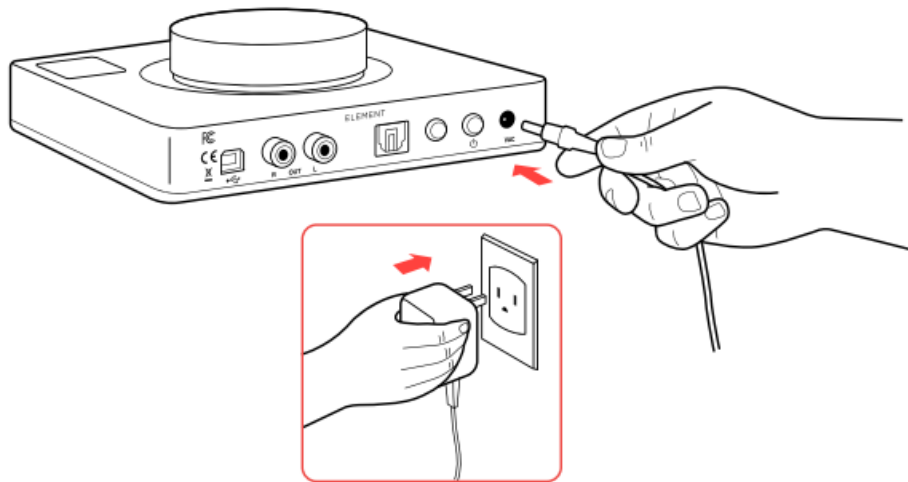
FAQs

- **Q: Can I connect speakers directly to Element IV?**
 - A: No, Element IV is designed for headphone and preamp output only. For speaker connection, use appropriate amplification.
- **Q: How do I adjust the EQ settings on Element IV?**
 - A: Access Core through a supported desktop browser for graphical control of the 10-band parametric EQ.

QUICK SETUP

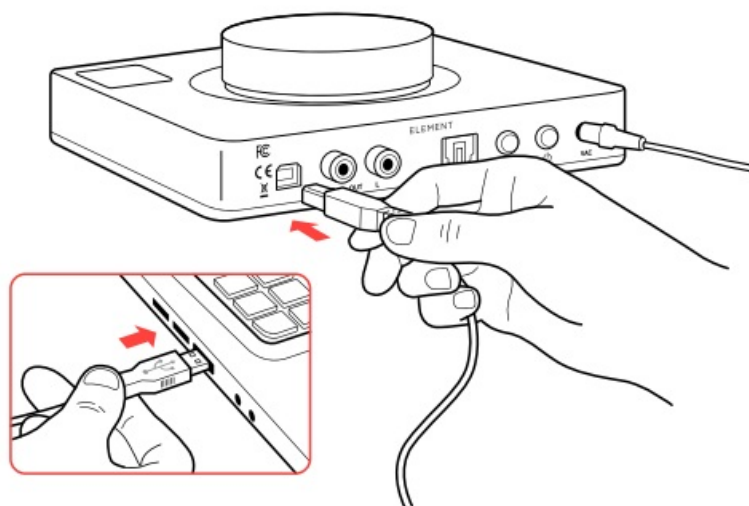
1. STEP 01

Connect AC power adapter to rear power jack (16VAC), then connect to wall outlet.



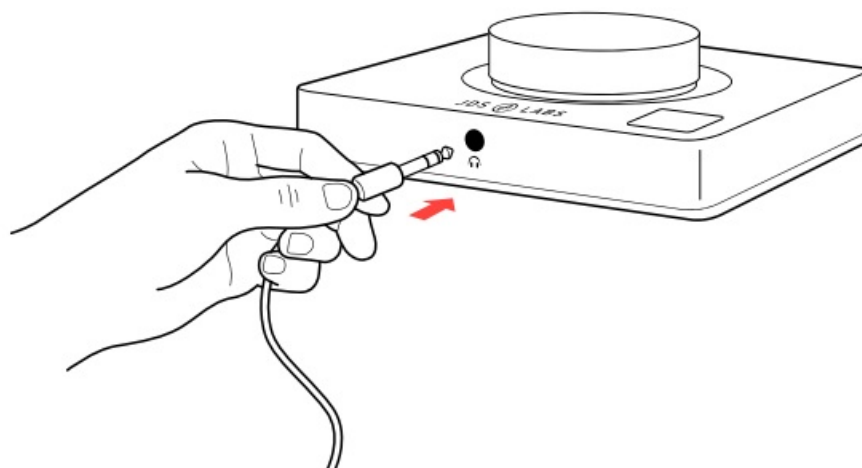
2. STEP 02

Connect USB cable between your computer and the USB jack



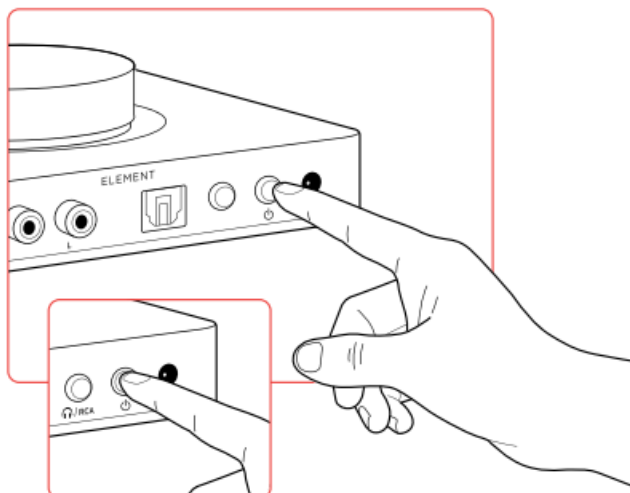
3. STEP 03

Connect headphones to the front headphone output jack.



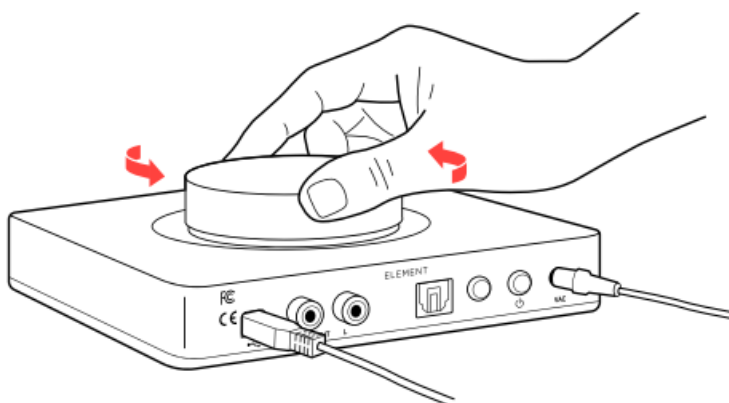
4. STEP 04

Pressing the Power button turns Element on or off.



5. STEP 05

Slowly raise the volume knob to an appropriate listening level.



Pressing the volume knob toggles between USB and Optical input.



Please see Connectivity and Computer Setup for additional help.

CONFIGURATION

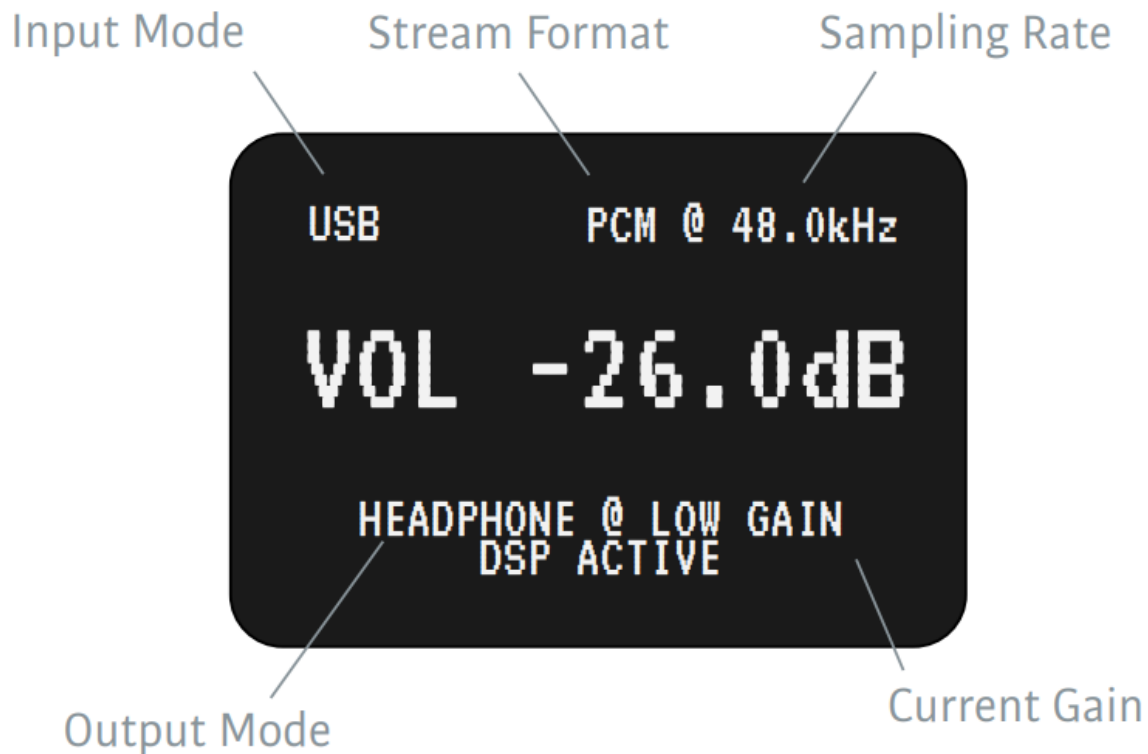
Automatic Gain

Element IV handles audio logic for a blissful experience, automatically toggling the optimal gain state as you adjust volume. No thought is required on your part. Enjoy! Low Gain is always active at volume levels from -127.5 to 0 dBFS. Continuing to turn the knob beyond 0 dB presents an on-screen progress bar, signifying a pending transition to High Gain. Element IV automatically adjusts volume for a pleasant transition between gain states. You will see an effective volume range of 0 to 14 dB in High Gain. Please observe safe listening habits under Listening

Tips. Typical listening levels range from -50 dB to -20 dB for most dynamic and planar headphones, depending on your music collection and preferences. For IEMS, expect to listen below -50 dBFS.

Display

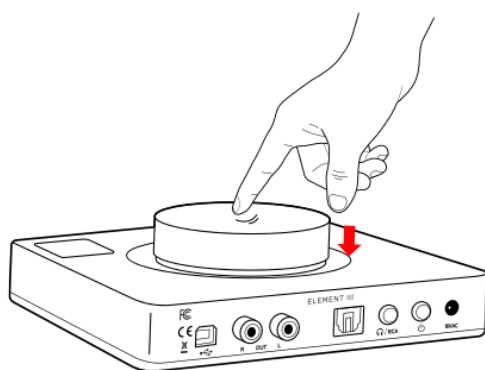
Element IV displays status information while you interact, then vanishes so that your focus remains on listening.



OPTIONS MENU

Settings

Press for 3+ seconds



ELEMENT IV
UI SETTINGS
DSP CONFIG (USB)
USB AUDIO CLASS
MUTE INACTIVE USB

Pressing down on the Volume Knob for 3+ seconds enters the Options Menu. Turn the knob to navigate up/down the options menu. Push the knob to make a selection. For best experience, we recommend adjusting settings through Core. You will find up-to descriptions of each option and feature within Core.

Core™

Core provides access to every setting available in Element IV, including graphical control of its 10-band parametric EQ. Visit core.jdslabs.com from a supported desktop browser:

- Chrome
- Edge
- Opera
- Brave
- Firefox with WebSerial for Firefox

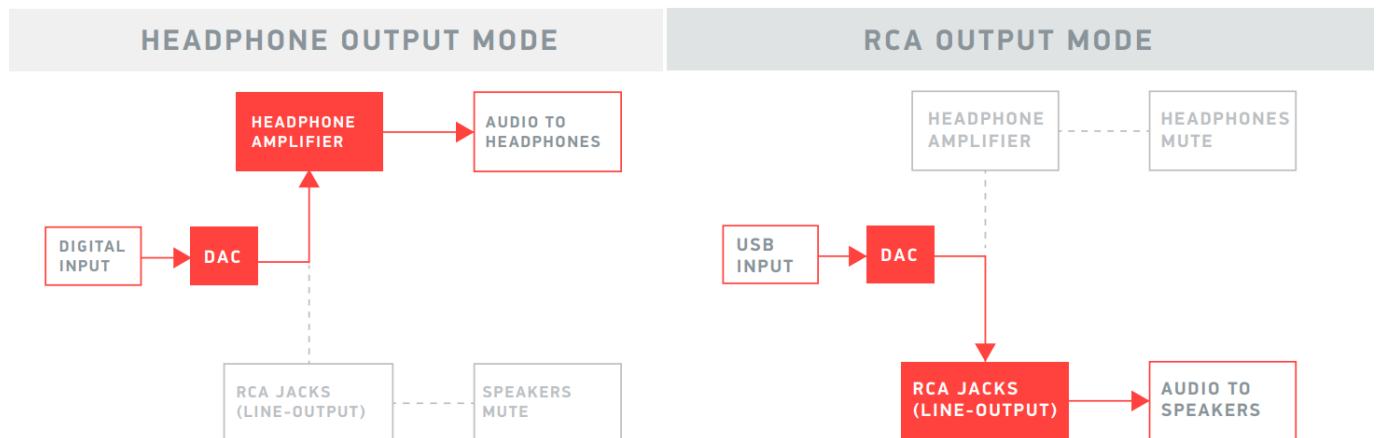
Connectivity

Inputs

Element IV accepts digital input via USB or S/PDIF (optical). Press the rear mode button to toggle between USB or optical input.

Outputs

Element IV provides headphone output and RCA Preamp Outputs. Press the tactile Volume knob button to toggle between output modes. Only one output is active at a time. Volume is adjustable in either mode, and saved to memory for easy transitions. Pressing an input or output button displays the current mode on the screen.



USB Cables

Element IV ships with a 3ft (1m) USB Type C to A cable equipped with a ferrite core for optimal jitter and noise rejection. Longer cables can be used, but may increase jitter or compromise connection quality. If you must use a longer USB cable, we strongly encourage the following practices:

1. Transfer the detachable ferrite from your JDS Labs cable to your new cable. Use the exact same position on the new cable.
2. For runs longer than 6ft, use a USB hub or Synapse and two shorter cables (one 6ft cable to the hub, and the other 6ft cable to your DAC).

Listening Tips

Set sampling rate to the highest integer multiple of your music collection. For example, use 192kHz for a collection of 48k and 192k audio files. Common streaming services and games tend to use 48kHz audio. Alternatively, you may install the optional XMOS drivers in Win 10/11 and use an ASIO capable app to achieve bitperfect sampling rate changes. Active sampling rate is displayed on Element IV's screen. By default, Element IV disables host operating volume controls for maximum fidelity and plentiful D/A headroom. Note: Win 10/11 may still permit system level volume adjustments.

Element IV can amplify headphones to dangerously loud audio. Listen safely to conserve your hearing:
www.hearingloss.org

Operating Care

- Element IV uses a high current power supply and runs warm to the touch. Avoid covering the top and sides
- Element IV can be safely powered on 24/7, or you may power down.
- To ensure an optimal noise floor, always position headphone amplifiers as far away as possible from WiFi routers

SETUP

Computer Setup

Element IV requires no drivers in Windows 10/11, macOS, Linux, and modern versions of iOS or Android. You may optionally download drivers for Windows at jdslabs.com/drivers to enable all bitrates, adjust Buffer Length (latency), and to enable an ASIO endpoint. Be sure to select your new DAC as the default playback device:

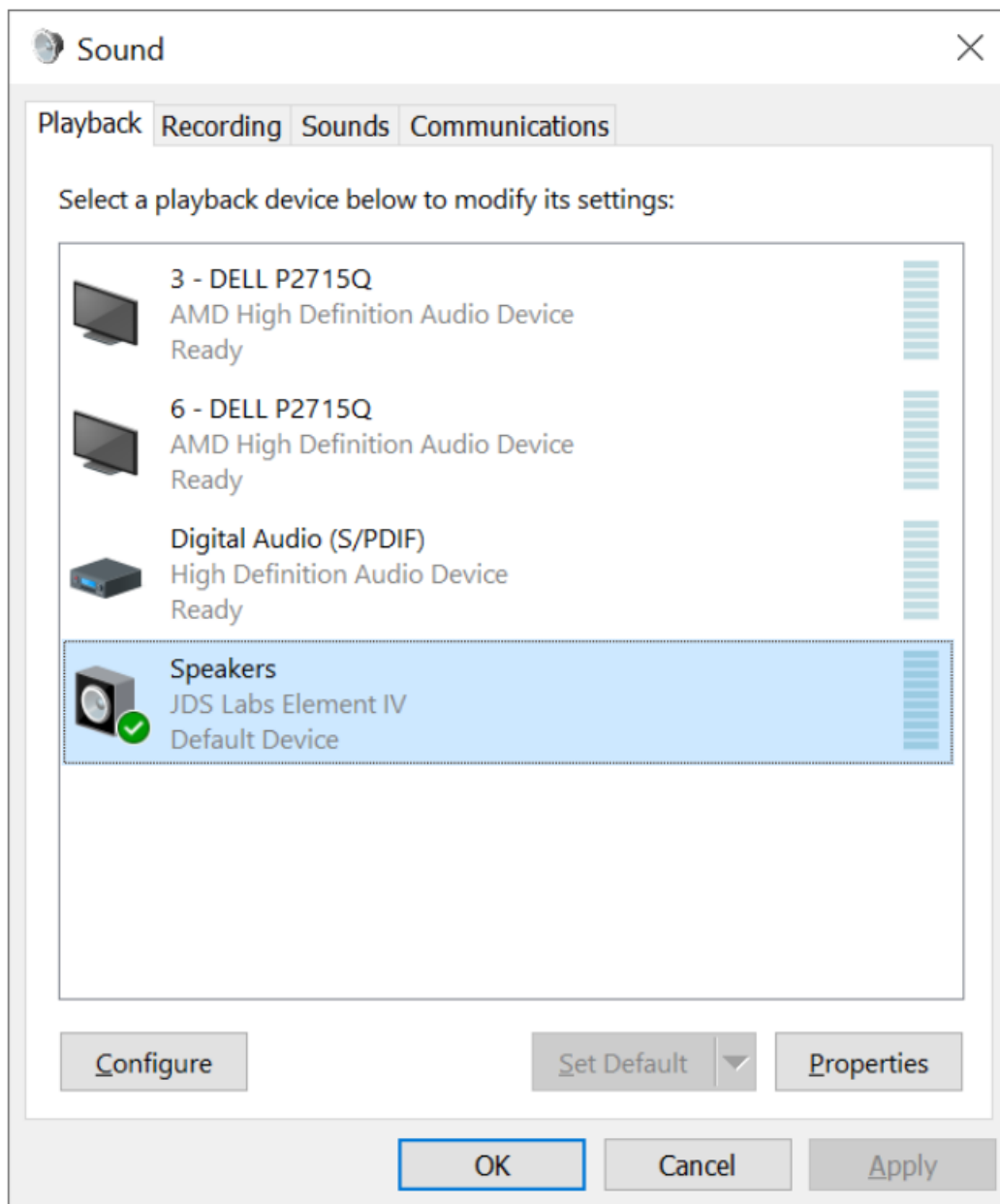
Windows 10/11

1. Right click the volume icon in your taskbar: Open Sound Setting → Sound Control Panel
2. Click on JDS Labs Element IV and then choose Set Default.

Please refer to Listening Tips on previous page for optimal settings. For Windows 11, we recommend setting sampling rate to 192 kHz

macOS

Ensure JDS Labs Element IV is selected from Audio Devices.



Troubleshooting

Does not turn on

Cause: Missing, damaged, or loose power adapter.

Solution: Please see jdslabs.com/troubleshooting

LEDs flash repeatedly when turned on

Cause: Flashing LEDs indicate no response from the main processor despite internal reset attempts. This may be caused by catastrophic power or water damage, for example.

Solution: Please turn Element IV off, and then back on. If the behavior persists, please reach out to jdslabs.com/support

No response from the volume knob or buttons

Cause: Extreme local interference or severe USB communication errors

Solution: Turn Element IV off, and then back on. If the behavior occurs intermittently, try repositioning the amplifier further away from large monitors; try another USB cable and another USB port; avoid docks; set to Headphone Mode and/or power down when away.

DAC restarts during use

Cause: Element IV is designed to detect and recover from power & communication errors.

Solution: Ensure clean power is provided. Avoid placing near sources of excessive RF noise such as WiFi routers or the power entry point of large monitors; try another USB cable.

No sound from the headphones

Cause: Wrong mode or incorrect connectivity setup.

Solution: Please see the Connectivity section. Double-check all cabling and volume levels.

Power Adapters

ATTENTION: Incorrect power adapters can result in capacitor explosion hazards and device damage. Only use the power adapter included with your Element:

- Type: AC-to-AC Transformer Full Load Voltage: 17 VAC
- Current: Minimum 1400mA Connector: 2.1×5.5 mm (ID x OD)

CE Application for Council Directives 2004/108/EC, 2006/95/EC, 2002/95/ EC.Conformity declared for EN55022:2011, EN611000-3-2, EN61000-3-3, EN55024-2

FC This equipment has been tested and found to comply with the limits for a Class B digital device, pursuant to part 15 of the FCC Rules.

SUPPORT

ONLINE

- CONTACT@JDSLABS.COM
- JDSLABS.COM/SUPPORT


BY PHONE

- 3 1 4 – 2 5 2 – 0 9 3 6
- 9 :00 AM – 5P MCST, MONDAY THROUGH FRIDAY





BY MAIL

- 909 N BLUFF RD COLLINSVILLE, IL 62234 UNITED STATES

Documents / Resources

	JDSLABS ELEMENT IV Shop JDS Labs [pdf] Owner's Manual ELEMENT IV Shop JDS Labs, ELEMENT IV, Shop JDS Labs, JDS Labs, Labs
---	--

References

-  [JDS Labs Core™ BETA](#)
-  [JDS Labs - Makers of Element and Atom Headphone Amps + DACs](#)
-  [Drivers & Firmware _JDS Labs Customer Support](#)
-  [Hearing Loss Association of America](#)

- [User Manual](#)

Manuals+, Privacy Policy

This website is an independent publication and is neither affiliated with nor endorsed by any of the trademark owners. The "Bluetooth®" word mark and logos are registered trademarks owned by Bluetooth SIG, Inc. The "Wi-Fi®" word mark and logos are registered trademarks owned by the Wi-Fi Alliance. Any use of these marks on this website does not imply any affiliation with or endorsement.