



## jcm technology IP65 KEEpad Motion Transmitter User Guide

[Home](#) » [jcm technology](#) » jcm technology IP65 KEEpad Motion Transmitter User Guide 

### jcm technology IP65 KEEpad Motion Transmitter User Guide



#### Contents

- [1 Specifications](#)
- [2 Configure password](#)
- [3 Problem solving](#)
- [4 Normal use](#)
- [5 Batteries replacement](#)
- [6 EC Declarations of Conformity](#)
- [7 Documents / Resources](#)
  - [7.1 References](#)
- [8 Related Posts](#)

### Specifications

- MOTION keyboard, 3 channels 868 MHz ·

- IP65
- 3 batteries AAA 1,5V
- Autonomy: 2 years/6000 activations
- -20 / +55 °C

## Configure password

Wake up



Enter configuration mode



Choose channel (1,2 or 3)



Enter current password (4-8 digits + OK)



Enter new password (4-8 digits + OK)



If you do not remember the current password, you must reset the device (see the installer guide)

## Problem solving

See our website for troubleshooting: [www.jcm-tech.com/JCM/keepad-keepush/](http://www.jcm-tech.com/JCM/keepad-keepush/)

	MY PASSWORD	BY DEFAULT
CHANNEL 1		1111
CHANNEL 2		2222
CHANNEL 3		3333

## Normal use

Wake up the device



Enter password + OK



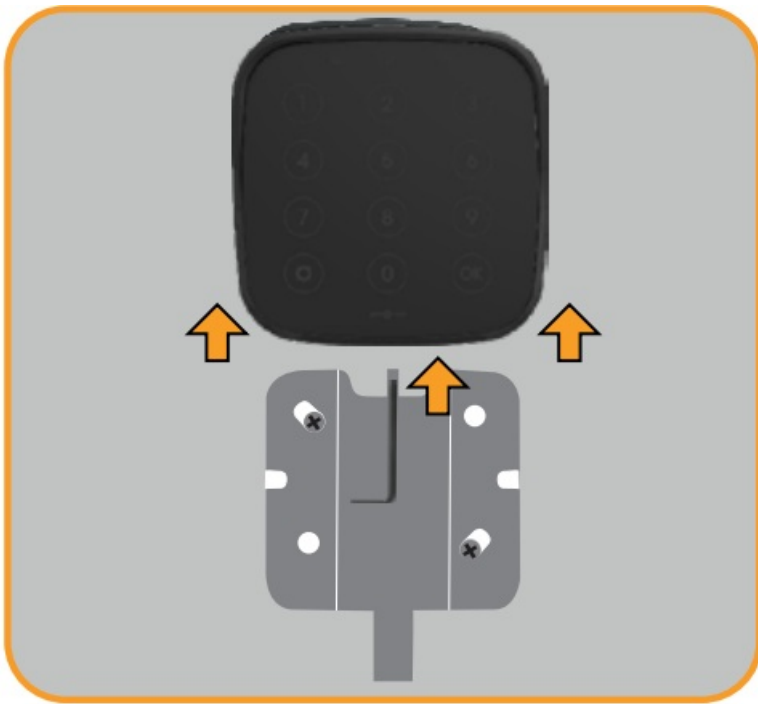
After 3 wrong trials the system is locked for 2 minutes.



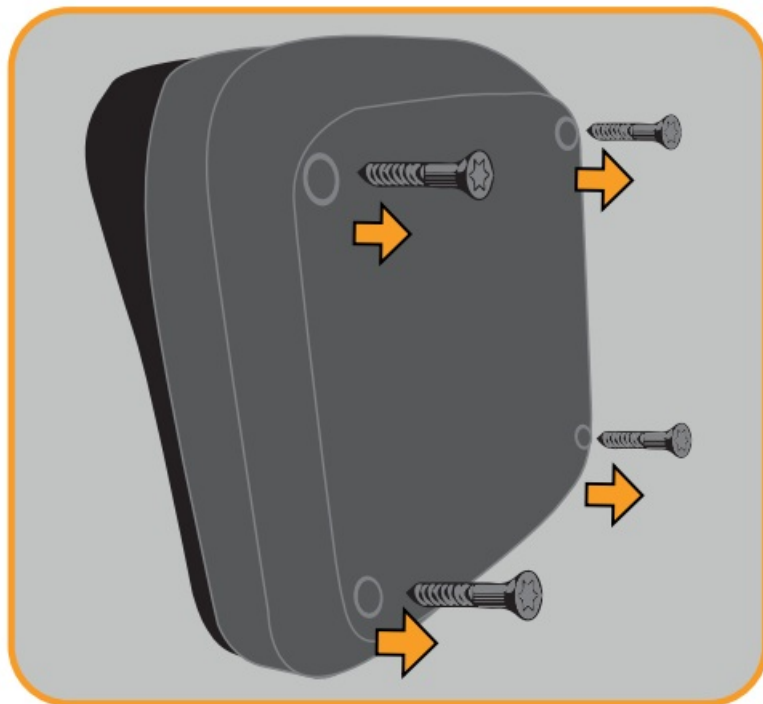
The anti-spy feature allows you to press random numbers before entering the password: the keypad only uses the last digits

## Batteries replacement

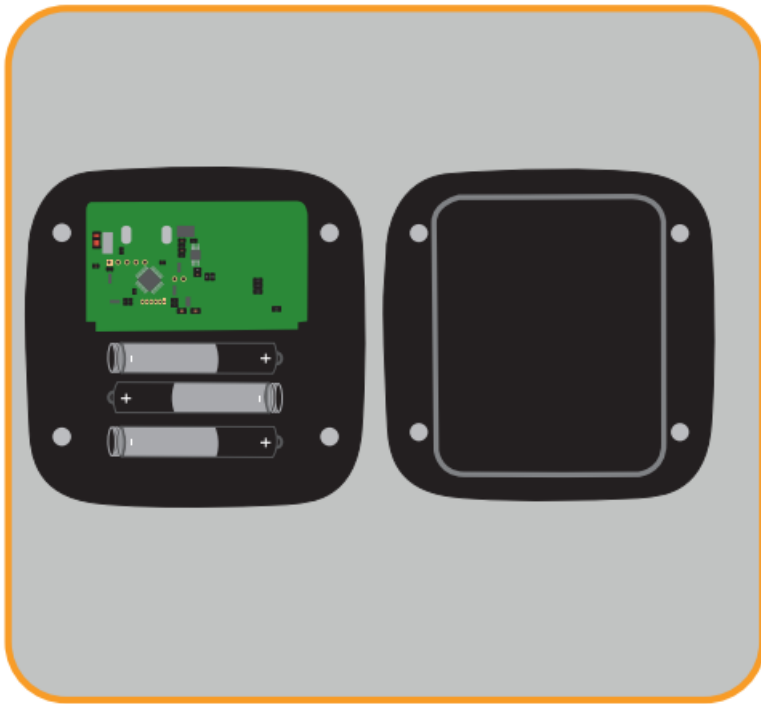
Unscrew device and slide on wall support



Unscrew back cover



Replace batteries (3 x 1,5Vdc AAA type)



⚠ When batteries are near to the end of its useful life time, the indicator flashes.


## EC Declarations of Conformity

The manufacturer JCM TECHNOLOGIES declares that the product KEEPAD complies with the relevant fundamental requirements of the RED Directive 2014/53/EU and of the RoHS Directive 2011/65/EU.

JCM TECHNOLOGIES, SA COSTA D'EN PARATGE, 6B – 08500 VIC (BARCELONA) SPAIN

See web [www.jcm-tech.com/declarations/](http://www.jcm-tech.com/declarations/)  

## Documents / Resources

	<p><a href="#">jcm technology IP65 KEEpad Motion Transmitter</a> [pdf] User Guide IP65 KEEpad Motion Transmitter, IP65, KEEpad, Motion Transmitter</p>
---	--

## References

-  [Declarations | JCM Technologies](#)
-  [KEEpad · KEEpush | Motion Transmitters JCM Technologies](#)