



JCHR35W1B 6-Channel LCD Remote Controller with Timer User Manual

[Home](#) » [JCHR](#) » JCHR35W1B 6-Channel LCD Remote Controller with Timer User Manual 

Contents

- [1 JCHR35W1B 6-Channel LCD Remote Controller with Timer](#)
- [2 Product Information](#)
- [3 Product Info](#)
- [4 Models & Parameters](#)
- [5 Instructions](#)
- [6 Documents / Resources](#)



JCHR35W1B 6-Channel LCD Remote Controller with Timer

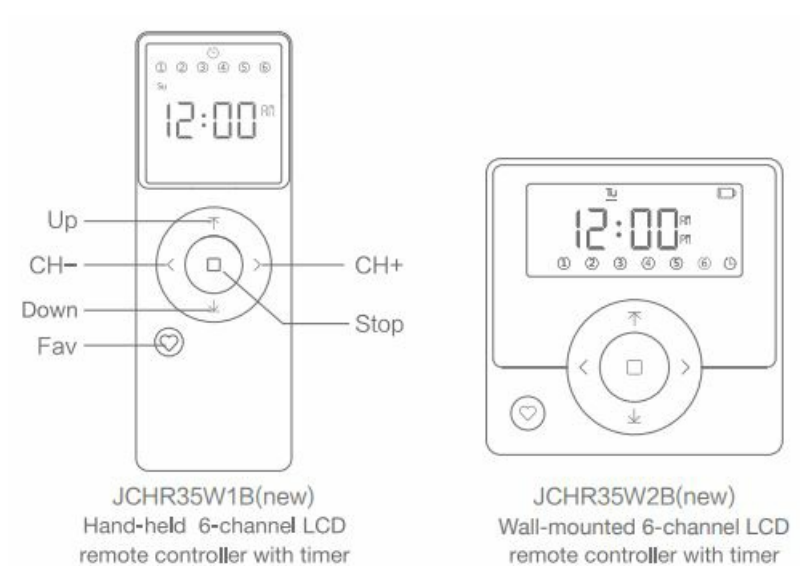


Product Information

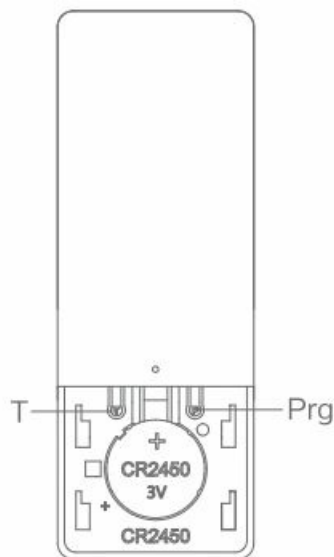
- **Product Name:** JCHR35W1B/W2B(new)
- **Model:** JCHR35W1B(new)
- **Features:** Wall-mounted 6-channel LCD

Product Info

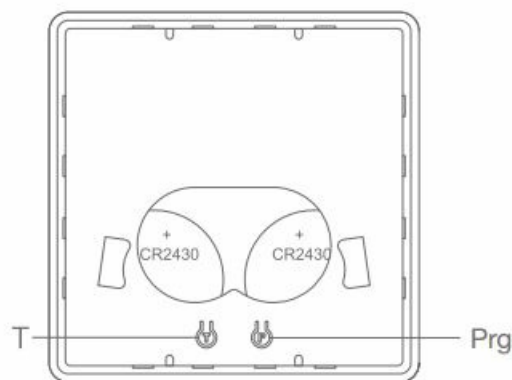
Front



Back



JCHR35W1B(new)
Hand-held 6-channel LCD
remote controller with timer




JCHR35W2B(new)
Wall-mounted 6-channel LCD
remote controller with timer

Models & Parameters

(more info please refer to the nameplate)

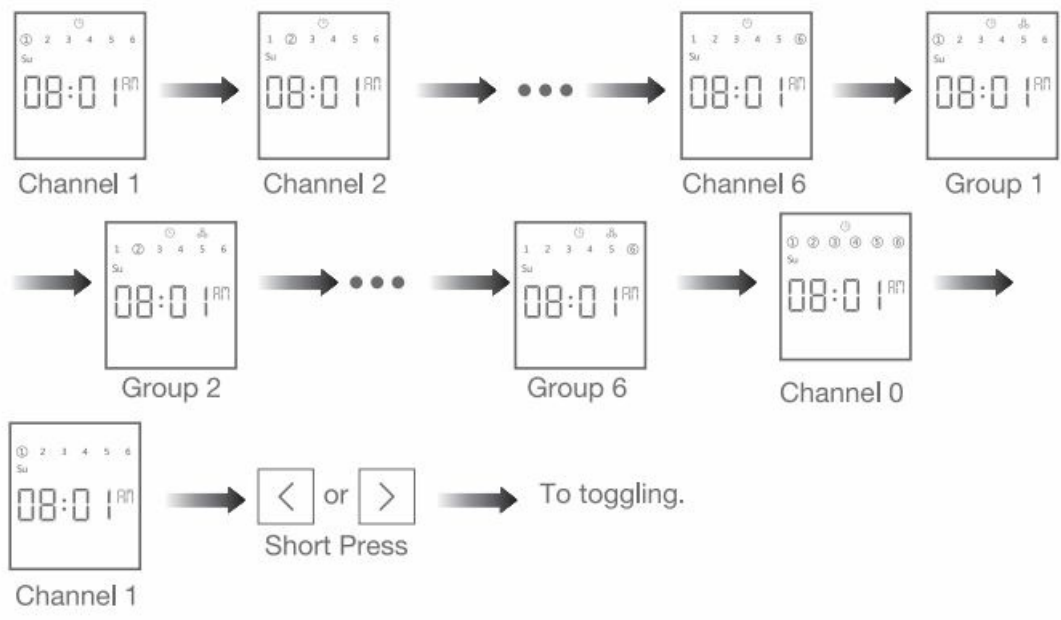
Electrical Specification	Standard	
Battery Type	Hand-held:CR2450*3V*1	Wall-mounted: CR2430*3V*2
Working Temperature	-10℃-50℃	
Radio Frequency	433.92M±100KHz	
Transmit Distance	>=30m indoor	

Caution!

1. The transmitter should not be exposed to moisture or impact, so as not to affect its life
2. During use, when the remote control distance is significantly shorter or less sensitive, please check whether the battery needs to be replaced.
3. When the battery voltage is too low, the LED screen will show a low voltage prompt, prompting to replace the battery .
4. Please properly dispose of used batteries according to the local garbage classification and recycling policy.

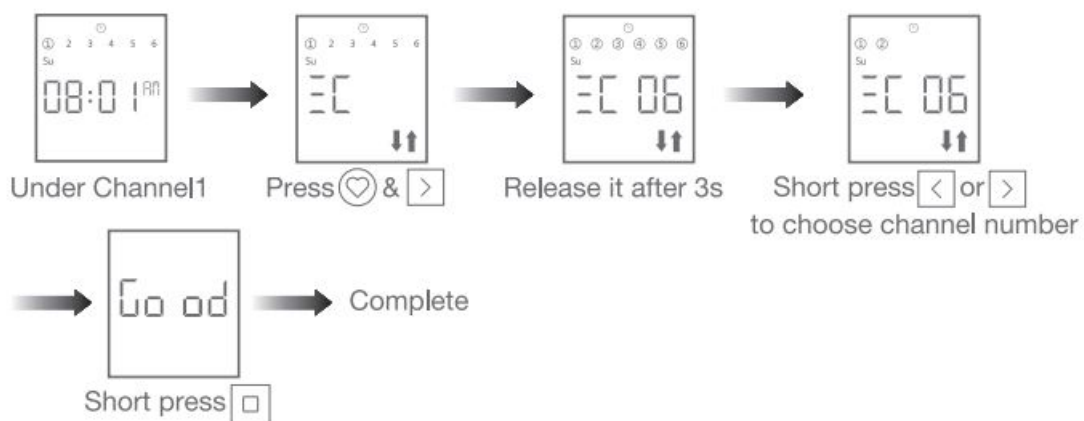
Instructions

a. Channels & Groups Toggling



NOTE: Channel 0 is where all channels are shown as steady-lit.

b. Number of Channels Setting



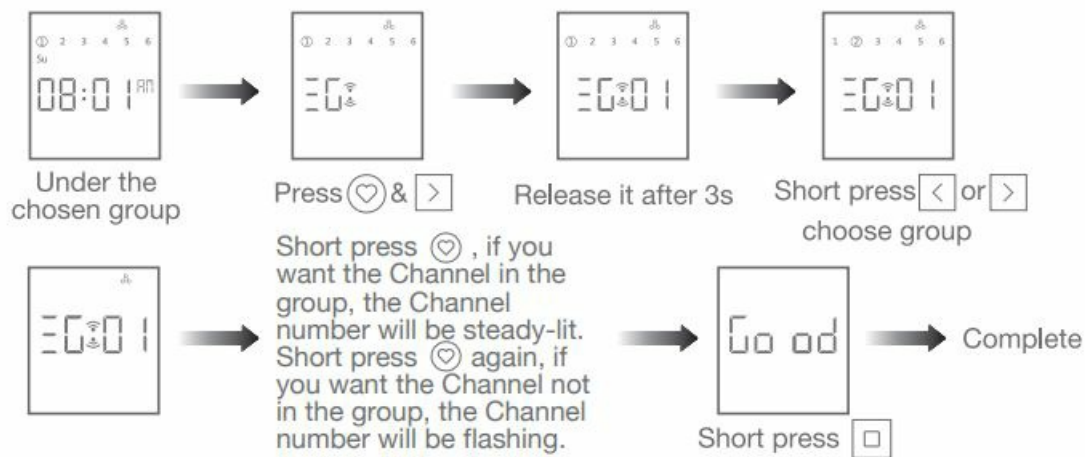
Note: Max & Min number is 6&1 when it's set under channel 1-6.

c. Number of Groups Setting



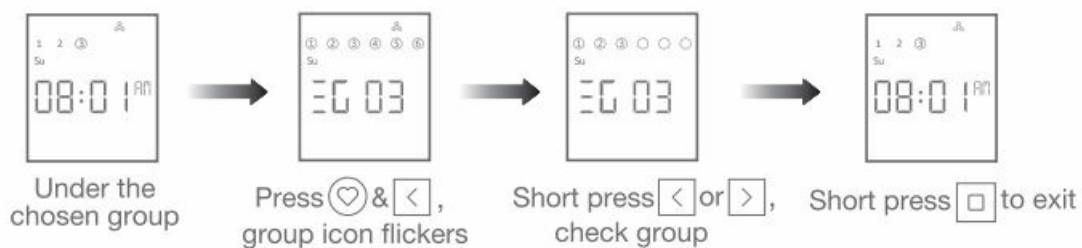
Note: Max & Min number is 6&1 when it's set under channel 0.

d. Channel in Group Setting

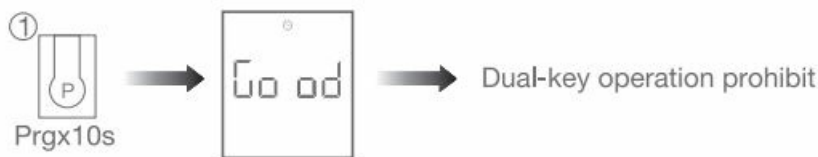


Note: Channel in groups setting is under GROUP 1-6.

e. Check the Channels in Groups



f. Prohibit Dual-key Operation

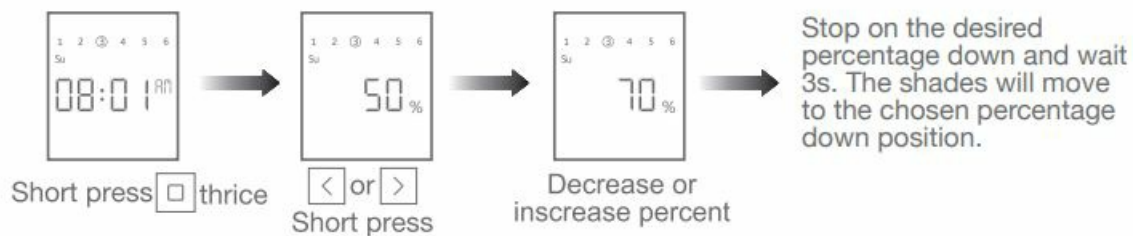


② Repeat the above, dual-key operation activated

Note: When dual-key operation prohibited, these programming setting functions are not allowed.

Note: When dual key operation prohibited, these programming setting functions are not allowed.

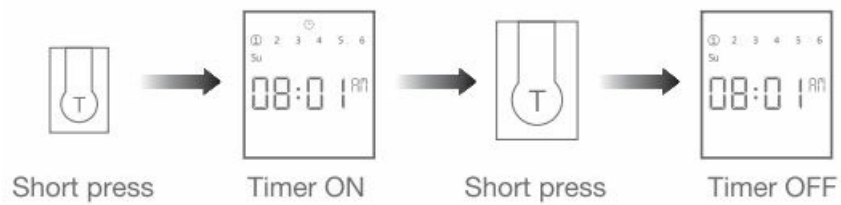
g. Position Percent Setting



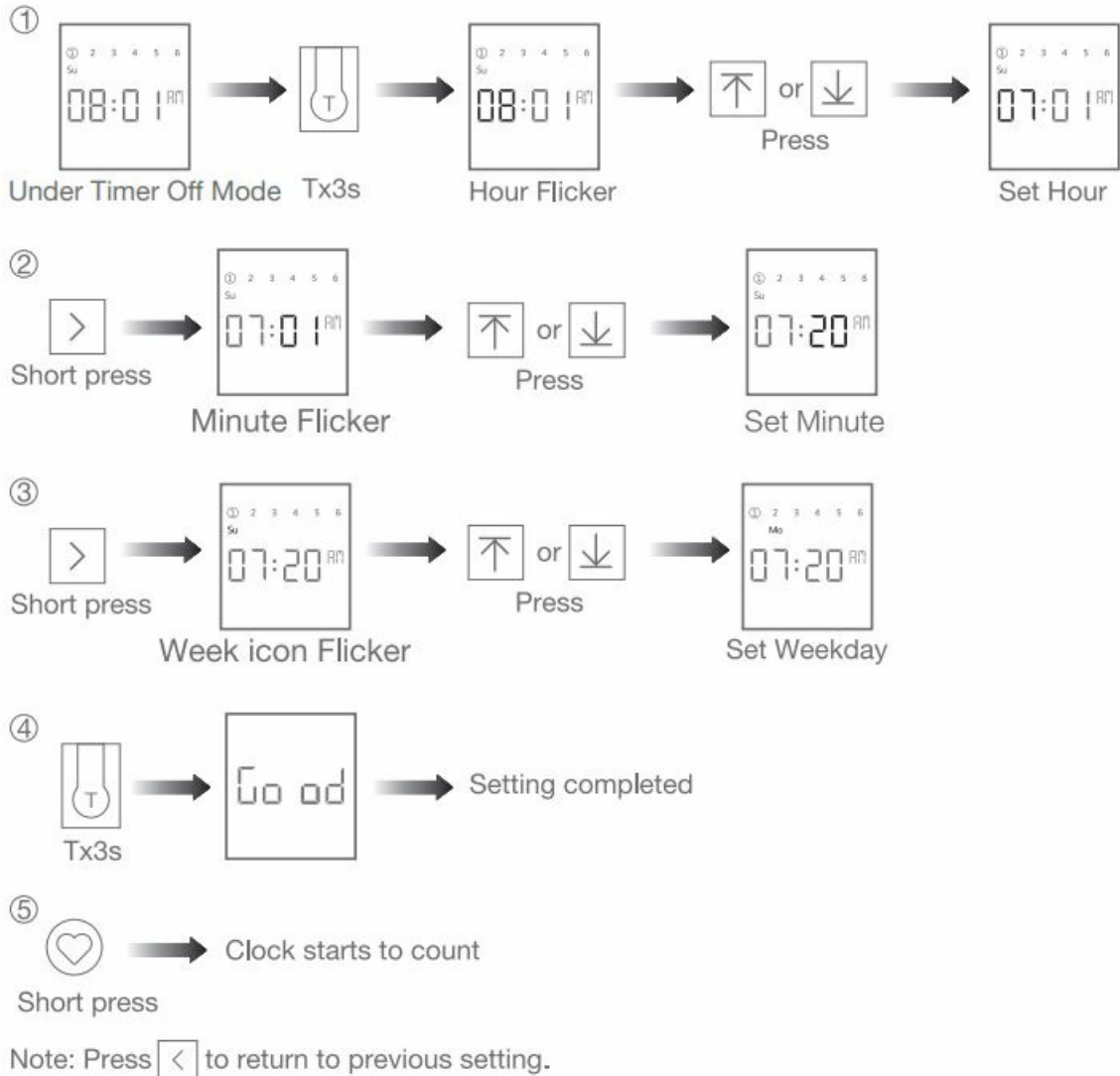
Note: All the shades under same group will run to same position after percent setting.

Note: All the shades under same group will run to same position after percent setting.

h. Timer Function On/Off

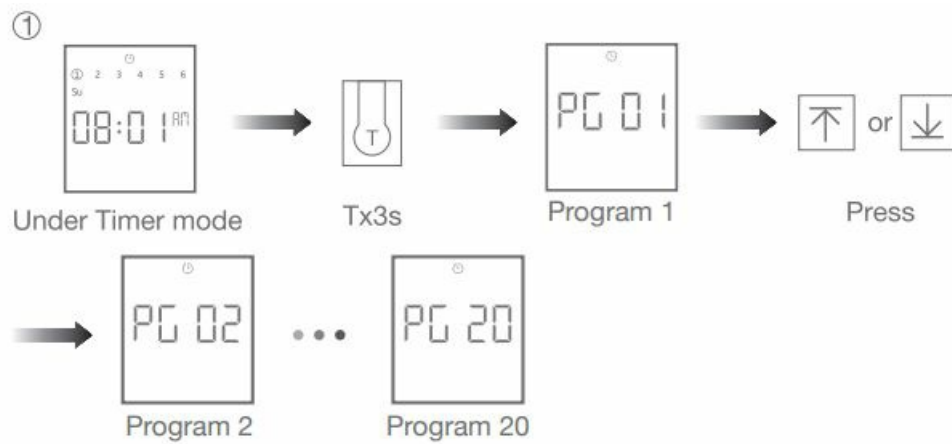


I. Local Time Setting



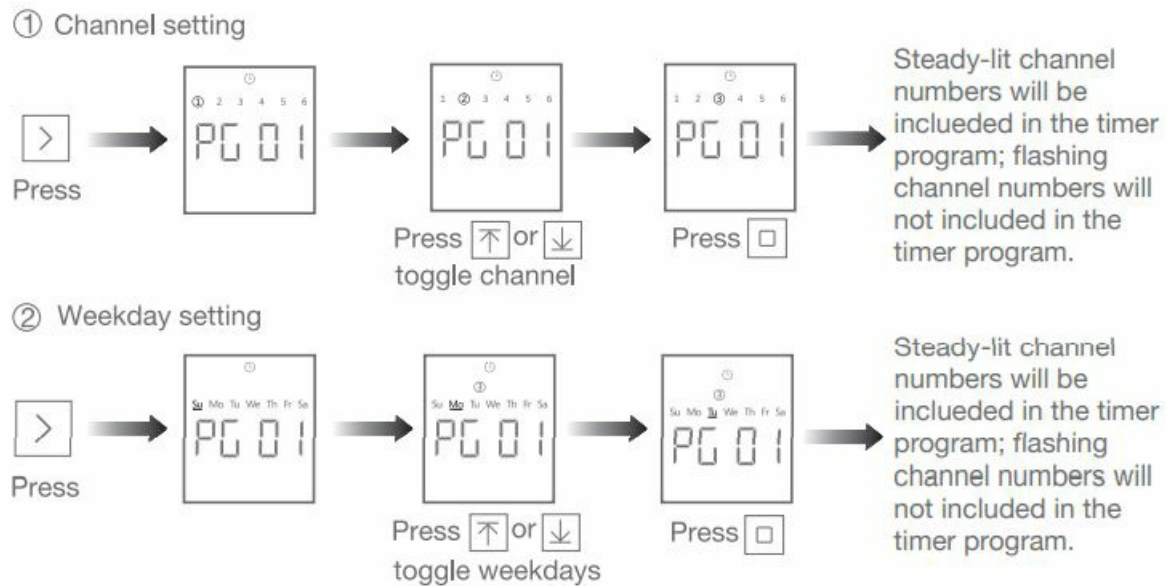
j.Timer Control

1. Enter program mode

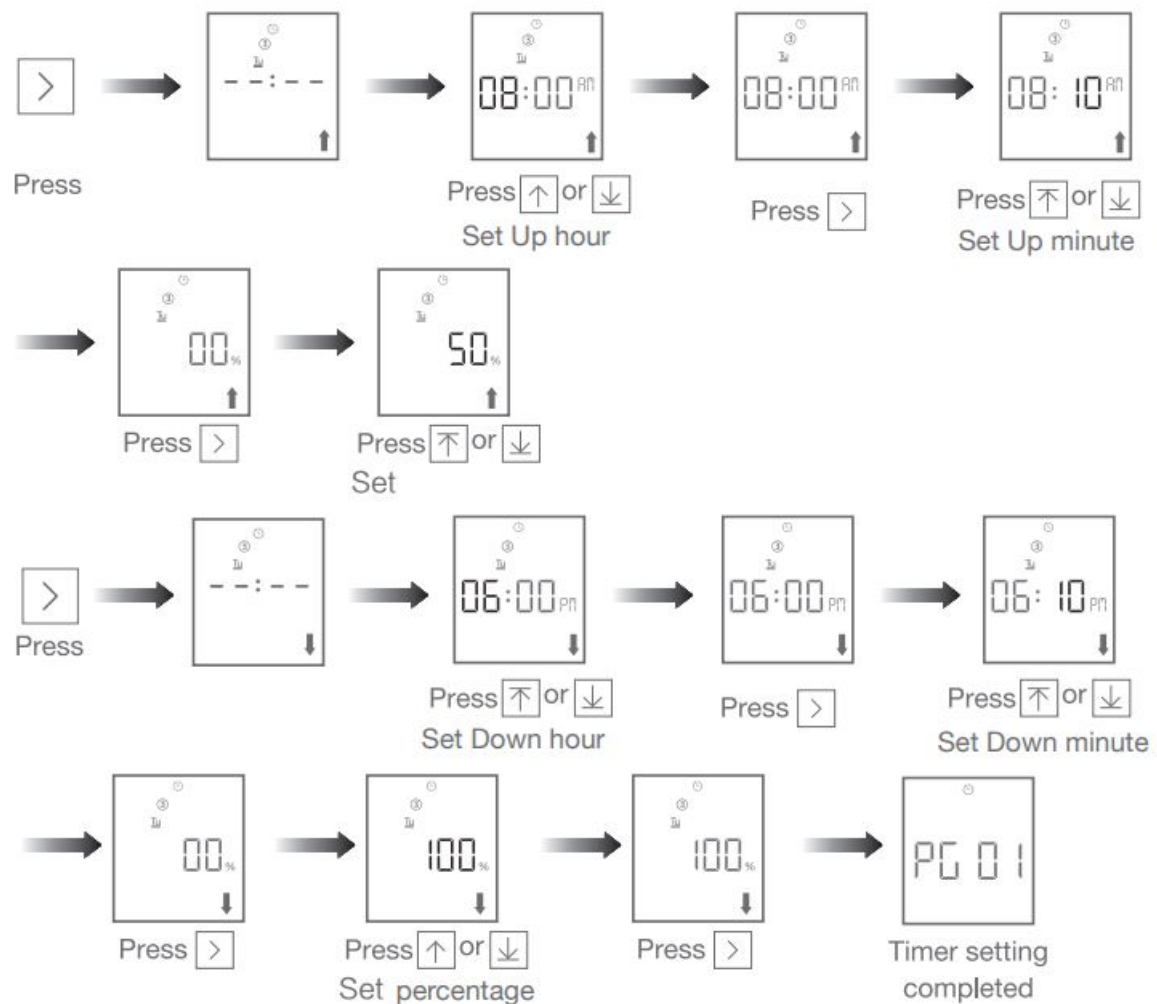


Note: 1. Press Up&Stop, LCD shown CL00, means current data cleared
 2. Press Down&Stop, LCD shown CP01, means first data set copied to current set

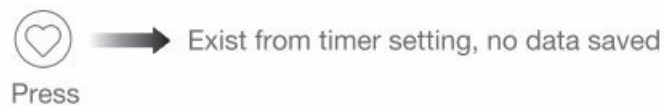
2. Timer setting



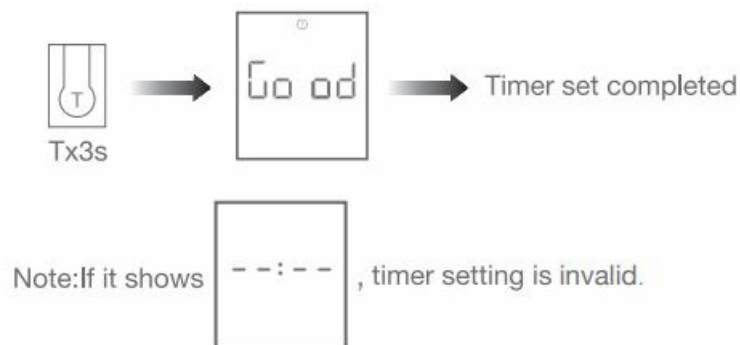
3. Timer setting



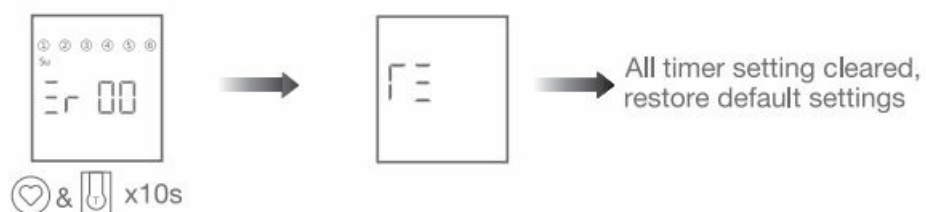
4. To exist timer setting



5. To save timer setting

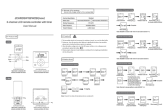


k. Default Setting



I. For other operations, pls refer to the motor operation instruction

Documents / Resources

	<p>JCHR JCHR35W1B 6-Channel LCD Remote Controller with Timer [pdf] User Manual JCHR35W1B, JCHR35W2B, JCHR35W1B 6-Channel LCD Remote Controller with Timer, JCHR35W1B, 6-Channel LCD Remote Controller with Timer, 6-Channel LCD Remote Controller, LCD Remote Controller, Remote Controller, Controller</p>
---	--

[Manuals+](#).