



Contents [[hide](#)]

[1 JBL STAGE 2 Series 2-Way Component Speakers](#)

[2 INTRODUCTION](#)

[3 Included Items](#)

[4 Assembly](#)

[5 Installing the Optional Spikes](#)

[6 Determine Speaker Location](#)

[7 Wall Mounting](#)

[8 240H Setup and Placement](#)

[9 Surround Channel Setup](#)

[10 Connections](#)

[11 Specifications](#)

[12 Customer Service](#)

[13 Documents / Resources](#)

[13.1 References](#)



JBL STAGE 2 Series 2-Way Component Speakers



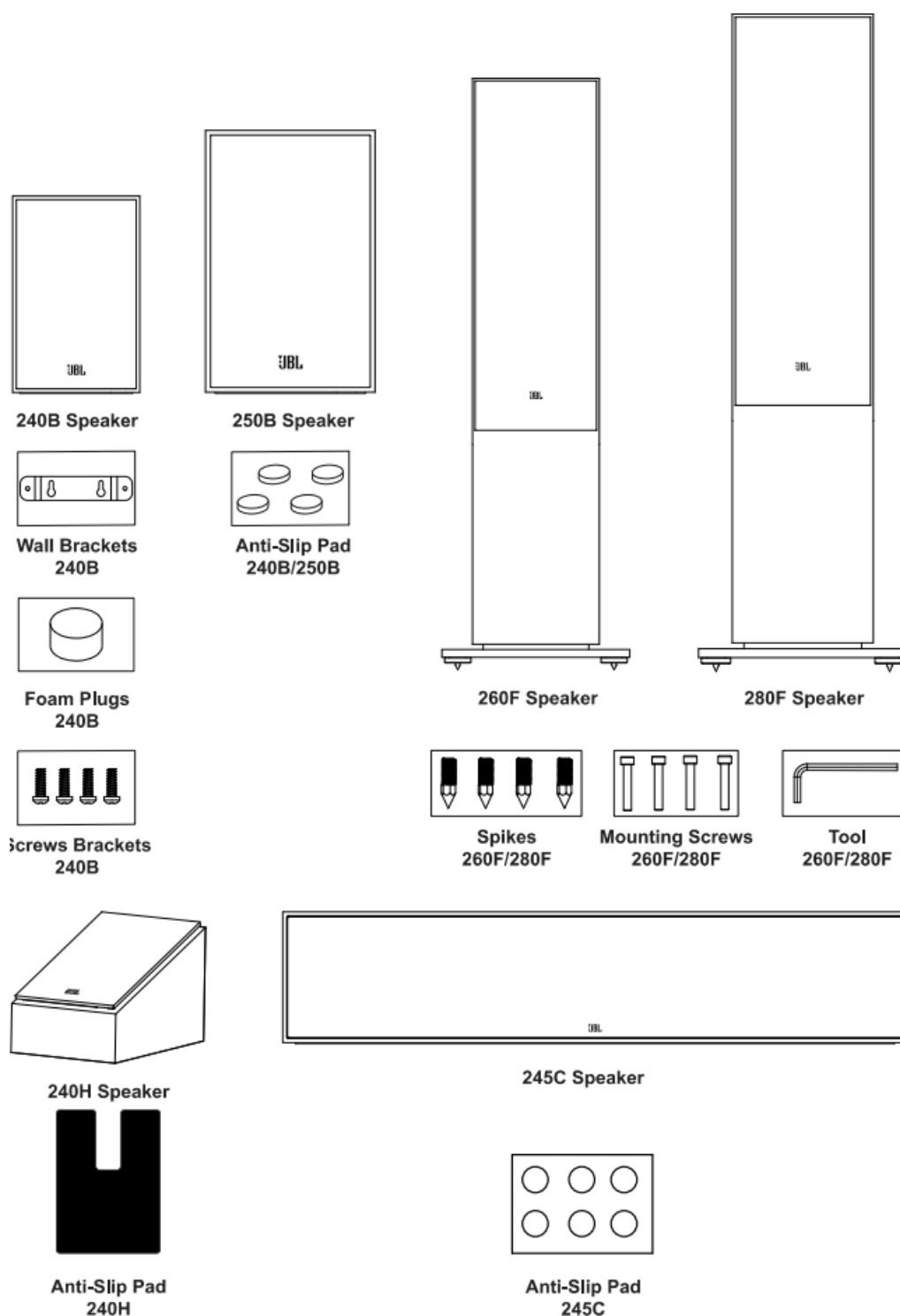
INTRODUCTION

Thank you for choosing JBL

- For more than 75 years, JBL has been providing audio equipment for concert halls, recording studios, and movie theatres around the world and has become the trusted choice of leading recording artists and sound engineers.
- The Stage 2 Series speakers deliver exceptional audio performance to today's music and movie enthusiasts.
- This Quick Start Guide will get you up and running quickly.
- For additional information on the operation of these products, please visit the JBL product page for access to the owner's manual at jbl.com/specialty-audio/
- Should further assistance be required, feel free to contact our Customer Support at the numbers below.

Included Items

Each box contains one or two loudspeakers, depending on the model.



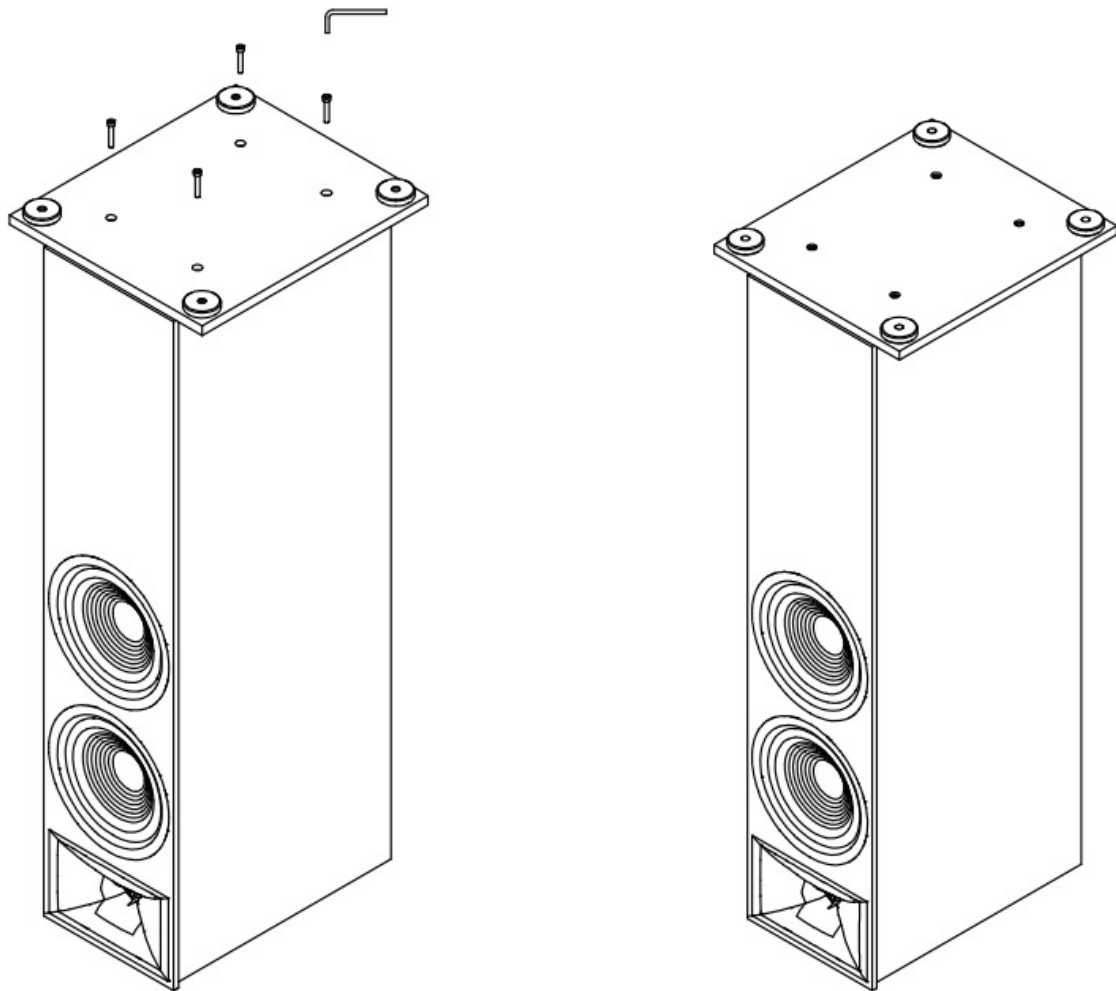
- If you suspect that there has been shipping damage or missing any of the reference contents are missing, report it immediately to your dealer or contact our Customer Support at the telephone number referenced in the opening introduction.

Assembly

280F/260F

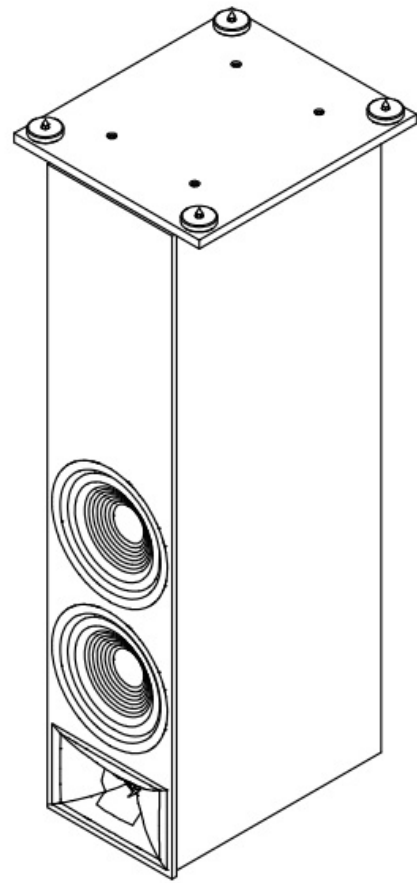
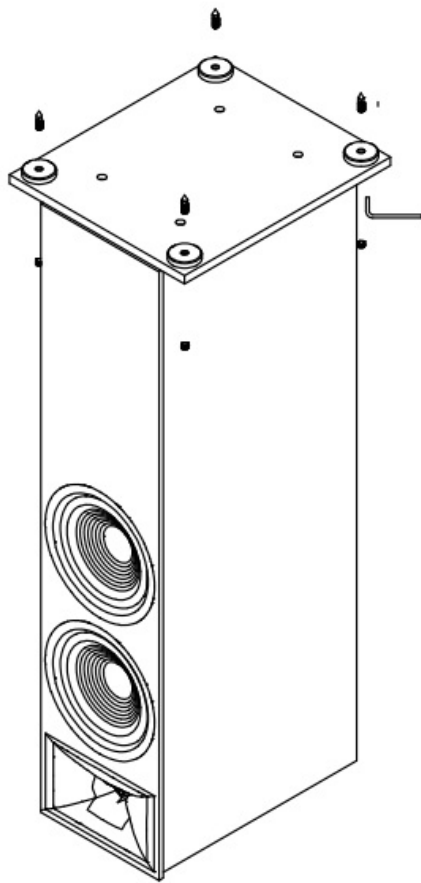
1. Remove the box containing the plinth (base), parts and accessories.
2. On a clean, dry surface, turn the speaker upside down (with the tweeter at the bottom)

3. Align the plinth (base) with the screw holes located on the bottom of the speaker.
4. Using the 4 mounting screws and the provided tool attach the base to the speaker. Do not over-tighten.



Installing the Optional Spikes

1. Place the loudspeaker on its side on a soft surface.
2. Screw the spikes into the fittings on the bottom of the loudspeaker with the spikes facing down.
3. Spikes can be adjusted, and the speaker levelled from the top using the supplied tool.
4. Insert the decorative rubber covers into the top of the holes.

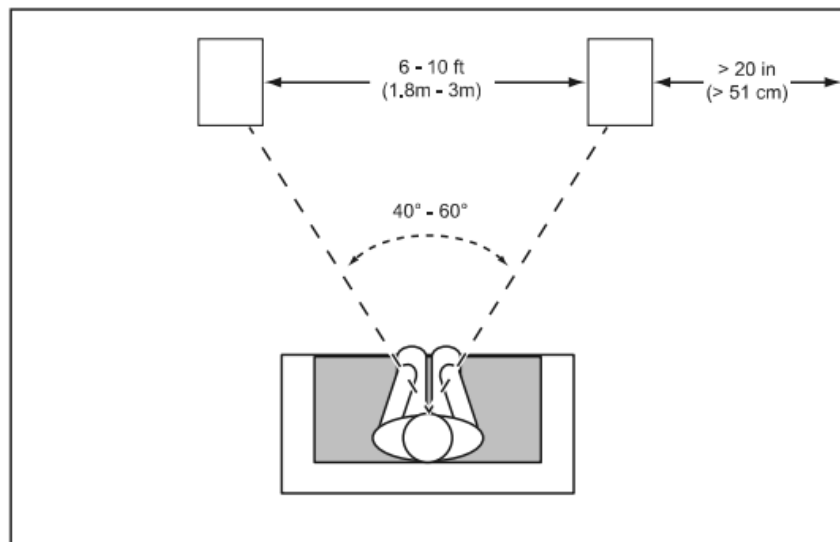


- **CAUTION:** Floorstanding (tower) loudspeakers have a high centre of gravity and may become unstable and tip over during earthquakes or if they are rocked, tipped, or improperly positioned.
- Consider anchoring these speakers to the wall behind them, using procedures and hardware customary for bookcases and wall units. You are responsible for the proper installation and selection of hardware.

Determine Speaker Location

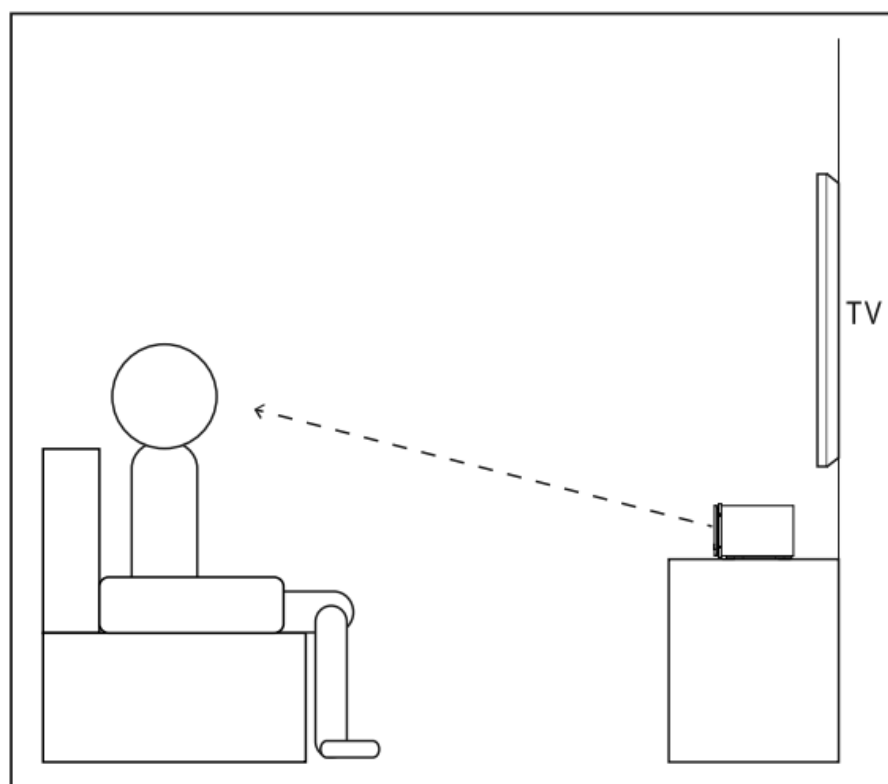
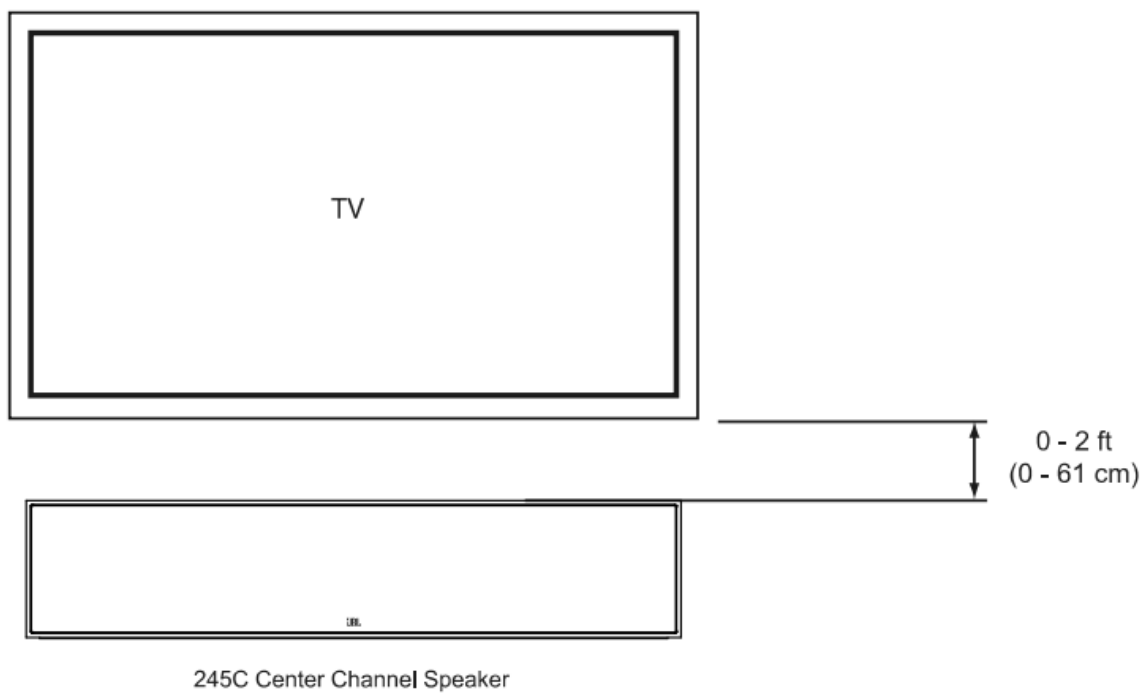
280f/260f Floorstanding Left and Right Channels

- For the best results, place the speakers 6 -10 feet (1.8m -3m) apart. Angling the speakers toward the listening position improves imaging.
- The speakers will produce the most accurate soundstage when the angle between the listener and the speakers is between 40 and 60 degrees.



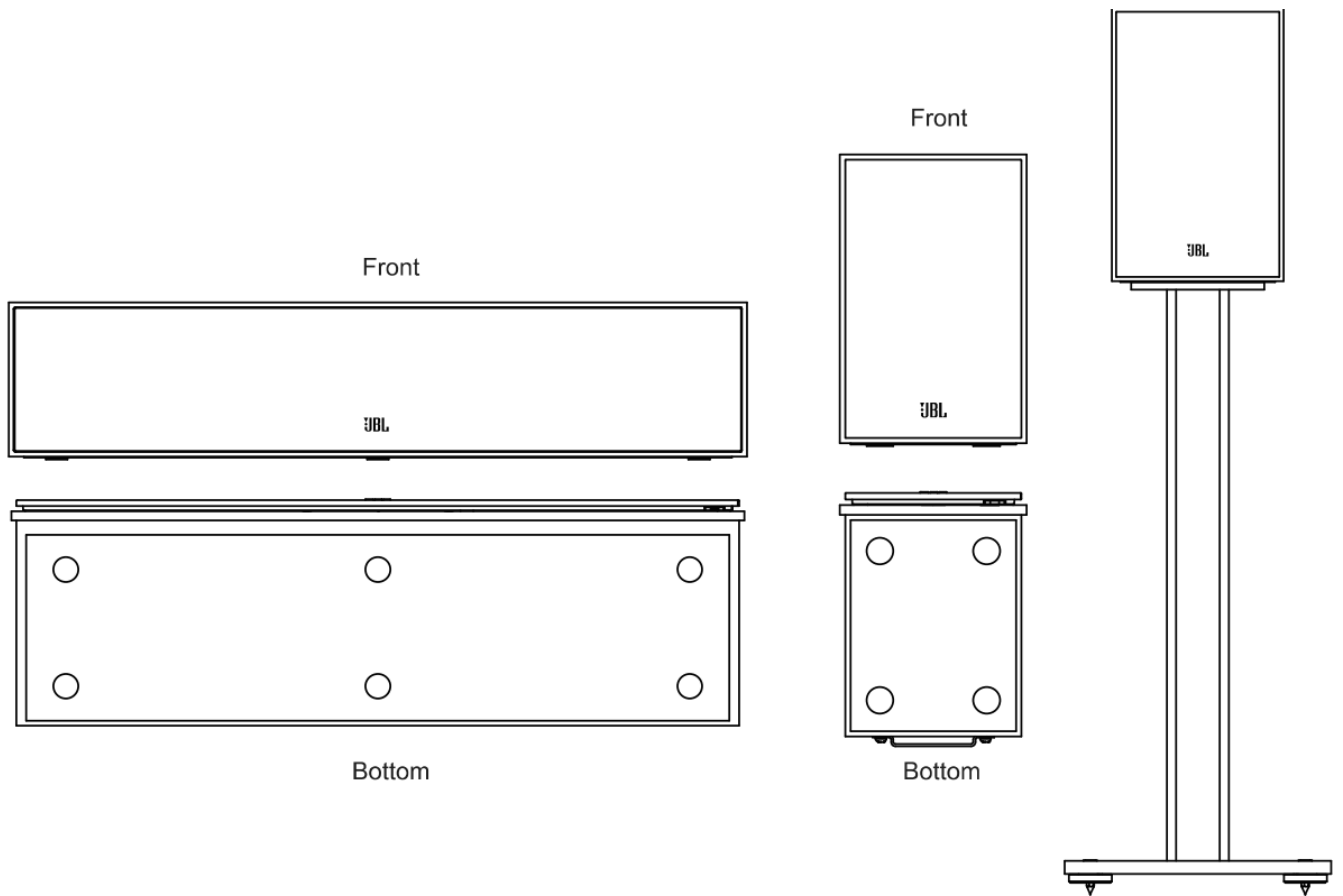
245C Centre Channel Speaker

- You should place the centre channel speaker directly below the centre of your display.



Anti-Slip Pad's

- Use the included Anti-Slip Pads on the 250B/240B and 245c to prevent them from moving. Optional Floorstands for the 250B/240B are available.



Wall Mounting

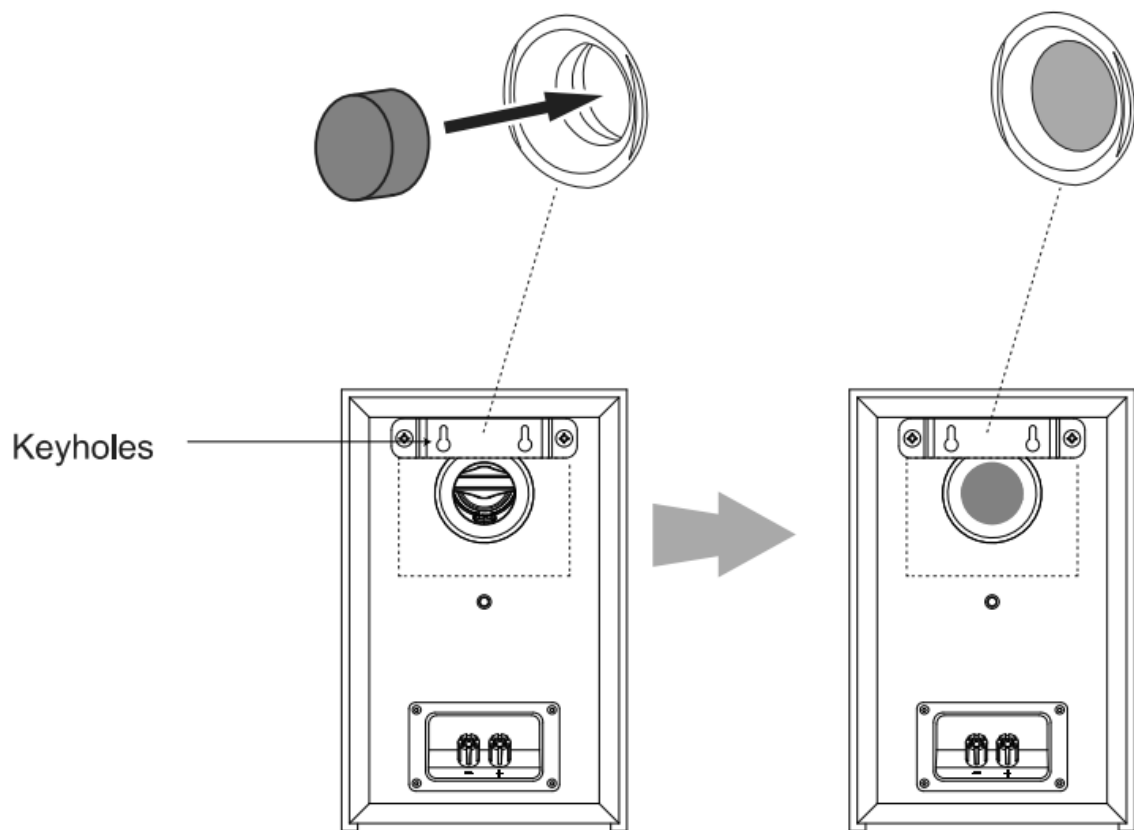
2408

- The 240B is designed with multiple mounting options. It can be used on a bookshelf, with the optional FL
- Floorstands, mounted to the wall using the included wall brackets and hardware or utilising the 1/2-20 threaded insert to use aftermarket mounting brackets.

When using the included wall bracket:

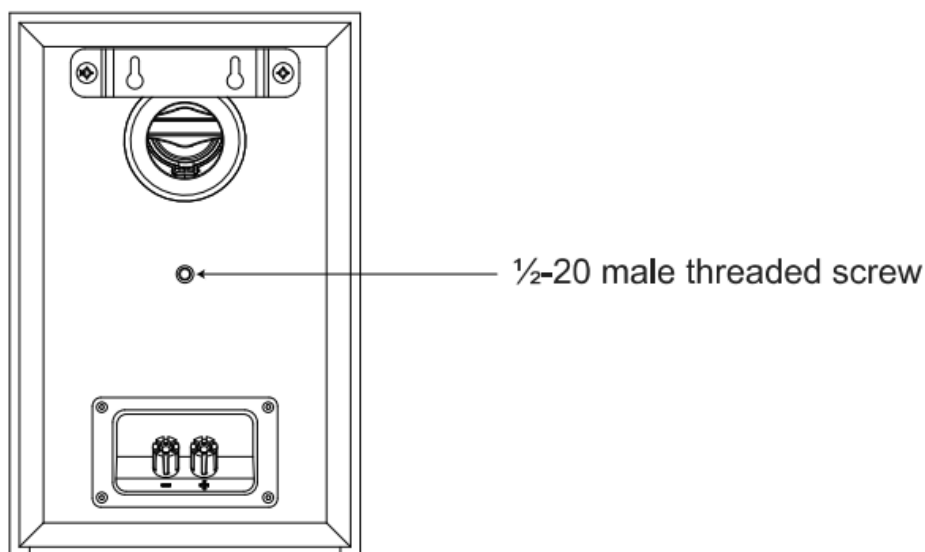
- Use the included wall brackets to mark the positions on the wall where you would like to place the mounting screws.
- Mount the include bracket to the rear of each speaker using the included hardware (2 screws).
- Each bracket has two keyholes on the back and will require 2 4.0 x 38mm wood screws or equivalent fastened to a wall stud. If a wall stud is not available install a wall anchor capable of supporting the weight of the speaker and can use 4.0 x 38mm screws.

- Insert the Foam Plug.



When using the aftermarket mounting bracket:

- The 2408 can be attached to any surface using an aftermarket bracket with a $\frac{1}{2}$ -20 male threaded screw.
- Insert the Foam Plug.

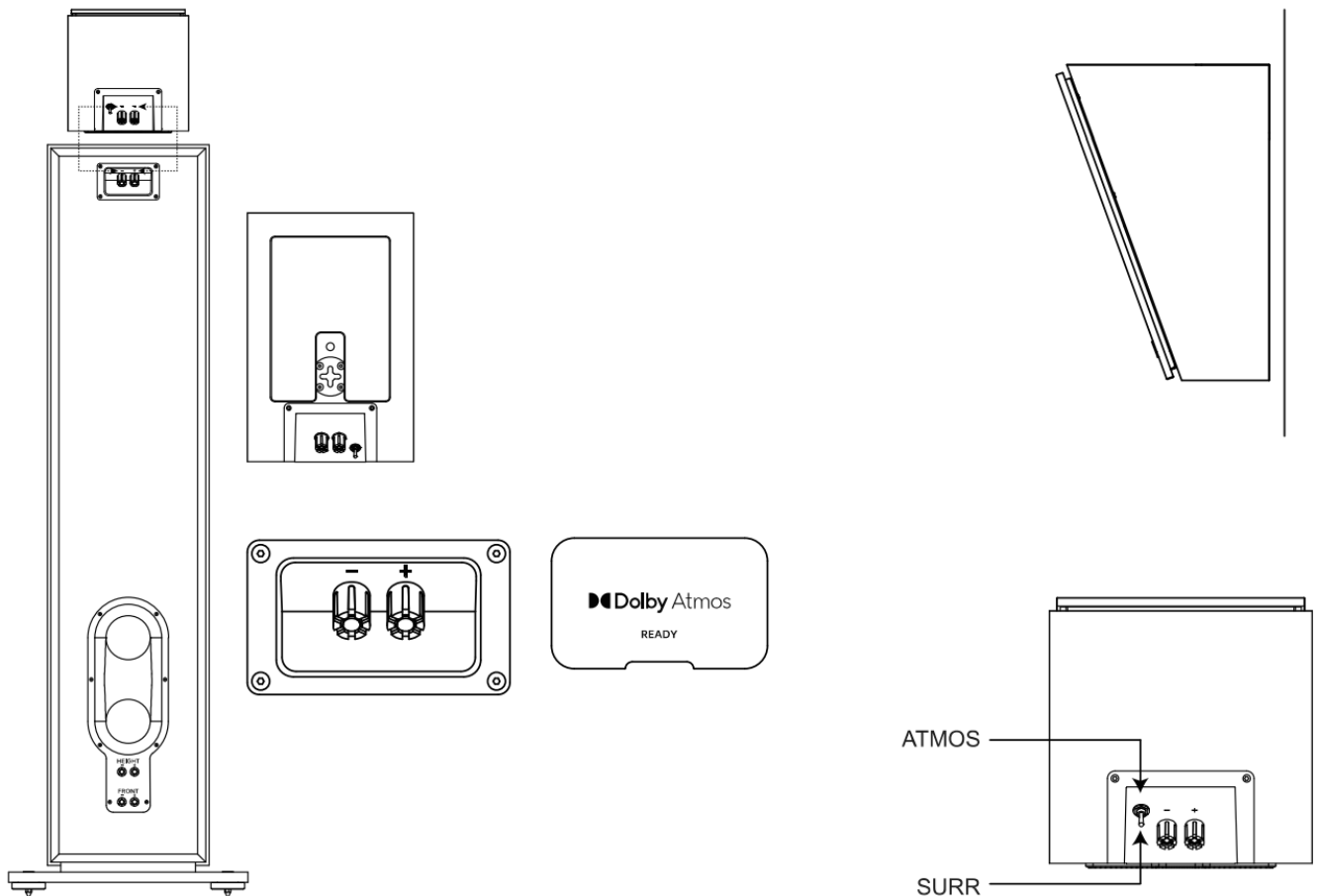


240H Setup and Placement

- The 240h is designed with multiple mounting and usage options. It can be used as an Atmos® add on module by placing it on top of the 280F or 260F and using the

connection terminals.

- Set the switch on the terminals to ATMOS. Remove the protective film on the anti-slip pad and attach it the bottom of the 240H with the pattern facing out to securely hold it in place.
- Please refer to the Dolby Atmos® speaker setup guides for detailed information.
<https://www.dolby.com/about/support/guide/speaker-setupguides/>
- The 240H can also be used as a surround or elevation speaker by setting the switch by the terminals to SUR. The 240H can be mounted to any surface using the key-hole slots or the 1/8"-20 threaded insert to use aftermarket mounting brackets.



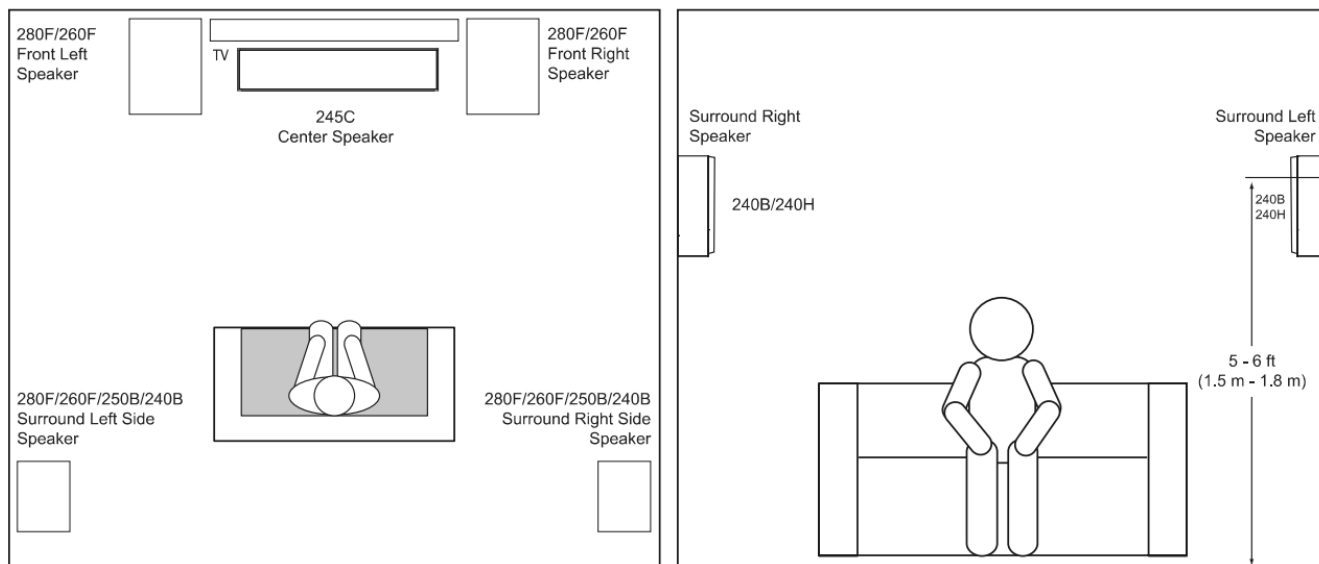
Surround Channel Setup

- When you use the 2408, 2508 or 240h speakers as surround-channel speakers in a multi-channel system, use the examples below for proper locations or visit <https://www.dolby.com/about/support/guide/speaker-setupguides/>

STAGE 2408-SURROUND CHANNELS (5.1-CHANNEL SYSTEM)

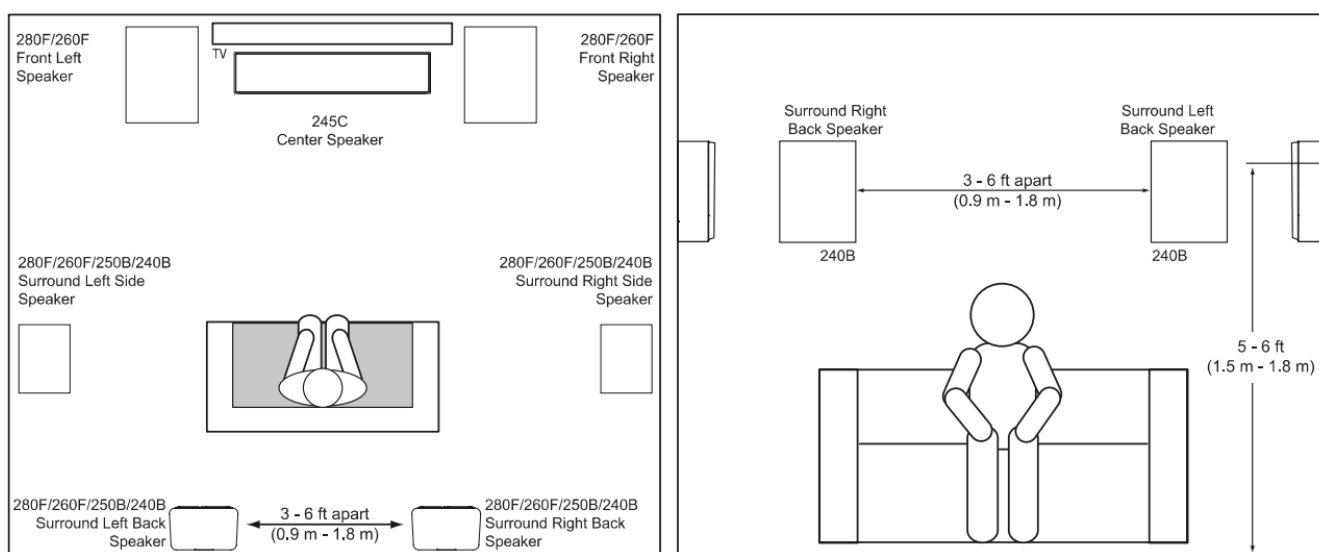
- When you use these speakers as surround-channel speakers in a 5.1-channel system, place them slightly behind the listening position, facing each other.

- Ideally, they should be 5-6 feet (1.5 m - 1.8 m) above the floor. An alternate location would be on a wall behind the listening position, facing forward.
- The surround speakers should not call attention to themselves while they're playing.
- Experiment with their placement until you hear a diffuse, ambient sound accompanying the sounds that you hear from the front left, front right and centre speakers.



STAGE 2408-SURROUND CHANNELS (7.1-CHANNEL SYSTEM)

- When you use these speakers as surround-channel speakers in a 7.1-channel system, place the surround side speakers directly to the sides of the listening position, at least 5-6 feet (1.5m -1.8m) above the floor.



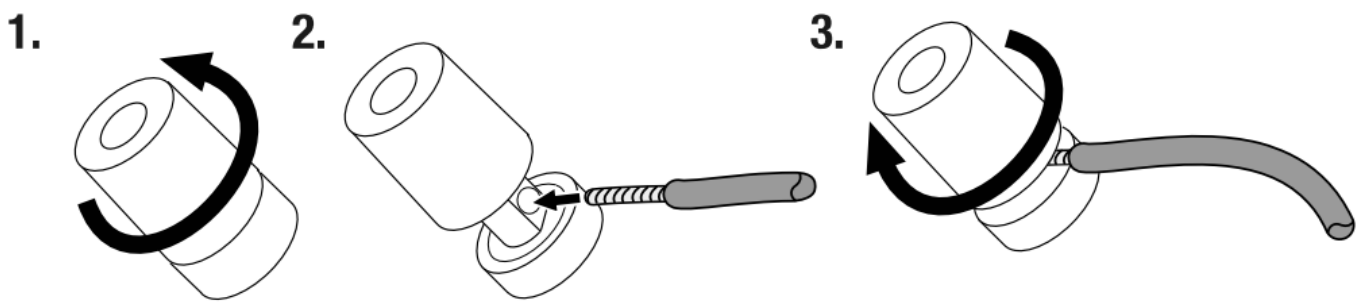
Connections

- **CAUTION:** Make sure that all the system's electrical components are turned OFF (and

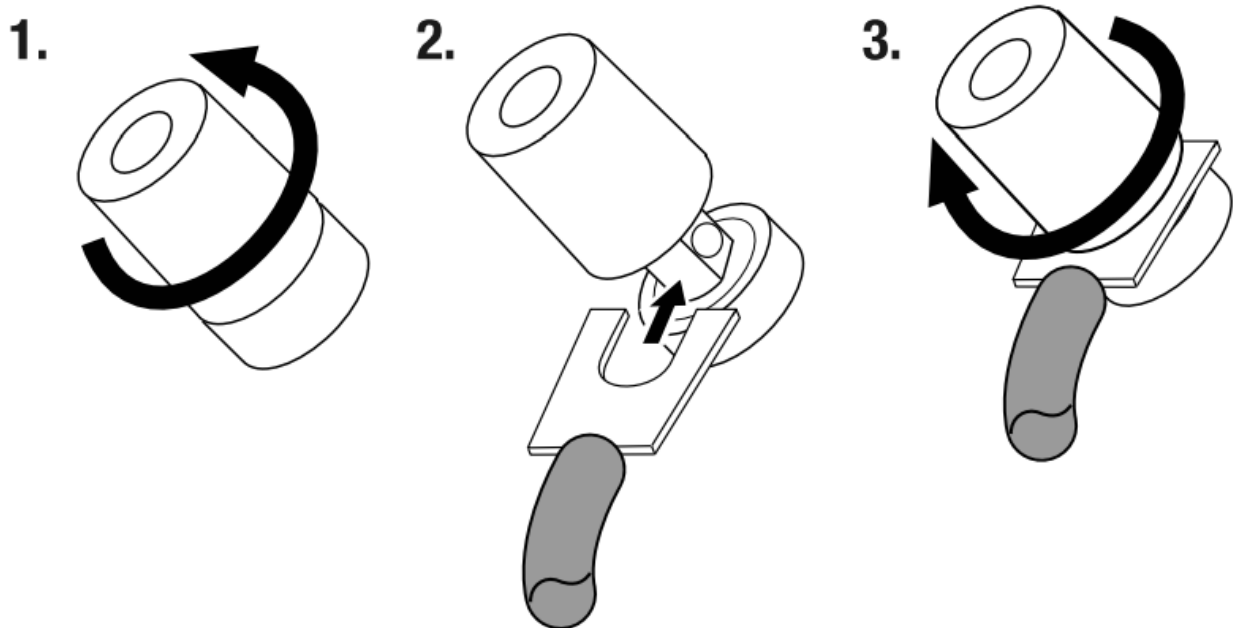
preferably unplugged from their AC outlets) before making any connections.

- Speakers and amplifiers have corresponding positive and negative (“+” and “-”) connection terminals. All Stage series speakers have connection terminals that are marked “+” and “-” on the terminal-cup assembly.
- Additionally, the “+” terminals have red markings, while the “-” terminals have black markings.
- To ensure proper polarity, connect each “+” terminal on the back of the amplifier or receiver to the respective “+” (red) terminal on each speaker.
- Connect the “-” terminals similarly. Do not reverse polarities (i.e., “+” to “-” or “-” to “+”) when making connections.
- Doing so will cause poor stereo imaging and diminished bass performance.

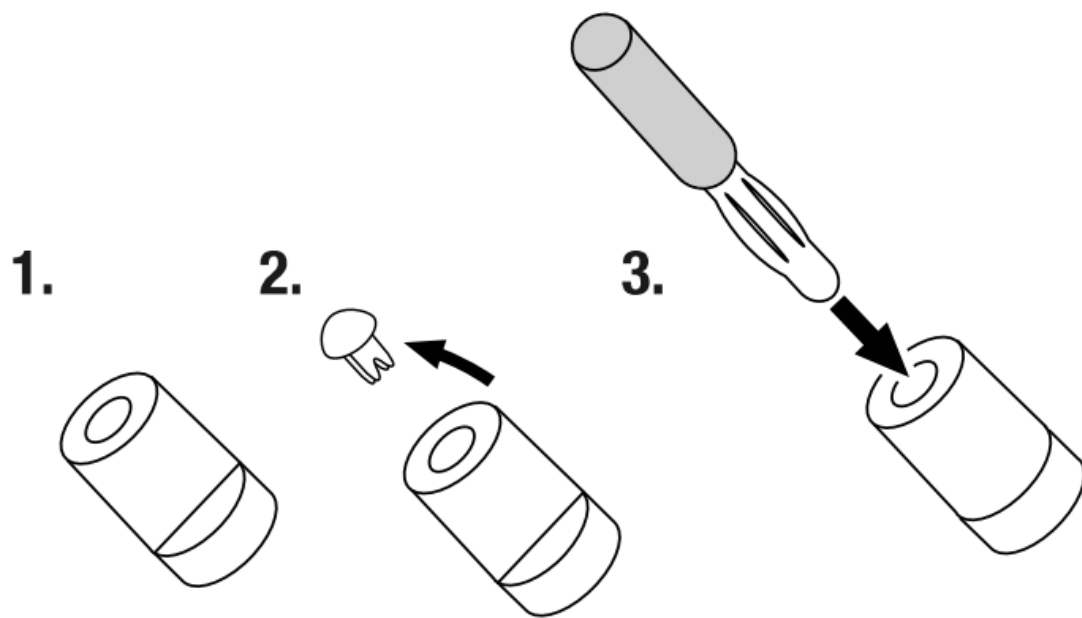
Connections, Bare Wire Connectors



USING SPADE CONNECTORS:

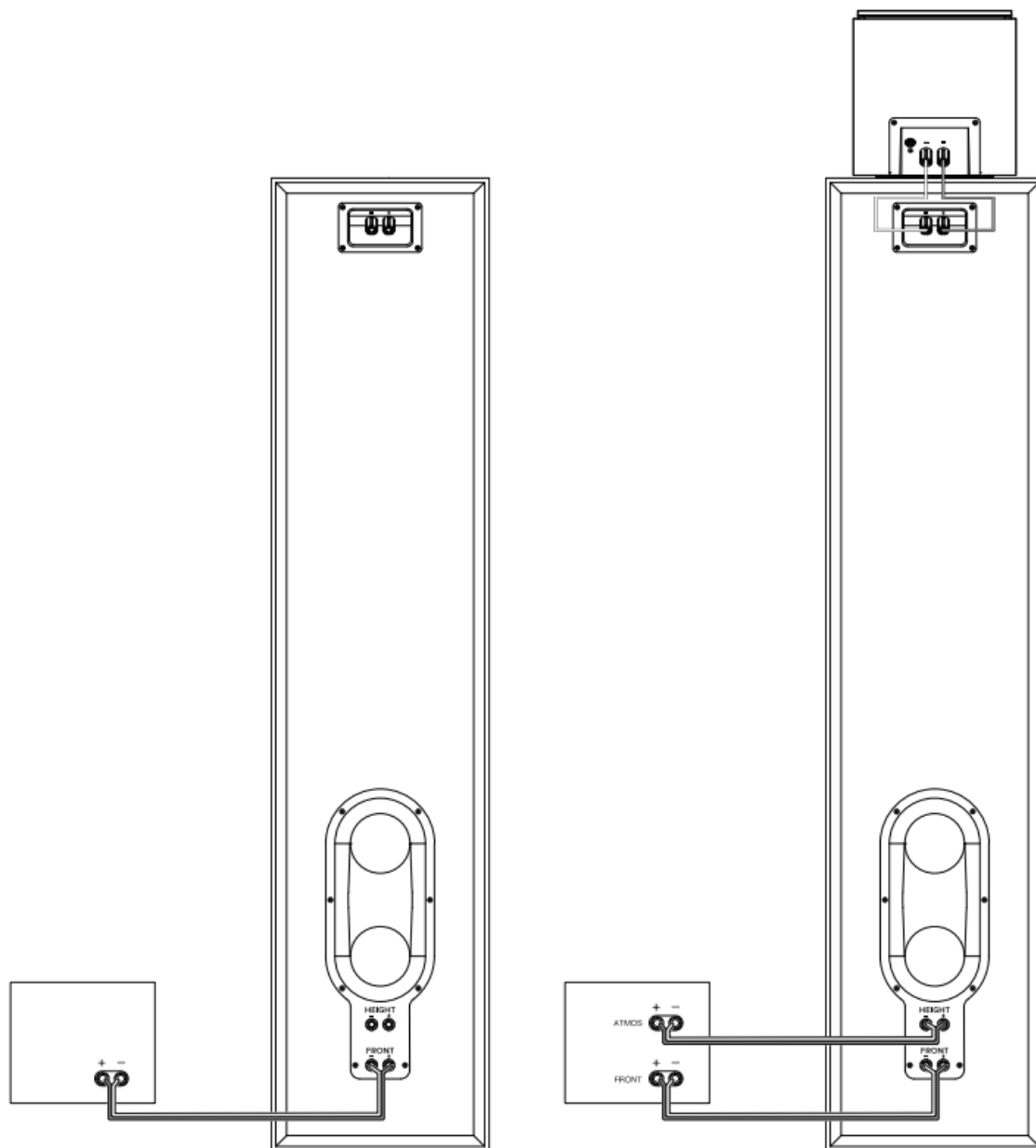


USING BANANA CONNECTORS:



Using The Pass Through ATMOS Connectors

- Use the Pass Through ATMOS connectors on the bottom of the 280f and 260f, and connect the 240h to the top terminals.
- **NOTE:** If you are not using an ATMOS module, these connectors will not be used.



Specifications

STAGE 280F

Type:	Floorstanding Loudspeaker System
Low Frequency Driver:	Dual 8-inch (200 mm) Polycellulose Ribbed Cone
High Frequency Driver:	1-inch (25 mm) Anodized Aluminum
Waveguide:	Next Generation HDI™
Recommended Amplifier Power:	20-225 W
RMS power:	125 W
Frequency Response -6 dB:	33 Hz-25 kHz
Frequency Response -3 dB:	39 Hz-25 kHz
Sensitivity @ 1 M, 2.83 V:	91 dB
Nominal Impedance:	6 Ohms
Crossover Frequencies:	1.1 kHz/2.2 kHz
Enclosure Tuning:	Bass Reflex via Dual Flared Racetrack Rear-Firing Tuned Ports
Finish:	Espresso or Latte
Dimensions (H x W x D):	43.8 in x 14.1 in x 16.5 in (1113 mm x 357 mm x 420 mm)
Dimensions (H x W x D) without Base:	43.8 in x 9.5 in x 16.1 in (1113 mm x 241 mm x 409 mm)
Product Weight:	55.2 lbs. (25.1 kg)
Shipping Weight:	67.5 lbs. (30.6 kg)
Shipping Units of Measure:	Each

STAGE 260F

Type:	Floorstanding Loudspeaker System
Low Frequency Driver:	Dual 6.5-inch (165 mm) Polycellulose Ribbed Cone
High Frequency Driver:	1-inch (25 mm) Anodized Aluminum
Waveguide:	Next Generation HDI™
Recommended Amplifier Power:	20-225 W
RMS power:	125 W
Frequency Response -6 dB:	40 Hz-25 kHz
Frequency Response -3 dB:	45 Hz-25 kHz
Sensitivity @ 1 M, 2.83 V:	90 dB
Nominal Impedance:	6 Ohms
Crossover Frequencies:	1.3 kHz/1.7 kHz
Enclosure Tuning:	Bass Reflex via Dual Flared Racetrack Rear-Firing Tuned Ports
Finish:	Espresso or Latte
Dimensions (H x W x D):	40.8 in x 12.2 in x 14.3 in (1036 mm x 310 mm x 362 mm)
Dimensions (H x W x D) without Base:	40.8 in x 7.9 in x 13.9 in (1036 mm x 200 mm x 354 mm)
Product Weight:	43.0 lbs. (19.5 kg)
Shipping Weight:	67.5 lbs. (30.6 kg)
Shipping Units of Measure:	Each

STAGE 250B

Type:	Bookshelf Loudspeaker System
Low Frequency Driver:	5.25-inch (130 mm) Polycellulose Ribbed Cone
High Frequency Driver:	1-inch (25 mm) Anodized Aluminum
Waveguide:	Next Generation HDI™
Recommended Amplifier Power:	20-150 W
RMS power:	75 W
Frequency Response -6 dB:	50 Hz-25 kHz
Frequency Response -3 dB:	55 Hz-25 kHz
Sensitivity @ 1 M, 2.83 V:	86 dB
Nominal Impedance:	6 Ohms
Crossover Frequencies:	1.7 kHz
Enclosure Tuning:	Bass Reflex via Dual Rear-Firing Tuned Ports
Finish:	Espresso or Latte
Dimensions (H x W x D):	12.6 in x 7.9 in x 9.5 in (321 mm x 200 mm x 241 mm)
Product Weight:	12.4 lbs.(5.6 kg)
Shipping Weight:	30 lbs. (13.6 kg)
Shipping Units of Measure:	Pair

STAGE 240B

Type:	Bookshelf Loudspeaker System
Low Frequency Driver:	4.5-inch (114 mm) Polycellulose Ribbed Cone
High Frequency Driver:	1-inch (25 mm) Anodized Aluminum
Waveguide:	Next Generation HDI™
Recommended Amplifier Power:	20-150 W
RMS power:	75 W
Frequency Response -6 dB:	53 Hz-25 kHz
Frequency Response -3 dB:	65 Hz-25 kHz
Sensitivity @ 1 M, 2.83 V:	85 dB
Nominal Impedance:	6 Ohms
Crossover Frequencies:	1.4 kHz
Enclosure Tuning:	Bass Reflex via Rear-Firing Tuned Port
Finish:	Espresso or Latte
Dimensions (H x W x D):	10.7 in x 6.9 in x 8.5 in (272 mm x 175 mm x 217 mm)
Product Weight:	10.1 lbs. (4.6 kg)
Shipping Weight:	22.9 lbs. (10.4kg)
Shipping Units of Measure:	Pair

STAGE245C

Type:	Floorstanding Loudspeaker System
Low Frequency Driver:	Quad 4.5-inch (114 mm) Polycellulose Ribbed Cone
High Frequency Driver:	1-inch (25 mm) Anodized Aluminum
Waveguide:	Next Generation HDI™
Recommended Amplifier Power:	20-150 W
RMS power:	75 W
Frequency Response -6 dB:	55 Hz-25 kHz
Frequency Response -3 dB:	82 Hz-25 kHz
Sensitivity @ 1 M, 2.83 V:	91 dB
Nominal Impedance:	6 Ohms
Crossover Frequencies:	1.3 KHz/2.0 kHz
Enclosure Tuning:	Bass Reflex via Dual Rear-Firing Tuned Ports
Finish:	Espresso or Latte
Dimensions (H x W x D):	6.1 in x 29.1 in x 8.5 in (156 mm x 740 mm x 217 mm)
Product Weight:	26.4 lbs. (12.0 kg)
Shipping Weight:	32.2 lbs. (14.7 kg)
Shipping Units of Measure:	Each

STAGE 240H

Type:	Dolby Atmos® Surround Sound Loudspeaker System
Low Frequency Driver:	4.5-inch (114 mm) Polycellulose Ribbed Cone
High Frequency Driver:	1-inch (25 mm) Anodized Aluminum
Waveguide:	Next Generation HDI™
Recommended Amplifier Power:	20-150 W
RMS power:	75 W
Frequency Response -6 dB:	85 Hz-25 kHz
Frequency Response -3 dB:	100 Hz-25 kHz
Sensitivity @ 1 M, 2.83 V:	85 dB
Nominal Impedance:	6 Ohms
Crossover Frequencies:	1.6 kHz
Enclosure Tuning:	Sealed
Finish:	Espresso or Latte
Dimensions (H x W x D):	6.9 in x 7.1 in x 10.6 in (176 mm x 180 mm x 270 mm)
Product Weight:	7.6 lbs. (3.5 kg)
Shipping Weight:	18.8 lbs. (8.5 kg)
Shipping Units of Measure:	Pair

Customer Service

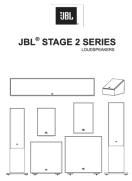
- **JBL Stage 2 QSG I Rev 1.0 20240402**
- **©2024 HARMAN International**
- **Features, Specifications, and Appearance are subject to change without notice.**
- Dolby, Dolby Atmos, and the double-D symbol are registered trademarks of Dolby Laboratories Licensing Corporation.
- Manufactured under license from Dolby Laboratories. Confidential unpublished works.
- Copyright© 2012-2021 Dolby Laboratories. All rights reserved.
- Harman International Industries, Incorporated.
- 8500 Balboa Blvd, Northridge, CA 91329, United States.
- **European Representative:** Harman International Industries, Incorporated. EMEA Liaison Office, Danzigerkade 16G, 1013 AP Amsterdam, The Netherlands.
- **UK Business Address:** Ground Floor, Westside 2, London Road, Apsley, Hemel Hempstead, Hertfordshire, HP3 9td, United Kingdom.

- © 2024 Harman International Industries, Incorporated. All Rights Reserved. JBL is a trademark of Harman International Industries, Incorporated, registered in the United States and other countries.
- Features, Specifications, and Appearance are subject to change without notice.
- For additional languages, please visit [JBL.com/Specialty-Audio/](https://www.jbl.com/Specialty-Audio/)



- Should further assistance be required, feel free to contact our Customer Support at the numbers below:
- Inside the US and Canada: +1 8886914171 Outside the US and Canada: +44 1707668012

Documents / Resources

	JBL STAGE 2 Series 2-Way Component Speakers [pdf] Instruction Manua Stage2 240H WHT, STAGE 2 Series 2-Way Component Speakers, STAG E 2 Series, 2-Way Component Speakers, Component Speakers, Speaker s
---	--

References

- [User Manual](#)

JBL
2-Way Component Speakers, Component Speakers, JBL, Speakers, STAGE 2 Series, STAGE 2 Series 2-Way Component Speakers, Stage2 240H WHT

Leave a comment

Your email address will not be published. Required fields are marked *

Comment *

Name

Email

Website

☐ Save my name, email, and website in this browser for the next time I comment.

Post Comment

Search:

e.g. whirlpool wrf535swhz

Search

[Manuals+](#) | [Upload](#) | [Deep Search](#) | [Privacy Policy](#) | [@manuals.plus](#) | [YouTube](#)

This website is an independent publication and is neither affiliated with nor endorsed by any of the trademark owners. The "Bluetooth®" word mark and logos are registered trademarks owned by Bluetooth SIG, Inc. The "Wi-Fi®" word mark and logos are registered trademarks owned by the Wi-Fi Alliance. Any use of these marks on this website does not imply any affiliation with or endorsement.