



JBL LEGEND 700 Series Wireless Android Auto Digital Multimedia Receiver Instruction Manual

[Home](#) » [JBL](#) » JBL LEGEND 700 Series Wireless Android Auto Digital Multimedia Receiver Instruction Manual 



Operations manual

Contents

- 1 WIRELESS ANDROID AUTO CONNECTION PROCESS
- 2 WIRELESS ANDROID AUTO – DISCONNECTION PROCESS
- 3 WIRELESS ANDROID AUTO – ADD ADDITIONAL DEVICES
- 4 WIRELESS ANDROID AUTO – SWITCH DEVICES (SWITCH CP/ AA/BT DEVICES)
- 5 WIRELESS ANDROID AUTO DELETE DEVICES
- 6 WIRELESS ANDROID AUTO – DEVICE CANNOT CONNECT
- 7 Documents / Resources
 - 7.1 References

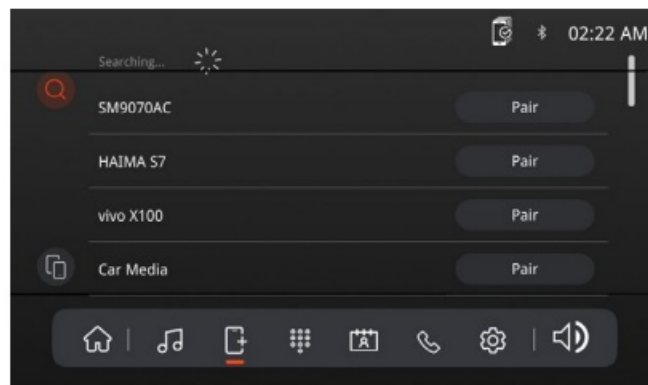
WIRELESS ANDROID AUTO CONNECTION PROCESS

1. Wireless Android Auto Setup

Enter the developer settings option of Android Auto, check the Wireless Android Auto option.

2. Connect Bluetooth

Click the Android Auto icon on the main screen, a dialog will appear. Turn on Bluetooth and WiFi on the phone you want to connect. Click the Bluetooth button to enter the device list pairing interface. There are two pairing methods:

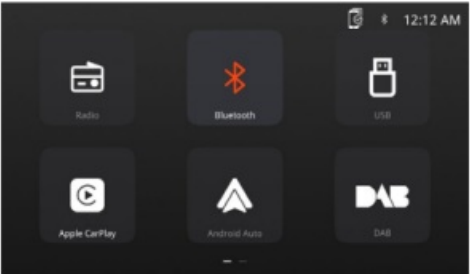


Phone click pair:

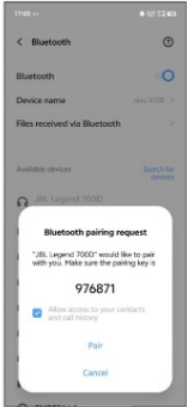
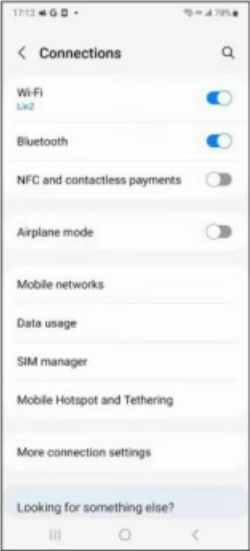
1. Enter the Bluetooth pairing interface on the phone, click the search button on the HU, find the phone name, and click pair.
 2. Search for the HU from the phone's list and click pair.
- ### 3. Connect HU WiFi
- ### 4. Connect Android Auto

The phone will prompt for Android Auto authorization and access. Select to allow usage.

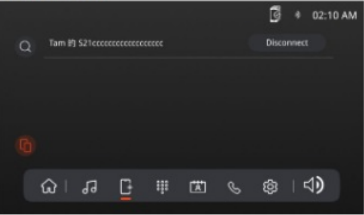
Click the Android Auto icon:



Phone opens BT and WiFi, HU enters search interface:



Pairing successful:



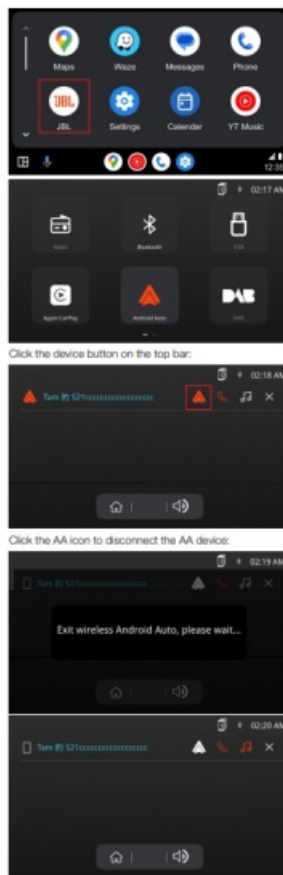


WIRELESS ANDROID AUTO – DISCONNECTION PROCESS

1. Disconnect Android Auto

Click the Android Auto exit icon, click the device icon on the top bar to enter the device list, click the AA icon, and disconnect the connected AA device.

Click the exit icon (AA), return to the main screen:



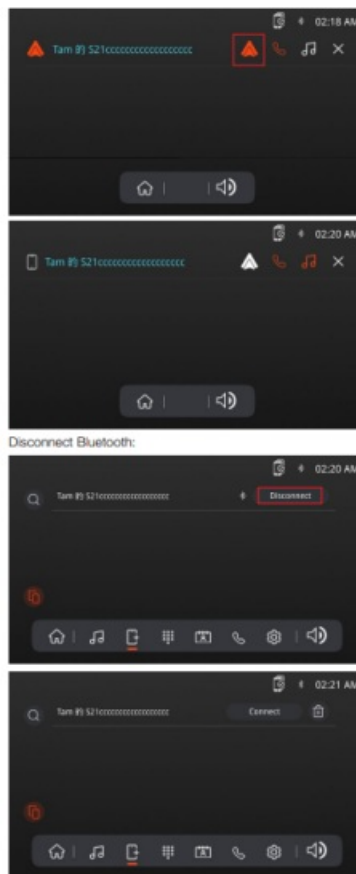
WIRELESS ANDROID AUTO – ADD ADDITIONAL DEVICES

1. Disconnect Android Auto

Click the Android Auto exit icon on the HU, click the device icon on the top bar to enter the device list, click the AA running icon, and disconnect the currently connected AA device.

2. Disconnect Bluetooth

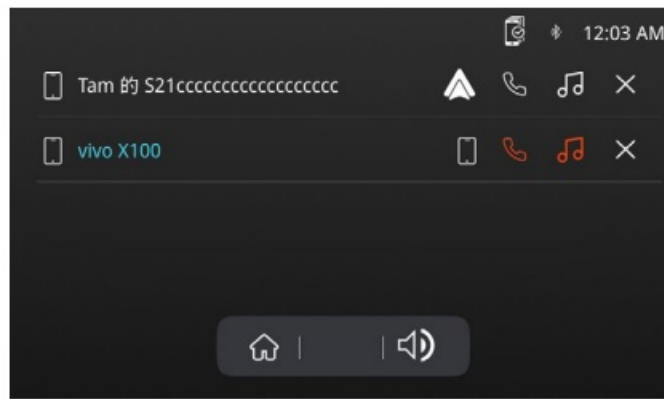
Click the icon to return to the main screen, then click the Bluetooth icon on the main screen to enter the Bluetooth pairing interface. Click the Disconnect button for the connected device to disconnect the Bluetooth device. You can then add another device (Wireless CP/Wireless AA/ Bluetooth) following the respective procedures. Disconnect AA:



Below is a demonstration of adding a Bluetooth device:
Phone opens BT interface:



Pairing successful:



WIRELESS ANDROID AUTO – SWITCH DEVICES (SWITCH CP/ AA/BT DEVICES)

1. Disconnect Android Auto

Click the Android Auto exit icon, click the device icon on the top bar to enter the device list, click the AA running icon, and disconnect the connected AA device.

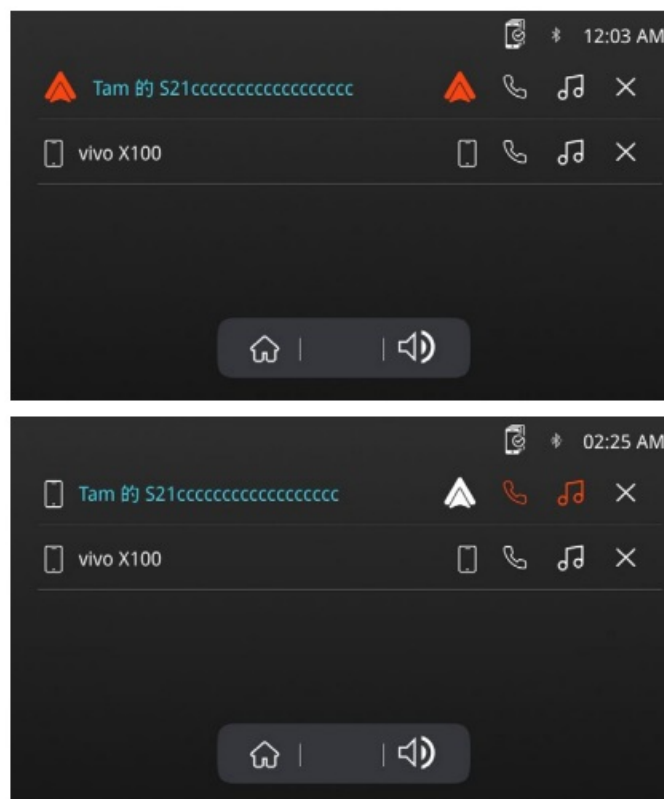
2. Select the device to connect from the device list

1. If it's a CP device, click the CarPlay running icon (if the device has been connected to CP before, if not follow the Wireless CarPlay – Add Additional Devices and Wireless CarPlay – Connection Process).

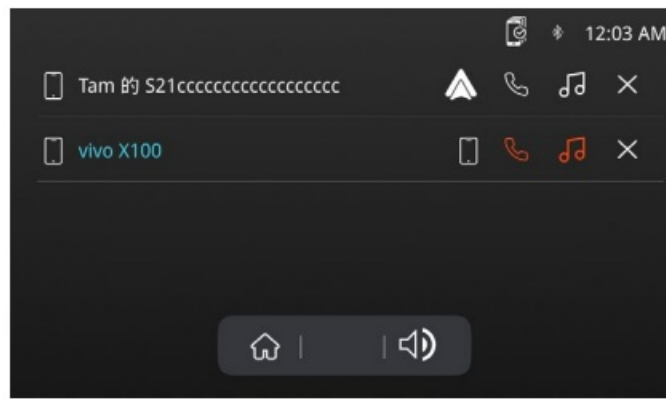
2. If it's an AA device, click the AA running icon (if the device has been connected to AA before, if not follow the Wireless Android Auto – Add Additional Devices and Wireless Android Auto – Connection Process).

3. If it's a BT device, click the Bluetooth phone button and the Bluetooth music button (if the device has been connected to BT before, if not follow the BT device pairing process).

Below is a demonstration of switching from an AA device to a BT device: Disconnect AA device:

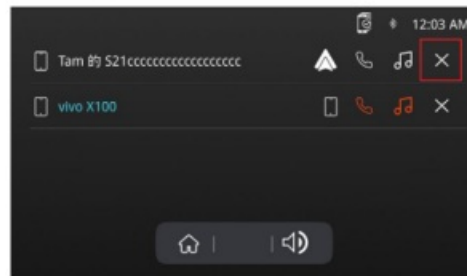
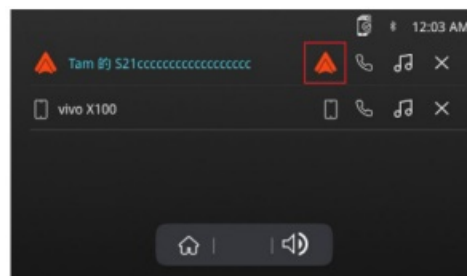


Click the BT device Bluetooth button to connect BT device:

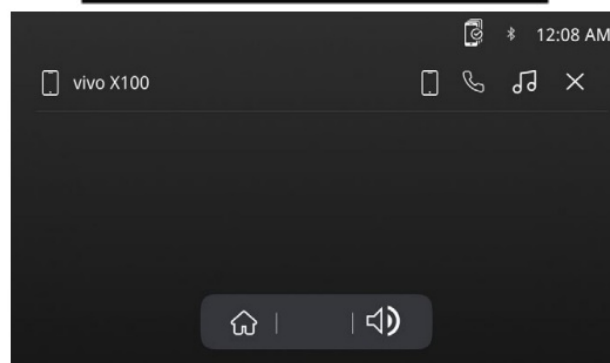
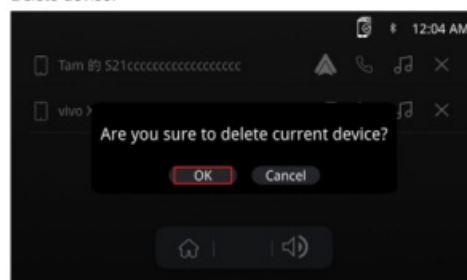


WIRELESS ANDROID AUTO DELETE DEVICES

1. If the AA device is connected: Disconnect Wireless AA, click the delete button next to the device.
2. If the AA device is not connected: Click the delete button next to the device. Disconnect AA device:

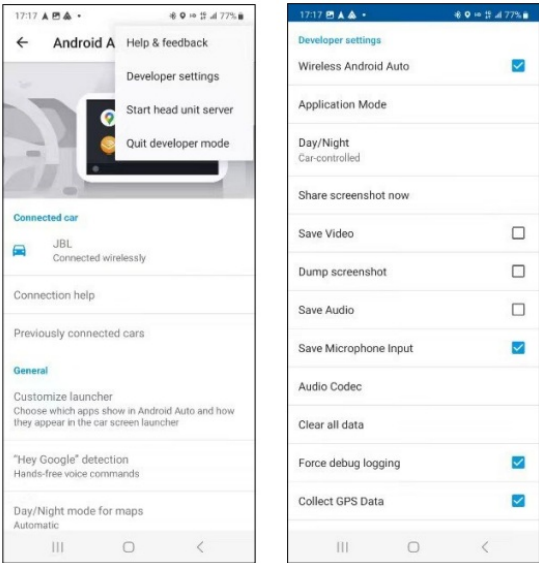


Delete device:



WIRELESS ANDROID AUTO – DEVICE CANNOT CONNECT

1. Check the Android Auto settings on your phone: Enter the developer options of Android Auto, and see if the Wireless Android Auto option is enabled. If not, please enable it.
2. If method one doesn't work, please delete and re-pair the devices between your phone and the head unit (HU).
AA wireless settings:





HARMAN International Industries, Incorporated 8500 Balboa Boulevard, Northridge, CA 91329 USA www.jbl.com



© 2024 HARMAN International Industries, Incorporated. All rights reserved.
JBL is a trademark of HARMAN International Industries, Incorporated, registered in the United States and/or other countries.
Features, specifications and appearance are subject to change without notice.
CA_JBL_Legend 700 700D Wireless Android Auto_OM_GLOBAL_SOP_V5_online

Documents / Resources

	<p>JBL LEGEND 700 Series Wireless Android Auto Digital Multimedia Receiver [pdf] Instruction Manual</p> <p>LEGEND 700 Series, LEGEND 700 Series Wireless Android Auto Digital Multimedia Receiver, Wireless Android Auto Digital Multimedia Receiver, Android Auto Digital Multimedia Receiver, Auto Digital Multimedia Receiver, Multimedia Receiver, Receiver</p>
	<p>JBL Legend 700 Series Wireless Android Auto Digital Multimedia Receiver [pdf] Instruction Manual</p> <p>Legend 700 Series, Legend 700 Series Wireless Android Auto Digital Multimedia Receiver, Wireless Android Auto Digital Multimedia Receiver, Android Auto Digital Multimedia Receiver, Digital Multimedia Receiver, Multimedia Receiver, Receiver</p>

References

- [User Manual](#)

[Manuals+](#), [Privacy Policy](#)

This website is an independent publication and is neither affiliated with nor endorsed by any of the trademark owners. The "Bluetooth®" word mark and logos are registered trademarks owned by Bluetooth SIG, Inc. The "Wi-Fi®" word mark and logos are registered trademarks owned by the Wi-Fi Alliance. Any use of these marks on this website does not imply any affiliation with or endorsement.