



JBL JWMSET Wireless Microphone User Guide

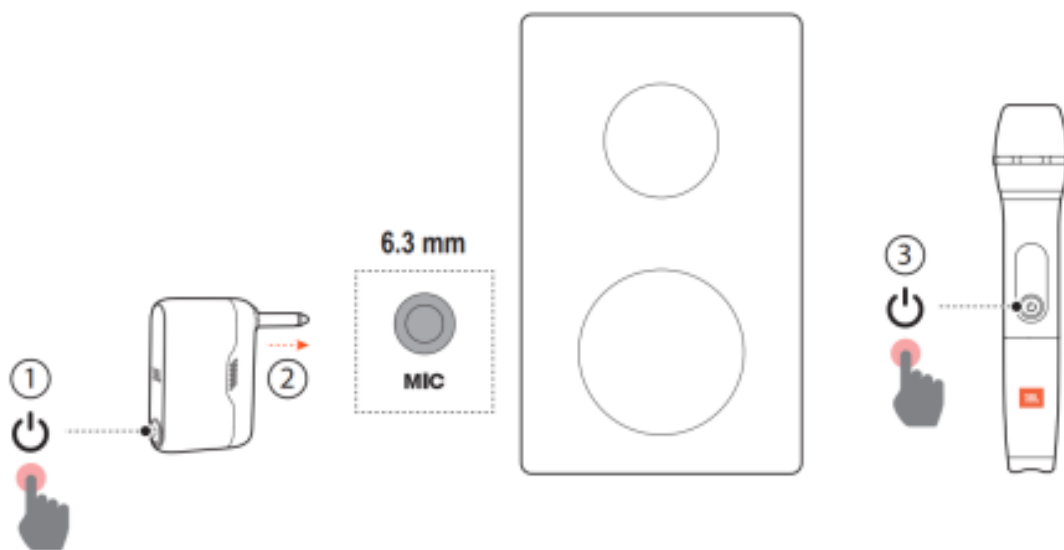
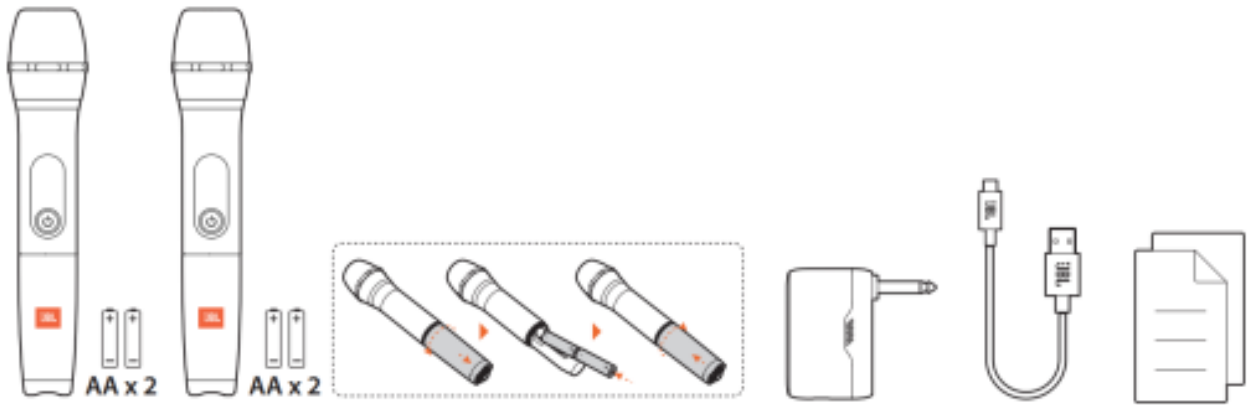
[Home](#) » [JBL](#) » JBL JWMSET Wireless Microphone User Guide 

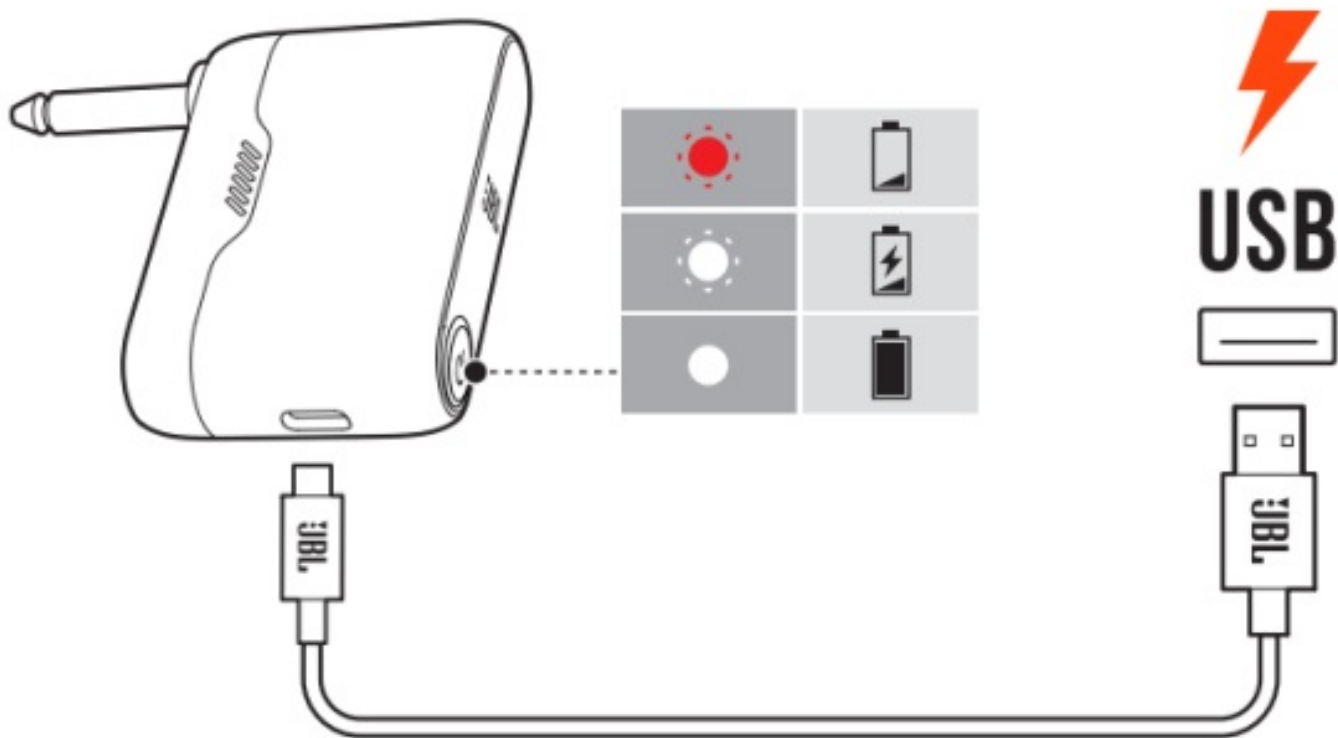


Quick Start Guide



Before using this product, read the safety sheet carefully.





Speaker may have noise interference when singing a song while charging the receiver.

To protect battery lifespan, fully charge at least once every 3 months. Battery life will vary due to usage patterns and environmental conditions.

Contents

[1 General specification](#)

[2 Documents /
Resources](#)

[3 Related Posts](#)



General specification

- Model No.: Wireless Microphone Set
- Distance between transmitter and receiver :>10 m
- Polar pattern: Cardioid
- Frequency response: 65 Hz – 15 kHz
- Signal-to-Noise(S/N) ratio: 60 dBA
- UHF frequency band: 470 – 960 MHz (depends on SKU) (EU 657 – 662 MHz)
- THD: 0.5%, typical
- Dynamic range: 100 dB A-weighted, typical
- Transmitter transmitting power: <10 mW, typical
- Receiver input: 1/4"(6.3 mm) unbalanced

- Receiver maximum Output Level: -13 dBV, typical
- Receiver Rechargeable Battery: Lithium-ion Polymer 3.7 WH (Equivalent to 3.7 V, 1000 mAh)
- Receiver charge time: 2 hours @5V/1A
- Receiver battery Playtime: Up to 6 hours
- Microphone battery: 4 x AA alkaline (included) Dimensions and Weight
- Dimensions (W x H x D): Microphone: $\Phi 50 \times 233$ mm / 1.95" x 9.16"; Receiver: 70 mm x 80 mm x 20 mm / 2.75" x 3.14" x 0.78"
- Weight:
Microphone: 235 g / 0.52 lb;
Receiver: 54g / 0.12 lb



Documents / Resources



[JBL JWMSET Wireless Microphone](#) [pdf] User Guide
JWMSET, APIJWMSET, JWMSET Wireless Microphone, JWMSET, Wireless Microphone