



JBL CHARGE3 User Guide

[Home](#) » [JBL](#) » JBL CHARGE3 User Guide

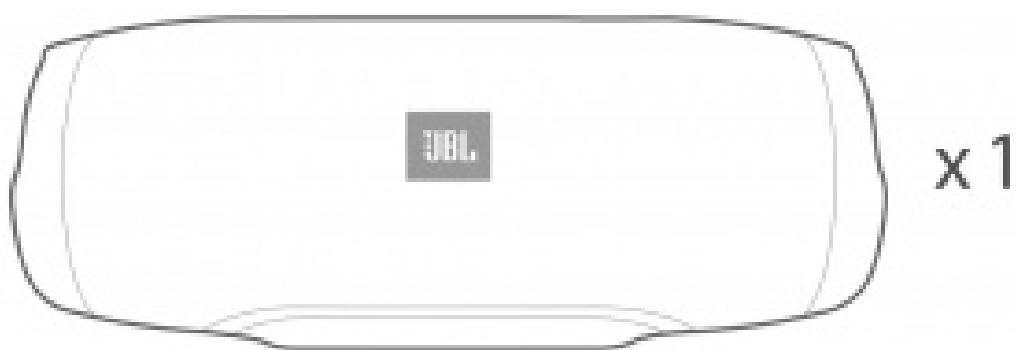
JBL CHARGE3



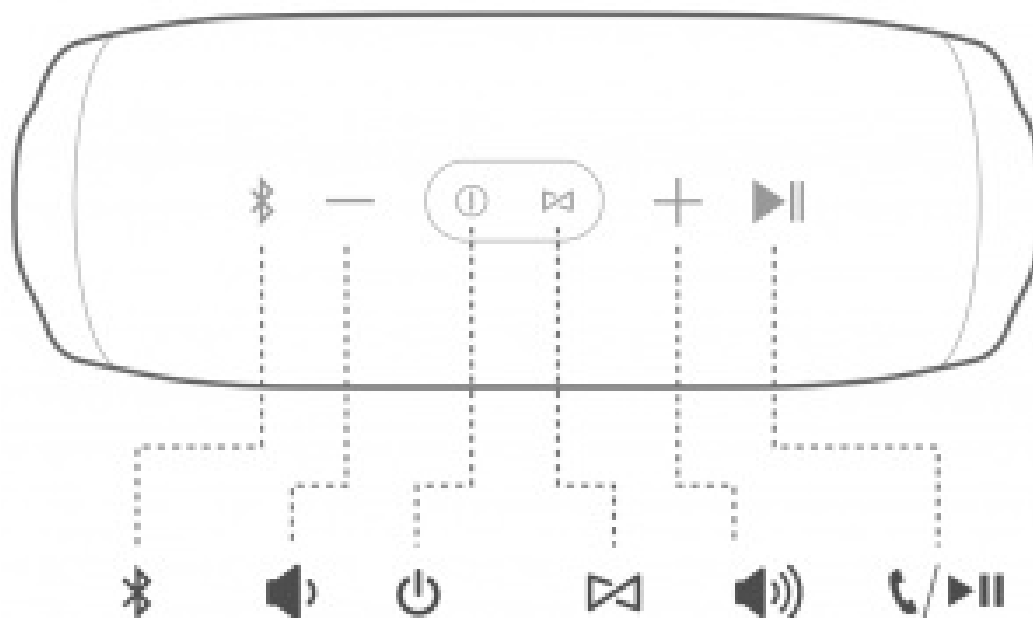
Contents [[hide](#)

- 1 What's in the box
- 2 Buttons
- 3 Connections
- 4 Bluetooth®
- 5 Hands-free
- 6 JBL Connect
 - 6.1 Voice Assistant
- 7 LED Behavior
- 8 Warning
- 9 Documents / Resources
- 10 Related Posts

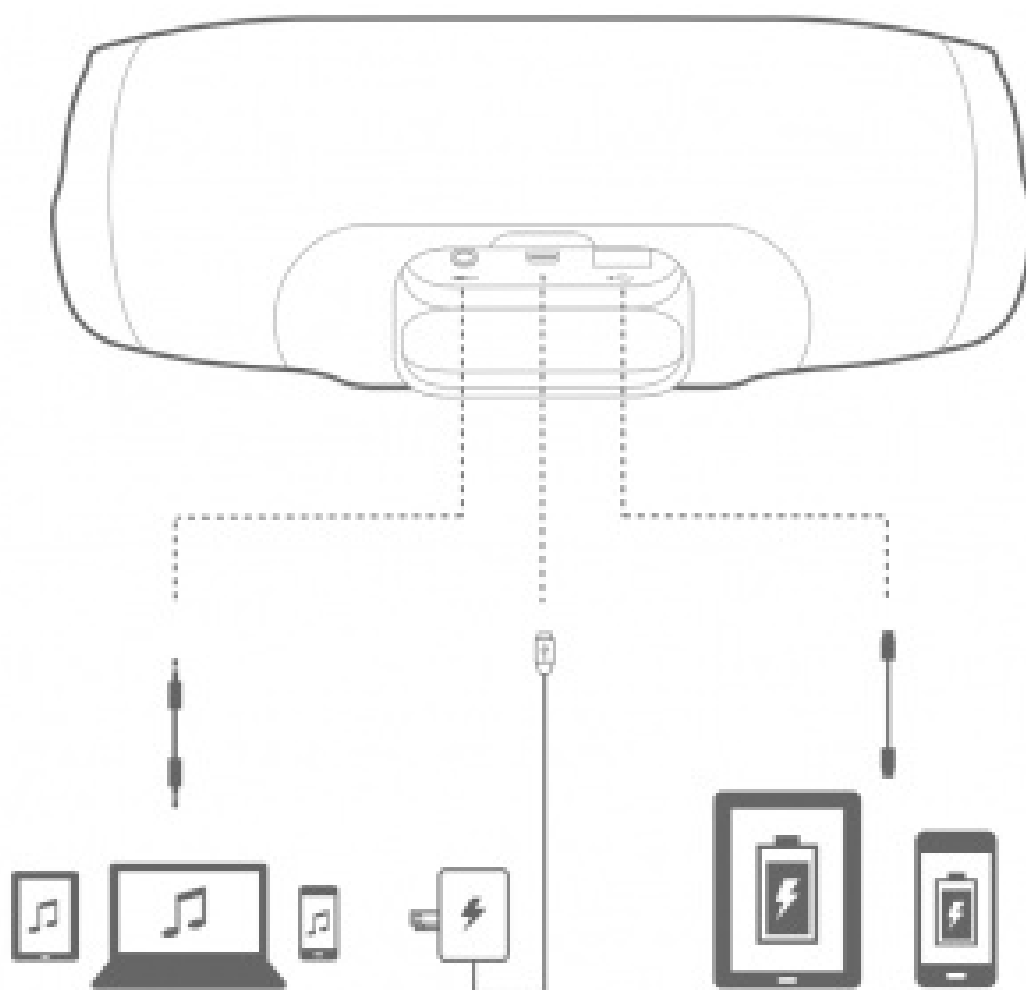
What's in the box



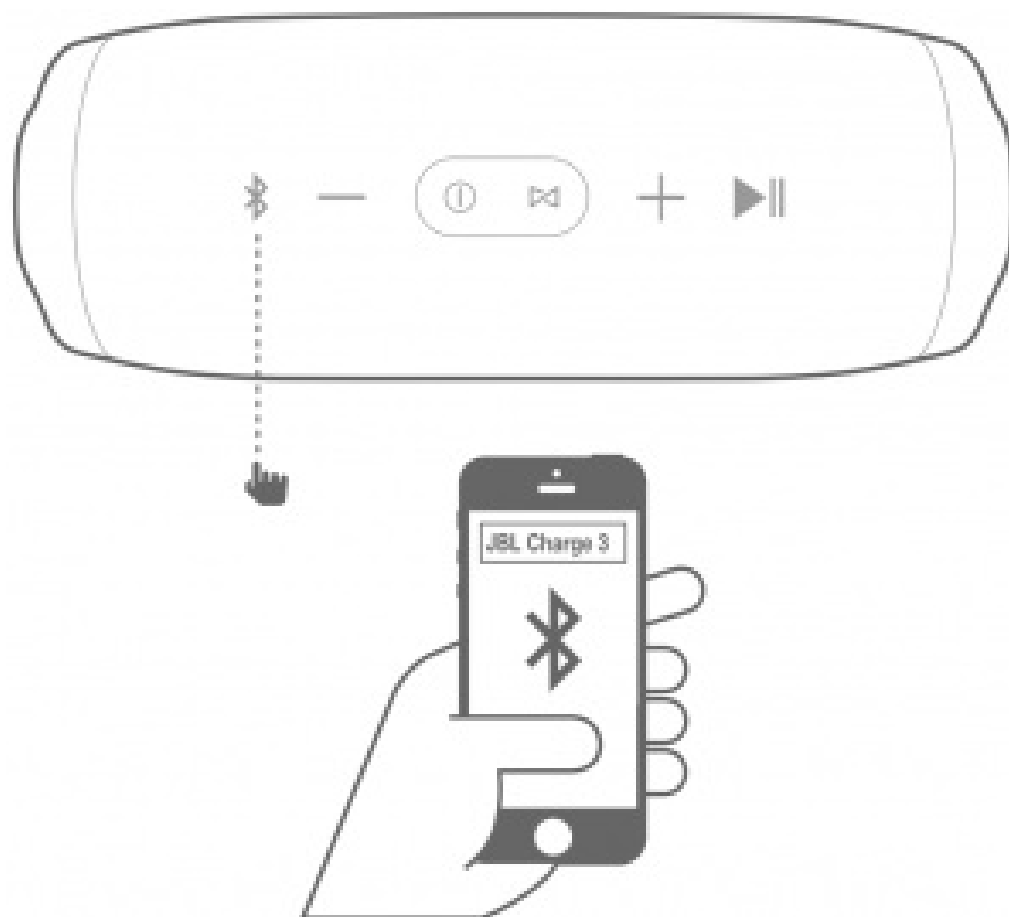
Buttons



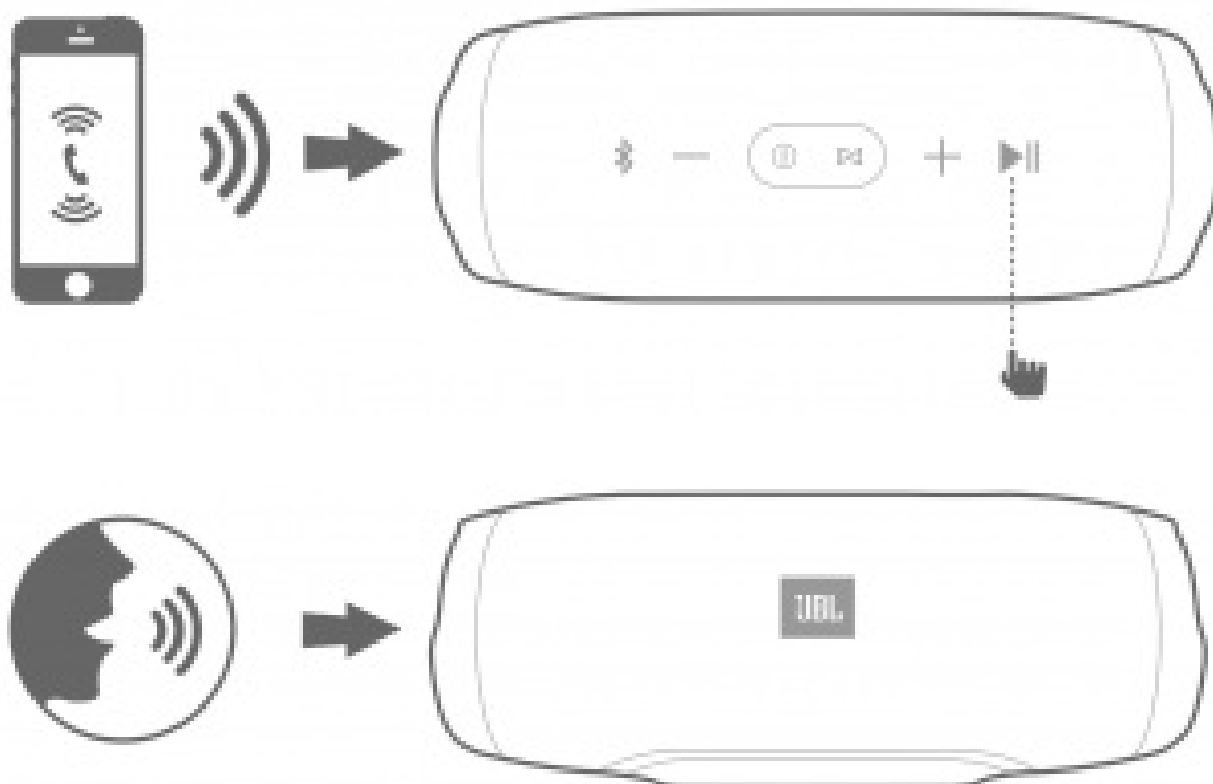
Connections



Bluetooth®

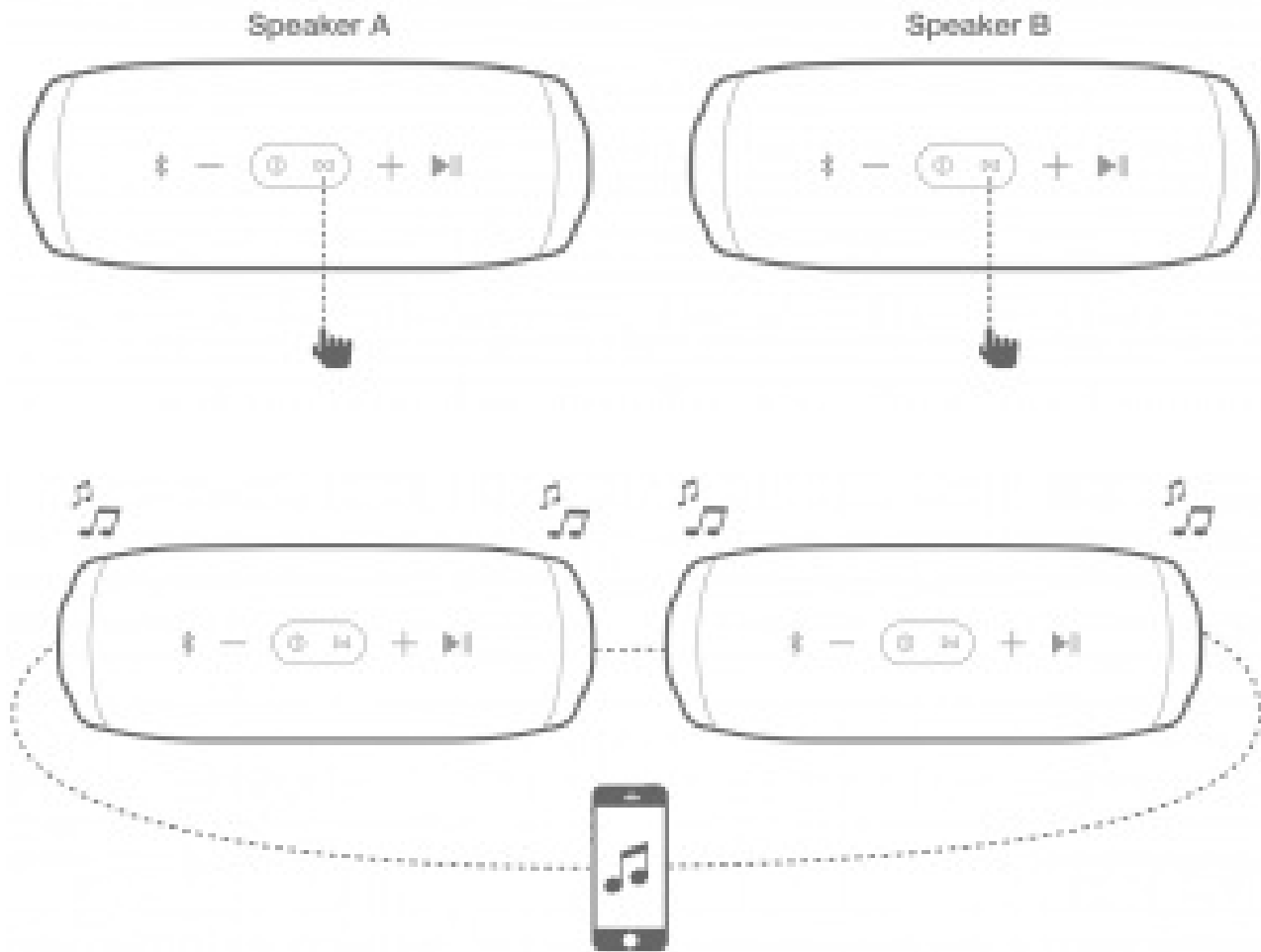


Hands-free



JBL Connect

Wirelessly links multiple JBL Connect compatible speakers together.



Press the JBL Connect button on all desired speakers to begin pairing. All connected speakers will play the same music from the same device.

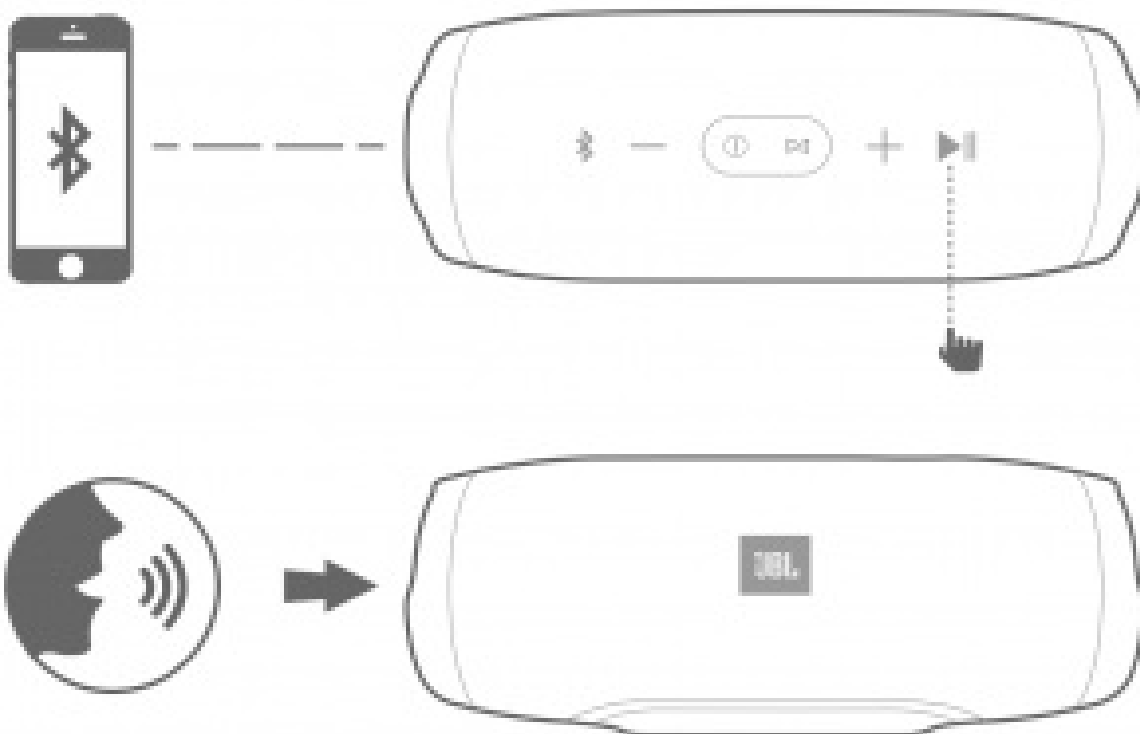


Voice Assistant







Please make sure the firmware of the JBL speaker and JBL Connect app on your phone are up to date. Tap "Voice Assistant" in the app, to make the "Play/Pause" button as the activation key of Siri or Google Now on your phone.



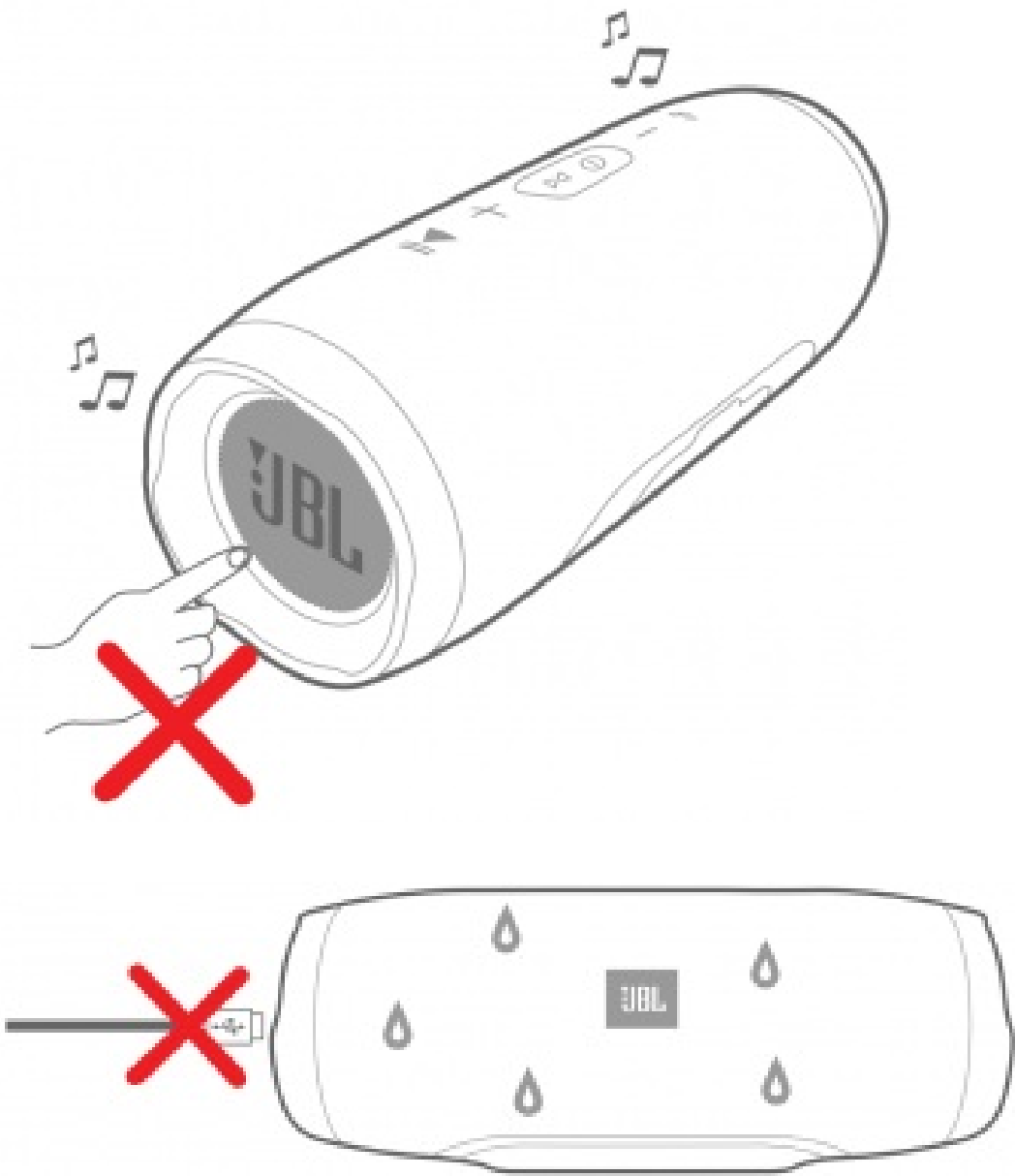
Press the “Play/Pause” button on the speaker to activate Siri or Google Now on your phone. Please make sure the Siri or Google Now is enabled on your phone.



LED Behavior

	 (White)	 (White)	 (Blue)	 (Blue)
	Standby	Power on	Bluetooth Pairing	Bluetooth Connected
	Speaker Connecting	Speaker Connected	NA	NA

Warning



JBL Charge 3 is IPX7 waterproof.

IMPORTANT: To ensure that the JBL Charge 3 is waterproof, please remove all cable connections and tightly close the cap; exposing the JBL Charge 3 to liquids without doing so may result in permanent damage to the speaker. And do not expose JBL Charge 3 to water while charging, as doing so may result in permanent damage to the speaker or power source.

IPX7 waterproof is defined as the speaker can be immersed in water up to 1 m for up to 30 minutes.

- **Bluetooth version:** 4.1
- **Support:** A2DP V1.3, AVRCP V1.5, HFP V1.6, HSP V1.2
- **Transducers:** 2 x 50mm
- **Rated power:** 2 x 1 OW
- **Frequency response:** 65Hz-20kHz
- **Signal-to-noise ratio:** >80dB
- **Battery type:** Lithium-ion Polymer (22.2Wh)
- **Power Supply:** 5V / 2.3A
- **USB charge out:** 5V / 2A (maximum)
- **Music play time:** up to 20 hours (varies by volume level and content)
- **Battery charge time:** 4.5 hrs
- **Dimensions (W x D x H):** 213 x 87 x 88.5 mm
- **Weight:** 800g
- **Bluetooth® transmitter frequency range:** 2.402 – 2.480 GHz
- **Bluetooth® transmitter power:** 0-9dBm
- **Bluetooth® transmitter modulation:** GFSK, $\pi/4$ DQPSK, 8DPSK



VoiceLogic is a leading-edge voice-enhancement technology that significantly improves the clarity of voice communications by minimizing a wide variety of background noises.



The Bluetooth® word mark and logos are registered trademarks owned by Bluetooth SIG, Inc. and any use of such marks by HARMAN International Industries, Incorporated is under license. Other trademarks and trade names are those of their respective owners.

A	2010	N	2023
B	2011	0	2024
C	2012	p	2025
D	2013	Q	2026
E	2014	R	2027
F	2015	s	2028
G	2016	T	2029
H	2017	u	2030
I	2018	V	2031
J	2019	X	2032
K	2020	y	2033
L	2021	z	2034
M	2022	noBTOPHO Ha4aTb C A	

For more information, consult the ANATEL website- www.anatel.gov.br





[JBL CHARGE3](#) [pdf] User Guide CHARGE3