



# JBL 962C 6"x9" Component Speaker System Owner's Manual

[Home](#) » [JBL](#) » JBL 962C 6"x9" Component Speaker System Owner's Manual 

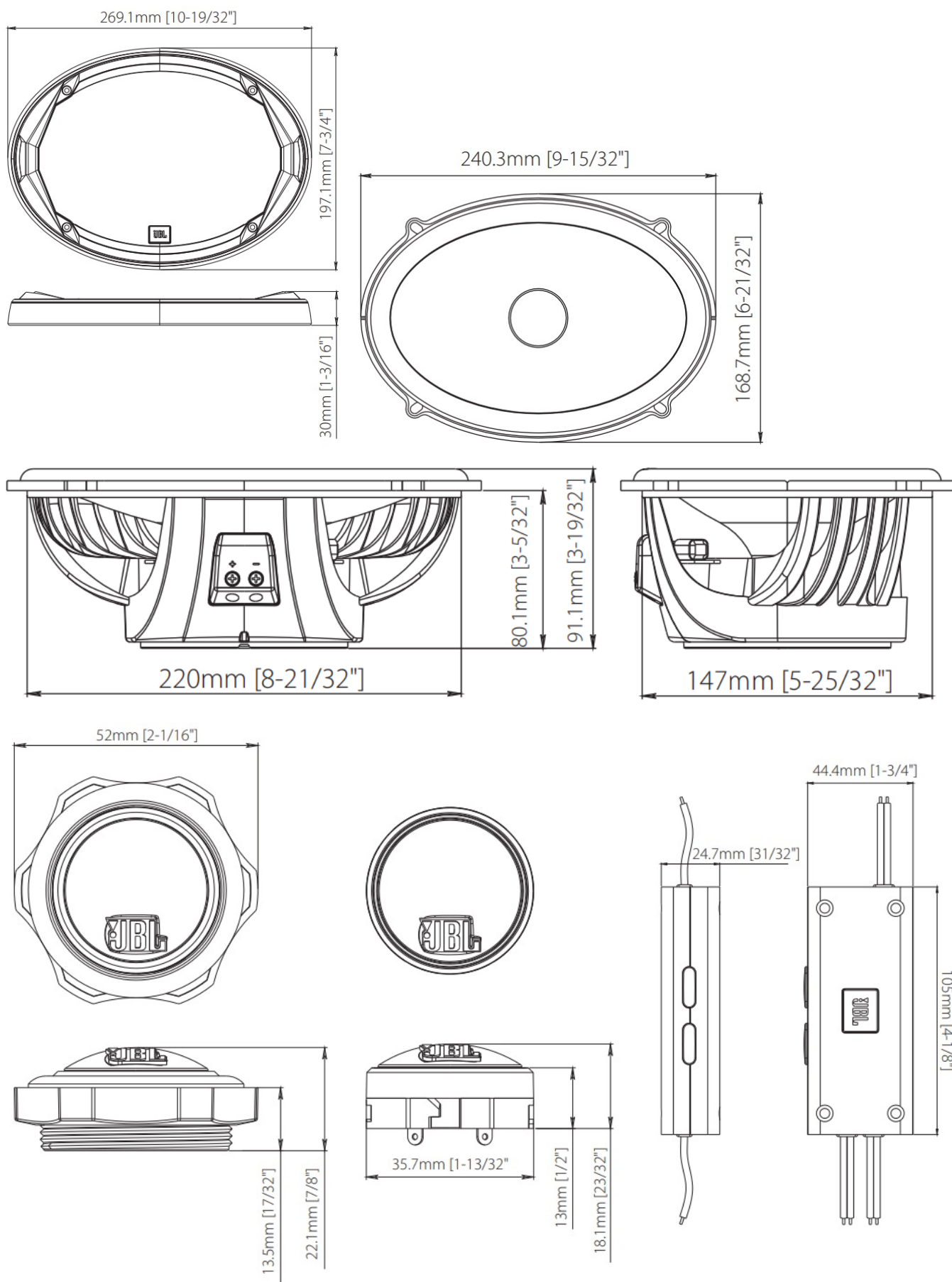
## JBL 962C 6"x9" Component Speaker System Owner's Manual



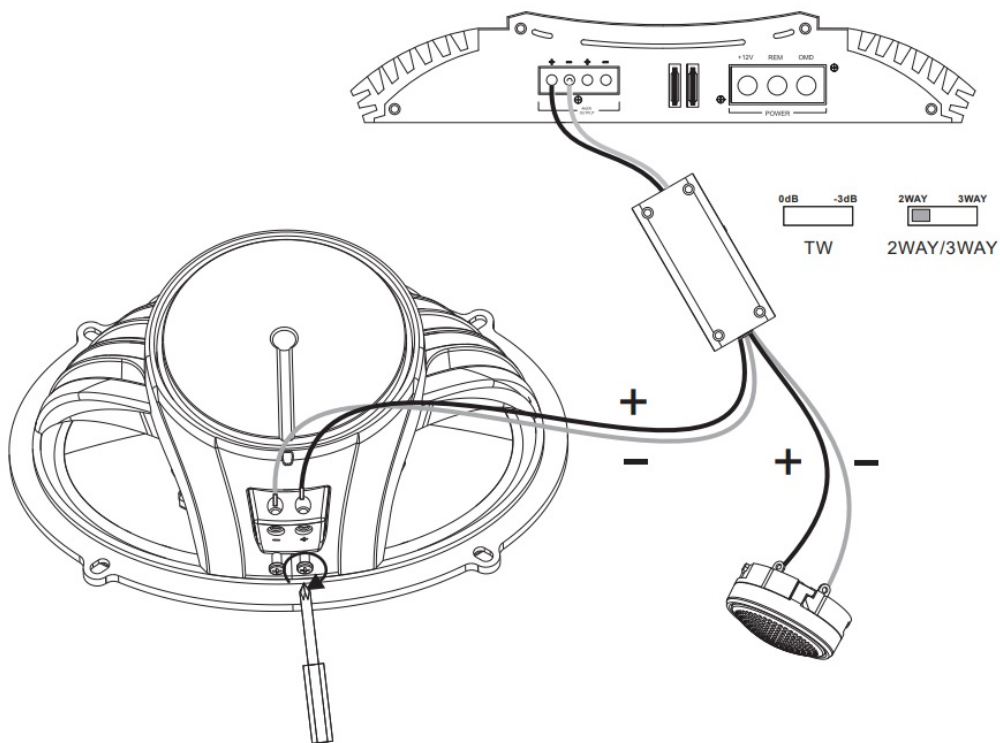
### Contents

- [1 Dimensions](#)
- [2 Battery Installations](#)
- [3 Mounting Instructions and Parts](#)
- [4 Specifications](#)
- [5 Thiele-Small Parameters](#)
- [6 Other Models](#)
- [7 Features and Benefits](#)
- [8 What's in the box:](#)
- [9 Technical Specifications:](#)
- [10 Documents / Resources](#)
  - [10.1 References](#)
- [11 Related Posts](#)

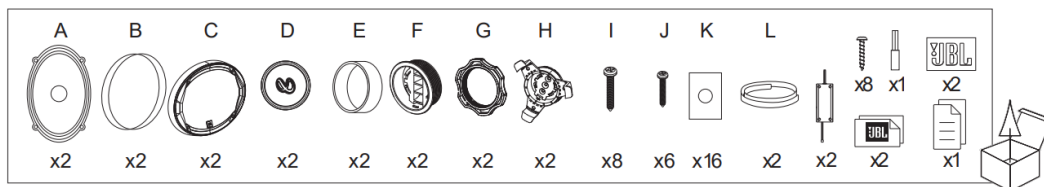
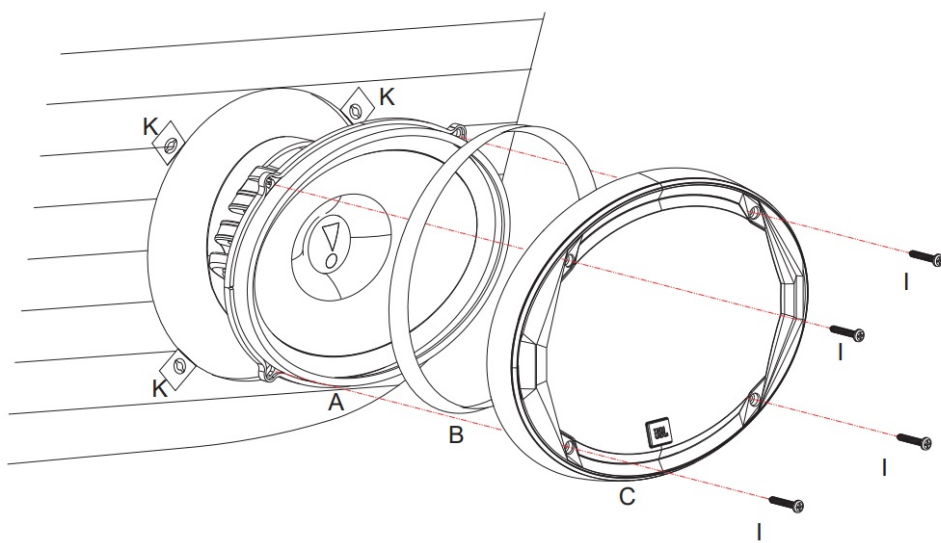
### Dimensions

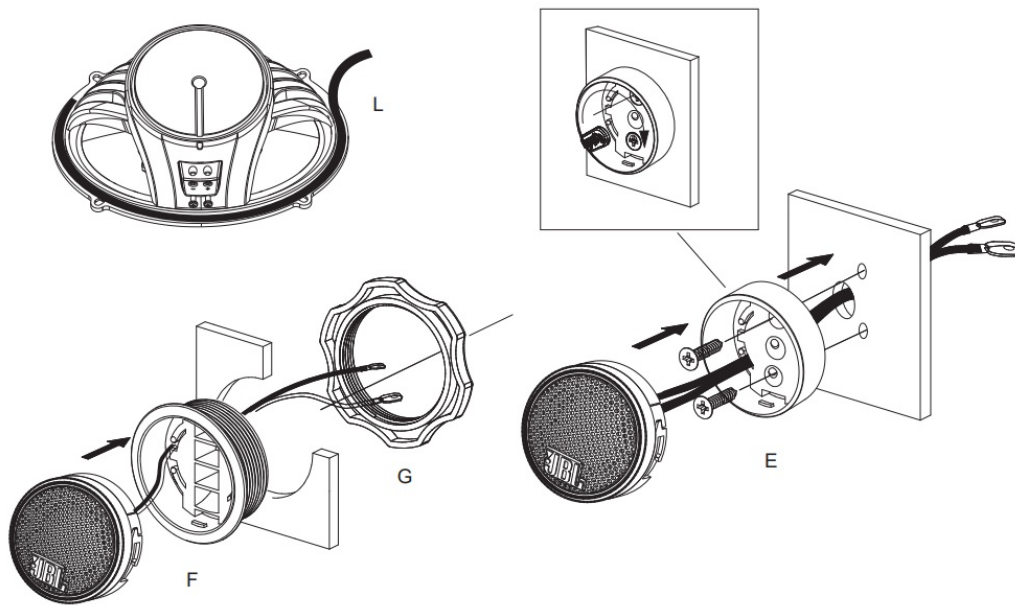


## Battery Installations



## Mounting Instructions and Parts





## Specifications

- Type: 6" x 9" (168 mm x 240 mm)  
Two-way Component Speaker System
- Power Handling: 145 Wrms, 435 W peak
- Sensitivity (@ 2.83 V): 94 dB
- Frequency Response: 35 Hz – 40 kHz
- Impedance: 3.0 ohms

## Thiele-Small Parameters

- BL (Tm): 6.162
- DCR (ohms): 2.70
- Mms (g): 28.033
- Sd (cm<sup>2</sup>): 248.85
- Cms (mm/N): 0.34
- Vas (l): 29.7588
- Fs (Hz): 51.6
- Qes: 0.671
- Qms: 7.374
- Qts: 0.615
- Crossover Point: 3.9 kHz



HARMAN International  
Industries, Incorporated 8500  
Balboa Boulevard, Northridge, CA 91329 USA  
© 2021 HARMAN International  
Industries, Incorporated.  
All rights reserved.

JBL is a trademark of HARMAN International Industries, Incorporated, registered in the United States and/or other countries.

Features, specifications and appearance are subject to change without notice.

## Other Models

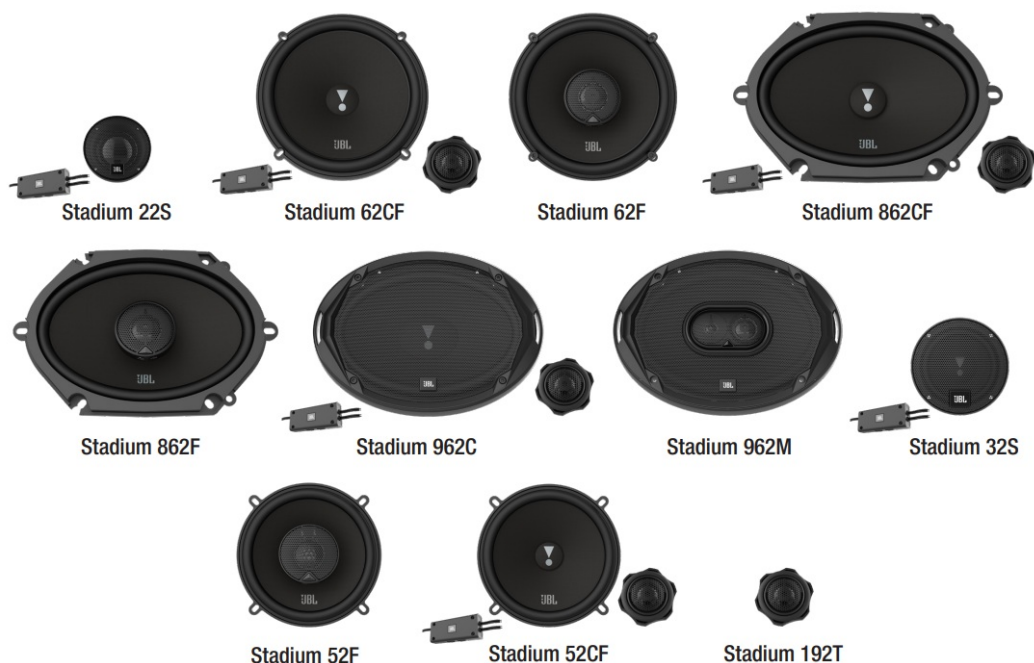


## Ultimate Car Audio by JBL.

JBL's Stadium Series speakers – available in 2", 3", 5-1/4", 6-1/2", 6" x 8", 4" x 6", 6" x 9", and 3/4" – bring iconic JBL sound that can only come from a 75-year pedigree of audio excellence to virtually any car on the road. Stadium's Plus One™ fiberglass woofers deliver high-output, deep and robust bass. The high-resolution 3/4" edge driven textile dome tweeters deliver soaring highs up to 40kHz. 2" and 3" midranges are available to upgrade two-way component systems into three-way. The compact 3" midrange speakers also offer a perfect plug-and-play solution with low frequency response to 300Hz, and high sensitivity.

## Features

- 40kHz High-resolution Aluminum Dome Tweeter
- Patented Plus One™ Glass Fiber Woofers
- 0dB or -3dB Tweeter Output Level Control
- UniPivot and Angled Tweeter
- 3-way Upgradability
- Super Compact Design and High Sensitivity 3" Midrange Speaker
- Sleek and Powerful Industry Design
- Slim and Smart Crossover Design



## Features and Benefits

### 40kHz High-resolution Aluminum Dome Tweeter

Stadium edge-driven aluminum dome tweeters equipped with oversized voice coils deliver unforgettable audio experience with impressive thermal power handling and 40kHz high resolution. Turn every drive into your personal concert.

### Patented Plus One™ Glass Fiber Woofers

Patented Plus One™ fiberglass woofer cones leverage lighter weight and increased stiffness for a visceral bass experience for the whole body.

Dare to listen.

### 0dB or -3dB Tweeter Output Level Control

The push-button on the angled tweeter allows tweeter output level control of 0dB or -3dB to optimize system linearity based on installation location.

### UniPivot and Angled Tweeter

For 5-1/4", 6-1/2" and 6" x 8" coaxial models, the tweeters are angled and can be rotated 270° after installation on most models. This gives you imaging options and the ability to elevate the soundstage on low mounted speakers.

### 3-way Upgradability

Looking to 3-way component system upgrade? Stadium 2-way component system crossovers are equipped with 2-way and 3-way selections, giving you the flexibility to add the optional 2" or 3" midrange with perfect tonal balance.

### Super Compact Design and High Sensitivity 3" Midrange Speaker

Stadium 3" midrange delivers low-frequency response to 300Hz while keeping high sensitivity over 89dB. The super compact design and premium performance allows the midrange to fit more vehicles without sacrificing any of your audio experience.

### Sleek and Powerful Industry Design

Intelligent design that complements the aesthetic of any car while filling it with premium sound.

### Slim and Smart Crossover Design

Stadium component systems all have very slim crossovers, which equipped with connection cable for easy



installation. The push-button on crossover allows tweeter output level control of 0dB or -3dB to optimize system linearity based on installation location.

## **What's in the box:**

### **STADIUM 22S**

- 2x Midrange driver
- 2x Grilles
- 2x Crossovers
- 2x Cables
- 2x Custom Fit Mounting Adapters
- 2x Foam gaskets
- 24x Screws
- 8x Speed clips
- 1x Allen head bit (2.5mm)
- 2x JBL logo badges
- 2x Brand stickers
- Owner's manual

### **STADIUM 62CF**

- 2x Speakers
- 2x Plastic multi-hole adapter rings
- 2x Foam gaskets
- 2x Crossovers
- 2x Tweeters
- 2x Threaded flush-mount adapters
- 2x Plastics locking nuts
- 2x Surface-mount cups
- 2x Starfish tweeter mounts
- 30x Screws
- 16x Speed clips
- 1x Allen head bit (2.5mm)
- 2x JBL logo badges
- 2x Brand stickers
- Owner's manual

### **STADIUM 62F**

- 2x Speakers
- 2x Plastic multi-hole adapter rings
- 2x Foam gaskets
- 16x Screws
- 8x Speed clips

- 2x JBL logo badges
- 2x Brand stickers
- Owner's manual

#### **STADIUM 862CF**

- 2x Speakers
- 2x Spacers
- 2x Foam gaskets
- 2x Crossovers
- 2x Tweeters
- 2x Threaded flush-mount adapters
- 2x Plastic locking nuts
- 2x Surface-mount cups
- 2x Starfish tweeter mounts
- 22x Screws
- 16x Speed clips
- 1x Allen head bit (2.5mm)
- 2x JBL logo badges
- 2x Brand stickers
- Owner's manual

#### **STADIUM 862F**

- 2x Speakers
- 2x Spacers
- 2x Foam gaskets
- 8x Screws
- 8x Speed clips
- 2x JBL logo badges
- 2x Brand stickers
- Owner's manual

#### **STADIUM 962C**

- 2x Speakers
- 2x Grilles
- 2x Spacers
- 2x Foam gaskets
- 2x Crossovers
- 2x Tweeters
- 2x Threaded flush-mount adapters
- 2x Plastic locking nuts
- 2x Surface-mount cups



- 2x Starfish tweeter mounts
- 22x Screws
- 16x Speed clips
- 1x Allen head bit (2.5mm)
- 2x JBL logo badges
- 2x Brand stickers
- Owner's manual

## **STADIUM 962M**

- 2x Speakers
- 2x Grilles
- 2x Spacers
- 2x Foam gaskets
- 8x Screws
- 8x Speed clips
- 2x JBL logo badges
- 2x Brand stickers
- Owner's manual

## **STADIUM 32S**

- 2x Midrange driver
- 2x Grilles
- 2x Crossovers
- 2x Cables
- 2x Foam gaskets
- 16x Screws
- 8x Speed clips
- 1x Allen head bit (2.5mm)
- 2x JBL logo badges
- 2x Brand stickers
- Owner's manual

## **STADIUM 52F**

- 2x Speakers
- 2x Foam gaskets
- 8x Screws
- 8x Speed clips
- 2x JBL logo badges
- 2x Brand stickers
- Owner's manual

## **STADIUM 52CF**

- 2x Speakers
- 2x Foam gaskets
- 2x Crossovers
- 2x Tweeters
- 2x Threaded flush-mount adapters
- 2x Plastics locking nuts
- 2x Surface-mount cups
- 2x Starfish tweeter mounts
- 22x Screws
- 16x Speed clips
- 1x Allen head bit (2.5mm)
- 2x JBL logo badges
- 2x Brand stickers
- Owner's manual

## **STADIUM 192T**

- 2x Tweeters
- 2x Threaded flush-mount adapters
- 2x Plastic locking nuts
- 2x Surface-mount cups
- 2x Starfish tweeter mounts
- 6x Screws
- 2x Crossovers
- 2x JBL logo badges
- 2x Brand stickers
- Owner's manual

## **Technical Specifications:**

### **STADIUM 22S**

#### **2" (50mm) PEI Dome Midrange with**

- Bandpass Crossover Enclosure
- Power Handling: 50Wrms, 150W peak
- Sensitivity (@ 2.83V): 94dB
- Frequency Response: 500Hz – 7kHz
- Impedance: 3.0 ohms
- Gross weight: 0.82kg

### **STADIUM 62CF**

#### **6-1/2" (165mm) Two-way Component Speaker System**

- Power Handling: 110Wrms, 330W peak
- Sensitivity (@ 2.83V): 93dB
- Frequency Response: 45Hz – 40kHz
- Impedance: 3.0 ohms
- Gross weight: 2.9kg

#### **STADIUM 62F**

##### **6-1/2" (165mm) Two-way Car Speaker**

- Power Handling: 85Wrms, 255W peak
- Sensitivity (@ 2.83V): 93dB
- Frequency Response: 45Hz – 40kHz
- Impedance: 3.0 ohms
- Gross weight: 2.56kg

#### **STADIUM 862CF**

##### **6" x 8" (147mm x 205mm) Two-way Component Speaker System**

- Power Handling: 120Wrms, 360W peak
- Sensitivity (@ 2.83V): 93dB
- Frequency Response: 40Hz – 40kHz
- Impedance: 3.0 ohms
- Gross weight: 3.02kg

#### **STADIUM 862F**

##### **6" x 8" (147mm x 205mm) Two-way Car Speaker**

- Power Handling: 100Wrms, 300W peak
- Sensitivity (@ 2.83V): 93dB
- Frequency Response: 40Hz – 40kHz
- Impedance: 3.0 ohms
- Gross weight: 2.84kg

#### **STADIUM 962C**

##### **6" x 9" (168mm x 240mm) Two-way Component Speaker System**

- Power Handling: 145Wrms, 435W peak
- Sensitivity (@ 2.83V): 94dB
- Frequency Response: 35Hz – 40kHz
- Impedance: 3.0 ohms
- Gross weight: 5.26kg

#### **STADIUM 962M**

##### **6" x 9" (168mm x 240mm) Three-way Car Speaker**

- Power Handling: 120Wrms, 360W peak
- Sensitivity (@ 2.83V): 94dB
- Frequency Response: 35Hz – 40kHz
- Impedance: 3.0 ohms
- Gross weight: 5.02kg

### **STADIUM 32S**

#### **3" (89mm) Midrange with Bandpass**

- Crossover Enclosure
- Power Handling: 55Wrms, 165W peak
- Sensitivity (@ 2.83V): 93dB
- Frequency Response: 200Hz – 15kHz
- Impedance: 3.0 ohms
- Gross weight: 0.78kg

### **STADIUM 52F**

#### **5-1/4" (133mm) Two-Way Car Speaker**

- Power Handling: 60Wrms, 180W peak
- Sensitivity (@ 2.83V): 93dB
- Frequency Response: 55Hz – 40kHz
- Impedance: 3.0 ohms
- Gross weight: 2.2kg

### **STADIUM 52CF**

#### **5-1/4" (133mm) Two-Way Component Speaker System**

- Power Handling: 80Wrms, 240W peak
- Sensitivity (@ 2.83V): 93dB
- Frequency Response: 55Hz – 40kHz
- Impedance: 3.0 ohms
- Gross weight: 2.52kg

### **STADIUM 192T**

#### **3/4" (19mm) Edge-Driven Aluminum Dome Tweeter**

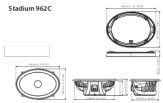
- Power Handling: 50Wrms, 150W peak
- Sensitivity (@ 2.83V): 93dB
- Frequency Response: 2kHz – 40kHz
- Impedance: 3.0 ohms
- Gross weight: 0.306kg



HARMAN International Industries, Incorporated  
8500 Balboa Boulevard, Northridge, CA 91329 USA  
[www.jbl.com](http://www.jbl.com)

© 2020 HARMAN International Industries, Incorporated. All rights reserved. JBL is a trademark of HARMAN International Industries, Incorporated, registered in the United States and/or other countries. Features, specifications and appearance are subject to change without notice.

## Documents / Resources

 A small image showing the components of the JBL 962C speaker system, including a large circular speaker, a smaller circular speaker, and two rectangular satellite speakers. The text "Stadium 962C" is visible in the top left corner of the image.	<p><a href="#">JBL 962C 6"x9" Component Speaker System</a> [pdf] Owner's Manual 962C, 6 x9 Component Speaker System, Component Speaker System, Speaker System, Component Speaker, Speaker, 962C</p>
--	---

## References

-  [Official JBL Store - Speakers, Headphones, and More!](#)

Manuals+.