



JBC TRA Automatic Soldering Iron for Robot Instruction Manual

[Home](#) » [JBC](#) » JBC TRA Automatic Soldering Iron for Robot Instruction Manual 

JBC

TRA Automatic Soldering Iron for Robot
Instruction Manual



This manual corresponds to the following references:

- TRA245-B works with R245 cartridges

- TRA470-B works with R470 cartridges

Contents

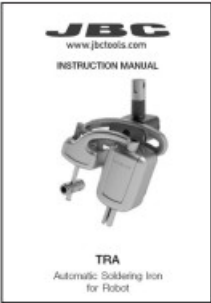
- 1 Packing List
- 2 Assembly: GSFR Tube to SFR* and TRA*
- 3 Connections
- 4 Dimensions
- 5 Centering Jig
- 6 Work Place Example
- 7 Compatibility
- 8 Maintenance
- 9 Safety
- 10 Specifications
- 11 Documents / Resources
 - 11.1 References
- 12 Related Posts

Packing List

Either Ref. TRA245-B or Ref. TRA470-B is included.



Automatic Soldering Iron for Robot 1 unit

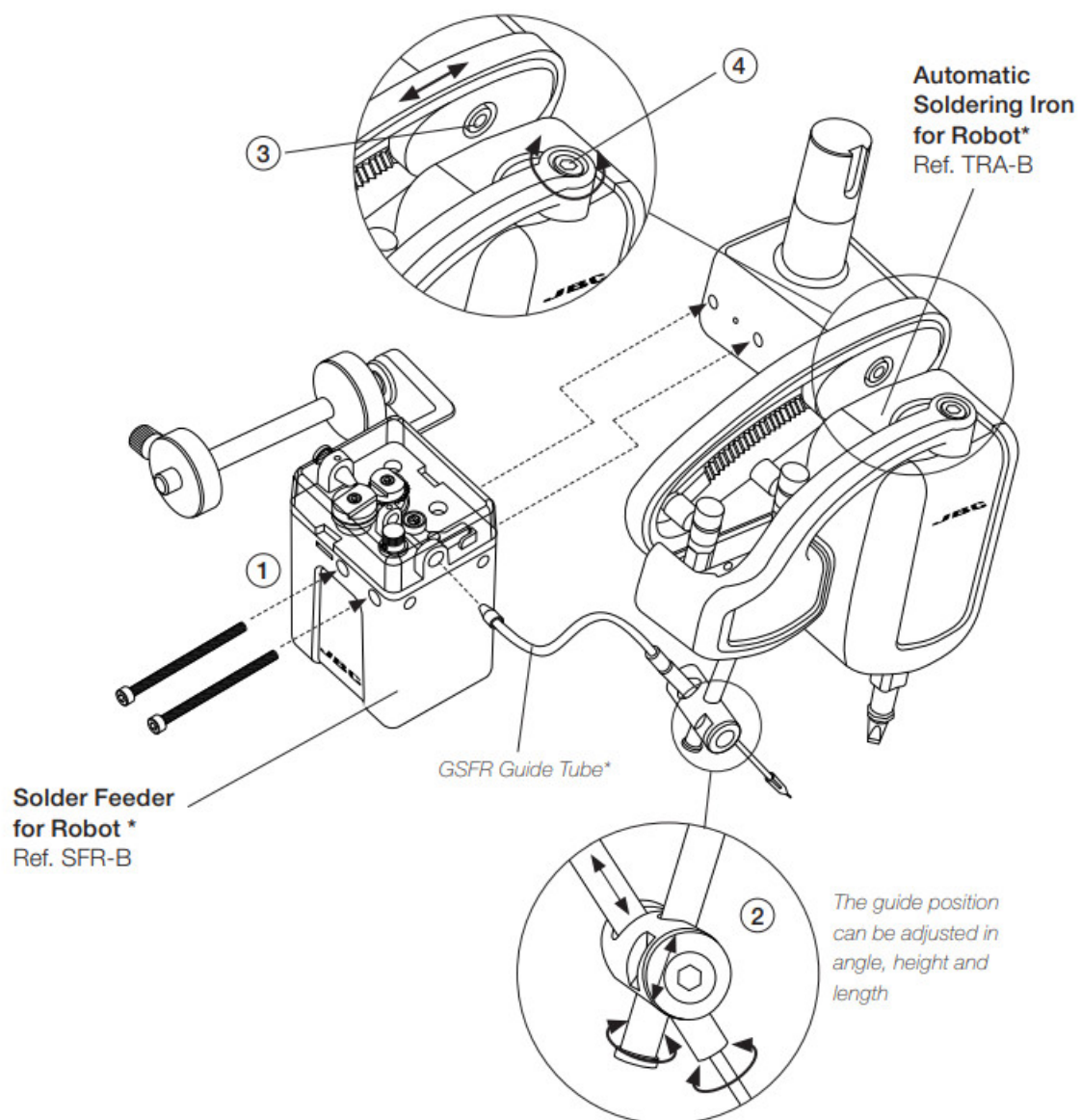


Manual 1 unit
Ref. 0027874

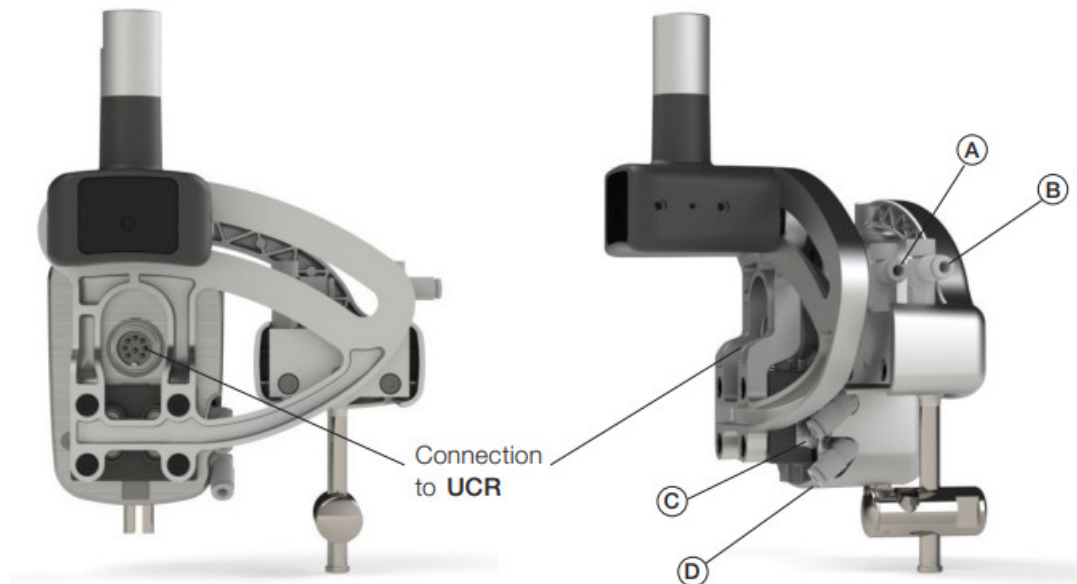
Assembly: GSFR Tube to SFR* and TRA*

1. Assemble SFR and the appropriate GSFR Guide Tube to TRA as described in the SFR instructions manual.
2. Adjust TRA guide position in angle, height, and length, then tighten the bolt to lock your settings.

3. Adjust the TRA angle to its desired position by using the indicated bolt.
4. Adjust the TRA guide arm position for your application by using the indicated bolt.



Connections



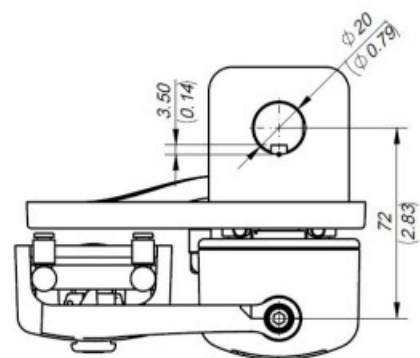
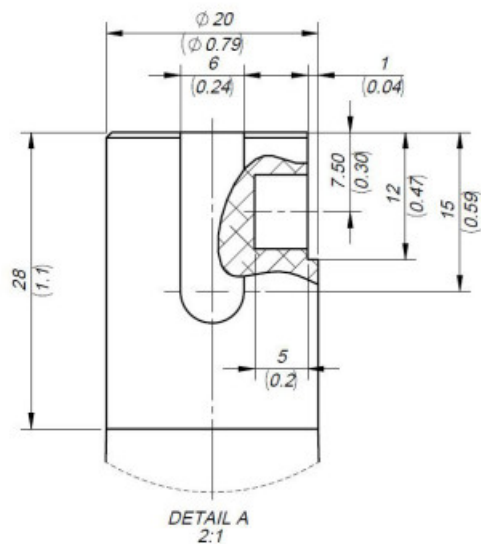
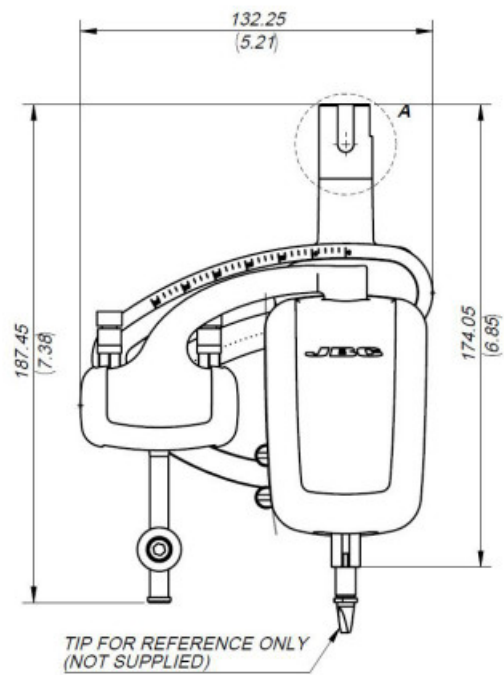
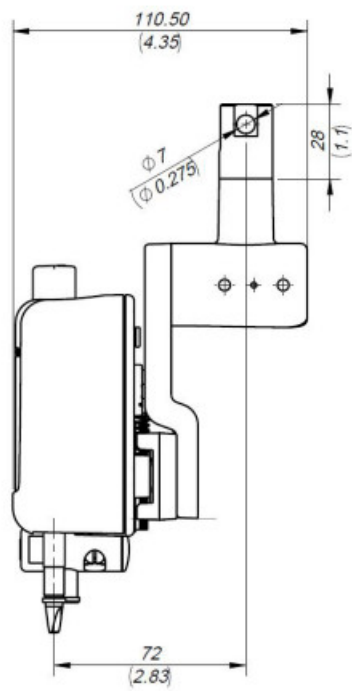
Gripper Actuator	
Fluid	Air
Applicable tubing	04mm
Operating pressure	1,5 to 7 bar 20 to 100 psi

A. Air tube connection: Close arm to soldering position.	C. Air tube connection: Close grippers.
B. Air tube connection: Open arm to the service position.	D. Air tube connection: Open grippers.

Note: JBC recommends bi-stable valves for the grippers to prevent the cartridge from falling out in case of an emergency stop or power cut.

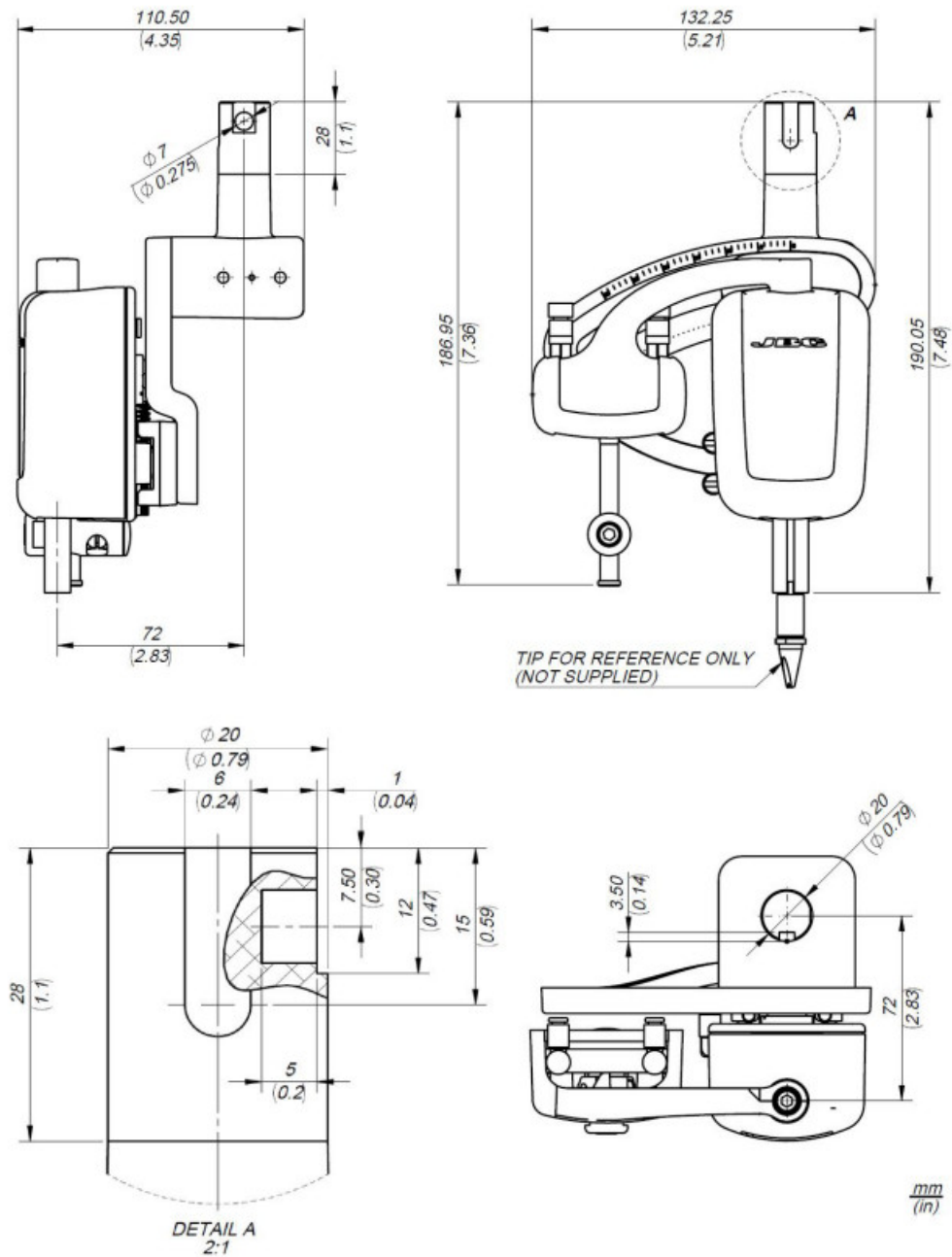
Dimensions

TRA245-B



mm
(in)

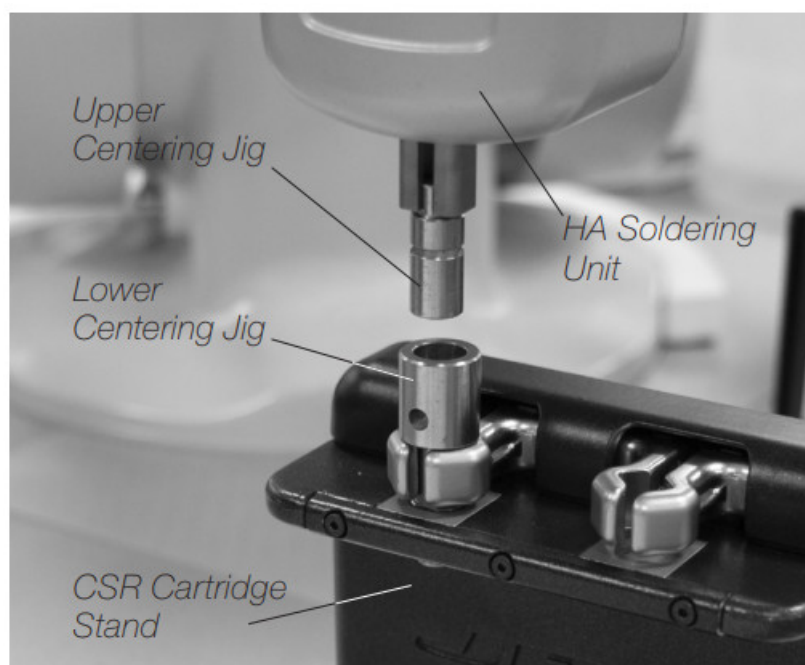
TRA470-B



Centering Jig

In order to align the CSR to your Soldering Head and set your cartridge pick-up points use JBC's Centering Jig.

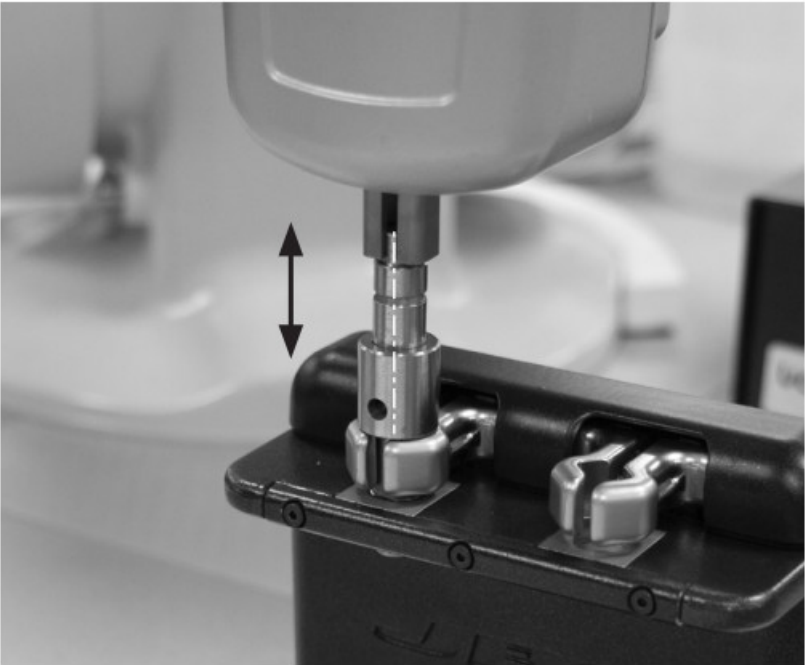
Install both, lower and upper centering jigs, into CSR Cartridge Stand and HA Soldering Unit as shown.



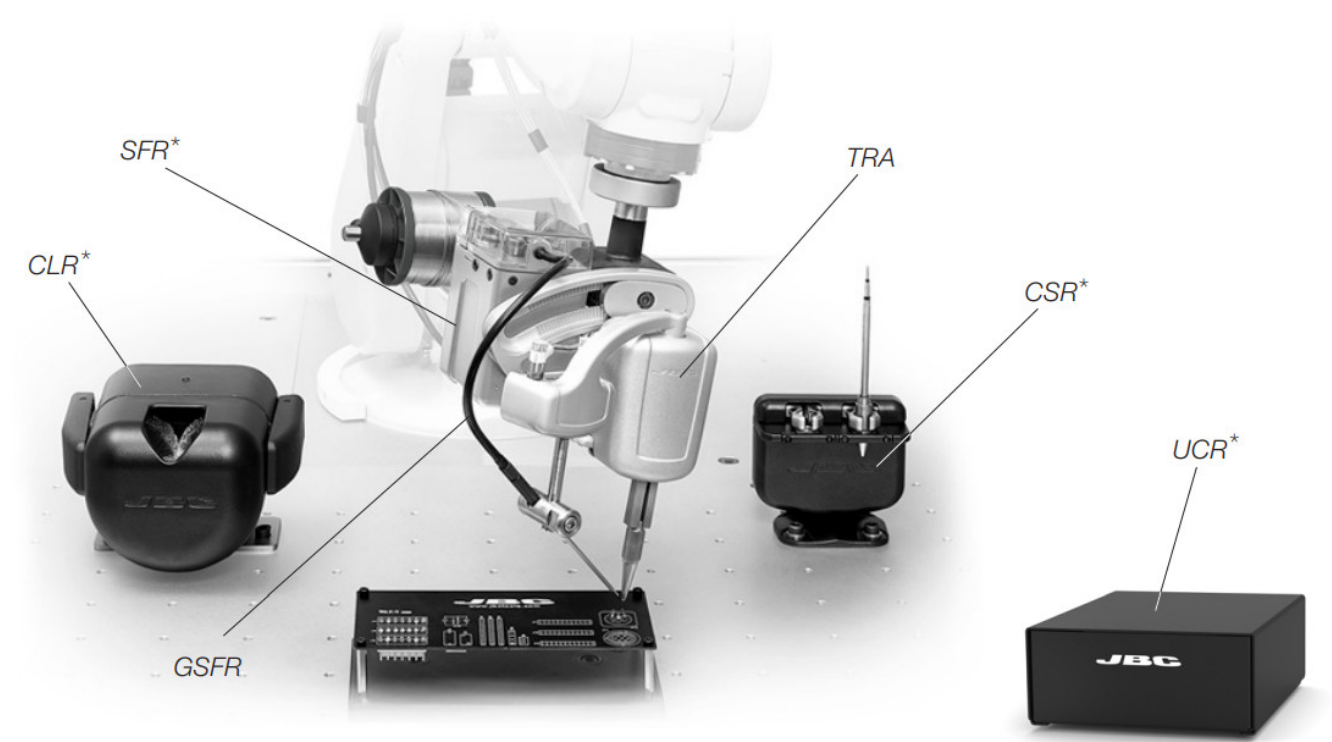
Insert the centering jig completely. Set this point as the pick-up point position. The Soldering Head has to move in a vertical line from this point when inserting or removing cartridges.



Adjust the Soldering Head position until the upper and lower centering jigs are aligned. It must be possible to move in and out smoothly.



Work Place Example



*Not included, sold separately

Compatibility

Soldering Irons	Cartridge Range		Control Unit		Cartridge Stand	
	R245	R470	UCR245	UCR470	CS2R245	CS2R470
TRA245	•		•		•	
TRA470		•		•		•

SFR, GSFR, and CLMR are compatible with both R245 and R470 cartridges.

Maintenance

- Before carrying out maintenance, always unplug the tool.
- Use a damp cloth to clean the tool. Alcohol can only be used to clean the metal parts.
- Periodically check that the metal parts of the tool are clean so the control unit can detect the tool status.
- Periodically check all cable and tube connections.
- Maintain tip surface clean and tinned prior to storage in order to avoid tip oxidation.
Rusty and dirty surfaces reduce heat transfer to the solder joint.
- Replace any defective or damaged part. Use original JBC spare parts only.
- Repairs should be performed only by a JBC-authorized technical service.
- Under normal operating conditions, the air gripper's lifespan is 10 million cycles. It is recommended to replace it at the end of its lifespan.

Safety



It is imperative to follow safety guidelines to prevent electric shock, injury, fire or explosion.

- Do not use the soldering iron for any purpose other than soldering or rework. Incorrect use may cause a fire.
- Do not leave the appliance unattended when it is on.
- Be sure that the power supply is disconnected before changing any spare parts.
- The temperature of accessible surfaces may remain high after the unit is turned off.
Handle with care.
- Allow the cartridges to cool down before changing them.
- Heat can cause inflammable products to ignite even when not visible.
- Avoid flux coming into contact with skin or eyes to prevent irritation.
- Be careful with the fumes produced when soldering.
- Keep your workplace clean and tidy. Wear appropriate protection glasses and gloves when working to avoid personal harm.
- Utmost care must be taken with liquid tin waste which can cause burns.

Notes

Specifications

TRA
Automatic Soldering Iron for Robot
Ref.: TRA245-B
Ref.: TRA470-B

- Operating Pressure

TRA245-A

- Total Net Weight:
- Package Dimensions/Weight: (L x W x H)

TRA470-A

- Total Net Weight:
- Package Dimensions/Weight: (L x W x H)

1.5 to 7 bar / 20 to 100 psi

700 g / 1.54 lb
 221 x 136 x 126 mm / 909 g
 8.70 x 5.35 x 4.96 in / 2.00 lb

716 g / 1,58 lb
 220 x 213 x 160 mm / 1000 g
 8.66 x 8.39 x 6.30 in / 2.20 lb

Complies with CE standards.
 ESD protected.

JBC

Warranty

JBC's 2-year warranty covers this equipment against all manufacturing defects, including the replacement of defective parts and labor.

The warranty does not cover product wear or misuse.

In order for the warranty to be valid, equipment must be returned, postage paid, to the dealer where it was purchased.




— This product should not be thrown in the garbage. In accordance with the European directive 2012/19/EU, electronic equipment at the end of its life must be collected and returned to an authorized recycling facility.



www.jbctools.com

Documents / Resources

	<p>JBC TRA Automatic Soldering Iron for Robot [pdf] Instruction Manual TRA Automatic Soldering Iron for Robot, TRA, Automatic Soldering Iron for Robot</p>
---	---

References

-  [JBC Soldering and Rework equipment for electronics](#)

Manuals+.