



JBC TESE-QA Precision Hot Air Station extractor desk Instruction Manual

[Home](#) » [JBC](#) » JBC TESE-QA Precision Hot Air Station extractor desk Instruction Manual 

Contents

- 1 JBC TESE-QA Precision Hot Air Station extractor desk
- 2 Packing List
- 3 Features
- 4 JT / TE Work Screen
 - 4.1 Advanced functionalities
 - 4.2 System Notifications
 - 4.3 Adjustable Stand
- 5 Operation
- 6 Protectors & Extractors
- 7 Extractor Desk
- 8 Using the Thermocouple type K
- 9 Quick Nozzle Changer
- 10 Replacing the Heating Element
- 11 Changing the TE-TB Heater Hose Set
- 12 Maintenance
- 13 Safety
- 14 Warranty
 - 14.1 Disposal
- 15 Documents / Resources
- 16 Related Posts

JBC

JBC TESE-QA Precision Hot Air Station extractor desk



Packing List

The following items are included:

- TESE Control Unit1 unit
Ref. TESE-1A (100V / 120V)
TESE-2A (230V)



- Stand1 unit
Ref. TE-SE



- Heater hose set1 unit
Ref. TE-TB (100V / 120V / 230V)



- Thermocouple type K1 unit
Ref. PH218



- Nozzles 3 units
Ref. TN9209 Ø 3mm (0.12 in)
TN9208 Ø 4mm (0.16 in)
TN9080 Ø 5mm (0.20 in)



- Kapton Tape 1 unit
Ref. PH217



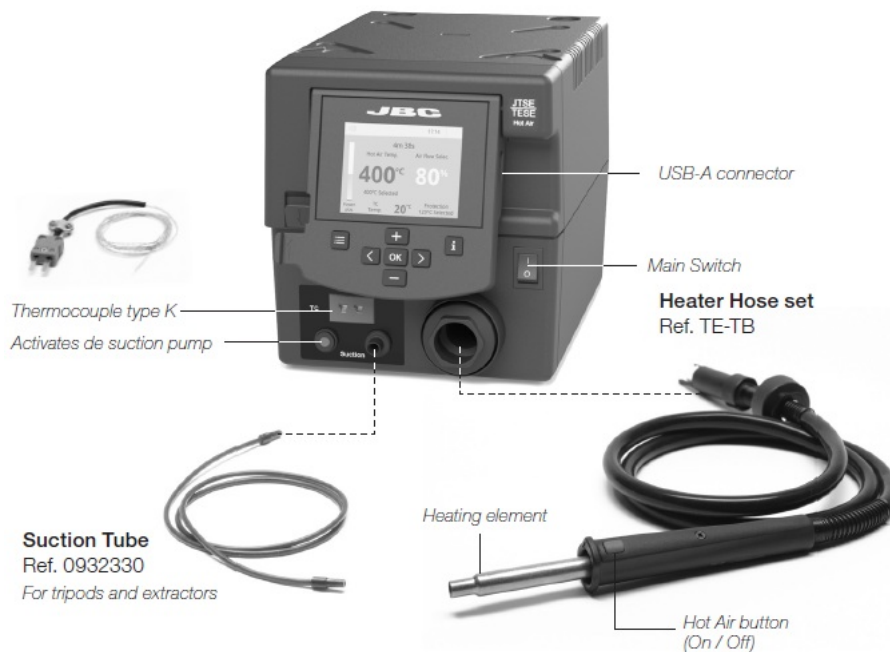
- Power cable1 unit
Ref. 0009417 (100V / 120V)
0009401 (230V)



- Manual1 unit
Ref. 0019044



Features

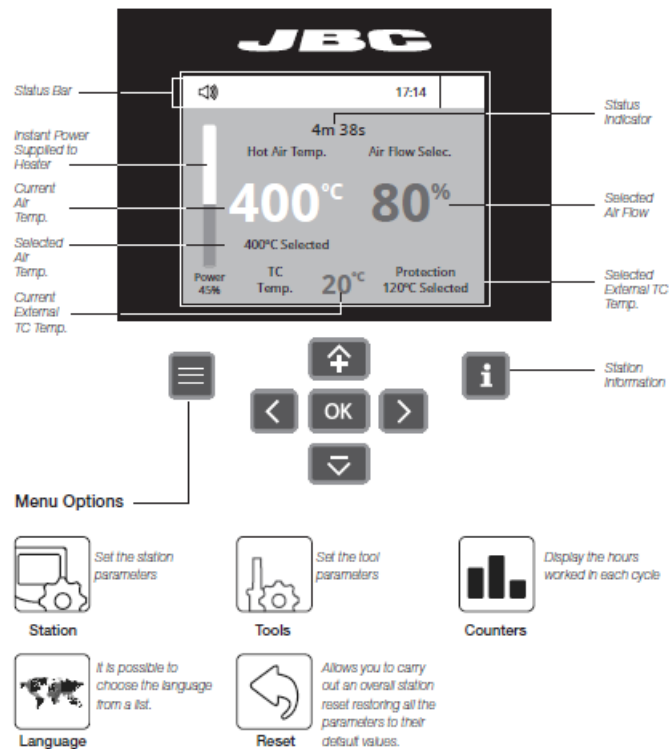




JT / TE Work Screen

The JT/TE offers an intuitive user interface which provides quick access to station parameters.

Default PIN: 0105



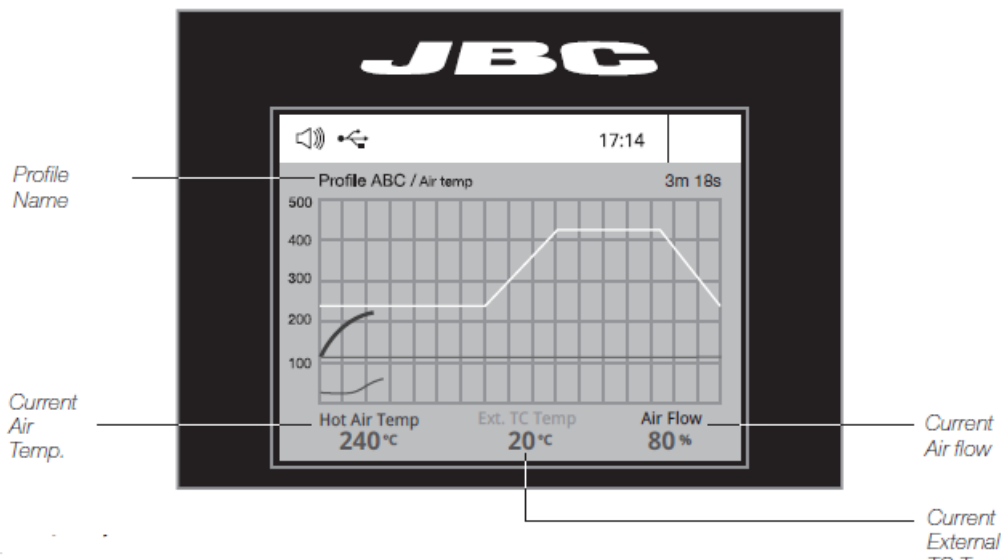
Troubleshooting

Station troubleshooting available on the product page at www.jbctools.com

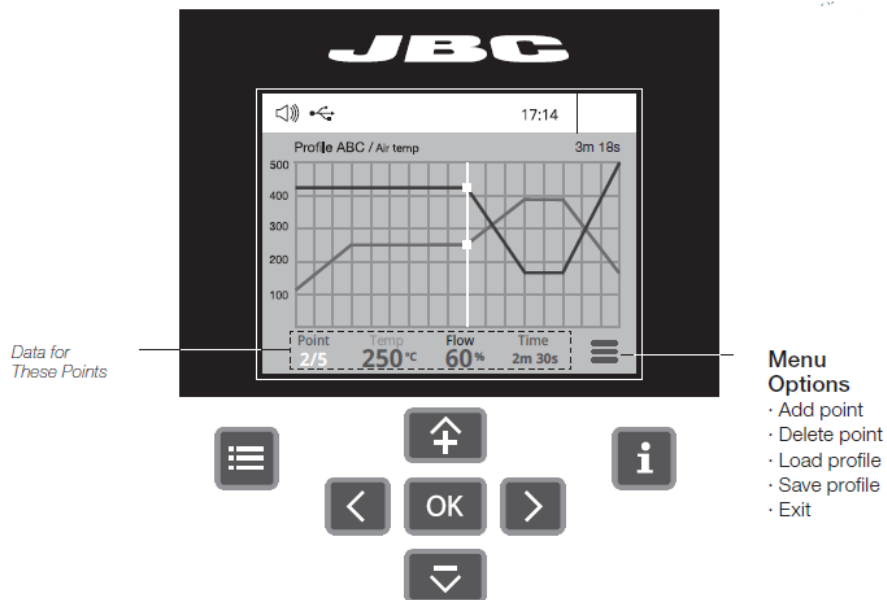
Advanced functionalities

To work with profiles it is essential to use the RWB / RWS / RWT rework arms. The Rework Arms supports the Hot Air Heater maintaining the distance and position to the component.

Profile : In this mode you can set up or edit as many as 25 profiles of temperature and air flow.

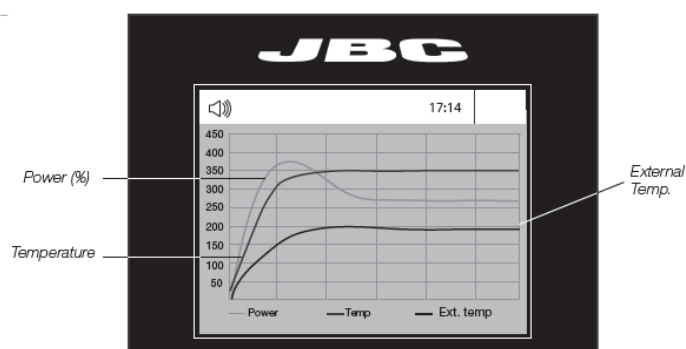


Edit Mode:



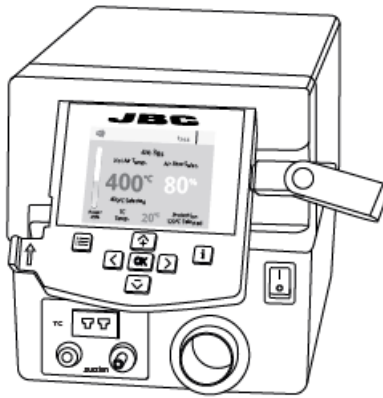
By pressing Graphics in the main MENU, temperature and power figures in real time are displayed. This helps you decide which tip to use to obtain the best quality solder joints.

Graphics:



- The first system to optimize traceability in soldering – Get greater quality and control in your production – Manage your whole soldering process remotely in real time

- Export Graphics Insert a USB flash drive into the USB-A connector to save your soldering process in csv format.



- Station Update Download the JBC Update File from www.jbctools.com/software.html Insert the USB flash drive with the file down-loaded to the station.

System Notifications

The following icons will be displayed on the screen's status bar.

- USB flash drive is connected.
- Station is controlled by a PC.
- Station is controlled by a robot.
- Station software update.
- Press INFO to start the process. Warning. Press INFO for failure description.
- Error. Press INFO for failure description, the type of error and how to proceed.

Adjustable Stand

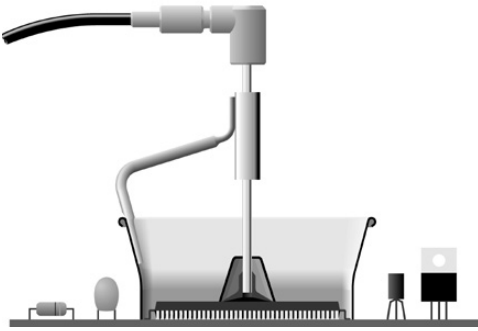
Adjust the tool holder angle to suit your work position.



Operation

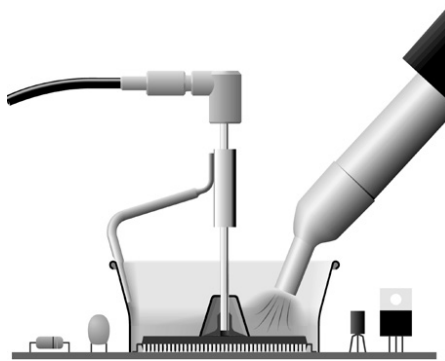
1. Placing

Position the extractor with the appropriate suction cup and press the suction button.



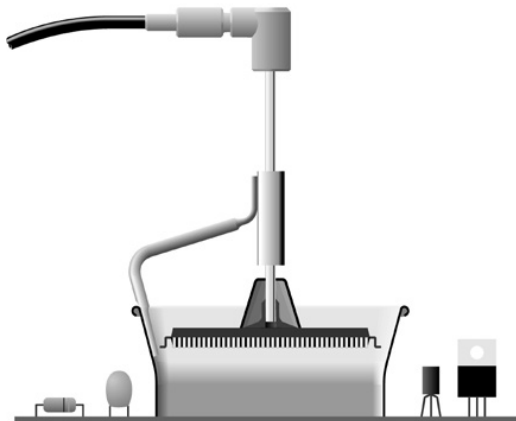
2. Heating

Heat the component.



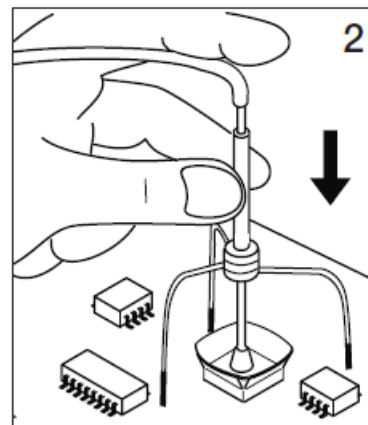
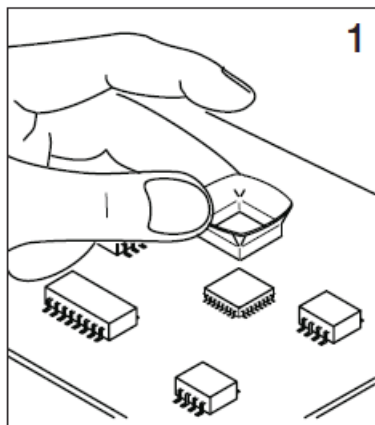
3. Extracting

The component lifts off automatically when the solder melts.

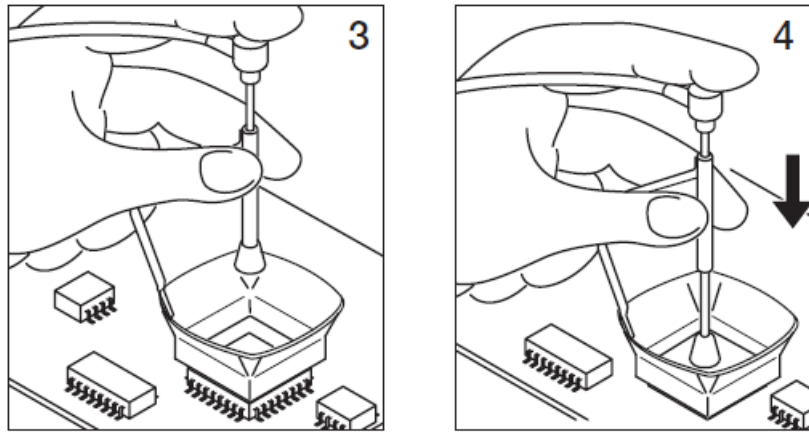


Protectors & Extractors

- For small components (fig. 1 and 2). We recommend using the protector + tripod



- For large components (fig. 3 and 4). We recommend using the manual extractors



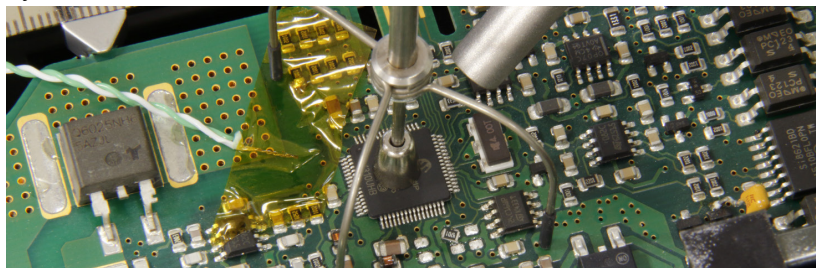
Extractor Desk

This accessory lets you quickly switch between different models of extractors and protectors. There are two drawers for storage.



Using the Thermocouple type K

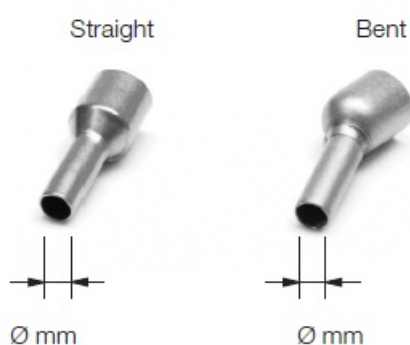
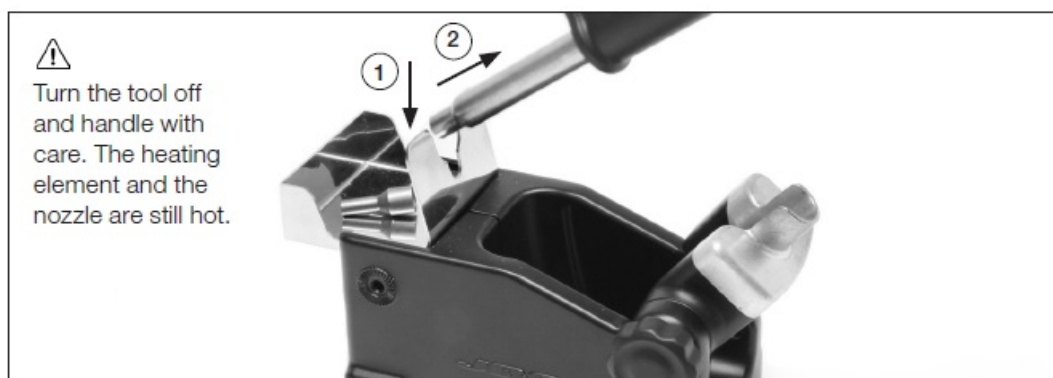
Connect a TC type K (PH218) to the station and use it as a protection or regulation sensor. You can define its use mode by means of the “Ext TC mode” option in the “Tool” menu. You can choose from two work modes:
 Regulation: the station regulates the air temperature automatically to maintain the External Thermocouple (TC) temperature. Protection: the station cuts the air supply off when the External Thermocouple (TC) temperature is reached. Fix the TC with Kapton Tape (Ref. PH217) as near as possible to the component being worked on. If Kapton tape is not ESD you must use an ionizer.



IPC* does not recommend exceeding ramp-up rates over 3 – 4 °C / sec (5 – 7 °F / sec) so as to reduce the risk of thermal stress on the PCB. IPC was founded in the U.S. in 1957 as the Institute for Printed Circuits.

Quick Nozzle Changer

Changing nozzles quickly and safely.

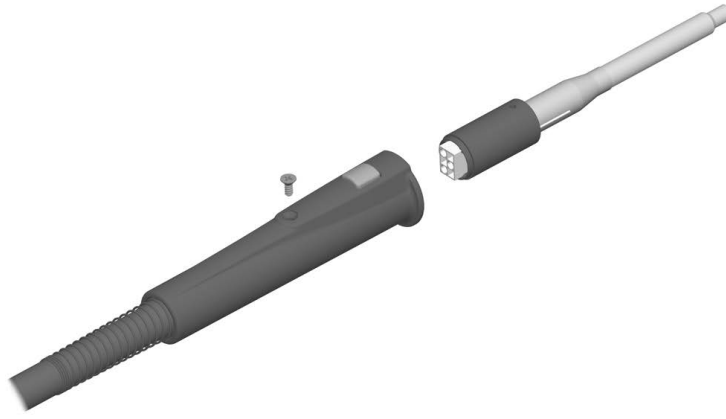


*	Ref.	Shape	Ø Size (mm)	Ø Size (in)
*	TN9209	Straight	Ø 3	Ø 0.12
*	TN9208	Straight	Ø 4	Ø 0.16
*	TN9080	Straight	Ø 5	Ø 0.20
	TN9787	Bent	Ø 3	Ø 0.12
	TN9785	Bent	Ø 4	Ø 0.16
	TN9782	Bent	Ø 5	Ø 0.20
	TN8851	Bent	Ø 3mm 45°	Ø 0.12 45°
	TN8905	Bent	Ø 4 mm 45°	Ø 0.16 45°
	TN9561	Bent	Ø 5 mm 45°	Ø 0.20 45°

Replacing the Heating Element

Only perform this operation when the element is cold and the unit is disconnected from the mains.

1. Loosen the screw.
2. Pull the heating element away from the handle.
3. Connect the new heating element, ensuring it is pushed all the way in.
4. Tighten the screw.



Changing the TE-TB Heater Hose Set

1. Ensure that the tool is turned off.
2. Use a spanner to unscrew the nut.
3. Make sure that the new heater tube fits into the grooves in the socket.
4. Tighten the screw.



Maintenance

Before carrying out maintenance, always allow the equipment to cool.

- Clean the station screen with a glass cleaner or a damp cloth.
- Use a damp cloth to clean the casing and the tool. Alcohol can only be used to clean the metal parts.
- Periodically check that the metal parts of the tool and stand are clean so that the station can detect the tool status.
- Periodically check all cables and tubes.
- Replace a blown fuse as follows:
 - Pull off the fuse holder and remove the fuse. If necessary use a tool to lever it off.
 - Insert the new fuse into the fuse holder and return it to the station.

- Connectors: USB-A / USB-B RJ12 for RS232 Pedal for P-005
- Control Unit Weight: 1,9 kg (10.86 lb)
- Control Unit Dimensions: 148 x 184 x 140 mm (5.83 x 7.24 x 5.51 in)
- Total Package: 474 x 368 x 195 mm / 4,62 kg 18.7 x 14.5 x 7.7 in / 10.2 lb

Complies with CE standards.
ESD protected.


Warranty

JBC's 2 year warranty covers this equipment against all manufacturing defects, including the replacement of defective parts and labour. Warranty does not cover product wear or misuse. In order for the warranty to be valid, equipment must be returned, postage paid, to the dealer where it was purchased. Get 1 extra year JBC warranty by registering here: <https://www.jbctools.com/productregistration/> within 30 days of purchase.

Disposal

This product should not be thrown in the garbage. In accordance with the European directive 2012/19/EU, electronic equipment at the end of its life must be collected and returned to an authorized recycling facility.

Documents / Resources

 <p>JBC www.jbctools.com INSTRUCTION MANUAL</p> <p>Precision Hot Air Station without extractor desk PM: TESE-QA</p>	<p>JBC TESE-QA Precision Hot Air Station extractor desk [pdf] Instruction Manual TESE-QA Precision Hot Air Station extractor desk, Precision Hot Air Station extractor desk, extractor desk</p>
------------------------------------------------------------------------------------------------------------------------------------------------------------------------------------------------------------------------	---------------------------------------------------------------------------------------------------------------------------------------------------------------------------------------------------------------------