



JBC SL2020 Temperature Controlled Iron Instruction Manual

[Home](#) » [JBC](#) » JBC SL2020 Temperature Controlled Iron Instruction Manual 

Contents

- [1 JBC SL2020 Temperature Controlled Iron](#)
- [2 Specifications](#)
- [3 Operating Instruccions](#)
- [4 Long-Life Tips](#)
- [5 Documents / Resources](#)
- [6 Related Posts](#)

JBC

JBC SL2020 Temperature Controlled Iron



We appreciate the trust you have shown in JBC by purchasing this temperature-controlled soldering iron. It has been manufactured with the highest standards of quality to ensure reliable service. The SL2020 Ref. 2020200, temperature-controlled soldering iron incorporates an electronic control system on the handle, which possibilities his direct connection to the main.

Specifications

- Solid-state, electronic temperature control, with zero-point triac triggering.
- Supply voltage 230 V $\pm 10\%$
- Mains frequency is 50/60 Hz
- Power to maintain 300°C: 40 W
- Maximum power: 200 W
- Temperature range: 100...400°C $\pm 10\%$
- Time for 300 °C: 40 s
- Direct earthed connection: 120 at 240 V
- Long-life tip: R10D (Ref. 0300905)
- Weight without cable: 60 g
- Tip to ground resistance $< 1\Omega$
- Mains insulation: 20 M Ω at 400 °C

- Dielectric strength: 1500 V at 20 °C

Operating Instruccions

Using the screwdriver, adjust the temperature setting to suit your requirement and wait for the pilot light to flash regularly, meaning that the pre-set temperature has been reached.

Hints on Soldering

For good soldering results, it is advisable to bear the following norms:

- The components and the circuit should be clean and pre-tinned.
- The tip should be well tinned. Select, preferably, a temperature under 325°C

Cleaning the Tip

- Disconnect the soldering iron.
- Clean the area to be tinned to remove any oxide. We recommend using the metal brush Ref. 0297705 and the sponge

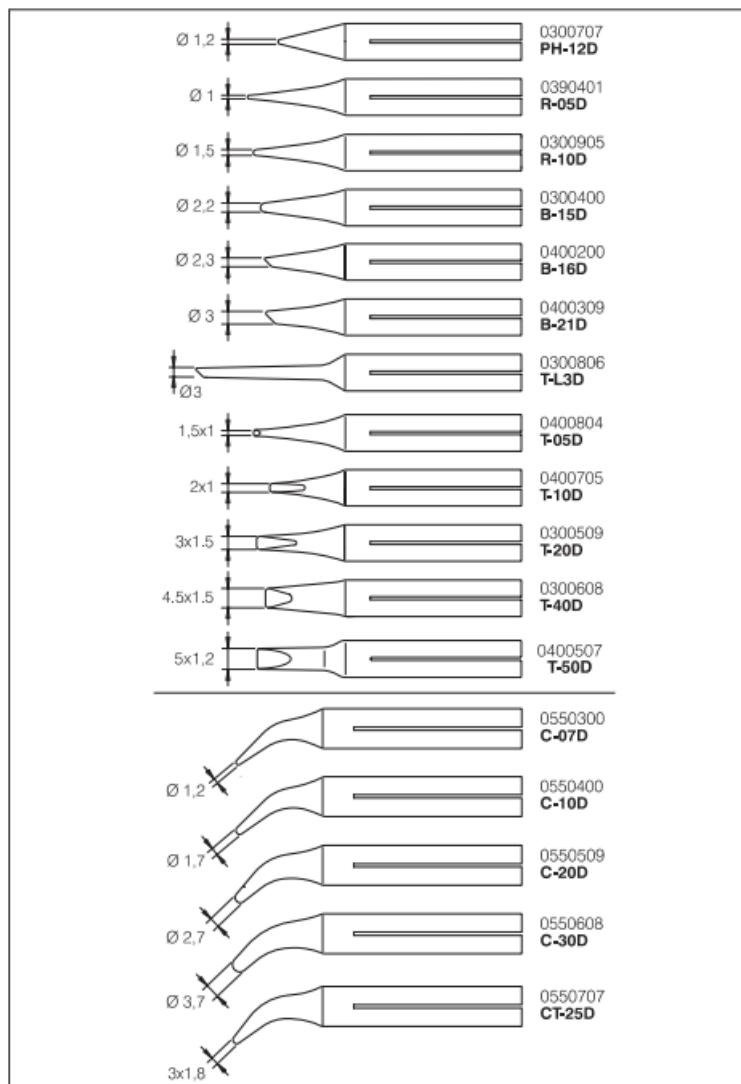
Ref. S6169, or fine sandpaper, very carefully to avoid spoiling the long-life tip's protective surface coating. Only deionized water (car battery water) should be used in order to wet the sponge. If normal water was to be used, it is very likely that the tip will become dirty due to the salts dissolved in the water

Changing the Tip

Use the tip removal device Ref. 0114108 (Fig. 1).

1. Remove the ring to release the tip.
2. Remove the tip by pulling the soldering iron lengthwise without forcing the element. Before fitting the new tip, clean the part of the heating element which is covered by the tip. This gets rid of any grime and facilitates fitting of the new tip.
3. Insert the new tip and make sure that it has penetrated fully home.

Long-Life Tips



0329920
DST ACCESSORY

Desoldering Tip Types

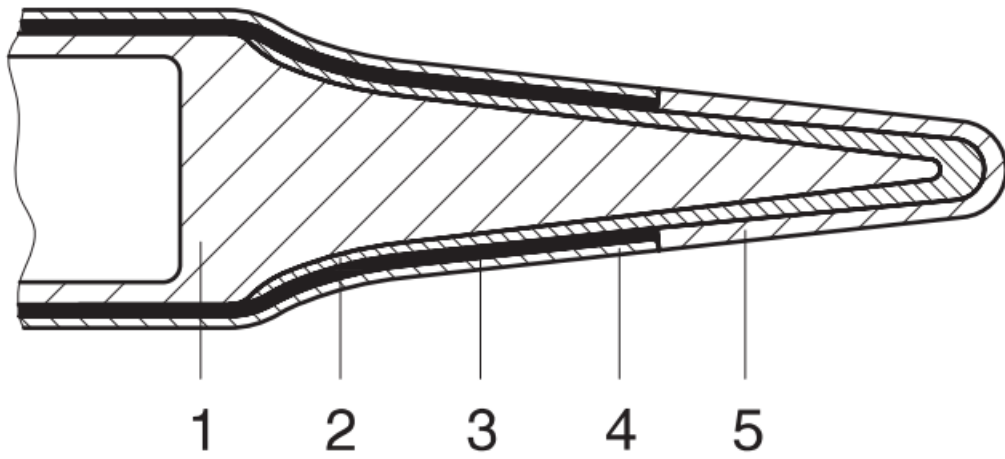
High thermal performance (Ref. HT):
This kind of tip has great heat-transmission capability. They are not quite as durable as the armoured long-life type.

Long-life (Ref. DE):
These tips are heavily armoured inside and out. They are very durable, though with lower heat-transmission.

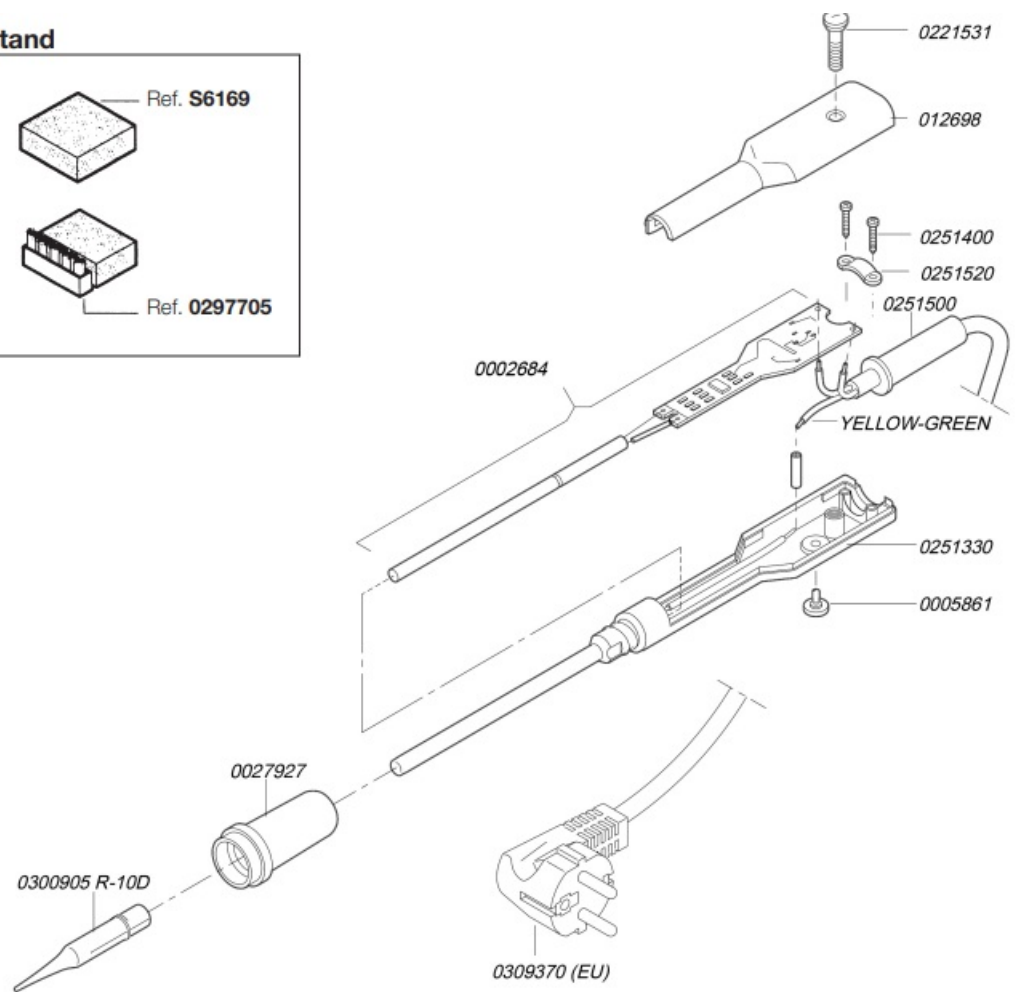
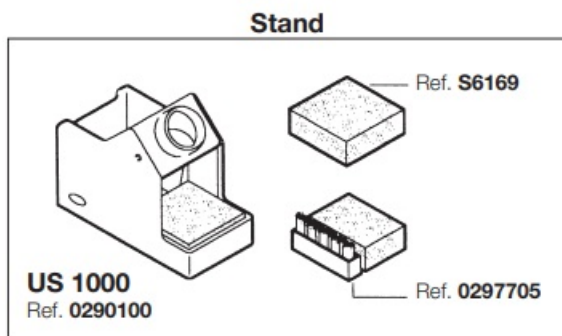
	Ø 0,7 Ø 1,7	Ø 0,7 Ø 2,2	Ø 1 Ø 2,7	Ø 1 Ø 2,7	Ø 1,3 Ø 2,7	Ø 1,3 Ø 3,2	Ø 1,6 Ø 3,8
HIGH THERMAL PERFORMANCE	0320705 07 HT	0320903 09 HT	0321100 30 HT	0321200 31 HT	0321400 32 HT	0321300 33 HT	0321500 35 HT
LONG LIFE	—	—	0320500 20 DE	0320005 21 DE	—	0320600 23 DE	0320800 25 DE

How are the JBC long-life tips manufactured?

All these protection layers avoid tin coming into contact with the copper basis and damaging it which gives such tip a 10 to 20 times longer working life than the traditional tip, while keeping its original shape without deformation by wear.

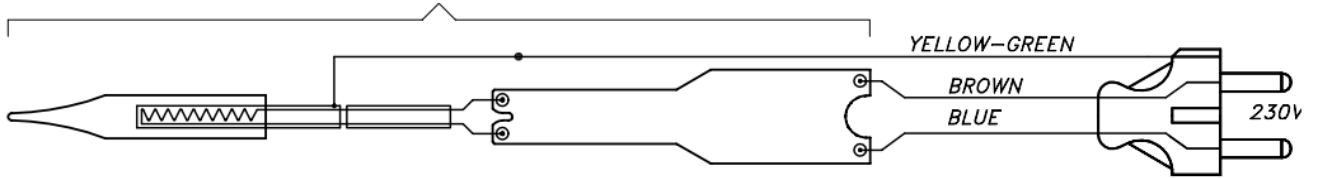


1. Copper core
2. Iron
3. Nickel
4. Chromium
5. Tin plate






Electric Wiring Diagram

SL 2020 230V CIRCUIT AND HEATING ELEMENT KIT
0002684



SL2020 Soldering Iron may be connected directly to any voltage supply between 120 and 240 V. When connected to 120 V, the temperature might drop to around 10%.

Documents / Resources

	JBC SL2020 Temperature Controlled Iron [pdf] Instruction Manual SL2020, Temperature Controlled Iron, SL2020 Temperature Controlled Iron
	JBC SL2020 Temperature Controlled Iron [pdf] User Manual SL2020, Temperature Controlled Iron, Controlled Iron, SL2020, Iron
	JBC SL2020 Temperature Controlled Iron [pdf] Instruction Manual SL2020, Temperature Controlled Iron, SL2020 Temperature Controlled Iron