

JBC
MS10 Front
Filters

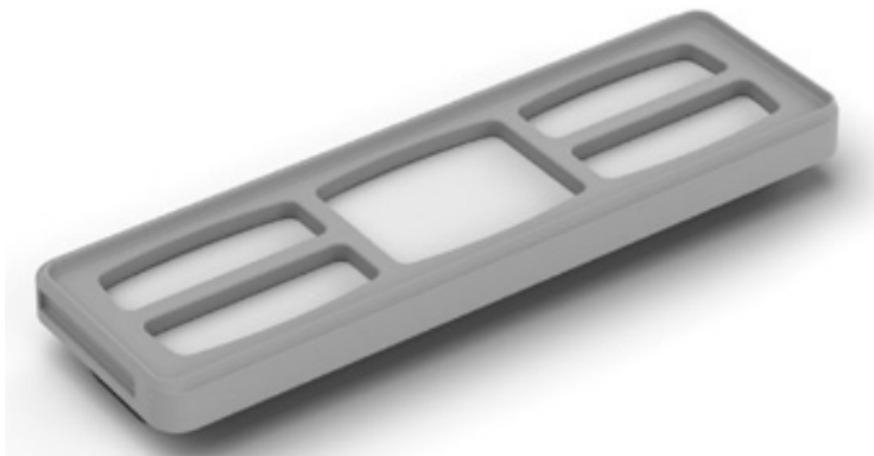


Contents

- [1 JBC MS10 Front Filters](#)
- [2 Product Specifications:](#)
- [3 Packing List](#)
- [4 Replacement](#)
- [5 Frequently Asked Questions](#)
- [6 Documents / Resources](#)
 - [6.1 References](#)
- [7 Related Posts](#)

JBC

JBC MS10 Front Filters



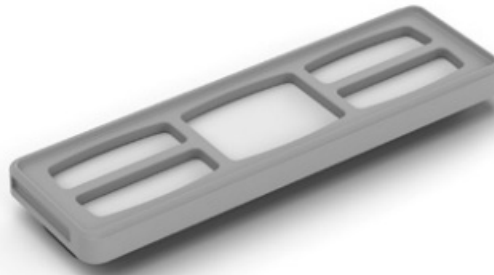
Product Specifications:

- Product Name: MS10 Front Filters for MSE
- Compatibility: MSE-B
- Includes: 1 set of front filters (5 filters per set), 1 instruction manual
- Manufacturer Part Number: 0034152

Packing List

For ref. MS10:

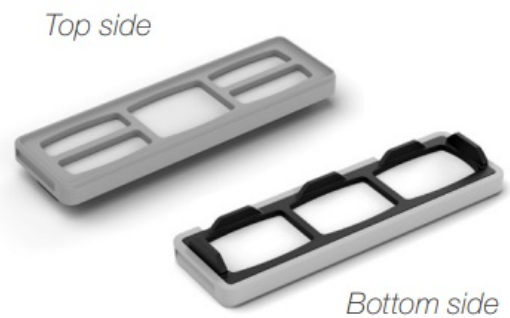
•



Front Filters for MSE 1 set
(Each set includes 5 filters)

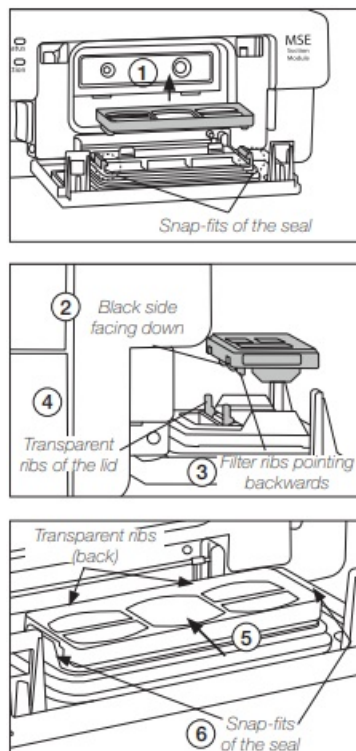
- Manual 1 unit
Ref. 0034152

MS10 filters are used with MSE-B.



Replacement

- Open the front lid of MSE by sliding down the side tabs. Remove the worn filter by pulling it upwards (1) out of the snap-fits of the seal.
- Position the new filter so that the black side is facing down (2) and the ribs at its long side are pointing backwards (3), towards the transparent ribs of the lid (4).
- With the filter positioned flat between the snap-fits, push it back (5) until it stops against the transparent ribs. Make sure that the snap-fits of the seal are slot into the lateral recesses (6) of the filter frame. Close the lid by pressing against both upper corners until it clicks.



Frequently Asked Questions

- **Q: How often should I replace the front filters on my MSE?**

A: It is recommended to replace the front filters when they appear worn or clogged for optimal performance. Depending on usage, check the filters regularly and replace them as needed.

- **Q: Can I use MS10 filters with other models besides MSE-B?**

A: No, MS10 filters are specifically designed for use with MSE-B and may not be compatible with other models. Ensure compatibility before use.

- **Q: What should I do if the filter does not fit properly?**

A: If the filter does not fit correctly, double-check the positioning following the instructions provided. Ensure the black side is facing down and the ribs are aligned properly before closing the lid.

Documents / Resources

| | |
|--|---|
| | <p>JBC MS10 Front Filters [pdf] Instruction Manual</p> <p>MS10 Front Filters, MS10, Front Filters, Filters</p> |
|--|---|

References

- [User Manual](#)