



JBC CL8010 Wiper for Manual Tip Cleaner Instruction Manual

[Home](#) » [JBC](#) » JBC CL8010 Wiper for Manual Tip Cleaner Instruction Manual 

JBC

www.jbctools.com
INSTRUCTION MANUAL



CL8010C, CL0240
Wiper for Manual Tip Cleaner

Contents

- [1 CL8010 Wiper for Manual Tip Cleaner](#)
- [2 Packing List](#)
- [3 Features](#)
- [4 Wiper Replacement](#)
- [5 Specifications](#)
- [6 Documents / Resources](#)

CL8010 Wiper for Manual Tip Cleaner

This manual corresponds to the following references:

- CL8010** – red
- CL0240** – black

Packing List

The following items are included:



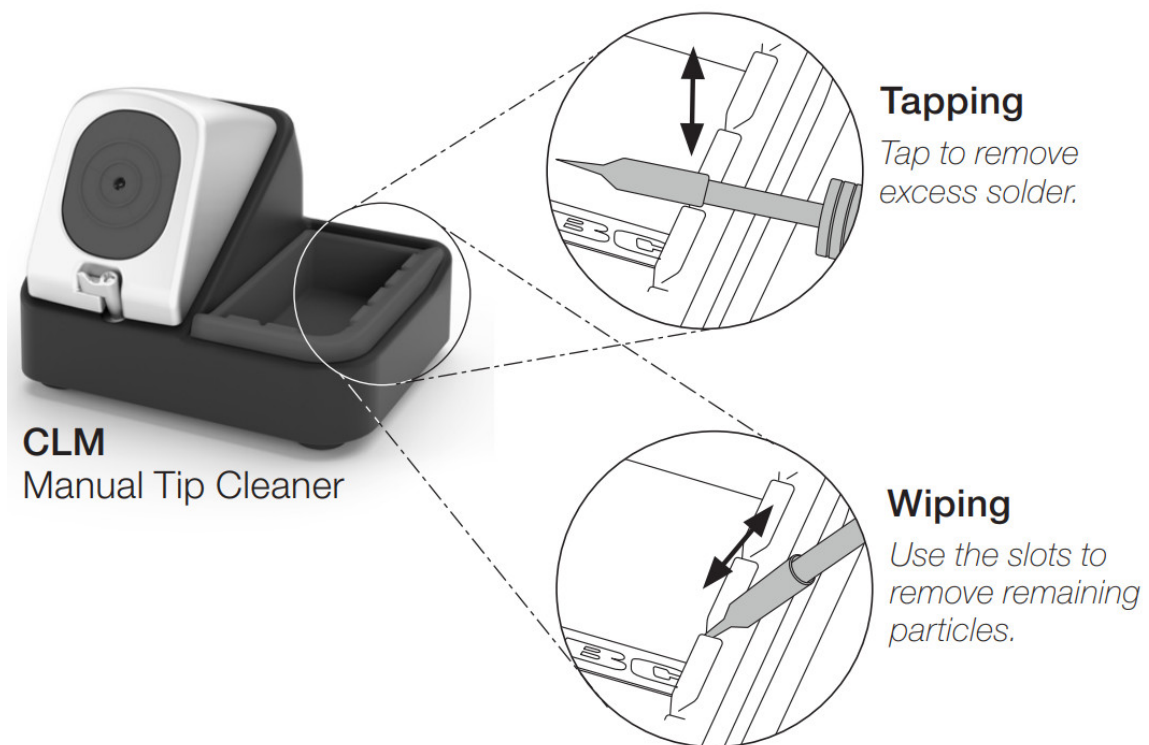
Wiper for Manual Tip Cleaner	1 unit
------------------------------------	--------



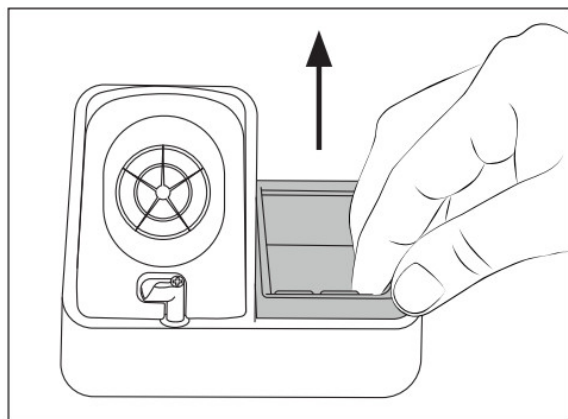
www.jbctools.com

Manual 1 unit
Ref. 0029715

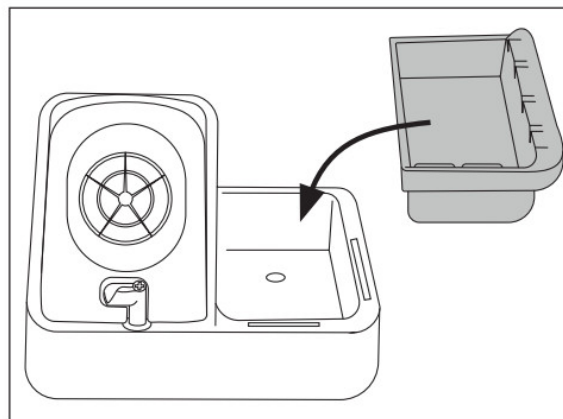
Features



Wiper Replacement



First pull the wiper out.



Then inset the new one.

Specifications

CL8010, CL0240

Wiper for Manual Tip Cleaner

Ref. CL8010 – red

Ref. CL0240 – black

– Total Net Weight: 26 g / 0.057 lb

– Package Dimensions/Weight: 60 x 55 x 40 mm / 34 g

(W x L x H) 2.36 x 2.17 x 1.57 in / 0.075 lb

ESD safe

Warranty

JBC's 2 year warranty covers this equipment against all manufacturing defects, including the replacement of defective parts and labor.

Warranty does not cover product wear or misuse.

In order for the warranty to be valid, equipment must be returned, postage paid, to the dealer where it was purchased.



This product should not be thrown in the garbage.


In accordance with the European directive 2012/19/EU, electronic equipment at the end of its life must be collected and returned to an authorized recycling facility. a manuals – color grips



www.jbctools.com

0029715-180722

Documents / Resources

 <p>JBC www.jbctools.com INSTRUCTION MANUAL</p> <p>CL8010, CL0240 Wiper for Manual Tip Cleaner</p>	<p>JBC CL8010 Wiper for Manual Tip Cleaner [pdf] Instruction Manual</p> <p>CL8010, CL0240, CL8010 Wiper for Manual Tip Cleaner, Wiper for Manual Tip Cleaner, Manual Tip Cleaner, Tip Cleaner, Cleaner</p>
---	---