



JBC CL8010 Wiper for CLM Manual Tip Cleaner Instruction Manual

[Home](#) » [JBC](#) » JBC CL8010 Wiper for CLM Manual Tip Cleaner Instruction Manual 

Contents

- [1 JBC CL8010 Wiper for CLM Manual Tip Cleaner](#)
- [2 Packing List](#)
- [3 Wiper for CLM Manual Tip Cleaner Features](#)
- [4 Wiper Replacement](#)
- [5 Specifications](#)
- [6 Warranty](#)
- [7 Documents / Resources](#)
- [8 Related Posts](#)

JBC

JBC CL8010 Wiper for CLM Manual Tip Cleaner



Packing List

The following items are included:

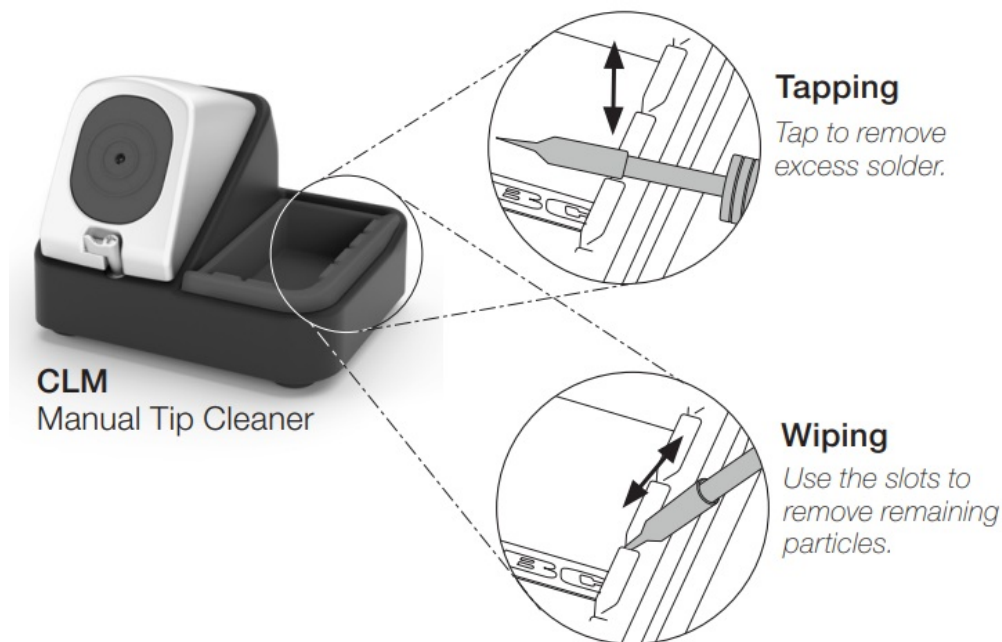


Wiper for CLM Manual Tip Cleaner

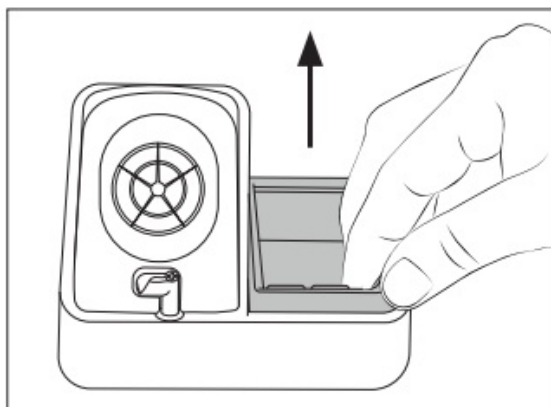


Features

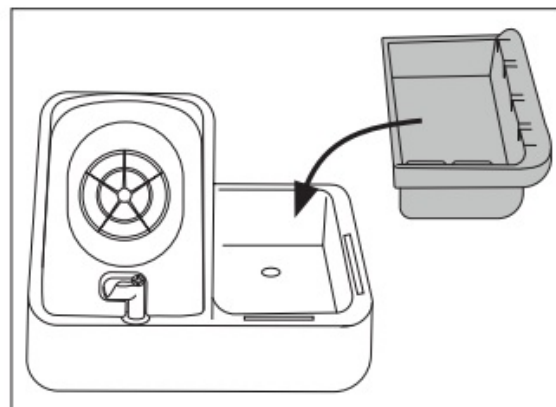
CL8010 and CL0240 are used in JBC's CLM manual tip cleaner



Wiper Replacement



First pull the wiper out.



Then inset the new one.

Specifications



CL8010, CL0240
Wiper for CLM Manual Tip Cleaner
Ref. CL8010 – red
Ref. CL0240 – black

- **Total Net Weight:** 26 g / 0.057 lb
- **Package Dimensions/Weight:** 60 x 55 x 40 mm / 34 g (W x L x H) 2.36 x 2.17 x 1.57 in / 0.075 lb

Warranty

JBC's 2 year warranty covers this equipment against all manufacturing defects, including the replacement of defective parts and labour. Warranty does not cover product wear or misuse. In order for the warranty to be valid, equipment must be returned, postage paid, to the dealer where it was purchased. This product should not be thrown in the garbage. In accordance with the European directive 2012/19/EU, electronic equipment at the end of its life must be collected and returned to an authorized recycling facility

Documents / Resources

<div> www.jbcnusa.com INSTRUCTION MANUAL</div> <div></div> <div>CL8010, CL0240 Wiper for CLM Manual Tip Cleaner</div>	<p>JBC CL8010 Wiper for CLM Manual Tip Cleaner [pdf] Instruction Manual</p> <p>CL8010 Wiper for CLM Manual Tip Cleaner, Wiper for CLM Manual Tip Cleaner, Manual Tip Cleaner, Tip Cleaner, CL0240</p>
--	--