

JAVAD LMR400 UHF Radio Module User Manual

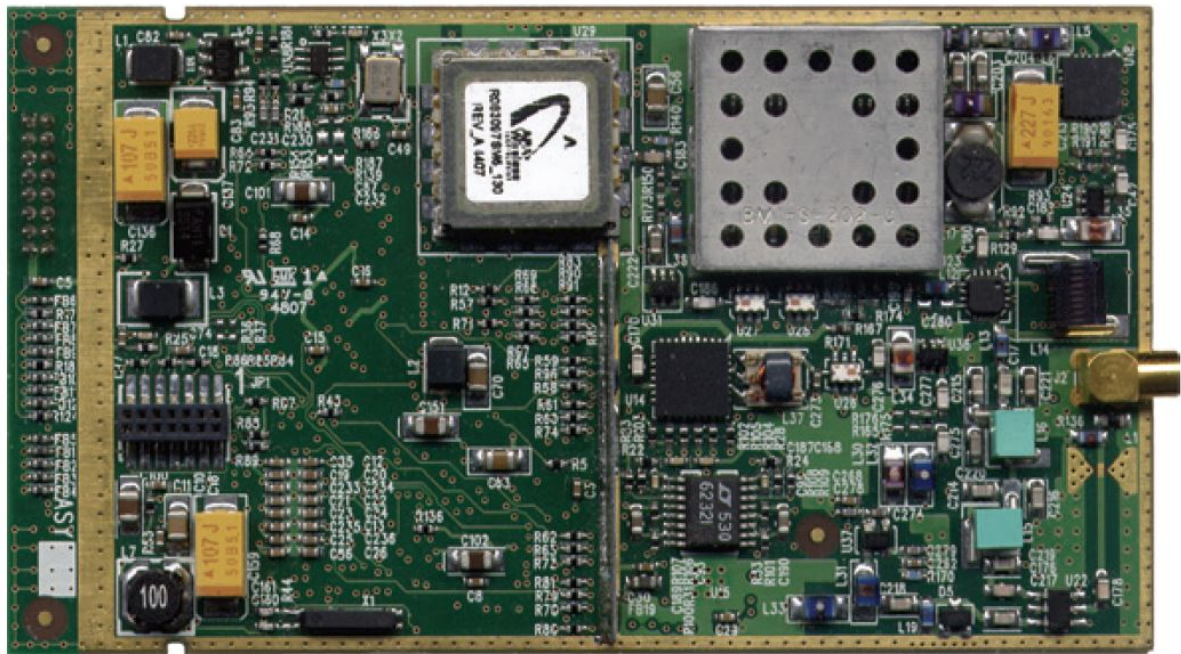
[Home](#) » [JAVAD](#) » JAVAD LMR400 UHF Radio Module User Manual

Contents [[hide](#)]

- [1 JAVAD LMR400 UHF Radio Module](#)
- [2 Support Inquires](#)
- [3 16-Lead Header Connector Pinout](#)
- [4 Documents / Resources](#)
 - [4.1 References](#)
- [5 Related Posts](#)



JAVAD LMR400 UHF Radio Module



For operation manuals and other technical documents, please visit our website and download the latest firmware. Here are the link to the LMR400 firmware, documentation, and utilities:

<http://javad.com/jgnss/products/radios/oem-radios.html>

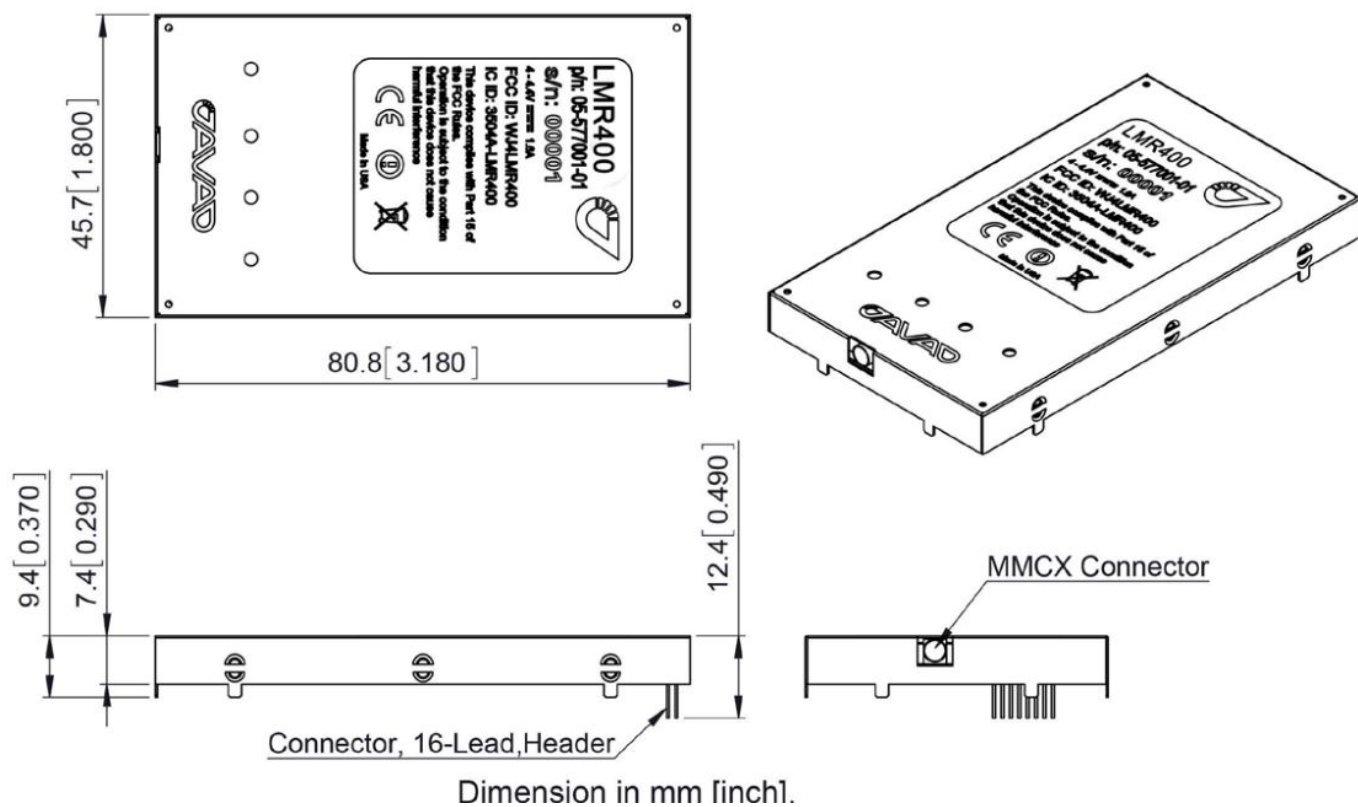
Support Inquires

In order to address customer support inquiries in a timely and effective manner; JAVAD GNSS has created a powerful online question utility. To take advantage of this utility, please log into your JAVAD GNSS account and select QUESTIONS from the drop down menu.



The questions utility may also be reached by clicking: **Menu>Questions**

When the JAVAD GNSS support team posts a response to your inquiry, an email containing this response is sent to the email address you have registered in your profile.

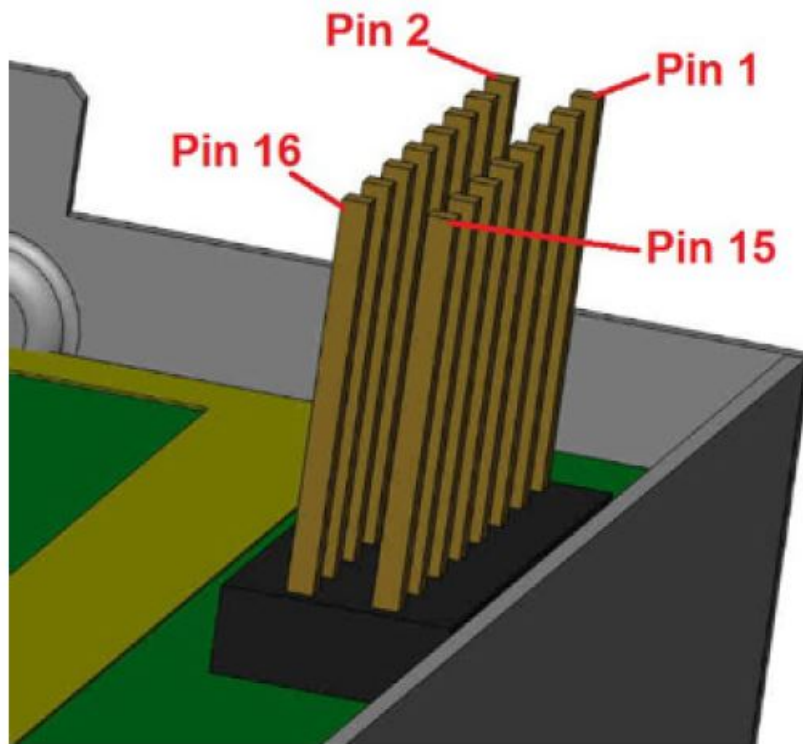


16-Lead Header Connector Pinout

Pin #	Signal Designator	Signal name	Description	I/O	Comments
1	GND	GND	Ground	—	Signal and Chassis Ground
2	DSP UART 1	TXD	Transmitted Data	TTL Input	Serial Data Input
3	DSP UART 2	RXD	Received Data	TTL Output	Output for received serial data

4	DPORT5	DTR or D P/MP	Data Terminal Ready	TTL Input	Control line can be used as a backup method for entering Command mode: (0V) – Maintenance Mode; (3.3V) – Data Mode. An internal 100K pull-up enables Data Mode if this signal is left unconnected. Maintenance Mode is also accessible by transmitting an escape sequence.
5	DPORT1	CTS	Clear to Send	TTL Output	Used to control transmit flow from the user to the radio: (0V) – Transmit buffer not full, continue transmitting (3.3V) – Transmit buffer full, stop transmitting
6	TTL1	SLEEP	Sleeps/wakes radio Receive only	TTL Input	In sleep mode, all radio functions are disabled consuming less than 50µA. An internal 10K pull-down wakes up the radio if this signal is left unconnected. At wake up, any user programmed configuration settings are refreshed from flash memory, clearing any temporary settings that may have been set:(3.3V) – Sleep Radio; (0V) – Wake Radio. As an option could be used as TTL Input Line 1.
7	DPORT3	MDM_GRN	Data Carrier Detect	TTL Output	Used by remotes to indicate that the remote has successfully acquired the signal from base station: (0V) 1 – Carrier detected (synchronized)(3.3V) 0 – No carrier detected (not synchronized)
8	DPORT4	RTS	Request to Send	TTL Input	Gates the flow of receive data from the radio to the user on or off. An internal 10K pull-down enables data receive if this signal is left unconnected. In normal operation, this signal should be asserted:(0V) – Receive data (RxD) enabled (3.3V) – Receive data (RxD) disabled

9	DPORT2	DSR	Data Set Ready	TTL Output	Used to control transmit flow from the user to the radio:(0V) 1 – Receive buffer has data to transfer; (3.3V) 0 – Receive buffer is empty
10	RES CO NT	RESCON T	Reset the radio	TTL Input	Reset the radio by shortening this pin to the ground.
11	TTLO1	TTLOUT1	TTL Output Line 1	TTL Output	Reserve line
12	TTLO2	TTLOUT2	TTL Output Line 2	TTL Output	Reserve line
13	GND	GND	Ground	–	Signal and Chassis Ground
14	TTLI2	TTLIN	TTL Input line	TTL Input	An internal 100K pull-up resistor is applied.
15	VCC36	PWR	Power Supply	External	Regulated positive 4.2V DC from ext. Power Supply.
16	VCC36	PWR	Power Supply	External	Regulated positive 4.2V DC from ext. Power Supply.



900 Rock Avenue, San Jose, CA 95131 USA Phone: +1(408) 770-1770

www.javad.com

Copyright © JAVAD GNSS, Inc., 2021

Documents / Resources

 <p>LMR400</p> <p>The operation manual of the LMR400 module is available at www.javad.com. Please refer to the manual for more details.</p> <p>Support Inquiry</p> <p>For any technical support or inquiry, please contact our support team at support@javad.com.</p>	<p>JAVAD LMR400 UHF Radio Module [pdf] User Manual</p> <p>LMR400, UHF Radio Module</p>
--	--

References

- [OEM Radios | JAVAD GNSS](#)
- [JAVAD GNSS](#)