

Java
P137
Rechargeable
Heated
Insoles



Java P137 Rechargeable Heated Insoles Instructions

[Home](#) » [java](#) » Java P137 Rechargeable Heated Insoles Instructions 

Contents

- [1 Java P137 Rechargeable Heated Insoles](#)
- [2 Product Usage Instructions](#)
- [3 Frequently Asked Questions](#)
- [4 SPECIFICATION](#)
- [5 Instructions](#)
- [6 WARNINGS AND SAFETY INSTRUCTIONS](#)
- [7 CARE AND CLEANING INSTRUCTIONS](#)
- [8 Documents / Resources](#)
 - [8.1 References](#)

Java

Java P137 Rechargeable Heated Insoles



Product Specifications

- **Item No:** P137 / 67553
- **Power Details:** Rated Voltage: 5V, Rated Current: 2A
- **Accessories:** USB plug
- **Size:** ALL SIZE
- **Temperature Range:** 40-50 (depending on environment)

Product Usage Instructions

1. **Preparation:** Please read the instruction manual thoroughly before use.
2. **Powering On:** Plug in the USB plug to a power source with a rated voltage of 5V and a current of 2A.
3. **Heating:** The insole will start heating up once powered. It will reach a comfortable constant temperature within 3 minutes.
4. **Stopping Heating:** Unplug the USB plug to stop the heating process.
5. **Energy Saving:** If not in use for a long time, unplug the power adapter to save energy and extend the product's service life.
6. **Charger Usage:** This product can also be used with a charger. Ensure the charger's output power is greater than 5V/2A for optimal performance.

Warnings and Safety Instructions

- **Plug Wiring (UK & Ireland):** Follow specific plug wiring instructions for safety.
- **Care and Cleaning:** Refer to the care and cleaning instructions provided for maintenance.
- **Disposal:** Dispose of the product properly following the specified guidelines.

Frequently Asked Questions

Q: Can the heated insoles be used with a power bank?

A: Yes, you can use a power bank as long as it provides the required output of 5V/2A or higher.

RECHARGABLE HEATED INSOLES

Item No: P137 / 67553

Instructions for Use v001: 04/09/24

Please read and retain these instructions for future reference

SPECIFICATION

- Power Details: Rated
- Voltage : 5V
- Rated current: 2A
- Accessories: USB plug

Please read this instruction manual thoroughly before starting and ensure you are familiar with the operation of your new RECHARGABLE HEATED INSOLES.

Size	ALL SIZE	Temperature	40-50°C (depending On environment)
------	----------	-------------	------------------------------------

Instructions

The design of the power cord is one divides into two for this product, with two legs separated and easy to use. The specific steps are as follows:

- Put insoles into each shoe.
- Put the DC plugs on the insoles separately into the power cord.
- Connect the USB plug on the power cord to the power supply.

The insole is heated after being powered, and it will reach comfortable constant temperature within 3 minutes. The heating will be stopped when the power is turned off.

When you need to move around or stop heating, unplug the plug that connects the hot insoles.

If you leave for a long time, please be sure to unplug the power adapter to save energy and extend the service life of the product.

This product can also be used with the charger. The output power of the charger should be greater than 5V/2A, otherwise the temperature will be a little lower.

WARNINGS AND SAFETY INSTRUCTIONS

WHEN USING ELECTRICAL APPLIANCES, BASIC SAFETY PRECAUTIONS SHOULD ALWAYS BE FOLLOWED:

- READ ALL INSTRUCTIONS BEFORE USE.
- FOR DOMESTIC INDOOR USE ONLY.

- DO NOT USE OUTDOORS OR FOR COMMERCIAL USE.
- ONLY USE WITH THE ADAPTOR/CHARGER SUPPLIED.
- DO NOT USE ANY OTHER MAINS ADAPTOR/CHARGER AS THIS MAY CAUSE DAMAGE AND INVALIDATES ANY WARRANTY YOU MAY HAVE.
- BEFORE USE, CHECK THOROUGHLY FOR ANY DEFECTS AND DO NOT USE IF DEFECTS ARE FOUND. TAKE CARE NOT TO DROP THE APPLIANCE AS HEAVY IMPACTS MAY CAUSE INTERNAL DAMAGE.
- BEFORE CONNECTING THE APPLIANCE, CHECK IF THE VOLTAGE INDICATED ON THE BOTTOM OF THE APPLIANCE IS IN ACCORDANCE WITH THE MAINS VOLTAGE IN YOUR HOME.
- CHECK THE APPLIANCE AND POWER CABLE CAREFULLY FOR DAMAGE BEFORE EACH USE.
- THIS APPLIANCE CAN BE USED BY CHILDREN AGED FROM 8 YEARS AND ABOVE, AND PERSONS WITH REDUCED PHYSICAL, SENSORY OR MENTAL CAPABILITIES OR LACK OF EXPERIENCE AND KNOWLEDGE IF THEY HAVE BEEN GIVEN SUPERVISION OR INSTRUCTION CONCERNING USE OF THE APPLIANCE IN A SAFE WAY AND UNDERSTAND THE HAZARDS INVOLVED. CHILDREN SHALL NOT PLAY WITH THE APPLIANCE. CLEANING AND USER MAINTENANCE SHALL NOT BE MADE BY CHILDREN WITHOUT SUPERVISION.
- CHILDREN OF LESS THAN 3 YEARS SHOULD BE KEPT AWAY UNLESS CONTINUOUSLY SUPERVISED.
- THE USE OF ANY ACCESSORY OR ATTACHMENTS NOT RECOMMENDED BY COOPERS OF STORTFORD MAY CAUSE INJURIES AND INVALIDATE ANY WARRANTY YOU MAY HAVE.
- DO NOT USE THIS ITEM FOR ANY OTHER USE THAN THE INTENDED USE IT IS DESIGNED FOR.
- TO PROTECT AGAINST ELECTRIC SHOCK, DO NOT IMMERSE POWER CABLE, MAINS ADAPTOR/CHARGER OR APPLIANCE, IN WATER OR ANY OTHER LIQUID.
- UNPLUG FROM OUTLET WHEN NOT IN USE AND BEFORE CLEANING.
- DO NOT OPERATE ANY APPLIANCE WITH A DAMAGED POWER CABLE OR MAINS ADAPTOR/CHARGER OR AFTER THE APPLIANCE MALFUNCTIONS OR HAS BEEN DAMAGED IN ANY MANNER. WE RECOMMEND THAT THE POWER CABLE IS NOT KINKED OR STORED IN A TWISTED MANNER, AND THAT YOU REGULARLY CHECK ITS CONDITION.
- DO NOT LEAVE UNATTENDED.
- ANY REPAIRS MUST BE CONDUCTED BY A QUALIFIED ELECTRICIAN OR ELECTRICAL SERVICE AGENT.

PLUG WIRING (UK & IRELAND):

This appliance is supplied with a mains adaptor/charger with BS1363 plug pins.

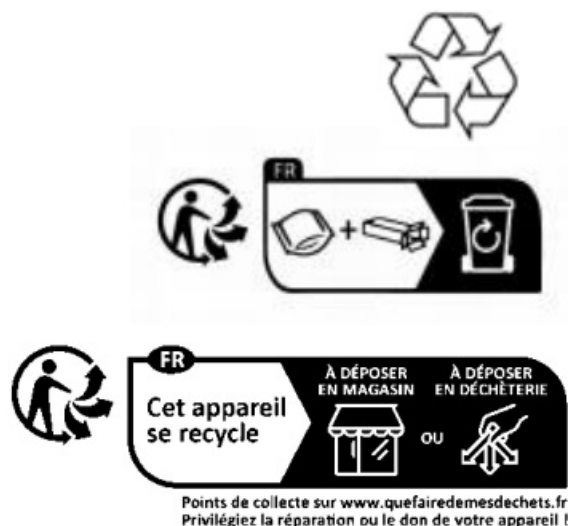
DO NOT use If the socket outlets in your home or office are not suitable for this product's mains adaptor/charger plug pins. Attempts to insert the mains adaptor/charger into the wrong socket is likely to cause electric hazard or damage. DO NOT use with any other mains transformer/charger than the one that is supplied with this product.


CARE AND CLEANING INSTRUCTIONS

- Always switch off and unplug before cleaning.
- Do NOT immerse in water. Risk of electric shock.
- Do NOT use abrasive cleaners or sharp utensils to clean this appliance.
- Wipe surfaces with a soft dry cloth.
- Allow to dry thoroughly before further use.
- Store the appliance in a cool, dry place.

DISPOSAL

- Coopers of Stortford use recyclable or recycled packaging where possible.
- Please dispose of all packaging, paper, cartons in accordance with your local authority recycling regulations.
- At the end of the product's lifespan please check with your local council authorised household waste recycling centre for disposal.
- Plastics, polybags – this is made from the following recyclable plastic.



Code & Symbol	
Type of Plastic	Please Specify (includes ABS, Nylon)

- At the end of the product's lifespan please check with your local council authorised household waste recycling centre for disposal.

Distributed by

UK:

The Enterprise Department Ltd.
11 Bridge Street, Bishops Stortford
Herts, UK, CM23 2JU
Tel: 0330 331 0300

NI/EU:

D.S.B. LD, 160 Bd. de Fourmies, 59100 Roubaix, France Tel: (+44) 1279 701269

DE/FR/CZ/SK:


hergestellt für 3Pagen
Sankt-Joeris-Strasse 16-28

53477 Alsdorf

Tel: +49(0)2404/980-204

kontakt@3pagen.de

Documents / Resources

	<p>Java P137 Rechargeable Heated Insoles [pdf] Instructions</p> <p>P137, 67553, P137 Rechargeable Heated Insoles, P137, Rechargeable Heated Insoles, Heated Insoles</p>
---	---

References

- [User Manual](#)

Manuals+. [Privacy Policy](#)

This website is an independent publication and is neither affiliated with nor endorsed by any of the trademark owners. The "Bluetooth®" word mark and logos are registered trademarks owned by Bluetooth SIG, Inc. The "Wi-Fi®" word mark and logos are registered trademarks owned by the Wi-Fi Alliance. Any use of these marks on this website does not imply any affiliation with or endorsement.