



JasonL Lean Echo Screen Instruction Manual

[Home](#) » [jason.l](#) » JasonL Lean Echo Screen Instruction Manual 



ASSEMBLY INSTRUCTIONS

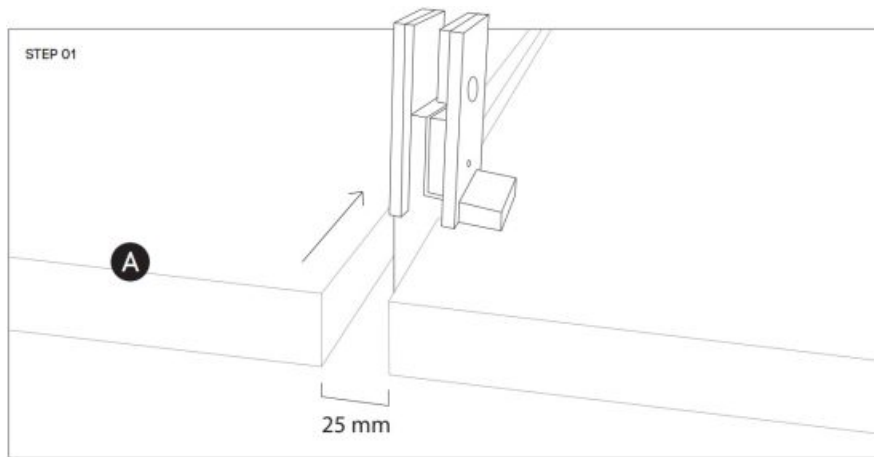
Lean perspex or
Lean Echo screens
Sizes: 800 / 1500 mm wide



Contents

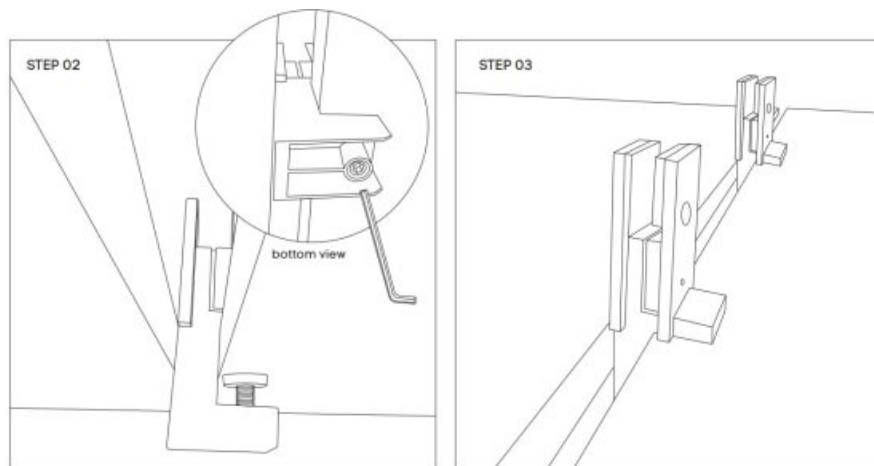
- [1 Lean Echo Screen](#)
- [2 Documents / Resources](#)
- [2.1 References](#)

Lean Echo Screen



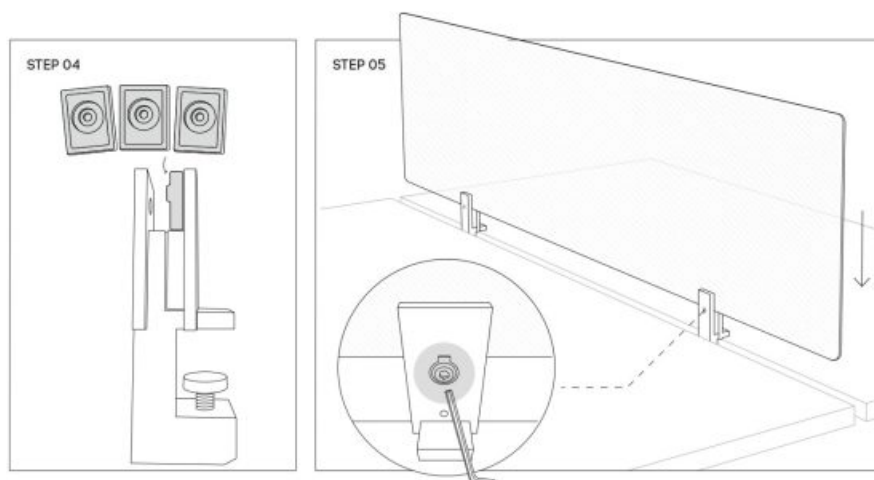
Please leave 25mm gap between table tops (A) so we can install pincer clamp brackets between the two table tops.

Pincer brackets can be installed around 250mm-300mm from the end of the screen (or can be any desired distance).



Step 2: Once desired location is set, please tighten the first pincer clamp bracket bottom screw using an allen key.

Step 3: Repeat step 2 and assemble the second pincer clamp bracket.



Step 4: Please put the plastic spacer in between the clamp brackets.

Hint: Lean Perspex use 2x thicker plastic spacers. Lean Echo screen use 1x thin plastic spacer only.

Step 5: Please slide down Lean Perspex or Lean Echo screens down until it fully rest over the brackets, standing between the pincer clamp brackets. Please use both plastic spacer to clamp the screen and tighten it using an

allen key.



www.jasonl.com.au

Need help!

Call us on 1300 527 665

Documents / Resources



[JasonL Lean Echo Screen](#) [pdf] Instruction Manual
Lean Echo Screen, Lean, Echo Screen, Screen

References

- [User Manual](#)

[Manuals+](#), [Privacy Policy](#)

This website is an independent publication and is neither affiliated with nor endorsed by any of the trademark owners. The "Bluetooth®" word mark and logos are registered trademarks owned by Bluetooth SIG, Inc. The "Wi-Fi®" word mark and logos are registered trademarks owned by the Wi-Fi Alliance. Any use of these marks on this website does not imply any affiliation with or endorsement.