



# JASCO ZW5313 Z-Wave 700s 2-Button Simple Controller User Manual

[Home](#) » [JASCO](#) » JASCO ZW5313 Z-Wave 700s 2-Button Simple Controller User Manual 



## ZW5313 Z-Wave 700s 2-Button Simple Controller User Manual



## Contents

- 1 ZW5313 Z-Wave 700s 2-Button Simple Controller
- 2 WARRANTY
- 3 SPECIFICATIONS
- 4 Installing the remote beside the existing switch
- 5 Removing your remote from a Z-Wave network
- 6 Wakeup interval information
- 7 Documents / Resources
  - 7.1 References
- 8 Related Posts

## ZW5313 Z-Wave 700s 2-Button Simple Controller

### Portable Wireless Hub/Panel Remote



<https://byjasco.com/HEP-ET/20000-99999/37792/manual>

Read instructions or watch the easy-to-follow video.  
Scan QR code or visit [goo.gl/xBMTZa](https://goo.gl/xBMTZa).

Never lose track of your remote with a magnetic remote stand.  
Visit [ezzwave.com](https://ezzwave.com).

**For use  
as:**



**Tabletop  
Stand**

**OR**



**Wall-Mounted  
Stand**

Purchase additional items at [ezzwave.com](https://ezzwave.com) or visit your local retailer.



**In-Wall  
Smart Dimmers**



**Plug-in  
Smart Dimmers**



**In-Wall  
Add-on Switches**



**In-Wall Motion  
Switch or Dimmer**



**Plug-in  
Smart Switches**



**In-Wall  
Smart Switches**



**Enbrighten  
Smart LED Bulb**



**In-Wall  
Smart Fan Control**



**Hinge Pin  
Smart Door Sensor**



**Direct Wire,  
40A Outdoor  
Smart Switch**



**Portable  
Smart Multi  
Sensor**



**In-Wall  
Tamper-Resistant  
Smart Outlet**



**Plug-in  
Outdoor Smart  
Switch**



**DO NOT RETURN THIS PRODUCT TO THE STORE**

If you have any problems or questions, contact our U.S.-based Consumer Care at 1-800-654-8483, option 1, Monday–Friday, 7 AM–8 PM Central Time.

For the most up-to-date product support, accessories, electronic (PDF) format manuals, and more, visit [www.byjasco.com/support](http://www.byjasco.com/support).

- No user-serviceable parts in this unit.

#### **WARNING**

#### **NOT FOR USE WITH MEDICAL OR LIFE-SUPPORT EQUIPMENT**

Z-WAVE-ENABLED DEVICES SHOULD NEVER BE USED TO SUPPLY POWER TO OR CONTROL THE ON/OFF STATUS OF MEDICAL OR LIFE SUPPORT EQUIPMENT.

Requires two CR2032 coin cells.  
Observe polarity markings (+), (-).

## CAUTION

- BATTERIES MAY LEAK HARMFUL LIQUIDS OR IGNITABLE MATERIALS OR EXPLODE CAUSING INJURY AND PRODUCT DAMAGE.
- DO NOT MIX OLD AND NEW OR OTHER BATTERY TYPES.
- REPLACE ALL BATTERIES AT THE SAME TIME.
- REPLACE EXHAUSTED BATTERIES IMMEDIATELY.
- REMOVE BATTERIES IF THE PRODUCT IS TO BE UNUSED FOR EXTENDED PERIODS.

## WARRANTY

Jasco Products Company warrants this product to be free from manufacturing defects five years from the original date of consumer purchase. This warranty is limited to the repair or replacement of this product only and does not extend to consequential or incidental damage to other products that may be used with this product. This warranty is in lieu of all other warranties, expressed or implied. Some states do not allow limitations on how long an implied warranty lasts or permit the exclusion or limitation of incidental or consequential damage, so the above limitations may not apply to you. This warranty gives you specific rights, and you may also have other rights which vary from state to state. Please contact our U.S.-based Consumer Care at 1-800-654-8483 (option 1) between 7 AM – 8 PM, M-F, Central Time, or [www.byjasco.com](http://www.byjasco.com) if the unit should prove defective within the warranty period.

Jasco Products Company LLC, Building B  
10 E. Memorial Rd.  
Oklahoma City, OK 73114.

## SPECIFICATIONS

### ZW5313

Battery operated: 2x CR2032 lithium 3V batteries

Signal (frequency): 908.4/916MHz

Range: Up to 150ft. line of sight between the wireless controller and the closest Z-Wave receiver module

Operating temperature range: 32-104° F (0-40° C)

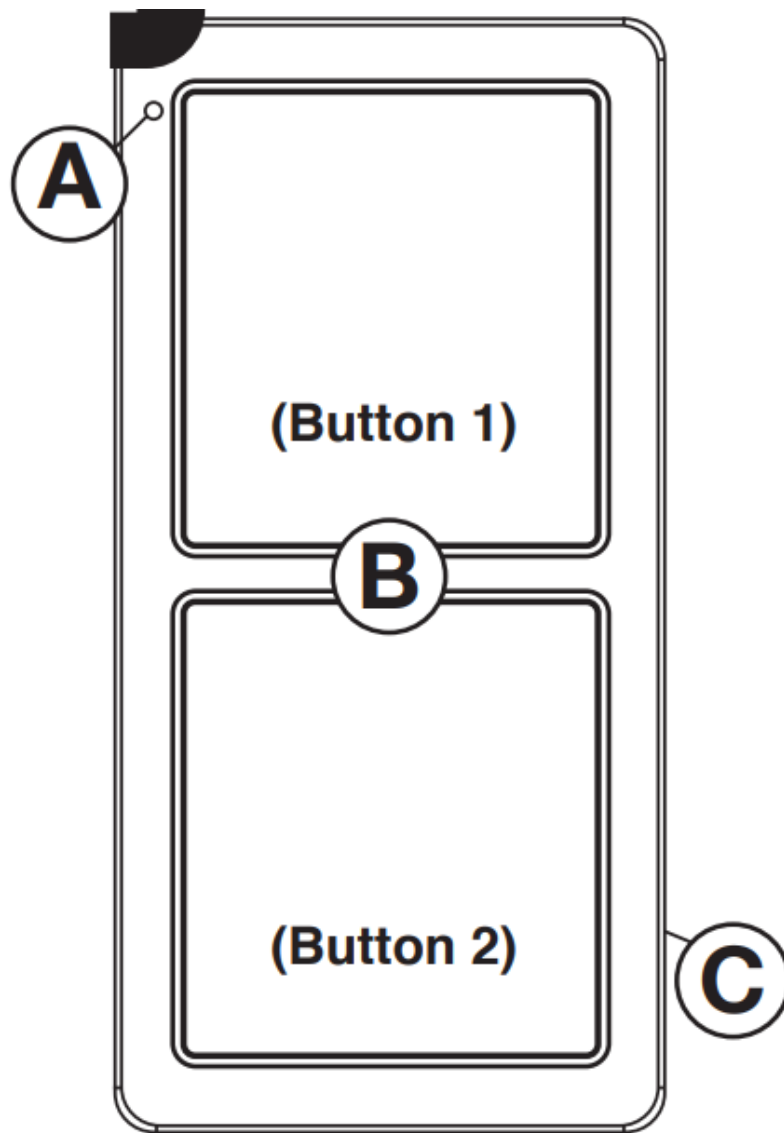
For indoor use only

Specifications are subject to change without notice due to continuing product improvement

### Getting to know your new Z-Wave device

- No wiring is necessary.
- Two function buttons. Each button supports up to three actions (up to six unique actions).
- Fits multi-gang wallplates (not included) for installation beside existing switches.

### Actions



Actions allow the user to select predetermined actions and assign them to start or stop with the press of a button. The controller sends the button press information to the hub, which executes the action. An action can be many combinations of scenes, groups or events, and is greatly dependent on the hub's capabilities.

**A. LED indicator**

**B. Buttons**

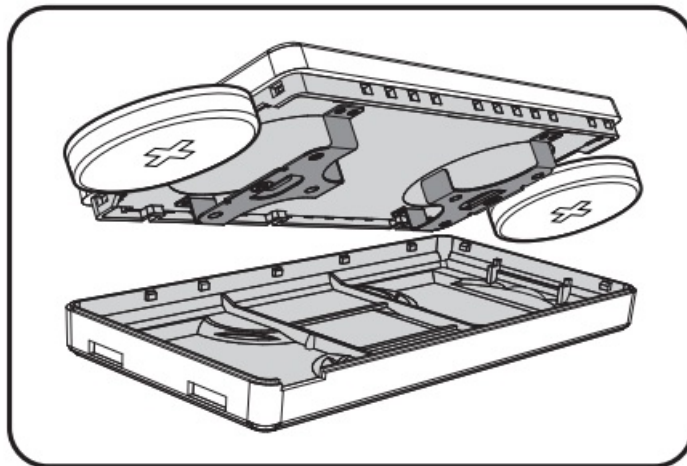
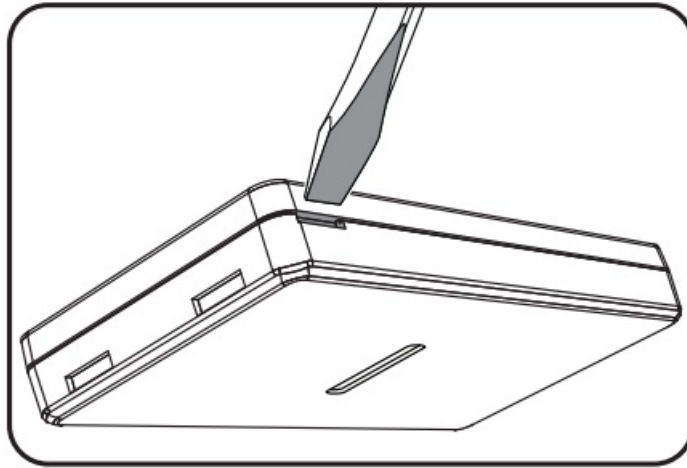
**Single press** — sends action 1 for that button to the hub/controller.

**Double press** — sends action 2 for that button to the hub/controller.

**Triple press** — sends action 3 for that button to the hub/controller.

**C. Battery tray notch** — located on the side

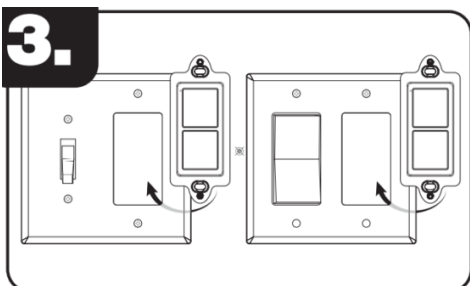
**Installing or replacing the battery**



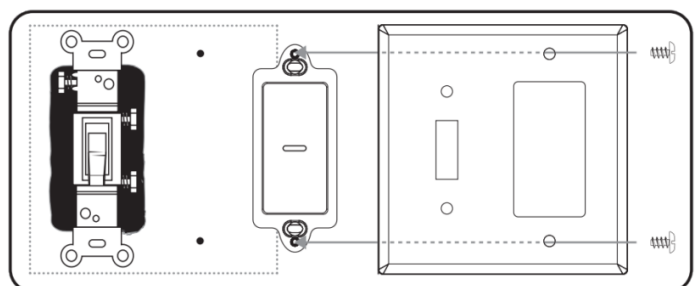
1. Turn the remote to the right side to reveal a slot in the lower right corner of the controller.
2. Insert a 1/4in. standard flat-blade screwdriver into the slot and twist to release housing clamps. Once the edge is raised, gently move around the frame to release both halves.
3. Remove old batteries by sliding them out of the top and bottom of the holders. Place new batteries with (+) side facing up.
4. Snap the controller halves together.

### Installing the remote beside the existing switch

1. Remove wallplate from existing switch.
2. Screw the remote bracket assembly onto the new wallplate (not included).  
**NOTE:** Use provided 1/4in. low-profile mounting bracket screws.
3. Place the wall plate assembly onto the existing switch and secure it with existing wallplate screws.

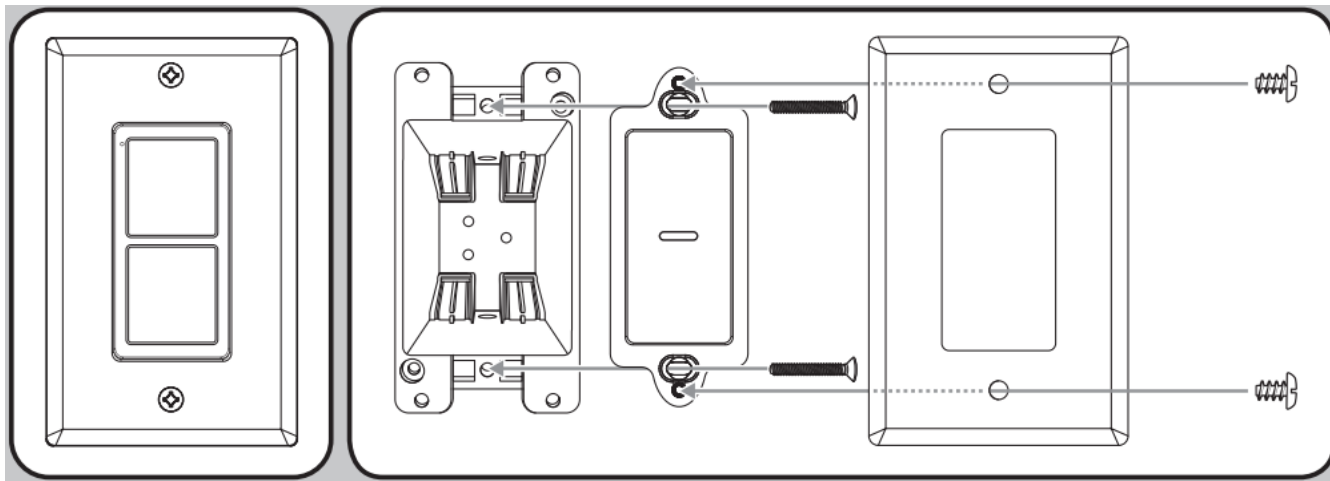


OR



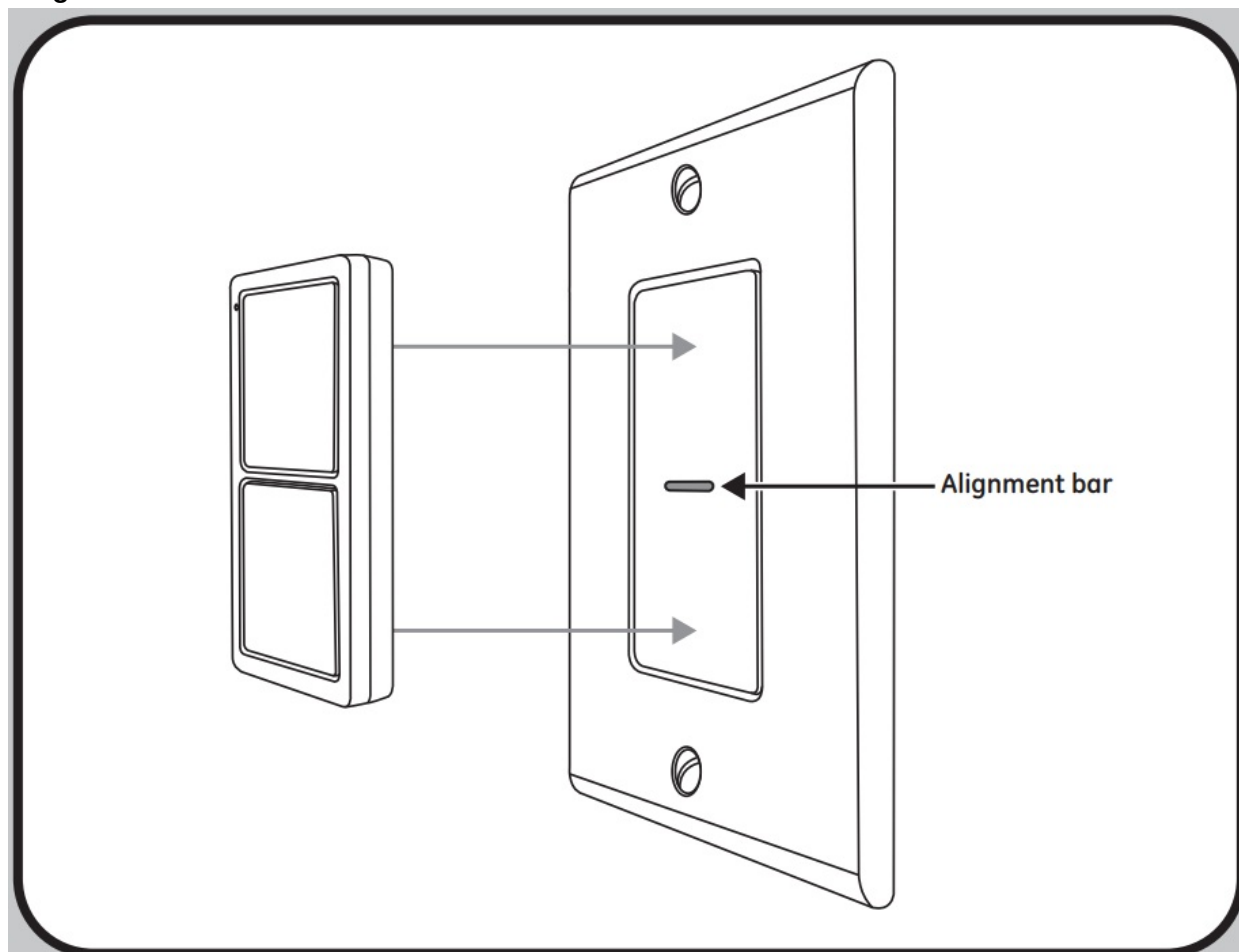
### Installing remote with single wallplate

Bracket design will work with standard electrical boxes and low-voltage mud rings.



1. Using the supplied 1in. screws secure the mounting bracket to the box.
2. Place the wallplate (not included) onto the mounting bracket and secure with provided 1/4in. low-profile mounting bracket screws.

#### Mounting remote on wall mount



1. The wall-mount bracket is magnetic and will hold the remote in place. Gently place the remote on top of the remote bracket using the alignment bar to center the remote.

#### Z-WAVE INTEROPERABILITY

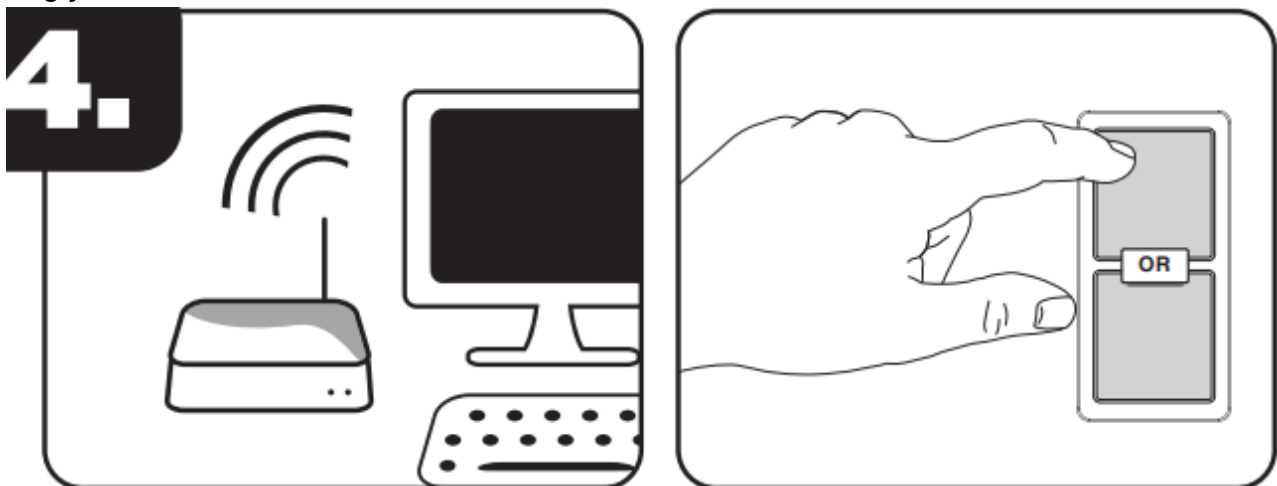


This product can be included and operated in any Z-Wave network with other Z-Wave certified devices from other manufacturers and/or other applications. All non-battery operated nodes within the network will act as repeaters regardless of vendor to increase the reliability of the network.

#### **This device supports Association Command Class (3 Groups)**

- Association Group 1 supports Lifeline, Battery Reports, Device Reset Locally Notification, Central Scene, Indicator Report
- Association Group 2 supports Basic Set and is controlled by pressing the Up or Down button once.
- Association Group 3 supports Basic Set and is controlled by double-pressing the UP or Down button
- Each Association Group supports 5 total nodes

#### **Adding your remote to a Z-Wave network**



1. Follow the instructions for your Z-Wave certified hub to add a device to the Z-Wave network.
2. Once the hub is ready to add your device, press and hold either button for three seconds.
3. The LED will flash two times when the remote sends add notification (NIF).
4. The LED will keep lighting up for one minute if inclusion is successful.

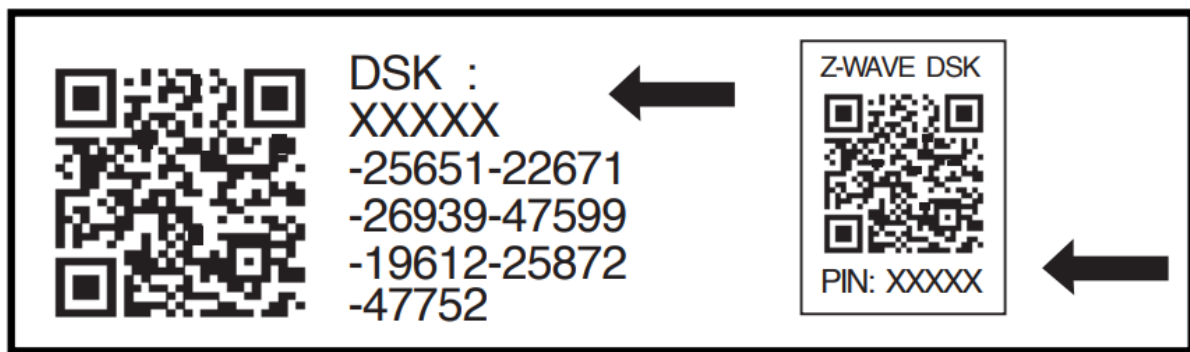
**NOTE:** Some hubs require an additional step for secure inclusion. When prompted, scan the QR code on the back of the remote or type the 5-digit pin code located on the back of the remote.

5. Following the instructions for your Z-Wave certified hub, assign actions for each button press. An action can be many combinations of scenes, groups or events, and is greatly dependent on the hub's capabilities.

If prompted by the controller to enter the S2 security code, refer to the QR code/security number on the side of the box or the QR code label on the product (see Figure 1). Enter the 5-digit PIN code.

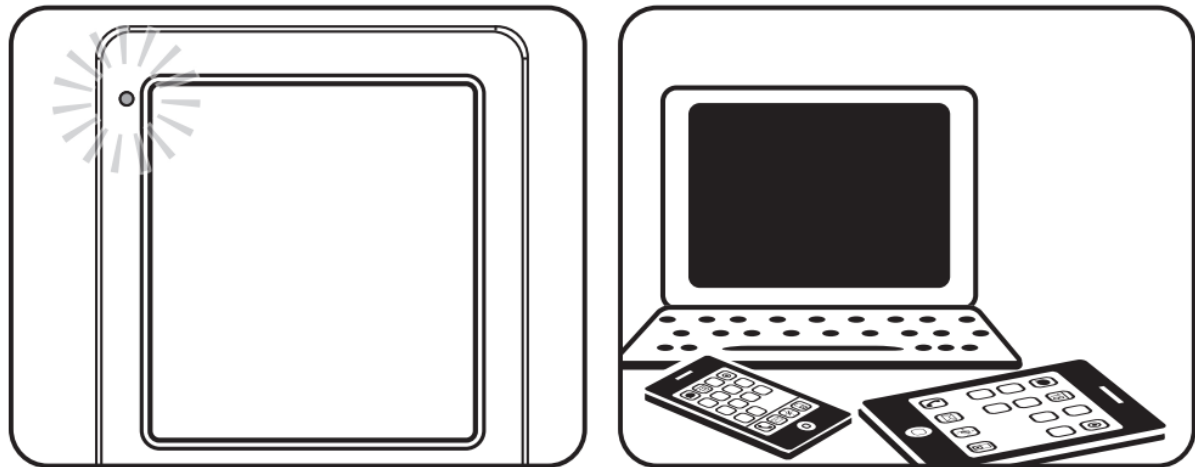
Figure 1:





<https://byjasco.com/HEP-ET/20000-99999/39339>

### Removing your remote from a Z-Wave network



1. Follow the instructions for your Z-Wave certified hub to remove a device from the Z-Wave network.
2. Once the hub is ready to remove your device, press and hold either button for three seconds.
3. The LED will flash two times when the remote sends a remove notification (NIF).

### Returning your remote to factory defaults

1. Press and release button 1 10 times quickly. All button presses must be within six seconds.
2. The LED will flash five times when completed successfully.

**NOTE:** This should only be used in the event your network's primary controller/the hub is missing or otherwise inoperable.

**NOTE:** SmartStart-enabled products can be added to a Z-Wave network by scanning the QR code on the product with a controller providing SmartStart inclusion. No further action is required and the SmartStart product will be added automatically within 10 minutes of being switched on in the network vicinity.

### Wakeup interval information

- Role type: Reporting Sleeping Slave (RSS)
- Wakeup interval: Supports a range of 0, 3600 seconds – 86,400 seconds (off, 1-24 hours)
- Default = 86,400 seconds (24 hours)
- Keep the default wakeup period to maintain the longest possible battery life. However, the minimum configurable value should be no less than 3600s (1hr) or to OFF 0s.

This device complies with Part 15 of the FCC and Industry Canada license-exempt RSS standards. Operation is subject to the following two conditions:

(1) this device may not cause harmful interference, and (2) this device must accept any interference received, including interference that may cause undesired operation.

**FCC NOTE:** The manufacturer is not responsible for any radio or TV interference caused by unauthorized modifications to this equipment. Such modifications could void the user's authority to operate the equipment.

**NOTE:** This equipment has been tested and found to comply with the limits for a Class B digital device, pursuant to Part 15 of the FCC Rules. These limits are designed to provide reasonable protection against harmful interference in a residential installation. This equipment generates, uses, and can radiate radio frequency energy, and if not installed and used in accordance with the instructions, may cause harmful interference to radio communications. However, there is no guarantee interference will not occur in a particular installation. If this equipment does cause harmful interference to radio or television reception, which can be determined by turning the equipment off and on, the user is encouraged to try to correct the interference by one or more of the following measures:

- Reorient or relocate the receiving antenna.
- Increase the separation between the equipment and receiver.
- Connect the equipment into an outlet on a circuit different to which the receiver is connected.
- Consult the dealer or an experienced radio/TV technician for help

**Important note:** To comply with the FCC RF exposure compliance requirements, no change to the antenna or the device is permitted. Any change to the antenna or the device could result in the device exceeding the RF exposure requirements and void the user's authority to operate the device.

#### Responsible Party – US Contact Information

ZW5313

FCC — U2ZZW5313

IC: 6924A-ZW5313

Jasco Products Company

Model: ZW5313/53829

10 E. Memorial Rd., Oklahoma City, OK 73114 | 1-800-654-8483

CAN ICES-3(B)/NMB-3(B)

All brand names shown are trademarks of their respective owners.

MADE IN CHINA

DISTRIBUTED BY

JASCO PRODUCTS COMPANY LLC,

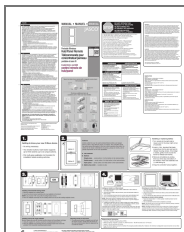
10 E. MEMORIAL RD.,

OKLAHOMA CITY, OK 73114.

©JASCO 2020 | 53829

ZW5313 | 07/24/20 v1

## Documents / Resources



[JASCO ZW5313 Z-Wave 700s 2-Button Simple Controller](#) [pdf] User Manual  
ZW5313, U2ZZW5313, ZW5313 Z-Wave 700s 2-Button Simple Controller, Z-Wave 700s 2-Button Simple Controller, 700s 2-Button Simple Controller, Simple Controller

## References

- [Z-Wave by Jasco](#)
- [J Jasco](#)
- [J Support](#)

