



JASACO 20063, 20064 Code Window Handle



Contents [[hide](#)]

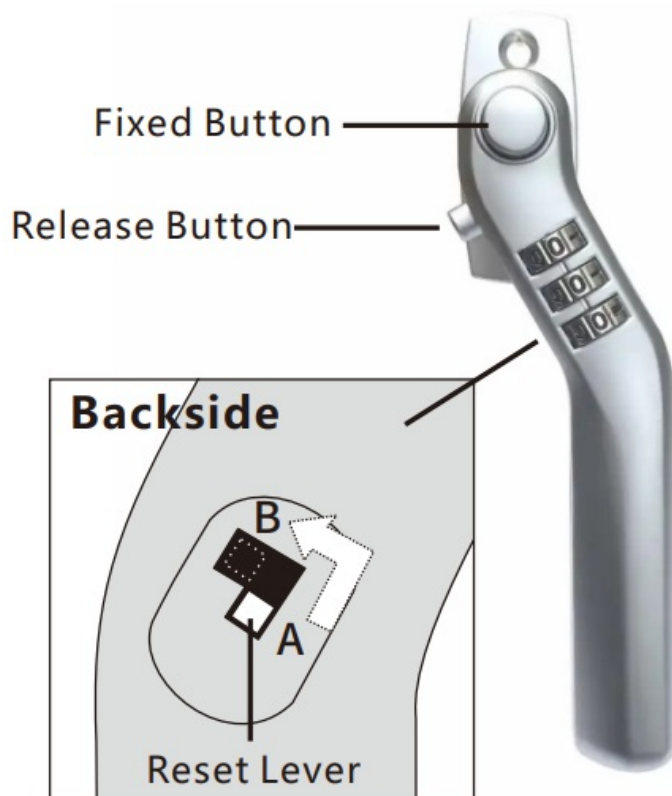
- [1 Unlocking and Locking](#)
- [2 Lock Handle with Reset Feature](#)
- [3 Setting](#)
- [4 Documents / Resources](#)
 - [4.1 References](#)

Unlocking and Locking

The initial factory-set combination is 0-0-0, Please change this to your own combination before using the handle.

1. Rotate dials to the current combination and press down on the Release Button to unlock the handle.
2. Press down on Fixed Button and scramble the combination dials to lock the handle.


Lock Handle with Reset Feature



Setting

1. Rotate dials to the current combination.
2. Push the Reset Lever from A to B. The lever remains in this position.
3. Rotate dials to your desired combination.
4. Push the Reset Lever from B to A, back to the original position.
5. Scramble the combination dials to lock the handle.

Documents / Resources

	JASACO 20063, 20064 Code Window Handle [pdf] Instruction Manual 20063, 20064, 20063 20064 Code Window Handle, 20063 20064, Code Window Handle, Window Handle, Handle
---	---

References

- [User Manual](#)

■ JASACO

🔍 20063, 20063 20064, 20063 20064 Code Window Handle, 20064, Code Window Handle, Handle, JASACO, Window Handle

Leave a comment

Your email address will not be published. Required fields are marked *

Comment *

Name

Email

Website

☐ Save my name, email, and website in this browser for the next time I comment.

Post Comment

Search:

e.g. whirlpool wrf535swhz

Search

[Manuals+](#) | [Upload](#) | [Deep Search](#) | [Privacy Policy](#) | [@manuals.plus](#) | [YouTube](#)

This website is an independent publication and is neither affiliated with nor endorsed by any of the trademark owners. The "Bluetooth®" word mark and logos are registered trademarks owned by Bluetooth SIG, Inc. The "Wi-Fi®" word mark and logos are registered trademarks owned by the Wi-Fi Alliance. Any use of these marks on this website does not imply any affiliation with or endorsement.