



# jap BIONIC BLAST Torando S1 Instruction Manual

[Home](#) » [JAP](#) » jap BIONIC BLAST Torando S1 Instruction Manual

## Contents [ [hide](#) ]

- 1 jap BIONIC BLAST Torando S1
- 2 Warning and safety precaution
- 3 Battery instructions
- 4 Components
- 5 Read before use
- 6 Cleaning the dust tank
- 7 Accessories
- 8 Maintenance
- 9 Specifications
- 10 Disposal of electrical appliances
- 11 Support and warranty
- 12 Documents / Resources
  - 12.1 References
- 13 Related Posts



jap BIONIC BLAST Torando S1



## Warning and safety precaution

Read these instructions carefully before using the appliance. Keep this instruction manual for future use.

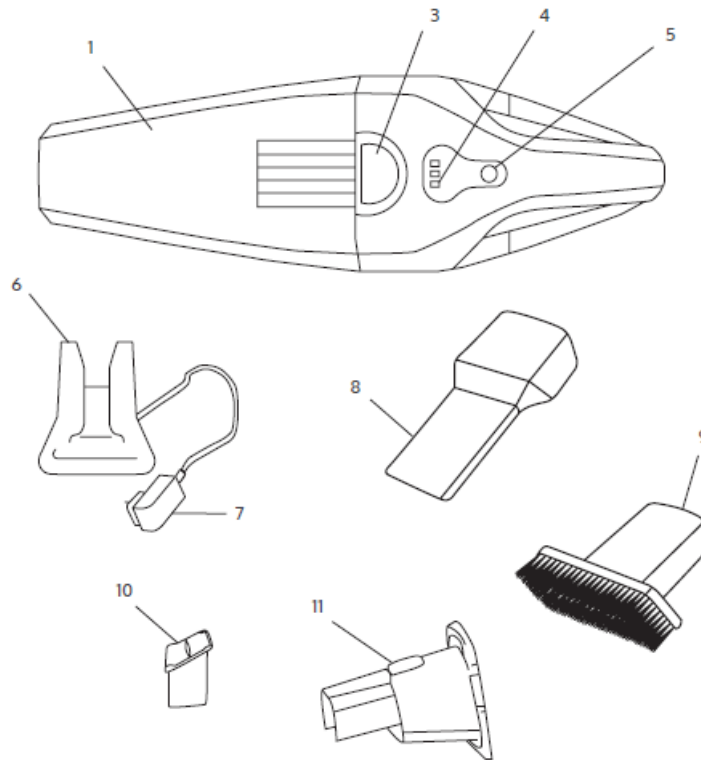
- Children should be supervised to ensure that they do not play with the appliance.
- This appliance is designed for domestic use only.
- Pull from the plug, not the cord, to disconnect it from the wall plug.
- Do not leave the appliance unattended while in use.
- Do not use the device if it has been dropped or if there are any signs of damage.
- Do not attempt to repair any part of the product by yourself.
- Only use the device with the accessories supplied.
- Make sure your hands are dry before handling the plug or switching on the appliance.
- Do not place the appliance close to heat sources or flammable substances.
- This appliance incorporates batteries which contain materials that are hazardous to the environment. The batteries must be removed from the appliance before it is disposed of.
- Do not point the vacuum cleaner at persons or animals when operating.
- When vacuuming liquids, make sure not to overfill the tank, as this will block the filters and may cause seriously damage to the appliance.
- Do not vacuum large or sharp broken glasses.
- Do not vacuum reactive liquids (solvent, corrosive, detergent...).
- Do not vacuum inflammable or explosive substances such as gasoline or alcohol.

## Battery instructions

This appliance includes Li-ion batteries, do not incinerate or expose them to high temperatures, as they may explode. Leaks from the battery or battery cells can occur under extreme conditions. Do not touch any liquid that

leaks from the battery. If the liquid gets into contact with skin, wash immediately with soap and water. If the liquid gets into the eyes, flush them immediately with clean water for a minimum of 10 minutes and seek medical attention. Wear gloves to handle the battery and dispose of immediately in accordance with local regulations. Avoid contact between the battery and small metallic objects such as paper clips, coins, keys, nails or screws. Before a new battery is used or the battery is used for the first time after long-term storage, fully charge the battery. When the device is stored and not used for long periods of time, ensure that the battery pack is fully charged.

## Components



1. Dust tank
2. HEPA Filter
3. Dust tank release button
4. LED indicator
5. Power button
6. Charging station
7. Power adapter
8. Accessory for corners
9. Accessory for car/furniture
10. Accessory for liquid
11. Filter cover

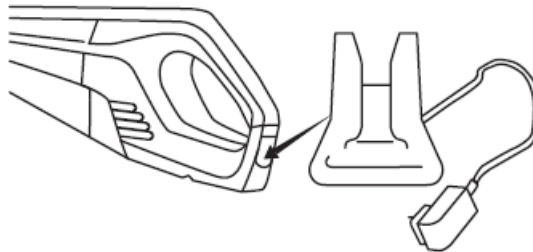
## Read before use

Carefully read the warning and safety precaution. Check the product for any visible damage. If any, contact japroducts as soon as possible.

## Functioning

- Occasionally check that the nozzle is clean from any object, it may scratch sensitive surfaces
- Insert the needed accessory into the main unit when cleaning tables, cars, corners, sofas, carpets, etc.
- Insert the rubber nozzle into the main unit when vacuuming liquids.
- Turn on/off the device by pushing the power button.
- Do not exceed the MAX mark on the dust tank when vacuuming liquids.
- Do not connect the adapter while using the product.
- Insert the adapter into a socket. Always make sure that the vacuum cleaner is turned off before connecting it to the power adapter.
- The light indicator will turn on blue and flash once the device has made contact with the adapter.
- When using the appliance, the light indicator will turn steady blue.
- To ensure it is always ready for use, the device should be kept charging with the adapter while not in use.
- The adapter may become warm during charging.
- The blue light indicator will flash again when battery is low.

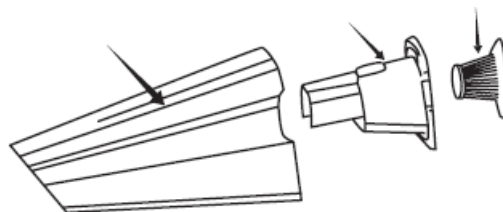
## Warning



- The vacuum cleaner should not be used during the charging process.
- The battery provided is the only one suitable for the vacuum cleaner. Do not use the charger for a non-rechargeable battery.
- Unplug the vacuum cleaner if it is not going to be used during long periods of time.

You can charge the product from its charging base or by plugging it directly.

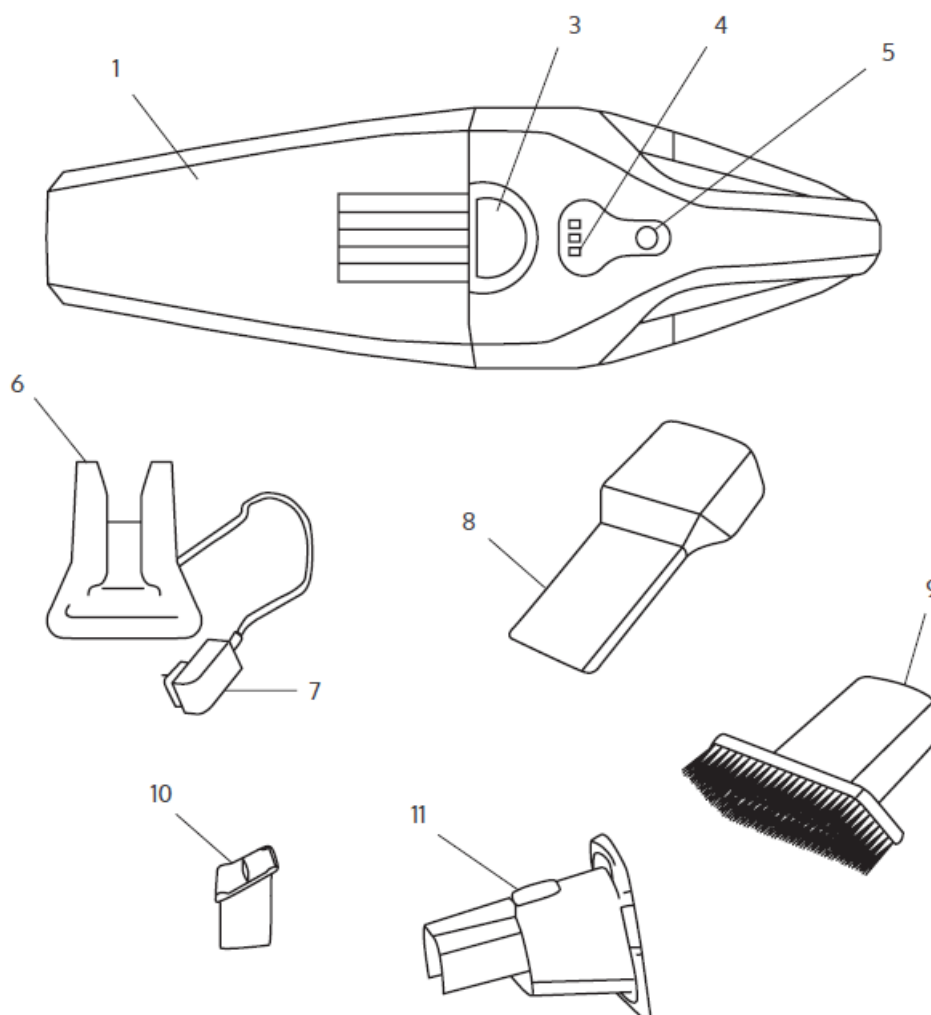
## Cleaning the dust tank



- Remove the whole dust tank by pressing the release button and taking it out.
- Take out the filters and the plastic protector and empty the contents of the dust tank.
- The filter can be shaken clean or cleaned and rinsed with warm water (no detergents). Make sure all the parts are completely dry before reinstalling them.
- Wash and rinse the tank if necessary.
- Place the tank back into its position. A click will be heard, indicating it is properly fixed.

**Note:** make sure all the parts are dry before placing them back in their position. Place the filter in the dust tank. Assemble the dust tank in the motor unit following the opposite procedures as for detaching the dust tank.

## Accessories



- Accessory for corners; used for vacuuming corners and less accessible areas. (Fig. 1 – 8)
- Accessory for car/furniture; used for vacuuming cars and less accessible areas. (Fig. 1 – 9)
- Accessory for liquids; used for vacuuming liquids. (Fig. 1 – 10)
- Charging station; used for charging the vacuum cleaner. (Fig. 1 – 6)

## Maintenance

- Use soft, dampened clean cloth to clean the vacuum.
- Wash the dust tank with water and dry before using.

## Specifications

- **Model:** Bionic Blast Tornado S1 (11,1V)
- **Product reference:** T-S1
- **Power supply:** 220-240V, 50/60Hz

Made in China, Designed in the Netherlands.



## Disposal of electrical appliances

The European directive 2012/19/EU on Waste Electrical and Electronic Equipment (WEEE), specifies that old household electrical appliances must not be disposed of with the normal unsorted municipal waste. Old appliances must be collected separately, in order to optimise the recovery and recycling of the materials they contain, and reduce the impact on human health and the environment. The crossed out “wheeled bin” symbol on the product reminds you of your obligation to dispose of the appliance correctly. Consumers must contact their local authorities or retailer for information concerning the correct disposal of old appliances and/or their batteries.

## Support and warranty

This product is under warranty for 2 years from the date of purchase, proof of purchase is required. The product must be in perfect physical condition and has followed given guidelines.

### The warranty will not cover the following situations


- The product has been used for purposes other than those intended for it, misused, beaten, exposed to moisture, immersed in liquid or corrosive substances, as well as any other fault attributable to the customer.
- The product has been disassembled, modified, or repaired by persons, not authorised by jap products.
- Faults deriving from the normal wear and tear of its parts, due to use.
- The warranty service covers every manufacturing defects of your appliance for 2 years, based on current legislation, except consumable parts. In the event of misuse, the warranty will not apply.

If at any moment you detect any problem with your product or have any doubt, do not hesitate to contact jap products at +31 736447405.

## Bionic Blast

- Bionic Blast Tornado S1 11,1V Wet&Dry
- **Model:** T-S1
- 2200mAh, 100-240V-50/60Hz
- Made in China – Designed in the Netherlands
- [www.japproducts.nl](http://www.japproducts.nl)

## Documents / Resources

	<p><a href="#">jap BIONIC BLAST Torando S1</a> [pdf] Instruction Manual BIONIC BLAST Torando S1, BIONIC BLAST, Torando S1, BIONIC, Torando</p>
---	--

## References

-  [Household appliances | JAP that's right](#)