

JANOME Stitch Composer Application Installation Guide

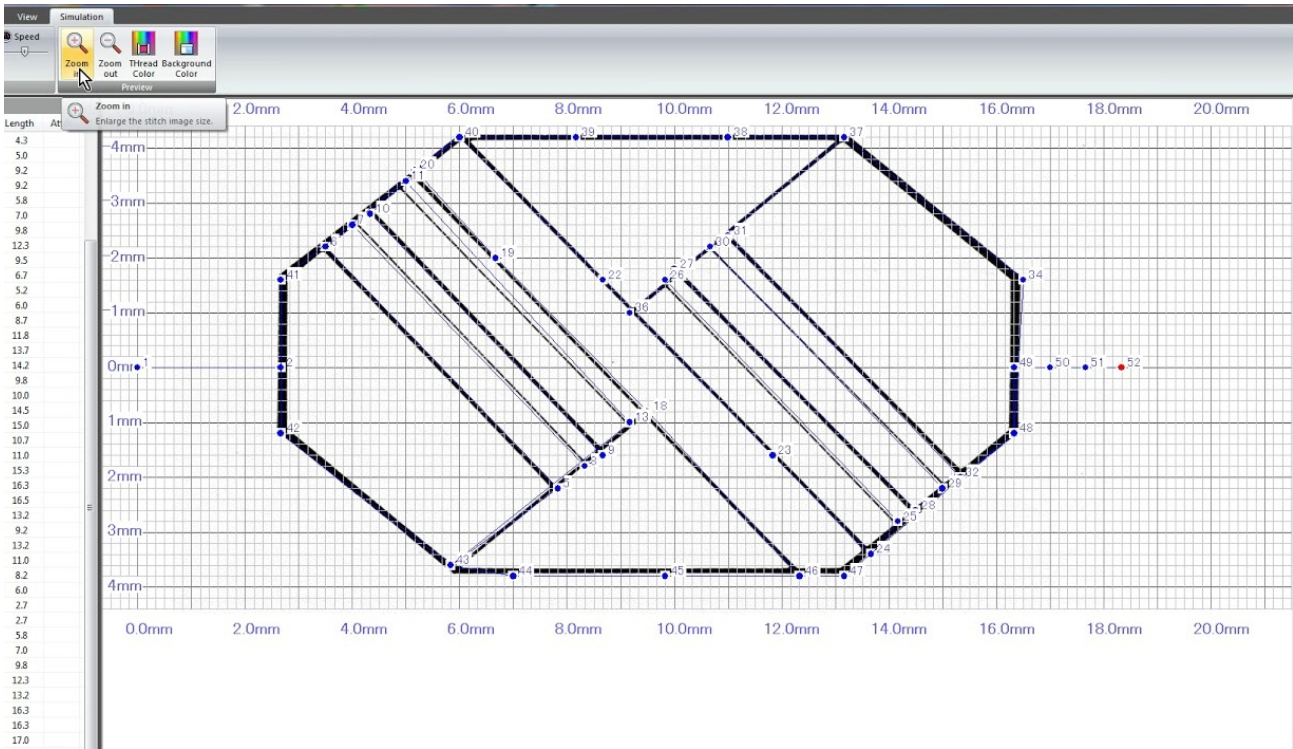
[Home](#) » [Janome](#) » JANOME Stitch Composer Application Installation Guide 

Contents

- 1 JANOME Stitch Composer Application
- 2 Installation Method
- 3 Documents / Resources
- 4 Related Posts

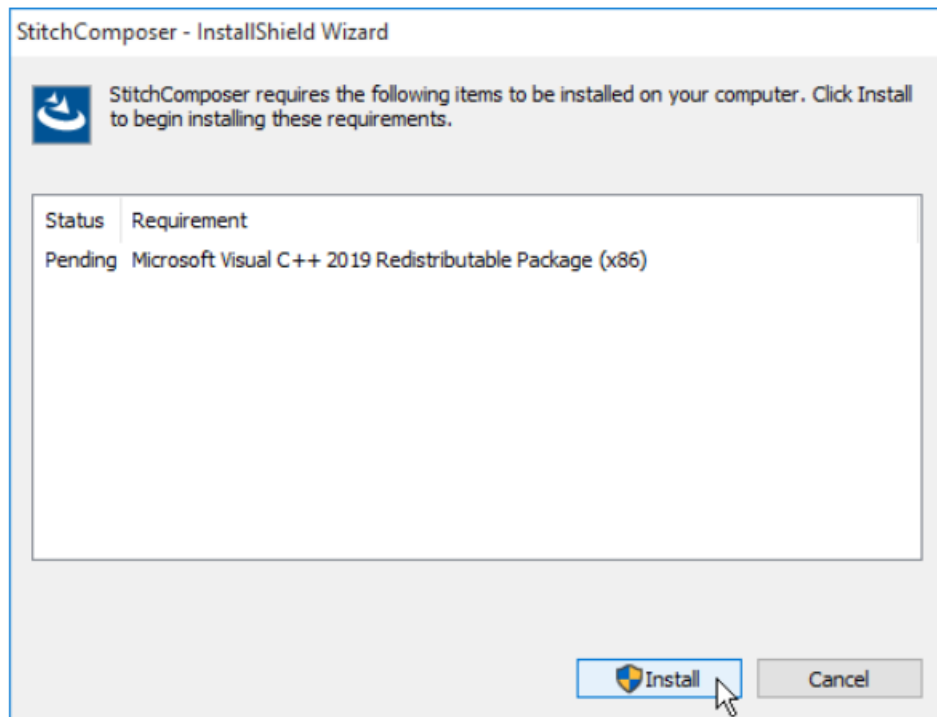
JANOME

JANOME Stitch Composer Application

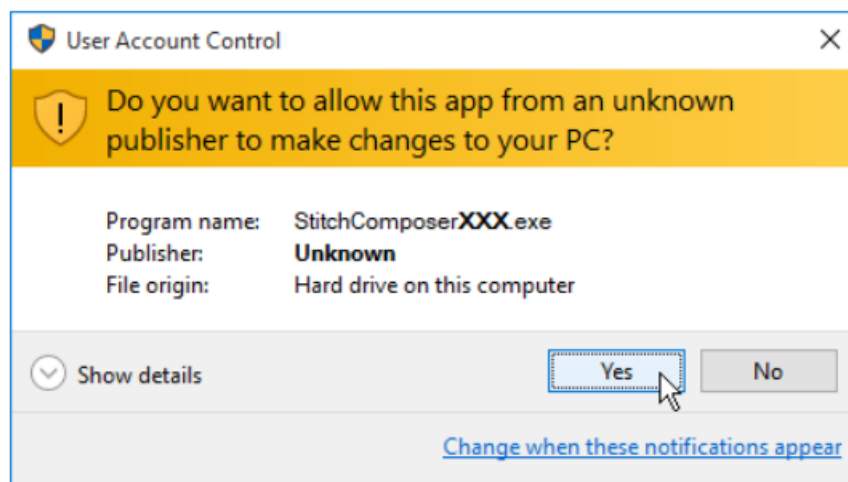


Installation Method

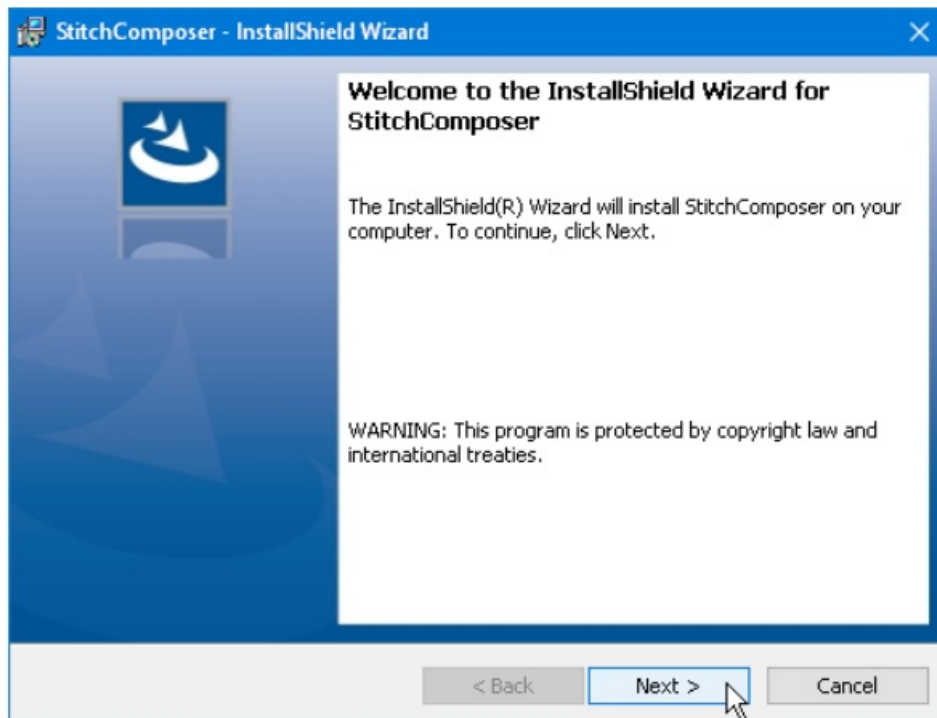
1. Download the file from the website and save it on yours.
2. Double-click the downloaded installation file.
3. If the following dialog is not displayed, go to Step 5. The “InstallShield Wizard” starts up automatically. Click “Install” to start the installation.



4. If the “User Account Control” dialog box opens, click “Yes”. The XXX on the image is a three-digit number that indicates the version of the file you downloaded in step 1



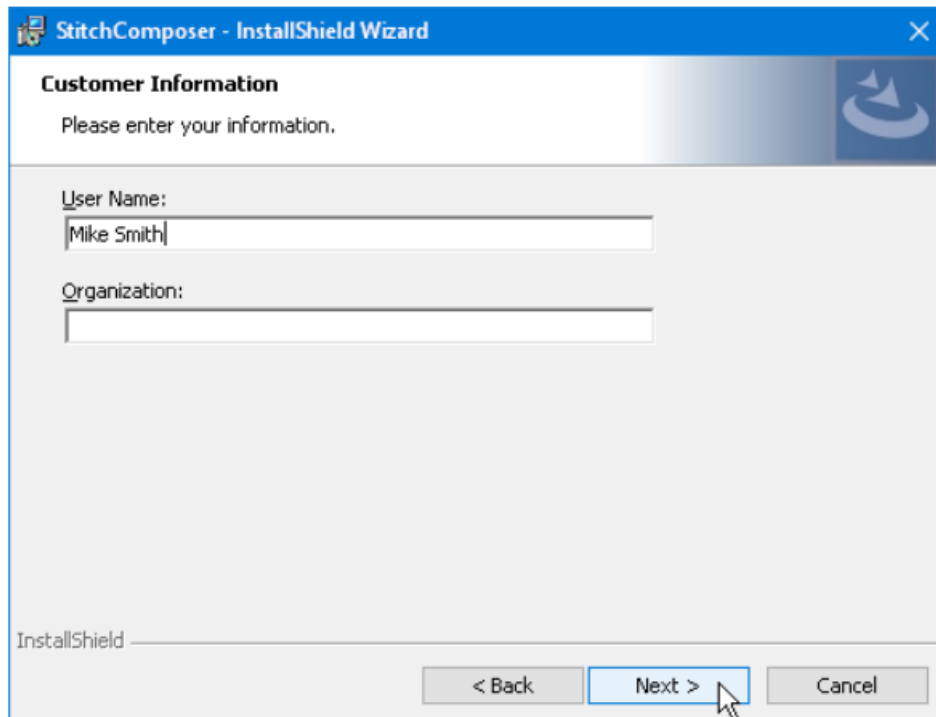
5. The “InstallShield Wizard” starts up automatically. Click “Next”.



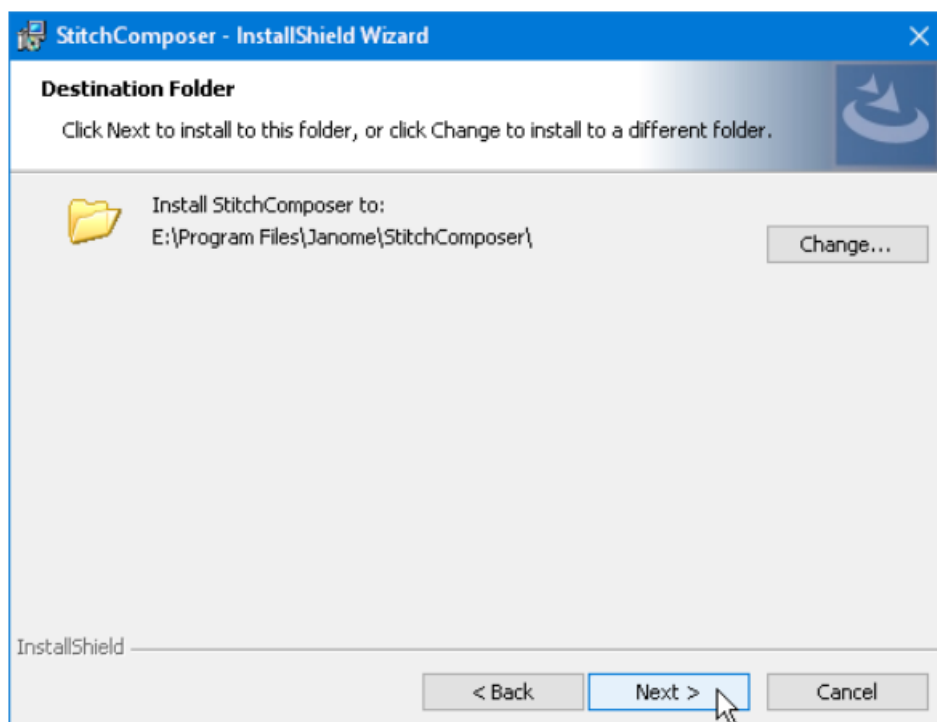
6. The end user license agreement (EULA) will appear. Read the EULA and check “I accept the terms in the license agreement” if you agree. Click “Next”.



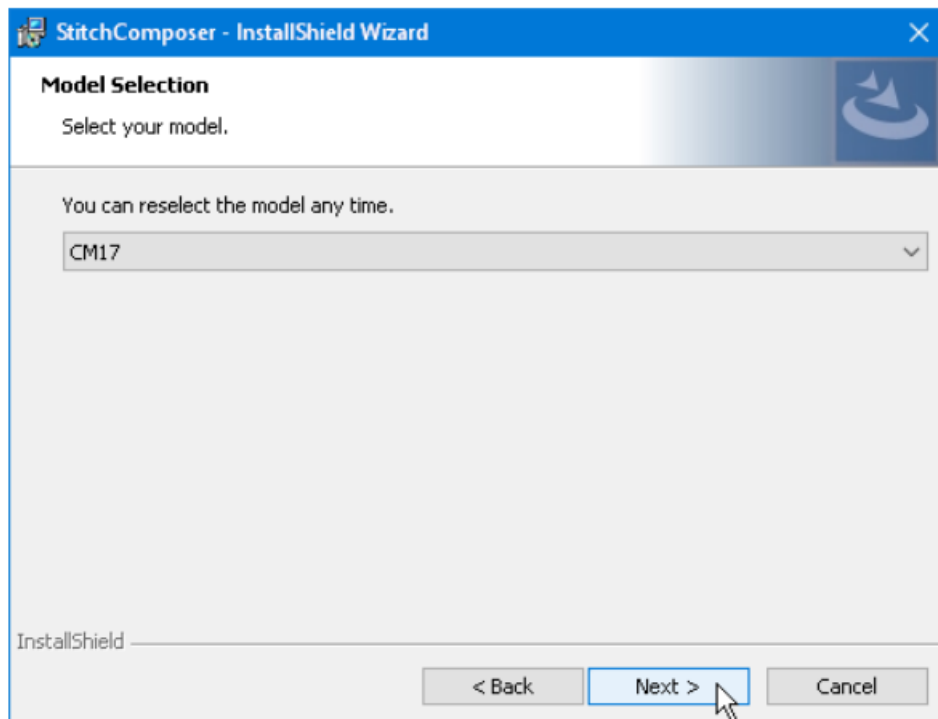
7. The user name and organization information set on your PC will be displayed. User information entry is not required. Click “Next”.



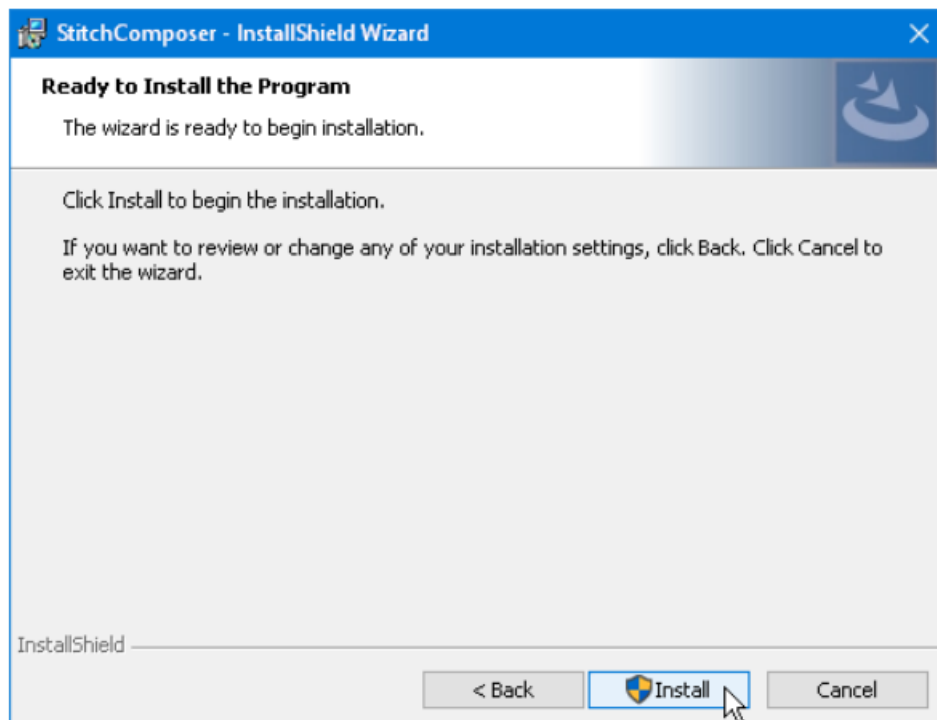
8. Click "Next" if you accept the installation location. If you wish to change the installation location, click "Change" and select the desired folder. Click "Next".



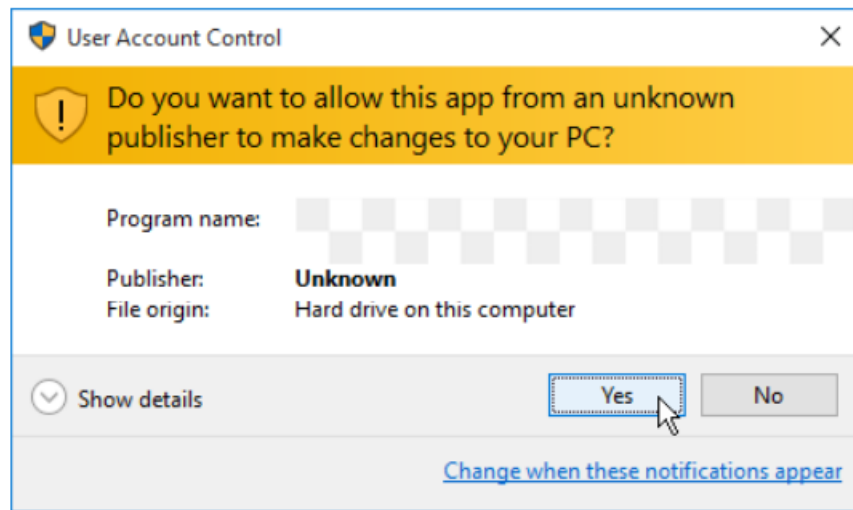
9. Select your sewing machine and click it. Click "Next". You can reselect the model any time.



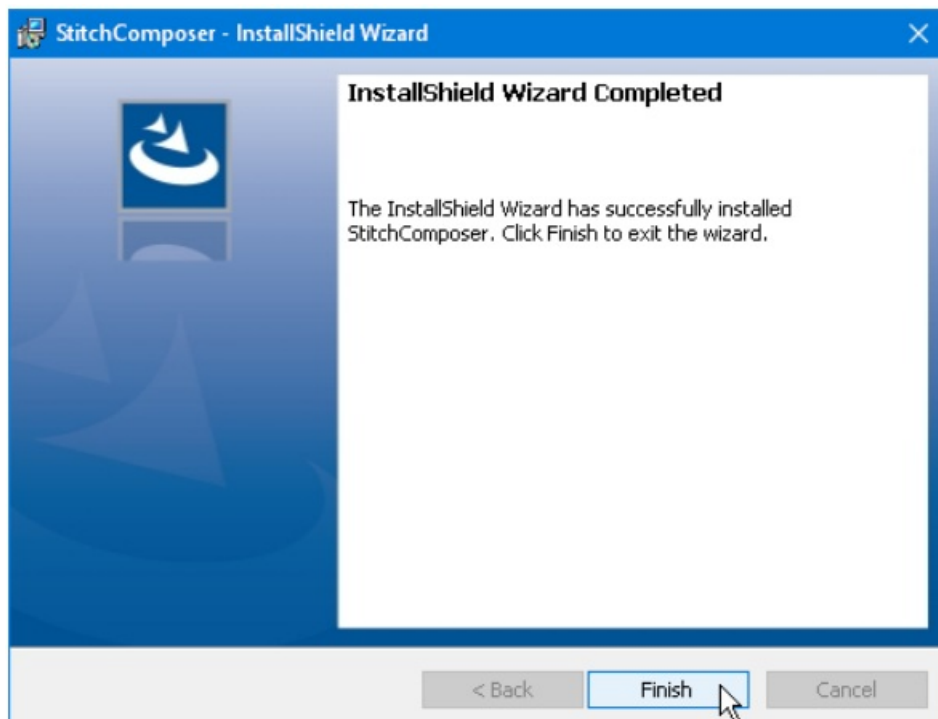
10. Click "Install" to start the installation.



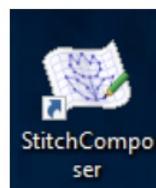
11. If the "User Account Control" dialog box opens, click "Yes".




12. When software is successfully installed, click "Finish" to exit.



13. The icon appears on your desktop.



Documents / Resources

	<p>JANOME Stitch Composer Application [pdf] Installation Guide</p> <p>Stitch Composer Application, Stitch Composer, Application</p>
---	--