

[Skip to content](#)

Manuals+

User Manuals Simplified.



Janitza GridVis App Management User Guide

[Home](#) » [janitza](#) » Janitza GridVis App Management
User Guide

Contents [hide](#)

[1 Janitza GridVis App Management](#)

[2 Introduction](#)

[2.1 Brief description](#)

[2.2 Starting the Assistant](#)

[3 App Management](#)

[3.1 “Device selection” window](#)

[3.2 “Action selection” window](#)

[4 Installing and removing](#)

[4.1 “App selection” window](#)

[5 Devices and apps](#)

[5.1 “Overview” window](#)

[6 Documents / Resources](#)

[6.1 References](#)

[7 Related Posts](#)

Janitza®

Janitza GridVis App Management



Subject to technical alterations.

The contents of our documentation have been compiled with great care and reflect the current state of the information available to us. Nonetheless, we wish to point out that updates of this document are not always possible

at the same time as technical refinements are implemented in our products. Information and specifications are subject to change at any time.

Please see our website under www.janitza.de for the current version.

Introduction

Brief description

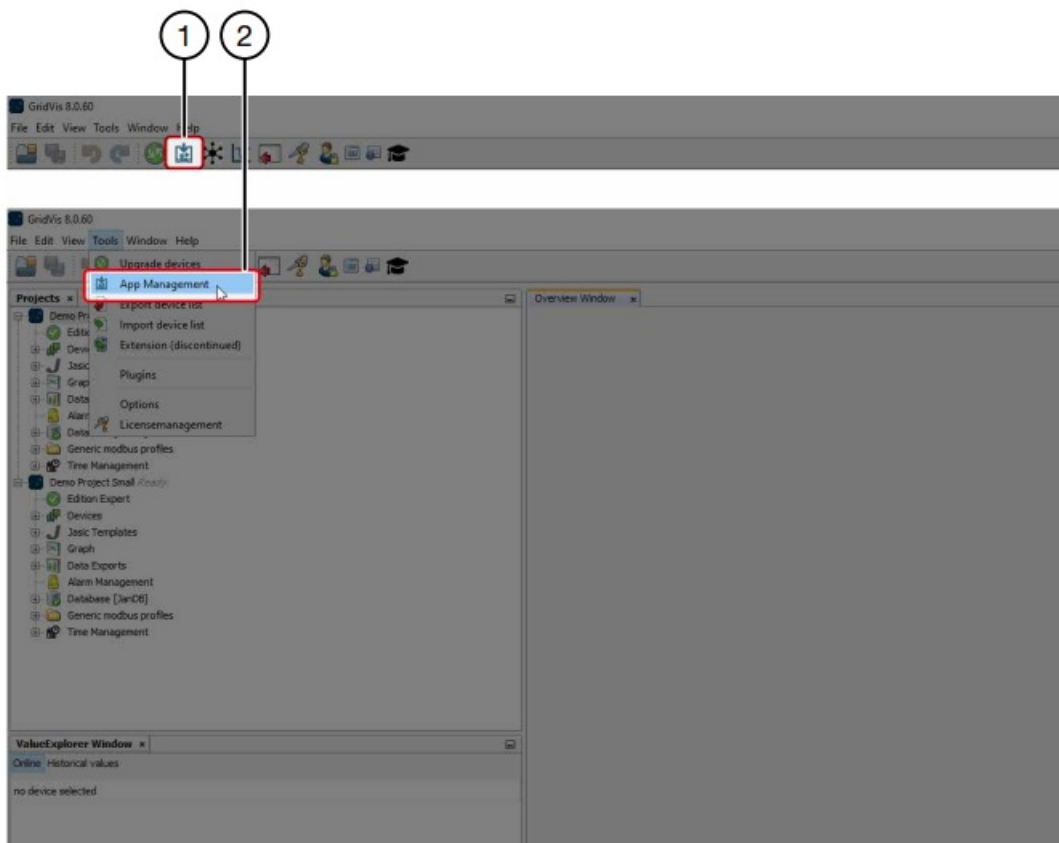
The App Management Assistant is integrated in GridVis® and guides you step by step through the installation of the apps for your devices. Detailed functional descriptions of the individual apps can be found on our homepage in the Download Center at www.janitza.de.

A more detailed functional description of the App Management Assistant can be found in our online help at www.janitza.de.

INFORMATION

To be able to install apps, your Janitza device must have at least firmware 5.000. Make sure that you keep the firmware on your device up to date.

Starting the Assistant



To install/uninstall, start the App Management Assistant.

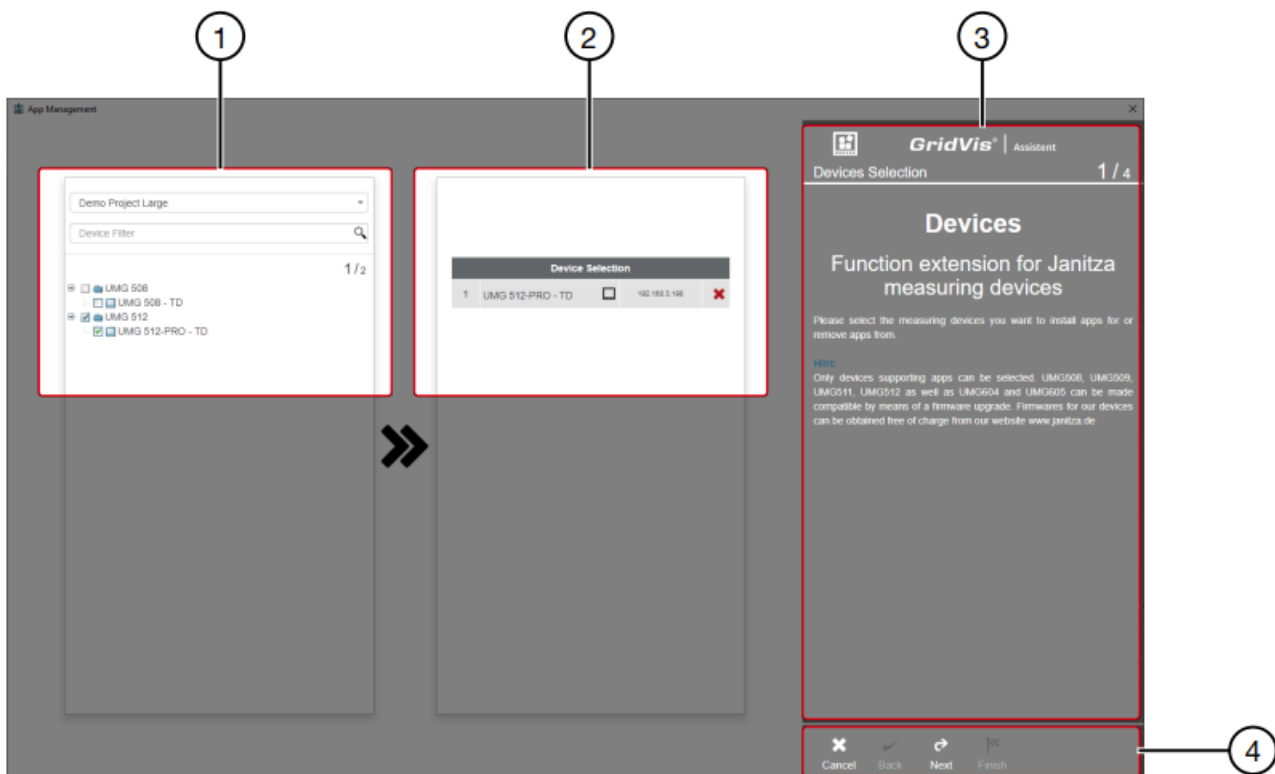
1. To do so, click the App Management icon in the toolbar.
2. Alternatively, click on “App Management” under the “Extras” menu bar item.

INFORMATION

Make sure that communication is not disconnected during the installation/uninstallation of apps.

App Management

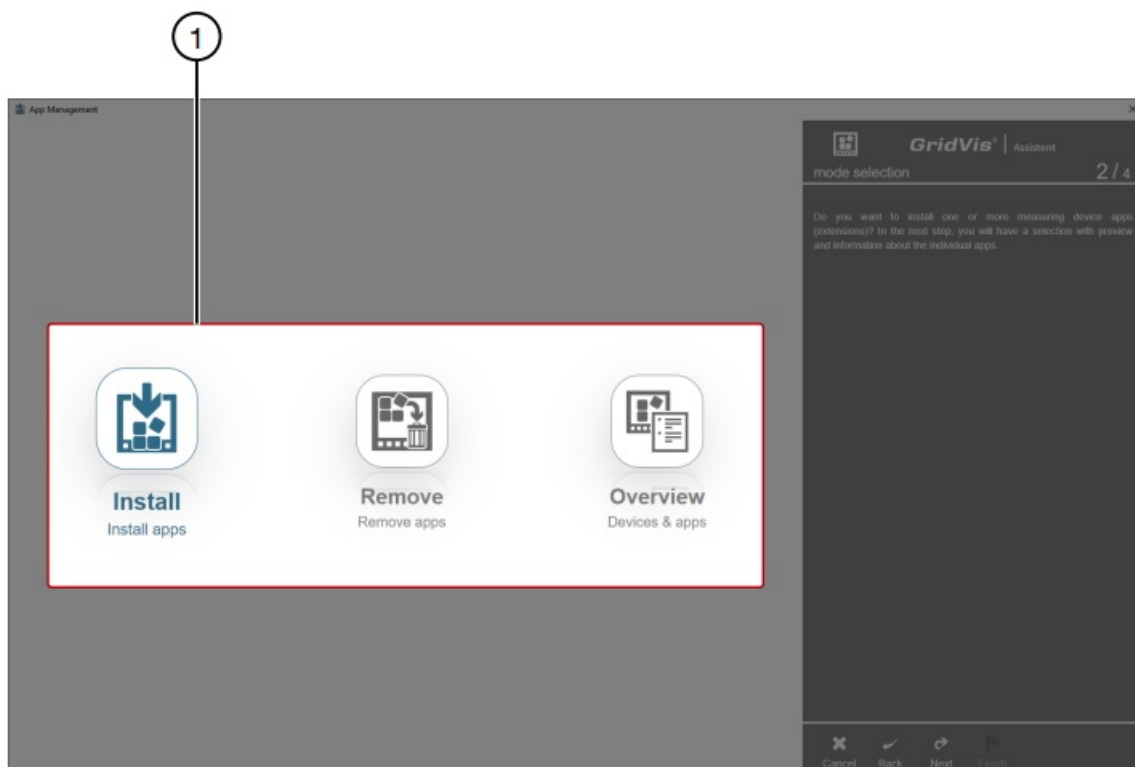
“Device selection” window



All projects and devices appear after the App Management Assistant is launched.

1. Select one or more devices of a project in which you want to install or remove apps. The search function can facilitate a search for a specific device.
2. Selected devices are listed in a table. If you move your mouse over an entry, additional information like firmware version, IP and MAC address will be displayed in a pop-up window.
3. Further information on the current action step or app appears in the window in the right.
4. Command bar for entering the next action. Confirm the device selection with "Next".

"Action selection" window



After confirming with the "Next" button, the action selection window opens.

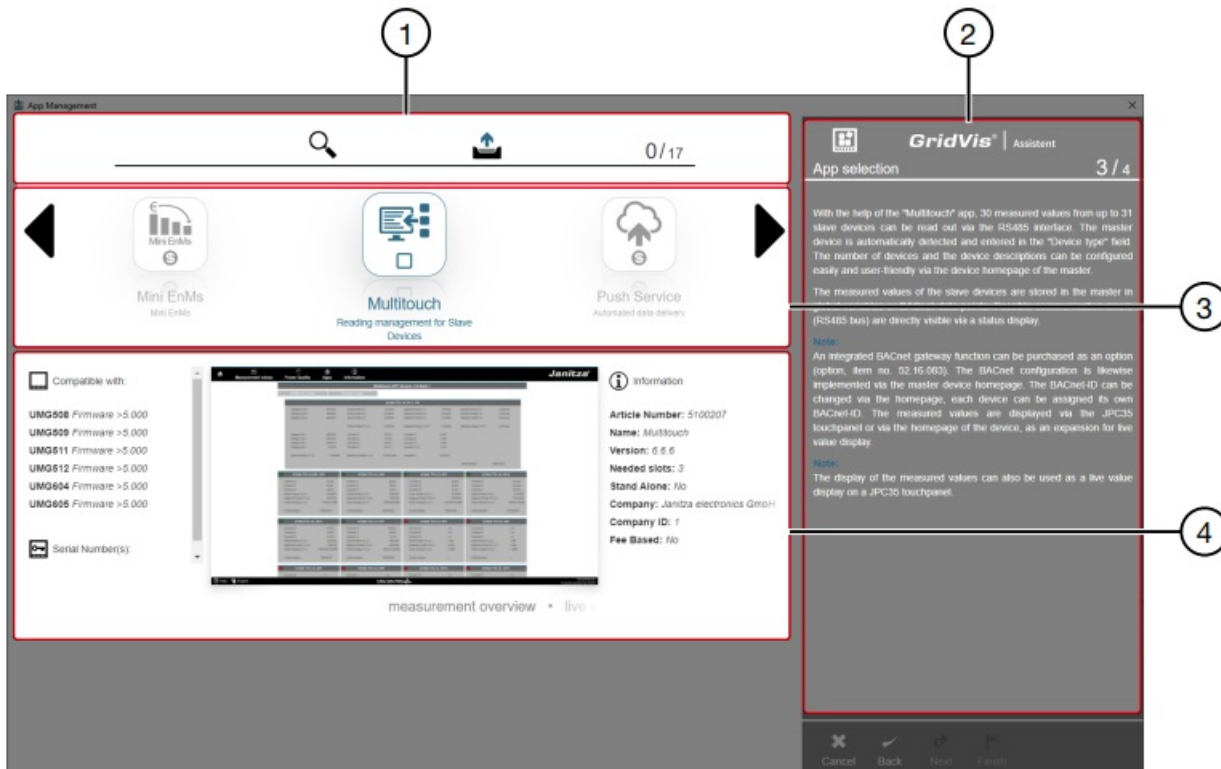
1. Select an action using the corresponding button. For more information on action selection, see the right side panel.

INFORMATION

Installing an app requires enough memory in the device. See the notes in chapter 4 “Overview” and the explanation of the (memory) slot overview in our online help at wiki.janitza.de.

Installing and removing

“App selection” window



After you select the “Install” or “Remove” action, the “App Selection” window appears in both cases.

1. Opens a search field for an arbitrary text search. If you know the name of the app, you can enter it here.

Opens an “Open File” dialog in which you can upload customer-specific or for-purchase apps to the assistant.

1 / 17

Display of the number of selected apps to be installed or removed.

2. Detailed description of the functionality of the selected app.
3. Listing of the available apps. The scroll bar can be operated with the arrows on the right and left. The selected app is highlighted in color in the list. Select your app. To do so, click on the icon. The checkbox inside the icon indicates the active selection.



Apps that require payment are marked with . These must first be purchased. After purchase you will

receive a file from us, which you upload to the assistant via the “Open File” dialog . Then you can select and install the app.

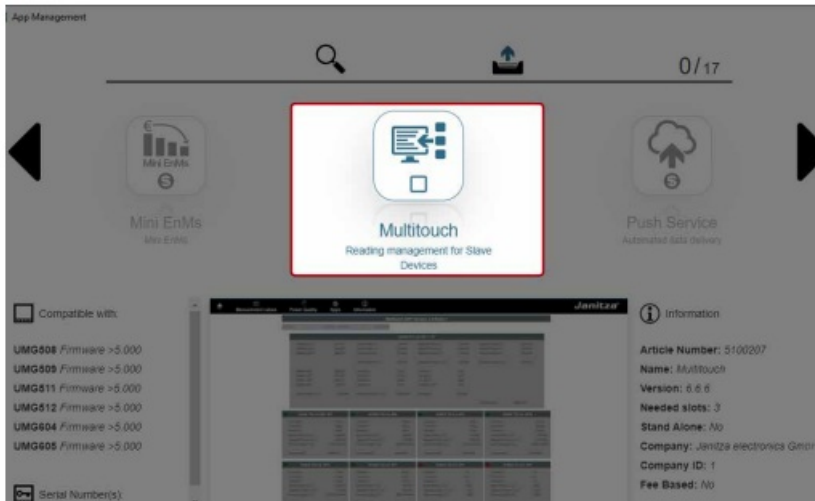


4. A compatibility list on the left tells you if the selected app is compatible with your device. Furthermore, information such as the version status and required number of slots can be seen.

App installation

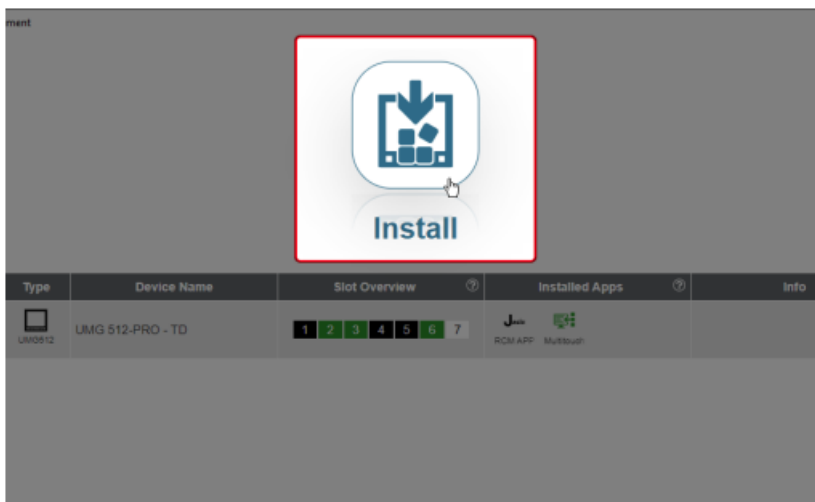
1. Select app

In the scroll bar, select the app you need to install. Confirm the selection with “Next”.

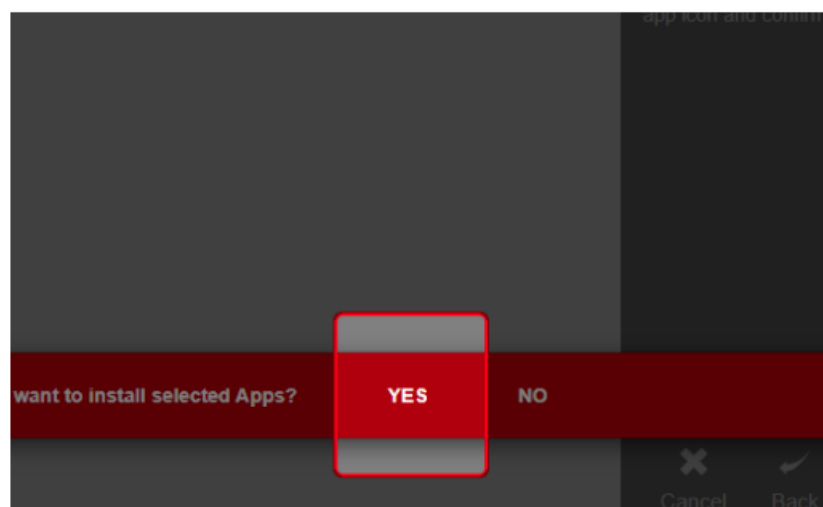


2. Install app

Use the “Install” button to start the installation.



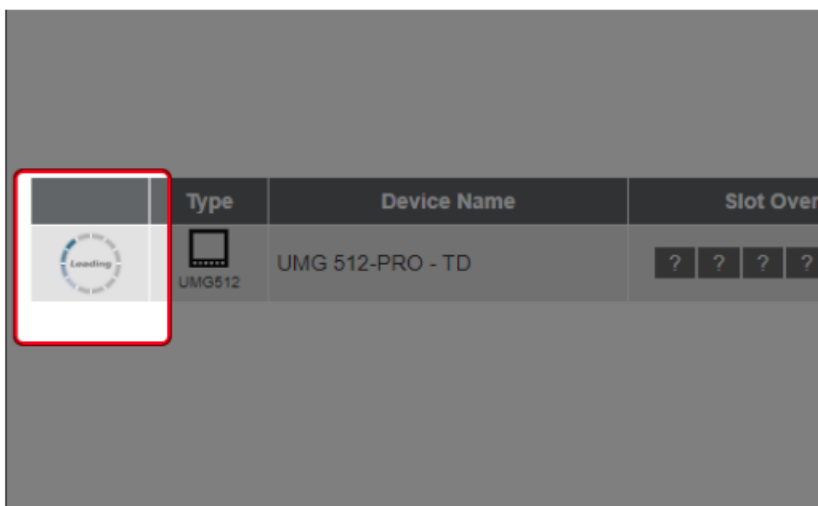
3. Confirm installation



Confirm the query with “YES”.

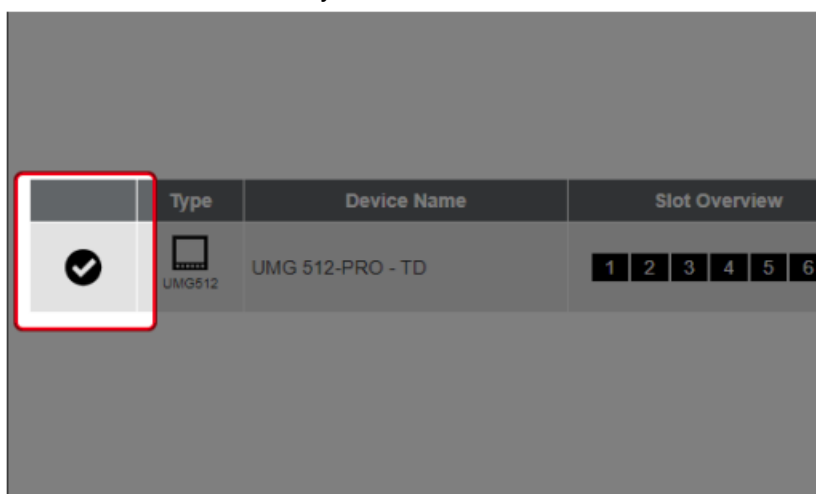
4. Progress indicator

The progress indicator shows the execution of the action throughout its entire duration.



5. Installation finished


Successful installation is indicated by a check mark on the device line. Use the “Done” button to close the

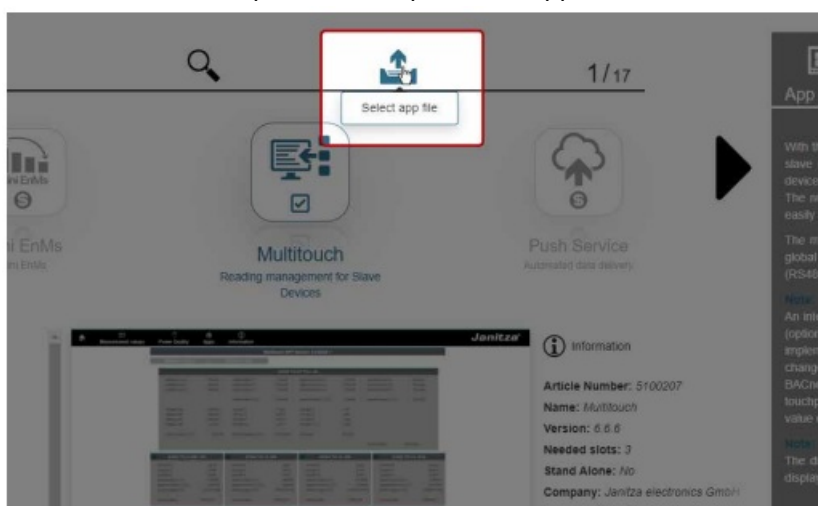


assistant.

Installation of customer-specific / for-purchase apps

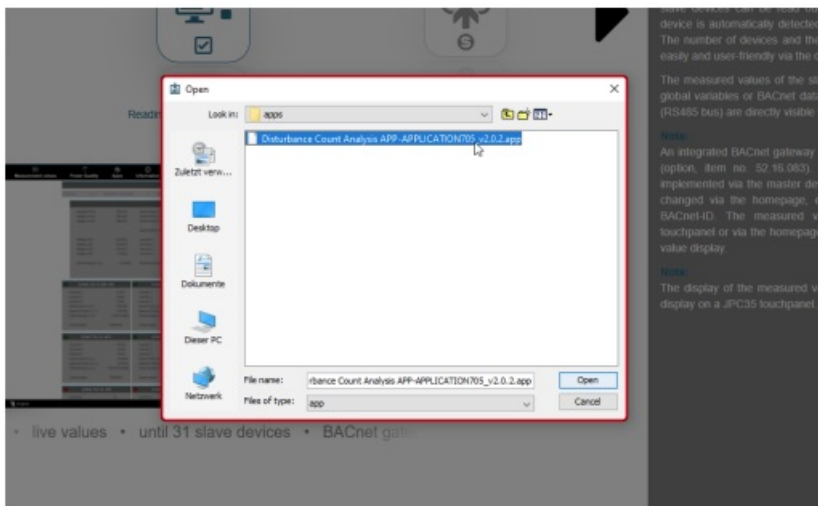
1. Open dialog

To install customer-specific or for-purchase apps, click  .



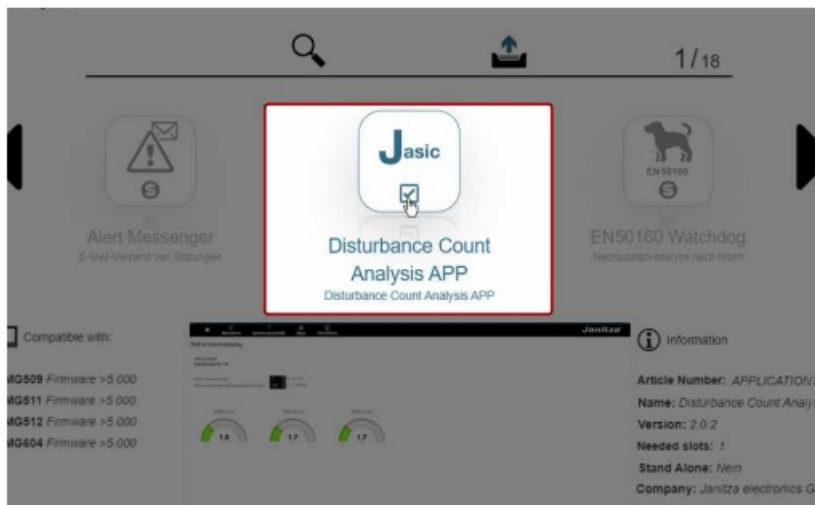
2. Upload app

Select the file in the “Open File” dialog. Confirm with “Open”.



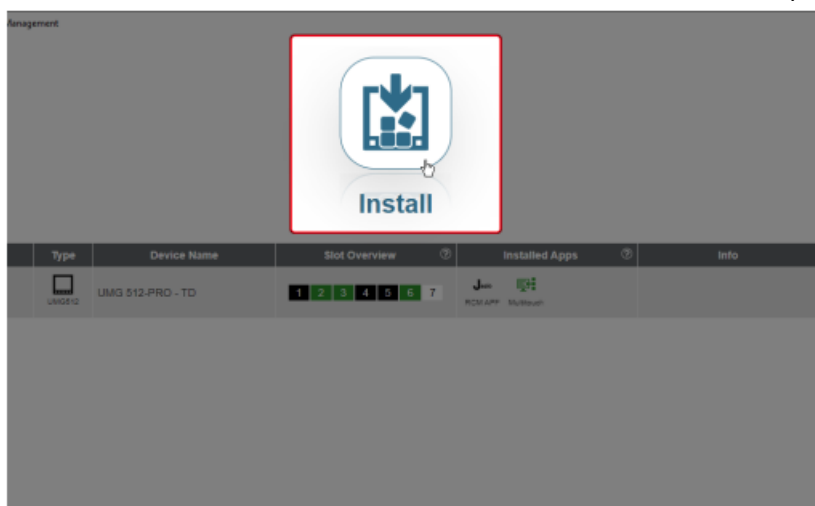
3. Select app

In the scroll bar, select the app you need to install. Confirm the selection with “Next”.



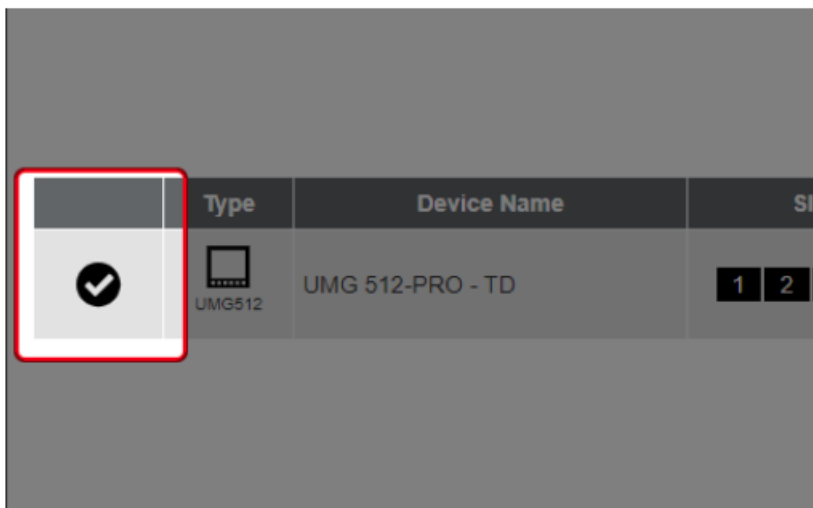
4. Install app

Use the “Install” button to start the installation. Confirm the subsequent query with “YES”.



5. Installation finished

Successful installation is indicated by a check mark on the device line. Use the “Done” button to close the

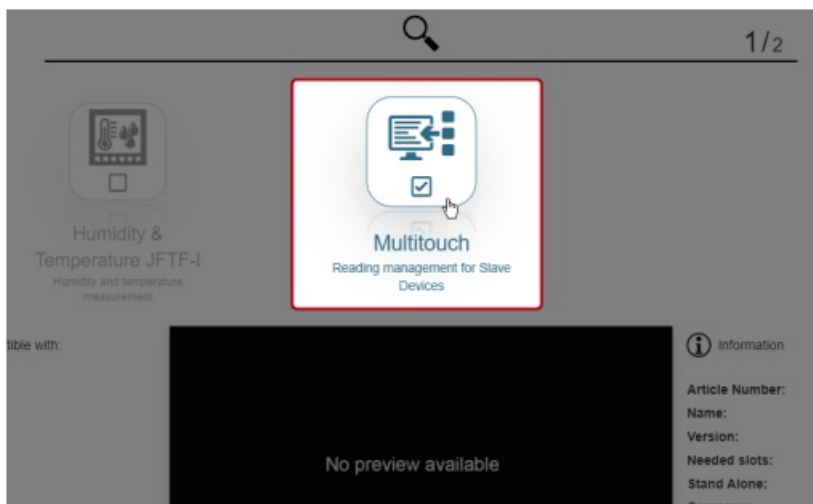


assistant.

Removing apps

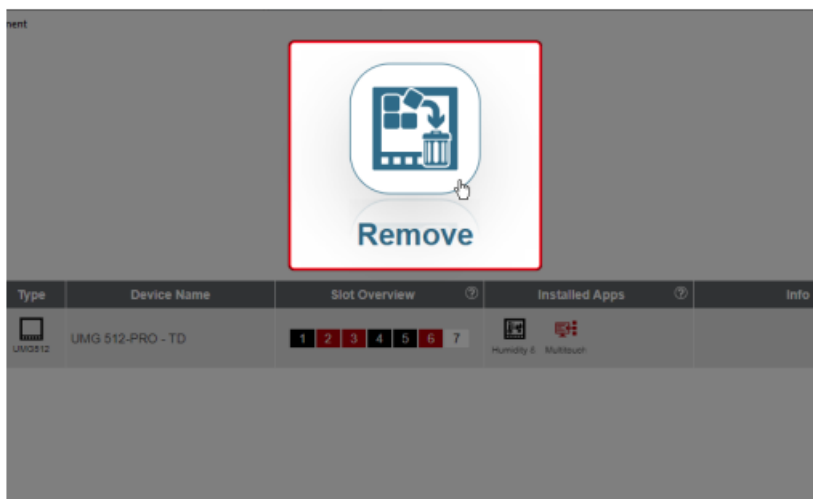
1. Select app

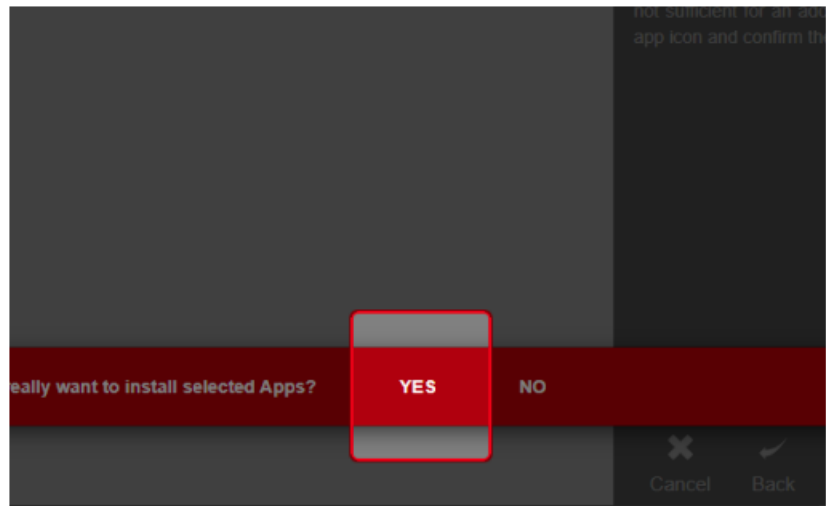
In the scroll bar, select the app you need to uninstall. Confirm the selection with “Next”.



2. Uninstall app

Use the “Remove” button to start the uninstallation.





Confirm the query with “YES”.

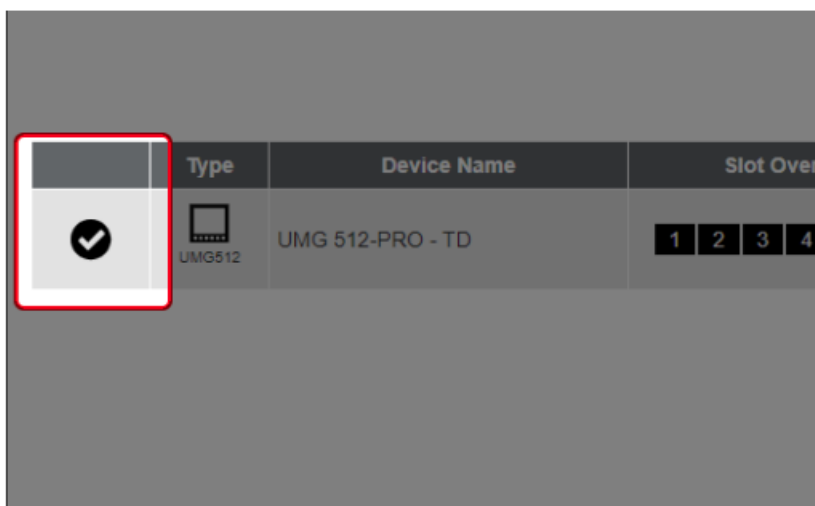
3. Progress indicator

The progress indicator shows the execution of the action throughout its entire duration.



4. Uninstallation finished

Successful uninstallation is indicated by a check mark on the device line. Use the “Done” button to close the



assistant.

Devices and apps

Updating an app

If a new version is available for an app, first remove the older app version and then install the new one.

“Overview” window

App Management

	Type	Device Name	Slot Overview	Installed Apps	Info
✓	UMG512	UMG 512-PRO - TD	1 2 3 4 5 6 7	Humidity & Multitouch	
✓	UMG508	UMG 508 - TD	1 2 3 4 5 6 7	Multitouch	

GridVis

Overview

App

Function extension

App Mana

The overview indicates the basic program information about installed apps.

Hint:

You can obtain further details about pre

tooltips (when dragging your mouse at

Hint:

Previously selected apps will not be

have pressed the install / remove button

Hint:

You can also remove apps manually, fo

not sufficient for an additional app. Sim

app icon and confirm the red 'x' above t

All previously selected devices and the relevant data are listed in the overview. You can also see which apps are installed on which device. If you move your mouse pointer over the display elements, additional information will be shown in a pop-up window.

The slot overview provides information about whether slots or storage space are still available for installing apps, or whether unused apps have to be uninstalled first. There are 7 memory slots available per device. The need for memory slots varies from app to app.

For more information on the slot overview, see the online help at wiki.janitza.de.

Janitza electronics GmbH
 Vor dem Polstück 6 | 35633 Lahnau Germany
 Tel. +49 6441 9642-0
 Fax. +49 6441 9642-30
info@janitza.de | www.janitza.de

Doc. no. 2.047.023.1.b | Dated 12/2021 | Subject to technical alterations. The latest version of the document can be found in the download area at www.janitza.de.

Documents / Resources

GridVis® App Management

Installing and managing device apps

Product description

[Janitza GridVis App Management \[pdf\] User Guide](#)

GridVis App Management, GridVis App, Management

www.janitza.de

GridVis® App Management

Installing and managing device apps

Product description

Janitza®

References

- [Dashboard - wiki.janitza.de](#)
- [Janitza – Spezialist für Energiemanagement, Universalmessgeräte & digitale Einbaumessgeräte](#)

[Manuals+](#),

- [home](#)
- [privacy](#)