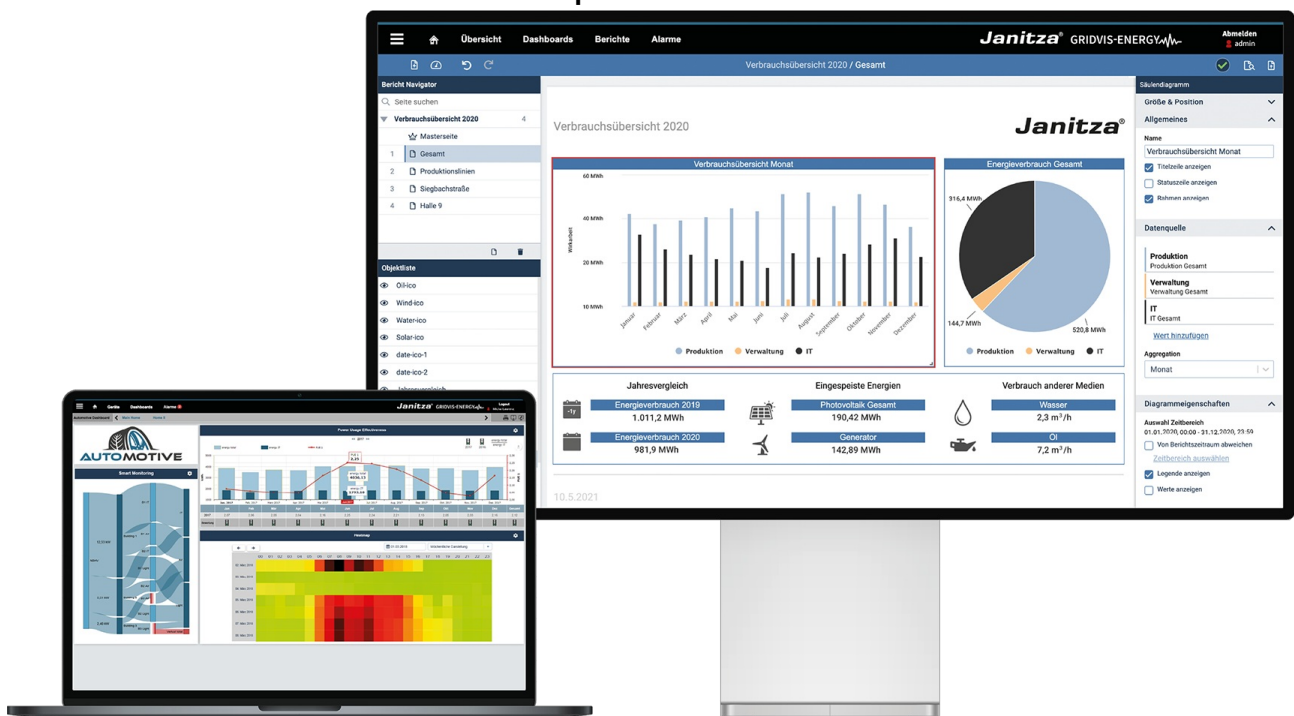




## Janitza Firmware Updates via GridVis Instructions

[Home](#) » [janitza](#) » Janitza Firmware Updates via GridVis Instructions 

### Janitza Firmware Updates via GridVis Instructions



## Contents

### 1 Working with GridVis®

#### 1.1 Create a project in GridVis®

#### 1.2 Add a device

### 2 Firmware Update via GridVis

#### 2.1 Check firmware version of a device

#### 2.2 Download the latest firmware

#### 2.3 Update process

### 3 Device configuration via GridVis®

### 4 Support

### 5 Documents / Resources

#### 5.1 References

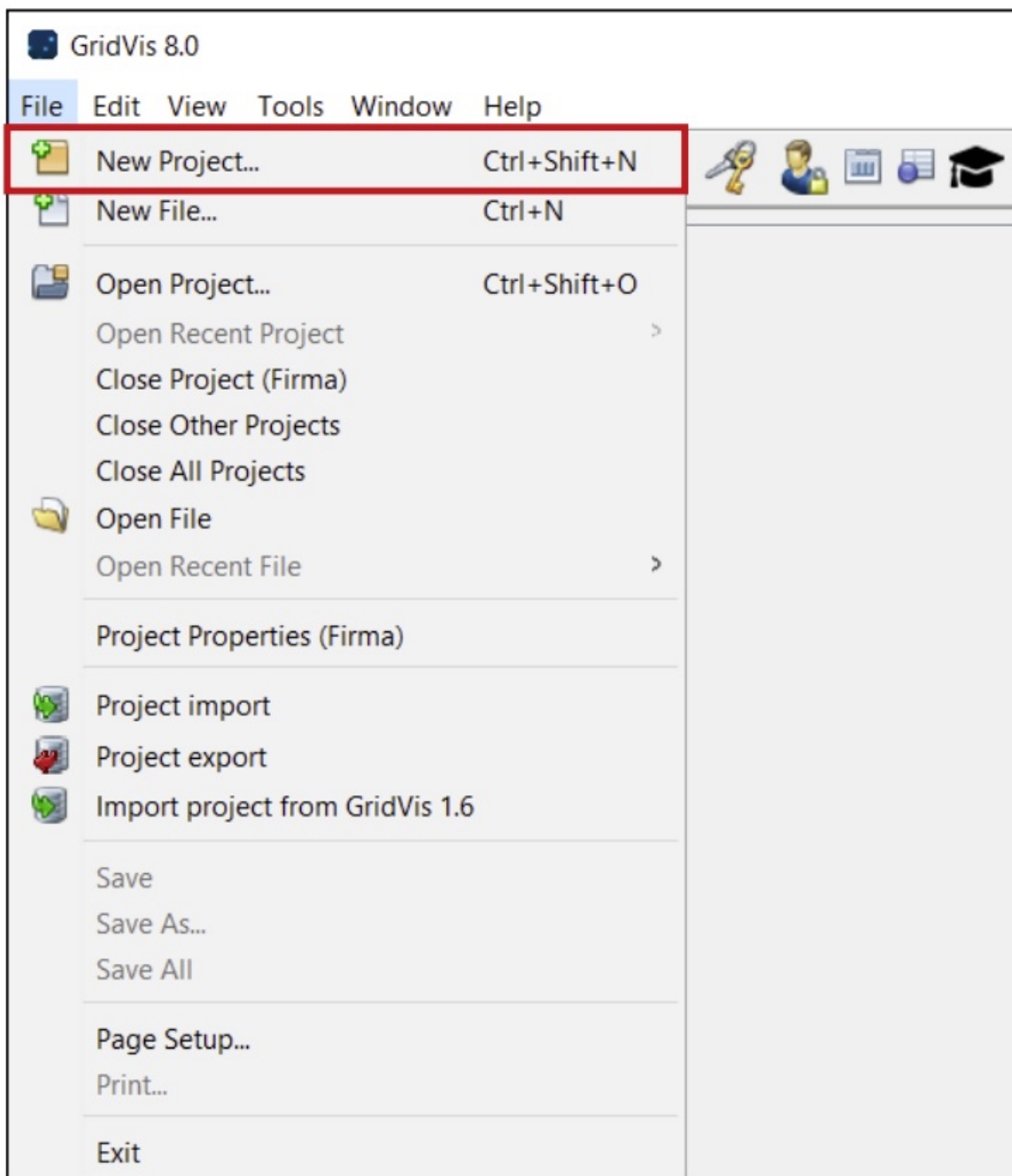
### 6 Related Posts

## Working with GridVis®

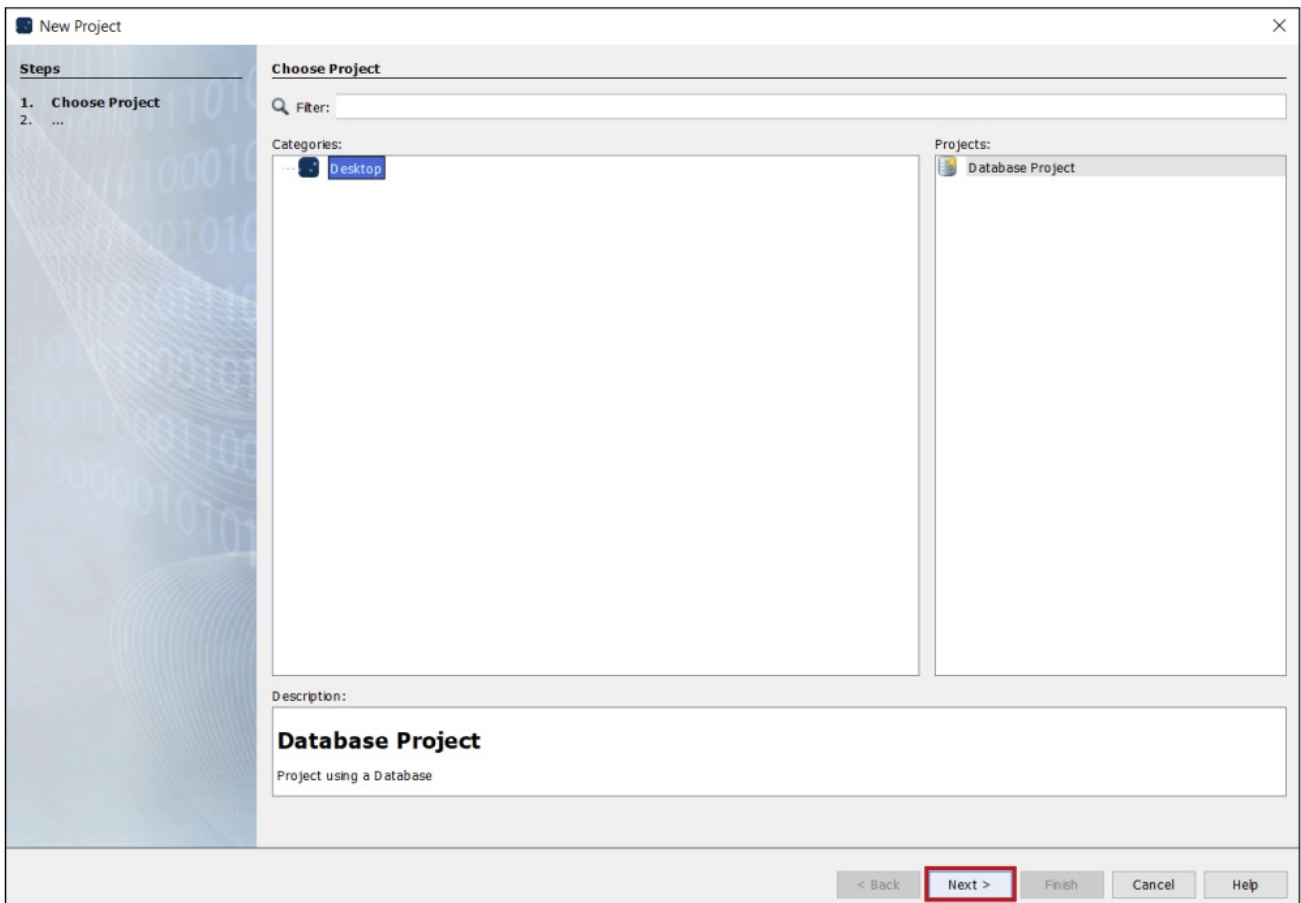
GridVis® is needed to configure Janitza devices and update their firmware.

### Create a project in GridVis®

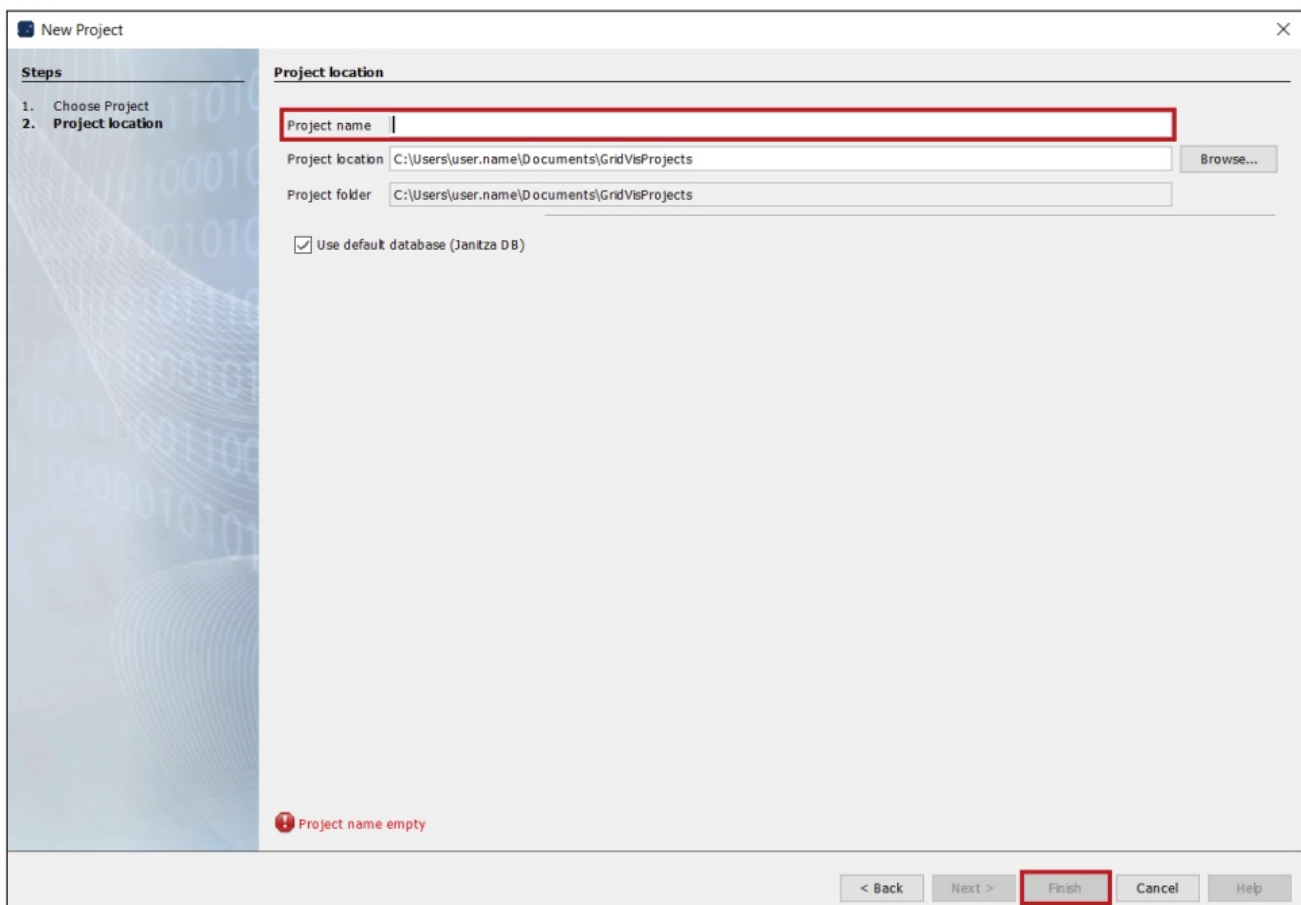
- Open the GridVis®
- Click on File in the menu bar
- Click on New Project



- Click on Next in the window

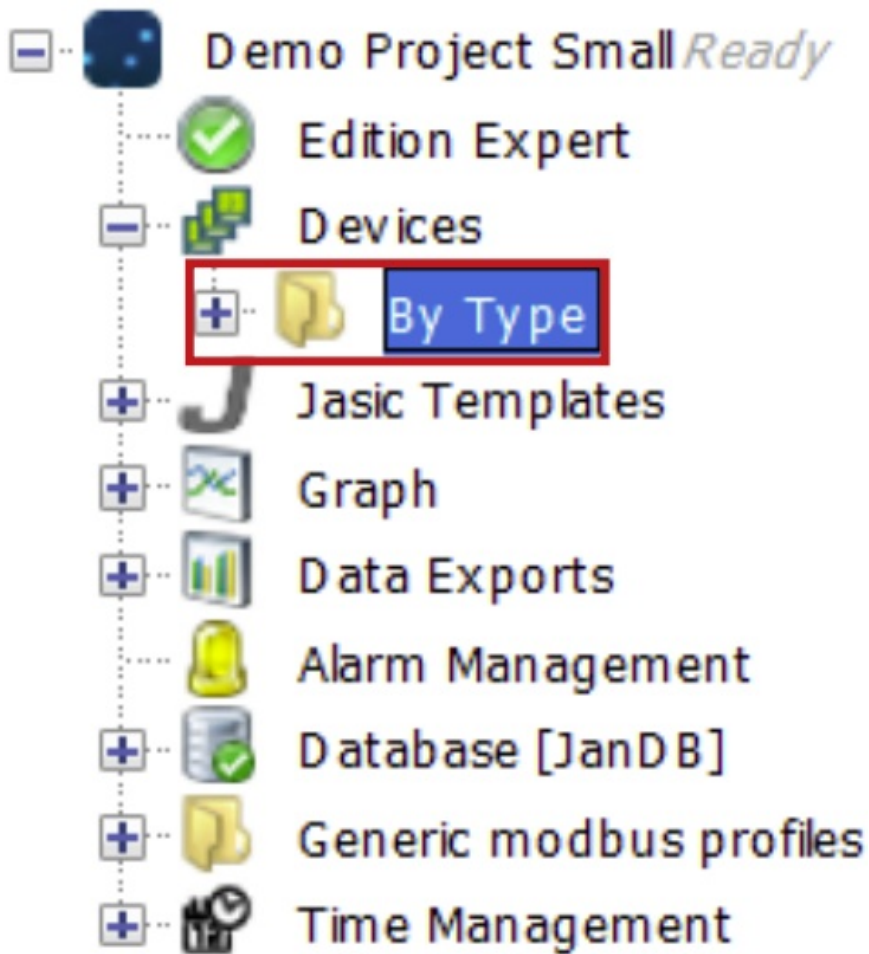


- Enter a project name
- If necessary, change the project location
- Click on Finish

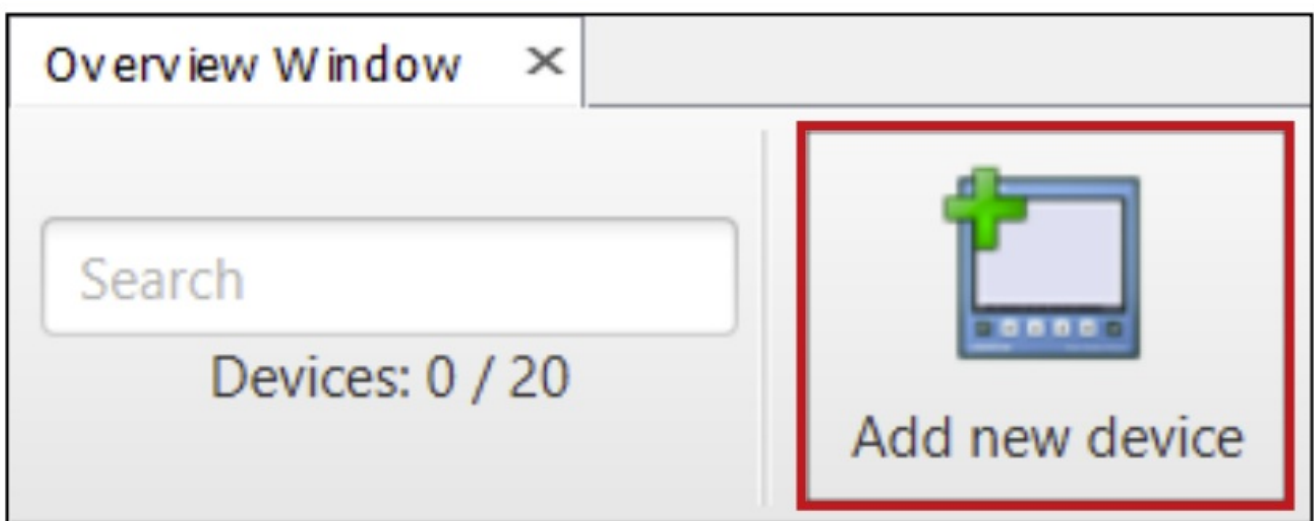


## Add a device

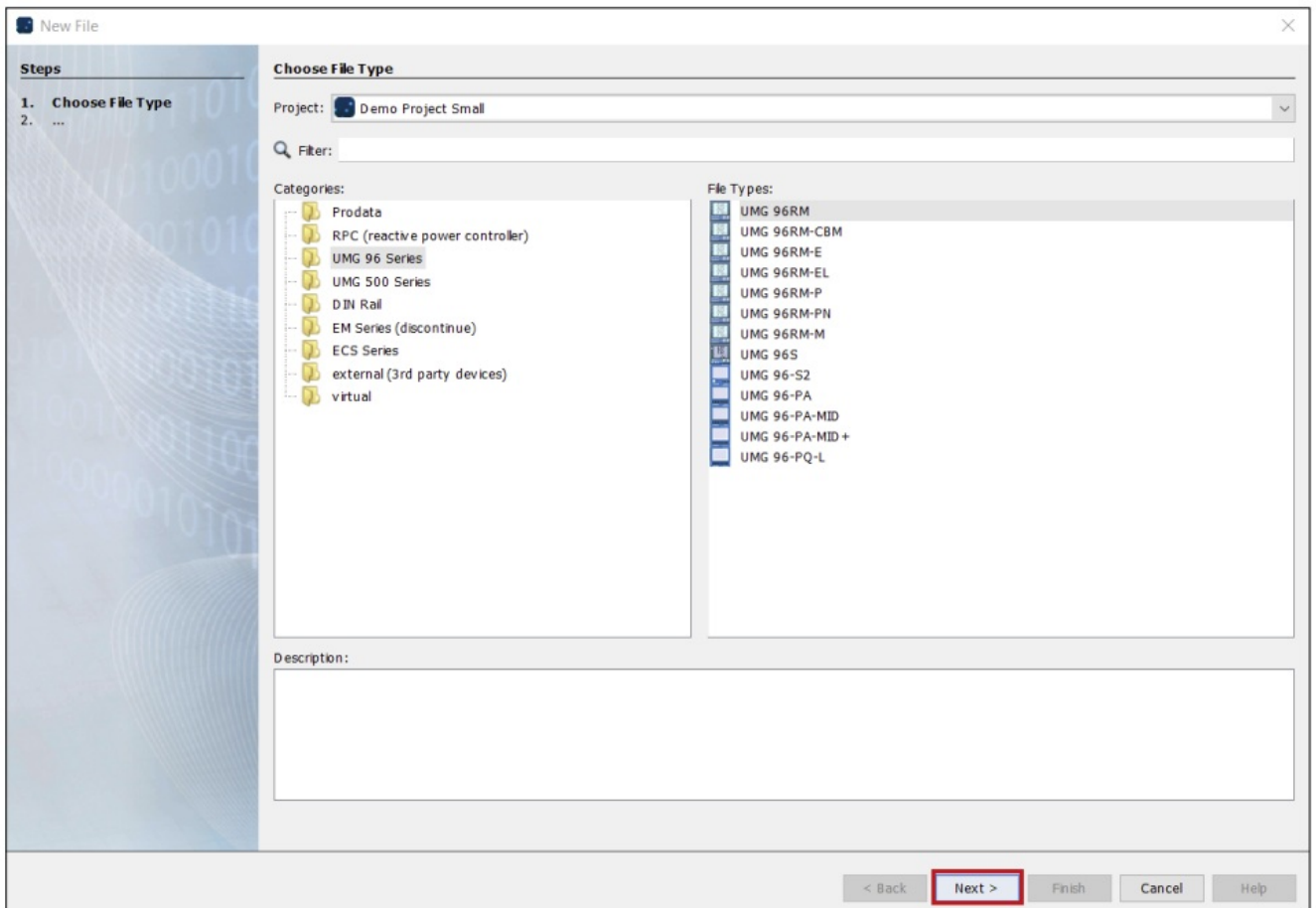
- Double click on the created project
- Expand the tree structure by clicking on the plus sign
- Double click on Devices in the tree structure
- Double click on the folder By Type



- In the Overview Window click on Add new device



- Select the device that you want to add to your project
- Use the Filter function for easy navigation
- Click on Next



- Choose the connection type (for instance TCP/IP) and fill in the IP address of the device in the field Host
- Click on Connection test. If a small window appears with the device information, the connection test was successful
- Click on Finish

**New UMG 604**

**Steps**

1. Configure connection

**Configure connection**

UMG 604 [TCP/IP]

**Common**

Type: TCP/IP

**Connection settings**

Host: 192.168.2.229

**Expert settings**

Connection test

< Back

Next >

**Finish**

Cancel

Help

## Firmware Update via GridVis

The GridVis® software can be used to update the firmware of Janitza measurement devices. It allows users to install a firmware update on multiple device series at once. When the firmware update starts, an image is created first. Then the device will restart and when the device is online again the update files will be sent.

### Check firmware version of a device

- When a device from the device tree in the project is selected, its firmware version will be displayed on the right-hand side of the screen.

Overview Window

Synchronize

Configuration

Delete device

communication settings

Connection test

Reset values

Refresh

**UMG 512**

UMG 512 - TD

Last Value: 12/13/21, 8:30:00 AM

Timeplan: Read devices (executed on server : 2)

Hardware revision: 0010

Serial number: 4200-0053

**Firmware version: 5.026 2021-10-24 10:30:00**

Connection String: TCP  
IP Address: 192.168.3.198

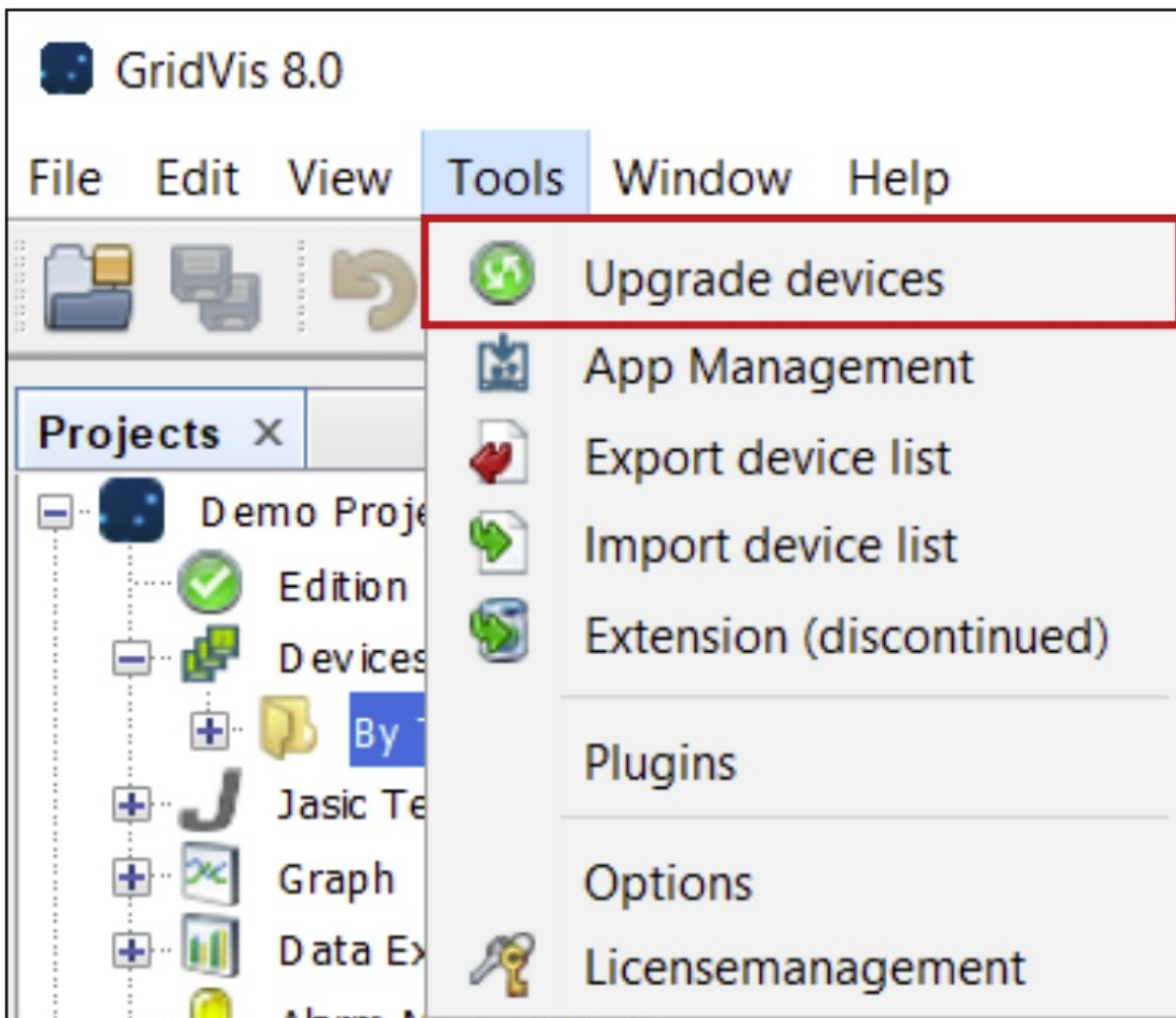
## Download the latest firmware

- The latest firmware files for all Janitza devices are available for download at  
Download the latest firmware
- The latest firmware files for all Janitza devices are available for download at  
[www.janitza.com/firmware-download.html](http://www.janitza.com/firmware-download.html)
- Save the corresponding firmware file for your device series as a .zip file in your computer.  
**Note:** Do not unpack the .zip archive. The GridVis® will process the .zip file directly
- Save the corresponding firmware file for your device series as a .zip file in your computer.  
**Note:** Do not unpack the .zip archive. The GridVis® will process the .zip file directly.

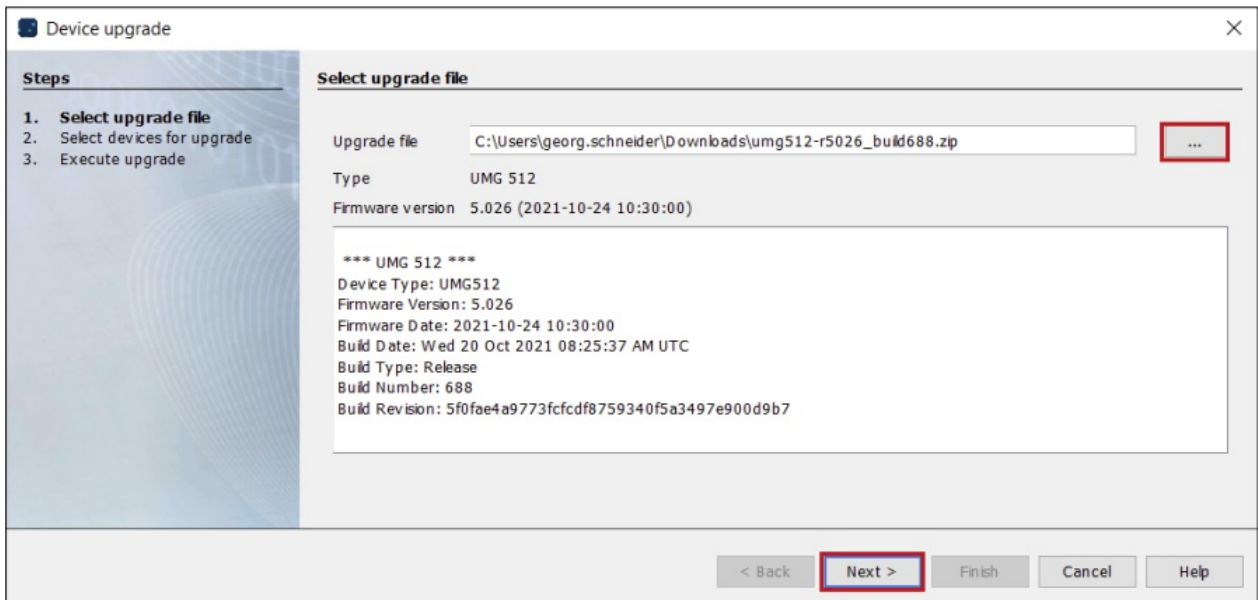
## Update process

- Open GridVis®
- Click on Tools in the menu bar
- Click on Upgrade devices. Alternatively, click the Upgrade devices icon in the toolbar.

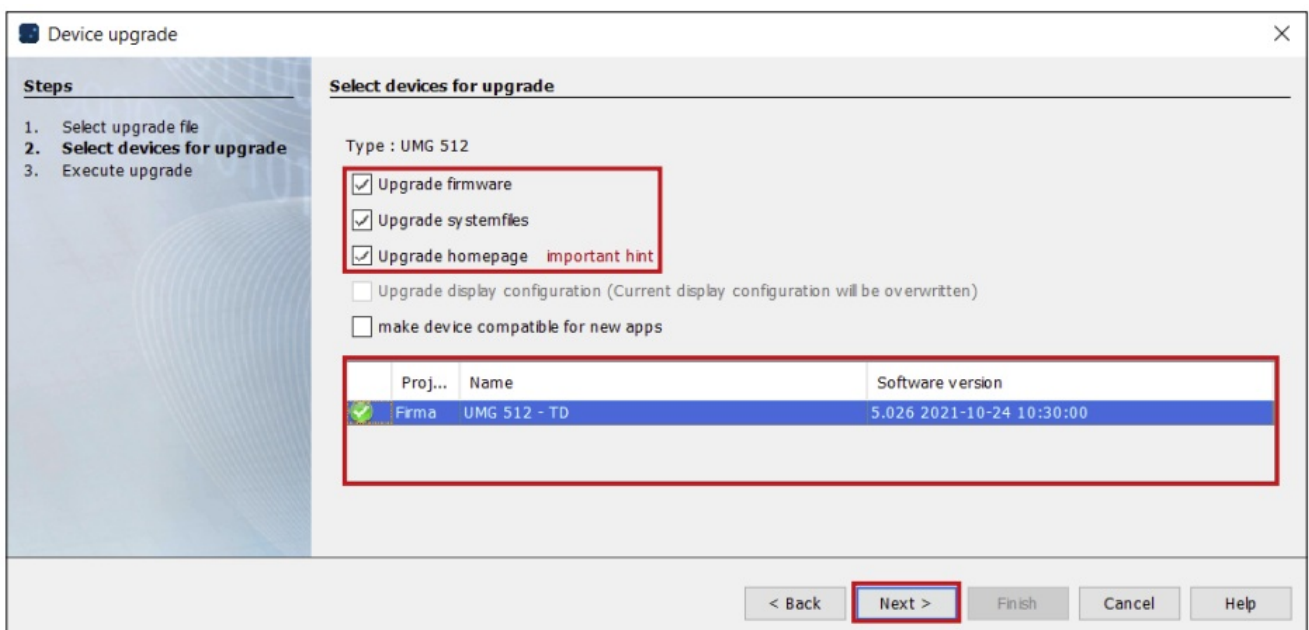
The assistant Device Upgrade appears



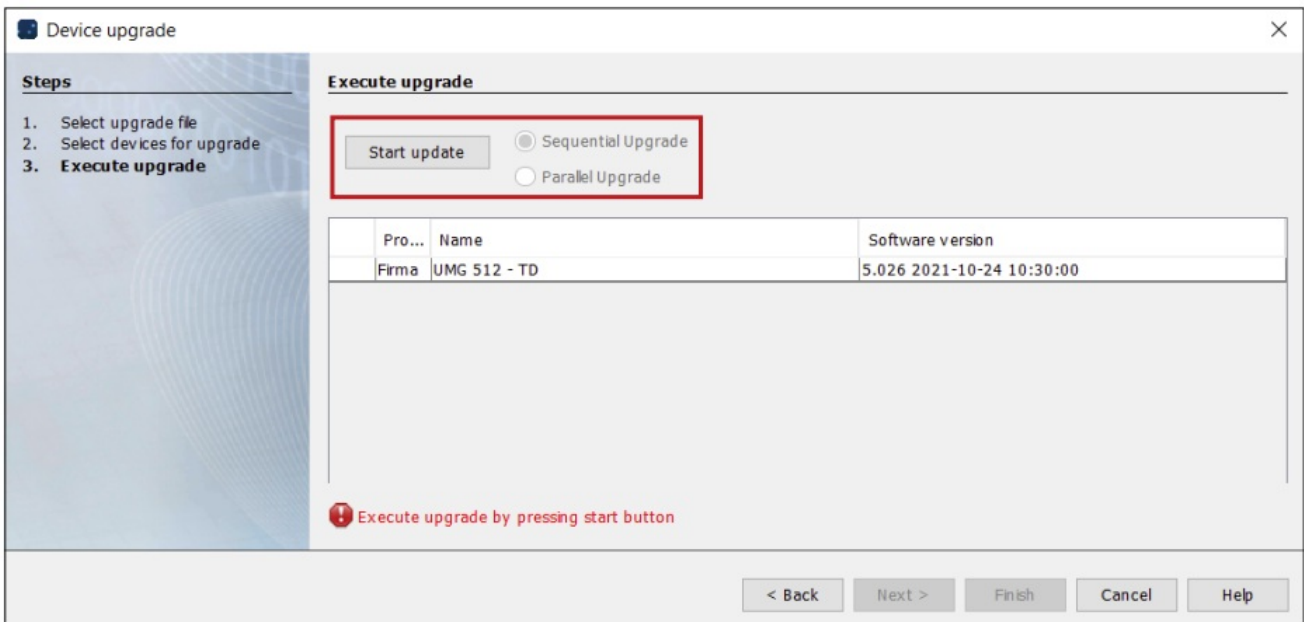
- Load the corresponding firmware .zip file by clicking on the button next to the Upgrade file field.  
The firmware file will be loaded
- Click on Next



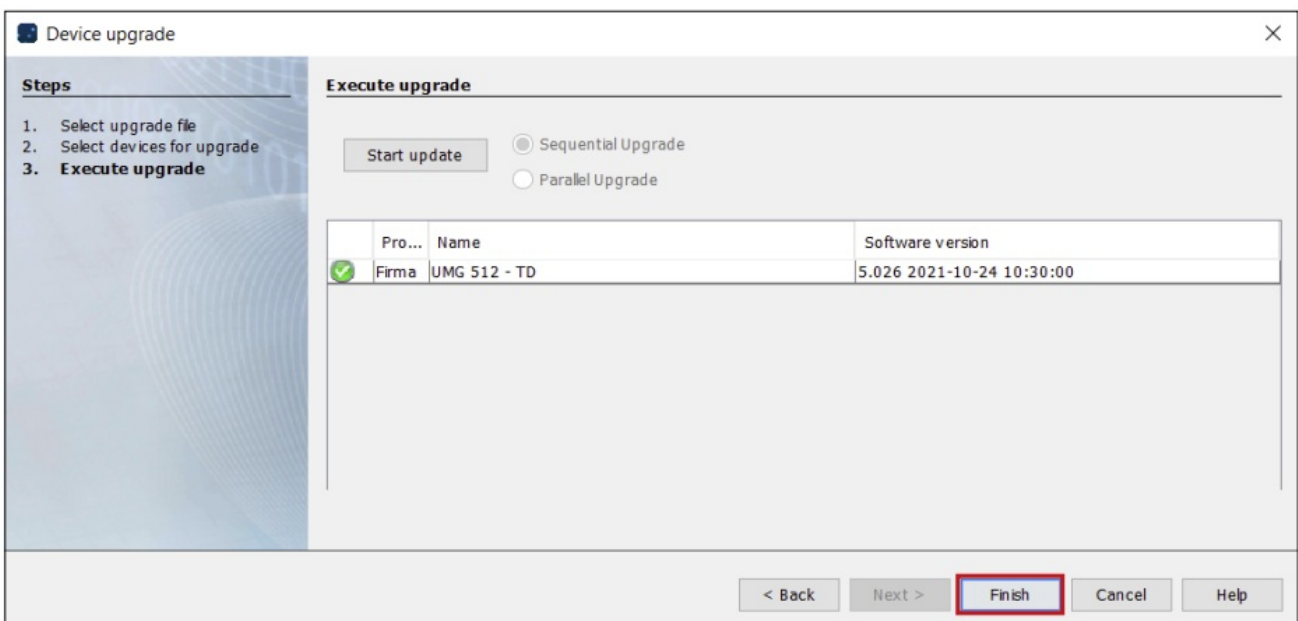
- A list of connected devices corresponding to the device type of the loaded firmware file will be shown
- Check the options for upgrading firmware, system files and homepage
- A warning may appear when checking the box for upgrading the homepage. This can be safely ignored, click Yes
- Select the device you wish to update via the left mouse button (LMB)
- Multiple devices can be selected using Ctrl + LMB or Shift + LMB
- Selected devices will be highlighted in blue
- Click Next



- For multiple devices, updates can run sequentially or in parallel. Choose Sequential Upgrade and click on Start Update



- The update process takes a few moments
- The symbol in the project line shows that the firmware update was successful.



- Click Finish to close the assistant
- The new firmware has been installed on the device(s)

## Device configuration via GridVis®

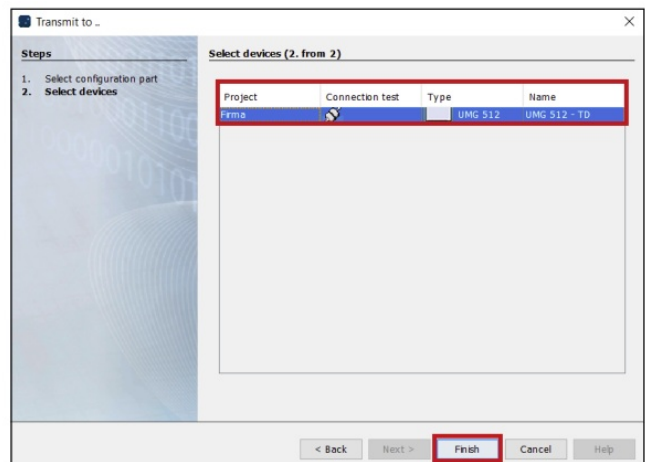
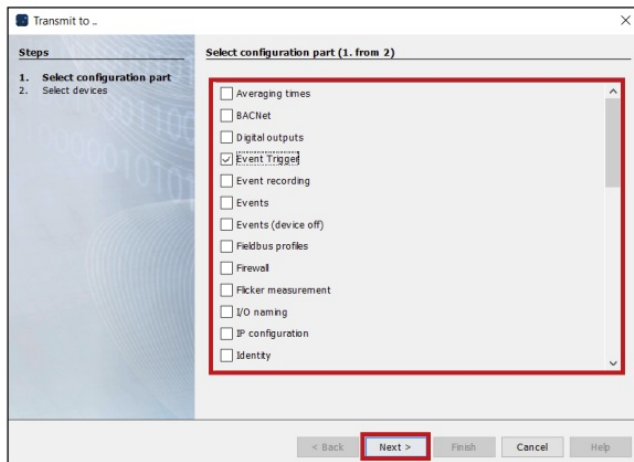
- In GridVis® it is possible to configure all device settings using a GUI
- Once a user-defined configuration has been set, it can be sent to a single device or even multiple devices using the function Transmit or Transmit to respectively
- Save to file allows exporting settings to a standard .txt file
- Load from file allows importing settings from a standard .txt file
- Any configuration settings changed in the menu or loaded from a file will only be updated on the device(s) after being explicitly transmitted.

## Transmit

- Sends all configuration settings to the single device the dialogue was started from

### Transmit to (recommended method)

- Opens an assistant window for transferring either all settings or only a few selected sub-settings to a specific device or several devices at once
- In the Transmit to assistant, select all sub-settings (for example Event trigger) to be sent and click **Next**
- Select the device(s) you wish to transmit the specific configuration to via the left mouse button (LMB). Multiple devices can be selected using Ctrl + LMB or Shift + LMB
- Selected device(s) will be highlighted in blue.




- Click Finish to send the configuration settings.

### Support

Janitza electronics GmbH  
 Vor dem Polstück 6 | 35633 Lahnau  
 Germany  
**Tel.** +49 6441 9642-0  
**Fax.** +49 6441 9642-30  
[info@janitza.de](mailto:info@janitza.de)  
[www.janitza.de](http://www.janitza.de)

# Janitza®

### Documents / Resources

	<p><a href="#">Janitza Firmware Updates via GridVis</a> [pdf] Instructions          Firmware Updates via GridVis, Firmware Updates, GridVis Firmware Updates, GridVis</p>
---	---

### References

-  [Firmware - Janitza electronics](#)
-  [Janitza – Spezialist für Energiemanagement, Universalmessgeräte & digitale Einbaumessgeräte](#)

Manuals+.