

Jandy IWCSS60W Infinite WaterColors Smart Sync LED Adapter



# Jandy IWCSS60W Infinite WaterColors Smart Sync LED Adapter Instruction Manual

[Home](#) » [Jandy](#) » Jandy IWCSS60W Infinite WaterColors Smart Sync LED Adapter Instruction Manual 

## Contents

- [1 Jandy IWCSS60W Infinite WaterColors Smart Sync LED Adapter](#)
- [2 FCC Regulatory Compliance Statement](#)
- [3 Installation](#)
- [4 iAquaLink® App Features](#)
- [5 Additional Online Content](#)
- [6 Documents / Resources](#)
  - [6.1 References](#)
- [7 Related Posts](#)



**Jandy IWCSS60W Infinite WaterColors Smart Sync LED Adapter**



**Model:** IWCSS60W

Requires Jandy AquaLink® RS (revision Y or later) and Infinite WaterColors™ 300W Light Controller (revision 2.46 or later) to operate. Essential installation and startup instructions are included in this manual. Additional operation and troubleshooting information is available online by scanning the QR code with your phone or visiting [jandy.com](http://jandy.com)



**WARNING**

**FOR YOUR SAFETY** – This product must be installed and serviced by a contractor who is licensed and qualified in pool equipment by the jurisdiction in which the product will be installed where such state or local requirements exist. The maintainer must be a professional with sufficient experience in pool equipment installation and maintenance so that all of the instructions in this manual can be followed exactly. Before installing this product, read and follow all warning notices and instructions that accompany this product. Failure to follow warning notices and instructions may result in property damage, personal injury, or death. Improper installation and/or operation may void the warranty. Improper installation and operation can create unwanted electrical hazards which may cause serious injury, property damage, or death. **DO NOT MODIFY THIS EQUIPMENT.**

**ATTENTION INSTALLER** – This manual contains important information about the installation, operation, and safe use of this product. This information should be given to the owner/operator of this equipment.

**FCC Regulatory Compliance Statement**

This device complies with Part 15 of the FCC Rules. Operation is subject to the following two conditions:

1. This device may not cause harmful interference, and
2. This device must accept any interference received, including interference that may cause undesired operation.

**CAUTION**

Changes or modifications not expressly approved by the party responsible for compliance could void the user's

authority to operate the equipment.

**NOTE:** This equipment has been tested and found to comply with the limits for a Class B digital device, pursuant to Part 15 of the FCC Rules. These limits are designed to provide reasonable protection against harmful interference in a residential installation. This equipment generates, uses, and can radiate radio frequency energy and, if not installed and used in accordance with the instructions, may cause harmful interference to radio communications. However, there is no guarantee that interference will not occur in a particular installation. If this equipment does cause harmful interference to radio or television reception which can be determined by turning the equipment off and on, the user is encouraged to try to correct the interference by one or more of the following measures:

- Reorient or relocate the receiving antenna.
- Increase the separation between the equipment and the receiver.
- Connect the equipment to an outlet on a circuit different from that to which the receiver is connected.
- Consult the dealer or an experienced radio/TV technician for help.

## **Section 1. Important Safety Instructions**

IMPORTANT SAFETY INSTRUCTIONS ABOUT A RISK OF FIRE, ELECTRIC SHOCK, OR INJURY TO PERSONS READ AND FOLLOW ALL INSTRUCTIONS

The Infinite WaterColors™ Smart Sync™ is designed to be powered and operated with the Infinite WaterColors™ Light Controller. The lights will not operate when powered from an alternate transformer. Follow all installation and operating instructions for the Infinite WaterColors™ Smart Sync™ and Light Controller (Model: IWCLC300W).

## **Specifications**

- 60W LED Driver
- Rated Max Input: 5.0A @ 14 VAC
- Rated Max Output: 4.5A @12 VDC
- Controls up to 12 feet of Brilliant Wonders™ LED Waterfalls (each waterfall requires 5 watts per foot)
- Only use 14 VAC input power from the Jandy Infinite WaterColors™ Light Controller, a listed low voltage pool/spa transformer, between pool controls and Smart Sync.
- Must be mounted in a NEMA approved weatherproof enclosure.
- Requires AquaLink® RS automation (Rev Y or later) to operate.

## **ATTENTION**

The Jandy Infinite WaterColors™ Smart Sync™ should only be used to drive Infinite WaterColors™ Smart Sync™ compatible devices. Never use in conjunction with the WaterColors LED Light Controller, LED Waterfall Colorwheel Controls, a manual switch, or an automation relay. Use of the Infinite WaterColors™ Smart Sync™ requires connection to the Infinite WaterColors™ Light Controller and AquaLink® RS automation to operate.

## **SAVE THESE INSTRUCTIONS**

## **Installation**

## **WARNING**

**RISK OF ELECTRIC SHOCK WHICH CAN RESULT IN SERIOUS INJURY OR DEATH:** Before attempting to install or service, ensure that all power to the circuit supplying power to the system is disconnected or turned off at

the circuit breaker. All wiring must be done in accordance with the National Electrical Code® (NEC®), NFPA70®. In Canada, the Canadian Electrical Code (CEC), CSA C22.1, must be followed. All applicable local installation codes and regulations must be followed.

### Mount the Smart Sync LED Adapter

1. Mount the Smart Sync LED Adapter in a NEMA-approved weatherproof enclosure using the included mounting screws, as shown in Figure 2. Enclosure is not included.
2. Minimum Enclosure Size (Internal): 9" x 3" x 4" (228 mm x 100 mm x 75 mm)

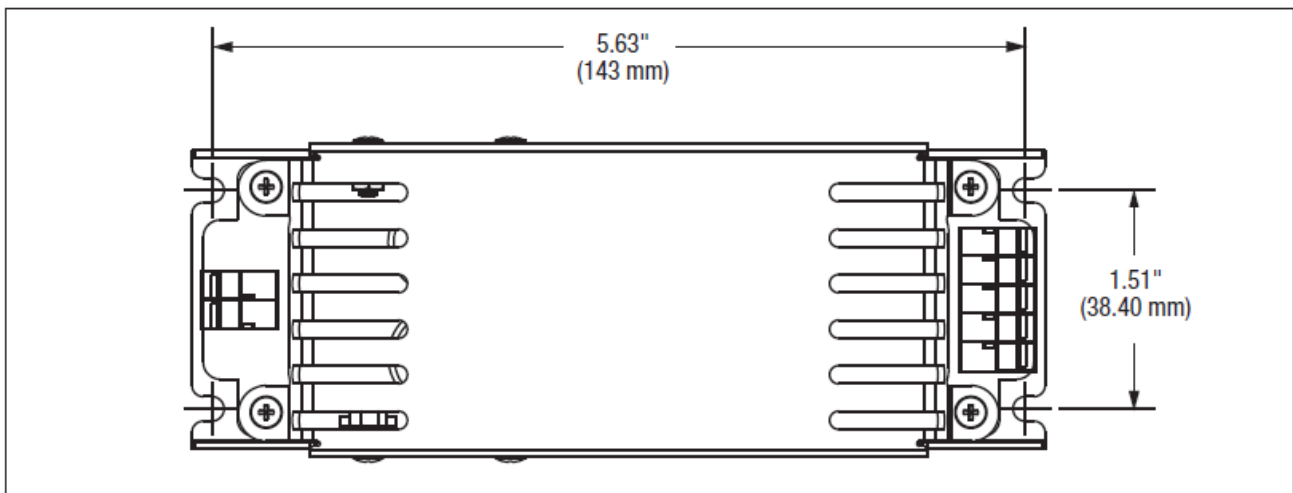


Figure 1. Smart Sync LED Adapter Dimensions

### Attach Wiring

#### Wiring Steps

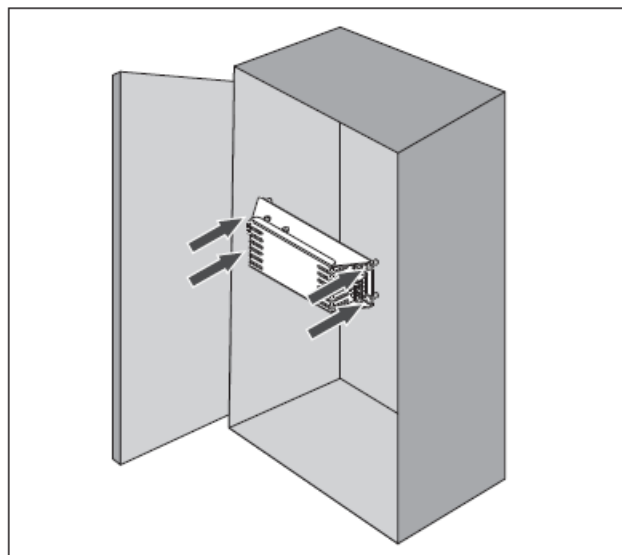


Figure 2. NEMA Approved Weatherproof Enclosure

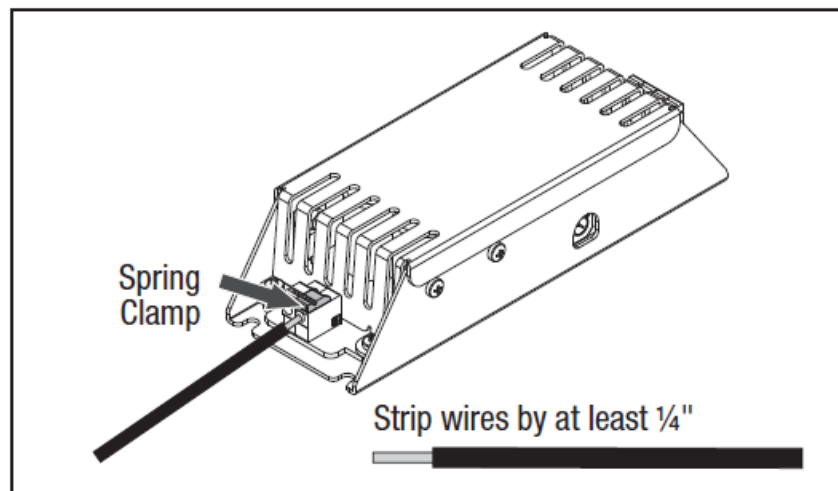
### CAUTION

The Infinite WaterColors™ Smart Sync LED Adapter must be powered by the listed low voltage pool/spa transformer Jandy Infinite WaterColors™ Light Controller. Connect the low-voltage transformer between the pool control system and the Smart Sync LED Adapter.

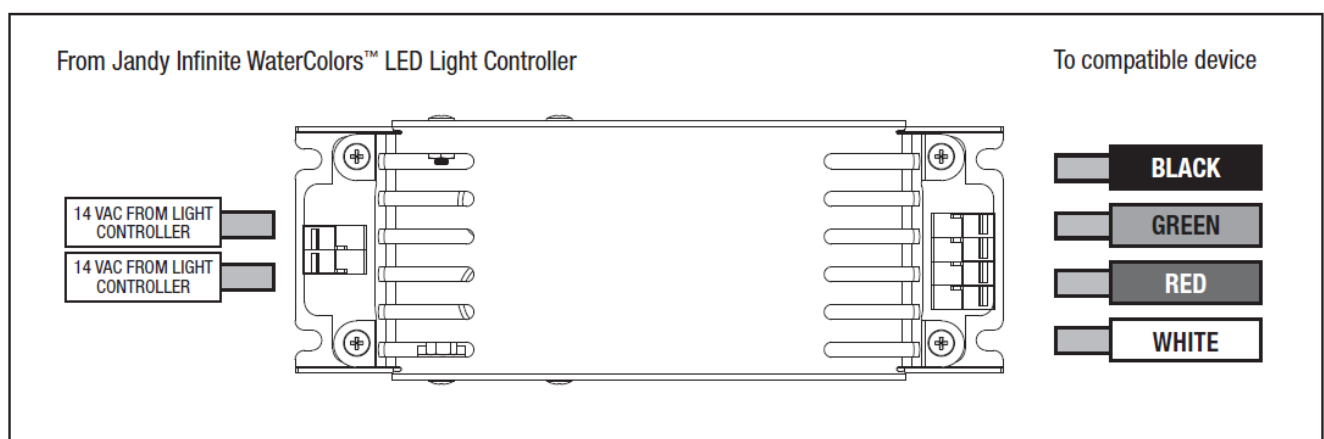
1. Wire to the Infinite WaterColors™ Smart Sync compatible device. Strip the four RGB or five RGBW wires by at

least ¼". (Compatible with both solid and stranded wire 24–14 AWG.)

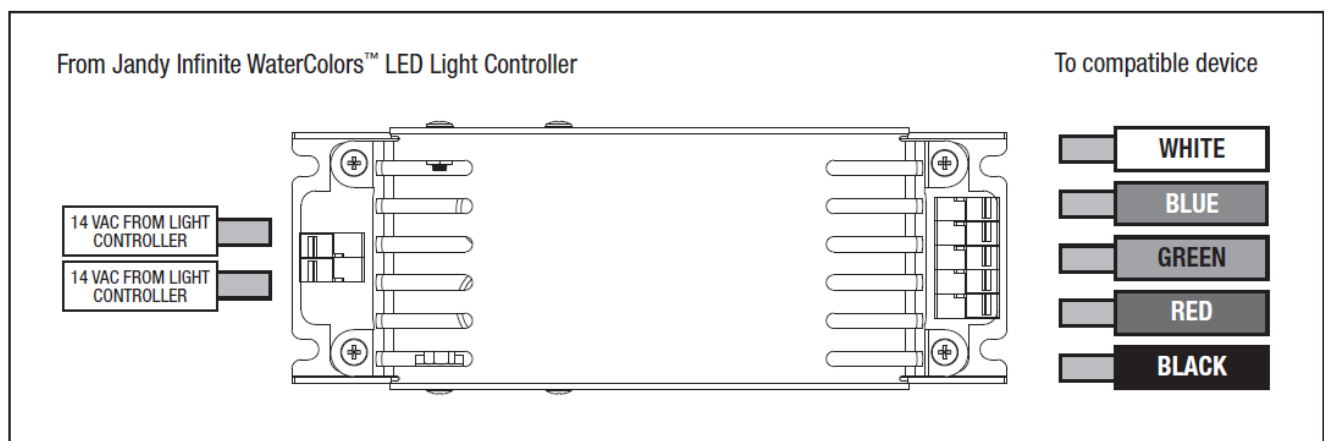
2. Attach each of the four or five wires to the Smart Sync LED Adapter by pushing back an orange spring clamp and inserting the correct wire below. If needed, push back the orange spring clamps to release wires. See Figure 3 for wire stripping and insertion, Figure 4 for RGB wiring, and Figure 5 for RGBW wiring.
3. Repeat steps 1 and 2 to connect wiring from the Jandy Infinite WaterColors™ LED Light Controller. See Figure 6.



**Figure 3. Wire Stripping and Insertion**



**Figure 4. RGB Wiring**



**Figure 5. RGBW Wiring**

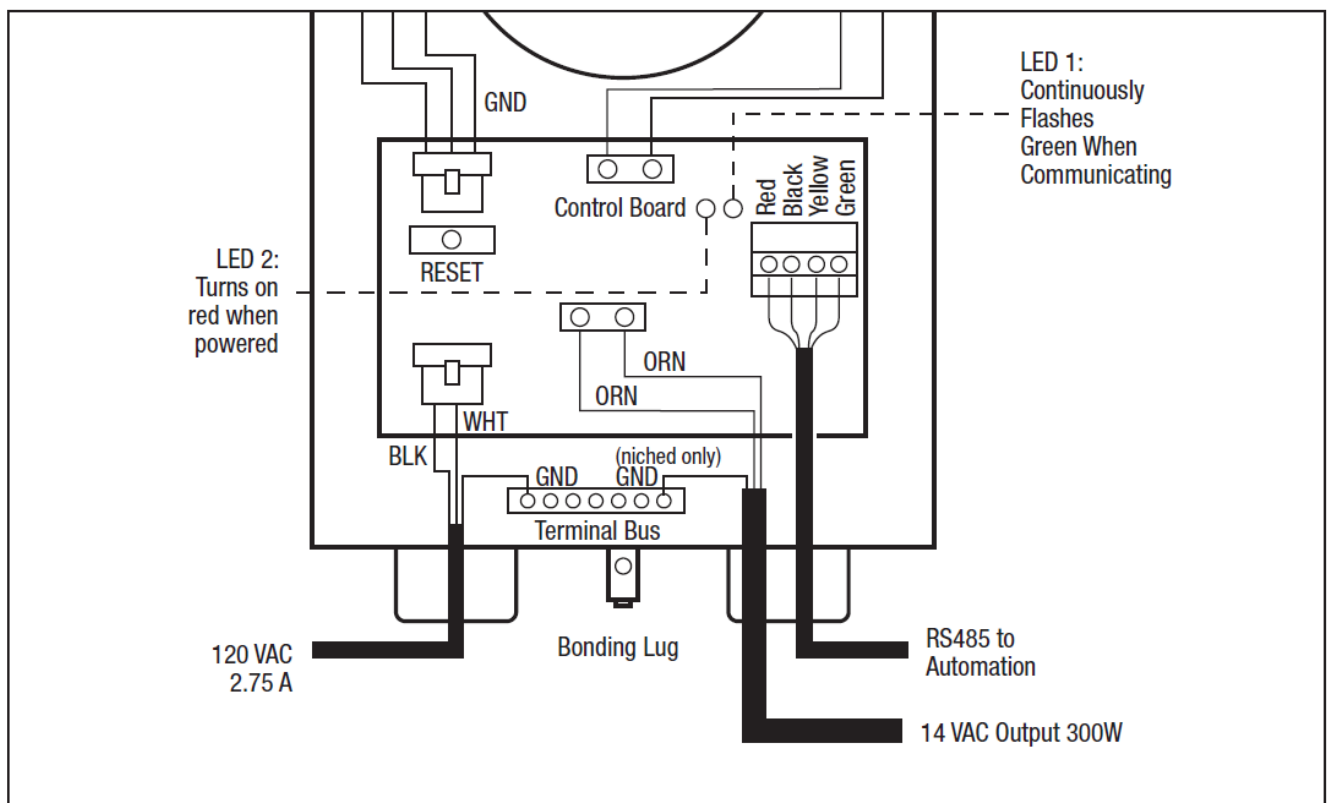
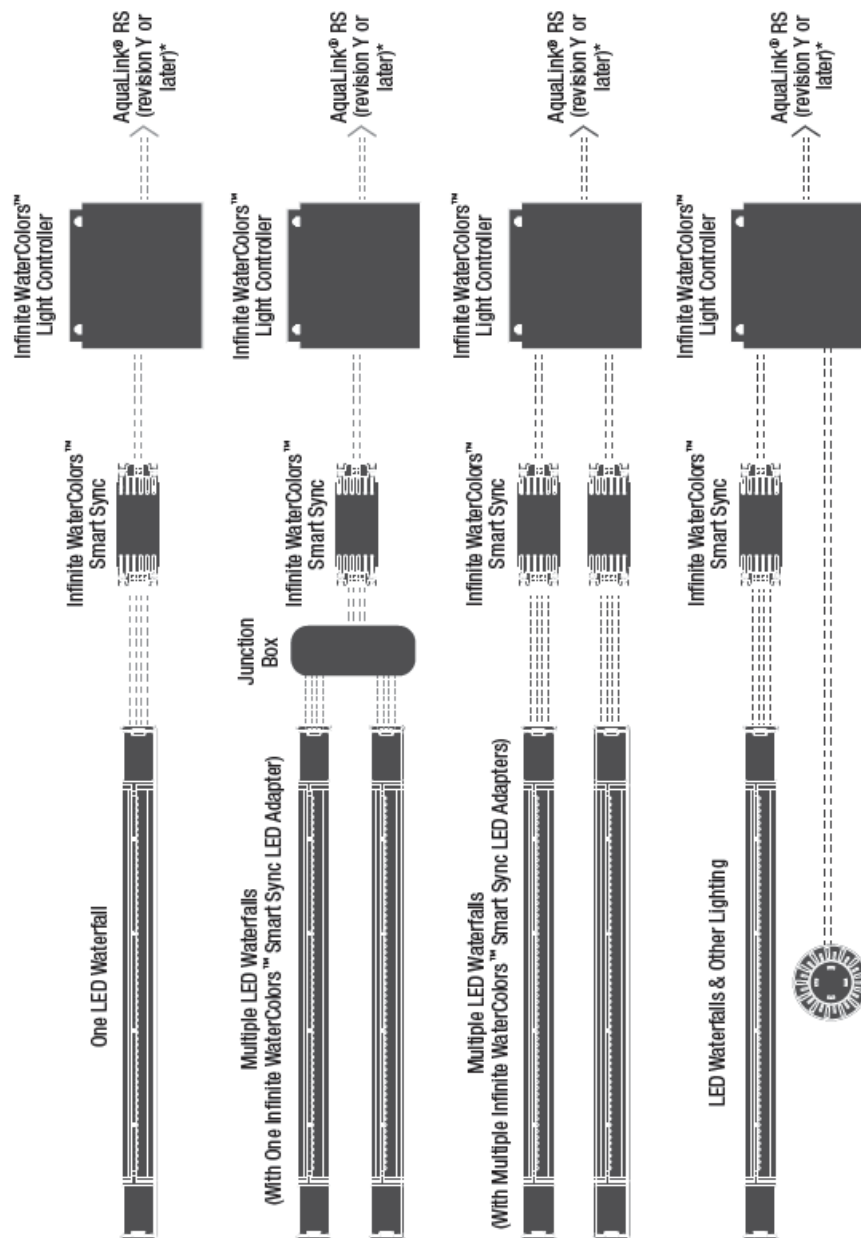


Figure 6. Jandy Infinite WaterColors Wiring Diagram

## System Wiring Examples



\*See wiring flow in the Jandy Infinite WaterColors™ LED Lighting System Overview (H0808900).

## iAquaLink® App Features

Download the iAquaLink app and/or upgrade to the latest version prior to light and zone set up. App function and design is subject to change.

### Light Setup

1. Open the app on your device.
2. From My Systems page, select your pool.
3. From the home page, choose the cog system icon on the top right and select System Setup.

### Assign Lights

1. From the System Setup page, select Light Setup and Assign Lights.
2. From the Assign Lights pop up, choose proceed to continue the process.
3. On the Light the Zone Setup page, select a light in order to move it to a different zone and follow further

instructions in the app.

**NOTE:** All devices driven by a single Smart Sync will automatically be controlled together, and cannot be separately zoned. To zone and control them separately, additional Smart Syncs are required. When exiting the Light Zone Setup page, the lights will turn off. Lights have to be assigned to a zone in order to rename the zone.

### **Name Light Zones**

1. Go to > System Setup > Light Setup > Zone Name.
2. From the Edit Zone Name pop up, enter the zone name and choose OK.

### **Turn Lights On/Off**

1. Open the app on your device.
2. From the My System page, select your pool.
3. Choose the equipment page.
4. Turn zone lights on/off by tapping the toggle to the right of the desired zone.

### **Select Colors**

1. Open the app on your device
2. From the My System page, select your pool.

### **Select Custom Color**

1. Go to > equipment page.
2. From the equipment page, choose the zone you want to change color.
3. From that zones page, choose Custom Color.
4. Choose your custom color from the color wheel.
5. Choose Apply to apply the custom color to your zone.

### **Preset Colors**

1. Go to > equipment page and select the zone you want to change color.
2. After selecting the zone, then choose from the list of preset colors to apply that preset color to your zone.

### **Preset Color Shows**

1. Go to > equipment page.
2. From the equipment page, choose the zone you want to change color.
3. After selecting the zone, then choose from the list of preset color shows to apply that preset color show to your zone.

### **Adjust Brightness**

1. From the equipment page, select the sun icon on the zone where you want to change to adjust the brightness.
2. Move the slider bar up or down with your finger and then click apply to change the brightness.

## Additional Online Content

For information on the following, please refer to the online manual:

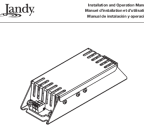
- OneTouch Setup
- Amazon Alexa Light Control
- Troubleshooting

A Fluidra Brand | [Jandy.com](https://www.jandy.com) | Jandy.ca 2882 Whiptail Loop # 100, Carlsbad, CA 92010, USA | 1.800.822.7933 2-3365 Mainway, Burlington, ON L7M 1A6, Canada | 1.800.822.7933

- 2024 Fluidra. All rights reserved. The trademarks and trade names used herein are the property of their respective owners.

---

## Documents / Resources

 <p><b>Jandy IWCSS60W Infinite WaterColors Smart Sync LED Adapter</b></p> <p>Model: IWCSS60W</p> <p>Smart Sync LED Adapter, Infinite WaterColors Smart Sync LED Adapter, WaterColors Smart Sync LED Adapter, Smart Sync LED Adapter, Sync LED Adapter, LED Adapter, Adapter</p>	<p><a href="#">Jandy IWCSS60W Infinite WaterColors Smart Sync LED Adapter</a> [pdf] Instruction Manual IWCSS60W Infinite WaterColors Smart Sync LED Adapter, Infinite WaterColors Smart Sync LED Adapter, WaterColors Smart Sync LED Adapter, Smart Sync LED Adapter, Sync LED Adapter, LED Adapter, Adapter</p>
--	--

## References

- [User Manual](#)

[Manuals+](#), [Privacy Policy](#)

This website is an independent publication and is neither affiliated with nor endorsed by any of the trademark owners. The "Bluetooth®" word mark and logos are registered trademarks owned by Bluetooth SIG, Inc. The "Wi-Fi®" word mark and logos are registered trademarks owned by the Wi-Fi Alliance. Any use of these marks on this website does not imply any affiliation with or endorsement.