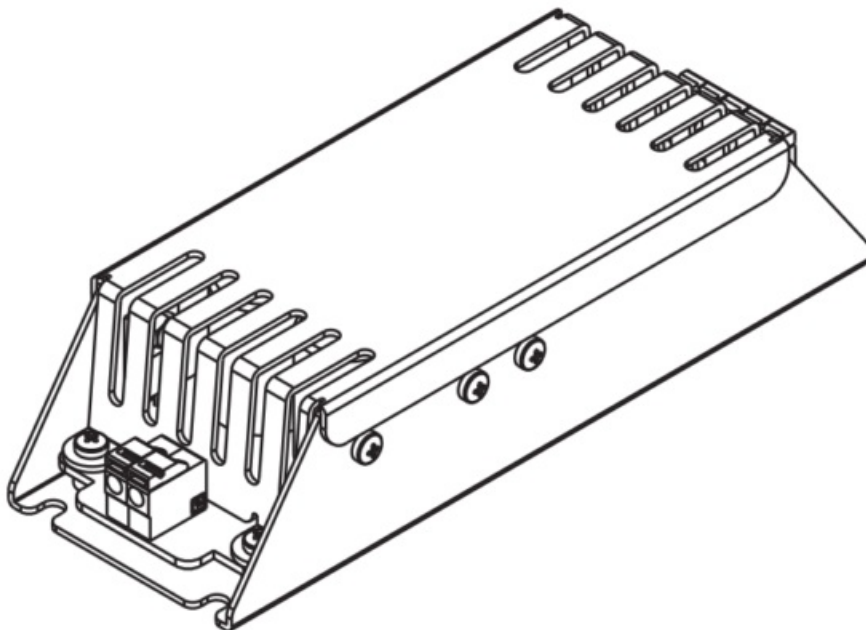




Jandy IWCSS60W Infinite Water Colors Smart Sync LED Adapter Installation Guide

[Home](#) » [Jandy](#) » Jandy IWCSS60W Infinite Water Colors Smart Sync LED Adapter Installation Guide 

Jandy IWCSS60W Infinite Water Colors Smart Sync LED Adapter



Contents

- 1 Important Information
- 2 Section 1. Important Safety Instructions
- 3 Section 2. Installation
 - 3.1 Attach Wiring
 - 3.2 System Wiring Examples
- 4 Section 3. iAquaLink® App Features
 - 4.1 Light Setup
 - 4.2 Adjust Brightness
- 5 Section 4. Additional Online Content
- 6 FCC Regulatory Compliance Statement
- 7 Customer Support
- 8 Documents / Resources
 - 8.1 References
- 9 Related Posts

Important Information

Requires Jandy AquaLink® RS (revision Y or later) and Infinite WaterColors™ 300W Light Controller (revision 2.46 or later) to operate

Essential installation and startup instructions are included in this manual. Additional operation and troubleshooting information is available online by scanning the QR code with your phone or visiting jandy.com



WARNING

FOR YOUR SAFETY – This product must be installed and serviced by a contractor who is licensed and qualified in pool equipment by the jurisdiction in which the product will be installed where such state or local requirements exist. The maintainer must be a professional with sufficient experience in pool equipment installation and maintenance so that all of the instructions in this manual can be followed exactly. Before installing this product, read and follow all warning notices and instructions that accompany this product. Failure to follow warning notices and instructions may result in property damage, personal injury, or death. Improper installation and/or operation may void the warranty. Improper installation and/or operation can create unwanted electrical hazard which may cause serious injury, property damage, or death. **DO NOT MODIFY THIS EQUIPMENT.**



ATTENTION INSTALLER – This manual contains important information about the installation, operation and safe use of this product. This information should be given to the owner/operator of this equipment.

Section 1. Important Safety Instructions

IMPORTANT SAFETY INSTRUCTIONS PERTAINING TO A RISK OF FIRE, ELECTRIC SHOCK, OR INJURY TO PERSONS

READ AND FOLLOW ALL INSTRUCTIONS

The Infinite WaterColors™ Smart Sync™ is designed to be powered and operated with the Infinite WaterColors™ Light Controller. The lights will not operate when powered from an alternate transformer. Follow all installation and operating instructions for the Infinite WaterColors™ Smart Sync™ and Light Controller (Model: IWCLC300W).

Specifications:

- 60W LED Driver
- Rated Max Input: 5.0A @ 14 VAC
- Rated Max Output: 4.5A @12 VDC
- Controls up to 12 feet of Brilliant Wonders™ LED Waterfalls (each waterfall requires 5 watts per foot)
- Only use 14 VAC input power from the Jandy Infinite WaterColors™ Light Controller, a listed low voltage pool/spa transformer, between pool controls and Smart Sync.
- Must be mounted in a NEMA approved weatherproof enclosure.
- Requires AquaLink® RS automation (Rev Y or later) to operate.

ATTENTION

The Jandy Infinite WaterColors™ Smart Sync™ should only be used to drive Infinite WaterColors™ Smart Sync™ compatible devices. Never use in conjunction with the WaterColors LED Light Controller, LED Waterfall Color wheel Controls, a manual switch, or an automation relay. Use of the Infinite WaterColors™ Smart Sync™ requires connection to the Infinite WaterColors™ Light Controller and AquaLink® RS automation to operate.

SAVE THESE INSTRUCTIONS

Section 2. Installation



WARNING

RISK OF ELECTRIC SHOCK WHICH CAN RESULT IN SERIOUS INJURY OR DEATH:

Before attempting to install or service, ensure that all power to the circuit supplying power to the system is disconnected or turned off at the circuit breaker. All wiring must be done in accordance with the National Electrical Code® (NEC®), NFPA70®. In Canada, the Canadian Electrical Code (CEC), CSA C22.1, must be followed. All applicable local installation codes and regulations must be followed.

Mount the Smart Sync LED Adapter

1. Mount the Smart Sync LED Adapter in a NEMA approved weatherproof enclosure using the included mounting screws, as shown in Figure 2. Enclosure is not included.

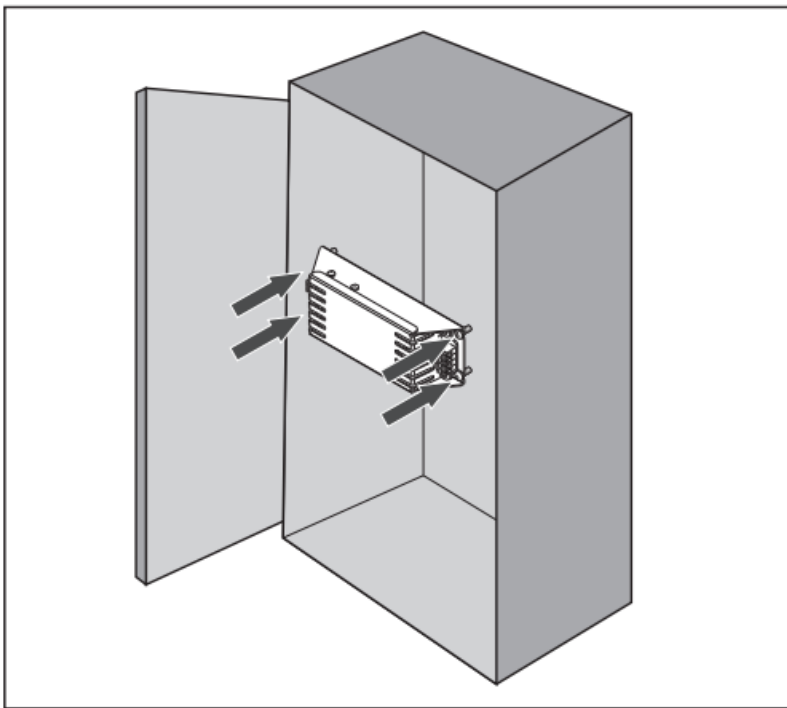


Figure 2. NEMA Approved Weatherproof Enclosure

2. Minimum Enclosure Size (Internal): 9" x 3" x 4" (228 mm x 100 mm x 75 mm)

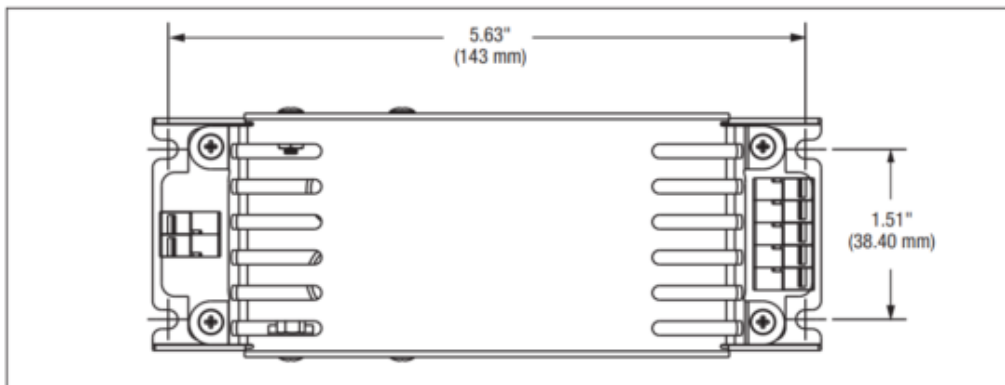


Figure 1. Smart Sync LED Adapter Dimensions

Attach Wiring

Wiring Steps



CAUTION

The Infinite WaterColors™ Smart Sync LED Adapter must be powered by the listed low voltage pool/spa transformer Jandy Infinite WaterColors™ Light Controller. Connect the low voltage transformer between pool control system and Smart Sync LED Adapter.

1. Wire to the Infinite WaterColors™ Smart Sync compatible device. Strip the four RGB or five RGBW wires by at least ¼". (Compatible with both solid and stranded wire 24–14 AWG.)
2. Attach each of the four or five wires to the Smart Sync LED Adapter by pushing back an orange spring clamp and inserting the correct wire below.

If needed, push back the orange spring clamps to release wires. See Figure 3 for wire stripping and insertion, Figure 4 for RGB wiring, and Figure 5 for RGBW wiring.

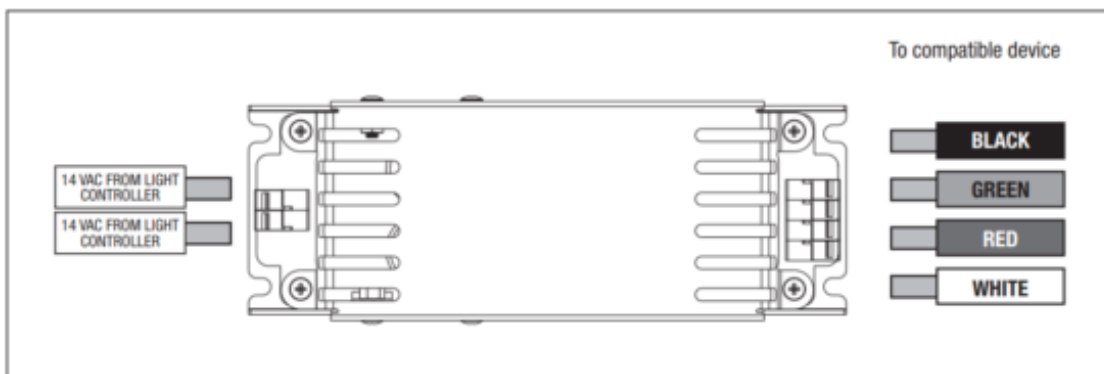


Figure 4. RGB Wiring

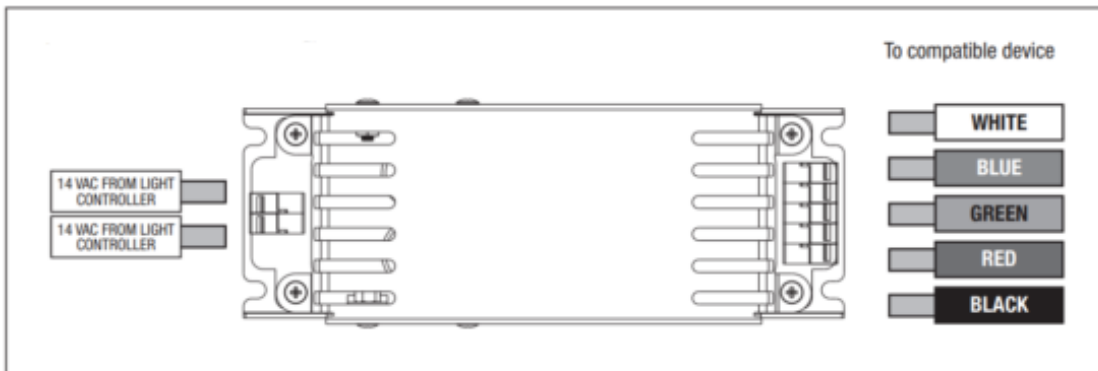


Figure 5. RGBW Wiring

3. Repeat steps 1 and 2 to connect wiring from the Jandy Infinite WaterColors™ LED Light Controller. See Figure 6.

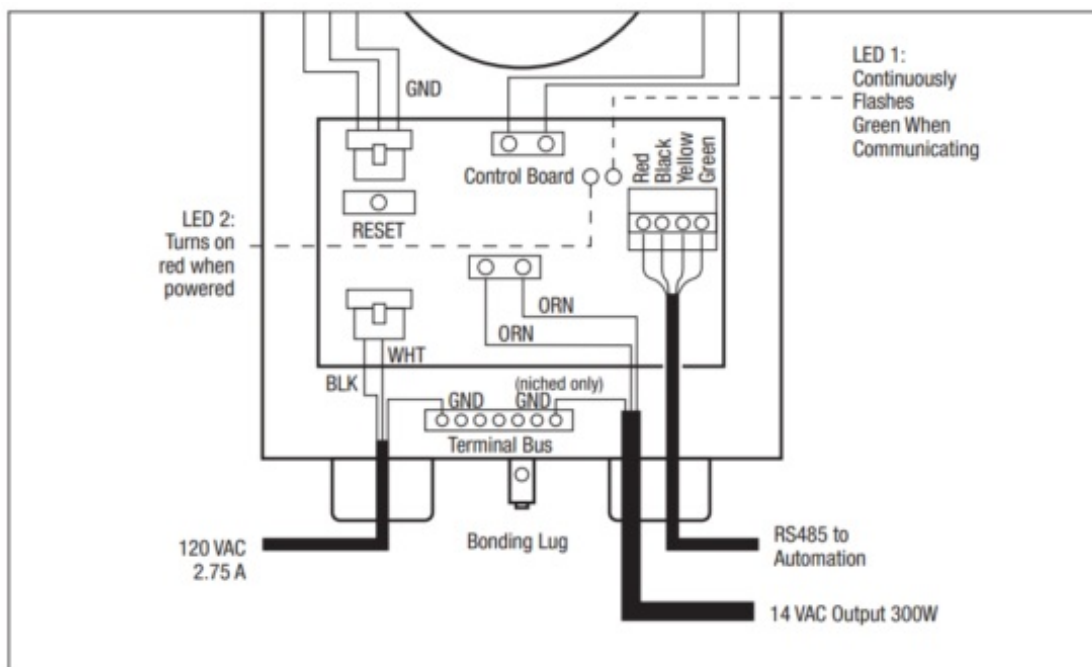
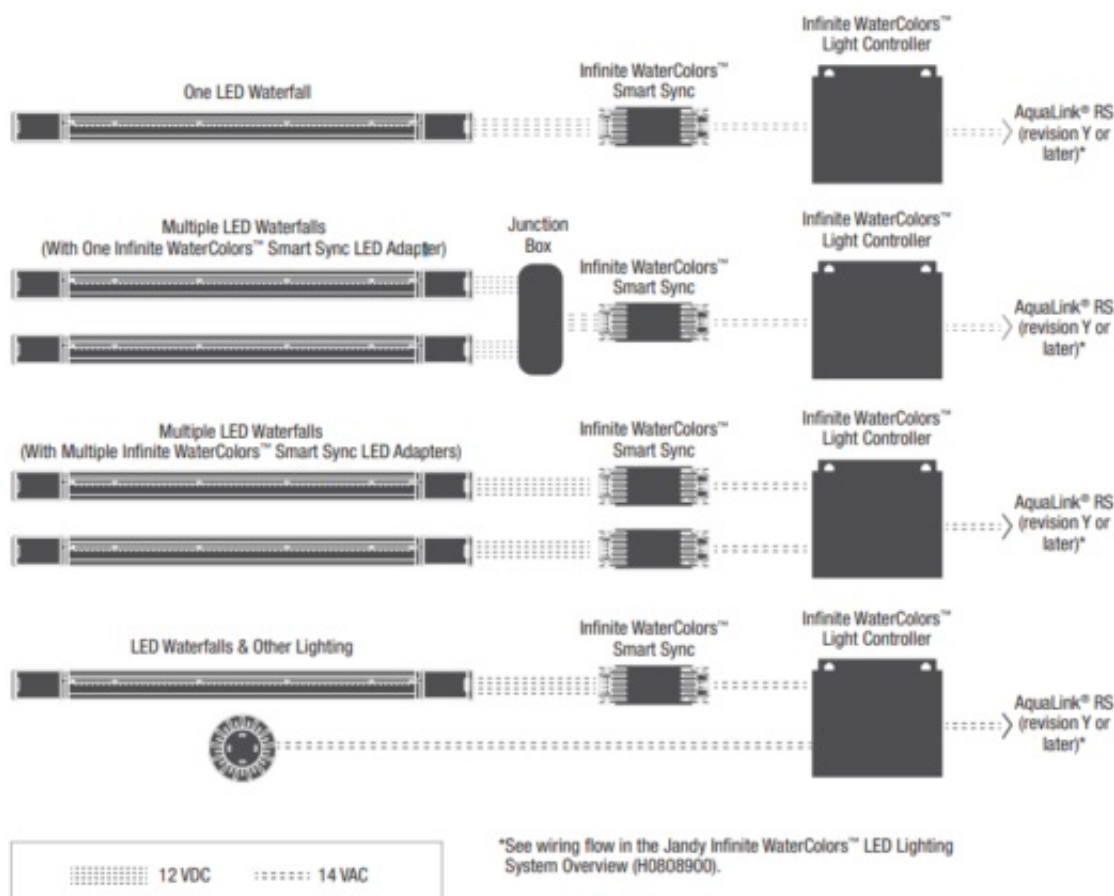


Figure 6. Jandy Infinite WaterColors Wiring Diagram

System Wiring Examples



Section 3. iAquaLink® App Features

Download the iAquaLink app and/or upgrade to the latest version prior to light and zone set up. App function and design is subject to change.

Light Setup

1. Open the app on your device.
2. From My Systems page, select your pool.
3. From the home page, choose the cog system icon on the top right and select System Setup.

Assign Lights

1. From the System Setup page, select Light Setup and Assign Lights.
2. From the Assign Lights pop up, choose proceed to continue the process.
3. On the Light the Zone Setup page, select a light in order to move it to a different zone and follow further instructions in the app.

NOTE: All devices driven by a single Smart Sync will automatically be controlled together, and cannot be separately zoned. To zone and control them separately, additional Smart Syncs are required. When exiting the Light Zone Setup page, the lights will turn off. Lights have to be assigned to a zone in order to rename the zone.

Name Light Zones

1. Go to > System Setup > Light Setup > Zone Name.
2. From the Edit Zone Name pop up, enter the zone name and choose OK.

Turn Lights On/Off

1. Open the app on your device.
2. From the My System page, select your pool.
3. Choose the equipment page.
4. Turn zone lights on/off by tapping the toggle to the right of the desired zone.

Select Colors

1. Open the app on your device
2. From the My System page, select your pool.

Select Custom Color

1. Go to > equipment page.
2. From the equipment page, choose the zone you want to change color.
3. From that zones page, choose Custom Color.
4. Choose your custom color from the color wheel.
5. Choose Apply to apply the custom color to your zone.

Preset Colors

1. Go to > equipment page and select the zone you want to change color.
2. After selecting the zone, then choose from the list of preset colors to apply that preset color to your zone.

Preset Color Shows

1. Go to > equipment page.
2. From equipment page, choose the zone you want to change color.
3. After selecting the zone, then choose from the list of preset color shows to apply that preset color show to your zone.

Adjust Brightness

1. From the equipment page, select the sun icon on the zone where you want to change to adjust the brightness.
2. Move the slider bar up or down with your finger and then click apply to change the brightness.

Section 4. Additional Online Content

For information on the following, please refer to the online manual:

- OneTouch Setup

- Amazon Alexa Light Control
- Troubleshooting

FCC Regulatory Compliance Statement

This device complies with Part 15 of the FCC Rules. Operation is subject to the following two conditions:

1. This device may not cause harmful interference, and
2. This device must accept any interference received, including interference that may cause undesired operation.



Changes or modifications not expressly approved by the party responsible for compliance could void the user's authority to operate the equipment.

- **NOTE:** This equipment has been tested and found to comply with the limits for a Class B digital device, pursuant to Part 15 of the FCC Rules. These limits are designed to provide reasonable protection against harmful interference in a residential installation. This equipment generates, uses and can radiate radio frequency energy and, if not installed and used in accordance with the instructions, may cause harmful interference to radio communications. However, there is no guarantee that interference will not occur in a particular installation.

If this equipment does cause harmful interference to radio or television reception which can be determined by turning the equipment off and on, the user is encouraged to try to correct the interference by one or more of the following measures:

- Reorient or relocate the receiving antenna.
- Increase the separation between the equipment and receiver.
- Connect the equipment into an outlet on a circuit different from that to which the receiver is connected.
- Consult the dealer or an experienced radio/TV technician for help.

Customer Support

A Fluidra Brand | [Jandy.com](https://www.Jandy.com) | [Jandy.ca](https://www.Jandy.ca)

2882 Whiptail Loop # 100, Carlsbad, CA 92010, USA | 1.800.822.7933

2-3365 Mainway, Burlington, ON L7M 1A6, Canada | 1.800.822.7933

©2024 Fluidra. All rights reserved. The trademarks and trade names used herein are the property of their respective owners.

H0830800_REVD



CONFORMS TO UL

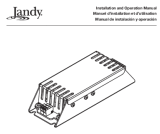
STD 8750

Certified to CSA

STD C22.2 250.13



Documents / Resources

 <p>Installation and Operation Manual Infinite Water Colors® Smart Sync™ LED Adapter Model IWCSS60W</p> <p>WARNING Read the entire manual before attempting to install or operate the product. Failure to follow the instructions may result in property damage, personal injury, or death.</p>	<p>Jandy IWCSS60W Infinite Water Colors Smart Sync LED Adapter [pdf] Installation Guide IWCSS60W Infinite Water Colors Smart Sync LED Adapter, IWCSS60W, Infinite Water Colors S mart Sync LED Adapter, Water Colors Smart Sync LED Adapter, Smart Sync LED Adapter, Syn c LED Adapter, LED Adapter, Adapter</p>
---	--

References

- [User Manual](#)

[Manuals+](#), [Privacy Policy](#)

This website is an independent publication and is neither affiliated with nor endorsed by any of the trademark owners. The "Bluetooth®" word mark and logos are registered trademarks owned by Bluetooth SIG, Inc. The "Wi-Fi®" word mark and logos are registered trademarks owned by the Wi-Fi Alliance. Any use of these marks on this website does not imply any affiliation with or endorsement.