

Case  
'00502-2  
Lights



## Contents

- [1 JandCase C-GY00502-2 Night Lights](#)
- [2 INTRODUCTION](#)
- [3 SPECIFICATIONS](#)
- [4 FEATURES](#)
- [5 SETUP GUIDE](#)
- [6 CARE & MAINTENANCE](#)
- [7 TROUBLESHOOTING](#)
- [8 PROS & CONS](#)
- [9 WARRANTY](#)
- [10 FREQUENTLY ASKED QUESTIONS](#)
- [11 VIDEO – PRODUCT OVERVIEW](#)
- [12 References](#)



## JandCase C-GY00502-2 Night Lights

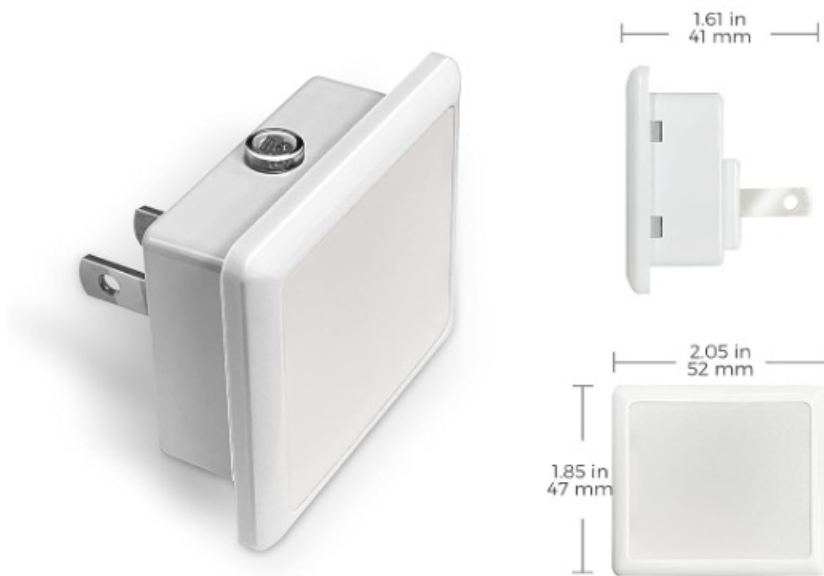


## INTRODUCTION

For your nighttime illumination requirements, the JandCase C-GY00502-2 Night Lights Plug provides the ideal balance of practicality and ease of use. This set, which was introduced by JandCase on January 10, 2023, comes with two plug-in night lights that use only 0.3W of power to produce a warm, 3000K soft white lighting. These night lights, which are reasonably priced at **\$6.99** for the two-pack, are perfect for bathrooms, corridors, kitchens, and bedrooms since they provide enough light to help you navigate without obtruding your vision. They fit easily into any outlet without obstructing neighboring plugs thanks to their small size (3.9" x 2.16" x 1.1") and elegant, glossy plastic finish. They provide energy economy and user-friendliness by automatically turning on in low light and off in bright settings thanks to their sophisticated dusk-to-dawn sensor. These waterproof and lightweight night lamps are ideal for use at home or on the go.

## SPECIFICATIONS

<b>Product Name</b>	JandCase C-GY00502-2 Night Lights Plug
<b>Pack Size</b>	2 Pack
<b>Price</b>	\$6.99
<b>Light Type</b>	LED Night Light
<b>Color Temperature</b>	3000K Soft White
<b>Brightness</b>	40 Lumens
<b>Power Consumption</b>	0.3W
<b>Sensor Type</b>	Dusk-to-Dawn Light Sensor (Auto On/Off)
<b>Installation Type</b>	Plug into Wall
<b>Finish Type</b>	Glossy
<b>Base Material</b>	Plastic
<b>Water Resistance Level</b>	Waterproof
<b>Dimensions</b>	1.61"D x 2.05"W x 1.85" H
<b>Weight</b>	22 Grams
<b>Design</b>	Compact, modern, does not block second outlet
<b>Usage Areas</b>	Bathroom, Hallway, Kitchen, Basement, Stair, Living Room
<b>Included Components</b>	2 Night Lights, Night Lights Plug User Manual
<b>Connectivity Technology</b>	USB
<b>Model Number</b>	C-GY00502-2
<b>Manufacturer</b>	JandCase
<b>Date First Available</b>	January 10, 2023
<b>Special Features</b>	Low energy consumption, portable for travel, soft cozy glow, eye-friendly



## Product Dimension

Not block the second power outlet

### FEATURES

- **Soft White Lamp:** Perfect for use at night, this lamp emits 3000K of warm, comforting, soft white light that is easy on the eyes.



- **Low Power Consumption:** It is economical and energy-efficient, consuming only 0.3 watts of power.
- **Brightness:** 40 lumens is sufficient to light walkways without being overly bright or distracting.
- **Auto Light Sensor:** The light is automatically turned on in low light and off in bright light thanks to a smart dusk-to-dawn light sensor.



- **Compact Size:** Measuring 1.61"D x 2.05"W x 1.85" H, this device is made to be both tiny and discrete.
- **Lightweight:** It is portable and easy to carry because it just weighs 22 grams.
- **Plug-in Design:** Does not require wiring or batteries; simply plugs into a wall socket.
- **Glossy Surface:** For a contemporary appearance, it has a smooth, glossy plastic surface.
- **Sturdy Plastic Base:** Constructed from premium plastic for longevity and security.
- **Waterproof:** Provides resistance to water, making it appropriate for usage in humid areas like bathrooms.
- **Dual Pack:** Contains two night lights for different rooms or places.
- **USB Connectivity:** To use electricity efficiently, USB technology is supported.
- **Versatile Use:** Fits well in living rooms, basements, kitchens, corridors, bathrooms, and stairs.

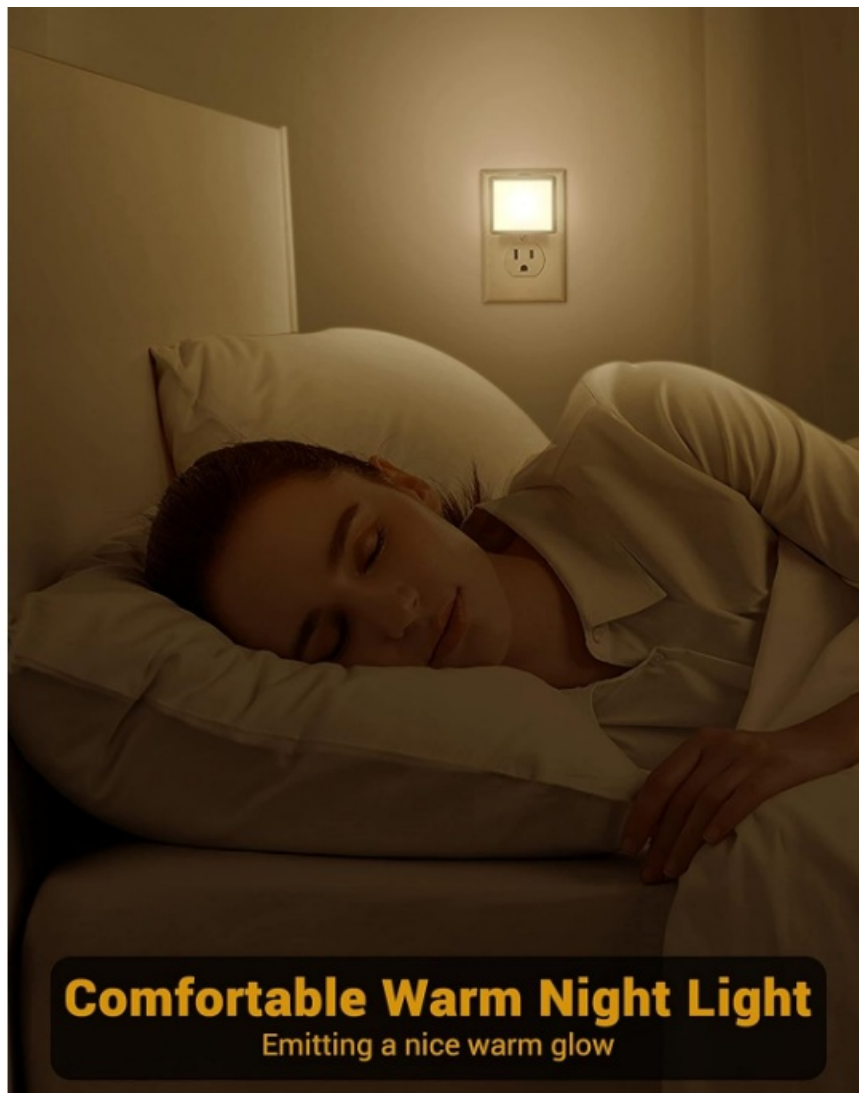


- **Non-Blocking Design:** It doesn't obstruct nearby outlets thanks to its small size.

## SETUP GUIDE

- **Choose Outlet Location:** In the chosen area (bedroom, bathroom, or hallway), pick a regular wall outlet.
- **Make Sure the Outlet Is Working:** Verify the power supply by testing the outlet with another device.
- **Night Light Plug In:** Securely place the night light into the outlet.
- **Position Facing Open Space:** To accurately measure ambient light, make sure the sensor is facing an open area.
- **Avoid Obstacles:** Keep draperies and furniture away from the light or sensor.
- **Test Auto Sensor:** To make sure the night light activates automatically, switch off the lights in the room.
- **Exposure to Daylight:** Make sure the night light is off when in a bright room or during the day.
- **Use in Several Rooms:** Install extra night lights in different rooms by repeating the process.
- **Avoid Wet Areas:** For safety, stay away from direct water contact even though the area is waterproof.
- **Utilization in Vertical Outlets:** Made to accommodate common vertical wall outlets.
- **Stay Away from Heat Sources:** Steer clear of locations close to fireplaces or heaters.
- **Travel Use:** Its small size and light weight make packing for travel simple.
- **Automatic Operation:** Depend on the sensor for automatic functioning; no manual switching is required.
- **Verify Loose Fit:** To prevent flickering, make sure the plug fits tightly.
- **Clean Before Use:** Before plugging in, use a dry cloth to wipe the surface to get rid of any dust.





## CARE & MAINTENANCE

- **Frequent Dusting:** To avoid dust accumulation, wipe the night light's surface with a dry microfiber towel.
- **Avoid Submersion in Water:** If necessary, wipe with a moist cloth, but never submerge in water.
- **Verify Sensor Cleanliness:** For precise operation, keep the light sensor clear of smudges and debris.
- **Examine for Damage:** Frequently look for cracks or other damage on the plug and casing.
- **Unplug Before Cleaning:** Prior to cleaning, always unplug the night light.
- **Avoid Harsh Chemicals:** Steer clear of abrasive cleaners and, if need, use mild cleaning solutions.
- **Store Correctly:** Keep in a cool, dry location when not in use.
- **Avoid Overloading Outlets:** Avoid plugging in several high-power gadgets at once.
- **Replace if Flickering:** Take into consideration replacing the light if it flickers or does not turn on.
- **Keep Away from Children:** To prevent harm, keep out of tiny children's reach.
- **Check for Firmware Upgrades:** For better sensor performance, check manufacturer upgrades, albeit this is doubtful.
- **Avoid Direct Sunlight:** Plastic finishes may deteriorate after extended exposure to direct sunlight.
- **Utilize Indoors First and Foremost:** Made for indoor usage; exposure to the outdoors may shorten lifespan.
- **Keep an Eye on Energy Use:** Unplug if not in use for prolonged periods of time, even when it is low power.

## TROUBLESHOOTING



Issue	Possible Cause	Solution
Night light does not turn on	No power to outlet	Check outlet power and try another outlet
	Light sensor blocked or dirty	Clean sensor and ensure it is not covered
Light stays on during daytime	Sensor malfunction or dirty	Clean sensor; if persists, contact support
Light flickers or dims	Loose connection or faulty bulb	Remove and reinsert; replace if necessary
Light too dim	Low lumen output by design	Use in smaller or enclosed spaces
Night light overheats	Faulty internal components	Unplug immediately and contact support
Light sensor not activating	Sensor sensitivity issue	Reset power by unplugging for 30 seconds
Night light blocks outlet	Design incompatibility	Use in outlets where space is sufficient
Night light not waterproof	Exposure to excessive moisture	Use only in dry indoor areas
Light flickers intermittently	Electrical interference or surge	Use surge protector or try different outlet

## PROS & CONS

### Pros:

- Energy-efficient with only 0.3W power consumption
- Automatic dusk-to-dawn sensor for hands-free operation
- Compact design that doesn't block other outlets
- Soft 3000K light that is gentle on the eyes
- Waterproof and durable plastic construction

### Cons:

- Light output (40 lumens) may be too dim for larger spaces
- Fixed color temperature, no option for adjustable brightness
- Only suitable for indoor use despite waterproof rating
- No USB charging option despite connectivity technology listed
- May not fit all outlet types due to design

## WARRANTY

JandCase provides a standard manufacturer warranty on the C-GY00502-2 Night Lights Plug, typically covering defects in materials and workmanship for a period of one year from the date of purchase. This warranty ensures that any malfunction or failure under normal usage conditions will be repaired or replaced at no additional cost to the customer. For warranty claims, customers should retain the original purchase receipt and contact JandCase customer service directly. The warranty does not cover damage caused by misuse, accidents, or unauthorized modifications.

## FREQUENTLY ASKED QUESTIONS

What type of light does the JandCase C-GY00502-2 Night Light emit?

The night light emits a cozy 3000K soft white glow at 40 lumens, offering gentle illumination that won't strain your eyes.

Where can the JandCase C-GY00502-2 Night Light be used?

It's perfect for use in bathrooms, kitchens, hallways, stairways, basements, and other indoor areas where subtle lighting is needed.

How is the JandCase C-GY00502-2 Night Light installed?

Simply plug it into any standard wall outlet. No tools, wiring, or setup required.

How energy efficient is the JandCase C-GY00502-2 Night Light?

Very efficient; it consumes only 0.3W of power, offering a cost-effective lighting solution for continuous use.

What should I do if the JandCase C-GY00502-2 doesn't turn on in the dark?

Check if the sensor is blocked or if the outlet is functional. Reposition or test it in a different socket to troubleshoot.

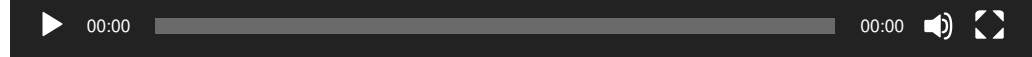
What are the dimensions of the JandCase C-GY00502-2 Night Light?

It measures 3.9 (D) x 2.16 (W) x 1.1 (H), making it small enough for compact wall spaces.

What is included in the JandCase C-GY00502-2 package?

The product comes in a 2-pack of plug-in LED night lights. Additional components are needed.

## VIDEO – PRODUCT OVERVIEW



[References: manuals.plus/wp-content/uploads/2025/04/JandCase-C-GY00502-2-Night-Lights-Plug-User-Manual.mp4](#)

- [User Manual](#)

**Manuals+.** [Privacy Policy](#) | [@manuals.plus](#) | [YouTube](#)

This website is an independent publication and is neither affiliated with nor endorsed by any of the trademark owners. The "Bluetooth®" word mark and logos are registered trademarks owned by Bluetooth SIG, Inc. The "Wi-Fi®" word mark and logos are registered trademarks owned by the Wi-Fi Alliance. Any use of these marks on this website does not imply any affiliation with or endorsement.