



James C77 Bluetooth FM Transmitter User Manual

[Home](#) » [JAMES](#) » James C77 Bluetooth FM Transmitter User Manual 

James C77 Bluetooth FM Transmitter User Manual



User Manual

This Bluetooth card wireless FM lets our stream music and calls directly from your device to your car's FM stereo system, The built-in Bluetooth V6.3 chip provides a clear hands free call function Siri google voice assistant, and Bass boss for enhanced music stereo audio performance. It aulos features dual charging ports which will greatly save deuce's charging time.

Please read the User manual carefully before using it. Hope this device makes your driving more interesting and safer.

Contents

- [1 Package Contents:](#)
- [2 Specifications:](#)
- [3 Product Overview:](#)
- [4 How to use:](#)
- [5 Bluetooth Pairing](#)
- [6 Function Introduction:](#)
- [7 Documents / Resources](#)
 - [7.1 References](#)

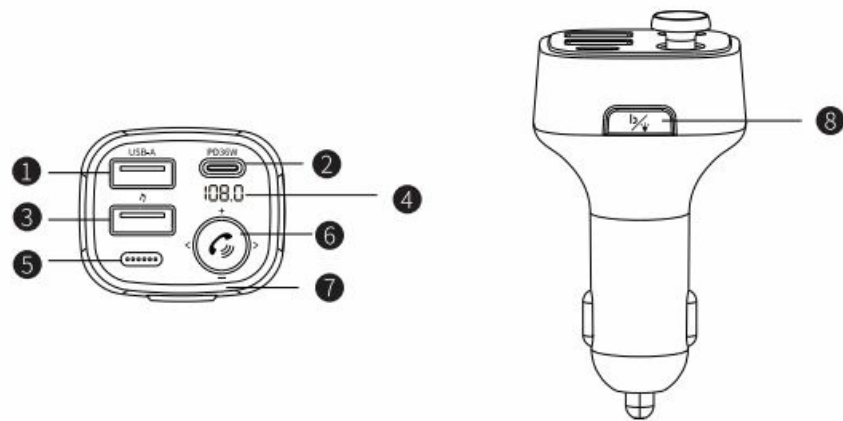
Package Contents:

User Manual
Warranty Policy

Specifications:

Model	C77
Bluetooth Version	V5.3
Bluetooth Connection Distance	8m (Max.)
Frequency Range	87.5-108.0MHz
FM	Approx.3m
Input	DC12-24V
Fuse	6A
USB-A Output	5V==2.4A
Type-C Output	5V==3A, 9V==3A, 12V==3A(36W Max.)
Total Power	48W(Max)
Product Weight	Approx. 54g
Product Size	Approx. 35.5*80.5*18mm

Product Overview:



- ① USB-A Port
- ② Type-C Port
- ③ U Disk Port
- ④ FM Channel Display
- ⑤ Mic
- ⑥ Multifunction Button
- ⑦ LED Light
- ⑧ "b" Button

How to use:

FM

1. Tune your car radio to a clean, empty FM channel with no programming.

Tips: What is an empty FM channel?

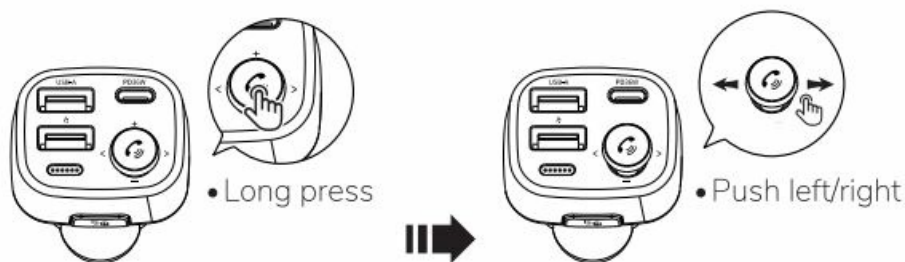
- An empty channel with no programming will only make a slight rustle or snow sound on your car radio.



2. Plug the FM transmitter into the cigarette lighter or power port. It will be automatically powered on with the LED displaying the vehicle's battery voltage 2 seconds, FM frequency, then showing the word "bt".



3. Long press the multifunction button, then adjust the transmitter to the same frequency on the car by pushing the Multifunction button left or right when the LED displays FM frequency.

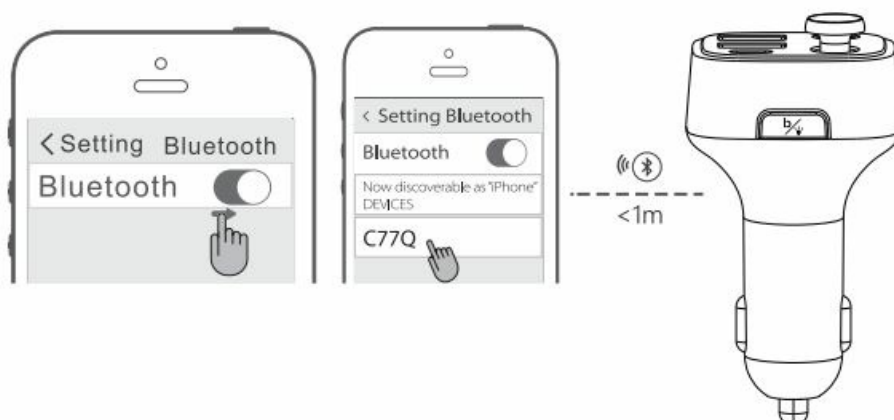


Tips for the best audio quality:


1. Find the idle frequency with minimal interference.
2. Volume control: adjust the volume for the car radio to 1/3 or 1/2. but not exceed 2/3: the phone to 2/3 or 4/5 but not to full volume.

Bluetooth Pairing

1. When the LED display shows "bt" and the device will enter into Bluetooth pairing mode.
2. Enable Bluetooth on the device you want to pair.
3. Search and select ID " C77Q " from the list, then connect.
4. If asked enter the pairing code '0000' or '1234'.



Function Introduction:

Button		Operation	Function
"b"		1) Short Press	Switch b1(bass) / b0(normal)
		2) Press Twice	LED light ON / OFF
		3) Long Press	Turn ON/OFF FM, LED Display, Bluetooth
 Multifunction Button	Music Mode	1) Short Press	Play / Pause
		2) Push Upward	Volume +
		3) Long Push Upward	Quick Volume +
		4) Push Downward	Volume -
		5) Long Push Downward	Quick Volume -
	Incoming Call Mode	1) Short Press	Answer the call
		2) Long Press	Hang up the call
	On a Call	1) Short Press	Hang up the call
		2) Long Press	Convert to Private Call
	Standby Mode	1) Press Twice	Start Siri / Google
		2) Long Press	Enter FM Mode
		3) Push Upward	Volume +
		4) Long Push Upward	Quick Volume +
		5) Push Downward	Volume -
		6) Long Push Downward	Quick Volume -
	FM Mode	1) Push Left	Channel -
		2) Long Push Left	Quick Channel -
		3) Push Right	Channel +
		4) Long Push Right	Quick Channel +

Incoming call status

A number broadcast in English when there is incoming call.

Music Status

When connect it to the Bluetooth or U Disk, you can play the music.

Low voltage Status

When the Car's battery voltage is less than 12V, the display will flash to remind you. However there is no influence on the function of Bluetooth or U Disk.

Charging mode

When this car Bluetooth transmitter is powered by a car lighter socket, connecting the PD Type-C port or USB-A port to your mobile phones with a required cable. It will serve as a mobile phone charger.

Note: Voltage outputs are dual port fast charging up to 48W max.

Caution:

1. Please do not use the product in severe high temperatures. humidity. dusty or corrosive environments.
2. Please remove the product from the cigarette lighter port when not in use for a long time.
3. Never disassemble the product without due permission. otherwise the warranty will be invalid.
4. Do not knock or drop this product to avoid internal damage.
5. Dispose of this product as per local law and regulations.

Shenzhen James Audio Technology co.,Ltd

Address: 4th Floor a-building, No.2 Guiyuan Road, Guihua Community,
Guanlan Town, Longhua New District, Shenzhen China

This device complies with part 15 of the FCC Rules. Operation is subject to the following two conditions: (1) This device may not cause harmful interference, and (2) this device must accept any interference received, including interference that may cause undesired operation.

Any Changes or modifications not expressly approved by the party responsible for compliance could void the user's authority to operate the equipment.

Note: This equipment has been tested and found to comply with the limits for a Class B digital device, pursuant to part 15 of the FCC Rules. These limits are designed to provide reasonable protection against harmful interference in a residential installation.

This equipment generates uses and can radiate radio frequency energy and, if not installed and used in accordance with the instructions, may cause harmful interference to radio communications. However, there is no guarantee that interference will not occur in a particular installation. If this equipment does cause harmful interference to radio or television reception, which can be determined by turning the equipment off and on, the user is encouraged to try to correct the interference by one or more of the following measures:

- Reorient or relocate the receiving antenna.
 - Increase the separation between the equipment and receiver.
 - Connect the equipment into an outlet on a circuit different from that to which the receiver is connected.
 - Consult the dealer or an experienced radio/TV technician for help.
- This equipment complies with FCC radiation exposure limits set forth for an uncontrolled environment. This equipment should be installed and operated with minimum distance 20cm between the radiator & your body.

Documents / Resources



[James C77 Bluetooth FM Transmitter](#) [pdf] User Manual
2BC49-C77, 2BC49C77, C77 Bluetooth FM Transmitter, C77, Bluetooth FM Transmitter, FM Transmitter, Transmitter

References

- [User Manual](#)

[Manuals+](#), [Privacy Policy](#)

This website is an independent publication and is neither affiliated with nor endorsed by any of the trademark owners. The "Bluetooth®" word mark and logos are registered trademarks owned by Bluetooth SIG, Inc. The "Wi-Fi®" word mark and logos are registered trademarks owned by the Wi-Fi Alliance. Any use of these marks on this website does not imply any affiliation with or endorsement.