

JALL CH-08 LED DIGITAL ALARM CLOCK



JALL CH-08 LED Digital Alarm Clock User Manual

[Home](#) » [JALL](#) » JALL CH-08 LED Digital Alarm Clock User Manual 

Contents

- 1 JALL CH-08 LED Digital Alarm Clock
- 2 FEATURES
- 3 Product list
- 4 Time setting
- 5 Alarm setting
- 6 Operation when alarm rings
- 7 Brightness and Volume
- 8 Trouble shooting
- 9 FREQUENTLY ASKED QUESTIONS
- 10 VIDEO – PRODUCT OVERVIEW
- 11 References
- 12 Related Posts

JALL®

JALL CH-08 LED Digital Alarm Clock



Please remove the protective film from the mirror surface when using the clock.

We value every customer and commit to providing a lifetime warranty service to each and every one of them. To activate lifetime warranty, please visit: www.jall-us.com

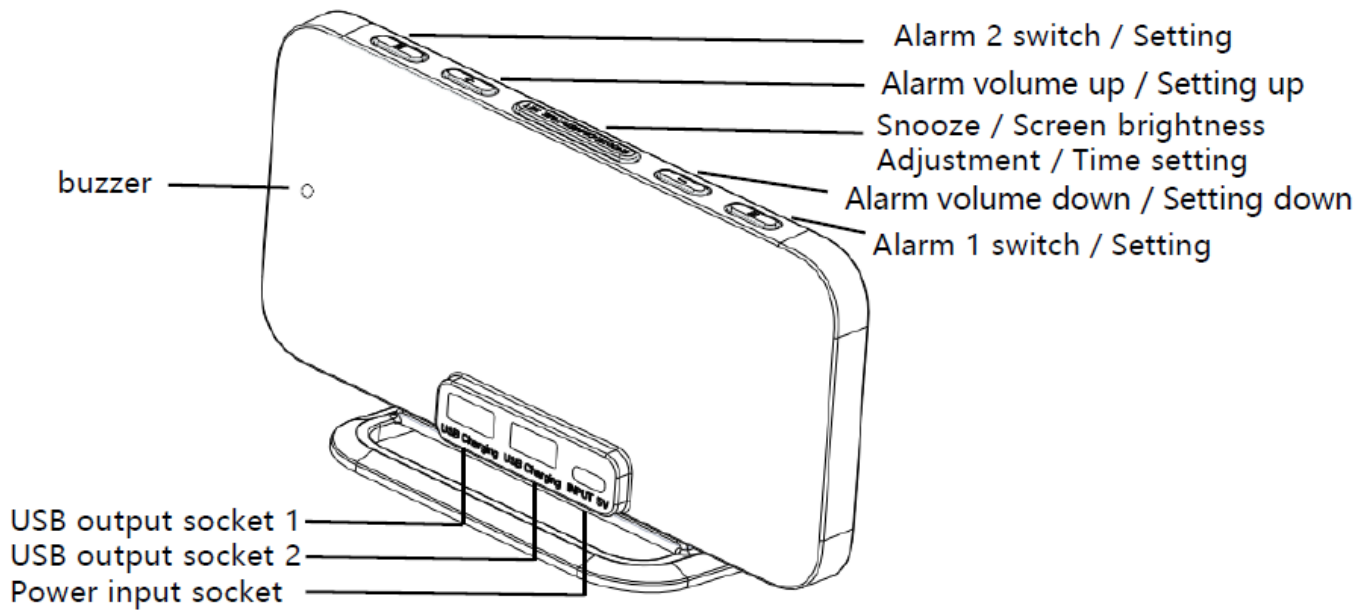
Missing accessories or any other problems, please contact us: ThreeDucksDirect@outlook.com

FEATURES

- **Large LED Display:** The time is shown by clear, easy-to-read digital numbers that can be seen from far away.
- **Dual Alarm Function:** This feature lets you set two separate clocks, which is great for couples or people with different schedules.
- **Snooze Button:** Has a snooze feature that can be quickly triggered by pressing a button.
- **Adjustable Brightness:** You can change the display's brightness to suit your needs or the lights in the room.
- **Sound Control:** You can use a sound, like a clap, to turn on the screen without using your hands.
- **USB Charging Port:** There is a USB port built in so you can charge your phone or other devices while you sleep.
- **Battery Backup:** Supports battery backup so the clock and alarms work even when the power goes out.
- **Wooden Design:** The stylish wood finish goes with a lot of different types of decor and gives your room a modern look.
- **Temperature Display:** This shows the temperature of the room in either Celsius or Fahrenheit at the moment.
- **Display for Humidity:** Shows how damp the room is right now.
- **speech Control:** You can use speech orders to turn on the screen.
- You can choose between 12-hour and 24-hour time modes with this option.
- **Alarm for Weekdays and Weekends:** Alarms that can be changed for weekdays and weekends.
- **Compact Size:** The form is small and easy to move, making it perfect for desks or bedroom tables.
- **Easy Setup:** The design is simple and easy to use, so setting the time and timers is quick and easy.

- You can choose from a number of different warning tones, such as tunes and sounds of nature.
- **Volume Control:** You can change the volume of the sound to fit your tastes.
- **Memory Function:** When the power goes out, the battery backup keeps the settings and time.
- **Energy-efficient:** It uses little electricity, so it's a good choice for saving energy.

Product list



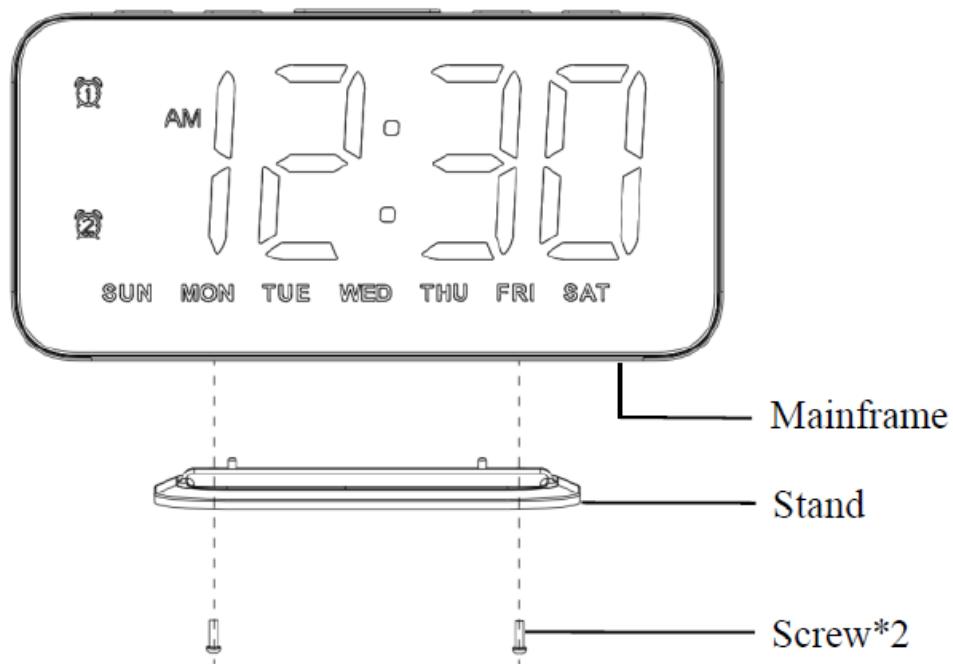
Power adapter (5V
1A)



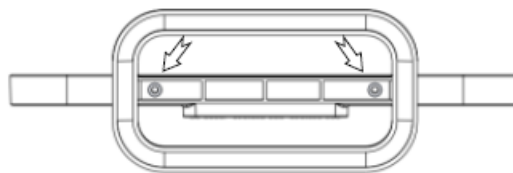
Power cord



User manual



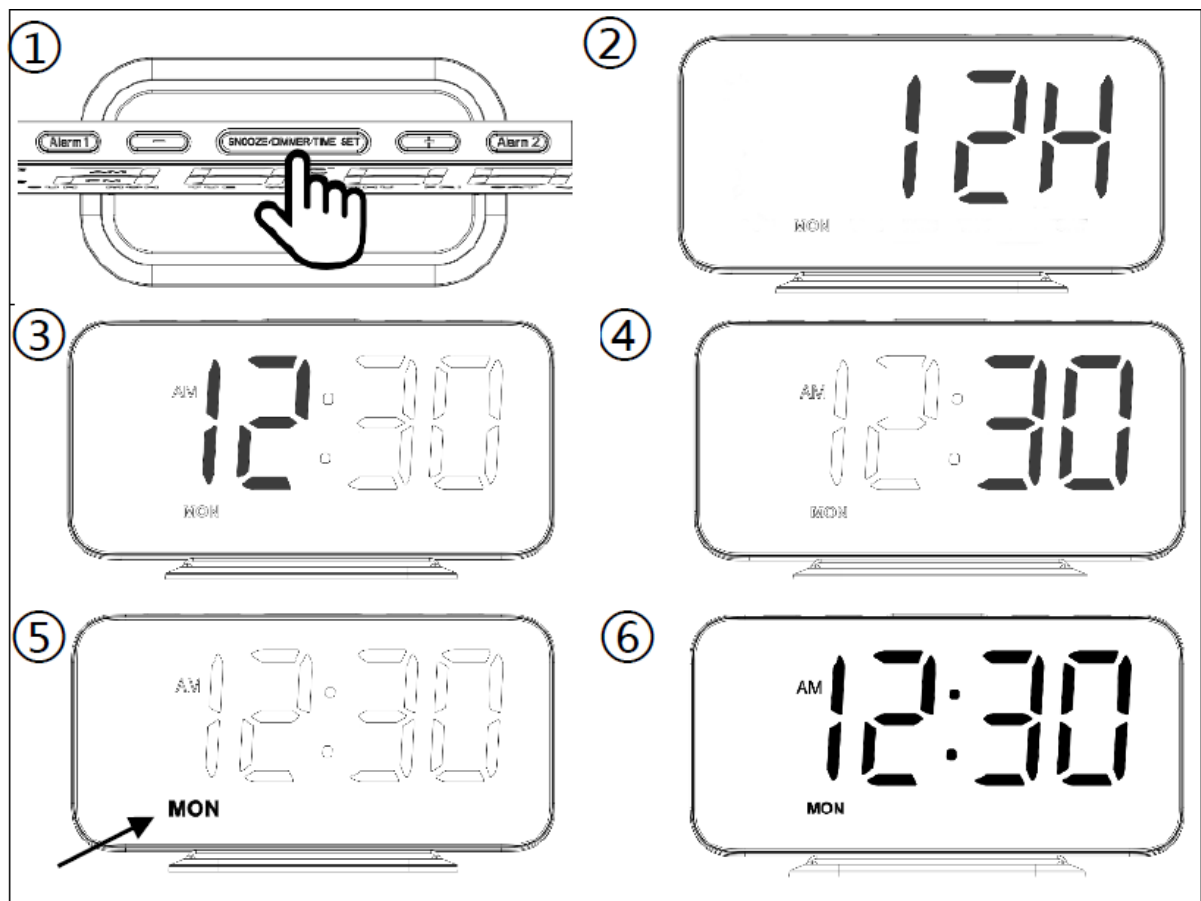
We completed installation before the alarm clock left the factory.



Bottom of the clock

Time setting

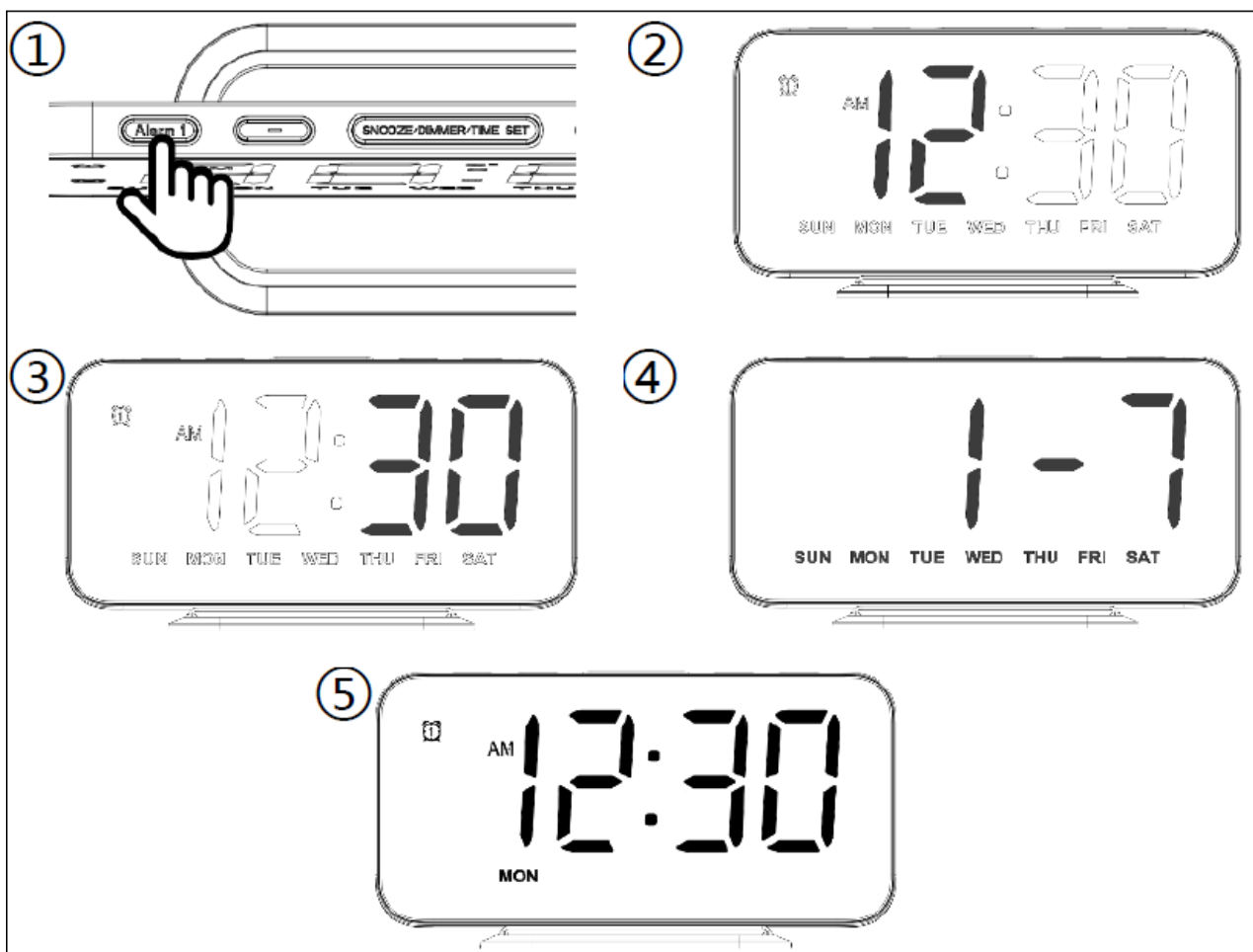
1. Hold for 3s to enter the time setting.
2. Use “+” / “-” button to choose 12/24 hour mode. Then, press “SNOOZE” to confirm.
3. Use the “+” / “-” button to set the hour. Then, press “SNOOZE” to confirm.
4. Then, press Then, press stone to the minute.
5. Use the “+” / “-” button to set the day. Then, press “SNOOZE” to confirm.
6. Finfish setting.



Alarm setting

(take alarm 1 as an example)

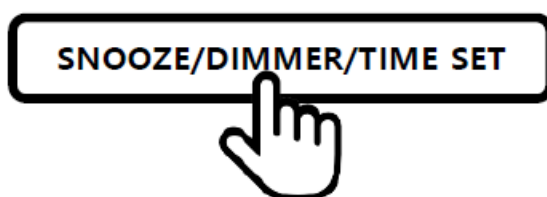
1. Hold for 3s to enter alarm 1 setting.
2. Use the “+” / “-” button to set the hour of alarm 1. Then, press “ALARM 1” to confirm.
3. Use the “+” / “-” button to set the minute of alarm 1. Then, press “ALARM 1” to confirm.
4. Use the “+” / “-” button to set the working mode of alarm 1:
 - 1 – 7 = MON – SUN
 - 1 – 5 = MON – FRI
 - 6 – 7 = SAT – SUN
 Then, press “ALARM 1” to confirm.
5. Finish setting.
6. The setting of alarm 2 is the same to alarm 1.
 - Press the “Alarm 1” / “Alarm 2” button to turn on / off the corresponding alarm.
 - When an alarm is turned on, the corresponding alarm icon will be displayed.



Operation when alarm rings

When alarm is turned on, the alarm clock will ring at the setting time. If it starts to ring and wake you up, you can do the things following:

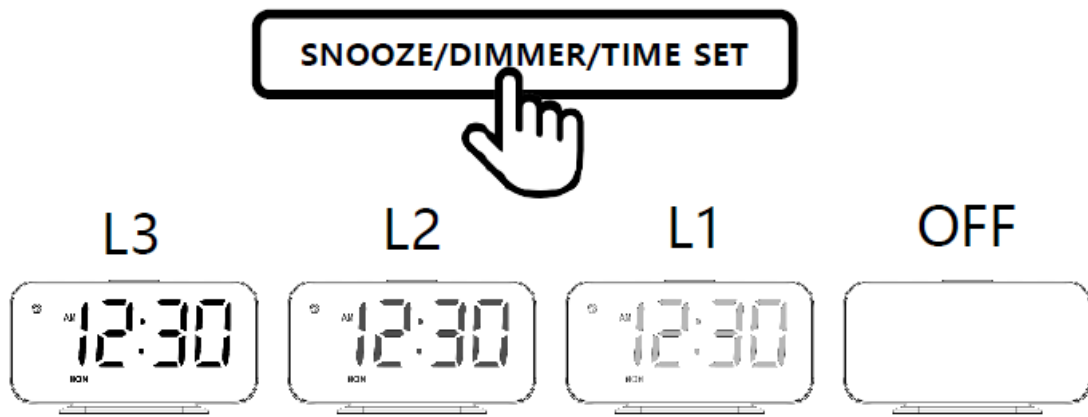
1. **Snooze** Press "SNOOZE" button to enter the snooze mode. The snooze icon will display and flash on the screen. After 9 minutes, it will ring again. P.S. support 3 times of snooze at most.



2. **Stop alarm this time** In alarm / snooze state, press any button except "SNOOZE" button will stop this alarm, and will not affect the alarm next day (Hold "SNOOZE" button for more than 25 can also stop the alarm this time).
3. **When unmanned** When the alarm clock rings for 20MIN without any operation, it will stop automatically and the alarm next day will not be affected.

Brightness and Volume

1. **Screen brightness** In time display state, press "SNOOZE/DIMMER/TIME SET" button to adjust brightness of the screen from bright to dark (L3 – L2 – L1 – OFF – L3).



2. **Alarm clock volume** Press “+”/“-” button to adjust volume of the alarm clock from V05- V01. P.S. default volume is V05.

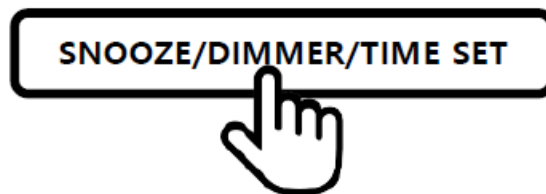
Trouble shooting

Why does the screen of alarm clock flash when charging the smartphone?

- It may be caused by too low input power and too high output power. Please try not to connect too many high-power-cost devices or to use a 5V 2A power adapter. The recommended maximum power of the power adapter is 5V 2A.

Why doesn't my alarm clock display anything and can't do any operation with it?

- You may have set the brightness of alarm clock to “OFF” level. Please try using “SNOOZE” button.



What should I do if I have problems on using the alarm clock or meet quality problems?

- Missing accessories or any other problems, please contact us: ThreeDucksDirect@outlook.com

FREQUENTLY ASKED QUESTIONS

What brand manufactures the JALL CH-08 LED Digital Alarm Clock?

The JALL CH-08 LED Digital Alarm Clock is manufactured by JALL.

What type of display does the JALL CH-08 LED Digital Alarm Clock feature?

The JALL CH-08 LED Digital Alarm Clock features a digital display.

What special feature does the JALL CH-08 LED Digital Alarm Clock have?

The special feature of the JALL CH-08 LED Digital Alarm Clock is its built-in clock.

What are the product dimensions of the JALL CH-08 LED Digital Alarm Clock?

The JALL CH-08 LED Digital Alarm Clock measures 6.4 inches in width and 6.7 inches in height.

How is the JALL CH-08 LED Digital Alarm Clock powered?

The JALL CH-08 LED Digital Alarm Clock is powered by corded electric.

What material is the frame of the JALL CH-08 LED Digital Alarm Clock made of?

The frame material of the JALL CH-08 LED Digital Alarm Clock is Acrylonitrile Butadiene Styrene (ABS).

What type of watch movement does the JALL CH-08 LED Digital Alarm Clock use?

The JALL CH-08 LED Digital Alarm Clock uses automatic watch movement.

In what mode does the JALL CH-08 LED Digital Alarm Clock operate?

The JALL CH-08 LED Digital Alarm Clock operates in electrical mode.

What is the item weight of the JALL CH-08 LED Digital Alarm Clock?

The item weight of the JALL CH-08 LED Digital Alarm Clock is 7.1 ounces.

Can you tell me the price of the JALL CH-08 LED Digital Alarm Clock?

The price of the JALL CH-08 LED Digital Alarm Clock is \$22.99.

What should I do if the JALL CH-08 LED Digital Alarm Clock is not displaying the time?

First, ensure that the power cord is securely plugged into a functioning outlet. Check if there's a power outage or a tripped circuit breaker affecting the clock's power source.

How can I troubleshoot if the alarm on my JALL CH-08 LED Digital Alarm Clock is not ringing?

Check the alarm settings to ensure it's correctly set to the desired time and that the volume is adjusted appropriately. Test the alarm function with a different time setting and ensure the clock is not set to silent mode.

What steps should I take if the display on the JALL CH-08 LED Digital Alarm Clock is flickering?

Inspect the power cord and connections for any damage or loose connections that may be causing intermittent power supply. Try plugging the clock into a different outlet to rule out electrical issues.

How can I troubleshoot if the buttons on the JALL CH-08 LED Digital Alarm Clock are not responding?

Check for any dirt, debris, or damage around the buttons that may be obstructing their functionality. Gently clean the surface of the clock and buttons with a soft, dry cloth.

What should I do if the alarm sound on my JALL CH-08 LED Digital Alarm Clock is distorted?

Ensure that the volume is adjusted to a suitable level and that there are no obstructions around the clock that may be affecting the sound quality. Test the alarm with different volume settings and consider resetting the clock to its factory settings.

How can I troubleshoot if the JALL CH-08 LED Digital Alarm Clock is not responding to manual adjustments or settings changes?

Try resetting the clock to its factory settings by following the instructions provided in the user manual. Check if there are any firmware updates available for the clock that may address the issue.

VIDEO – PRODUCT OVERVIEW



References

- [User Manual](#)

[Manuals+](#), [Privacy Policy](#)

This website is an independent publication and is neither affiliated with nor endorsed by any of the trademark owners. The "Bluetooth®" word mark and logos are registered trademarks owned by Bluetooth SIG, Inc. The "Wi-Fi®" word mark and logos are registered trademarks owned by the Wi-Fi Alliance. Any use of these marks on this website does not imply any affiliation with or endorsement.