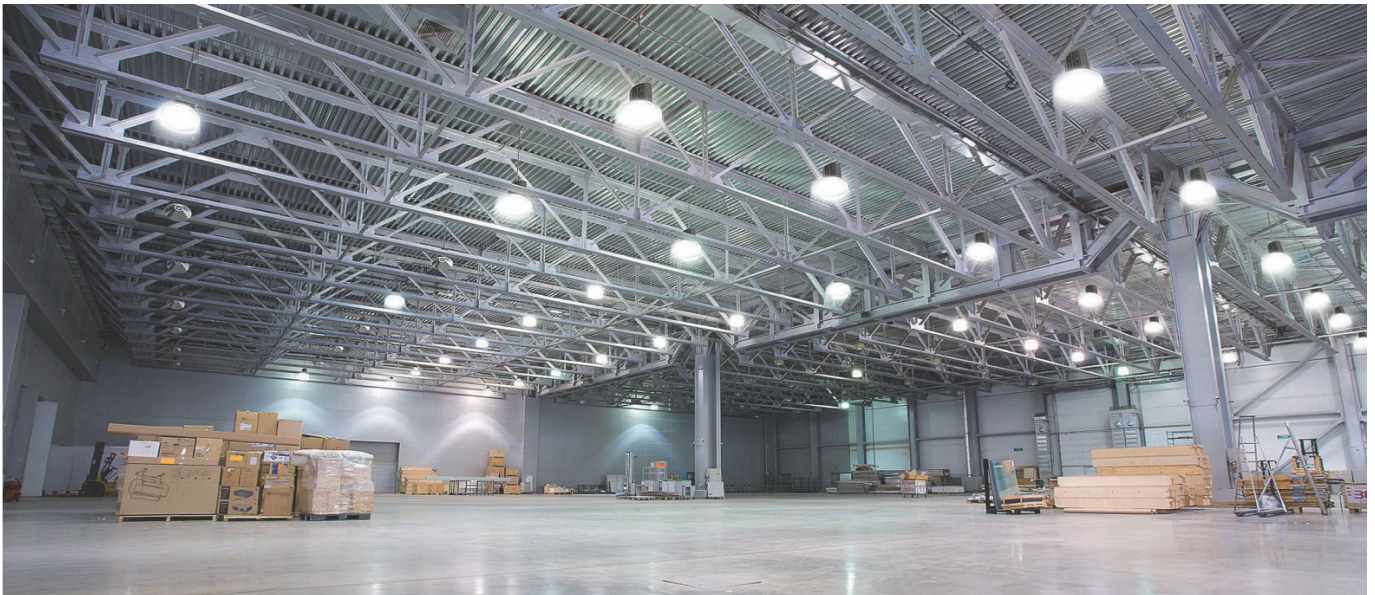


JADEMAR JRHBS Series High Output and High Ambient Round High Bay Instruction Manual

[Home](#) » [JADEMAR](#) » JADEMAR JRHBS Series High Output and High Ambient Round High Bay Instruction Manual 



JRHBS Series High Output and High Ambient Round High Bay
Instruction Manual



Contents

- [1 PRODUCT DESCRIPTION](#)
- [2 CERTIFICATIONS & COMPLIANCES](#)
- [3 PRODUCT DIMENSIONS](#)
- [4 SPECIFICATION SUBMITTAL DETAIL](#)
- [5 MOUNTING OPTIONS – PENDANT SWIVEL CANOPY TYPES](#)
- [6 PHOTOMETRY](#)
- [7 Documents / Resources](#)
 - [7.1 References](#)
- [8 Related Posts](#)

PRODUCT DESCRIPTION

The Jademar JRHBS Round High-Bay luminaire is designed to deliver high efficacy, high lumen packages and precise opal control to illuminate the most challenging applicaandard LED Technology offers the soluo enhance products at all levels of commercial and industrial uses requiring the best opolor.

The JRHBS High Efficacy High-Bay luminaire offers several industry standard mounoduct to be posior upgrade opportuni or new installaange of industrial applica

FEATURES

- Housing: Symmetrical design for consistent installed results. A large number of heat sinks for maximum heat dissipaect added into the system, more energy would be saved and pretenance than HID technology.
- Condenser Lens is both high temperature resistant and aestheally pleasing to achieve maximum output luminous ux.
- Efficiency higher than 160lm/W, designed to replace 750W and 1000W HID while consumes 250W and 340W.
- Open the drive compartment cover from below to facilitate inspec assembly.
- 120 degree lens guarantees light intensity and light uniformity.
- Mounable for Hook or 3/4" Conduit pendant. Hook (default included) or Conduit pendant way for different applica
- Opan be offered for maximizing energy savings.
- Optment dial allows the fixture to meet higher ambient temperature requirements.
- Operaemperature is -40C to 65C (-40F to 149F).
- Resistant to shock and vibra
- UL/cUL IP66 wet locaC qualified.
- AkzoNobel Powder Coated Aluminum Cast Profile
- Corrosion Resistant with 168 Hours of Salt Spray TesTM- B117-73 standards

CONTROLS FEATURES

- Opel Microwave Occupancy Sensor
- Bluetooth® Indoor Controls Op
- Handheld Remote Control for Sensor Programming
- EM Pack Op
- Power cord length opavailable
- 6kV Surge Protector Built Into Driver

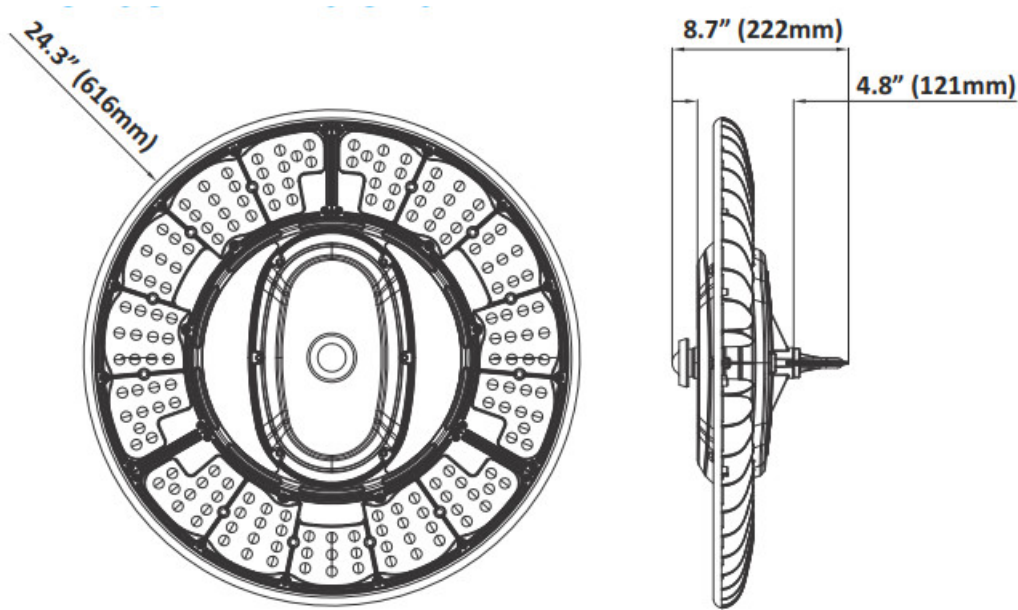
CERTIFICATIONS & COMPLIANCES



PERFORMANCE SUMMARY

Primary Input Power	250W / 340W
Average Efficacy	161 lm/W on average
Input Voltage	120-277VAC / 347-480VAC Options
CCT Options	4000K / 5000K
Controls Options	Bi-Level Microwave Occupancy Sensor and Bluetooth® Indoor Controls Options
CRI	>70 Standard
Ambient Temperature	-40°C to 65°C (-40°F to 149°F)
Certifications & Compliances	UL Listed / DLC Pending
Lifetime Based on TM21	L70 ≥ 174,000 Hrs / L80 ≥ 129,000 Hrs/L90 ≥ 81,000 Hrs
Limited Warranty	10 Years

PRODUCT DIMENSIONS



Weight
 250W: 16.27lbs
 340W: 17.57

SPECIFICATION SUBMITTAL DETAIL

Product Series	Wattage	Input Voltage	CCT	Light Distribution	CRI	Controls Options	Surge Protection	Housing Color	Other Options
JRHBS	250W 340W	Blank (120-277VAC) H (347-480VAC)	40K (4000K) 50K (5000K)	120D (120° Angle) Standard	Blank (80 CRI) Standard	BMW0 (Bi-Level Microwave Occupancy Sensor) JICS-BT-SC (Bluetooth Indoor Controls System)	Blank (No Surge Protection) SP (Surge Protection)	BZ (Bronze Finish) Standard WH (White Finish - *Special Order*) BK (Black Finish - *Special Order*)	Blank (6' Power Cord) Standard PWC12 (12' Power Cord) NP3 (3-Pin 277VAC Nema power plug)

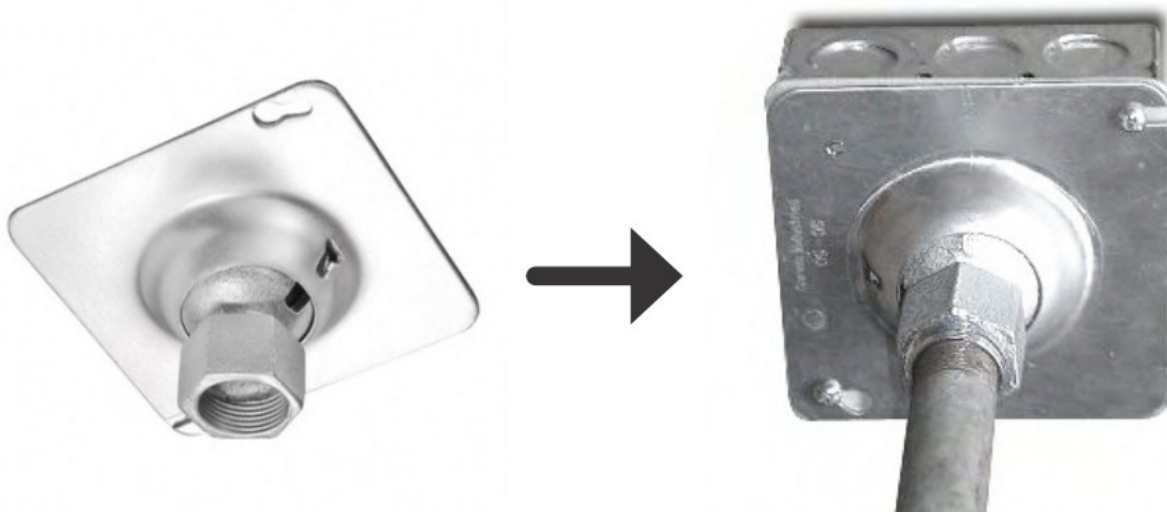
FIELD INSTALLED OPTIONS

RCS-75-34	34 (3/4") Swivel Canopy 4" for Round/Octagonal J-BOX with cover
SCS-75-34	34 (3/4") Swivel Canopy 4" for Square J-BOX with cover
RSC-RM-34-18P	34 (3/4") with 18" pipe Swivel Canopy 4" for Round/Octagonal J-BOX Rapid Mount w/Hinged Door
SSC-RM-34-18P	34 (3/4") with 18" pipe Swivel Canopy 4" for Square J-BOX Rapid Mount w/Hinged Door

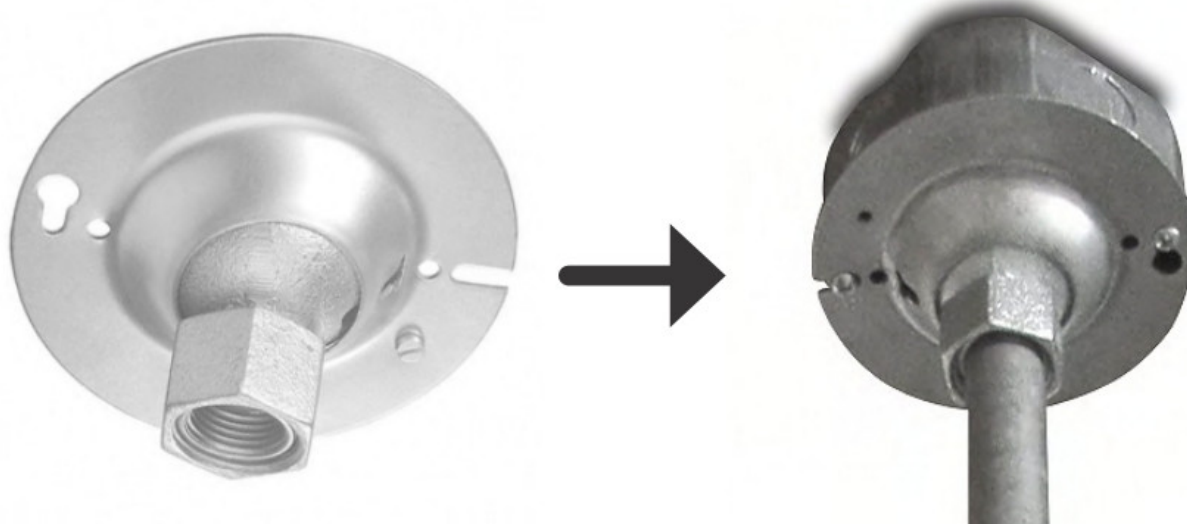
LUMEN PERFORMANCE AND ELECTRICAL DATA

Model Number	JRHEIS-250W				JRHELS-340W			
Nominal Wattage	250W				340W			
Input Voltage	120-277V		347-480V		120-277V		347-480V	
Color Temperature (CCT)	4000K	5000K	4000K	5000K	4000K	5000K	4000K	5000K
Lumens (lm)	40,000	40,100	40,300	41,000	54,300	55,500	54,300	55,500
Nominal Efficacy (lm/W)	160	160	161	164	160	163	160	163
Ambient Working Temperature	40°C to 65°C (-40°F to 149°F)							
CRI	>70							
Light Distribution	120° PC Optics Standard							
Certifications & Compliances	FCC / UL Listed / DLC Pending							
Dimming / Control Options	Bi-level Microwave Occupancy Sensor w/ Hand-held Remote Control Option							
Power Factor	>0.9							
THD	>15%							
Lifetime Based on TM21	L70 @ 174,000Hrs / L80 @ 129,000Hrs / L90 @ 81,000Hrs							
Housing Material	AkzoNobel Powder Coated Aluminum Cast Profile							
Limited Warranty	10 Years Limited							

MOUNTING OPTIONS – PENDANT SWIVEL CANOPY TYPES



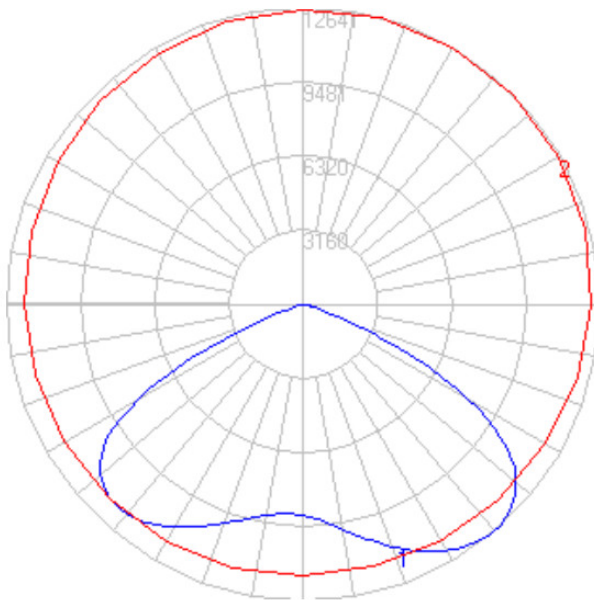
Swivel Canopy 4" for Round/Octagonal J-BOX with cover:
RCS-75-12 or 34 (1/2" / 3/4)



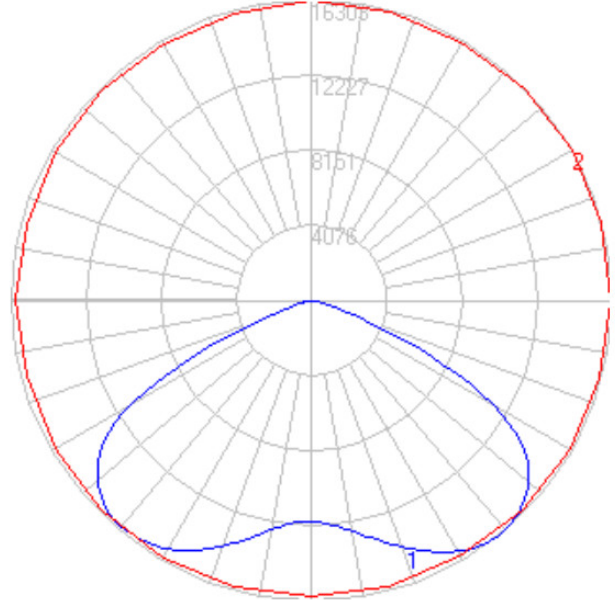
Swivel Canopy 4" for Square J-BOX with cover:
SCS-75-12 or 34 (1/2" / 3/4)

PHOTOMETRY

JRHBS-250W



JRHBS-340W



Miami, FL USA – info@jademar.com

T: 305.640.0465 – F: 305.640.0468



WWW.JADEMAR.COM

Documents / Resources



[JADEMAR JRHBS Series High Output and High Ambient Round High Bay](#) [pdf] Instruction Manual

JRHBS Series High Output and High Ambient Round High Bay, JRHBS Series, JRHBS Series Output and High Ambient Round High Bay, High Output and High Ambient Round High Bay, Output and High Ambient Round High Bay, Output Ambient Round High Bay, High Ambient Round High Bay, Ambient Round High Bay, Ambient High Bay, Round High Bay, High Bay

References

- [Jademar Lighting](#) Manufacturers of Energy Efficient Lighting Fixtures