

JADEMAR LIGHTING JACK, JACK'S Series Architectural Curve Lighting System



JADEMAR LIGHTING JACL, JACLS Series Architectural Curve Lighting System Installation Guide

[Home](#) » [JADEMAR LIGHTING](#) » JADEMAR LIGHTING JACL, JACLS Series Architectural Curve Lighting System Installation Guide 

Contents

- [1 JADEMAR LIGHTING JACL, JACLS Series Architectural Curve Lighting System](#)
- [2 Product Components](#)
- [3 Profiles interconnection](#)
- [4 Installation of profile](#)
- [5 Installation of lighting source \(If field cut and made\)](#)
- [6 Installation of diffuser](#)
- [7 Trimless recessed mount installation](#)
- [8 Documents / Resources](#)
 - [8.1 References](#)

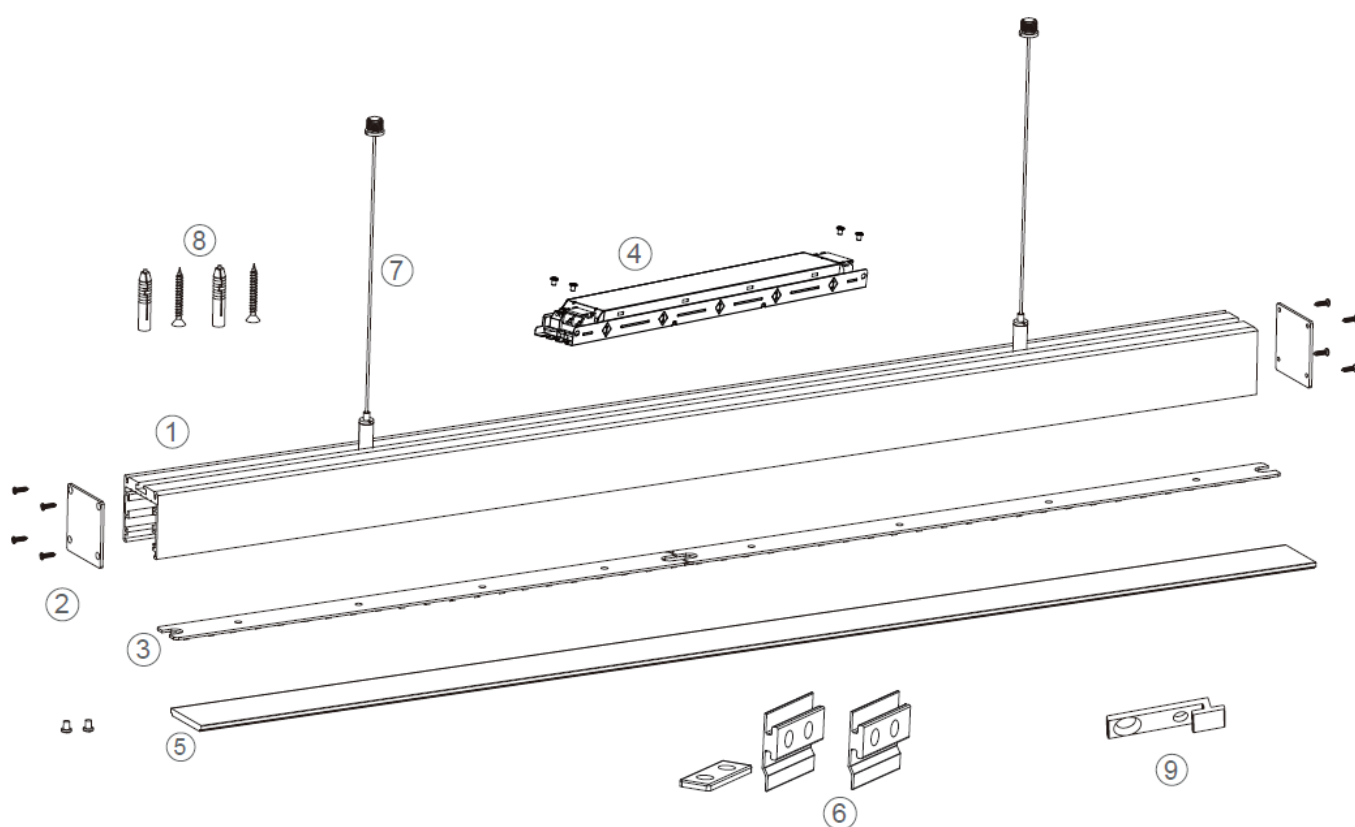


JADEMAR LIGHTING JACL, JACLS Series Architectural Curve Lighting System



Product Components

Straight linear



Main components

1. Profile
2. End cap
3. Rigid module
4. Power supply

5. Diffuser

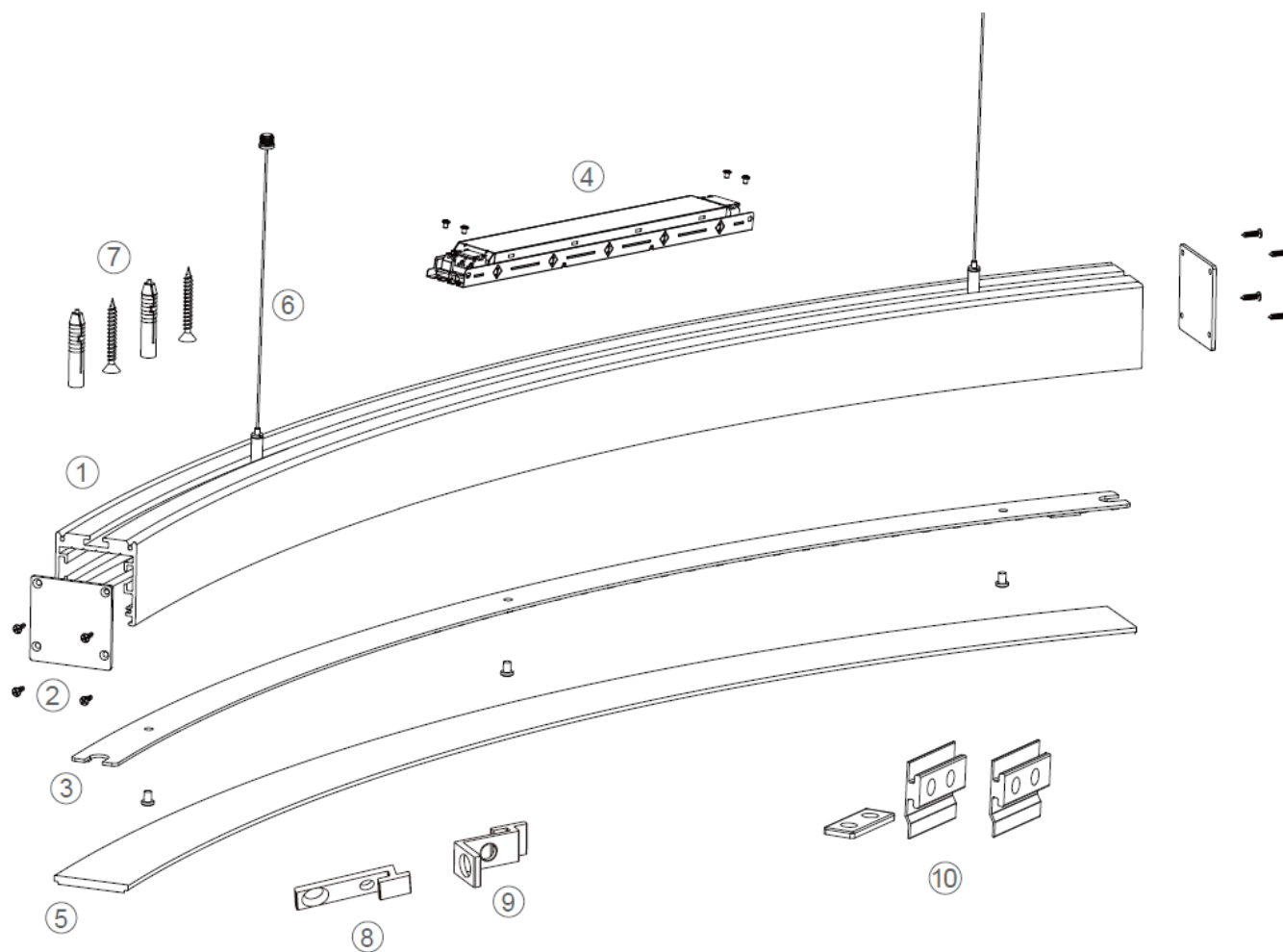
Connectors

6. EX-26

Installation accessories

7. Pendant cable
8. Surface mounted screws
9. Surface mounted accessories (lighting downward))

Curved linear



Main components

1. Profile
2. End cap
3. Rigid module
4. Power supply
5. **Diffuser**

Installation accessories

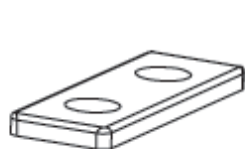
6. Pendant cable
7. Surface mounted screws
8. Surface mounted accessories (lighting downward)
9. Surface mounted accessories (Lighting Inward/ Lighting Outward)

Connectors

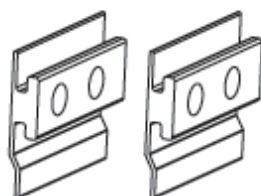
10. EX-26

Profiles interconnection

Accessory model

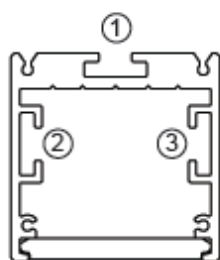


Connectors(EX-26)

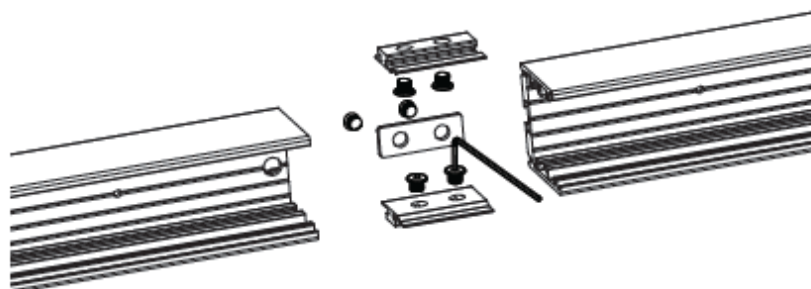


Flat-headed screw

Interconnecting Parts

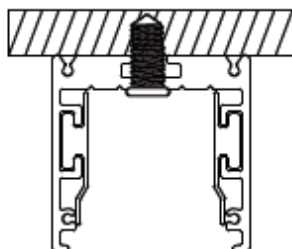


Profile connecting points -
① Back ②③ Side

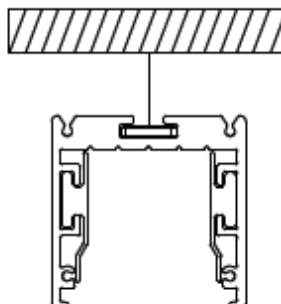


Installation

Surface mounted - ②③ are connect points

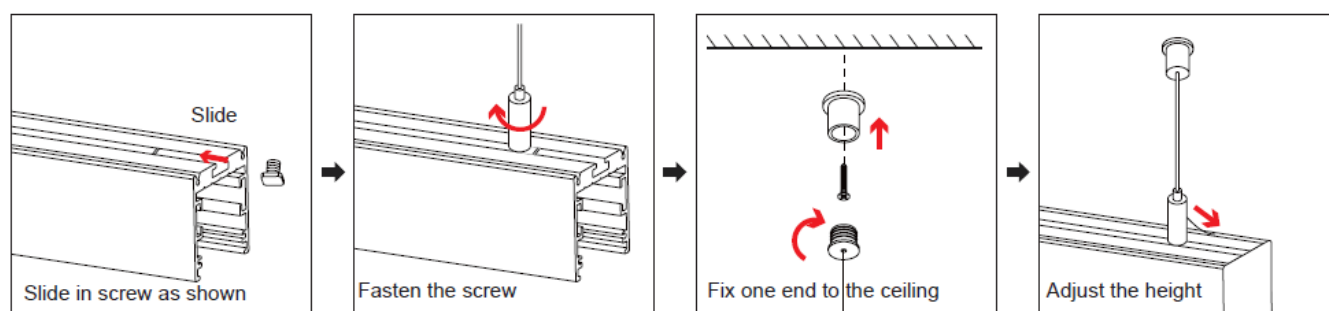


Pendant ①②③ are connect points



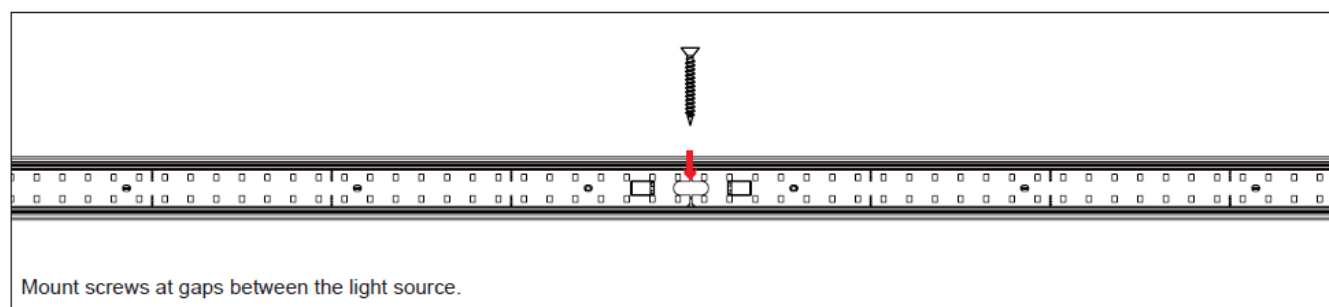
Installation of profile

Pendant



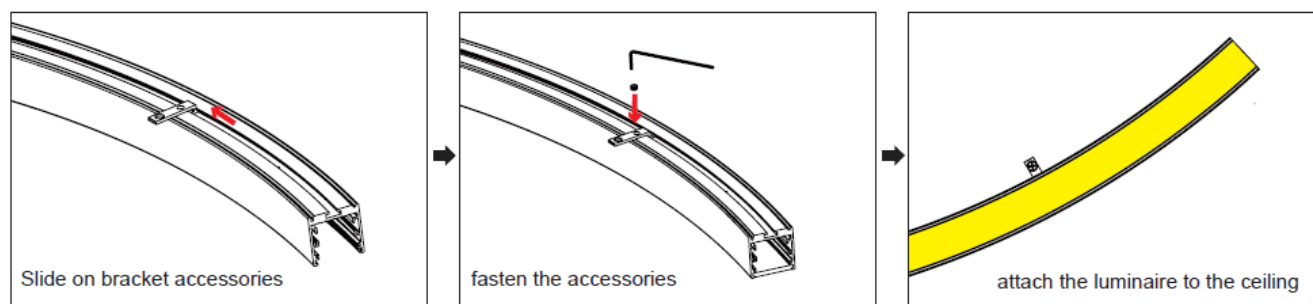
Surface mounted

Option 1

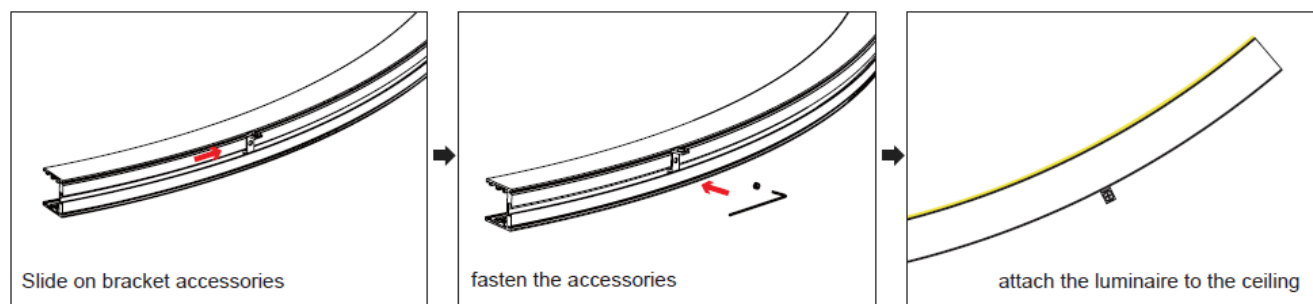


Option 2

Lighting downward



Lighting inward/ lighting outward



Installation of lighting source (If field cut and made)

Lighting source model



Flexible strip



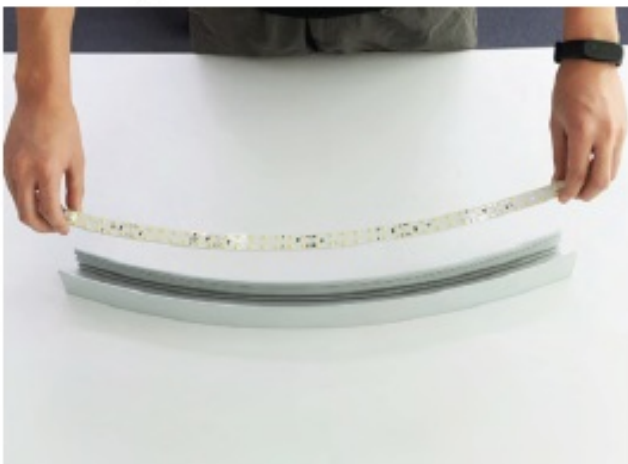
rigid module

Installation of flexible strip



Pull the wire out of the hole, and slowly tear off the 3M adhesive from the back of it properly according to the length needed

Installation of rigid module



Select the matching rigid module



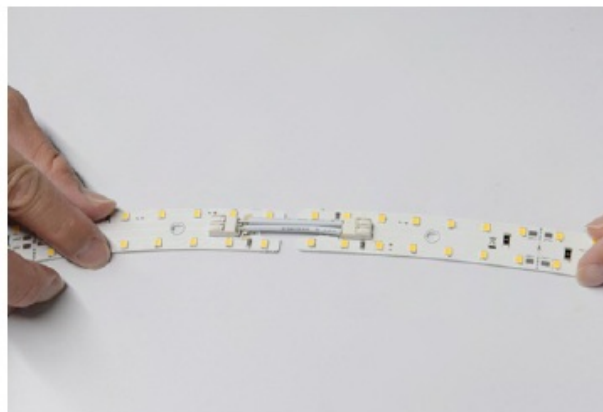
Align the mounting holes and fasten with the screws

Interconnection of light source (If field cut and made)

Rigid module



Insert the single-core cable into the WAGO connector



Flexible strip



Align the LED strips and solder. Always note the positive and negative poles and connect correctly.

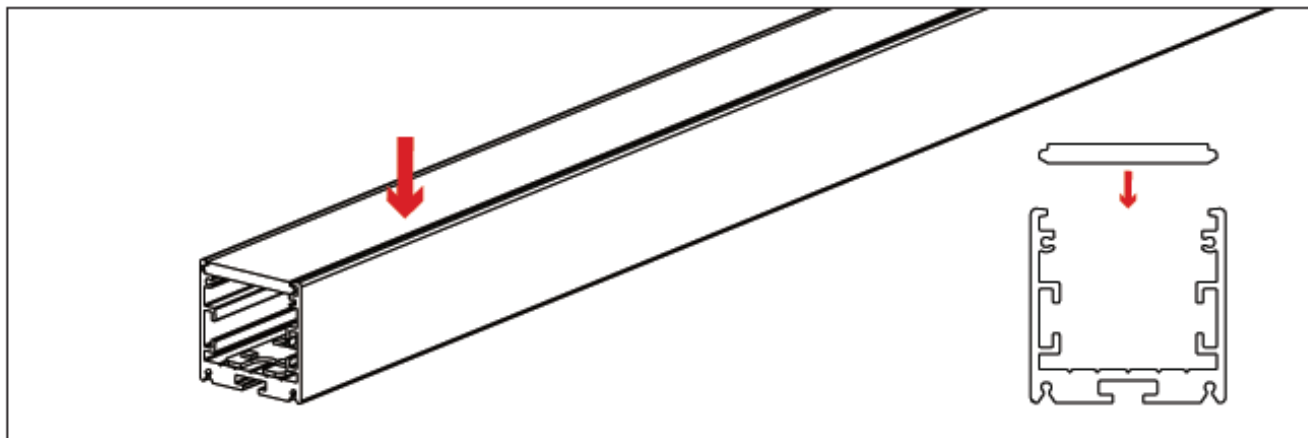
Rigid module and flexible strip



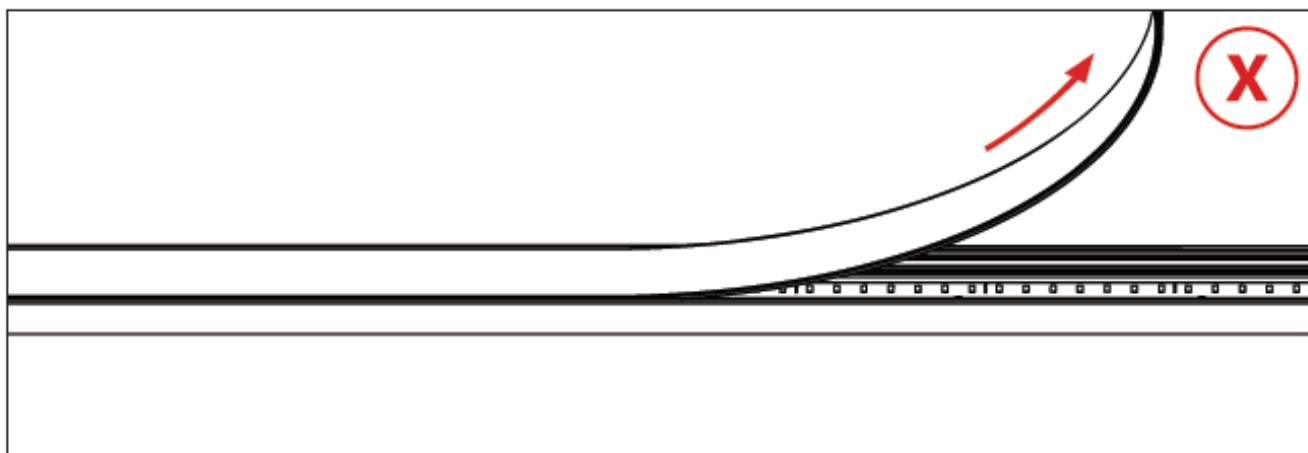
Insert the single-core cable into the WAGO connector and solder.

Installation of diffuser

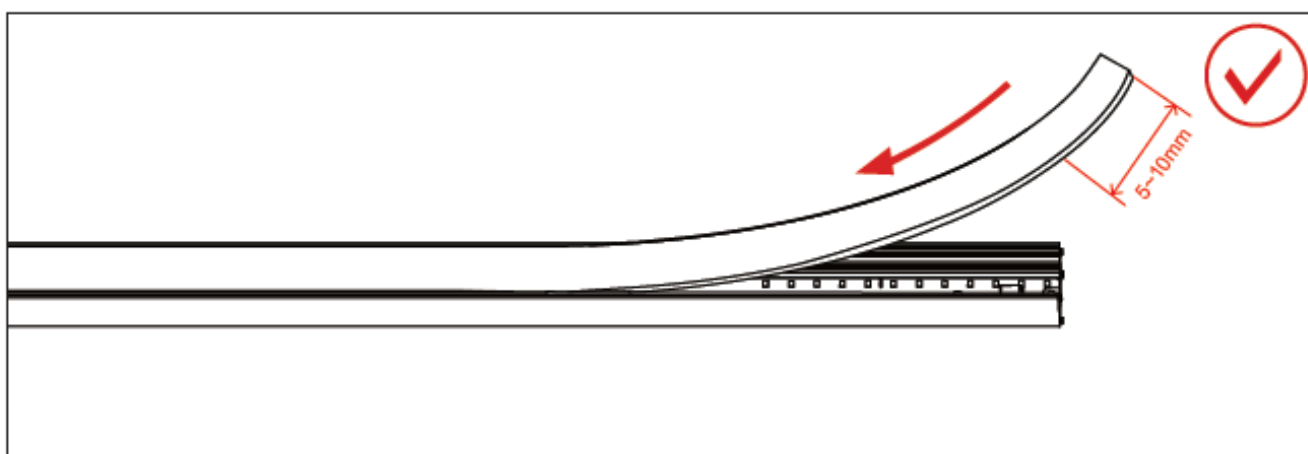
Note the correct diffuser top and bottom.



Do not stretch the diffuser to prevent gaps at the ends due to material stretching or shrinking.



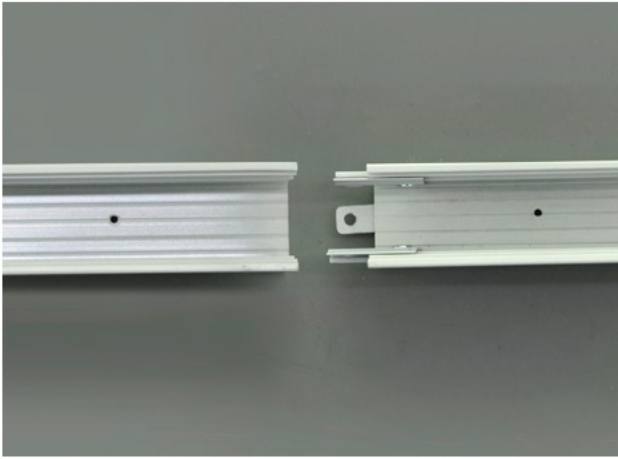
Slowly slide diffuser into the profile.



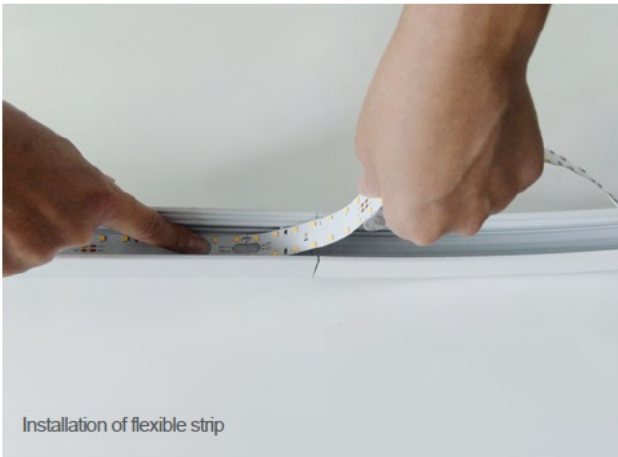
Surface mounted installation

1. Install the 24VDC circuit in the ceiling or wall as needed for luminaire(s) location.
2. Interconnect all the profile components for desired design and fasten the end cap to the profile with screws.

1. Install the 24VDC circuit in the ceiling or wall as needed for luminaire(s) location.



2. Interconnect all the profile components for desired design and fasten the end cap to the profile with screws



3. Mount the light source into the profile per installation details above.
4. Determine the drilling position of profile on the ceiling, and mark with a marking pen.

3. Mount the light source into the profile per installation details above.

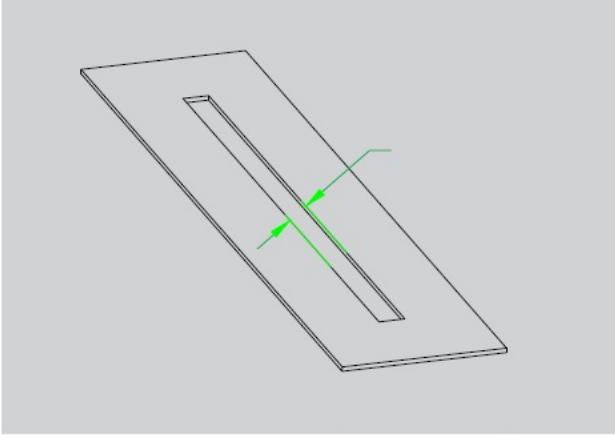
4. Determine the drilling position of profile on the ceiling, and mark with a marking pen



Trimless recessed mount installation

1. Using the actual profile section to be installed, trace the outside dimension of the profile onto the ceiling or wall where the luminaire will be installed. This will be the cut guide for the installation rough opening.
Make the continuous cut into ceiling or wall material to accommodate profile.
2. Install the 24VDC circuit in the ceiling or wall as needed for luminaire(s) location.

3. Interconnect all the profile components for desired design and fasten the end cap to the profile with screws.

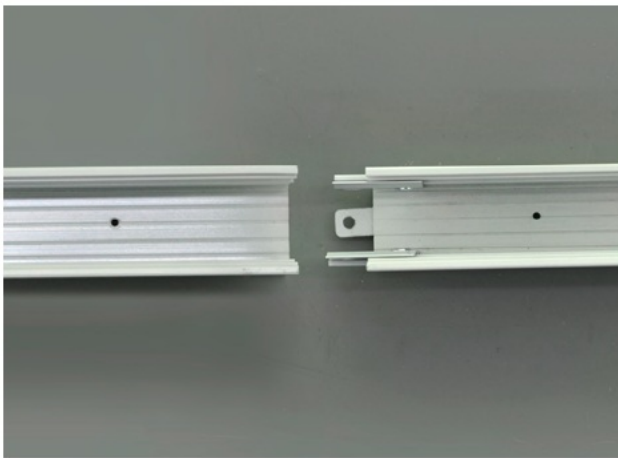


1. Using the actual profile section to be installed, trace the outside dimension of the profile onto the ceiling or wall where the luminaire will be installed. This will be the cut guide for the installation rough opening.

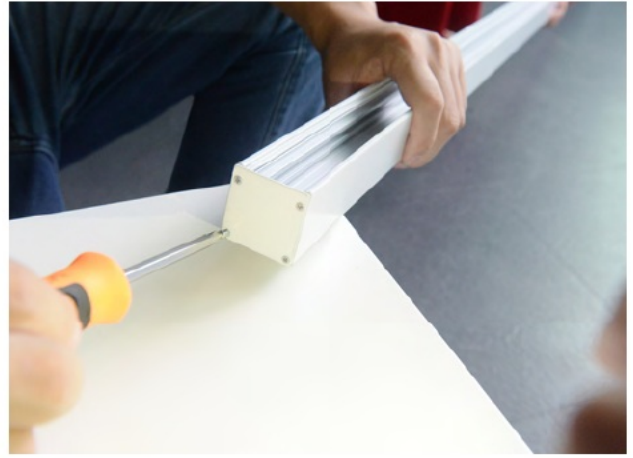
Make the continuous cut into ceiling or wall material to accommodate profile.



2. Install the 24VDC circuit in the ceiling or wall as needed for luminaire(s) location.

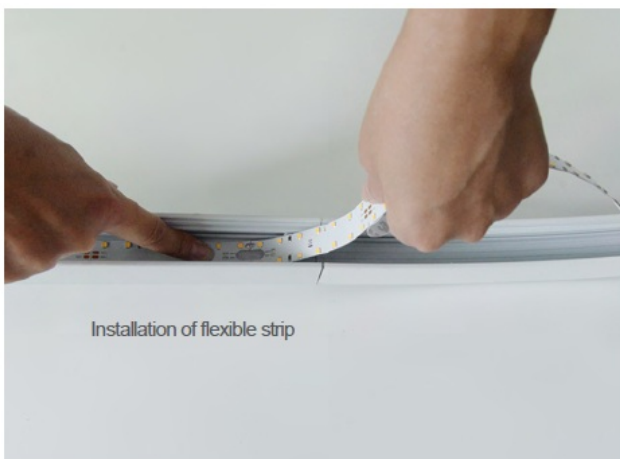


3. Interconnect all the profile components for desired design and fasten the end cap to the profile with screws

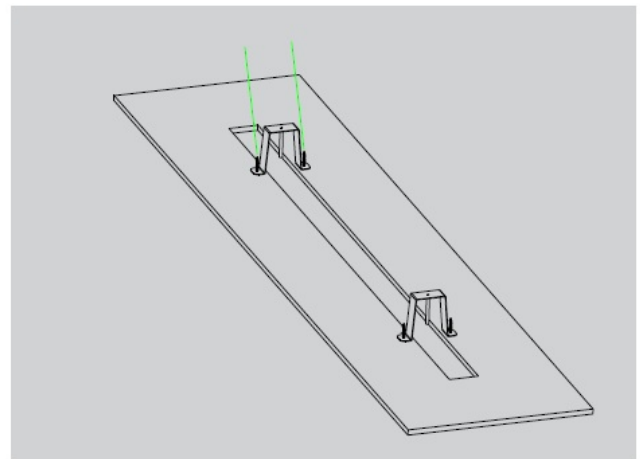


4. Mount the light source into the profile per installation details above.
5. Mount the Recessed Buckle Brackets (part RE-13) into the rough opening and secure with screws or other anchors as needed.

Install recessed buckle brackets at intervals sufficient to support each profile component section.



4. Mount the light source into the profile per installation details above.



5. Mount the Recessed Buckle Brackets (part RE-13) into the rough opening and secure with screws or other anchors as needed. Install recessed buckle brackets at intervals sufficient to support each profile component section.

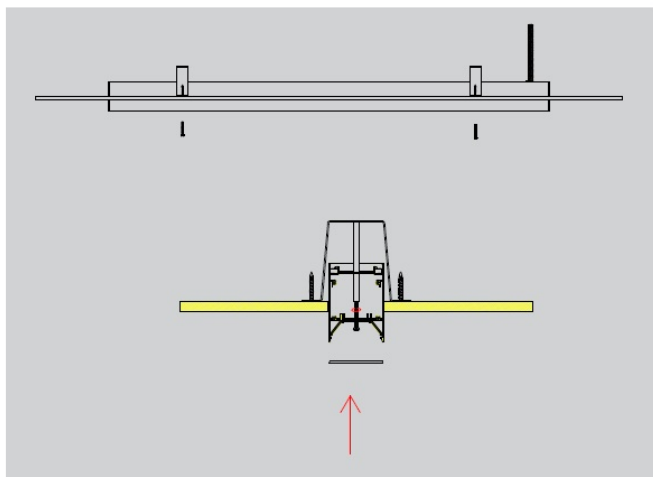
6. Attach power to the luminaire and power on to test.

Mount the profile section(s) into the recess buckle brackets in the rough opening.

Install the diffuser per installation details above.

Finish the ceiling or wall surface to the edge of the profile.

7. Finished



6. Attach power to the luminaire and power on to test.

7. Finished


Quotations: quotes@jademar.com

To place an order: orders@jademar.com

Tel: (305) 640.0465 | Fax: (305) 640.0468

WWW.JADEMAR.COM

Documents / Resources

	<p>JADEMAR LIGHTING JACL, JACLS Series Architectural Curve Lighting System [pdf] Instal lation Guide</p> <p>10, 11, 12, 13, 99, 1100, 2266, JACL JACLS Series Architectural Curve Lighting System, JACL Series Architectural Curve Lighting System, JACLS Series Architectural Curve Lighting System, Architectural Curve Lighting System, Architectural Curve Lighting, Curve Lighting System, Lighti ng System, Curve Lighting, Lighting, Curve</p>
---	--

References

- [User Manual](#)

Manuals+ Privacy Policy

This website is an independent publication and is neither affiliated with nor endorsed by any of the trademark owners. The "Bluetooth®" word mark and logos are registered trademarks owned by Bluetooth SIG, Inc. The "Wi-Fi®" word mark and logos are registered trademarks owned by the Wi-Fi Alliance. Any use of these marks on this website does not imply any affiliation with or endorsement.