



Jada Back to the Future RC Time Machine User Manual

[Home](#) » [Jada](#) » Jada Back to the Future RC Time Machine User Manual 

Contents

- 1 Jada Back to the Future RC Time Machine
- 2 Product Information
- 3 Product Usage Instructions
- 4 FCC WARNING
- 5 CHARGING YOUR VEHICLE
- 6 TURBO BOOST FEATURE
- 7 CONSUMER INFORMATION
- 8 SAFETY TIPS
- 9 INSTALLING BATTERIES INTO CONTROLLER
- 10 CLEANING INSTRUCTION
- 11 INSTRUCTION FOR DISPOSAL OF WASTE
- 12 TROUBLESHOOTING
- 13 Documents / Resources



Jada Back to the Future RC Time Machine



Product Information

The product is a 1:16 RC (Remote Control) vehicle with a size of 420mm x 297mm. It is manufactured by Jada Toys, Inc. The product comes with a 30-Day Limited Warranty for customers in the United States and Canada.

Product Usage Instructions

1. If you encounter any problems or need customer support, you can contact Jada Toys through the following methods:
 - **Email:** cs@jadatoys.com
 - **Phone:** 1-800-679-5232
2. If you experience a defect covered under the warranty, follow these steps:
 - Contact Jada Toys via phone or email, providing your name, address, telephone number, copy of dated sales receipt, and a brief explanation of the defect.
 - Jada Toys will determine whether repair or replacement is necessary and arrange for the return shipment.
 - Pack the defective part or unit securely for return.
 - Repair/replacement and return shipment will be free of charge.
3. Note that the warranty does not cover damage resulting from unauthorized modification, accident, misuse, or abuse.
4. Make sure to retain the dated sales receipt as it may be required to claim warranty coverage.
5. Jada Toys' liability for defects in material and workmanship is limited to repair or replacement.
6. The warranty does not cover incidental, consequential, or contingent damages, except in states where such exclusions or limitations are prohibited.
7. Expect some delay in customer service response during January following the holiday season.
8. For customers in Canada, the product complies with IC RSS-102 radiation exposure limits set forth for an uncontrolled environment.
9. For customers in the United States, the device complies with part 15 of the FCC Rules and must not cause harmful interference. Consult a professional for assistance with any changes or modifications to the equipment.

Important!

- Jada Toys, Inc. warrants to the original consumer purchaser that this product will be free of defects in material

and workmanship for thirty (30) days from the date of purchase. Jada Toys will repair or replace the product, at our sole discretion, in the event of such a defect within the warranty period.

- In the event of a defect covered under this warranty, first, call the phone numbers listed below. Many problems can be solved in this manner. If necessary, you may be asked to return the product for a replacement or refund at the place of purchase (please refer to the retailer's return policy) or you may be instructed to return the product (postage paid and insured by the consumer) to Jada Toys – address to be provided upon contacting us via phone/email. Include your name, address, telephone number, copy of dated sales receipt, and a brief explanation of the defect. Repair/replacement and return shipment will be free of charge. Please return the defective part or unit, packed securely. This warranty does not cover damage resulting from unauthorized modification, accident, misuse, or abuse. If the product is returned without a dated sales receipt, the product may be excluded from coverage under this warranty. Jada Toy's liability for defects in material and workmanship under this warranty shall be limited to repair or replacement, at our sole discretion, and in no event shall we be responsible for incidental, consequential, or contingent damages (except in those states that do not allow this exclusion or limitation). This warranty is exclusive, and is made in lieu of any express or implied warranty. Valid only in U.S.A. and Canada. This warranty gives you specific legal rights and you may have other rights, which may vary from state to state. Some states do not allow the exclusion of incidental or consequential damages, so the above exclusions or limitations may not apply to you.
- Expect some delay in January following the holiday season.
- Please be patient and keep trying the toll-free number.

Industry Canada Warning:

This device contains licence-exempt transmitter(s)/receiver(s) that comply with Innovation, Science and Economic Development Canada's licence-exempt RSS(s). Operation is subject to the following two conditions: 1. This device may not cause interference. 2. This device must accept any interference, including interference that may cause undesired operation of the device. Under Industry Canada regulations, this radio transmitter may only operate using an antenna of a type and maximum (or lesser) gain approved for the transmitter by Industry Canada. To reduce potential radio interference to other users, the antenna type and its gain should be so chosen that the equivalent isotropically radiated power (e.i.r.p.) is not more than that necessary for successful communication.

This equipment complies with IC RSS-102 radiation exposure limits set forth for an uncontrolled environment.

FCC WARNING

This device complies with part 15 of the FCC Rules. Operation is subject to the following two conditions:

1. This device may not cause harmful interference, and
2. this device must accept any interference received, including interference that may cause undesired operation.

Warning: Any changes or modifications not expressly approved by the party responsible for compliance could void the user's authority to operate this equipment.

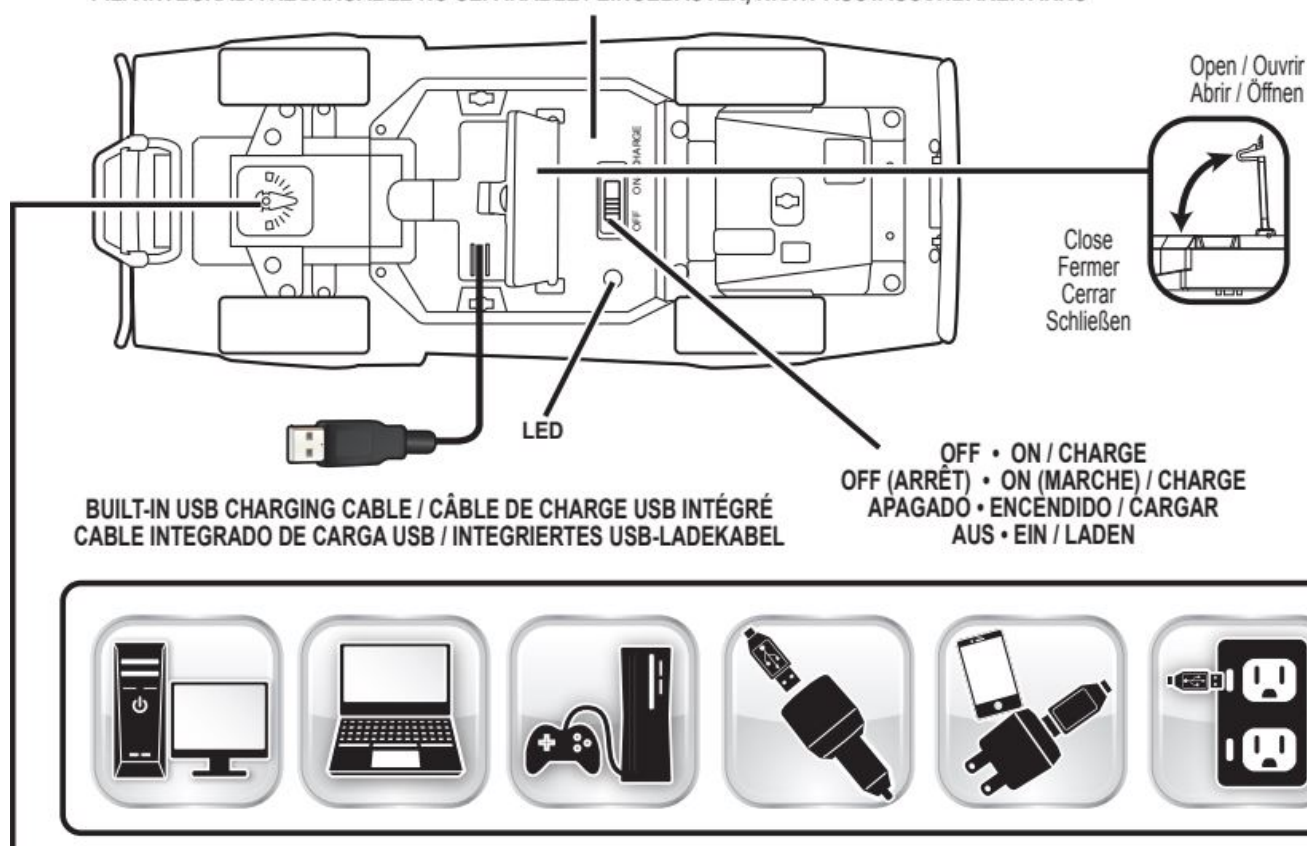
NOTE: This equipment has been tested and found to comply with the limits for a Class B digital device, pursuant to Part 15 of the FCC Rules. These limits are designed to provide reasonable protection against harmful interference in a residential installation. This equipment generates, uses, and can radiate radio frequency energy and, if not installed and used in accordance with the instructions, may cause harmful interference to radio communications. However, there is no guarantee that interference will not occur in a particular installation. If this equipment does cause harmful interference to radio or television reception, which can be determined by turning the equipment off and on, the user is encouraged to try to correct the interference by one or more of the following measures:

- Reorient or relocate the receiving antenna.
- Increase the separation between the equipment and the receiver.
- Connect the equipment to an outlet on a circuit different from that to which the receiver is connected.
- Consult an experienced radio/TV technician for help.
- Electrical products should not be disposed of with household waste. Please recycle where facilities exist.

Check with your local authority or retailer for recycling advice. Products with batteries should not be disposed of with household waste. Please recycle where facilities exist. Check with your local authority or retailer for recycling advice.

CHARGING YOUR VEHICLE

BUILT-IN NON REMOVABLE RECHARGEABLE BATTERY / BATTERIE RECHARGEABLE NON-AMOVIBLE INTÉGRÉE
PILA INTEGRADA RECARGABLE NO SEPARABLE / EINGEBAUTER, NICHT-AUSTAUSCHBARER AKKU



1. Make sure the switch is in the ON/CHARGE position
2. Open the chassis door and pull out the USB charging cable
3. When plugged into a USB-certified port, the light on the chassis will slowly fade in and out to indicate that the vehicle is charging
4. Once the vehicle is finished charging, the light will stop fading and stay ON
5. Charging times will vary depending on what kind of port it is plugged into

HOW TO PLAY:

1. Turn the vehicle ON, then press any button on the transmitter controller within 15 seconds for pairing.
2. The LED will be blinking for pairing.
3. Once the pairing is successful, the LED on controller will stop blinking and stay on.
4. If pairing is unsuccessful, turn the vehicle OFF and reinstall battery in the controller to try again.

- If your controller LED is blinking or losing brightness, please replace the battery.
- If your vehicle LED is blinking or losing brightness, please turn off and recharge the vehicle battery.
- When playing with multiple vehicles, only pair one controller to one vehicle at a time in order to avoid interference.

TURBO BOOST FEATURE

- Press down the Turbo Button to increase the speed of the vehicle
- The light on the controller will flash quickly to indicate that the Turbo Boost is in use
- Release the Turbo Button to resume back to normal speed
- The product uses 2.4GHz remote control technology.

INSTRUCTIONS SHEET MUST BE RETAINED SINCE IT CONTAINS IMPORTANT INFORMATION.

These operating, installation, and safety instructions are integral parts of the product.

IMPORTANT:

- Please read all “CONSUMER INFORMATION” before operating this toy vehicle.
- ADULT SUPERVISION REQUIRED.
- Note to Adults: to ensure that the child’s play is both safe and fun, please review all operating instructions and safety tips in the CONSUMER INFORMATION section with your child.

CONSUMER INFORMATION

CONTENTS:

- 1 x Vehicle With Built-in Rechargeable Battery
 - 1 x Transmitter Controller, 2 x AAA Batteries

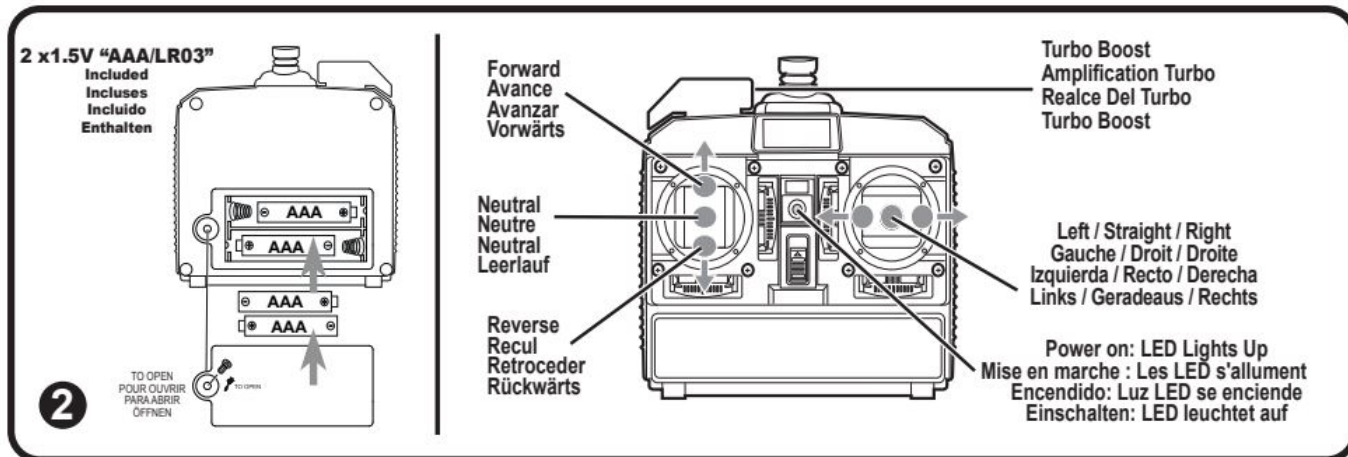
SAFETY TIPS

- Toy surface may become hot and cause burns if the electronics get wet. DO NOT
- OPERATE this vehicle near/in/through water, snow, sand, grass or any wet or muddy surfaces.
- Never play this vehicle on streets! The streets are for real cars!
- Do not pick up vehicle while in motion.
- Always place the car gently on the floor by hand. Never throw the car onto the floor.
- Avoid collisions with walls, any hard objects, or human/animal bodies.
- Keep fingers, hair and loose clothing away from tires and wheel hubs.
- To avoid accidental operation, remove all batteries from controller when not in use.
- Do not connect this toy with other power supplies.
- Do not insert any wire into electrical outlets.
- Be sure to rest your vehicle for at least 5 minutes after every 15 minutes of operations.
- Stay clear of obstructions and hazards to avoid injury and damage.
- YOUR NEW R/C IS DESIGNED WITH A BUILT-IN RECHARGEABLE BATTERY.
- CONTROLLER IS DESIGNED TO WORK WITH 2 AAA BATTERIES.

- **WARNING:** Rechargeable battery is not replaceable.

INSTALLING BATTERIES INTO CONTROLLER

(See Diagram 2)



Requires 2 (two) "AAA" batteries.

1. Using a screwdriver (not included), remove the battery compartment door.
2. Remove and properly dispose of the used batteries (if any).
3. Insert the 2 "AAA" batteries, with polarity (+/-) as shown inside battery compartment.
4. Replace the battery compartment door and use a screwdriver to lock the compartment door.

BATTERY SAFETY INFORMATION (CONTROLLER)

- Do not mix alkaline, standard (carbon-zinc), or rechargeable batteries.
- Remove controller batteries if R/C will not be used for a long period of time to prevent possible battery leakage.
- Dispose of batteries safely. Do not dispose of batteries (or products containing non-replaceable batteries) in fire, as batteries may explode or leak.
- Rechargeable batteries are to be removed from the toy before being charged.
- Rechargeable batteries are to be charged by adult only.
- Non-rechargeable batteries are not to be recharged.
- Different types of batteries or new and used batteries are not to be mixed.
- Batteries are to be inserted with the correct polarity.
- Exhausted batteries are to be removed from the toy.
- The supply terminals are not to be short-circuited.

CAUTION: BUILT-IN BATTERY SAFETY INFORMATION

- Carefully read the instruction guide and use the batteries correctly.
- The vehicle includes a non-replaceable battery. Do not open, disassemble or alter the vehicle in anyway.
- Built-in USB adapter is permanently attached to the vehicle. To protect your vehicle, only connect to USB certified port.
- Adult supervision is required when charging the vehicle.

- Never charge or store the vehicle in extremely hot or cold temperatures (about 104°F/40°C or below 14°F/-10°C) or beyond 60±25% related humidity. Don't charge or store the vehicle toy inside a parked car under the sun.
- Keep USB cable enclosed inside the chassis box after charging or during playing. DO NOT over extend or detach the cable.
- Charge battery in isolated area. Keep away from flammable materials.
- Do not expose to direct sunlight.
- Do not recharge the toy if it is hot. Allow it to cool before recharge.
- Do not drop or subject to strong impacts.
- Do not allow the batteries to get wet.
- In the unlikely event of leakage or explosion use sand or a chemical fire extinguisher for the battery.
- Rechargeable batteries are only to be charged under adult supervision.
- Routine examination for damage to the plug, enclosure and other parts. In the event of any damage, the toy must not be used with USB port until the damage has been repaired.
- This toy is not intended for children under 3 years old.
- Power supply shall be supplied at 5V 1A.
- The power supply is not a toy.
- Misuse of the power supply can cause electric shock.
- The toy shall only be used with a power supply for toys.
- The toy is only to be connected to Class II equipment bearing the following symbol

QUICK TIPS

- The included rechargeable battery is not charged prior to shipment and must be charged before the first use.
- When your vehicle starts to lose power, it may lose function or performance. It's time to recharge the batteries. Your vehicle's running time may change depending on your driving style.
- Radio interference can make your vehicle run abnormally. Interference can be caused by other R/C vehicles running on the same frequency; electrical wires, large buildings; or CB radios. Try to stay away from these!
- Point your transmitter controller antenna up – not down toward your vehicle. If your vehicle gets too far away, it won't work properly.
- Don't store your vehicle near heat or in direct sunlight. Always turn the switch to the off position when not in play

CLEANING INSTRUCTION

- To clean, wipe any dirt from the toy. Disconnect from power supply before wiping the toy with a moist tissue.
- DO NOT IMMERSE IN WATER and DO NOT CLEAN WITH ANY CHEMICALS. Let fully dry before use.

INSTRUCTION FOR DISPOSAL OF WASTE

- Your batteries and electronic toys should be recycled or disposed per your local waste management guidelines.
- Contact your local waste management officials for information regarding the environmentally sound recycling and disposal of batteries and electronic toys.

FEATURES

- Up to 20 minutes playtime
- 90 minutes quick charge
- Full function RC
- Custom rims and graphics
- Turbo boost

TROUBLESHOOTING

| PROBLEM | SOLUTION |
|--|---|
| Vehicle does not respond to controls. | <div>1. Transmitter controller battery is drained. Replace the controller battery.</div> <div>2. Vehicle is out of range. Bring controller closer to the vehicle.</div> <div>3. Interference from surrounding electrical machinery. Bring to a wide open space.</div> |
| Vehicle does not drive straight. | Adjust the steering dial underneath the front axle, left or right, until the wheels point straight forward. |
| Vehicle does not move | Stop operation, switch off the power and rest your vehicle a few minutes. |
| The vehicle does not respond properly | The major reason is out of range. Bring the controller closer to the vehicle. If problem still happens, remove the controller batteries and replace them with new batteries and restart (ON/OFF) the vehicle. |
| The transmitter controller does not work | The controller light is off, its battery is drained. Replace the controller battery. |

- We reserve the right to improve or amend product specifications. Colors may vary.
- Jada oval mark is a registered trademark of Jada Toys, Inc.
- Hereby, JADA TOYS CO. LTD., declares that the radio equipment type #85130 is in compliance with Directive 2014/53/EU
- 2023 JADA TOYS, INC. CITY OF INDUSTRY, CA 91748, USA
- **RF frequency band:** 2411-2472 MHz
- **Transmitter power:** -6.24dBm

Documents / Resources



[Jada Back to the Future RC Time Machine](#) [pdf] User Manual

JT24TX99046, PWYJT24TX99046, jt24tx99046, Back to the Future RC Time Machine, Back to the Future, RC Time Machine, Time Machine