

j5create
j5create
ScreenCast
JVAW62 USB-C
Wireless
Display HDMI
Extender



j5create ScreenCast JVAW62 USB-C Wireless Display HDMI Extender Installation Guide

[Home](#) » [j5Create](#) » j5create ScreenCast JVAW62 USB-C Wireless Display HDMI Extender Installation Guide 

Contents

- [1 j5create ScreenCast JVAW62 USB-C Wireless Display HDMI Extender](#)
- [2 Product Usage Instructions](#)
- [3 How to mirror](#)
- [4 Adhesive Strip Instructions](#)
- [5 FCC STATEMENT](#)
- [6 Limited Warranty](#)
- [7 TECHNICAL SUPPORT](#)
- [8 FAQ:](#)
- [9 Documents / Resources](#)
 - [9.1 References](#)
- [10 Related Posts](#)

j5create

j5create ScreenCast JVAW62 USB-C Wireless Display HDMI Extender



Specifications:

- Product Model: JVAW62
- Language Options: English, Deutsch, Italiano, Nederlands
- Connector Type: USBTM Type-A

Product Usage Instructions

How to Pair the JVAW62 TX with the Receiver:

1. Turn on pairing mode for the receiver by pressing the reset button (or inserting a pin to press) for 2 seconds on the JVAW62 wireless display receiver.
2. Release the button when the screen shows “Release the button to pair with ScreenCast.” Make sure your receiver is upgraded to the latest version.
3. Plug the JVAW62 TX into the laptop or mobile device to provide power.
4. Press the JVAW62 TX button to complete pairing when the screen shows “Ready to pair.”

How to Mirror:

To stop or restart mirroring, press the JVAW62 TX button.

Positioning for Optimal Streaming Experience:

1. Choose a flat surface to attach the USBTM connector.
2. Ensure the area is clean before attaching.
3. Remove the liner from the double-sided adhesive strip.
4. Press adhesive to the bottom of the USBTM connector.

5. Remove the other liner and firmly press the USBTM connector to the desired location for 30 seconds.

How to mirror

1. Simply plug into a laptop or mobile device

- Plug the JVAW62 TX into a USB-C® port on a laptop or mobile device. Wait a few seconds until the flashing light on the JVAW62 TX stops, and it will start mirroring automatically. If the JVAW62 TX flashes for more than 20 seconds, unplug it and then plug it back in. If it flashes for more than 20 seconds again, it will need to be paired to the JVAW62 RX*.
- See the section titled “How to pair the JVAW62 TX with the receiver” below for instructions on how to pair the TX with the RX.

2.



Stop and restart mirroring

Press the JVAW62 TX button to stop or restart mirroring.



Note:

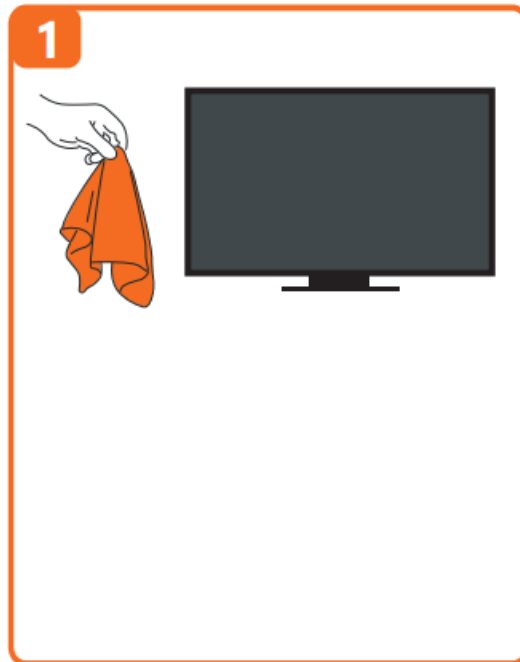
The JVAW62 TX supports mirroring for all laptops and mobile devices running Windows®, macOS®, iPadOS®, and Android™ operating systems. The USB-C® port on the device must also support DP™ output.

(Optional) Position the ScreenCast for an Optimal Streaming Experience

The USB™ Type-A connector can be attached to your TV with the double-sided adhesive strip that is included. The strip is for single-use and can be removed. The USB™ Type-A connector is equipped with a Wi-Fi® module, antenna, and power supply; therefore, we DO NOT recommend placing the USB™ Type-A connector behind the TV or inside a TV cabinet. Doing so may cause a weak signal or loss of signal.

Adhesive Strip Instructions

1.

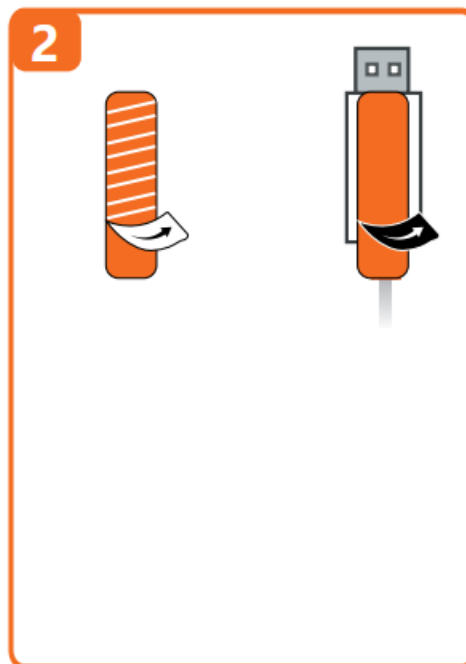


Choose a flat surface to attach the USB™connector.

- Make sure the area is clean before attaching.

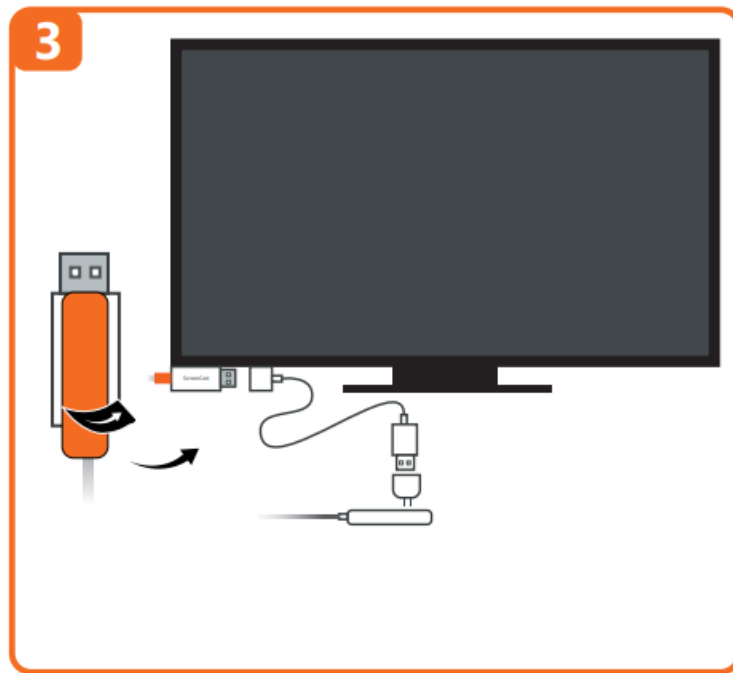
2. Remove the liner from the double-sided adhesive strip.

- Press adhesive to the bottom of the USB™ connector.



3. Remove the other liner.

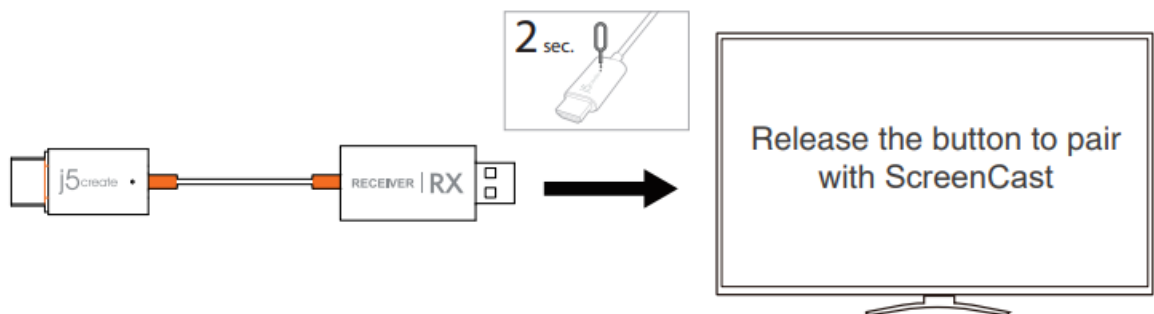
- Firmly press the USB™ connector to the desired location for 30 seconds.



(Troubleshooting) How to pair the JVAW62 TX with the receiver

1. Turn on pairing mode for the receiver

- Press the reset button (or insert the pin to press) for 2 seconds on the JVAW62 wireless display receiver. Release the button when the screen shows “Release the button to pair with ScreenCast”. Please make sure your receiver has been upgraded to the latest version.
- For instructions on how to upgrade your device please visit <https://j5create.com/screencast/>



2. Press the JVAW62 TX button

- Plug the JVAW62 TX into the laptop or mobile device to provide power.
- Press the JVAW62 TX button to complete pairing when the screen shows “Ready to pair”.



Note:

The reset button on the receiver has 3 functions, which function is performed depends on the duration the button is held down.

1. Simple click: Switch the receiver to 2.4G/ 5 GHz Wi-Fi® mode.
2. Press for 2 seconds: Turns on pairing mode for the JVAW62 TX.
3. Press for 10 seconds: Resets the receiver to default.

FCC STATEMENT

Changes or modifications not expressly approved by the party responsible for compliance could comply with the limits for a Class B digital device, pursuant to Part 15 of the FCC Rules. These limits are designed to provide reasonable protection against harmful interference in a residential installation. This equipment generates uses and can radiate radio frequency energy and, if not installed and used in accordance with the instructions, may cause harmful interference to radio communications. However, there is no guarantee that interference will not occur in a particular installation. If this equipment does cause harmful interference to radio or television reception, which can be determined by turning the equipment off and on, the user is encouraged to try to correct the interference by one or more of the following measures:

- Reorient or relocate the receiving antenna.
- Increase the separation between the equipment and receiver. connected.—Connect the equipment into an outlet on a circuit different from that to which the receiver is
- Consult the dealer or an experienced radio/TV technician for help.

This device complies with part 15 of the FCC Rules. Operation is subject to the following two conditions:

1. This device may not cause harmful interference, and
2. This device must accept any interference received, including interference that may cause undesired operation.

Transmit: SAR statement

This device meets the government's requirements for exposure to radio waves. This device is designed and manufactured not to exceed the emission limits for exposure to radio frequency (RF) energy set by the Federal Communications Commission of the U.S. tested and meets the FC Government. The SAR limit set by the FCC is 1.6W/KC RF exposure guidelines for use with an accessory that contains no metal g. For body-worn operation, this device has been and positions the device a minimum of 0mm from the body. RF exposure compliance with any body-worn accessory that contains metal was not tested and certified. and use of such body-worn 0mm from EUT to body-worn operation.accessory should be avoided. Accessory available in market and must be used to keep use distance

Receive RF Exposure Statement

To maintain compliance with FCC's RF Exposure guidelines, This equipment should be installed and operated with minimum distance of 20cm the radiator your body. This device and its antenna(s) must not be co-located or operation in conjunction with any other antenna or transmitter.

Limited Warranty

j5create offers a limited 2-year warranty. User's wear & tear damage is not included. The user shall call or email j5create customer service with the defect information of the product and obtain a return authorization number. Users are responsible for one-way return freight cost and we will take care of one-way freight back. In order to obtain a return authorization number, users should have the following information handy when calling or emailing the service team:

1. a copy of the original purchase invoice to verify your warranty
2. a product serial number

3. a description of the problem
4. customer's name, address, and telephone number

j5create does not warrant that the operation of the product will be uninterrupted or error-free. j5create is not responsible for damage arising from failure to follow instructions relating to the product's use. This warranty does not apply to: (a) consumable parts, unless damage has occurred due to a defect in materials or workmanship; (b) cosmetic damage, including but not limited to scratches, dents, and broken plastic on ports; (c) damage caused by use with non-j5create products; (d) damage caused by natural disasters; (e) damage caused by human misuse (lost, accident, abuse, misuse or other external causes); (f) damage caused by operating the product outside the permitted or intended uses described by j5create; (g) damage caused by service (including upgrades and expansions) performed by anyone who is not a representative of j5create or a j5create Authorized Service Provider; (h) a product or part that has been modified to alter functionality or capability without the written permission of j5create; or (i) if any j5create serial number on the product has been removed or defaced. If such a situation occurs, j5create will calculate the cost of materials and repair for your reference. This warranty is given by j5create in lieu of any other warranties expressed or implied.

Limitation of Warranty

THIS WARRANTY GIVES YOU SPECIFIC LEGAL RIGHTS, AND YOU MAY HAVE OTHER RIGHTS THAT VARY FROM STATE TO STATE (OR BY COUNTRY OR PROVINCE). OTHER THAN AS PERMITTED BY LAW, J5CREATE DOES NOT EXCLUDE, LIMIT OR SUSPEND OTHER RIGHTS YOU MAY HAVE, INCLUDING THOSE THAT MAY ARISE FROM THE NONCONFORMITY OF A SALES CONTRACT. FOR A FULL UNDERSTANDING OF YOUR RIGHTS YOU SHOULD CONSULT THE LAWS OF YOUR COUNTRY, PROVINCE OR STATE. TO THE EXTENT NOT PROHIBITED BY LAW IN YOUR STATE, PROVINCE, JURISDICTION OR COUNTRY, THIS WARRANTY AND THE REMEDIES SET FORTH ARE

EXCLUSIVE AND IN LIEU OF ALL OTHER WARRANTIES, REMEDIES AND CONDITIONS, WHETHER ORAL, WRITTEN, STATUTORY, EXPRESS OR IMPLIED. J5CREATE'S RESPONSIBILITY FOR MALFUNCTIONS AND DEFECTS IN HARDWARE AND/OR SOFTWARE IS LIMITED TO REPAIR OR REPLACEMENT AS SET FORTH IN THIS WARRANTY. J5CREATE'S LIABILITY DOES NOT EXTEND BEYOND THE REMEDIES PROVIDED FOR IN THIS LIMITED WARRANTY, AND J5CREATE DOES NOT ACCEPT LIABILITY FOR CONSEQUENTIAL OR INCIDENTAL DAMAGES, FOR THIRD-PARTY CLAIMS AGAINST YOU FOR DAMAGES, FOR PRODUCTS NOT BEING AVAILABLE FOR USE, OR FOR LOST OR DAMAGED DATA OR SOFTWARE. J5CREATE DOES NOT WARRANT THAT THE OPERATION OF ANY J5CREATE PRODUCT WILL BE UNINTERRUPTED OR ERROR FREE.

J5CREATE'S LIABILITY IN ANY SITUATION WILL BE NO MORE THAN THE AMOUNT YOU PAID FOR THE SPECIFIC PRODUCT THAT IS THE SUBJECT OF A CLAIM. THIS IS THE MAXIMUM AMOUNT FOR WHICH WE ARE RESPONSIBLE. EXCEPT FOR THE EXPRESS WARRANTIES CONTAINED IN THIS WARRANTY AND TO THE EXTENT NOT PROHIBITED BY LAW, J5CREATE DISCLAIMS ALL OTHER WARRANTIES AND CONDITIONS, EXPRESS OR IMPLIED, STATUTORY OR OTHERWISE, INCLUDING WITHOUT LIMITATION, WARRANTIES OF MERCHANTABILITY, MERCHANTABLE QUALITY AND FITNESS FOR A PARTICULAR PURPOSE AND WARRANTIES AND CONDITIONS AGAINST HIDDEN OR LATENT DEFECTS. SOME STATES, PROVINCES, JURISDICTIONS OR COUNTRIES DO NOT ALLOW DISCLAIMERS OF IMPLIED WARRANTIES AND CONDITIONS, SO THIS DISCLAIMER MAY NOT APPLY TO YOU.

TO THE EXTENT SUCH WARRANTIES AND CONDITIONS CANNOT BE DISCLAIMED UNDER THE LAWS OF THE UNITED STATES, CANADA (AND ITS PROVINCES) OR OTHERWISE, J5CREATE LIMITS THE DURATION AND REMEDIES OF SUCH WARRANTIES AND CONDITIONS TO THE DURATION OF THIS EXPRESS LIMITED WARRANTY AND, AT J5CREATE'S OPTION, REPAIR OR REPLACEMENT SERVICES. SOME STATES, PROVINCES, JURISDICTIONS OR COUNTRIES MAY NOT ALLOW LIMITATIONS ON HOW LONG AN IMPLIED WARRANTY OR CONDITION MAY LAST, SO THE LIMITATION DESCRIBED ABOVE MAY NOT APPLY TO YOU.

NO WARRANTIES OR CONDITIONS, WHETHER EXPRESS OR IMPLIED, WILL APPLY AFTER THE LIMITED WARRANTY PERIOD HAS EXPIRED. SOME STATES, PROVINCES, JURISDICTIONS OR COUNTRIES DO NOT ALLOW LIMITATIONS ON HOW LONG AN IMPLIED WARRANTY OR CONDITION LASTS, SO THIS LIMITATION

MAY NOT APPLY TO YOU.

WARRANTY SUPPORT ONLY APPLIES WHEN THE COVERED PRODUCT IS LOCATED WITHIN THE COUNTRY IN WHICH J5CREATE ORIGINALLY SOLD THE SYSTEM, AS REFLECTED IN J5CREATE'S RECORDS. IF YOU NEED SUPPORT FOR THE PRODUCT OUTSIDE OF THE COUNTRY OF ORIGIN (FOR EXAMPLE, WHILE TRAVELING, OR IF THE SYSTEM HAS BEEN RELOCATED TO A NEW COUNTRY), THEN J5CREATE MAY OFFER YOU OTHER SUPPORT OPTIONS FOR AN ADDITIONAL CHARGE.

For more information please visit our website at <http://www.j5create.com>

Copyright© 2024 j5create. All rights reserved. All trade names are registered trademarks of their respective owners. Features and specifications are subject to change without notice. Product may not be exactly as shown in the diagrams.

STOP!

If you have any problems with this product, please contact our technical support team for assistance.

TECHNICAL SUPPORT

- Customer Service : [888-988-0488](tel:888-988-0488)
- Technical Support : [888-689-4088](tel:888-689-4088)
- Email : service@j5create.com

Service Hours : Mon. – Fri. 10:00 – 18:00 E.S.T

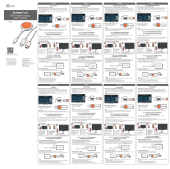
USB-C and USB are trademarks of USB Implementers Forum, Inc., its affiliates or its respective owners, registered or used in many jurisdictions worldwide. HDMI is a trademark of HDMI Licensing Administrator, Inc., its affiliates or its respective owners, registered or used in many jurisdictions worldwide. Windows is a trademark of Microsoft Corp., its affiliates or its respective owners, registered or used in many jurisdictions worldwide. macOS, iPadOS, and Airplay are trademarks of Apple Inc., its affiliates or its respective owners, registered or used in many jurisdictions worldwide. Android is a trademark of Google LLC, its affiliates or its respective owners, registered or used in many jurisdictions worldwide. DP is a trademark of Video Electronics Standards Association, its affiliates or its respective owners, registered or used in many jurisdictions worldwide. WiFi and Miracast are trademarks of Wi-Fi Alliance, its affiliates or its respective owners, registered or used in many jurisdictions worldwide. Other trademarks and trade names may be used in this document to refer to either the entities claiming the marks and/or names or their products and are the property of their respective owners. All company, product and service names used are for identification purposes only. Use of these names, logos, and brands does not imply endorsement. We disclaim any interest in the marks of others.

FAQ:

- **How do I troubleshoot pairing issues?**

If you encounter pairing issues, ensure that the receiver is in pairing mode and that both devices are within range. Additionally, make sure the receiver is updated to the latest version. For further troubleshooting steps, visit <https://j5create.com/screencast/>

Documents / Resources



[j5create ScreenCast JVAW62 USB-C Wireless Display HDMI Extender](#) [pdf] Installation Guide

JVAW62TX, 2AD37JVAW62TX, ScreenCast JVAW62 USB-C Wireless Display HDMI Extender, ScreenCast JVAW62, USB-C Wireless Display HDMI Extender, Wireless Display HDMI Extender, Display HDMI Extender, HDMI Extender, Extender

References

- j5 [j5create International](#)
- j5 [j5create International | ScreenCast](#)
- [User Manual](#)

[Manuals+](#), [Privacy Policy](#)

This website is an independent publication and is neither affiliated with nor endorsed by any of the trademark owners. The "Bluetooth®" word mark and logos are registered trademarks owned by Bluetooth SIG, Inc. The "Wi-Fi®" word mark and logos are registered trademarks owned by the Wi-Fi Alliance. Any use of these marks on this website does not imply any affiliation with or endorsement.