

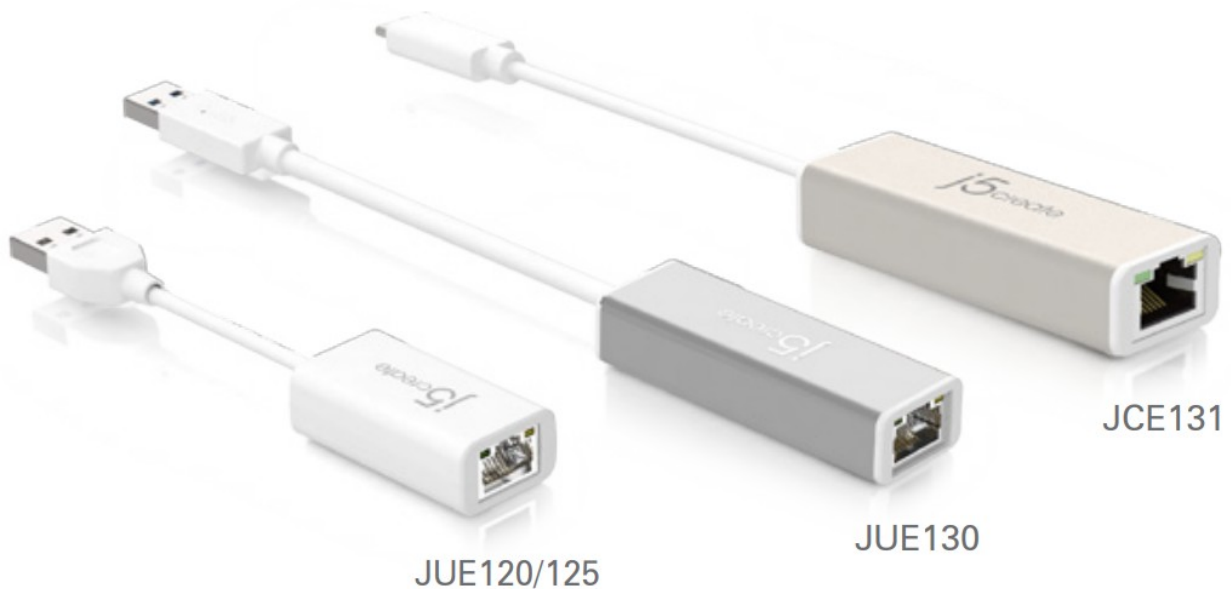


j5create JUE130 USB Ethernet Adapter User Manual

[Home](#) » [j5Create](#) » j5create JUE130 USB Ethernet Adapter User Manual 



Quick Installation Guide



USB 3.0 Gigabit Ethernet Adapter
USB Type-C Gigabit Ethernet Adapter
JUE130/125/120
JCE131

Contents

- 1 JUE130 USB Ethernet Adapter
- 2 Windows – Driver Installation
- 3 Mac – Driver Installation
- 4 System Requirements
- 5 Limited Warranty
- 6 Documents / Resources
- 6.1 References

JUE130 USB Ethernet Adapter



Do NOT plug the j5create USB Ethernet Adapter into the computer until the driver is completely installed.

- Thank you for purchasing the j5create USB Ethernet Adapter! This adapter acts as an external Ethernet card for your MAC or PC. It allows you to add an additional Gigabit Ethernet .

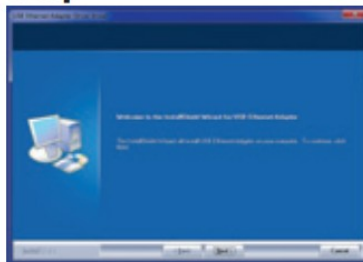
■ Windows – Driver Installation

Driver not required for Windows 10 / 8.1

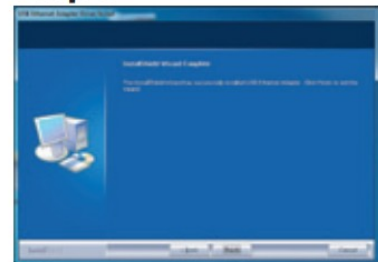
Step 1



Step 2



Step 3



Step 1

If you have internet access the driver will automatically install on Windows 8 / 7 / XP.

It is highly recommended that you download the latest driver from www.j5create.com under Support & Services – scroll down to the product's driver you are installing and download the latest driver for your operating system.

If you do not have internet access insert the Driver CD into your computer's CD-ROM drive. The setup program should launch automatically; if not, go to My Computer and click on your optical drive and manually run the setup CD by double-clicking on Setup.exe (the prompt may take a minute to appear).

Step 2

Follow the prompts to install the driver (You may have to click on My Computer > downloads and choose j5UsbCEthernetAdapter to begin installation). Once the driver has been installed choose Yes and click Finish to restart your computer and complete the driver installation.

Step 3

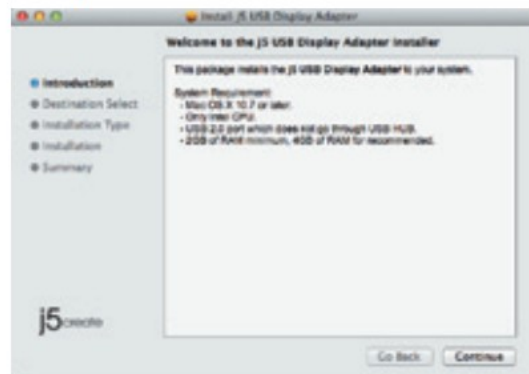
First connect the LAN cable to the RJ-45 connector on the j5create USB Type-C Ethernet Adapter and then to the host computer. Software processing will take a few minutes. After the software processing is complete, you will be ready to use the j5create USB Type-C Ethernet Adapter!

■ Mac – Driver Installation

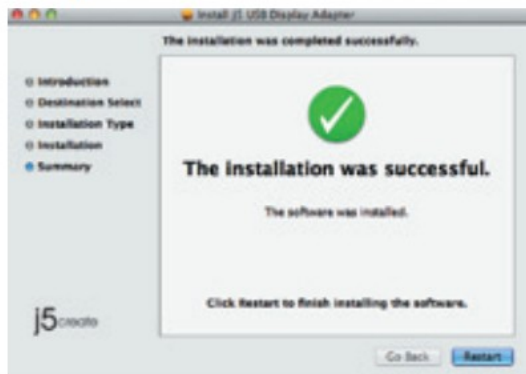
Step 1



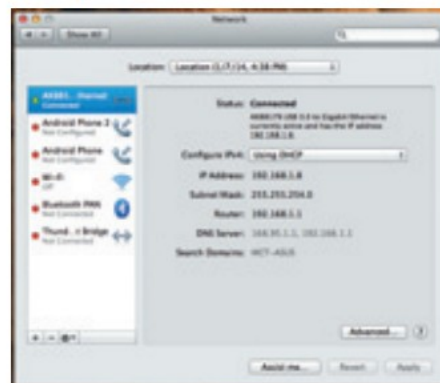
Step 2-1



Step 2-2



Step 3



Step 1


If you have internet access it is highly recommended that you download the latest driver from www.j5create.com under Support & Services –scroll down to the product's driver you are installing and download the latest driver for your operating system (Note: If you have trouble downloading this driver your security settings may need to be adjusted to allow for downloading from anywhere).

If you do not have internet access insert the Driver CD into your computer's CD-ROM drive. Click on Finder under Devices and choose j5create. Choose the mac_install folder and open the dmg file.

Step 2

Choose the correct operating system for your computer and follow the prompts to install the driver (You may have to click on Finder>downloads and choose j5UsbCEthernetAdapter to begin installation). Once initial installation has completed, click Restart to finish installing the software.

Step 3

First connect the LAN cable to the RJ-45 connector on the j5create USB Type-C Ethernet Adapter and then to the host computer. Go to () and then System Preferences and choose the Network tab to adjust. Select "AX88179 USB3.0 to Gigabit Ethernet." Now you are ready to use the j5create USB Type-C Ethernet Adapter!

System Requirements

- Windows 10 / 8.1 / 8 / 7 / Vista / XP
- Mac OS X v10.6-10.11
- Linux kernel 3.x / 2.6.x
- Available USB Type-C port
- Driver not required for Windows 10 / 8.1 / Chrome OS 3.8
- Driver will automatically install on Windows 8 / 7 / XP (Requires Internet access)

Limited Warranty

j5create offers a limited 2-year warranty. User's wear & tear damage is not included.

The user shall call or e-mail j5create's customer service with information regarding the defect(s) of the product and obtain a return authorization number. Users are responsible for one-way return freight cost and we will take care of one-way freight back. In order to obtain a return authorization number, users should have the following information handy when calling or emailing the service team: (i) a copy of the original purchase invoice to verify your warranty

(ii) a product serial number

(iii) a description of the problem

(iv) customer's name, address, and telephone number

j5create does not warrant that the operation of the product will be uninterrupted or error-free. j5create is not responsible for damage arising from failure to follow instructions relating to the product's use. This warranty does not apply to: (a) consumable parts, unless damage has occurred due to a defect in materials or workmanship; (b) cosmetic damage, including but not limited to scratches, dents, and broken plastic on ports; (c) damage caused by use with non-j5create products; (d) damage caused by natural disasters (flood, fire, earthquake, lighting strike, typhoon etc.); (e) damage caused by human misuse (lost, accident, abuse, misuse or other external causes); (f) damage caused by operating the product outside the permitted or intended uses described by j5create; (g) damage caused by service (including upgrades and expansions) performed by anyone who is not a representative of j5create or a j5create Authorized Service Provider; (h) a product or part that has been modified to alter functionality or capability without the written permission of j5create; or (i) if any j5create serial number on the product has been removed or defaced. If such a situation occurs, j5create will calculate the cost of materials and repair for your reference. This warranty is given by j5create in lieu of any other warranties expressed or implied.

Copyright© 2017 j5create. All rights reserved. All trade names are registered trademarks of their respective owners. Features and specifications are subject to change without notice. Product may not be exactly as shown in the diagrams.



Documents / Resources



[j5create UE130 USB Ethernet Adapter](#) [pdf] User Manual

UE130 USB Ethernet Adapter, UE130, USB Ethernet Adapter, Ethernet Adapter, Adapter

References

- j5 [j5create International](#)
- [User Manual](#)

[Manuals+](#), [Privacy Policy](#)

This website is an independent publication and is neither affiliated with nor endorsed by any of the trademark owners. The "Bluetooth®" word mark and logos are registered trademarks owned by Bluetooth SIG, Inc. The "Wi-Fi®" word mark and logos are registered trademarks owned by the Wi-Fi Alliance. Any use of these marks on this website does not imply any affiliation with or endorsement.